

The Anderson County Review



*Probitas, Veritas,
Integritas In Summa*



COPY PRICE - ONE MEASLY U.S. DOLLAR

August 21, 2025

SINCE 1865 160th Year, No. 31

The official newspaper of record for Anderson County, KS, and its communities.

www.garnett-ks.com | (785) 448-3121 | review@garnett-ks.com

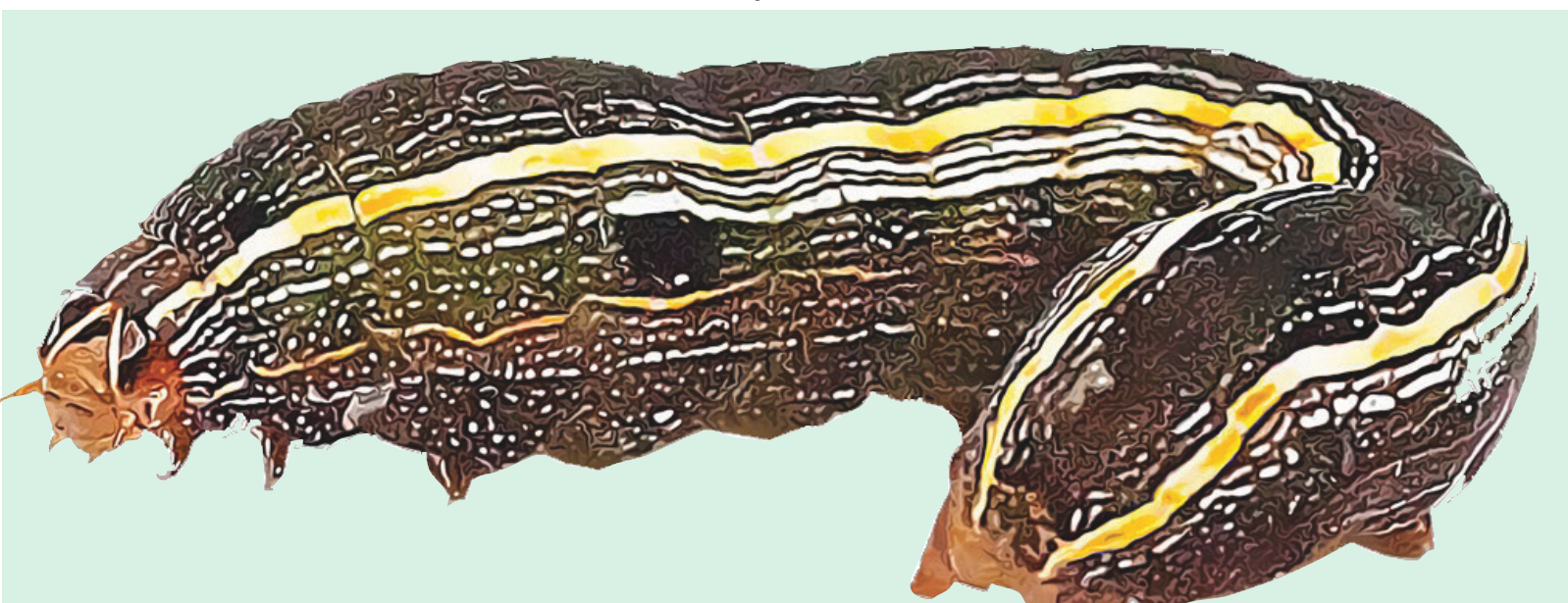
E-statements & Internet Banking



GSSB

Member FDIC Since 1899

(785) 448-3111



INVASION

ARMYWORMS ON THE MARCH IN EASTERN KANSAS

Wet summer built ranks of squirmy pests; best bet before first freeze is spray

BY DANE HICKS THE ANDERSON COUNTY REVIEW

CENTERVILLE - Mary Gilkinson is a soldier in a war she didn't know had started until the opposing army marched over her pasture and her lawn at her home near Centerville, leaving nothing but a big brown patch.

"They really are, they're just like an army," Wilkinson told the Review last week. "They move fast and they just eat about everything," she said.

Armyworms.

The wet summer across Kansas, particularly in the southern and eastern third of the state, built the otherwise nominal fall Armyworm battalions into above-average strength this year, with lots of lush grass and plants to fortify the troops. The

result has been a march from green spot to green spot that's left nothing but brown patches where lawns and some pastures used to be. Thankfully, the attack doesn't seem to be damaging the expected bountiful fall crop of field corn, which is typically too dry and stalky for their pallets.

"What they seem to like best is really good green, tender plants," said Jennifer Brummel of Brummel Farm Service. She said homeowners and farmers in the area had been buying up the recommended chemical treatments to fight the 2025 onslaught, but a lot of the damage has already been done.

The caterpillar-like worms are typically green to dark green in color and have a distinctive inverted "Y" marking across their heads. They turn into moths that lay up to 2,000 eggs each and hatch a new generation every 21 days, which makes a wave like we've seen this moist summer hard to get a handle on.

Ryan Schaub with the Frontier Extension said the pests had overrun farmers and lawn keeper's this year.

"We first got reports of them being around Wichita around June 20th," Schaub said. "But it was around the middle of July before we saw much damage in the Frontier District. They have continued to be a pest since then ravaging milo, alfalfa, brome, teff and crabgrass and even some native grass now."

Schaub said chemical treatments are about the best option until the first frost knocks down the invasion.

"Being a soft bodied insect, they are fairly easy to control with an application, but for best results I would encourage to spray in the morning or evening

as that is when they are the most active." He said frequent monitoring of fields and lawns are

SEE WORM ON PAGE 14



Sedgwick County KSU Extension photo

Experts offer coaching tips for treating for Armyworm pests

Several species of armyworms affect lawns and crops in the United States. In the larval stage, they typically measure 1 1/2 to 2 inches long.

Their heads may vary in color, but they have a distinctive inverted "Y" mark. Armyworm bodies have a series of green, yellow, red or brown stripes down their sides and backs. Adult armyworm moths measure about 1 1/2 inches across. Their front

wings are dark gray with light and dark splotches, but their hind wings are pale gray-white.

Small brown lawn patches are often the first clue of an armyworm problem. The pests may leave grass blades ragged or chew just the green layer, creating a transparent "windowpane" look. Grass may be sheared to the ground, creating bare spots in your lawn. When feeding on corn and other plants with

larger leaves, these pests may leave rows of matching holes.

Armyworms feed around the clock, but their most active times are early morning and late evening. Time your treatment to coincide with activity for maximum results. GardenTech's website offers several highly effective controls to kill armyworms by contact and protect for up to three

SEE PEST ON PAGE 3

Profile of the enemy

- Young caterpillars are light green in color
- Older caterpillars are up to 1.5 inches long, tan to olive-green in color, and have stripes extending the length of both sides of the body.
- A light-colored, inverted Y-shaped marking on the front of the head
- Four black tubercles on the back of each abdominal segment
- To find the caterpillars themselves, check your lawn around dusk or dawn, as caterpillars tend to be most active in the early morning and evening hours and may be easier to spot in your lawn during these times of day. Fall Armyworm will likely be harder to find moving around during the heat of the day.

Nope

Kobach: Kelly has no authority to join Dems in lawsuit against Trump

BY PATRICK RICHARDSON THE SENTINEL

WASHINGTON, D.C. - Kansas Attorney General Kris Kobach has moved to block Kansas Governor Laura Kelly from joining a lawsuit against the Trump administration.

According to a release from Kelly's office, "Kansas joined a coalition of 23 attorneys general

and governors for the commonwealths of Pennsylvania and Kentucky in suing the Trump Administration over its unprecedented and unlawful attempts to invoke a single provision buried in the federal regulations to strip away billions of dollars in critical federal funding for states and other grantees.

The lawsuit seeks to limit the Trump Administration's use of this regulation to indiscriminately and illegally terminate critical funding for combating violent crime, educating our students, protecting clean drinking water, conducting lifesaving medical and scientific research, safeguarding public health, addressing food insecurity, and much more."

However, according to Kobach, she lacked the authority to do so.

The Sunflower State Journal reports that Kobach filed an "amicus" or "friend-of-the-court" brief in federal court in Massachusetts, arguing that Kelly does not have the authority to bring the lawsuit on behalf of Kansas, along with a coalition of attorneys general from Democratic-led states.

Kobach is asking the court to remove Kansas from the case because Kelly does not have the authority under state law to join the case.

According to the Sunflower State Journal, Kobach said only the AG can represent the state in any federal or appeals

SEE KOBACH ON PAGE 14

Local lakes blue-green algae free; warnings for others in Kansas

TOPEKA - So far lakes in Anderson County and the surrounding area are checking out clean of the typical late summer dose of blue-green algae, but those traveling to other areas of the state in coming weeks should take note of problems at other Kansas lakes.

The Kansas Department of Health and Environment (KDHE) and the Kansas Department of Wildlife and Parks (KDWP) have issued a public health advisory due to blue-green algae.

The water recreation season in Kansas officially

SEE ALGAE ON PAGE 6

Deadlines looming for Sept. 27 Cornstock concert event

BY DANE HICKS THE ANDERSON COUNTY REVIEW

GARNETT - With the 20th anniversary of the Cornstock Concert On The Hill coming next month, the Anderson County Corn Festival is reminding everyone of upcoming deadlines regarding ticket prices, vendor participation and camping.

Committee member Susan Wettstein said the most important deadline is to buy tickets before the August 31 price increase. The individual ticket price of \$55 goes to \$65 as of midnight on August 31 and will remain \$65 through September 27th.

"Right now through August 31 there is a "Four

Pack" 4-ticket bundle that is currently online and available at the Goppert State Service Bank and Patriots Bank for the low, special price of \$180 (\$45 x 4 tickets)," Wettstein said.

The vendor deadline for the event is also coming up. Wettstein said food vendor spaces are sold-out, but business, craft and informational vendor spaces are available in the Cornstock Outdoor Fun Mall. The "Mall" is strategically located where the highest traffic flows into the concert venue. Vendor spots are \$185 (\$110 fee plus \$75 refundable deposit) per 12x12 space through August 31. Space includes

1 ticket to the concert and 1 vendor parking pass. As of September 1, booth space increases to \$195.

Deadline to reserve camping spots is September 21. Reservations have been made easier this year, thanks to the City of Garnett's sign up with [campspot.com](https://www.campspot.com). Wettstein said two nights of camping under the stars, lakeside on Friday and Saturday, September 26-27, is available at the very low total price of just \$51. Campsites

are available at Lake Garnett (self-sustained), Veterans Memorial Park (Crystal Lake w/ electric),

and Cedar Valley Reservoir (electric and self-contained)

SEE DEADLINES ON PAGE 7



THE ANDERSON COUNTY REVIEW 8-21-2025 / Band social media Local Band Trevor Hollman and the Haymakers include Jerry Ramsey, Neil Kelly, Trevor Hollman, Greg Branson and Garrett Branson.

NEWS IN BRIEF

POLITICAL FORUM

Anderson County Farm Bureau and Garnett Business and Professional Women (BPW) are hosting a Political Forum for the upcoming election for Garnett City Commission, School Board and the Sales Tax proposal. The forum is on Sept. 11th at 7 p.m. at Town Hall Center. Please take time to learn the views of the candidates and the sale tax proposal for the betterment of our community. Any questions please feel free to contact Helen Norman at 785-448-8745.

CHAMBER MONTHLY MIXER SET SEPT. 11

The Garnett Area Chamber of Commerce will sponsor its September Monthly Mixer at the chamber office from 5:30 p.m.-7 p.m. Monday, Sept. 15. Come check out the new Chamber Office, meet our new director, and learn about upcoming events and future plans. This is a great opportunity to connect with fellow community members and share your ideas.

AMERICAN LEGION BINGO ON TUESDAYS

Bingo at American Legion Post 48 Garnett will be held every Tuesday, starting time at 6:30 p.m.

CITY WIDE GARAGE SALE

Garnett's city wide garage sale is set for Saturday, September 13. To be a map sponsor contact the Anderson County Review office at 785-448-3121 or send an email to review@garnett-ks.com. To place your ad for the city wide sale call or email us today!

CORNSTOCK TICKETS

Cornstock ticket outlets in Anderson County are now selling early bird tickets. See Chris Janson, The Kentucky Headhunters, Kelsey Hart and Trevor Holman & the Haymakers 9/27 in Garnett.

VFW SETS CORNHOLE TOURNEYS THURSDAYS

Every Thursday their will be a cornhole tournament at the Garnett VFW, 1507 S. Elm St. It is a family friendly event open to everyone. Registration begins at 6 p.m., tournament begins at 6:30 p.m. Entry fee is \$15.

UNPLANNED PREGNANCY

Advice & Aid Pregnancy Center in Overland Park helps women and their families make an educated decision about an unplanned pregnancy by providing evidence-based, medical information about parenting, adoption and abortion. Call (913) 962-0200 for information or visit www.advicedandaid.com.

ANDERSON COUNTY COMMISSION AUGUST 11, 2025

Chairman Leslie McGhee called the meeting of the Anderson County Commission to order at 9:00 AM on August 11, 2025 at the Anderson County Commission Room. Attendance: Leslie McGhee, Absent: Michael Blaufuss, Present: Anthony Mersman, Present. The Pledge of Allegiance was recited. Minutes from the previous meeting were approved as amended.

Executive Session

Commissioner Blaufuss moved and Commissioner Mersman seconded to enter into executive session for 15 minutes for non-elected personnel. All voted yes. Commissioners, Ethan Lickteig, Julie Wettstein were present. Commissioner Blaufuss moved and Commissioner Mersman seconded to re-enter open meeting. All voted yes. No action taken.

Road & Bridge

Ethan Lickteig, Road & Bridge Supervisor, met with the commission. He stated the motor grader in the Greeley district is in need of a new transmission and is unusable. He will get a bid for the transmission and move forward with the repair. An older truck with high mileage on the fleet will need to be replaced soon. Discussion was held on county roads, ditches, and chip and seal.

General Transportation

Julie Wettstein, County Clerk, met with the commission. The council on aging that oversees the general transportation services is to appoint board members every three years. The board has not been appointed for some time. Due to the transfer of operations, the County Commissioners should be appointed to the board per County Counselor James Campbell. Commissioner Mersman moved and Commissioner Blaufuss moved to appoint Leslie McGhee, Michael Blaufuss, and Anthony Mersman as the council on aging board for a term of 3 years. All voted yes.

Adjourn

Meeting adjourned at 12:00 PM due to no further business.

ANDERSON COUNTY LAND TRANSFERS

Scott W Cooper and Terri B Cooper to Scott W Cooper and Terri B Cooper: Lots 9, 10 & 13 Country Club Addition to City of Garnett; & north 6.00 feet lot 11 Country Club Addition to City of Garnett.

Robert Joe Adams, Robert J Adams A/K/A and Timothy J Finnerty to Bobby Lee: S2 se4 22-20-20.

Kalana Jewett to Eric Glaze and Luana Glaze: Lot 7 blk 6 Parkland Addition (1970 revised) to City of Garnett.

Stephen R Lickteig and Mariann Lickteig to Samantha J Hicks: Lots 1 & 2 blk 43 City of Garnett.

Deane A Ramsey and Patricia J Ramsey to Dustin R Ramsey Co-Trustee, Donald D Ramsey Co-Trustee and Deane A & Patricia J Ramsey Irrevocable Trust Dated 6-24-25: Beg at secor sw4 19-22-20 thence north 366.5', thence west 730', thence south 360.5', thence east 724' to pob; & se4 19-22-20 & sw4 sw4 22-22-20 swfr4 19-22-20 except west 30 acres thereof; & also excepting a tract of 5 acres, more or less in se4 swfr4 said section 19, heretofore conveyed under contract to second parties, described as: beg at secor sw4 19-22-20, thence north 366.5', thence west 730', thence south 366.5', thence east 724' to pob; & n2 nw4 30-22-20 & west 30 acres of swfr4 19-22-20 & e2 ne4 & nw4 ne4 30-22-20 & ne4 ne4 26-22-19, & se4 ne4 & ne4 se4 26-22-19 & north 24' lots 1 & 2 blk 47 city of garnett, together with all party wall rights and easements, including an easement to extend roof 1 foot over lot 3 blk 47 and to drain water onto said lot 3; & w2 nw4 & n2 sw4 25-22-19 less the following: a trct in n2 sw4 25-22-19 described as follows: com at nwcor sw4 said section 25; thence along west line of said sw4 south 01°34'21" east 30.18 feet to pob; thence north 88°33'14" east 840.00 feet; thence south 01°34'21" east 600.00 feet; thence south 88°33'14" west 840.00 feet to pt on west line of sw4 said section 25, thence along said west line, north 01°34'21" west 600.00 feet to pob; containing 11.57 acres, more or less, except that part in road.

Stephanie A Katzer to Aidan W Hamilton: Lot 13 & e2 lot 14 blk 62 City of Greeley.

Daniel W Vredenburg, Jr and Shauna King-Coffman to Daniel W Vredenburg, Jr: Lots 1 & 2 in block 9 in Pinegar's Second Addition to the City of Colony.

Dennis E Benjamin, Dennis Benjamin A/K/A, Gaye Ann Benjamin, Judith A Farley, Judy Fraley A/K/A, Judith A Fraley A/K/A and David William Fraley to Riley Lane Young: Sw4 14-21-19 less railroad r/w & less a tract of land within said 14-21-19 described as follows: all that part of sw4 14-21-19 as lies south and east of what was formerly AT&SF Railroad r/w, more particularly described as follows: beg at secor said sw4, thence north along quarter section line to pt said quarter section line intersects former at&sf railroad r/w; thence south-westerly along said railroad r/w boundary to pt of intersection with south line of said section 14, thence east on said section line to pob; & less a tract of land with said 14-21-19 described as follows: a 13.0921 acre parcel in sw4 14-21-19, thence east along south line of said section, on an assumed bearing of south 90° east a distance of 1121.83 feet to true pob; thence north 2°43'27" east a distance of 230.26 feet; thence north 81°47'46" east a distance of 229.53 feet; thence north 64°59'27" east a distance of 253.07 feet; thence north 12°54'31" east a distance of 196.35 feet; thence south 90° east parallel to south line of said section, a distance of 841.29 feet, more or less, to pt on west line of former AT&SF Railroad r/w, now known as prairie spirit trail, thence south 18°15'42" west along said west line, a distance of 590.89 feet, more or less, to pt on south line a distance of 1167.45 feet, to pob.

Sydney Amaya to Connor Reid Barnett and Alexandra M Melendez: Lots 12 and 13 in block 7 in Parkview Addition to the City of Garnett.

Jason Read to Connor Reid Barnett and Alexandra Marie Melendez: Lots 12 and 13 in block 7 in Parkview Addition to the City of Garnett.

Jason Read to Connor Reid Barnett and Alexandra Marie Melendez: Lots 12 and 13 in block 7 in Parkview Addition to the City of Garnett.

Jason Read to Connor Reid Barnett and Alexandra Marie Melendez: Lots 12 and 13 in block 7 in Parkview Addition to the City of Garnett.

Jason Read to Connor Reid Barnett and Alexandra Marie Melendez: Lots 12 and 13 in block 7 in Parkview Addition to the City of Garnett.

Jason Read to Connor Reid Barnett and Alexandra Marie Melendez: Lots 12 and 13 in block 7 in Parkview Addition to the City of Garnett.

Jason Read to Connor Reid Barnett and Alexandra Marie Melendez: Lots 12 and 13 in block 7 in Parkview Addition to the City of Garnett.

Jason Read to Connor Reid Barnett and Alexandra Marie Melendez: Lots 12 and 13 in block 7 in Parkview Addition to the City of Garnett.

Jason Read to Connor Reid Barnett and Alexandra Marie Melendez: Lots 12 and 13 in block 7 in Parkview Addition to the City of Garnett.

Jason Read to Connor Reid Barnett and Alexandra Marie Melendez: Lots 12 and 13 in block 7 in Parkview Addition to the City of Garnett.

Jason Read to Connor Reid Barnett and Alexandra Marie Melendez: Lots 12 and 13 in block 7 in Parkview Addition to the City of Garnett.

Jason Read to Connor Reid Barnett and Alexandra Marie Melendez: Lots 12 and 13 in block 7 in Parkview Addition to the City of Garnett.

Jason Read to Connor Reid Barnett and Alexandra Marie Melendez: Lots 12 and 13 in block 7 in Parkview Addition to the City of Garnett.

seatbelt (18+ yoa).

Joseph Sheldon Blake, Jr has been charged with failure to wear seatbelt (18+ yoa).

Kristen Aleece Mattox-Graham has been charged with speeding 75 mph in a 65 mph zone.

Patrik Michael Toal has been charged with improper passing on right.

Marvin Len Slyter has been charged with failure to wear seatbelt (18+ yoa).

Alanna Nicole Krvavel has been charged with speeding 81 mph in a 65 mph zone.

Douglas Dean Adams has been charged with failure to wear seatbelt (18+ yoa).

Phillip James Dyche has been charged with vehicle liability insurance required.

Sarah Rose Renner has been charged with speeding 75 mph in a 65 mph zone.

Kimberly Ann Soap has been charged with operating a vehicle without registration or w/expired tag.

Andre Eugene Sidney has been charged with speeding 75 mph in a 65 mph zone.

Prati K Kumar B Patel has been charged with speeding 80 mph in a 65 mph zone.

Jillianne Paige Gaines has been charged with speeding 66 mph in a 55 mph zone, driving while cancelled/suspended/revoked and for no vehicle registration.

Joshua Michael Osborn has been charged with speeding 84 mph in a 65 mph zone and for no vehicle registration.

Chandrasekhar Venkataratnam Kuntamakalah has been charged with speeding 80 mph in a 65 mph zone.

Jorge Alberto Garcia-Lopez has been charged for operating a motor vehicle without a valid license.

Davis Brenden Kevin Ray has been charged with vehicle liability insurance required.

Justin Paul Grabowski has been charged with speeding 45 mph in a 35 mph zone.

Erin Elizabeth Stevenson has been charged with vehicle liability insurance required.

Gary Richard Miller has been charged with vehicle liability insurance required.

ANDERSON COUNTY ACCIDENT REPORTS FILED

On July 8, a vehicle driven by Millard Marion Talley, Burlington, Iowa, was eastbound on 1600 Road when the vehicle exited the roadway and went into the ditch.

On July 10, a vehicle driven by Joe Wyane Borntrager, Garnett, was traveling westbound on 2000th Rd when the vehicle struck a deer.

On July 12, a vehicle driven by Meghan Michelle Gabel, Kansas City, struck a deer as it ran across 169 Hwy.

On July 15, a semi driven by Shannon Huber High, Bloomfield, Iowa, was hauling 94 foot trusses and as he attempted to navigate the roundabout south of Garnett he took out a light pole. The truck belonged to Midwest Truss out of Bloomfield, Iowa.

On July 17, a vehicle driven by Bruce E Wood, Humboldt, attempted to pass a vehicle driven by Jerry Lee Dodson, Chanute, when the vehicle hydroplaned into the front driver side of the vehicle being passed.

On July 22, a vehicle driven by Garrett Erwin Tucker, Colony, attempted to cross Highway 169 and struck a vehicle driven by Douglas Allan Fink, Humboldt.

On July 29, a vehicle driven by Taryn Rae Compton, Princeton, was southbound on Neosho Road when the driver hit a pot-hole and lost control causing the vehicle to veer off the road and rolled 1.25 times before coming to a rest on the driver's side. The driver was wearing her seatbelt and was uninjured.

On August 3, a vehicle driven by Henry J Roeckers, Garnett, was westbound on 1600 Road when the vehicle struck a deer.

K-State expert says flooding brings risk and reward

By Pat Melgares, K-State Extension news service MANHATTAN, Kan. — Flooding across parts of the United States has made headlines in recent months, causing widespread damage to homes, infrastructure and natural resources. But while floods often leave behind costly destruction, a Kansas State University expert says these high-water events also play a valuable role in nature's cycle.

On a recent episode of the K-State podcast, Fins, Fur and Feathers, K-State aquatics specialist Joe Gerken joined co-host Drew Ricketts to explore the causes and consequences of flooding.

"Flooding is simply when there's too much water in places we don't want it," Gerken said. "But not all floods are created equal."

According to Gerken, four key factors influence flooding: timing, duration, magnitude and intensity.

Spring floods might stem from snowmelt, while summer floods are often tied to heavy rainfall. Some floods rise quickly and disappear just as fast — known as flash floods — while others build over time as rivers exceed their banks.

Flash floods, Gerken noted, have been especially destructive this year.

"They're driven mostly by rainfall, and recent warming in ocean waters — especially in the Gulf — has loaded the atmosphere with more water that is colliding with cooler air and dumping large amounts of rain," he said.

Levees, dams, storm sewers and other human-built infrastructure aim to contain rivers, but urban development has created impervious surfaces like roads and parking lots that prevent water from soaking into the ground. That water moves quickly into storm drains and rivers, often worsening flood conditions.

Vegetation also plays a vital role.

"The plants that we have near a river can be really important," Gerken said. "But when we remove that vegetation, especially near rivers, sediment washes away more easily and contributes to flooding."

Still, floods aren't always bad.

"Floods are a form of ecological disturbance," Gerken explained. "If we take out some of the negative side effects to humans and property...flooding can serve the same role as prescribed fire and snow and ice. Over time, Mother Nature might reclaim some of those areas to regrow new trees. And that process is important, too."

Also, floodwaters can carry nutrients into surrounding flood plains, replenishing some of the world's most fertile farmland. The process, called lateral connectivity, helps rivers connect with adjacent wetlands and forests, enriching soil and encouraging biodiversity.

Gerken said flooding can also benefit aquatic life. "Some fish, like alligator gar and freshwater drum, take advantage of these shallow, flooded areas to spawn," he said. "They lay eggs on vegetation in temporarily submerged fields. It's an incredible process."

Even so, Gerken urges landowners to stay alert after flood events.

"Monitor your pond for unwanted debris or invasive fish species," he said. "If there's any damage to your dam or embankments, act quickly. Fixing a small problem right away is much easier than addressing a major failure later."

He adds: "There's always going to be a balance (between the negative and positive forces of a flood). Floods challenge us, but they also shape the world we live in, for better and worse."

Ben Yoder, Your Kansas Realtor/Auctioneer
The Kansas Property Place, LLC
 Cell/Text (785) 448-4419
 Office (785) 448-3999
 www.KsPropertyPlace.com
 Ben@KsPropertyPlace.com
 501 E. 4th Ave., Garnett, KS

Specializing in Real Estate and Farm Auctions

KAA AUCTIONEER

FedEx

The most reliable overnight shipping service, available 24-hours-a-day!

Saturday delivery available too!

Federal Express — Overnight Delivery
 The World On Time®

Located at
Garnett Publishing, Inc.
 112 W. Sixth Street, Garnett, Kansas

D'ja get married yet?

Tell us about it.

Wedding/engagement notices are free
 review@garnett-ks.com

good shepherd HOSPICE

YOUR HOMETOWN HOSPICE PROVIDER

(785) 448-6590 427 S. Oak, Garnett, KS 66032

WE'RE READY TO SERVE YOU IN

Ottawa, Kansas

The Anderson County **Review**

ANDERSON COUNTY'S ONLY LOCALLY-OWNED NEWSPAPERS

785-448-3121 / FAX 785-448-6253
 email: review@garnett-ks.com

CARSTAR, Ottawa
 Auto Body Repair Experts

402 N. Main • 785-242-8916

Jeff & Lou Baker - Owners
 1-800-CARSTAR - 24/7 Accident Assistance.
 Relax, we'll take it from here.™

Sutton's Jewelry
 MEMBER AMERICAN GEM SOCIETY

East side of historic downtown OTTAWA

785-242-3723

PAINTS PAINT • WALLPAPER
 CUSTOM WINDOW BLINDS
 CUSTOM FRAMING & SUPPLIES

OTTAWA PAINT FRAMES & DECOR

Contact Heidi at 785-242-5007 109 S. Main Ottawa, KS

OTTAWA COOP

PO Box 680 Ottawa, KS 66067
 (888) 242-5170
 www.ottawacoop.com

Fine Senior Living.

701 S. Poplar Ottawa
785-242-6655

SUNFLOWER PLAZA TOWER
 Property managed by Kay Management Company.

Cornerstone Bookstore

Gifts, Books, Bibles, Cards, Special Orders, and More

202 S. Main, Ottawa • 785-242-2112
 Bruce & Joyce Beatty • cornerstonebook@sbcglobal.net

NEOSHO COUNTY COMMUNITY COLLEGE

Day, Night, Weekend, Online
 Visit www.neosho.edu

KOFO 1220AM

Listen to Anderson County Today!
 Mon-Fri: 8:00am
Country Favorites

SPENCER

MAY 2, 1935 — AUGUST 17, 2025

Jimmie Leroy Spencer, age 90, of Garnett, Kansas, passed away on Sunday, August 17, 2025, at his home. Funeral services will

be held at 10:00 a.m. on Thursday, August 21, 2025, at Feuerborn Family Funeral Service in Garnett. Burial will follow at Welda Cemetery, Welda, Kansas.

Colony Christian Church told the story of Maximilian Kolbe

Brinley McGhee led worship singing "Run to the Father," "How Deep the Father's Love For Us" and "Waymaker."

Larry Wittmer told the story of Maximilian Kolbe during the communion meditation. Kolbe was a polish priest who starved to death in the place of another man in the death camp Auschwitz. Ten men had been chosen to starve because a prisoner had escaped and they were being punished to deter further escape attempts.

Kolbe volunteered to take the place of a man who had a wife and two children. Christ also chose to die for us and sacrificed Himself to pay the debt for our sins.

Pastor Chase Riebel's sermon was from Ephesians 6:10-24. Paul's final word to the Ephesians was to put on the armor of God and fight their battles with His strength and not their own. God's armor - truth, righteousness, peace, faith, salvation and the word of God is meant to be taken with us at all times everyday.

PSRT will decorate depot after 9/10 meeting

Prairie Spirit Rail Trail members met at the Santa Fe Depot August 13, 2025 at 7:00 pm.

President Ruth Theis thanked those that had helped with taking care of the flowers at the depot this summer. Susan Wettstein was complimented for being the chairman for the Walking Club this year.

John Malone updated the members on the progress of getting the security system at the depot.

The next meeting will be September 10th. The meeting will start at 6:00 p.m. and be at the depot. After the meeting members will decorate at the depot and place scarecrows along the trail.

Senior Center pitch results for 7/31 & 8/14

On July 31st sixteen crazy card players met to play 10 games of 13-point pitch. The results of that evening are as follows: Don Smith took top honor winning seven of 10 games; Carla Ewert won the least number of games; Jessie Duncan had the most perfect hands of 13 with four and Karen Register won the 50/50.

On August 14th we had sixteen players for Thursday Night Pitch. It was a fun night with a lot of laughter and card playing.

We were happy to have Don Smith's daughter, Nancy, join us for the evening. The results for the evening are as follows: Jackie Waddle took top prize by winning 8 of 10 games; Dorothy Spencer won the 50/50 and also had the most perfect hands of 13 with 3 and Mike Kilet won the least number of games.

Join us on Thursday evenings promptly at 6 o'clock at the Senior Center for 10 games of 13-point pitch. Always room for one more.

Jan Wards reporting

PEST...

FROM PAGE 1

months:

•Sevin® Insect Killer Granules treat your entire lawn to reach armyworm stages above and below ground. Use a regular lawn spreader for uniform coverage. Then, water the granules immediately to release active ingredients into the soil.

•Sevin® Insect Killer Ready to Spray attaches to a regular garden hose. Spray lawn and garden areas thoroughly, includ-

ing all surfaces of affected garden plants.

•Sevin® Insect Killer Ready to Use simplifies target spot treatments. Just adjust the spray nozzle and it's ready to kill existing armyworms and protect against future invasions.

Armyworms often attract starlings, skunks and rodents that feed on larvae hidden in your turf. Large numbers of probing birds or areas of scratched, disturbed lawn may indicate plentiful armyworms.

Obituary Charges/Policy

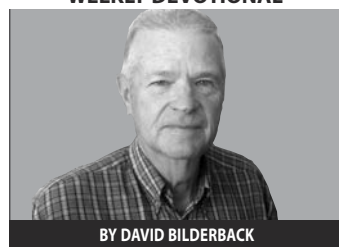
Full obituaries are published as Submitted in the Review at the rate of 20¢ per word and include a photo at no charge. Death notices are published free and include name, date of birth and death and service information. A photo may be added to a death notice for a \$10 fee. Obituaries, jpeg photos and death notices may be emailed to review@garnett-ks.com with a phone number for confirmation. Payment may be arranged through your funeral home or directly with The Review. We accept all major credit cards. Questions? Call The Review at (785) 448-3121.

Maybe we should take God more seriously

Many people are put off by Christianity because it offers only one way to achieve salvation. The world offers up multiple choices on everything we desire. So based on that we believe we need to be able to choose a form of salvation that fits us. If we correctly understand salvation it becomes apparent this is incompatible. Our salvation is secured by: Grace alone, thru Faith alone, in Christ alone. Grace has been defined as God's unmerited favor. Some theologians have defined GRACE as God's riches at Christ's expense. If we dig deeper grace is God's favor or kindness shown without regard to the worth or merit of the one who receives it and in spite of what that person deserves. Grace is to be humbly taught through the prayer of faith.

Faith is a belief in or confident attitude toward God, involving commitment to his will for one's life. Genuine saving faith is a personal attachment to Christ, best thought of as a combination of two ideas, reliance on Christ and commitment to him. In 2 Timothy 1:12 Paul says, "I know in whom I have believed and am persuaded that he is able to keep what I have committed to him until that Day."

WEEKLY DEVOTIONAL

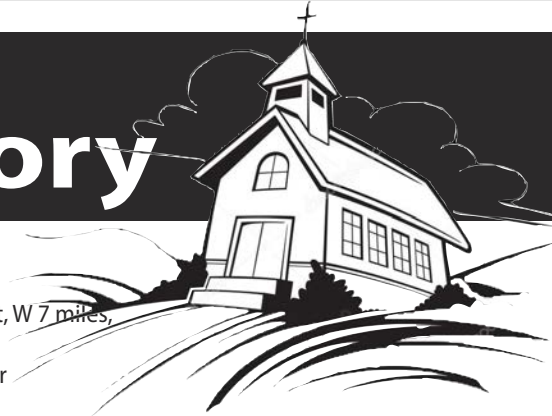


BY DAVID BILDERBACK

Christ alone is the God-man, taking on himself a human nature as well as his divine nature. When Jesus took our sins on himself on the cross and in the hour of his death Christ offered his life to God on behalf of mankind. The perfect life which he offered was acceptable to God. The salvation secured through the giving up of that life is God's free gift to mankind. Through Christ's death we are justified before God of all past, present and future sins. Jesus told his disciples, "No one comes to the Father except through me." The world has numbed our knowledge of God. Yes the way of salvation is narrow but there is a way. Because it is so narrow maybe we should take it more seriously. How seriously do you take it?

Ministry on the Holiness of God. Author of the book, "On the Other Side of the Door" Like David Bilderback

Anderson County Area Religious Services Directory



DODD'S REEBLE MEMORIALS MONUMENTS
OTTAWA - IOLA EMPORIA - HOME
785-242-3350
FIND US IN NAMES & NUMBERS

Benjamin Realty
Sherry Benjamin, Broker
Land • Homes • Commercial
201 N. Maple Garnett, Ks 66032
Office: (785) 448-2550
Home: (785) 241-0532
Cell: (785) 304-2029
benjaminrealty@earthlink.net

The Anderson County Review
GARNETT PUBLISHING, INC
112 W. SIXTH AVE., GARNETT
(785) 448-3121

Advertise here.
Call (785) 448-3121

Advertise here.
Call (785) 448-3121

KOFO Anderson County News
103.7 FM • 1220 AM
(785) 242- 1220
Mon - Fri 8:00am
Country Favorites

Patriots Bank
Your only locally-owned bank.
131 E. 4th Ave • PO Box 327 • Garnett, KS
(785) 448-3191

GRACE & TRUTH BAPTIST CHURCH
Sunday Service 10:00 am
Wednesday 7pm
East 6th & Hwy 169, Garnett, KS
Pastor - Joshua Ford (785) 448-3908

CHURCH OF THE NAZARENE
Sunday Connect Groups 9 am
Sunday Worship Service 10:00am
Bible Studies Sunday 5:30pm
258 W. Park Road, Garnett, Ks.
(785) 448-3208
Lead Pastor - Scott King
Childrens' Pastor -Sarah Pridey
Teen Pastor -

DUNKARD BRETHERN CHURCH
Sunday School 10am
Sunday Worship 11am
Hwy 31 & Grant, Garnett, KS

KINCAID SELMA COMMUNITY CHURCH
Worship 9am
Sunday School 10:15 a.m.
709 E. 5th St., Kincaid, KS
Church Office (620) 439-5773

ST. THERESE CATHOLIC CHURCH
Worship Service Saturday 5pm
Richmond, KS
Fr. Gerald Williams
(785) 835-6273

NORTHCOTT CHURCH
Sunday Morning Bible Study 9am
Sunday Worship 10am
12425 SW Barton Rd., Colony, KS
66015
(620) 228-9324

BEACON HOUSE OF WORSHIP
Sunday Worship Service 10:00 am
23031 1750 RD • Garnett, Ks
(785) 229-5172

ST. JOHNS CATHOLIC CHURCH
Mass Sunday 8am
Greeley, KS
(785) 448-3846
Pastor Fr. Thomas Maddock

COLONY CHRISTIAN CHURCH
Cross Training 9:45am
Sunday Worship 10:45am
211 Catalpa Ave., Colony
(620) 852-3200
Pastor - Chase Riebel

FIRST CHRISTIAN CHURCH
www.fccgarnett.org
Early Worship 8am
Sunday School (All Ages) 9:15am
Second Worship Service 10:30am
Children's Church 11am
Nursery Provided
Second & Walnut, Garnett, KS
(785) 448-3452
Chris Goetz, Pastor
Brianna Wilson, Youth Minister
brianna@fccgarnett.org

COLONY COMMUNITY CHURCH
Sunday Worship 9:30am
Sunday School 10:30am
Risen & Rockin' Sunday School
Service 10:35am
(620) 852-3237
Colony, KS 66015
Pastor - Steve Bubna

FIRST BAPTIST CHURCH KINCAID
Sunday School 9:30am
Church 10:45am, Eve Worship 7pm
Wednesday Bible Study 7pm
3rd & Osage, Kincaid, KS
(620) 439-5311

UNITED METHODIST CHURCH
Sunday School 9:15 a.m.
Sunday Worship 10:30am
Bible Study Wed. 10am
Chancel Choir Sun 9am
(785) 448-6833
2nd & Oak, Garnett, KS

UNITED METHODIST CHURCH
Sunday School (All Ages) 10:00 am
Sunday Morning Worship 11:00am
116 N. Kallock, Richmond, KS
(785) 835-6235

WELDA UNITED METHODIST CHURCH
Sunday Church School 9:45am
Church Services & Children's
Church 11am
Nursery Available
(785) 448-2358
Welda, KS
Pastor - Bill Nelson

MONT IDA CHURCH
Sunday School 9:30am
Church 10:40am
(785) 448-8042
1300 & Broomall Rd, Welda, KS

66091
From Garnett - 7th St, W 7 miles,
S 3 miles
Pastor - Vernon Yoder

KINGDOM HALL OF JEHOVAH'S WITNESSES
Sunday Public Meeting 10am
Sunday Watchtower Study 10:50am
Tuesday Ministry School 7:30pm
Tuesday Service Meeting 8:20pm
Thursday Congregation Book Study 8pm
704 Westgate - Garnett, KS
(785) 448-6755

HOLY ANGELS CATHOLIC CHURCH
Mass: Saturday 5:30pm, Sunday 10am
(785) 448-3846
514 E. 4th, Garnett, KS
Pastor Fr. Thomas Maddock

ST. BONIFACE CATHOLIC CHURCH
Sunday Worship 9am
(785) 835-6273
Scipio, KS
Fr. Gerald Williams

ST. TERESA CATHOLIC CHURCH
Westphalia, KS
Mass: Sunday 10 a.m.
Fr. Colin Haganey
(620) 364-5671

NEW LIFE BAPTIST CHURCH
Sunday School 10am
Sunday Worship 11 am, 1:30pm
705 S. Westgate (end of 7th St.)
Garnett, KS
(785) 204-1769
Pastor - Chadd Lemaster

ST. PATRICK'S CATHOLIC CHURCH
Emerald (Hwy 31 West of Harris, KS)
Mass: Saturday 4:00 pm
Fr. Colin Haganey
(620) 364-5671

COLONY UNITED METHODIST CHURCH
Church Services 9:30am
Colony, KS
Parsonage (620) 852-3103
Church Office (620) 852-3106
Pastor - Dorothy Welch

LIVING WATERS BIBLE TEMPLE
Sunday School 10am
Sunday Service 11am
305 E. 2nd
Garnett, KS
(785) 521-1594
Pastor - Michael Lobdell

Strong churches make strong communities. Join a church family in the local area today!

Advertise here.
Call (785) 448-3121

SONIC Coca-Cola
Hwy 59 in Garnett, KS
(785) 448-6393 or (785) 448-6494
Call-ins Welcome!

Serving The Area Since 1899
GSSB FDIC
GOPPERT STATE SERVICE BANK
Garnett • Colony • Hepler • Ottawa • Pomona • St. Paul • Walnut

Kelly channels Biden in SNAP denial

When someone in America asks the government for information and they're told instead to go pound sand, the logical question is "why?"

That's why something doesn't smell right in Governor Laura Kelly's refusal to provide data on Kansas' federally-paid food welfare program to the USDA officials who are supposed to be keeping track of it.

At worst, Kelly's refusal to provide program data on the state's Supplemental Nutrition Assistance Program gives the appearance that something nefarious is going on inside the Kansas program - benefits purposefully being paid to ineligible recipients or illegal aliens, funds siphoned off for inappropriate purposes, etc. At best, it smacks of yet another Democrat governor tantrum, purposefully holding up the Trump agenda to "DOGE" the books on a wide range of federal spending in order to deny the administration any more feathers in its cap for accountability and competence headed into future elections.

Politics, in other words.

Either way, Kelly's refusal to provide USDA the Kansas data saying it contains "personal information" is suspicious and inappropriate - the equivalent of saying a driver isn't obligated to hand over his operator's license, insurance and vehicle registration to a cop on a traffic stop because it includes "personal information."

This excuse, coming from Kelly through Department for Children and Families head Laura Howard, is simple hogwash. It's part of a tragic sense of entitlement that has swept the country in Democrat quarters - this idea that once government provides something (paid for by us taxpayers who bankroll "the government") that the gift is sovereign and never ending; that it can't be touched or questioned even by the authorities who granted it; that it belongs to the recipient for ever and ever, amen.

REVIEW COMMENTARY



DANE HICKS, Publisher

Benefits paid through the SNAP program to the needy are 100 percent funded by those who pay federal taxes, and the administrative costs of getting those benefits to the folks in need are shared 50/50 by taxpayers at the state and federal level. Like all federally-funded programs those costs ballooned over the years and saw wild swings during Covid: \$265 million in 2019 climbing to \$559 million in 2022 then down to \$428 million last year according to Kansas Action for Children and the Kansas Health Institute. Though it's been a ridiculous concept until the coming of Donald Trump, the federal government now operates under a mantra that the spending of federal tax dollars should be scrutinized and accounted for - like private businesses do.

American voters opted for a more responsible approach to government when they elected Donald Trump president. Kansans who pay both federal and state taxes - and a whole lot of them who pay neither - voted overwhelmingly for a move toward that accountability.

Kelly's obfuscation regarding data on hundreds of millions of tax dollars harkens back to the dark days of Joe Biden's graft, deceit and corruption that America rightfully wants and deserves to put behind us. She should stop the nonsense and let USDA do its job. ###

BRANCO ComicallyIncorrect.com ©2025 Creators.com

WHO LED THE RUSSIA HOAX CONSPIRACY AGAINST TRUMP?

CONNECT THE DOTS...



The Anderson County Review's PHONE FORUM

Record your comments on the topic of your choice at (785) 448-2500. You do not need to leave your name. Comments may be published anonymously. Calls may be edited for publication or omitted.

We finally got our highway strip in Garnett almost completely cleaned up and looking nice with new curbs and new lawns. Now the new owner of the liquor store has put trashy beer signs out on the grass right off the curb on property that probably is in the state right-of-way. Can we not come up with a better method than that? The signs look trashy and diminish the good efforts just made to improve the town.

Trump is to the Kennedy Center what Boss Hogg would be to Buckingham Palace.

I see the local house flipper and his real estate wife are 30,000 behind on their taxes. I thought you couldn't sell a property until you settled the tax bill. Seems like a scam.

We need to turn our attention to uplifting things that are happening. We should look at the positive demonstration of world peace.

I just want to say I think it's wonderful that various states, not Kansas of course for obvious reasons, but various states have called up their national guard troops to try to restore order to the nation's capital in Washington, D.C. How depressing that our nation's capital could have fallen into such a despicable condition of crime and filth. Thank you to the states and those wonderful guardsmen and women, and shame on the Kansas governor for not being willing to contribute. Thank you.

How long has it been since Anderson County had a tax sale? Just saying.

Superman joins ICE, and the left loses its mind

Not all heroes wear capes. However, in Dean Cain's case, he once did, and the heroic trait of protecting others seems to come naturally to him.

Known for his portrayal as the heroic Superman in *Lois & Clark: The New Adventures of Superman*, Cain has been in the hero business since the 1990s. Following his run as the Metropolis Marvel, he donned a different uniform to protect people, becoming a reserve officer for the St. Anthony Police Department in Idaho in 2018. In 2025, he has decided to wear a different shield to once again protect innocent people from harm - the shield of Immigration and Customs Enforcement.

And this time, it drove Democrats to lose their minds. It was glorious.

"For those who don't know, I am a sworn law enforcement officer, as well as being a filmmaker," Cain said in his announcement about joining ICE. "I felt it was important to join with our first responders to help secure the safety of all Americans, not just talk about it."

"So, if you want to help save America, ICE is arresting the worst of the worst and removing them from America's streets. I like that. I voted for that," Cain said. "They need your help. We need your help, to protect our homeland and our families."

Hell hath no fury like a Democrat's scorn for those wanting to protect inno-

NATIONAL COMMENTARY



CHRIS TREMOGLIE, WASHINGTON EXAMINER

cent Americans from violent illegal aliens. Had Cain declared he was pursuing some social justice cause, celebrating "pride month" or an LGBT cause, or announced he was transitioning from Dean to Deanna, the Left would have thrown him a parade. Yet, he was vilified, mocked, and ridiculed because he announced he was protecting citizens from harm.

Democrats are very strange people. Their reaction to Cain joining ICE is just the latest example of that. Consider the temper tantrums and meltdowns by some left-wing entertainers.

Left-wing entertainer John Oliver, host of *Last Week Tonight*, mocked Cain and ICE for the former Superman actor's decision to join ICE.

"There's an old saying in Hollywood:

if all you can get is Dean Cain, you are f*****," Oliver quipped. "I'm not saying that ICE isn't finding people, just say when you're reduced to pinning a badge on the 59 year-old star of *The Dog Who Saved Christmas*, *The Dog Who Saved Christmas Vacation*, *The Dog Who Saved The Holidays*, *The Dog Who Saved Halloween*, *The Dog Who Saved Easter*, and, *The Dog Who Saved Summer*, maybe you are in trouble."

Yet, with many things Oliver regularly says, he was again wrong and factually incorrect. While insinuating that Cain's joining ICE was a sign of disinterest, the federal immigration enforcement agency announced it recently received over 100,000 applications.

Next was actor Kevin McHale, of *Glee* fame, who lambasted Cain's joining of ICE.

"Look I know the entertainment business is in shambles, but imagine being so out of work and desperate for attention (I would know) that you join ICE?" he said. "F***** pathetic loser."

He didn't go on to explain how protecting innocent Americans from ending up like Laken Riley or Rachel Morin was pathetic, but he didn't have to. For people like McHale, they don't care about

SEE TREMOGLIE ON PAGE 16

Trump's fantasy for a new census is a fantasy indeed

Trump wants a new census. If, by this, he means a snap-census before the scheduled 2030 survey, he's demanding that the federal government undertake a gargantuan task with minimal planning and no discernible source of funding. In statistical terms, it'd be like launching D-Day after a month's preparation.

If the White Queen believes six impossible things before breakfast, that the Census Bureau could pull this off would qualify as one of them. The agency couldn't even competently conduct the last regularly scheduled census in 2020.

Given that conducting the census is a core function of the federal government - indeed, mandated by the Constitution - it is outrageous that the last survey missed so badly. It undercounted Florida and a handful of other Red states (as well as Illinois) and overcounted New York and a number of Blue states (plus Ohio and Utah).

Because the apportionment of congressional seats depends on population as determined by the census, these were highly consequential errors that can't be allowed to happen again. There's no legal mechanism for fixing it, though. We just have to do better in 2030. Trump is also, understandably, chagrined that illegal immigrants are included in the census and declares that, going forward, they "WILL NOT BE COUNTED." Here he's going to run smack into the relevant legal texts.

NATIONAL COMMENTARY



RICH LOWRY, King Features Syndicate

Article 1, Section 2 of the Constitution refers to "the Whole Number of free Persons," while the 14th Amendment says "the whole number of persons in each State." In a similar fashion, the U.S. code calls for a "tabulation of total population by States."

So it's hard to see how illegal immigrants can be excluded from the count. As it happens, they don't seem to have much of an effect on the partisan breakdown of congressional seats one way or the other. Although the highest number of illegal immigrants live in California, they are spread around the country, and there are also large numbers in Texas and Florida.

A change that Trump wanted in the 2020 census was the inclusion, once again, of a citizenship question. This is highly relevant information that it's

entirely appropriate to ask.

There was a long period from the 19th century through 1950 when the survey had a citizenship question. Then, it was relegated to the so-called "long form." Finally, the long form itself was axed after 2000.

Now, it's considered a scandal to even think about reviving the question. Trump's proposal to ask the question on the 2020 census encountered stiff resistance and the Supreme Court squashed it.

By the way, non-citizens do have a notable impact on congressional apportionment. Recent research by the Center for Immigration Studies found that all immigrants (naturalized citizens as well as all other categories of immigrants) shifted 14 congressional seats to Democratic states on net in 2020.

Non-citizens also distort the composition of congressional districts. According to the study, there are the same number of citizens in the 13 congressional districts with the highest share of non-citizens as in the 9 districts with the lowest share of non-citizens. In other words, the citizens in those 9 low-immigration districts get 4 fewer representatives than the citizens in the 13 high-immigration districts. It's one man, one vote - with an asterisk.

To take an example from Texas, the

SEE LOWRY ON PAGE 16

Contact your elected leadership:

President Donald Trump

The White House
1600 Pennsylvania Avenue NW
Washington, DC 20500
(202) 456-1111



Governor Laura Kelly

300 SW 10th Ave #241s,
Topeka, KS 66612
(785) 296-3232
email form:
www.governor.kansas.gov



Senator Roger Marshall

Russell Senate Office Building
Washington, D.C., 20510
(202) 224-4774



Senator Jerry Moran

2202 Rayburn House Office Building
Washington, D.C., 20510
(202) 224-6521



3rd Dist. Congressman Sharice Davids

1541 Longworth House Office Bldg.
Washington, D.C., 20515
(202) 225-2865



12 Dist. Sen. Caryn Tyson

300 SW 10th St. Rm 236-E
Topeka, Ks. 66612 (785) 296-6838
P.O. Box 191 Parker, Ks. 66072
(913) 898-2366
caryn.tyson@senate.ks.gov



9th Dist. Rep Fred Gardner

State Capitol Room 512-N
Topeka, KS 66612
Office: (785) 296-7451
fred.gardner@house.ks.gov



Congress shall make no law respecting an establishment of religion, or prohibiting the free exercise thereof; or abridging the freedom of speech, or of the press; or the right of the people peaceably to assemble, and to petition the Government for a redress of grievances.

Lovers of freedom, anxious for the fray.
FORMERLY THE GARNETT PLAINDEALER,
THE ANDERSON COUNTY REPUBLICAN,
THE REPUBLICAN-PLAINDEALER,
THE GARNETT JOURNAL PLAINDEALER, THE GARNETT REVIEW,
THE GREELEY GRAPHIC AND THE ANDERSON COUNTIAN.

The Anderson County Review
EST. 1865

Published with gusto each Thursday by Garnett Publishing, Inc., and entered as Periodicals class mail at Garnett, Ks., 66032, under USPS permit #214-200
Anderson County Review, P.O. Box 409, Garnett, Ks., 66032
(785) 448-3121 • review@garnett-ks.com
GAROLD DANE HICKS, PUBLISHER
Copyright Garnett Publishing, Inc., 2025

Battled the heat and large rocks for more finds

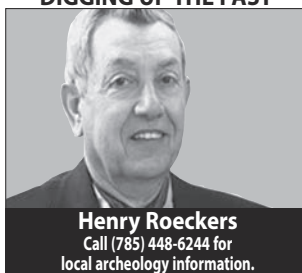
In spite of the heat, I still managed to go digging a couple of afternoons.

I'm sure glad to see a few showers. The clay soil was getting almost impossible to work with. Still moving a lot of rocks, as I'm trying to expose as much of the original foundation as I can. Whoever built this rock house, used some humongous rocks that's for sure. In fact there are a few that I can't move.

I'm also trying to keep my eyes out for ticks and copperheads. The bigger ticks I can see, but those tiny little rascals are impossible to spot, especially on your clothes. So far I haven't seen a snake, which is just fine with me.

Here are three artifact photos I will share with you this week.

DIGGING UP THE PAST



Henry Roeckers
Call (785) 448-6244 for local archeology information.

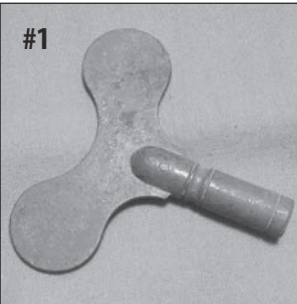
key. It was most likely used to wind a clock.

#2 - Perhaps a brass gas or fuel line cutoff check valve. ???

#3 - Button No. 1 - A two hole mother of pearl. You can actually see the clam shell.

Button No. 2 - A glass four hole ribbed edge button.

Respectfully Submitted by: Henry Roeckers. 12 August 2025



Weddings, anniversaries, engagements, birth announcements, club minutes... They are always FREE in the Review!

120 years ago.... Man gets whipping for insulting a little girl

THAT WAS THEN



PAULA SCOTT - REVIEW HISTORY COLUMNIST

Historical gleanings from past newspapers.

1895 - 130 years ago
August 27 - T. M Hamilton made complaint in the Police Court that one Ed D. Parker did keep a bawdy house and was an inmate thereof, in the city of Garnett. Parker denied the fact and a trial was held in the afternoon which resulted in a judgement of guilty and sentence to pay a fine of \$25, in default of which defendant was committed to jail until fine and costs are paid. Parker appeared as his own attorney in the case.

1905 - 120 years ago
August 21 - A. C. DeHaven, who is employed on the pipeline, was given a good whipping last Saturday night by one of our citizens because of his undue familiarity with a little girl on the street. There have been no arrests. In fact, the people are unanimous in support of the citizen who took the law in his hands and give this low-bred specimen of humanity what he deserved. When men of mature years stoop to insult little girls, no matter whether they be good or bad, there is no law too severe.

August 23 - Those who have rooms to rent to students who expect to attend the Garnett High School can receive some assistance in renting them if you will send your list of rooms to C. H. Oman.

1915 - 110 years ago
August 21 - Great excitement was caused at Kincaid this morning by the shooting of James Fisher, the M., K. & T. agent there, but someone who entered the depot about 2:30 this morning, evidently for the pur-



THE ANDERSON COUNTY REVIEW 08-21-2025 / ARCHIVE
Circa August 2015 - Members of the Garnett Area Chamber of Commerce teamed with local Rotary and Lions chapters to host a watermelon feed for ACJSHS athletes Thursday evening after practices were completed at school.

pose of robbery. Young Fisher is the son of the manager of the Kincaid hotel. He sleeps in the inner office, and, about 2:30 this morning, he was awakened by someone trying to get in. There is a Yale lock on the door, and the intruder gained entrance by forcing the door open with a crowbar. When the robber stepped into the room, Fisher shot at him, firing three shots; but the man rushed at Fisher, and the lamp was upset, causing darkness in the room. In the scuffle, Fisher's revolver fell to the floor. Fisher and the robber clinched, and the robber finally succeeded in getting the revolver from the floor and shot Fisher.

The robber then left the room, and the building and Fisher succeeded in awakening some persons not far from the depot. No trace of the would-be robber has been found. He got nothing.

August 25 - Dr. T. Kirkpatrick had a visitor at his office yesterday, on professional business, but after the visitor had departed, the Doctor discovered the loss of a good pair of trousers he had provided for his comfort in the coming winter. The caller was a stranger to the Doctor, and wanted some cocaine, which he failed to get.

August 26 - The Socialist local will meet at 8 o'clock, over the Peoples Theater, Friday evening.

1925 - 100 years ago
August 27 - Sheriff Weatherman went down into Indian Creek township Tuesday having received a tip that there was a booze factory in that neck o' the woods. The still wasn't a very large one, but the Sheriff found it just the same. He also got the owner, Elwood Curby, along with four barrels of mash and five gallons of the "real stuff." When Curby was brought up before Hizzoner, he pleaded guilty and was fined \$100 and costs and was sentenced to 30 days in jail.

1955 - 70 years ago
August 25 - Garnett Lions club as set Monday evening, Aug. 29, as the date for the annual watermelon feed for the Garnett High school football boys. The event will begin at 7:00 o'clock at the east shelter house. First football practice is scheduled for 4:00 o'clock Thursday afternoon, Sept. 1.

2015 - 10 years ago
August 25 - Extra income expected to come from the end of a property tax abatement on the East Kansas Agri-Energy ethanol plant didn't pan out for local governments this year, as Garnett city and Anderson County officials managed to hold the line on property tax rates with very little extras in 2016.

OPEN FOR BUSINESS

A directory of Anderson County area businesses ready to serve you!

Millers Construction, Inc. EST. 1980

DELLEN GARAGE DOORS LiftMaster GARAGE DOOR OPENERS

We sell & service these brands & more.

Everett Miller / Rodney Miller • (785) 448-4114

ASTRO BUILDINGS Garnett, KS

CEDAR VALLEY TIRE & AUTO SERVICE

601 South Oak Garnett, Kansas (785) 448-3212

Cooper • Jetzon • Kumho

POLARIS HONDA **CAN-AM** Kawasaki

ATV/SXS REPAIR & SERVICE

TURNEY'S SERVICE

1275 Underwood Rd • Burlington, Ks. Mon-Fri 8-6 • Closed Sundays

(785) 448-8222

ARCTIC CAT YAMAHA JOHNDEERE

• Building Packages

CEDAR VALLEY METAL SUPPLY

• Windows & Doors

Manufacturers of Metal Panels & Trim

Garnett • (785) 448-1614

Sand, Dirt & Gravel hauling for driveways, septic & more

RON BURNEY

Owner/operator 605.381.4441

Garnett, Kansas

E-Statements & Online Banking

Serving The Area Since 1991

GSSB FDIC

Garnett • Colony • Hepler Ottawa • Pomona • St. Paul • Walnut

PRINTING

Garnett Publishing, Inc. • (785) 448-3121

review@garnett-ks.com

Traditional Pennsylvania Dutch Cooking

Dutch Country Cafe

Call (785) 448-5711

309 N. Maple • Garnett • Mon-Sat 6 AM-2:30 PM

Miller's Specializing in barbed wire fence & corrals

Fencing & Welding

Aaron Miller (785) 433-3878

MONT IDA MEATS

Howard Yoder Owner-Operator

22468 NW Indiana Rd • Weida, Ks (785) 489-2212

Inspected Facility

MONDAY Slaughter Day TUESDAY-FRIDAY 8:00 a.m. - 5:00 p.m. SATURDAY 8:00 a.m. - 12:00 p.m. SUNDAY Closed

Heck's Moving Service

Furniture • Appliances • Garage etc.

Ashton Heck

(785) 204-0369

AL'S DOOR CO.

Overhead Garage Doors & Openers Residential • Commercial • Farm Sales • Installation • Repairs

Allen Brandes - Owner

785-248-9800 242 East 5th albrandes@alsdoorcompany.com Garnett, KS 66032

YCS YUTZY Custom Structures

1-800-823-8609

Post Frame Construction Residential Slab Homes

www.yutzycustomstructures.com

You saw this. So will your customers. Advertise here for just \$9/week. (785) 448-3121

Quality Matters

ADAMSON BROS Heating & Cooling

785-242-9273 www.adamsonbros.com

102 S. Walnut Ottawa, KS

AUBURN PHARMACY

429 N. Maple • Next to Country Mart (785) 448-6122

Reliable, Dependable, Consistent Always There - Always Caring

Just 9 bucks a block per week to list your business here! (785) 448-3121

ALGAE...

FROM PAGE 1

runs from April 1 to Oct. 31, as do the Harmful Algae Blooms (HAB) response program's active operations. Kansans should remain vigilant while engaging in activities taking place in or on the water, such as swimming, boating, and fishing.

A HAB may look like foam, scum or paint floating on the water and be colored blue, bright green, brown or red. Blooms can develop rapidly; if the water appears suspicious or there is decaying algae on the shore, avoid contact and keep dogs away. These toxins can be absorbed by ingestion, inhalation of aerosols and even skin contact. Symptoms vary depending upon the type of exposure (e.g., direct contact, ingestion, inhalation) but can include rash, vomiting, diarrhea, fever, sore throat, and headache.

If you, or your pets, come into contact with algae rinse the area with clean, fresh water. Suspected HAB-related health incidents, whether human or animal, regardless of season, should be reported as soon as possible at kdhe.ks.gov/1163.

Active Advisories

Warning

- Atchison County Lake, Atchison County
- Edgerton City Lake, Johnson County (Added August 15)
- Frazier Lake, Grant County
- Gathering Pond, Geary County
- Hodgeman State Fishing Lake, Hodgeman County
- King Lake, Lyon County
- Lake Afton, Sedgwick County
- Melvern Outlet River Pond, Osage County
- Rock Garden Pond, Shawnee County
- Wilderness Lake (Overland Park), Johnson County

Watch

- Atchison City Lake #9, Atchison County
- Atchison State Fishing Lake, Atchison County
- Eagle Lake (Bel Aire), Sedgwick County
- Lake Shawnee, Shawnee County
- Marion County Lake, Marion County
- Melvern Outlet Swim Pond, Osage County (Lowered August 15)
- Ottawa State Fishing Lake, Ottawa County (Lowered August 15)
- Peter Pan Park Pond, Lyon County (Added August 15)
- River Pond (Tuttle Creek State Park), Pottawatomie & Riley Counties (Added August 15)
- Wooster Lake, Lyon County

Lifted

- Kingston Lake, Johnson County

A Hazard status indicates that a HAB is present, and extreme conditions exist.

When a hazard is issued, KDHE recommends the following precautions be taken:

Signage should be posted at all public access locations.

It is recommended that either a portion of the lake or the entire lake or zone, be closed to the public.

In some cases, the adjacent land should be closed as well. Actual setback distances will be determined on a site-specific basis, if necessary.

In zoned lakes, if a lake zone is issued at a Hazard level, all other adjacent lake zones may be recommended for an advisory status dependent on lake conditions.

A Warning status indicates that a HAB is expected or present.

When a warning is issued, KDHE recommends the following precautions be taken:

Signage should be posted

at all public access locations.

Inhalation of spray or aerosols may be harmful.

Lake water is not safe to drink for pets or livestock.

Lake water, regardless of blue-green algae status, should never be consumed by humans.

Water contact should be avoided.

Fish may be eaten if they are rinsed with clean water and only the fillet portion is consumed, while all other parts are discarded.

Do not allow pets to eat dried algae.

If lake water contacts skin, wash with clean water as soon as possible.

Avoid areas of visible algae accumulation.

A Watch status means that a HAB is possible and may be present.

When a watch is issued, KDHE recommends the following precautions be taken:

Signage should be posted at all public access locations.

Water may be unsafe for humans/animals.

Avoid areas of algae accumulation and do not let people/pets eat dried algae or drink contaminated water.

Swimming, wading, skiing and jet skiing are discouraged near visible blooms.

Boating and fishing are safe. However, inhalation of the spray may affect some individuals. Avoid direct contact with water and wash with clean water after any contact.

Clean fish thoroughly with potable water and eat fillet portion only.

Advisories are Lifted when cell densities and toxin concentrations dissipate to levels below the Watch thresholds.

KDHE investigates publicly accessible bodies of water for blue-green algae when the agency receives reports of potential algae

blooms in Kansas lakes. Based on credible field observation and sampling results, KDHE reports on potentially harmful conditions.

If you observe a scum or paint-like surface on the water, small floating blue-green clumps or filaments in the water, or if the water is an opaque green, avoid contact and keep pets away. These are indications that a harmful bloom may be present. Pet owners should be aware that animals that swim in or drink water affected by a harmful algal bloom or eat dried algae along the shore may become seriously ill or die.

For information on blue-green algae and reporting potential harmful algal blooms, please visit kdhe.ks.gov/HAB and check out our interactive story and informative video.

PAWSITIVE TAILS pet adoption



THE ANDERSON COUNTY REVIEW 8-21-2025 / SUBMITTED
Valerie is a German Shepherd mix. She loves to play with other dogs and snuggle with her person. She's a medium size dog (25-59 pounds), black in color. Fee to adopt is \$175. To learn more about Valerie and other dogs available for adoption visit: www.PawsitiveTailsKC.org

Warning: Drive sober or get pulled over this Labor Day

The Kansas Drive To Zero Coalition and law enforcement across the state urge drivers to "Drive Sober or Get Pulled Over" as increased patrols will be in effect from Aug. 16 to Sept. 1 ahead of the Labor Day holiday to support this national traffic safety campaign.

In Kansas, preliminary 2024 data shows that 83 people died and more than 1,100 people were injured in crashes involving an alcohol-impaired driver.

"A drunk driver impacts

everyone on the road," said KDOT Behavioral Safety Manager Gary Herman. "Being responsible is simple. Never drink and drive."

Impaired driving also can lead to jail time, driving privileges being restricted or revoked, monthly fees associated with an ignition interlock and higher insurance rates. According to the National Highway Traffic Safety Association, the average cost of a DUI is \$10,000. Nationally, crash-

es involving an alcohol-impaired driver resulted in \$57 billion in economic costs.

Planning ahead is key to driving sober. If you choose to drink, arrange for a designated driver or use a ride-sharing service or cab. If a friend is leaving the celebration impaired, take the keys. If you see an impaired driver on the road, contact law enforcement.

For more information on impaired driving, visit the NHTSA website.

DID YOU KNOW?

The Anderson County Review is the longest continuously operating business in Anderson County, founded in 1865?

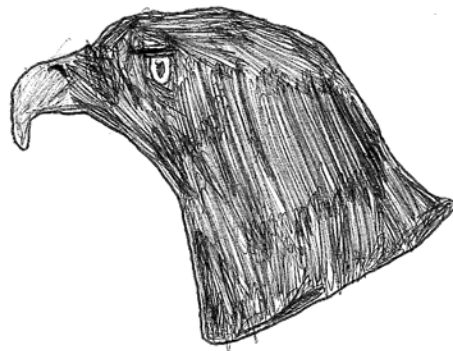


CreativeKids - Part 6



The Anderson County
Review

Jasmine Ware • GES 6th Grade • Mrs. Kern



The Anderson County Review
112 W. 6th Garnett, KS
(785) 448-3121

The Anderson County
Review
• Since 1865

Patriots Bank

Member FDIC. Equal Opportunity Lender

WWW.PatriotsBank.com

Business Name: Patriots Bank
Garnett, Princeton, Ottawa
Garden, Lake Osark
(785) 448-3191

DOD
e equipment

farm equipment sales

City Greeley
Address: 114 E. Brown St.
(785) 867-2600

New Holland
Agriculture

DEADLINES..

FROM PAGE 1

with easy online reservations. Free shuttle transportation, made possible by MFA Oil, is available for campers at Lake Garnett to and from the concert. Limited shuttle service is available to and from Veterans Memorial Park to the concert and back. No shuttle service is available

to Cedar Valley Reservoir (7 mi west of Garnett). However, each campsite will receive free parking pass that allows for entry in the park at no charge. Upon arrival, all campers are to check-in at the Camp Host/Will Call building located across from the rodeo arena (follow the signs) to receive

their welcome packet with parking pass. While camping, join in the fun on Friday night, September 26 in the Cornstock Cornhole Tournament to benefit the Cornstock Scholarship. Cash and prizes for top teams, along with some fun giveaways for all. Enjoy

breakfast on Saturday and touring Garnett before the show. Some campers have been known to be "Cornstalked" with prizes too! The Cornstock Music Festival's lineup includes country music singer/songwriter Chris Janson, the legendary Southern

Rock band - The Kentucky Headhunters, rising star Kelsey Hart, and the regional red dirt country band favorite - Trevor Holman and The Haymakers. Gates open at 3:30 p.m. Cornstock is a lawn chair event. Free admission to kids 0-5 accompanied by an adult. Designated beer

and non-beer sales areas, food court and Outdoor Fun Mall. For more information, FAQs and more, you can find it all by visiting the festival website: www.cornstock.net

Public Notice

Your RIGHT to know, guaranteed by Kansas Law.

Current statewide Public Notice archive available at www.kansaspublicnotices.com

Notice of suit

(First published in The Anderson County Review, Thursday, August 14, 2025.)

IN THE DISTRICT COURT OF ANDERSON COUNTY, KANSAS CIVIL DEPARTMENT

Lakeview Loan Servicing, LLC Plaintiff, vs. Braden Rigdon a/k/a Braden William Rigdon; Cheyenne Elizabeth Nipko; Unknown Spouse, if any, of Braden Rigdon a/k/a Braden William Rigdon; John Doe (Tenant/Occupant); Mary Doe (Tenant/Occupant), Defendants.

officers, successors, trustees, creditors and assigns of any defendants that are existing, dissolved or dormant corporations; the unknown executors, administrators, devisees, trustees, creditors, successors and assigns of any defendants that are or were partners or in partnership; the unknown guardians, conservators and trustees of any defendants that are minors or are under any legal disability; and the unknown heirs, executors, administrators, devisees, trustees, creditors and assigns of any person alleged to be deceased, and all other persons who are or may be concerned.

You are notified that a Petition has been filed in the District Court of Anderson County, Kansas, praying to foreclose a real estate mortgage on the following described real estate:

The East 33 feet of Lot Fifteen (15) and the West 2 feet of Lot Sixteen (16) along with the vacated alley between Lots Fifteen (15) and Sixteen (16) In Block Seven (7) in Chapman's Addition to the City of Garnett, Anderson County, Kansas, commonly known as 327 W 9th Ave, Garnett, KS 66032 (the "Property")

and all those defendants who have not otherwise been served are required to plead to the Petition on or before the September 24, 2025, in the District Court of Anderson County, Kansas. If you fail to plead, judgment and decree will be entered in due course upon the Petition.

NOTICE

Pursuant to the Fair Debt Collection Practices Act, 15 U.S.C. §1692c(b), no information concerning the collection of this debt may be given without the prior consent of the consumer given directly to the debt collector or the express permission of a court of competent jurisdiction. The debt collector is attempting to collect a debt and any information obtained will be used for that purpose.

Prepared By: SouthLaw, P.C. Blair T. Gisi (KS # 24096) 13160 Foster, Suite 100 Overland Park, KS 66213-2660 (913) 663-7600 (913) 663-7899 (Fax) Blair.Gisi@southlaw.com Attorneys for Plaintiff (252990) ag1413*

Notice of foreclosure

(First published in The Anderson County Review, Thursday, August 7, 2025.)

Millsap & Singer, LLC 8900 Indian Creek Parkway, Suite 180 Overland Park, KS 66210 (913) 339-9132 (913) 339-9045 (fax)

IN THE DISTRICT COURT OF ANDERSON COUNTY, KANSAS CIVIL DEPARTMENT

Village Capital & Investment LLC Plaintiff, vs. Jeremy Darr, Jane Doe, John Doe, Harold E. Guy (Deceased), and Unknown Heirs of Harold E. Guy (Deceased), et al., Defendants

executors, devisees, trustees, creditors, and assigns of any deceased defendants; the unknown spouses of any defendants; the unknown officers, successors, trustees, creditors and assigns of any defendants that are existing, dissolved or dormant corporations; the unknown executors, administrators, devisees, trustees, creditors, successors and assigns of any defendants that are or were partners or in partnership; and the unknown guardians, conservators and trustees of any defendants that are minors or are under any legal disability and all other person who are or may be concerned:

You are hereby notified that a Petition has been filed in the District Court of Anderson County, Kansas by Village Capital & Investment LLC, praying to foreclose a mortgage on the following described real estate:

LOT TEN (10) IN BLOCK TWO (2) IN THE PARKLANE ADDITION (1970 REVISED) TO THE CITY OF GARNETT, ANDERSON COUNTY, KANSAS. Parcel ID No. R2577/0020993001002008000. Commonly known as 314 N Ash St., Garnett, KS 66032 ("the Property") MS

226000 and all those defendants who have not otherwise been served are required to plead to the Petition on or before September 17, 2025 in the District Court of Anderson County, Kansas. If you fail to plead, judgment and decree will be entered in due course upon the request of plaintiff.

MILLSAP & SINGER, LLC By: Dwayne A. Duncan, #27533 dduncan@msfirm.com 612 Spirit Dr. St. Louis, MO 63005 (636) 537-0110 (636) 537-0067 (fax) ATTORNEYS FOR PLAINTIFF

MS 226000.453917 KJFC MILLSAP & SINGER, LLC IS ATTEMPTING TO COLLECT A DEBT AND ANY INFORMATION OBTAINED WILL BE USED FOR THAT PURPOSE. ag713*

Notice of sale

(First published in The Anderson County Review, Thursday, August 14, 2025.)

Millsap & Singer, LLC 8900 Indian Creek Parkway, Suite 180 Overland Park, KS 66210 (913) 339-9132 (913) 339-9045 (fax)

IN THE DISTRICT COURT OF ANDERSON COUNTY, KANSAS CIVIL DEPARTMENT

Freedom Mortgage Corporation Plaintiff, vs. David Dewayne Dell Jr, et al. Defendants,

Under and by virtue of an Order of Sale issued to me by the Clerk of the District Court of Anderson County, Kansas, the undersigned Sheriff of Anderson County, Kansas, will offer for sale at public auction and sell to the highest bidder for cash in hand on September 4, 2025 at the time of 10:00 AM at the West Side Entrance of the Anderson County Courthouse, City of Garnett, County of Anderson, Kansas, the following real estate:

LOT FOUR (4) AND THE EAST HALF (E/2) OF LOT FIVE (5) IN BLOCK FOURTEEN (14) IN THE CITY OF GARNETT, ANDERSON COUNTY, KANSAS, Parcel ID No. 0020993002013002000. Commonly known as 114 W 1st Ave, Garnett, KS 66032 ("the Property") MS227045

to satisfy the judgment in the above-entitled case. The sale is to be made without appraisal and subject to the redemption period as provided by law, and further

subject to the approval of the Court. Anderson County Sheriff

MILLSAP & SINGER, LLC By: Aaron M. Schuckman, #22251 aschuckman@msfirm.com Dwayne A. Duncan, #27533 dduncan@msfirm.com 612 Spirit Dr. St. Louis, MO 63005 (636) 537-0110 (636) 537-0067 (fax) ATTORNEYS FOR PLAINTIFF

MILLSAP & SINGER, LLC AS ATTORNEYS FOR FREEDOM MORTGAGE CORPORATION IS ATTEMPTING TO COLLECT A DEBT AND ANY INFORMATION OBTAINED WILL BE USED FOR THAT PURPOSE. ag1413*

Notice of hearing and public meeting for Garnett wastewater collection improvements

(Published in The Anderson County Review, Thursday, August 21, 2025.)

PUBLIC HEARING AND PUBLIC MEETING NOTICES

PUBLIC MEETING

The City of Garnett, Kansas will hold a public meeting on September 9, 2025, at 6:00 p.m. in City Hall to present and discuss alternatives for wastewater collection system improvements. The improvements will be funded under the low interest State Revolving Loan Fund Program through the Kansas Department of Health and Environment. The Loan application will include funding for the following improvements:

- 1. Sewer Collection System

Improvements consisting of: improvements with an estimated amount of \$17,806,220.

The anticipated amount of the loan application request will be \$17,806,220 and the total project cost is estimated at \$17,806,220 The alternatives will be discussed at the public meeting.

PUBLIC HEARING

The City of Garnett, Kansas will hold a public hearing on September 9, 2025, at 6:00 p.m. in City Hall to present and discuss the proposed improvements for the wastewater collection system project. The improvements will be funded under the low interest State Revolving Loan Fund Program through the Kansas Department of Health and Environment. The Loan

application will include funding for the following improvements:

- 1. Sewer Collection System Improvements consisting of improvements with an estimated amount of \$17,806,220.

The anticipated amount of the loan application request will be \$17,806,220 and the total project cost is estimated at \$17,806,220. The anticipated increase in sewer use charges will be discussed. The proposed improvements will be explained and comments by the public will be considered. Oral and written comments will be accepted. Any written comments will become a part of the City's record of public hearing.

Notice of budget hearing for USD 365

(Published in the Anderson County Review on August 21, 2025.)

State of Kansas Budget Form USD-A USD #365 2025-2026

Notice of Hearing 2025-2026 Budget

The governing body of Unified School District 365 will meet on the 4th day of September 2025 at 6:45 PM at 101 S. Mary, Greeley, KS 66033 for the purpose of hearing and answering objections of taxpayers relating to the proposed use of all funds and the amount of tax to be levied. Detailed budget information, including budget profile, building needs assessment and Board state assessments review is available at the district office on the district website and will be available at this hearing. The Amount of 2025 Tax to be Levied and Expenditures (published below) establish the maximum limits of the 2025-2026 Budget. The "Est. Tax Rate" (column 7), shown for comparative purposes, is subject to slight change depending on final assessed valuation.

Table with columns: Code 99 Line, 2023-2024 Actual Expenditures (1), Actual Tax Rate* (2), 2024-2025 Actual Expenditures (3), Actual Tax Rate* (4), 2025-2026 Proposed Budget Expenditures (5), Amount of 2025 Tax to be Levied (6), Est. Tax Rate* (7). Rows include OPERATING, SPECIAL REVENUE, DEBT SERVICE, COOPERATIVES, and TOTAL USD EXPENDITURES.

State of Kansas Budget Form USD-A USD #365 2025-2026

Notice of Hearing 2025-2026 Budget

The governing body of Unified School District 365 will meet on the 4th day of September 2025 at 6:30 PM at 101 S. Mary, Greeley, KS 66033 for the purpose of hearing and answering objections of taxpayers relating to the proposed use of all funds and the amount of tax to be levied. Detailed budget information, including budget profile, is available at the district office and will be available at this hearing.

Table with columns: Code 99 Line, 2023-2024 Actual Expenditures (1), Actual Tax Rate* (2), 2024-2025 Actual Expenditures (3), Actual Tax Rate* (4), 2025-2026 Proposed Budget Expenditures (5), Amount of 2025 Tax to be Levied (6), Est. Tax Rate* (7). Rows include OTHER, Assessed Valuation, Outstanding Indebtedness, July 1, and TOTAL USD DEBT.

Board President and Clerk of the Board signatures.

Exceeding Revenue Neutral for the 2025-2026 School Year

The governing body of Unified School District 365 will meet on the 4th day of September 2025 at 6:30 PM at 101 S. Mary, Greeley, KS 66033 for the purpose of hearing and answering objections of taxpayers relating to the proposed use of all funds and the amount of tax to be levied. Detailed budget information, including budget profile, is available at the district office and will be available at this hearing.

Table with columns: 2024-2025 Actual Taxes Levied, Actual Tax Rate, Revenue Neutral Taxes, Revenue Neutral Tax Rate, 2025-2026 Proposed Taxes to be Levied, Proposed Tax Rate. Rows include General, ALL OTHER FUNDS, and Revenue Neutral Calculation.

Board President and Clerk of the Board signatures.

Kansas Trails, Inc., launches to connect, support and elevate trails across the state

(OVERLAND PARK, Kan.) – With the intention of elevating Kansas as a destination for trails and outdoor connection, Kansas Trails, Inc. (KTI), has launched as the first statewide nonprofit organization dedicated to connecting, supporting, and empowering the vibrant trail community across the state.

Designed to serve every trail organization, city, steward, and volunteer in Kansas, KTI aims to provide trail maps, expert resources, technical assistance, advocacy and support to help ensure Kansas trails are accessible, sustainable and thriving both now and for future generations.

“Kansas Trails, Inc., is here to empower everyone who loves, builds, and maintains trails,” said Mike Scanlon, KTI Executive Director. “We commit ourselves to developing and supporting trail systems that enrich public health, fuel local economies, and preserve the natural and cultural heritage of this state.”

As a central hub for trail enthusiasts, KTI offers an array of services and resources, including:

- Interactive maps to help

Kansans discover trails (See KTI's Kansas trail map);

- technical assistance and resources for communities and organizations to plan, design and construct sustainable trails;

- promotional assistance to help spread the word about trail events across the state and inspire more people to explore and take advantage of the benefits of connecting with the outdoors;

- networking and membership opportunities to help build and foster a statewide community of trail advocates (Become a member);

- advocacy and support to ensure Kansas trails are accessible, sustainable, and well-maintained.

As part of its mission to connect and empower trail users, builders and communities, KTI recently launched its Trail.Talk.Tuesday free webinar series. The hour-long webinars, which started July 8, are scheduled for noon on the second Tuesday of each month through January 2026. With topics ranging from planning, building and maintaining trails, to exploring and celebrating Kansas' thriving trail

network, the series has something for everyone who has a passion for trails.

KTI also works in close partnership with state and local agencies to underscore the importance of trails in boosting outdoor recreation, rural revitalization, tourism, and community well-being.

“In every trail we support, every community we empower, and every mile we map, we carry forward the belief that Kansas belongs to all who walk it – now and for generations to come,” Scanlon said.

Born from a virtual roundtable of local leaders, nonprofits, and state agencies, KTI grew into a grassroots coalition. With startup funding from Sunflower Foundation, a statewide health philanthropy serving all of Kansas, KTI became an established nonprofit and was granted 501(c)(3) status by the Internal Revenue Service.

The organization is governed by a board of directors consisting of dedicated trail advocates, community leaders and outdoor enthusiasts from across Kansas.

For more information: Visit: www.kstrails.org.

Final days for blood donors to get free A1C testing

Blood donors have less than two weeks left to take advantage of free A1C testing from the American Red Cross Kansas and Oklahoma Region.

The free testing is available through Aug. 31 and provides donors with an opportunity to support patients in need while gaining valuable insights into their own health.

Anyone who donates blood at Red Cross blood drives or donation centers will receive a free A1C test — a critical measure of blood sugar levels that can provide early insight into their diabetes risk. The results are a valuable tool for donors, particularly since one in 10 Americans lives with diabetes, and nearly 25% of cases go undiagnosed, according to the Centers for Disease Control and Prevention (CDC).

“Blood donations help save lives, and this August, we're proud to give something back to donors — a better understanding of their own health,” said Jane Blocher, Executive Director of the Red Cross of Greater Kansas.

HEALTH BENEFITS FOR DONORS - Blood donors will receive their A1C results within two weeks through the Red Cross Blood Donor App or online donor portal. Donors with elevated results are encouraged to follow up with their health care provider. The free A1C testing is in addition to the standard health screening all donors receive, which

includes recording their pulse, blood pressure, temperature and hemoglobin levels. These comprehensive checks provide donors with a snapshot of their overall health.

URGENT NEED FOR TYPE O AND B NEGATIVE BLOOD - While all blood types are needed, the Red Cross is urging those with type O and type B negative blood to donate. Type O positive is the most transfused blood type, compatible with 85% of patients, while type O negative is the universal blood type used in emergencies. Type B negative is rare, found in less than 2% of the population. Patients with B negative blood can only receive transfusions from other B negative or O negative donors, making donations especially important.

How to Donate

Donating blood is easy and convenient. Donors can schedule an appointment through the Red Cross Blood Donor App, by visiting redcrossblood.org or by calling 1-800-RED CROSS (1-800-733-2767). As a thank-you, all donors who give blood between Aug. 1-28, 2025, will receive a \$15 e-gift card to a merchant of their choice. Additionally, free A1C testing will be performed on all successful donations made Aug. 1-31, 2025, (one test result per donor in a 12-month period). For more details, visit RedCrossBlood.org/Test.



Colony Day 2025

Seeds of Tomorrow

Saturday, August 30th

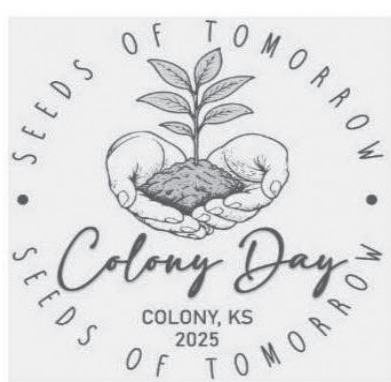


Have fun at Colony Day!

LUMBER • STANLEY DOORS • VALSPAR PAINT
CERTAINT EED VINYL SIDING • PENOFIN DECK STAIN
INTERIOR DOORS • MOLDING • CONSTRUCTION SUPPLIES

Find Us FAST in
Names and Numbers
Five Star Performance

THE NEW KLEIN LUMBER CO.
201 W. MADISON • IOLA • (620) 365-2201



Saturday, August 30, 2025

"Seeds of Tomorrow"

*All events held on Broad Street unless otherwise noted

**Drinks for kids and bottles of water provided by Diamond C Livestock and Hay (free - while supplies last)

***Raffle Prize Drawings to take place throughout day

7:30	WALK/RUN – Registration at Tent – Walk begins at 8 am - sponsored by Crest Cross Country
8 am	VENDOR SET-UP
8 am – 11 am	HOMEADE SALSA COMPETITION REGISTRATION & TASTING – Next to Registration Tent - sponsored by Jennifer Chester and Blake Boone of Crown Realty
8 am – 2 pm	CORN HOLE TOURNAMENT REGISTRATION – Registration Tent
10:30	REGISTRATION FOR KIDS TRACTOR PULL – Next to Registration Tent
11 am	FISH AND CHIPS – Colony Lions Club KIDS TRACTOR PULL – Rick Feuerborn
12 Noon	PARADE LINE-UP – at Crest School – Parade Judging begins at 12:30
1 pm	PARADE – Grand Marshals – Cathy & Dennis Allen, Debbie & Leonard Wools, Marilyn & the late Harold Thexton
FOLLOWING PARADE	KIDS CASH GRAB, KIDS GAMES & LAND TURTLE RACE ICE CREAM SOCIAL – sponsored by Colony Christian Church
2 pm	CORN HOLE REGISTRATION DEADLINE TERRY ELLIS MEMORIAL PONY PULL – North of old carwash - Jay Franklin
2:30	PIE EATING CONTEST CAKE WALK – In front of Post Office
3 pm	KIDS COOL DOWN – East of Registration Tent - Colony Fire Dept CORN HOLE TOURNAMENT
MUSIC ENTERTAINMENT – featuring TREVOR HOLMAN and the HAYMAKERS	
Starting at 4 pm	
5 pm	SUPPER Sponsored by GSSB Colony Branch, served by Crest STUCO

6 pm Grand Prize Drawing:
2-night stay at Still Waters Edge Retreat
Yates Center, KS

Windriders

Country - Classic Rock - Blues

Colony Street Dance
AUGUST 30th • 8 - MIDNIGHT
DOWNTOWN COLONY, KS
Proudly Sponsored By

Diamond C Livestock and Hay

Have a great time at Colony Day!

KANSAS FARM BUREAU
The Voice of Agriculture

209 S. Maple • Garnett, Kansas • (785) 448-0099

Looking forward to seeing everyone at Colony Day!

Serving The Area Since 1899

GSSB FDIC
GOPPERT STATE SERVICE BANK

Garnett • Colony • Hepler • Ottawa • Pomona • St. Paul • Walnut

Sherry says, see you at the...

Colony Day!

BENJAMIN REALTY – 201 N. Maple • Garnett
O(785) 448-2550-H(785) 241-0532-C(785) 304-2029
benjaminrealty@earthlink.net

CALENDAR

- Thursday, August 21, 2025**
 4:30 p.m. - Farmer's Market
 5:30 p.m. - PM Yoga
 6:00 p.m. - 13 Point Pitch & Snacks at Garnett Senior Center
 7:00 p.m. - Alcoholics Anonymous
- Friday, August 22, 2025**
 8:45 a.m. - AM Yoga
 5:30 p.m. - Water Aerobics
- Monday, August 25, 2025**
 8:45 a.m. - AM Yoga
 9:00 a.m. - Anderson County Commission Meeting
 5:30 p.m. - TOPS Meeting
 5:30 p.m. - Water Aerobics
 6:00 p.m. - Celebrate Recovery
 6:00 p.m. - Hot Yoga with Jenelle
- Tuesday, August 26, 2025**
 10:00 a.m. - Storytime For Preschoolers
 12:00 p.m. - Rotary International Club Meeting
 5:30 p.m. - PM Yoga
 6:00 p.m. - City Commission Mtg
 6:30 p.m. - American Legion Bingo
 7:00 p.m. - Alcoholics Anonymous
- Wednesday, August 27, 2025**
 8:45 a.m. - Yoga
 1:00 p.m. - Duplicate Bridge
 5:30 p.m. - Water Aerobics
 6:30 p.m. - Awana
- Thursday, August 28, 2025**
 2:00 p.m. - Emergency Food Assistance Program - Harvesters
 4:30 p.m. - Garnett Farmers Market
 5:30 p.m. - PM Yoga
 6:00 p.m. - 13 Point Pitch & Snacks at Garnett Senior Center
 6:00 p.m. - Garnett Republican Party Meeting
 7:00 p.m. - Alcoholics Anonymous
- Friday, August 29, 2025**
 8:45 a.m. - AM Yoga
 5:30 p.m. - Water Aerobics
- Monday, September 1, 2025**
 8:45 a.m. - AM Yoga
 9:00 a.m. - Anderson County Commission Meeting
 4:00 p.m. - Greeley PTO
 5:30 p.m. - TOPS Meeting
 5:30 p.m. - Water Aerobics
 6:00 p.m. - Celebrate Recovery



THE ANDERSON COUNTY REVIEW 08-21-2025 / SUBMITTED

The Garnett Enduro Club was able to have road go kart races back in Garnett last week. Over 100 entries came from states including Illinois, Texas, Oklahoma and Nebraska. Thanks to the grassroots group and donations made possible for the resurfacing of the lake road allowing this event to come back to Garnett. Young racers to older ones loved the surface of the track. With the help of the City employees, many volunteers, Anderson County wrestlers, ambulance department and others help make this two day event happen. The two young racers inset in the above picture are, from left: Jacob Hoff, Fulton, Illinois and Case Simpson, Edgerton. They won first and third place in their respective divisions.

Richmond Food Pantry receives grant to promote healthy food choices

RICHMOND - Earlier this year, the Frontier Extension District received a \$5,000 mini-grant from the Kansas Health Foundation as part of the Hunger Free Kansas initiative. This funding created an opportunity for the district to partner with the Richmond Food Pantry to promote healthy food choices within the local community.

With the grant, the pantry implemented several enhancements aimed at improving both the physical layout and overall nutritional environment. Upgrades included movable shelving for better food organization, a refrigerator/freezer unit to increase capacity and access to fresh and perishable items, expanded storage, and a

portable welcome sign that can be rolled out to indicate when the pantry is open. The pantry also introduced nutrition nudges—strategically placed signs and visual cues on the new shelving—to encourage healthy food selections among pantry users.

The mini-grant is part of a larger statewide effort led by the Kansas Health Foundation, which committed \$250,000 to K-State Extension to distribute across the state in the form of mini-grants through a proposal process. Ultimately, these mini-grants were distributed to 20 K-State Extension local offices to support food security and anti-hunger efforts across 33 of Kansas' 105 counties.

According to Feeding America, one in eight Kansans and one in five Kansas children experience food insecurity.

The Richmond Food Pantry is located within the United Methodist Church in Richmond and serves residents of both the Richmond and Princeton communities. The pantry is open on Tuesdays from 3 to 5 p.m., and community members are encouraged to visit during operating hours to access food and nutrition resources.

The Kansas Health Foundation is a philanthropy dedicated to improving the health of all Kansans. For more information about the Kansas Health Foundation, visit www.kansashealth.org.



THE ANDERSON COUNTY REVIEW 08-21-2025 / TERESA YOUNG

Dane Hicks, left, presents Kim Wernsman the \$300 customer appreciation prize. Sponsored by Woody's Liquor, 4th Street Flea Market, GSSB, Trade Winds, Anderson County Review, 7th Street Grocery, Pizza Hut, Garnett Home Center, Bauman's Carpet & Furniture, Farmers State Bank, Cedar Valley Tire & Auto Service, Farmers Market, Agency West, Arnold's Prairie Greenhouse and ACE Hardware.

Mulch rings help to promote healthy trees

Homeowners who are looking for ways to promote healthy, growing trees in their yard are well-advised to remember this axiom: A ring is a tree's best friend.

Kansas State University horticulture expert Cynthia Domenghini said a mulch ring is a circular border surrounding the base of a tree. When planting a new tree, she recommends including a mulch ring that covers the soil beneath the tree canopy.

"One benefit of using a mulch ring around trees in a lawn area is to prevent maintenance equipment from coming too close and damaging the trunk," she said.

"The mulch ring around trees in a lawn should be at least 3-6 feet in diameter," Domenghini said. "Ideally, the ground beneath the entire canopy of the tree should be covered."

The mulch ring should include a 4-6 inch diameter circle of bare soil at the center so that mulch is not right up next to the trunk, to prevent rotting. The mulch should be 2-4 inches deep and re-applied annually.

"If mulch is applied too deep (more than four inches), the mulch can actually restrict oxygen from the soil and negatively affect the tree's root development," Domenghini said.

CALL AHEAD- PICK UP (913) 898-6211

Monday: \$1.50 tacos, rice & beans; \$2 Natural Light cans
Tuesday: Sue's choice!
Wednesday: Fried chicken
Thursday: Sue's homemade meatloaf
Friday: Chicken fried steak or chicken fried chicken
Saturday: Wings- EVERY Saturday!
 1st Saturday: Ribeye Steak
 2nd Saturday: Smothered pork shops
 3rd Saturday: Boiled Shrimp
 4th Saturday: Fried Catfish
 5th Saturday: Sue's Choice
Sunday: Homemade pan-fried chicken w/sides

ALL AVAILABLE FAMILY-STYLE!

PAN-FRIED CHICKEN

Every Sunday 11 a.m. - 2 p.m. Homemade

Where customers are treated like family!

I-Stop Gas ♦ Store ♦ Café ♦ Bar I-Stop

423 E. Woodward St. • Parker, Kansas

AGENCY WEST INSURANCE

Courtney Tucker, Agent
courtney.tucker@agencywestins.com

• Auto • Health • Business & Commercial
 Work Comp • Bonding • Homeowners • Life
 • Recreational Vehicle • Farm

415 S. Oak St. • Garnett • (785) 448-2284

Join us for

BUILDING A LIFE AND BUSINESS GOD LOVES TO BLESS!

Guest minister **Duke Duvall** is the president of Duvall Marketing & Development Group, its Bible-based business principles shared with more than a million business owners and employees worldwide.

A powerful 4-hour life & business seminar
8 A.M. SATURDAY, AUGUST 23

An evening of singing and family inspiration...
7 P.M. FRIDAY, AUGUST 22

Mt. Ida Church • 18089 NW Broomall St., Welda, KS
 FOR MORE INFORMATION CONTACT VERNON YODER (785) 448-8042

SHOP AT HOME

The Anderson County **Review**
 ANDERSON COUNTY'S ONLY LOCALLY-OWNED NEWSPAPERS
 785-448-3121 / FAX 785-448-6253
 email: review@garnett-ks.com

Anderson County Abstract Co.
 Agents For:
 First American Title Insurance Co. of Kansas
 109 E. Fourth (785) 448-2426
 Garnett, KS 66032 Fax (785) 448-6999

Bank of Greeley
 118 W. Brown • Greeley, Kansas (785) 867-2010
FDIC

KANSAS STATEWIDE ADVERTISING
 Send your ad to more than 100 Kansas newspapers. Ask us for details.
 The Anderson County Review
 785-448-3121

Printing
 Garnett Publishing, Inc. (785) 448-3121
ads@tradingpostdeals.com

Anderson County Hospital
 SAINT LUKE'S HEALTH SYSTEM
saintlukeshealthsystem.org
 421 S. Maple • Garnett, KS 66032 • (785) 448-3131

WOLKEN TIRE
 Cooper • Jetzon • Kumho
 On-the-Farm Service • Alignments
 601 South Oak • Garnett (785) 448-3212

TRULY INSURANCE
 EST 1967
 118 E. 5th, on the square, Garnett (785) 448-3841

To advertise your business here, contact Stacey at 785-448-3121.

Sandra's Quick Stop
 Sandra & Terry Zook
 24963 NE 169 Hwy Junction 59/169 • Garnett (785) 448-6602

The most reliable overnight shipping service.
FedEx
 The World On Time®
 Available at Garnett Publishing, 112 W. Sixth, Garnett

COUNTRY MART
 DELI • BAKERY • PHARMACY
 AT THE INTERSECTION OF Hwy. 31 (Park Rd.) & Hwy. 59 in Garnett
 785-448-2121

Josephine's
 421 S. Oak • Garnett
 Tues - Fri. 10-5
 Sat. 10-2
 785-448-3038

County publishes notice of delinquent property taxes

(First published in The Anderson County Review, Tuesday, August 7, 2025.)

THIS IS NOT A TAX FORECLOSURE SALE NO PUBLIC AUCTION IS HELD** Property is NOT SOLD AT PUBLIC AUCTION until three years have passed from the 1st publication of delinquent tax on a parcel. The following publication is to legally perfect a tax lien against the property for Anderson County and is required by Kansas Statute.

Notice is hereby given that so much of each tract of land described in the following list located in Anderson County, Kansas, as may be necessary for the purpose, will be on the first Tuesday in September 2025, bid off by one as County Treasurer of said County, in the name of and for Anderson County, at my office in the courthouse, in Garnett, Kansas, for the taxes and charges thereon, for the tax year 2024.

/s/ Dena M. McDaniel
Anderson County Treasurer

STATE STATUTE PROVIDES THAT ONLY THE COUNTY MAY BID; NO PRIVATE BIDS PERMITTED. EACH TRACT OR LOT IS SUBJECT TO A FEE of \$16.00 AND 014%INTEREST PER ANNUM PRORATED. Publication indicates tax payments through July 31, 2025. Any payments made after this date are not reflected in this publication."

AARON LIZER AGENCY INC 1-00202230 "\$6,976.48" Subd-NEW ORCHARD PARK ADD Blk-1 Lot-1 & 2 Sec-25 Twp-20 Rng-19

AARON LIZER ENTERPRISES LLC 1-00201330 "\$1,129.08" "BEG 2065 'W & 1510 'S OF NE SEC COR, W151', N200', E151', S200 'TO' POB Sec-25 Twp-20 Rng-19

BERTHA MAE ADAMS 1-00501090 \$146.68 %HONEY WHITCOMB Subd-KINCAID Blk-16 Lot-6-8 Sec-36 Twp-22 Rng-20

TRACY GERALD ALLEN 1-02700441 Acres-16.36 \$144.22 "BEG SE COR OF SEC, N 1329', W TO CTR OF CK, SLY AL CTR OF CK TO" "A PT 640 'W OF E LI SE4, TH S & PW E LI OF SE4, TH S & PW E LI" Sec-14 Twp-20 Rng-18

DARRYL E & GEORGIANNA ANDERSON 1-00500550 Acres-2.30 \$757.68 "BLK 0.4 TOG W/ADJ S1/2 E195 'VAC FOURTH AVE, N1/2 ADJ THIRD AVE" Subd-KINCAID RESERVE STRIP Blk-0.4 Sec-36 Twp-22 Rng-20

KIMBERLY KAY ANDERSON & 1-06101500 Acres-2.20 \$865.50 "DAVID C HEIDRICH JR BEG NW COR SE4 S360', E270', N360', W270" TO POB EX RD Sec-36 Twp-21 Rng-17

JAMES C ATZBACH 1-00100030 "\$1,050.60" "Subd-COLONY Blk-1 Lot-6, 7 & 8 Sec-06 Twp-23 Rng-19"

FRANCES R BABCOCK 1-09300220 Acres-155.60 "\$1,103.34" %KEITH BABCOCK NE4 EX RD Sec-33 Twp-22 Rng-19

FRANCES R BABCOCK 1-09300820 Acres-14.70 \$64.68 %KEITH BABCOCK E2 NW4 N MOP R/W & W ATSF & EX HWY R/W Sec-06 Twp-23 Rng-20

PAUL BAILEY 1-03502860 \$894.76 "BEG NW COR NE4 SW4, E 100', S TO" "RR, NW 100', N TO POB, LESS RD R/W Sec-29 Twp-20 Rng-20"

DALE P & MARGARET A BAKER 1-00100300 \$648.44 "Subd-COLONY Blk-18 Lot-7, 8 & 9 Sec-06 Twp-23 Rng-19"

KIRBY BARNES 1-00204460 \$13.32 BLDG #3 GOLF CART SHED Sec-19 Twp-20 Rng-20

DAVINA BARNETT 1-00217230 "\$1,859.70" Subd-GARNETT Blk- 56 Lot-11 & N2 LT 12 Sec-30 Twp-20 Rng-20

MICHAEL W & CARMEN A BARTHOLOMEW 1-00211640 "\$2,905.50" Subd-GARNETT Blk- 14 Lot-11 & 12 Sec-30 Twp-20 Rng-20

JOHN C BAUMAN 1-00214460 \$555.12 "BEG NE COR LT 2, S140', W37.3 'N40', E9'", N100', E36.6 'TO POB" Subd-GARNETT Blk- 55 Lot-LOT 2 Sec-30 Twp-20 Rng-20

TYLOR BAUSMAN 1-00501410 \$457.24 "Subd-KINCAID Blk- 14 Lot-3, 4, 5 & 6 Sec-36 Twp-22 Rng-20"

MARY BENNETT 1-00100790 \$221.54 Subd-COLONY Blk- 34 Lot-1 Sec-06 Twp-23 Rng-19

ARLENE BENTON LIVING TRUST 1-08000080 Acres-274.40 \$575.73 ALL SE4 NW4 & N2 SW4 LY S & E OF HWY & ALL E2 NE4 & NE4 SE4 & NW4 NE4 LY S & W OF HWY & SW 2 NE4 & NW4 SE4 & SE4 SE4 EX HWY R/W Sec-30 Twp-21 Rng-20

ARLENE BENTON TTEE 1-08000170 Acres-58.90 "\$2,361.25" SW4 SE4 & S2 NW4 SE4 EX RD Sec-25 Twp-21 Rng-19

KEELA & ERIC BLACK 1-00500760 \$447.47 "Subd-KINCAID Blk- 17 Lot-13, 14 & 15 Sec-36 Twp-22 Rng-20"

SETH ALAN & ANGELA D BLACK 1-00102590 "\$1,102.44" BEG 60 'W OF NW COR BLK 2 S150 'W100 'N150 'E100 'TO POB Subd-COULTERS 1ST ADD TO COLON Blk-2 Sec-07 Twp-23 Rng-19

MICHAEL S BLAUFUSS 1-06100051 Acres-78.60 \$141.56 S2 SE4 EX RD Sec-06 Twp-22 Rng-18

MICHAEL S BLAUFUSS 1-06200040 "\$1,323.92" W2 NW4 & NE4 NW4 EX RD Sec-06 Twp-22 Rng-18

MICHAEL S BLAUFUSS 1-06200050 Acres-158.70 \$499.05 SW4 EX RD Sec-06 Twp-22 Rng-18

MICHAEL S BLAUFUSS 1-07000070A Acres-3.40 "\$1,275.44" "BEG NW COR SW4 SW4, E330', S495', W330', N495 'TO POB, EX RD" Sec-12 Twp-22 Rng-17

SHARON E BLOMQUIST 1-03001800 Acres-6.30 "\$1,576.80" "BEG 75 'W NE COR S409', W896', N TO S R/W" "MOP RR, NE ALOG R/W TO N SEC LN, E TO POB Sec-36 Twp-20 Rng-19"

AMANDA BOHANNAN 1-00701090 \$743.76 "LTS 13 & 14, EX N8 'LT 14" Subd-SUPPLEMENT TO MERRILL ADD Blk-8 Sec-36 Twp-21 Rng-17

ANTHONY C BOWLIN 1-01100310A Acres-29.50 "\$6,672.60" "WILLIAM BOWLIN BEG SE COR SE4, W722', N1810', E722'," "S1810 'TO POB, EX RD Sec-21 Twp-19 Rng-21"

JUDY MARIE BRAUCKMAN 1-03502780 Acres-10.00 "\$3,118.52" E2 W2 SE4 NW4 LESS RD R/W Sec-29 Twp-20 Rng-20

ROXANNE BRECHEISEN 1-00215160 "\$1,866.30" Subd-GARNETT Blk- 69 Lot-13 & W2 LT 14 Sec-30 Twp-20 Rng-20

LONNIE R & JUDITH BREWER 1-00500190 Acres-2.05 \$420.16 N1/2 OF E195 'VAC FOURTH AVE LYG S OF BLK 5 Subd-KINCAID RESERVE STRIP Blk-05 Sec-36 Twp-22 Rng-20

JAMES O BROCE 1-01100660 Acres-2.70 "\$1,690.44" "BEG 1548.5 'S NW COR SEC 29, WRLY ALG CTR CO RD 631.4', S75" "E800', N75 'TO CTR CO RD, NWRLY 235.5 'TO POB" Sec-29 Twp-19 Rng-21

JAMES BROCE 1-02100310A Acres-3.24 "\$1,296.34" "COMM NW COR NW4, SE 836.57 'ON WEST LINE" "OF NW4 AND TRUE POB. SE 386.50, SE" "120.12", SE 282.37, SE 495 'TO WEST" "LINE OF NW4, NW 347.81 'TO POB Sec-23 Twp-19 Rng-20"

DALE A BROOKS 1-08001960 Acres-8.20 "\$1,627.84" NW4 NW4 W OF RR EX RD Sec-02 Twp-22 Rng-19

GENIA BROWN 1-00700040 Acres-1.00 \$318.62 "BEG 1363.56 'W SE COR SW4, TH N216.7'," "W216.7", S216.7', E216.7 'TO POB Sec-25 Twp-21 Rng-17"

JAMES J BROWN 1-04100420 Acres-10.10 \$927.50 W 1617 'S2 SW4 LY S OF CO RD Sec-04 Twp-20 Rng-21

THEODORE P & GENIA M BROWN 1-007000890 \$744.78 W92 'LTS 13-17 & ALL LTS 18-24 INCL Subd-SUPPLEMENT TO MERRILL ADD Blk-5 Sec-36 Twp-21 Rng-17

BROWNRIGG RANCHES LLC 1-08002370 Acres-98.20 \$800.48 S2 SE4 & SW4 LY E RR R/W EX RD Sec-03 Twp-22 Rng-19

BROWNRIGG RANCHES LLC 1-08100380 Acres-182.60 "\$2,165.04" "SE4 & BEG SE COR SW4 N1650', W 627', S1650', E TO POB EX RD" Sec-35 Twp-21 Rng-18

COLBY RAY BROWNRIGG 1-08001260 Acres-74.60 \$910.80 "S2 NE4 EX BEG 410 'W NE COR S2 NE4 E410', S470', W218', NW 500" TO POB & EX RD Sec-34 Twp-21 Rng-19

COLBY RAY BROWNRIGG 1-08001270 Acres-3.10 \$233.36 "BEG 410 'W NE COR S2 NE4 E410 'S470', W218', NW500 'TO POB EX RD" Sec-34 Twp-21 Rng-19

COLBY RAY BROWNRIGG 1-08001780 Acres-40.30 \$169.98 "SE4 NW4 & BEG NE COR, SW4 NW4, S 45', W TO TIOGA ST, NE TO N LN S" "W4 NW4, E TO POB Sec-02 Twp-22 Rng-19"

SCOT D & GARIE J BROWN-RIGG 1-08002645 Acres-8.90 "\$1,789.78" "BEG NW COR NW4, E687.3', S625', W685', N625.1 'TO POB EX RD" Sec-06 Twp-22 Rng-19

TROY L BRUBAKER 1-00216200A "\$1,137.32" "BEG AT A PT 6 '8" W OF NW COR LT 8, TH" "RUNNING E85 '4'", S130', TO S LN LT 7, TH" "W85 '4'" TO CTR VAC ALY TH N130 'TO POB" Subd-CHAPMANS ADD TO GARNETT Blk- 14 Sec-30 Twp-20 Rng-20

RICHARD L & KLOMA J BUCKLE 1-00100240 \$69.93 "CARL PAYNE Subd-COLONY Blk- 16 Lot-6, 7 & 8" Sec-06 Twp-23 Rng-19

THOMAS P BUCKLE 1-09301050 Acres-37.15 \$219.39 %RICHARD BUCKLE BEG 30 'E & 669.6 'S SW COR BLK "1, COULTER 'S 2ND ADD, S 330',

W TO RD, NE" "ALG RD TO PT W OF BEG, E TO POB & SW4 NW4 E OF RR & RD" Sec-07 Twp-23 Rng-19

DORIS BUNCH 1-08000700 "\$1,420.00" "Subd-RAILROAD ADD TO WELDA Blk-25 Lot-1, 2, & 3" Sec-35 Twp-21 Rng-19

JASON L BURGOON 1-11000620 Acres-16.80 "\$1,593.58" "BEG 304.2', N SE COR SE4, W424', N1845.8" "E424', S 1845.8 ' TO POB Sec-17 Twp-22 Rng-21"

HOPE D BURNS 1-00500820 \$518.86 %WILLIAM STARR Subd-KINCAID Blk-26 Lot-7 & 8 Sec-36 Twp-22 Rng-20

CHARLES A BURRIS 1-00300840 \$617.42 Subd-GREELEY Blk- 50 Lot-S100 'LTS 1-4 Sec-30 Twp-19 Rng-21

ROBERT CALVER 1-00217580 \$265.59 Subd-GARNETT Blk- 59 Lot-20 Sec-30 Twp-20 Rng-20

JERRY R & CRYSTAL D CAREY 1-03502210 Acres-37.90 "\$4,385.52" NW4 SW4 EX RD Sec-27 Twp-20 Rng-20

GLENDA J CARROLL 1-00700730 "\$1,087.36" Subd-HIGHBERGERS ADD TO WESTPH Blk-6&7 Sec-36 Twp-21 Rng-17

KENNETH R CARTWRIGHT 1-04100090 Acres-19.10 "\$1,236.12" "NANCY ROBINSON W2 NWFR4, EX S2 SW4 NWFR4, EX NW4 NWFR4 & EX RD" Sec-19 Twp-20 Rng-21

BYRON S & JUANITA CARTY 1-00217800 \$140.46 "Subd-GARNETT Blk-63 Lot-4,5 & 6 Sec-30 Twp-20 Rng-20"

JOSEPH W & SONJAL CASCANETT 1-00501980 \$310.22 Subd-SOUTH ADD TO KINCAID Blk- 16 Lot-16 & N2 15 Sec-01 Twp-23 Rng-20

FORREST L & VICTORIA CASS 1-047000390 Acres-25.60 \$339.08 "NW4 NW4, EX BEG SW COR, N1323 ' , E415', S606', W174', S720', W" "240' TO POB EX RD & EX BEG NE COR NW4" "NW4, S660', W330', N660', E330 'TO POB EX RD Sec-27 Twp-21 Rng-20"

DALE L CASTLEBERRY 1-00217820 \$85.38 %JEFFREY S CASTLEBERRY W2 LT 9 & E30 'LT 10 Subd-GARNETT Blk- 63 Sec-30 Twp-20 Rng-20

GARY R CAYLOR 1-04601110 Acres-76.80 \$593.20 S2 SW4 EX RD Sec-34 Twp-21 Rng-21

GARY R CAYLOR 1-11000140 Acres-138.40 "\$1,502.32" "NW4 , EX BEG 745.7 'W NE COR NW4'," "S378.3', W230.4', S 3 DEG W258', S 20" "DEG W139.6', W384.6', N 2 DEG W757.8', E723 'TO POB & EX RD" Sec-03 Twp-22 Rng-21

GARY R CAYLOR 1-11000170 Acres-35.50 \$545.28 NE4 NW4 EX RD Sec-04 Twp-22 Rng-21

GARY R CAYLOR 1-11000180 Acres-35.10 \$534.76 NW4 NW4 EX RD Sec-04 Twp-22 Rng-21

JAMES L CHAMBERS 1-02102290 Acres-4.30 \$160.00 %GENE CHAMBERS BEG 708 'W N4 COR S TO CRK W A 'LG CRK 528', N TO SEC LN, E TO B EG Sec-01 Twp-20 Rng-19"

JUSTIN D CHRISTENSEN TRUSTEE 1-04101170 Acres-76.70 \$292.78 JEAN H CHRISTENSEN TRUSTEE W2 NW4 EX RD Sec-30 Twp-20 Rng-21

HOWARD S & RUBY E CHRISTIAN 1-02700250 Acres-39.10 "\$3,359.88" N2 NE4 & N2 S2 NE4 EX BEG 355.9 'S NE COR 'NE4, W1472', S363.6', W129.1', S 8 DEG W" "221.2", S 65 DEG W674.5', W419.8 'Sec-10 Twp-20 Rng-18"

WALTER SCOTT CHURCH IV 1-04000220 Acres-40.50 "\$1,498.24" NW4 SE4 EX RD Sec-09 Twp-20 Rng-21

KATHY L CLARK 1-00211080 "\$1,171.70" Subd-GARNETT Blk-7 Lot-12 & W10 'LT11 Sec-30 Twp-20 Rng-20

KAYLEE CLARK 1-00501860 Acres-2.35 \$523.38 "BEG SE COR BLK 18, N325', W300', S325'," "E300 'TO POB, TOG W ADJN E2 VAC OSAGE ST." Subd-SOUTH ADD TO KINCAID Blk- 18 Sec-01 Twp-23 Rng-20

THOMAS J COEY 1-00500290 \$141.34 "LTS 1 THRU 12, TOG W/VAC ALY Subd-KINCAID Blk- 24" Sec-36 Twp-22 Rng-20

JEFF COLLINS 1-00217810 \$138.47 "Subd-GARNETT Blk- 63 Lot-7,8 & E2 LT 9 Sec-30 Twp-20 Rng-20"

ROBERT & ANN CONAWAY 1-00700920 \$943.48 Subd-SUPPLEMENT TO MERRILL ADD Blk-5 Lot-E75 'LTS 7-12 Sec-36 Twp-21 Rng-17

RAYMOND CORNETT 1-00208880 \$899.54 Subd-GARNETT Blk- 23 Lot-11 & 12 Sec-30 Twp-20 Rng-20

STACEY D CORWIN 1-00217830 \$622.04 "LISA D SNEDECOR LTS 11,12 & W10 'LT 10 Subd-GARNETT Blk- 63" Sec-30 Twp-20 Rng-20

NANCY A COULBOURN 1-04500330 Acres-39.20 \$164.78 %JOHN CROAN NW4 SE4 EX RD Sec-21 Twp-21 Rng-21

NANCY A COULBOURN 1-04500330A Acres-39.10 \$166.40 SW4 NE4 EX RD Sec-21 Twp-21 Rng-21

JOY R CRIST LIVING TRUST 1-05100730 Acres-78.80 \$649.22 E2 NW4 EX RD Sec-29 Twp-21 Rng-20

KYLE MCGYVER CRIST 1-05100410 Acres-1.10 "\$1,747.60" "AMBER LYNN CRIST BEG 1200 'N SW COR NW4 SE4, N31" "2.5', E TO HWY, S312.5', W TO POB EX RD Sec-18 Twp-21 Rng-20"

WILBERN L CROAN 1-04500310 Acres-79.60 \$450.80 E2 SE4 EX RD Sec-21 Twp-21 Rng-21

TREVOR CRONIN 1-00203360 \$106.74 Subd-SMITH 'S ADD TO GARNETT Blk-1 Lot-19 & W2 LT 20 Sec-25 Twp-20 Rng-19

TREVOR W CRONIN 1-00207540 "\$1,665.26" Subd-PINEWAY ADD TO GARNETT Blk-2 Lot-7 & E42.5 LT6 Sec-30 Twp-20 Rng-20

TREVOR CRONIN 1-08000720 \$64.02 "Subd-RAILROAD ADD TO WELDA Blk- 25 Lot-7, 8 & 9" Sec-35 Twp-21 Rng-19

JORGE & RHONDA CUMPLIDO 1-00501240 \$274.70 "BEG 80 'E OF NW COR BLK 1, KING AID, E 264', S 150', W 262', N 150" 'TO POB Sec-36 Twp-22 Rng-20

THOMAS J DALY 1-00214170 "\$2,516.40" "Subd-GARNETT Blk- 53 Lot-18, E30 LT 17 Sec-30 Twp-20 Rng-20"

JOHN W & ALICE DAUGHTERY 1-00501100 \$17.58 "%HONEY WHITCOMB Subd-KINCAID Blk-16 Lot-3, 4 & 5" Sec-36 Twp-22 Rng-20

BETTY JOY DAULTON 1-00200650 Acres-2.50 \$986.92 "BEG 60 'W & 310 'N OF SE SEC COR, W458'," "N180', E11', N54', E450', S235 'TO POB Sec-24 Twp-20 Rng-19"

ARTHUR DEWAIN & CAROLYN JEAN DAVIS 1-02600190 Acres-63" \$4,611.63" SEC 35 EX RD Sec-35 Twp-19 Rng-18

ARTHUR DEWAIN & CAROLYN JEAN DAVIS 1-02600220 Acres-15" \$1,020.69" SW4 EX RD Sec-36 Twp-19 Rng-18

ARTHUR DEWAIN & CAROLYN JEAN DAVIS 1-02700060 Acres-15" \$1,244.48" NE4 EX RD Sec-02 Twp-20 Rng-18

CORY DAVIS 1-00102700 "\$1,058.84" Subd-COULTERS 2ND ADD TO COLON Blk-2 Lot-3-6 Sec-07 Twp-23 Rng-19

HUGH R & BETH L DAVIS 1-09300804A Acres-5.00 "\$2,485.32" ROBERT J DAVIS N 5 AC OF SE4 NW4 E OF RW EX LY W OLD H WY EX RD Sec-06 Twp-23 Rng-19

JOHN R & HOLLY S DAVIS 1-00216580 \$107.72 Subd-CHAPMANS ADD TO GARNETT Blk- 25 Lot-3 & E2 LT 4 Sec-30 Twp-20 Rng-20

HAROLD CHARLES DENCHFIELD 1-08001310 Acres-158.70 "\$1,863.68" SW4 EX RD Sec-01 Twp-22 Rng-18

HAROLD CHARLES DENCHFIELD 1-08001320 Acres-34.41 \$860.80 "SE4 SE4, EX BEG SE COR SE4, N360', W667'," "S360', E667 'TO POB & EX RD Sec-01 Twp-22 Rng-18"

DENCHFIELD LIVING TRUST 1-08001320A Acres-114.17 \$982.70 "SE4, EX SE4 SE4 & EX POB STARTING 1351'" "W SE COR W 832', N 379', E280', SE837 ' & RD" Sec-01 Twp-22 Rng-18

HAROLD CHARLES & SHARON K DENCHFIELD 1-08001320B Acres-5. \$24.52 "POB STARTING 1351 'W OF SE COR SE4, W" "832', N 379', E280', SE 837 'Sec-01 Twp-22 Rng-18"

HAROLD CHARLES & SHARON K DENCHFIELD 1-08001330 Acres- \$2,250.14" "BEG SE COR SE4, W667', N360', E667', S360 'TO POB EX RD" Sec-01 Twp-22 Rng-18

DENNIS DENLINGER 1-00214470 \$136.50 "BEG 3.5 'E NW COR LT 2 S100 'W75', S40', W18', N140', E18.75" TO POB Subd-GARNETT Blk- 55 Sec-30 Twp-20 Rng-20

SANDRA & JOSEPH DETAR 1-00500590 \$197.81 "BEG 80 'E SE COR BLK 2, N100', E2 65', S100', W265 'TO POB" Subd-KINCAID Sec-36 Twp-22 Rng-20

JESSICA DEVOE 1-00501320 \$69.96 Subd-KINCAID Blk- 14 Lot-1 & 2 Sec-36 Twp-22 Rng-20

MATTHEW WAYNE DEVOE 1-00500940 \$361.18 Subd-KINCAID Blk- 30 Lot-5 & 6 Sec-36 Twp-22 Rng-20

THOMAS L DIETRICH 1-00101430 \$223.08 MYRNA CASTLE LT 10 COLONY & LT 2 PINEGAR 'S ADD Sec-06 Twp-23 Rng-19

WES DIETRICH 1-00101050 \$384.72 Subd-COLONY Blk-37 Lot-6-12 INCL Sec-06 Twp-23 Rng-19

DONALD DISHMAN II 1-00500130A \$342.88 LTS 5 & 6 & S2 LOT 4 Subd-

KINCAID Blk-9 Sec-36 Twp-22 Rng-20 EDWIN LEE III & JESSICA N DUNCAN 1-00218550 \$131.76 Subd-MANDОВI ADD TO GARNETT Blk-5 Lot-6-10 Sec-31 Twp-20 Rng-20

TAXES...

FROM PAGE 10

NW4, E1353', S283.8 'SW409.2', S/SW 765.6', W825', N12' 93.6 'TO POB EX RD Sec-16 Twp-20 Rng-21

JOSHUA HERMRECK 1-05100300 Acres-1.30 \$164.10 "BEG NW COR N2 SE4 E 194', S 381', W 194', N 381 'TO POB EX RD" Sec-17 Twp-21 Rng-20

VERNON L HERMRECK ETAL 1-00217890 \$514.42 "N56 'LT 1, & N56 'OF E27 'LT 2 Subd-GARNETT Blk- 64" Sec-30 Twp-20 Rng-20

VERNON L HERMRECK 1-00218000 \$96.04 S84 'LT 1 & S84 'E 27 'LT 2 Subd-GARNETT Blk- 64 Sec-30 Twp-20 Rng-20

NEAL A HIGGINBOTHAM 1-00217410 \$150.68 Subd-GARNETT Blk- 58 Lot-13-16 INCL Sec-30 Twp-20 Rng-20

IVAN G & EFFIE C HILL 1-07200010 Acres-118.60 "\$1,121.62" W2 NE4 & NE4 NE4 EX RD Sec-25 Twp-22 Rng-17

MELISSA HINER 1-00217590 \$327.64 "LTS 21,22 & W14 'LT 23 Subd-GARNETT Blk- 59" Sec-30 Twp-20 Rng-20

RONNIE L HIRT 1-02603140 Acres-118.20 "\$2,969.23" S2 S2 NW4 & N2 SW4 EX RD Sec-30 Twp-20 Rng-18

MELISSA J HOBBS 1-00100250 "\$1,154.53" %RICHARD BUCKLE Subd-COLONY Blk- 17 Lot-2-5 Sec-06 Twp-23 Rng-19

LESLEY W HOLMAN 1-08000860 \$934.36 Subd-RAILROAD ADD TO WELDA Blk- 27 Lot-12 Sec-35 Twp-21 Rng-19

RHODERICK E HOLMAN 1-08002150 Acres-1.10 \$428.87 Subd-WELDA Blk-6 Lot-4 TO 9 INCL Sec-02 Twp-22 Rng-19

GARY & JANE HONN 1-00205000 \$9.37 GOLF CART SHED #57 Sec-19 Twp-20 Rng-20

DANIEL HOUSTON 1-00201670A \$74.58 "COM AT A PT 1772 'W & 60 'N SE COR NE4,TH" "W108', N177.5', E108', S177.5 'TO POB Sec-25 Twp-20 Rng-19"

KENNETH A HUGGINS 1-00202120 "\$3,568.08" BEG 1126 'N & 40 'W OF SE COR "NE4, W82', N128', NELLY 101', S189 'TO POB EX RD" Subd-NEW ORCHARD PARK ADD Sec-25 Twp-20 Rng-19

CAROL M HUNSPERGER 1-00500670 \$17.58 "Subd-KINCAID Blk-12 Lot-13, 14, & 15 Sec-36 Twp-22 Rng-20"

CAROL M HUNSPERGER 1-00600240 \$27.38 Subd-LONE ELM Blk-7 Lot-3 & 4 Sec-05 Twp-23 Rng-20

JESSE HUNTER 1-00500910 \$16.40 "LT 1 BLK 30,TOG W/ADJ S1/2 VAC SECOND AVE." Subd-KINCAID Blk- 30 Sec-36 Twp-22 Rng-20

MARK HUNZIGER 1-00500200 \$162.60 JERRY HUNZIGER Subd-KINCAID Blk-5 Lot-1 TO 6 INCL Sec-36 Twp-22 Rng-20

DALE W & REGINE A HURLOCK 1-00210800 "\$1,137.18" Subd-GARNETT Blk- 10 Lot-1 & 2 Sec-30 Twp-20 Rng-20

ROBERT WINSTON JAMESCUPP 1-02000050 Acres-1.90 "\$1,883.64" "VICTORIA ROSE JAMESCUPP BEG NW COR NW4 E280', S325', "W280', N TO POB EX RD Sec-20 Twp-19 Rng-19"

JONATHAN R & CARRIE L JARRED 1-00300680 \$579.86 "Subd-GREELEY SUBDIVISION Blk- 28 Lot-17,18" Sec-30 Twp-19 Rng-21

JEFFS TOWING & RECOVERY LLC 1-00205970 Acres-4.50 "\$3,486.52" LT 11 & E2 ADJN VAC INDUSTRIAL ST Subd-MAGGIO ADD TO GARNETT Blk-1 Sec-29 Twp-20 Rng-20

JEFFS TOWING & RECOVERY LLC 1-00205990 Acres-5.80 "\$6,011.44" Subd-WARNER ADD TO GARNETT Blk-1 Lot-1 Sec-29 Twp-20 Rng-20

TIMOTHY R JONES 1-00207570 "\$1,221.52" MARIA C THOMPSON Subd-PINEWAY ADD TO GARNETT Blk-1 Lot-7 & E 40 'LT 6 Sec-30 Twp-20 Rng-20

CHRIS KANAWYER 1-00218190 \$544.90 WENDEL KANAWYER Subd-MELIZA ADD TO GARNETT Blk-1 Lot-1 Sec-30 Twp-20 Rng-20

STEPHANIE A KATZER 1-00302540 Acres-.80 "\$1,688.06" LTS 5 & 6 & S35 'LT 7 Subd-GREELEY Blk- 44 Sec-30 Twp-19 Rng-21

E SCOTT & DIEDRA A KEELER 1-00212250 "\$1,528.66" Subd-GARNETT Blk-29 Lot-5 & W2 LT 4 Sec-30 Twp-20 Rng-20

JOHN J & JOYCE A KEILEN 1-00210040 "\$1,857.08" "BEG 330 'N & 115 'E OF NW COR N56', W115', N50 'E TO RR SE A" LG RR TO PT E OF BEG TO POB Subd-GREELEY SUBDIVISION Blk-6 Sec-30 Twp-20 Rng-20

MAHLON & TERESA KEIM 1-02602850 Acres-80.61 "\$3,082.02" N2 SE4 EX RD Sec-27 Twp-20 Rng-18

MAHLON L KEIM 1-03100270 Acres-150.50 \$994.82 "NW4 EX BEG NECOR, W611', S372', SE278', E550', N TO POB

EX RD" Sec-08 Twp-20 Rng-19

ELIZABETH IRENE KENNARD 1-08001150 Acres-9.70 \$773.22 "BEG SECOR SW4, W880', N495', E880', S495 'TO POB EX RD" Sec-33 Twp-21 Rng-19

RICHARD ALAN & CASSANDRA DAWN KINDER 1-00212700 \$818.80 Subd-GARNETT Blk- 32 Lot-20 & E2 LT 19 Sec-30 Twp-20 Rng-20

RICHARD V KINDER 1-00216120 \$459.96 "%JASON KINDER LT 3, W2 LT 2 & E2 VAC ALY BET LTS 3 & 4" Subd-CHAPMANS ADD TO GARNETT Blk- 15 Sec-30 Twp-20 Rng-20

ADAM & SHANNON KING 1-00201670B \$445.08 "COM AT A PT 1692 'W & 60 'N SE COR NE4, TH W80', N177.5', E80'," S177.5 'TO POB EX RD Sec-25 Twp-20 Rng-19

KATHY J KING 1-00215560 \$747.86 Subd-GARNETT Blk- 73 Lot-4 & E36 'LT 5 Sec-30 Twp-20 Rng-20

STEPHEN P & CHRISTINA M KIRK 1-04000410 Acres-78.30 "\$2,630.12" N2 NW4 EX RD Sec-15 Twp-20 Rng-21

CAROL KISNER 1-08002050 \$289.08 %CARRIE HEPLER Subd-WELDA Blk-4 Lot-5 & 6 Sec-02 Twp-22 Rng-19

PAUL KISSINGER 1-08001680 \$3.25 Sec-01 Twp-22 Rng-19

JUSTIN & ROCHELLE KOHLMEIER 1-00206680 "\$1,607.38" Subd-PARKLANE ADD TO GARNETT Blk-3 Lot-16 Sec-30 Twp-20 Rng-20

BETTY KYLE 1-00212260 \$885.82 Subd-GARNETT Blk- 29 Lot-6 & 7 Sec-30 Twp-20 Rng-20

GAIL R & C J LACEY 1-10500110 Acres-79.40 "\$1,964.61" W2 SE4 EX RD Sec-26 Twp-22 Rng-19

DENNIS WAYNE LANKARD 1-08002060 \$351.52 "ELISABETH MARIA LANKARD LT 7 & W44 'LT 8, Subd-WELDA Blk-4" Sec-02 Twp-22 Rng-19

DENNIS WAYNE LANKARD 1-08002070 "\$1,024.76" "ELISABETH MARIA LANKARD E6 'LT 8 & ALL LT 9, BLK 4, WELDA" Sec-02 Twp-22 Rng-19

MYRON G & CARRIE L LAYNG 1-04700410 Acres-39.00 \$437.02 SW4 NW4 EX RD Sec-27 Twp-21 Rng-20

RILEY-WAYNE J LEE 1-00218390 \$145.88 JANE L LEE Subd-MANDОВI ADD TO GARNETT Blk-2 Lot-6 TO 9 RR Sec-31 Twp-20 Rng-20

RILEY-WAYNE J LEE 1-00218400 \$120.06 JANE L LEE Subd-MANDОВI ADD TO GARNETT Blk-2 Lot-11-13 Sec-31 Twp-20 Rng-20

SHERRY J LEE 1-00214310 "\$2,718.52" "%SHERRY SCHMITZ LTS 16,17 & E2 LT 15 Subd-GARNETT Blk-54" Sec-30 Twp-20 Rng-20

JEFFREY DAVID LEITNER ETAL 1-00219140A \$89.42 Subd-MANDОВI ADD TO GARNETT Blk-24 Lot-7-10 INCL Sec-31 Twp-20 Rng-20

TANNER SCOTT LICKTEIG 1-04000200 Acres-30.70 "\$1,405.82" "BEG NW COR E2 NE4, W1345', S970', E1345', N970 'TO POB" Sec-09 Twp-20 Rng-21

DANIEL C LILE SUPPLEMENTAL NEED TRUST 1-04000090 Acres-1 \$95.46 "SE4 EX RD LESS BEG SE COR SE4 TH N540', "W711', N115', W240', S655', E591 'TO POB Sec-03 Twp-20 Rng-21"

JERRY L & MARY J LIVELY 1-00218590 \$123.34 "%MARY BELL LTS 14,15 & E10 'LT 13 & W20 'LT 16" Subd-MANDОВI ADD TO GARNETT Blk-5 Sec-31 Twp-20 Rng-20

MARY J LIVELY 1-00218620 \$329.94 %MARY BELL LTS 11 & 12 & W20 'LT 13 Subd-MANDОВI ADD TO GARNETT Blk-5 Sec-31 Twp-20 Rng-20

AARON D & DIANE LIZER 1-02600160 Acres-99.24 "\$4,359.89" "BEG NW COR NW4, E2350', S1853.6', W2350'" "N1853.6 'TO POB, EX RD Sec-25 Twp-19 Rng-18"

AARON & DIANE LIZER 1-02600160B Acres-50.57 "\$7,996.40" "BEG 1516.4 'N SW COR SW4, E784', N190', "E150', N906', E770', N632.6', W1704', S1937 'TO POB , EX RD" Sec-25 Twp-19 Rng-18

MELISSA LOGAN 1-10500050 Acres-117.20 \$738.26 "W2 SE4 & SE4 SW4 EX BEG SWCOR SE4, N429'" "E526', S429', W526 'TO POB EX RD Sec-25 Twp-22 Rng-19"

MELISSA LOGAN 1-10500060 Acres-77.30 "\$1,126.78" E2 SE4 EX RD Sec-25 Twp-22 Rng-19

LOHRENGEL FAMILY REVOCABLE LAND TRUST 1-02102090 Acres-4 \$533.46 "N2 N2 NE4, EX RD Sec-30 Twp-19 Rng-19"

KEVIN T & STEPHANIE J LOVING 1-00100970 \$56.68 ITALY LOVING %ITALY LOVING Subd-COLONY Blk- 35 Lot-11 & 12 Sec-06 Twp-23 Rng-17

STEPHANIE & KEVIN LOVING 1-00100960 \$616.40 ITALY C LOVING %ITALY LOVING Subd-COLONY Blk- 35 Lot-10 Sec-06 Twp-23 Rng-19

CRAIG ALAN LUEDKE 1-09300070 Acres-39.00 \$224.86 NW4 NW4 EX RD Sec-27 Twp-22 Rng-19

CRAIG ALAN LUEDKE 1-09300960

Acres-81.20 \$935.72 E2 NE4 Sec-07 Twp-23 Rng-19

ALFONSO LUNA 1-12001600 Acres-2.90 \$257.96 "%JESSIE J HAYNES BEG SECOR NE4 SE4, N198', W770', S198'," E TO POB EX RD Sec-13 Twp-23 Rng-20

SIRENA LUST 1-08002490B "\$1,716.81" LEASE LAND CARD Sec-09 Twp-22 Rng-19

ANGEL LYNCH-VANDERPOOL 1-02605290 "\$2,052.78" Subd-HARRIS Blk- 15 Lot-1 TO 3 Sec-08 Twp-20 Rng-18

ANGEL LYNCH-VANDERPOOL 1-02605330 \$93.04 Subd-HARRIS Blk- 15 Lot-10 TO 12 INCL Sec-08 Twp-20 Rng-18

ROGER G & DEBERA L MACE 1-00206100 "\$1,162.74" "BEG NE COR LT 5 E150', S200', W150', N200',TO POB" Subd-E S NICHOLS SUBDIVISION Sec-29 Twp-20 Rng-20

AMY S MACKLIN 1-00217361 \$521.50 %AMY ROWLANDS Subd-GARNETT Blk-57 Lot-16 & E10 'LT15 Sec-30 Twp-20 Rng-20

CHANCE MACKLIN 1-05100380 Acres-1.60 \$941.58 "SETH MACKLIN BEG SW COR N2 SE4 N400', E TO W" "HWY R/W, S400', W TO POB Sec-18 Twp-21 Rng-20"

EDWARD A MANWILLER 1-00600480 \$70.40 "%REBECCA RENDELL Subd-LONE ELM Blk-10 Lot-16,17, & 18" Sec-06 Twp-23 Rng-20

MARTIN OIL PROPERTIES 1-03501680A \$197.50 LEASE LAND CARD Sec-22 Twp-20 Rng-20

DANIEL W & DIANE E MARTIN 1-04700380 Acres-77.80 "\$3,511.39" E2 NW4 EX RD Sec-27 Twp-21 Rng-20

LEE MARTIN 1-00500840 \$57.90 Subd-KINCAID Blk- 26 Lot-3 & 4 Sec-36 Twp-22 Rng-20

ARCHIE F & SAMANTHA MASON 1-00203300 "\$1,153.06" "Subd-SMITH 'S ADD TO GARNETT Blk-1 Lot-N2 LTS 11,12" Sec-25 Twp-20 Rng-19

ARCHIE JR & SAMANTHA MASON 1-00211070 "\$1,560.56" Subd-GARNETT Blk-8 Lot-1 & 2 Sec-30 Twp-20 Rng-20

ARCHIE JR & SAMANTHA MASON 1-00215850 "\$1,177.78" Subd-CHAPMANS ADD TO GARNETT Blk-8 Lot-10 & W12 'LT 9 Sec-30 Twp-20 Rng-20

THOMAS W & ANGELA D MCCARTY 1-06100070A Acres-3.82 \$623.27 "BEG 419.3 'S NE COR SW4, S491.6'," "W325.3', N252.9', W63', N242', E390.8 'TO POB, EX RD" Sec-04 Twp-21 Rng-18

TIMOTHY K & JERRICA MCCARTY 1-00206950 "\$2,003.62" "LTS 1,2 & S3/4 LT 3 Subd-PARKVIEW ADD TO GARNETT Blk-9" Sec-30 Twp-20 Rng-20

MICHAEL D MCCULLOUGH 1-00502110 Acres-18.60 \$402.06 "LTS 1 THRU 16 BLK 19,TOG W/VAC ALY,LTS 1 THRU 16 BLK 20,TOG" "W/VAC ALY,ALL BLK 21,BEG SE COR BLK 22, W150', N705', E150'," Subd-SOUTH ADD TO KINCAID Sec-01 Twp-23 Rng-20

THOMAS W MCCULLOUGH 1-00217620 Acres-1.00 "\$1,678.48" Subd-GARNETT Blk-60 Lot-9-16 INCL Sec-30 Twp-20 Rng-20

RANDALL D MCDANIEL 1-08001090 Acres-39.90 \$177.14 W2 E2 NE4 EX RD Sec-33 Twp-21 Rng-19

RANDALL D MCDANIEL 1-08001130 Acres-2.70 \$36.18 "BEG 571 'S NE COR SW4 S250', W500', N250', E500', TO POB EX RD" Sec-33 Twp-21 Rng-19

BRANT & DANELLE MCGHEE 1-00100890 \$143.39 Subd-COLONY Blk- 35 Lot-W2 LT 3 Sec-06 Twp-23 Rng-19

BRANT T & DANELLE N MCGHEE 1-09301470 Acres-58.10 \$237.29 "E2 SE4, EX N2 NE4 SE4 & RD Sec-14 Twp-23 Rng-18"

BRANT T & DANELLE N MCGHEE 1-09301470A Acres-20.00 "\$3,043.15" "N2 NE4 SE4, EX RD Sec-14 Twp-23 Rng-18"

KENDALL D MCGHEE & BRADEN C MCGHEE 1-07200030A Acres-7" \$1,930.10" "SW COR SW4 THENCE NE 1317', NE 314.02'," "SW 854.18', SW 483.10', SE 196.75 'TO POB" Sec-25 Twp-22 Rng-17

PERRY MCGHEE JR 1-00700610 \$34.62 %ESTHER LUDOLPH BEG ON E LN DIVISION ST 294 'S OF S LN "RR, E100', S45', W100', N45 'TO POB Sec-36 Twp-21 Rng-17"

RONALD C MCGHEE 1-00101481 \$28.26 Subd-COLONY Blk- 50 Lot-E25 'LT 8 Sec-06 Twp-23 Rng-19

JUDY KAY MCGINNIS 1-02601420 Acres-159.31 \$328.01 NW4 EX RD Sec-14 Twp-20 Rng-17

JUDY KAY MCGINNIS 1-06101270 Acres-39.52 \$226.50 SE4 SW4 EX RD Sec-24 Twp-21 Rng-17

LELAND R MCGRAW 1-08000550 \$360.90 "Subd-RAILROAD ADD TO WELDA Blk- 21 Lot-3, 4, & 5" Sec-35 Twp-21 Rng-19

BRAD MCGREGOR 1-08002090 \$287.66 "LT 1 & E2 LT 2, BLK 5, WELDA Subd-WELDA Sec-02 Twp-22 Rng-19"

BRAD MCGREGOR 1-08002100 \$581.06 W2 LT 2 & ALL LTS 3 THRU 5 Subd-WELDA Blk-5 Sec-02 Twp-22 Rng-19

GREGG & LYNETTE MCHENRY 1-00217070 \$96.70 Subd-GARNETT Blk- 45 Lot-9 Sec-30 Twp-20 Rng-20

NATHAN H MCKINNEY 1-12001380 Acres-38.30 "\$1,341.52" LACEY SIGG NE4 NE4 EX RD Sec-11 Twp-23 Rng-20

JULIE MCNALL 1-00205030 \$9.37 GOLF CART SHED #60 Sec-19 Twp-20 Rng-20

JULIE MCNALL 1-00205040 \$9.37 GOLF CART SHED #61 Sec-19 Twp-20 Rng-20

LELAND G MCNEILL 1-00208730 \$918.62 Subd-GARNETT Blk- 25 Lot-12 & W30 'LT11 Sec-30 Twp-20 Rng-20

STEPHANIE L MCNEILL 1-00208910 \$255.40 MITCHAEAL MALONE Subd-GARNETT Blk- 23 Lot-18 Sec-30 Twp-20 Rng-20

JIMMY C & PAMELA MCSWANE 1-00212440 \$226.22 MITCHELL M MCSWANE %PAMELA MCSWANE Subd-GARNETT Blk- 30 Lot-N62 'LTS 10&11 Sec-30 Twp-20 Rng-20

CRAIG J MERSMAN 1-02100870 Acres-1.80 "\$1,458.24" "BEG SW COR NE4, N 382.31', E231 S382.31', W231 'TO POB" Sec-29 Twp-19 Rng-20

JUSTIN & CRYSTAL METCALFE 1-00214520 "\$2,363.26" Subd-GARNETT Blk- 55 Lot-6 Sec-30 Twp-20 Rng-20

JUSTIN & CRYSTAL METCALFE 1-00200260 \$184.36 Subd-HAYDENS LAKEVIEW EST ADD Lot-11 Sec-24 Twp-20 Rng-19

JUSTIN & CRYSTAL METCALFE 1-00203270A \$873.54 Subd-SMITH 'S ADD TO GARNETT Blk-1 Lot-8 & E2 LT 9 Sec-25 Twp-20 Rng-19

JUSTIN & CRYSTAL METCALFE 1-00205810 \$321.14 "BEG 1122 'E & 40 'N OF SW COR SE4, N148', W132', S148', E132'" TO POB Sec-19 Twp-20 Rng-20

JUSTIN & CRYSTAL METCALFE 1-00206520 Acres-3.90 \$260.68 N264 'W2 NW4 SE4 S RR & EX RR & HWY R/W Subd-BARNES ADDITION Sec-29 Twp-20 Rng-20

JUSTIN & CRYSTAL METCALFE 1-00208590 \$259.02 Subd-GARNETT Blk- 16 Lot-15 & 16 Sec-30 Twp-20 Rng-20

JUSTIN & CRYSTAL METCALFE 1-00210070 "\$1,162.90" "BEG 70 'N NW COR ROACH ADD, N100', E200', S100', W200 'TO POB" Sec-30 Twp-20 Rng-20

JUSTIN & CRYSTAL METCALFE 1-00210810 \$353.92 Sec-30 Twp-20 Rng-20

JUSTIN & CRYSTAL METCALFE 1-00210960 "\$1,138.48" Subd-CENTINNIAL ADD TO GARNETT Blk-8 Lot-22 Sec-30 Twp-20 Rng-20

JUSTIN & CRYSTAL METCALFE 1-00212750 "\$1,085.02" Subd-GARNETT Blk- 33 Lot-5 & W2 LT 4 Sec-30 Twp-20 Rng-20

JUSTIN & CRYSTAL METCALFE 1-00213890 "\$1,264.86" Subd-GARNETT Blk- 51 Lot-7 & W2 LT 6 Sec-30 Twp-20 Rng-20

JUSTIN & CRYSTAL METCALFE 1-00213960 "\$2,841.52" Subd-GARNETT Blk- 52 Lot-5 & W30 'LT 4 Sec-30 Twp-20 Rng-20

JUSTIN & CRYSTAL METCALFE 1-00215000 \$169.30 "BEG 10 'E SW COR LT 14 N140 'E40 S48', E4.5, S55', SW10', S29', W40'" TO POB Subd-GARNETT Blk- 68 Sec-30 Twp-20 Rng-20

TAXES...

FROM PAGE 11

Blk- 43 Lot-S2 LT 1 Sec-30 Twp-19 Rng-21

DANNY W RHODES 1-06100320 Acres-4.00 \$30.92 "BEG 544.5 'W NECOR NW4, W910 'TO CRK, ELY ALG CRK TO POB" Sec-07 Twp-21 Rng-18

ANASTACIO RIOS 1-04601360A Acres-80.50 \$353.56 S2 SE4 EX RD Sec-02 Twp-21 Rng-20

JEFFREY S & LISA L ROBERTS 1-00101770 "\$1,339.40" Subd-COLONY Blk- 63 Lot-S96 'LTS 4,5,6 Sec-06 Twp-23 Rng-19"

JEFFREY B ROBERTS 1-00213520 "\$1,726.84" Subd-GARNETT Blk- 48 Lot-6 Sec-30 Twp-20 Rng-20

JOYCE ANN ROBERTS 1-04000500 Acres-38.60 \$176.26 THERESA SMITH SE4 SW4 EX RD Sec-16 Twp-20 Rng-21

JOYCE ANN ROBERTS 1-04101120 Acres-28.50 \$121.89 "THERESA SMITH SW4 SW4 EX BEG NW COR E 660," "S 660', W 660', N 660' TO POB EX RD. Sec-16 Twp-20 Rng-21"

LEE ROBERTS 1-00203880 \$118.08 "Subd-BRONSTON HEIGHTS Blk-4 Lot-5,6 & 7 Sec-25 Twp-20 Rng-19"

LEE ROBERTS 1-00203891 \$89.42 "Subd-BRONSTON HEIGHTS Blk-4 Lot-8,9 & E5 'LT10" Sec-25 Twp-20 Rng-19

NATHANIEL ROBINSON 1-00215530 \$830.06 JESUS ROBINSON Subd-CHAPMANS ADD TO GARNETT Blk-4 Lot-1 & E24 'LT 2 Sec-30 Twp-20 Rng-20

VENA L ROMIG 1-00208430 \$47.94 "Subd-GARNETT Blk- 17 Lot-N2 LTS 11,12 Sec-30 Twp-20 Rng-20"

DEVON ROSEBAUGH 1-02605220 \$61.86 Subd-HARRIS Blk- 14 Lot-3 & 4 Sec-08 Twp-20 Rng-18

DEVON ROSEBAUGH 1-02605230 \$53.12 "Subd-HARRIS Blk- 14 Lot-5,6 Sec-08 Twp-20 Rng-18"

DEVON ROSEBAUGH 1-02605260 \$258.64 N2 LTS 7 & 8 & ALL LTS 9 THRU 14 Subd-HARRIS Blk- 14 Sec-08 Twp-20 Rng-18

RUSSELL L & ELEANOR ROSS 1-00600200 \$5.01 %CAROL M HUNSPERGER Subd-LONE ELM Blk-7 Lot-1 & 2 Sec-05 Twp-23 Rng-20

AMY S ROWLANDS 1-00217362 \$80.76 "BEG SW COR LT 17, N77.13', E24.88'," "S42.53', W10', S10', E10', S24.58 'TO S' 'LN, W ON S LN25.30 'TO POB Subd-GARNETT Blk- 57" Sec-30 Twp-20 Rng-20

JUAN SANCHEZ JR 1-00101440 \$462.32 Subd-COLONY Blk- 50 Lot-1 Sec-06 Twp-23 Rng-19

GENE D SAUDER REVOCABLE LIVING TRUST 1-07201050 Acres-"\$2,170.70" %SPENCER WEST NW4 EX RD Sec-18 Twp-23 Rng-18

GENE D SAUDER REVOCABLE LIVING TRUST 1-07201520 Acres-"\$3,259.82" %SPENCER WEST NW4 & W2 NE4, EX RD Sec-14 Twp-23 Rng-17"

RICHARD E & DIXIE L SCOBEE 1-08000360 \$310.12 %JILL OCHWERI Subd-RAILROAD ADD TO WELDA Blk-12 Lot-3 & 4 Sec-35 Twp-21 Rng-19

ERIC W & MELISSA SEABOLT 1-09300330 Acres-40.30 \$173.04 SW4 NE4 EX RD Sec-29 Twp-22 Rng-19

ERIC W & MELISSA SEABOLT 1-09400090 Acres-40.50 \$366.54 "SW4/ NW4, EX RD Sec-26 Twp-22 Rng-18"

ERIC W & MELISSA SEABOLT 1-09400090A Acres-37.60 "\$1,314.26" "NW4 NW4, EX RD Sec-26 Twp-22 Rng-18"

ERIC W & MELISSA SEABOLT 1-09400210 Acres-40.70 \$172.62 NW4 NE4 EX RD Sec-29 Twp-22 Rng-19

ERIC W & MELISSA SEABOLT 1-10200020 Acres-156.60 "\$2,257.30" NW4 EX RD Sec-23 Twp-22 Rng-19

ERIC W & MELISSA SEABOLT 1-10200030 Acres-39.80 "\$2,300.70" "SE4 SW4, EX RD Sec-23 Twp-22 Rng-19"

ERIC W & MELISSA SEABOLT 1-10200110A Acres-9.70 "\$2,485.02"

%KENNETH EW & ALEXIS KAYLEE SEABOLT "BEG NW COR NE4, E660', S660', W660', N660 'TO POB, EX RD" Sec-26 Twp-22 Rng-19

GORDON SETTLEMAYER 1-07201390 Acres-1.00 \$150.06 %VERNON SETTLEMAYER BEG NE COR SE4 W208.7'"S208.7' , E208.7', N TO POB EX RD Sec-11 Twp-23 Rng-17"

VERNON & RUTH SETTLEMAYER 1-07201430A Acres-72.07 \$916.84 "S2 NW4 EX BEG SW COR NW4, NW 708.46'," "SE 389.78', SE 680.56'; SW 432.82 'TO POB, & EX RD" Sec-12 Twp-23 Rng-17

SHAMROCK VALLEY VENTURES LLC 1-02605090 "\$1,033.58" Subd-HARRIS Blk-6 Sec-08 Twp-20 Rng-18

JOHN SHAUGHNESSY 1-06100240 Acres-3.40 \$68.94 JOSEPH A VOGEL %ROY BOUSE "BEG 478.5 'E SW COR SEC E990', N264 'TO' "OLD RD BED, SWLY ALG OLD RD BED TO POB Sec-06 Twp-21 Rng-18"

JOHN SHAUGHNESSY 1-06100330 Acres-2.60 \$23.26 JOSEPH A VOGEL %ROY BOUSE "BEG 495 'E NW COR, S TO CRK, NE ALG CRK TO SEC LN, W TO POB" Sec-07 Twp-21 Rng-18

KELLEY SHEFFIELD 1-00208970 \$324.16 Subd-GARNETT Blk- 22 Lot-1 & E10 'LT 2 Sec-30 Twp-20 Rng-20

VIRGINIA SHEPARD 1-00212110 \$819.66 GARY SHEPARD & VIRGINA BO Subd-GARNETT Blk- 28 Lot-10 & W14 'LT 9 Sec-30 Twp-20 Rng-20

REGAN SHERMAN 1-08000750 \$13.22 Subd-RAILROAD ADD TO WELDA Blk- 26 Lot-1 & 2 EX N50 'Sec-35 Twp-21 Rng-19

REGAN S. SHERMAN 1-08100070A Acres-79.90 \$899.50 "E2 NW4, EX RD Sec-29 Twp-21 Rng-19"

WESLEY W & LISA D SHERWOOD 1-07200530A Acres-5.90 \$919.76 "BEG 449.6 'E & 60 'N SW COR SW4," "N419.3', E634.4', S400.6', W635.7 'TO POB." Sec-31 Twp-22 Rng-18

STACY T SILLS 1-03500860 Acres-6.60 "\$1,733.02" SHELLY R SILLS NW4 NW4 SW4 LY E OF SPIRIT TRAIL. Sec-07 Twp-20 Rng-20

JAMES H & ANNA M SKAGGS 1-12000590 Acres-10.40 "\$2,004.72" "BEG NECOR NE4, W450', S968', E450', N968', TO POB EX RD" Sec-03 Twp-23 Rng-21

DONALD & LINDA L SMITH 1-07201410 Acres-159.10 "\$1,915.22" NE4 EX RD Sec-12 Twp-23 Rng-17

DONALD D & LINDA L SMITH 1-07201450 Acres-157.90 "\$1,778.92" SW4 EX RD Sec-12 Twp-23 Rng-17

LINDA L & DONALD SMITH 1-07201470 Acres-157.80 "\$1,252.08" %DONALD SMITH NE4, EX RD Sec-13 Twp-23 Rng-17"

DONNA A SMITH ETAL 1-00701110 \$459.60 Subd-SUPPLEMENT TO MERRILL ADD Blk-8 Lot-5 TO 12 INCL Sec-36 Twp-21 Rng-17

PHILIP W SMITH 1-00600360 \$37.12 "BEG 60 'W NW COR BLK 10, LONE ELM, W140', N60', E140', S60 'TO' POB Sec-06 Twp-23 Rng-20

PHILIP W SMITH 1-00600380 \$124.76 "BEG 60 'W OF NW COR BLK 10, S50', W140', N50', E140 'TO POB" Sec-06 Twp-23 Rng-20

PHILIP W SMITH 1-00600390 Acres-.30 \$383.28 "BEG 60 'W & 150 'N OF SW COR BLK 10, W150', N100', E150', S100 'TO' POB Sec-06 Twp-23 Rng-20

THOMAS A & REGAN S SMITH 1-08002170 \$313.36 "Subd-WELDA Blk-7 Lot-10,11 & 12 Sec-02 Twp-22 Rng-19"

TERRY LYNN SNOVER 1-00211930 "\$1,433.76" Subd-GARNETT Blk- 26 Lot-15 & E2 LT 14 Sec-30 Twp-20 Rng-20

FRANK D SOBBA 1-02100030 Acres-25.67 \$318.50 NW4 W OF RR EX BEG 58 'E SW COR 'NW4, E780', N206', W781', S206 'TO POB & EX' "COM SW COR NW4, N1157.6', E TO E R/W LN" "HWY 59 TO POB, N1339.5', SWLY ALG [CONT] Sec-19 Twp-19 Rng-20"

BENJAMIN & SYDNEY SPENCER LAND LLC 1-06000780 Acres-39.0

\$212.75 NW4 NW4 EX RD Sec-14 Twp-21 Rng-18

BENJAMIN & SYDNEY SPENCER LAND LLC 1-07200110 Acres-80.3 \$480.58 W2 NE4 EX RD Sec-35 Twp-22 Rng-17

BENJAMIN & SYDNEY SPENCER LAND LLC 1-07200120 Acres-116. \$124.00 E2 NW4 & SW4 NW4 EX RD Sec-35 Twp-22 Rng-17

BENJAMIN & SYDNEY SPENCER LAND LLC 1-07200120A Acres-40. \$312.19 NW4 NW4 EX RD Sec-35 Twp-22 Rng-17

BENJAMIN & SYDNEY SPENCER LAND LLC 1-09200330 Acres-152. \$677.21 NE4 E N 445.5 'OF E 594 ' & EX RD & EX HWY R/W Sec-02 Twp-23 Rng-18

BENJAMIN & SYDNEY SPENCER LAND LLC 1-09200340 Acres-189. \$776.73 NW4 & NE4 SW4 EX RD & EX HWY R/W Sec-02 Twp-23 Rng-18

DOUGLAS W SPRAGUE 1-10501770 Acres-5.00 "\$2,123.42" "BEG 58 'E SW COR SE4, N 408', W 577'," "S408', E 577', S 408', E 577 'TO POB & EX RD" Sec-11 Twp-23 Rng-19

JUSTIN D & AUSTIN D SPURRIER 1-00213480 "\$2,382.18" "BEG NE COR LT 1, S90', W52 'N90 E52 'TO POB" Subd-GARNETT Blk- 47 Sec-30 Twp-20 Rng-20

JUSTIN D & AUSTIN D SPURRIER 1-00213490 \$105.58 W28 'LT 2 & E30 'LT 3 Subd-GARNETT Blk- 48 Sec-30 Twp-20 Rng-20

TIMOTHY LEON STARR 1-00500770 "\$1,131.10" Subd-KINCAID Blk- 17 Lot-9 TO 12 INCL Sec-36 Twp-22 Rng-20

SCOTTY & KRISTI D STEPHENS 1-10400060 Acres-38.90 \$938.11 SE4 SE4 EX RD Sec-03 Twp-23 Rng-20

LAURA STEVENS 1-00700910 \$773.38 Subd-SUPPLEMENT TO MERRILL ADD Blk-5 Lot-W67 'LTS 7-12 Sec-36 Twp-21 Rng-17

MARY ANN STEWART ETAL 1-02600940 \$56.50 Subd-MINERAL POINT Blk-2 Lot-1 TO 10 INCL Sec-36 Twp-19 Rng-17

MARY ANN STEWART ETAL 1-02600950 Acres-.70 \$56.50 Subd-MINERAL POINT Blk-2 Lot-11 TO 15 INCL Sec-36 Twp-19 Rng-17

STINNETT TIMBERS LLC 1-12000510A Acres-59.32 "\$2,580.30" W2 SEC LY E RR R/W EX RD & EX BEG ON E "R/W RR 409 'N & 364.1 'E SW COR SW4," "S61 DEG. E266', N28 DEG E259', S61 DEG' "E121.6', N33 DEG E602.46', N61 DEG W419.1 'Sec-31 Twp-22 Rng-21"

RANDALL S & VICKI L STINNETT 1-00501350 "\$10,257.24" "Subd-KINCAID Blk- 14 Lot-18, 19 & 20 Sec-36 Twp-22 Rng-20"

RANDALL & VICKI STINNETT 1-00501380 \$155.10 N16 'OF W70 'OF LT 12 Subd-KINCAID Blk- 14 Sec-36 Twp-22 Rng-20

RANDALL S & VICKI L STINNETT 1-00501390 \$19.76 LTS 9-12 EX N16 'OF W70 'Subd-KINCAID Blk- 14 Sec-36 Twp-22 Rng-20

RANDALL S & VICKI L STINNETT 1-00501510 \$18.58 "LOTS 7 & 8, & 4" "OFF S SIDE LOT 6, BEG" AT FRONT OF LOT 6 & EXTENDING W 40 'Subd-KINCAID Blk- 15 Sec-36 Twp-22 Rng-20

RANDALL S & VICKI L STINNETT 1-00501810 \$23.32 "Subd-SOUTH ADD TO KINCAID Blk- 17 Lot-10, 11 & 12" Sec-01 Twp-23 Rng-20

RANDALL & VICKI STINNETT 1-00501820 \$55.76 "Subd-SOUTH ADD TO KINCAID Blk- 17 Lot-7,8,9" Sec-01 Twp-23 Rng-20

RANDALL & VICKI STINNETT 1-00501990 \$20.94 Subd-SOUTH ADD TO KINCAID Blk- 16 Lot-14 & S2 LT 15 Sec-01 Twp-23 Rng-20

RANDALL & VICKI STINNETT 1-00502000 \$20.94 Subd-SOUTH ADD TO KINCAID Blk- 16 Lot-12 & 13 Sec-01 Twp-23 Rng-20

RANDALL S & VICKI L STINNETT 1-12000840A Acres-9.80 "\$1,601.22" "N660 'W2 NW4, EX PT LY N & W OF RD Sec-06 Twp-23 Rng-21"

JOAN E STONEKING 1-00500370 "\$1,559.18" LTS 1 THRU 6 BLK 31 & LOTS 3-6 INCL BLK "32,TOG W/ ADJ VAC THIRD AVE & ADJ N2 VAC SECOND AVE." Subd-KINCAID Sec-36 Twp-22 Rng-20

ERIC E SWANSON 1-00501470 \$303.28 "Subd-KINCAID Blk- 15 Lot-20, N45 '19 Sec-36 Twp-22 Rng-20"

LINDA L SWANSON 1-00501360 \$19.36 %ERIC SWANSON Subd-

KINCAID Blk-14 Lot-16,17 & N5 '15" Sec-36 Twp-22 Rng-20

PAUL SWANSON 1-00501370 \$14.04 %ERIC SWANSON LTS 13 & 14 & S 20 'LT 15 Subd-KINCAID Blk- 14 Sec-36 Twp-22 Rng-20

BRYAN M D & STEFANIE L TATE 1-00215300 "\$1,390.18" Subd-GARNETT Blk-71 Lot-5 Sec-30 Twp-20 Rng-20

DARROLD TAWNEY 1-02100891 Acres-38.01 \$87.76 "BEG NW COR NW4, E2670 'TO NE COR, S672', W2555 'TO CTR OF' "CO RD, NW ALG RD 588 'TO CUR, N97 'TO POB EX RD" Sec-29 Twp-19 Rng-20

DARROLD D TAWNEY 1-02100892 Acres-39.00 \$132.86 "BEG 672 'S NW4 NECOR, S674', W343'," "S1280', W778', N1121 'TO POB EX RD Sec-29 Twp-19 Rng-20"

MARK JUDE & SARAH BETH TAYLOR 1-12000710 Acres-80.00 "\$2,172.50" E2 SW4 Sec-09 Twp-23 Rng-21

ERIC THOMAS 1-00215080 \$441.90 S2 LTS 1 & 2 & E18 'S2 LT 3 Subd-GARNETT Blk- 68 Sec-20 Twp-20 Rng-20

JERRY W THOMPSON 1-00500980 \$541.40 Subd-KINCAID Blk- 27 Lot-7 TO 10 INCL Sec-36 Twp-22 Rng-20

XZAVIOR R THOMPSON 1-00208250 \$750.18 Subd-GARNETT Blk- 18 Lot-4 & E2 LT 5 Sec-30 Twp-20 Rng-20

LARRY L & TERESA L THORNHILL 1-02100031 Acres-17.40 "\$2,310.34" "COM SW COR NW4, N1157.6', E TO E R/W LN" "HWY 59 TO POB, N1339.5 'SWLY ALG' "PRAIRIE SPIRIT TRAIL 1720.1', W1106.5 'TO POB" Sec-19 Twp-19 Rng-20

LELA P TIMMONS 1-05100640 Acres-5.00 \$116.98 "%ROBERT L TIMMONS BEG NE COR NE4 SW4, S330', W660', N330'," "E660 'TO POB EX RD Sec-20 Twp-21 Rng-20

ROBERT TIMMONS 1-05100650 \$3.63 %YVONNE E RYAN Sec-20 Twp-21 Rng-20

DAVID R & CINDY K TINSLEY 1-00101060 \$551.58 LT 3 & W 40 'LT 2 Subd-COLONY Blk- 39 Sec-06 Twp-23 Rng-19

CINDY KAY & DAVID RAY TINSLEY 1-00102120 "\$2,052.48" "Subd-PINEGAR 'S 2ND ADD PLAT 3 Blk-6 Lot-4,5&6" Sec-06 Twp-23 Rng-19

TROYERS LLC 1-00213070 "\$7,079.14" "BEG SE COR LT 24,TH W30', N140', E30', S140 'TO POB" Subd-GARNETT Blk-34 Sec-30 Twp-20 Rng-20

JOE TRUJILLO 1-00207900 \$117.76 Subd-GARNETT Blk-2 Lot-11 & 12 Sec-30 Twp-20 Rng-20

JONI TUCKER 1-00213780 "\$1,963.16" Subd-GARNETT Blk- 50 Lot-3 & W2 LT 2 Sec-30 Twp-20 Rng-20

TURNER FAMILY TRUST-SUBTRUST B 1-02600020A Acres-72.60 \$308.04 "SW4 SE4, SE4 SW4, EX BEG SE COR W2," "N1279.5', S 27 DEG E553.7', S14 DEG" "E797.5', W402.2 'TO POB & EX RD Sec-19 Twp-19 Rng-18"

TURNER FAMILY TRUST SUBTRUST B 1-02600020 Acres-86.40 "\$2,743.56" %TODD L & LORI L TURNER TTEES "W2 SW4 & BEG SE COR W2," "N1279.5', S 27" DEG E553.7', S 14 DEG E797.5', W402.2 'TO POB & EX RD" Sec-19 Twp-19 Rng-18

CRAIG T & CYNTHIA A UHLIG 1-02100030B Acres-9.11 \$9.80 "COMM SW COR NW4, ALG W LN 1157.61'," "E88.19 'TO POB ON E ROW 59 HWY, TH E" "1106.54 'TO PST ROW, SE 40 DEG, AL ROW," "TH 407.21 'W, TH W 1390.80 'TO E ROW 59 Sec-19 Twp-19 Rng-20"

CHARLES VALENTINE 1-00700232 "\$1,066.30" Subd-WESTPHALIA (corrected) Blk-1 Lot-12 & N2 LT 11 Sec-36 Twp-21 Rng-17

VANHORN FARMS LLC 1-02600430 Acres-78.48 "\$1,151.90" E2 SE4 EX RD Sec-34 Twp-19 Rng-18

VANHORN FARMS LLC 1-02600851 Acres-91.00 "\$1,285.94" E2 NW4 & BEG SE COR NW4 NW4 W139'N264'; NWLY 343', N911 'TO N LINE E370', S1300 'TO POB" Sec-36 Twp-19 Rng-17

VANHORN FARMS LLC 1-02700250A Acres-80.90 "\$1,282.28" "BEG 355.9 'S NE COR NE4, W1472'," "S363.6', W129.1', S 8DEG W221.2', S 65DEG" "W674.5', W419.8', S757.1', E2664.4', , N1626.3 'TO POB EX RD" Sec-10 Twp-20 Rng-18

VANHORN FARMS LLC 1-05000240 Acres-139.20 "\$2,185.00" SW4 EX BEG 775 'N SW COR N329.6' . "E427.5', S 50

DEG E 279.7', N88 DEG" "E 167', N 47 DEG E 257.5, E164', S435.5'" "S 83 DEG W 95', S 28DEG W135.6' Sec-06 Twp-21 Rng-19"

VANHORN FARMS LLC 1-06000670 Acres-40.60 \$650.00 NW4 NE4 EX RD Sec-13 Twp-21 Rng-18

VANHORN FARMS LLC 1-06100300 Acres-78.00 \$890.40 E2 NE4 EX RD Sec-07 Twp-21 Rng-18

VANHORN FARMS LLC 1-06100380 Acres-158.10 "\$1,754.96" NW4 EX RD Sec-08 Twp-21 Rng-18

VANHORN FARMS LLC 1-08100320 Acres-80.00 "\$1,099.80" SW4 SE4 & SE4 SW4 EX RD Sec-26 Twp-21 Rng-18

MICHAEL A & TERRI VAUGHN 1-02101130 Acres-1.50 \$966.62 "BEG 348.48 'N SW COR SE4 NE4, N 303.28'" "E235.62', S303.28', W TO POB Sec-29 Twp-19 Rng-20"

KEELA A VELVICK 1-00212430 \$699.12 %ROLENA KENNARD Subd-GARNETT Blk- 30 Lot-S50 'LT 7 Sec-30 Twp-20 Rng-20

TRAVIS VERMILLION 1-10500610A Acres-5.49 \$13.65 "BEG SE COR SE4, N 666.50 'TO POB, NW 444'" ".11', NE 302', NE 375.27', SE 353.91', W 662.36 'TO POB, EX RD" Sec-22 Twp-22 Rng-20

TRAVIS VERMILLION 1-11001060 Acres-80.50 \$375.69 S2 SE4 EX RD Sec-16 Twp-22 Rng

Amber Waves



by Dave T. Phipps

Out on a Limb



by Gary Kopervas

The Spats



by Jeff Pickering

TIGER



by BUD BLAKE

OLIVE

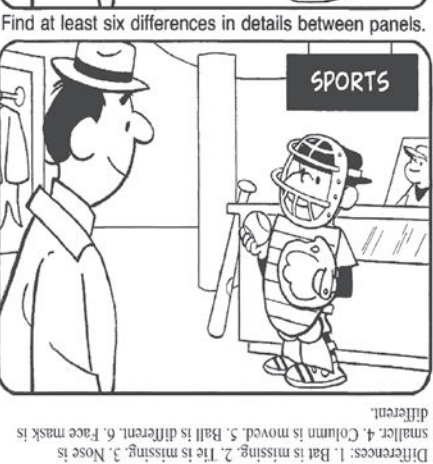


By Emi Burdge

HOCUS-FOCUS



BY HENRY BOLTINOFF



Find at least six differences in details between panels.

Just Like Cats & Dogs



by Dave T. Phipps

CryptoQuip

This is a simple substitution cipher in which each letter used stands for another. If you think that X equals O, it will equal O throughout the puzzle. Solution is accomplished by trial and error.

Clue: F equals C

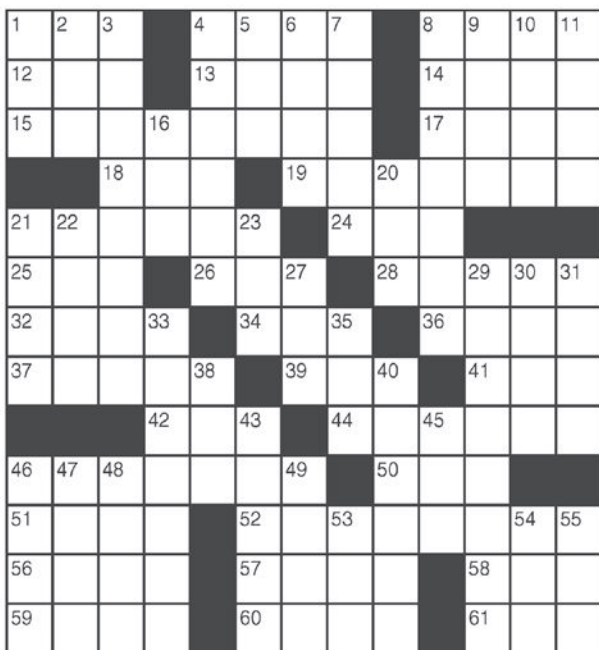
UJFGSRZD VGOZH TWFRJK
 BVWTJ OJOQJDT ZSBZKT IJHC
 IW VRI JZJV WIVJD WH IVJ
 VJZC: QWU FGSIGDJ.

©2025 King Features Synd., Inc.

King Crossword

ACROSS

- 1 "Lion" star Patel
- 4 Obi
- 8 Banshee's cry
- 12 Hot temper
- 13 Nick and Nora's pet
- 14 Conceal
- 15 Pompeii volcano
- 17 Altar vows
- 18 Three, in Rome
- 19 Fairy tale maidens
- 21 Protein-rich grain
- 24 Nanny's charge
- 25 Boot brand
- 26 Eggy quaff
- 28 "Tiny Alice" playwright
- 32 Mr. Guinness
- 34 Online guffaw
- 36 The Emerald Isle
- 37 Name on a vacuum
- 39 Conk on the head
- 41 Kilmer of "The Doors"
- 42 Highland hat
- 44 Goodies
- 46 Weapons store
- 50 Entirely



- 51 Active sort count
- 52 Birthing experts
- 56 Jai —
- 57 Soon, poetically
- 58 Ecol. watchdog
- 59 Apportion
- 60 Wimbledon units
- 61 Half dozen
- 5 "Do — say!"
- 6 Poker variety
- 7 Tears into
- 8 Tea kettle noisemaker
- 9 Staffer
- 10 Pop star
- 11 Minus
- 16 Ornate vase
- 20 Extinct bird
- 21 Campus area
- 22 Unightly
- 23 ISP giant
- 27 Sailor
- 29 Clams and oysters, e.g.
- 30 Part of Q.E.D.
- 31 Congers
- 33 Exclusive group
- 35 Parcel of land
- 38 A Bobbsey twin
- 40 Seafood order
- 43 May honorees
- 45 Yale grad
- 46 Cain's dad
- 47 Actor's quest
- 48 Membership
- 49 Queue
- 53 Speck
- 54 Roof ornament
- 55 Jazz band instrument

DOWN

- 1 Mil. group
- 2 Before
- 3 Traces
- 4 Buy at a dis-

© 2025 King Features Synd., Inc.

Weekly SUDOKU

5				7	1	6			
		1					4	3	
7	4	6		3	1	5			
				4					
			8	5		9	7		
9	7	8		2	4			5	
	5	2		4				7	
4		7		1	2				6
1	9		6	7					

Place a number in the empty boxes in such a way that each row across, each column down and each small 9-box square contains all of the numbers from one to nine.

DIFFICULTY THIS WEEK: ♦♦

- ♦ Moderate
- ♦♦ Challenging
- ♦♦♦ HOO BOY!

© 2025 King Features Synd., Inc.

Trivia test

1. MOVIES: Which best original song from "Aladdin" won an Oscar?
2. TELEVISION: In what year did the animated TV comedy "South Park" debut?
3. HISTORY: Where did the Romans build Hadrian's Wall?
4. GEOGRAPHY: What is the capital of Brazil?
5. U.S. PRESIDENTS: Which president was the first to be impeached?
6. MYTHOLOGY: What is the home of the Greek gods?
7. U.S. STATES: Which state is home to the U.S. Naval Academy?
8. MATH: What is the smallest prime number?
9. LITERATURE: What is the original name of the farm in George Orwell's "Animal Farm"?
10. ASTRONOMY: Which planet is known for its large red spot, which astronomers believe is an ongoing storm?

© 2025 King Features Synd., Inc.

Five Spot™

C	O	U	R	T

Solve each row by replacing one letter from the answer above or below and scrambling to make a new word. When complete, the top and bottom words will have no letters in common.

FiveSpot is a trademark of Michael McLinden. See more at www.sproutsuzle.com 02525

SCRAMBLERS

S	E	M	G
A	R	A	S
S	E	C	R
E	O	R	S
R	O	U	S
T	O	U	R

Solution

1	9	3	6	7	8	2	5	4
4	8	7	5	1	2	3	9	6
6	5	2	3	4	9	8	1	7
9	7	8	1	2	6	4	3	5
2	6	4	8	5	3	9	7	1
3	1	5	7	9	4	6	2	8
8	4	6	2	5	1	5	8	9
8	2	1	9	6	5	7	4	3
5	3	9	4	8	7	1	6	2

Answer

Weekly SUDOKU

Peculiar human society whose members always tend to hit each other on the head: pop culture.

CryptoQuip

- 1. "A Whole New World"
- 2. 1997
- 3. England
- 4. Brasilia
- 5. Andrew Johnson
- 6. Mount Olympus
- 7. Maryland
- 8. 2
- 9. Manor Farm
- 10. Jupiter



Solution time: 25 mins.

King Crossword

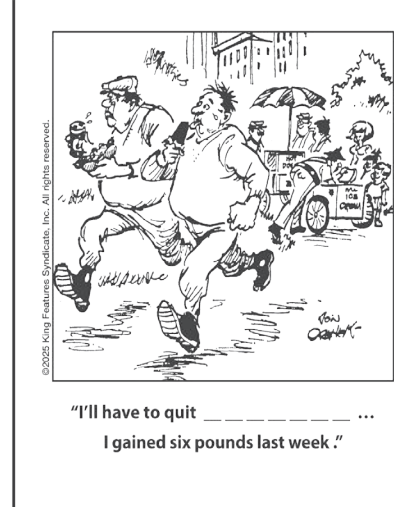
SCRAMBLERS

Unscramble the letters within each rectangle to form four ordinary words. Then rearrange the boxed letters to form the mystery word, which will complete the gag!

- Emblem
- DEBAG
- Limber
- GAILE
- Item
- JOBTEC
- Power
- GINNEE

"I'll have to quit _____
 I gained six pounds last week."

TODAY'S WORD



©2025 King Features Synd., Inc. All rights reserved.

Admit it. None of us are good enough when it comes down to it

Speaking Truth by Clint Decker

CLAY CENTER – Jesus once told a story about two men who went to pray. One was a high standing religious man, while the other was a despised tax collector that had extorted money from many. The religious man prayed, “God, I thank you that I am not like other men, extortioners, unjust, adulterers, or even like this tax collector. I fast twice a week; I give tithes of all that I get.” (Luke 18:11-12)

However, the other man prayed much differently. “The tax collector, standing far off, would not even lift up his eyes to heaven, but beat his breast, saying, ‘God, be merciful to me, a sinner!’” (Lk. 18:13)

Jesus was widely

known for telling stories. They were not told just to entertain, illustrate nor to communicate some generic spiritual truth. Instead, they often had a hidden or very direct meaning. His stories (parables) would point out evil in the hearts of some in His audience which revealed God’s judgement upon them.

His story began with this statement of explanation “[Jesus]...told this parable to some who trusted in themselves that they were righteous, and treated others with contempt.” (Lk. 18:9) Then the story concluded with Jesus saying, “For everyone who exalts himself will be humbled, but the one who humbles himself will be exalted.” (Lk.18:14)

The differences between the two men are clear. The religious man saw himself as a good person because of the good things he did. He was not like everyone else. He was better. Meanwhile, the tax collector saw himself as nothing. There was anguish in his soul, while shamefully admitting all the wrongs he had done. He believed he was so undeserving of God’s forgiveness that he felt he could do nothing but plead for His mercy.

Today, there are millions just like this religious man. Multitudes feel good about themselves because of their efforts at doing good things. They count the wrongs they have done with imaginary moral insurance to soothe their

conscience. They are convinced the good things they have done for the church or others, or upright moral behaviors they have tried to live by, should be pleasing and acceptable before God.

And like the religious man, they view themselves as better than the other guy, or even better than they once were. They are not like the drug dealers, like the ones convicted for indecent liberties with a child or like the slimy and corrupt politicians. They see “those people” as the ones who need help, not themselves.

These attitudes are dangerous! They produce an annoying and obnoxious sense of pride that rouses the anger of God. He hates

it! This is why the spirit of the tax collector pleased God. Because he had a humble heart. He recognized the true condition of his soul, “None is righteous, no, not one...no one does good, not even one.” (Romans 3:11,12) The tax collector could have pointed to some good things he did in his life, but he chose not to. His sin. His failure before God was so overwhelming, he could not. One million good things could never wash away the dirtiness of his eternal soul. He believed that his only option was to plead for the mercy of God and hope He would hear and respond.

Praise God! This story from Jesus, points to His glorious cross. For the prideful, God will give them

what they deserve, but for the humble of heart, He will graciously grant them what they do not deserve. His unmerited kindness will grant complete and total forgiveness for all their wrongs.

Walk in the humble spirit of the tax collector, call out for God’s mercy upon your soul. Then because of Jesus death and resurrection, freedom will be yours.

A prayer for you – *Lord God, examine our hearts. If we have an ounce of pride, point it out that we might turn from it. And let us have the spirit of the tax collector. Bring us to humble ourselves before you and plead for your mercy upon our souls. In Jesus’ name. Amen.*

KOBACH...

FROM PAGE 1

court — and the AG decides the state’s position.

“While the governor exercises certain executive functions, she does not control Kansas’s legal affairs, including its litigation in federal court,” Kobach said in the brief. “Rather, that authority lies solely with the attorney general ... who declined to entangle Kansas as a plaintiff in this litigation — which he believes will ultimately be unsuccessful.”

Kelly spokeswoman Olivia Taylor-Puckett said the governor joined the lawsuit as part of her executive authority.

Taylor-Puckett said the Kansas Constitution vests the supreme executive power in the governor, who is responsible for enforcing the laws of the state, the Sunflower State Journal reports.

“In fulfilling her duty as the supreme executive power in the state of Kansas, Gov. Kelly is standing up against a presidential administration that continues to strip millions of dollars from critical programs that Kansans depend on,” Taylor-Puckett said. “The attorney general was repeatedly asked to exercise his responsibility to protect the people of Kansas and he refused.”

Kobach told the Legislative Coordinating Council on Thursday, August 14, 2025, that he did indeed refuse to do so.

Kobach said he believes the plaintiffs in this case

will “lose on the merits.”

“Regardless of the relative virtues or necessities of receiving federal funds in any given area,” Kobach said, “the legal claims that the states are making are not winners.”

The LCC approved a motion made by Kansas Speaker of the House Dan Hawkins to state only that the AG may represent Kansas in litigation and that the governor’s attempt to join the lawsuit is a violation of state law.

Senate Minority Leader Dinah Sykes and House Minority Leader Brandon Woodard opposed the motion.

Moreover, in the brief, Kobach argues that enforcing Kansas law is not contingent on federal funds.

“The constitutional authority Gov. Kelly invokes — enforcing Kansas’s laws — is not contingent on federal grants,” Kobach wrote. “The Kansas Constitution does not make receipt of temporary disbursements of money from federal agencies an integral component of the state’s governance.”

“Tellingly, Gov. Kelly cites no Kansas constitutional provisions or statutes that have been, are, or will be rendered wholly unenforceable due to the cancellation of federal grants. And without any such citation, she has facially failed to plead an injury to her constitutional office. There is no indication that she cannot enforce state law without relief from this court.”

a four-foot by four-foot area of turfgrass near an area that looks damaged. If fall armyworms are present, they will crawl to the surface and be easier to identify. It’s always a good idea to test several areas to be sure, the Internet post says.

WALK THRU ESTATE SALE

Yoder Auction Service

August 21, 22 & 23

Location: 506 N. Pine • Garnett

ANTIQU VEHICLE

•1959 Nash Metropolitan, appr. 38,000 original miles, 1.5L in-line 4 cylinder engine, very nice

SHOP/ OUTDOOR

- Maxx Air 24" fan
- Titleist golf clubs and bags
- Coleman camp stove
- Coleman 2 mantle lantern, self lighting
- Garden hoses, garden hose stands
- 12 volt air compressor
- Abu Garcia fishing rod w/ Master 705 reel
- Rebel tackle box full
- Several smaller tackle boxes full
- Bass Pro folding canvas tacklebox full
- Lots of new fishing spoons, Blue Fox, Mepps, Etc.
- Other misc. fishing items
- Leather boot bag
- Extension cords
- Delta 10" compound miter saw
- Very nice folding lawn chairs.
- Several cast iron it's charcoal grills
- Pioneer 202 Bounty Hunter metal detector
- Crossman BB gun
- Several wood baseball bats
- Several baseball gloves
- Wilson badminton set
- Tennis balls
- RV adapter cords, hoses, etc.
- 12 Ga. Shotgun ammo
- Shovels, rakes, garden hoses, sledgehammers, pitch forks, axes, hatchets, weed whackers, whoppers, post hole diggers, rock bar
- Several workmate workbenches
- ShopSmith Mark 7 w/ attachments- wood lathe, table saw, 2 belt sanders, band saw, 12" thickness planer, jointer, scroll saw, - Very nice
- ShopSmith DC 3300 dust collector
- Skil Classic 2 HP router on Vermont American table
- Skilsaw 10" miter saw
- Lots of pipe clamps, wood furniture clamps
- Rockwell portable folding tools tandem
- Ridgid Spindle sander
- B&D 12v cordless drills
- Strait Line laser levels
- Foley Belsaw lawnmower blades sharpener
- Craftsman 18 ga. Brad nailer
- B&D driver/ drill bit set
- Bosch 10.8v cordless impact driver
- Wood & metal drill bits
- Old draw knives
- Larin 5" multi function bench vise
- Plumbing hatchet w/ original leather sheath
- Several sharpening stones
- Hammers, screwdrivers, files, calipers, chisels, punches, pipe wrenches
- Tin snips, adjustable wrenches, wood planes, vise grips, leather punch, grease guns, circular saw blades various sizes
- C A Herriman No. 15 8" bench vise
- Lots of nails, screws, miscellaneous hardware
- GlaStar Diamond Glass grinder
- GlaStar foiling machine
- Shop creeper
- 16 2'x2' interlocking fatigue mats
- Precision Pantograph
- Lots of work and drop lights
- New dbl. strength ratchet straps
- Campbell Hausfeld automotive air spray gun
- Goodyear 12v car vac
- Fire Kiln clay Chimney
- Wrought iron marble top patio table and 4 chairs
- KU Jayhawk weather vane
- Miscellaneous shop
- 40" lawn Thatcher
- Car ramps

- Garden lanterns
- 6' & 2' wood stepladders
- Several tarps
- Multipurpose lawn cart
- Ex-Cell 2800 PSI pressure washer
- John Deere backpack leaf blower
- John Deere 120 Elec. Pressure Washer
- John Deere 3K gas lawn edger
- John Deere 750 generator, NIB
- John Deere 82G string trimmer
- Brinkmann Gourmet elec. Smoker
- Sonoma oversized anti gravity lawn chairs
- Horse bridle bits
- Bird feeders, wind chimes
- Hi- Lift jack
- Back pack hand sprayer
- Come-a-long
- B&D Leaf Hog leaf blower, elec.
- Gambles folding safety ladder
- 12" alum. Ext. Ladder
- Drum Deheader
- Log chains, jumper cables, bow saws
- George Foreman elec. Grill
- Puffy Men's & Ladies 15 speed bicycles
- Craftsman 19.2 cordless tools set
- Several shepherd's hooks
- Several steel T posts
- Flower pots
- Metal trellis
- Wood and steel pulleys
- Shoe Cobblers kit
- Taurus II Ring Saw, high speed omni directional diamond wire saw
- Small kiln
- Several Ozark Trail air mattresses with electric air pumps
- 2 Anderson County Kansas History books by James Y Campbell 1977
- Motorized coin counter/sorter w/ coin sleeves
- Several board games
- Hunt Furniture Co., Garnett mini cedar chest
- GT 3000 air purifier

ANTIQUES & COLLECTIBLES

- Antique farmhouse cast iron three-leg cauldron bean pot
- 36" cast iron cauldron
- 2-20" pot bellied cast iron handled cauldron
- 12" pot bellied cast iron handled cauldron
- 34" cast iron eared cauldron
- 20" cast iron handled cauldron
- American Bell Foundry Co. No.20 cast iron bells w/ cast iron base, 34" T x 20" D
- Wedge brass hanging oil lamp
- Brass Touch lamp
- Number of silver cafes and servers
- Cast iron horse head hitching post
- #10 Western Stoneware Co. Crock, blue leaf
- Antique porcelain and glass doorknobs
- Antique wood kids chairs
- Tinker Toy Big Boy set
- Skilcraft microscope lab
- Baufix wooden construction kit
- John Deere Reliance model buggy, metal, boxed
- 15 John Deere pewter historic collection, tractors, trucks, threshing machine
- Schartz pottery vase & 3 pc. Wall plate set
- Bavarian pitcher
- 12 Days of Christmas sterling silver ornaments
- Several Polaroid Instamatic cameras, other cameras
- Piano sheet music
- Attila ladies bust ceramic sculpture
- Blenko Cobalt blue half circle book ends
- Blown glass paper weights
- Vintage European Goat Cart
- Tiffany Style desk lamp w/ stained glass shade
- Stanstead wooden hand carved Canadian Goose
- English Horse Brass medallions on leather

- strap
- Boyd's stuffed bears
- Twila Divins 1998 stuffed bear
- French style 3 branch lily pad table lamp
- Several nice hand stitched quilts & pillow cases
- Whieldon Ware Elysian pitcher & bowl set, F. Winkler & Co. England
- Antique Armand Marseille Porcelain Doll, 30", blown glass eyes, mohair wig, Certificate of Appraisal
- Elke Hutchens 1987 doll, 25"
- Knox Madison Avenue fedora, boxed
- Lots of nice ladies clothes, jackets, blouses, etc.
- 6 Charles Wysocki Folktown numbered limited edition plates and shelf
- Helen R. Hurricane lamp, elec. Hand painted
- L. E. Smith Jackie pink satin powder jar
- Copper sailboat mobile
- Ironstone pitcher, J & G Meakin Hanley, England
- Wolfard Glassblowing Co. Classic Bundle set, wall oil lamps
- Several Alpaca Rugs
- Several Kangeroo skin
- Ford-0 Model T kerosene tail light lantern
- 4.5" blown glass ball, suspended bubbles
- Antique Milner brass safe plate
- Several Sony Walkmans
- Brass ships wheel, wood handles
- Antique Carom board
- Brass hunting wall match holder, dbl. Pocket
- 5 wood Covered Bridge wall décor
- Hanksraft Whisper Mist humidifier
- 2 The Rochester brass hanging saloon oil lamps, 33"
- No. 2, 5, & 6 Red Wing crocks, Union Stoneware Co.
- 1958 John Deere Salesmanship award tractor, gold edition
- Copper Boiler w/ lids
- Early Maxwell Model 22 Brass Oil sidelamp
- Vintage Wood Pineapple butter mold
- Antique Hickory Dome Top Nipple Wood snow skis w/ Ranger bamboo poles
- 1920s English brass tipped walking stick/ cane
- Delft Holland hand painted plate
- Vintage pewter with brass details duck trinket box
- John Deere Boomerang
- 20" Turquoise Rooster, Stone Plaster
- Stimpson's Dbl. Wall pitcher, No 498, April 17, 1854, Meriden Co

FURNITURE

- Office chair, padded, nice
- 3 wood shelves, 6T
- Costco folding stool
- Handicap equipment, shower chairs, canes
- 4 padded swivel bar chairs
- Baldwin Acrosonic piano and bench, walnut, nice
- Kimball Walnut corner office desk, w/ key, very nice
- 2- sets of 4 padded oak dining chairs
- 2 Victorian Style walnut parlor chairs, wood peg assembled
- Modern glass front bookcase, 2 door
- Antique oak round side table, glass ball & claw feet, spiral legs
- Kenmore Modifier sewing machine in solid wood cabinet
- Queen size bed, Kingsdown box spring & mattress
- Glider rocker & Ottoman
- Antique oak side table, marble top
- Walnut King Size sleigh bed, Sleep Number P5 mattress & box spring
- Antique Burled Walnut dresser, beveled mirror, porcelain castors, marble top, Eastlake style, very nice
- Queen size bed, Diana pillowtop mattress and box

- Howard Miller Grandfather clock, Model 610-182, SN 299245, registered
- Bauhaus matching love seat w/ cushions
- 2 matching padded accent chairs
- Antique mission oak rocker
- Modern glass top TV stand

HOUSEHOLD

- Sharper Image, 6' pop up LED christmas tree
- Oscillating fan
- 2- 2 drawer file cabinets
- Lots of high-end, Christmas ornaments
- Heat Surge elec. Fireplace
- Bedding
- Luggage
- Bassinnet
- WagnerWare #6 Cast Iron skillet
- Wagner's 1891 original cast iron Dbl. Griddle, 17"
- Calphalon 18" commercial roaster
- Donnie ice cream maker
- Commercial Aluminum cookware
- Stainless steel double hot plate
- Stainless steel 12 quart stock pot
- West band 30 cup insulated automatic coffee maker
- Mirromatic pressure cooker
- GE electric skillet
- White Westinghouse coffee maker
- Mr Coffee coffee maker
- Large George Foreman grill
- Rival stainless steel crock pot
- Sears Tower Automatic remote 500 projector
- Vintage Gotham Pro Action Elec. Vibrating Football game
- Several Sombreros
- Red and Green pyrex bowls
- Copper Chef 12.5 qt. Wonder cooker NIB
- Several Antique oil lamps
- Hand Decorated Weil Ware China set
- Camel back trunk
- Glass top display table
- Suncatchers
- Copper coffee pot
- Copper pitcher/ umbrella pot
- California Rainbow plates and cups
- Mango Passion dinnerware set
- Mikasa Fine China set
- Brass desk lamp
- Paper shredder
- Hp printer
- Lots of liquor decanters
- Glass ice servers
- Metal decorative sheep bell
- Elec. Fireplace
- Sonoma lifestyle throw rug, 5'x3.5'

KITCHENWARE

- Red glass canister sets, moon & stars
- Assorted plastic storage containers
- Kitchen utensils
- Oster Blender
- Magic Bullet blender w/ accessories
- Several Woks
- Miscellaneous cookie Sheets
- Pampered Chef cutting board
- Pampered Chef Bar Pan
- Cornflower Corningware, casseroles w/ lids, roasters, platter
- Crock pot
- 2 slice toaster
- 2 sets Carvel Hall stainless steel steak knives
- Chicago cutlery steak knives
- Hamilton Beach elec. Hand mixer
- B&D elec. Knife
- Tramontina cookware
- Citrus creamer w/ measuring pitcher
- Some Tupperware
- Vintage Green glass measuring pitcher
- Correlle plates and bowls
- B&D elec. Steamer
- J. A. Henkels kitchen knives & block
- Ceramic pitchers

WORM..

FROM PAGE 1

the earlier they're detected the better.

Sedgwick County Extension gives a tip for testing grass for the worms. Mix one tablespoon of liquid dish soap in one gallon of water. Pour this soapy water solution onto



You Name It, We Print It

Quantities from 25 to 25,000,000

State-of-the-Art Digital Capabilities • New Direct-to-Plate Press • Award-Winning Graphic Design

- Business Cards
- Custom Forms to fit your business
- Custom Computer Forms
- Full-Color Brochures
- Pens, Ballons, Novelties
- Carbonless Forms
- Customized Folders
- Business Cards
- Letterhead
- Envelopes
- Postcards
- Direct Mail Assistance
- Digital Photography
- Latest Technology
- Fastest Service

Same-day estimates are always FREE!

Garnett Publishing, Inc.

785 448 3121
112 W. Sixth Ave. • Garnett, KS 66032

Doors open at 8 a.m.

Sellers: Bob and Donna Umbarger

Nothing removed from premises until paid for. • Cash, check and now accepting credit & debit cards w/ 3% per transaction fee.

Auctioneers not responsible for theft, accident or loss

Statements made day of auction take precedence over printed details • Pictures and sale bill on KansasAuctions.net

YODER AUCTION SERVICE

Auctioneers: Ben Yoder (785) 448-4419

Need a Fistful of Dollars?

Sell your items in the Anderson County Review classifieds!



It's **EASY** to place your ad! • (785) 448-3121 • (800) 683-4505 • admin@garnett-ks.com

Advertising Rates

Classified Rates:
 Up to 20 Words.....\$6.00
 Each addtl' word.....64¢
 (Commercial).....76¢
 Class Display.....\$9.85/dm.in.
Run Of Press Rates:
 Standard ROP.....\$9.00/dm.in.
 Color.....\$65
 Pre-print inserts.....\$158.40
 Front Page
 Masthead Banner (w/color).....\$300
 Bottom Page (w/color).....\$100
 Statewide/multi-state.....Quote

Terms

- Cash in advance
- Visa, Mastercard, Discover
- Credit to established accounts

Deadline

Classified Ads: 10am Friday
 Display Ads: Noon Thursday

Call or send in your ad:

(785) 448-3121
 FAX: (785) 448-6253

EMAIL:

admin@garnett-ks.com
 Mail:
 Garnett Publishing, Inc.
 P.O. Box 409
 Garnett, KS 66032



REAL ESTATE

View all local properties for sale at our website:
www.KsPropertyPlace.com
 Now offering
Auction Services!
 Call
 (785) 448-3999

CALL CRYSTAL METCALFE TO SELL YOUR HOME
 C-(913) 579-5288
 O-(816) 629-4494

Benjamin Realty
 Sherry Benjamin, Broker
 Land • Homes • Commercial

201 N. Maple
 Garnett, KS 66032
 benjaminrealty@earthlink.net

Office: (785) 448-2550
 Home: (785) 241-0532
 Cell: (785) 304-2029

Gold Key Realty

Carla Walter • Owner/Broker
 785-448-7658 (cell)
www.goldkeyrealtyks.com

MISCELLANEOUS

Place your 25-word classified in the Kansas Press Association and 135 more newspapers for only \$300/week. Find employees, sell your home or your car. Call the Kansas Press Association @ 785-271-5304 today!

Stop overpaying for health insurance! A recent study shows that a majority of people struggle to pay for health coverage. Let us show you how much you can save. Call Now for a no-obligation quote: 1-888-519-3376 You will need to have your zip code to connect to the right provider.
Attention: Viagra and Cialis users! A cheaper alternative to high drug-store prices! 50 Pill Special - Only \$99! 100% guaranteed. Call now: 1-866-481-0668

We Buy Vintage Guitar's! Looking for 1920-1980 Gibson, Martin, Fender, Gretsch, Epiphone, Guild, Mosrite, Rickenbacker, Prairie State, D'Angelico, Stromberg. And Gibson Mandolins / Banjos. These brands only! Call for a quote: 1-877-560-1992

Got an unwanted car??? Donate it to Patriotic Hearts. Fast free pick up. All 50 States. Patriotic Hearts' programs help veterans find work or start their own business. Call 24/7: 1-877-560-5087

MISCELLANEOUS

Cash paid for high-end men's sport watches. Rolex, Breitling, Omega, Patek Philippe, Heuer, Daytona, GMT, Submariner and Speedmaster. These brands only! Call for a quote: 1-866-481-0636.

Water damage clean-up & restoration: A small amount of water can lead to major damage in your home. Our trusted professionals do complete repairs to protect your family and your home's value! Call 24/7: 1-877-586-6688. Have zip code of service location ready when you call!

Need new windows? Drafty rooms? Chipped or damaged frames? Need outside noise reduction? New, energy efficient windows may be the answer! Call for a consultation & FREE quote today. 1-866-766-5558 You will need to have your zip code to connect to the right provider.

Bath & shower updates in as little as one day! Affordable prices - No payments for 18 months! Lifetime warranty & professional installs. Senior & Military Discounts available. Call: 1-866-481-0747

Aging roof? New homeowner? Storm damage? You need a local expert provider that proudly stands behind their work. Fast, free estimate. Financing available. Call 1-877-589-0093 Have zip code of property ready when calling!

Injured in an accident? Don't Accept the insurance company's first offer. Many injured parties are entitled to cash settlements in the \$10,000's. Get a free evaluation to see what your case is really worth. 100% Free Evaluation. Call Now: 1-888-920-1883

FARM & AG

American Walnut - buying standing timber. Must have 25 or more trees. Call (916) 232-6781 in St. Joseph for details. fb15tf

SERVICES

You name it, we print it.

Garnett Publishing, Inc.
 (785) 448-3121

SERVICES

Professional Lawn Service: Fertilization, weed control, seeding, aeration and mosquito control. Call now for a free quote. Ask about our first application special! 1-833-887-1317

Johnathan Edgecomb • (785) 448-3899
 In Business Since 1997

EDGECOMB FLOORING
 SALES & INSTALLATION

FREE in-home consultation with our MOBILE SHOWROOM!

SAVE 40% off regular retail pricing on name-brand flooring!

Check out our Monthly Specials

CARPET • TILE • VINYL
 HARDWOODS • LAMINATE

MAKE MONEY USE THE CLASSIFIEDS!!

Edgecomb Builders
 General Contractor

Custom Homes
 Additions
 Finishing Trimwork
 Remodels

Lonnie Edgecomb (785) 204-1580

JB Construction

Decks • Siding • Pole Buildings • Garages

Joe Borntreger
 (785) 448-8803 • joe.borntreger@yahoo.com

WANT TO VOLUNTEER?

The Governing Body of the City of Garnett invites interested persons who wish to fill a board vacancy, or who would like to be considered for the next term of any advisory board or volunteer position, vacant or not, to please submit their name and statement of interest to Garnett City Hall for consideration. Currently there is a vacancy on the Parks & Recreation Board. Statement of Interest forms can be found on our website www.simplygarnett.com or can be picked up at City Hall. As always, if you have any questions, feel free to call City Hall at (785) 448-5496 or email info@garnettks.net.

HELP WANTED

Part-time cook needed at the Anderson County Jail. \$15 starting wage. Must have high school diploma and be able to pass background check. May turn into full-time later on. Call 785-448-6814. ag21t4*

Make it grow!

Your wallet that is. Ag products and services sell when they're listed here. Call the Review today to place your ad.
 (785) 448-3121

HAPPY ADS

Happiness is... your chance to win the Henry "Golden Boy" .22 Caliber Rifle drawing. \$10 donation per ticket or 3 for \$20. Tickets available from any member of the Garnett Lions Club or at Garnett Publishing, Inc., 112 West 6th in Garnett. ag21t2*

Happiness is... shopping Garnett Publishing for copy paper. Good quality paper by the ream or case. Stop by our office at 112 W. 6th mc14tf

Happiness is . . . submitting your FREE wedding announcement ONLINE for publication in The Anderson County Review. Go to www.garnett-ks.com and click the form under "Submit News." Fill in the form and click SUBMIT. Available FREE 24 hours/day! oc24tf

Happiness is... subscribing to the Anderson County Review! Call (785) 448-3121. my19tf

Make a HUGE SPLASH STATEWIDE

Or target your ad regionally for the most cost effective media buy anywhere!

Statewide Ads appear in over 140 newspapers, reaching more than a million readers each and every week.

Display, Classified & Online networks available!

Need a more targeted campaign or looking for national coverage? Call us today to customize your plans.

Kansas Press Association

(785) 448-3121

Building the
AMERICAN DREAM
 from our Kansas locations for over

Hundreds of design ideas @ MortonBuildings.com

50 YEARS

MORTON BUILDINGS®

LOCATIONS ACROSS KANSAS

800-447-7436

©2024 Morton Buildings, Inc. A listing of GC licenses available at mortonbuildings.com/licenses

Anderson County news DAILY

KOFO
 103.7 FM • 1220 AM

Honesty & Fair Prices Built To Last Generations

Sold by local reps, built by skilled local crews

Garages | Shops | Ag Buildings
 Sold by local reps, built by skilled local crews

800-374-6988 // QualityStructures.com

QSI
 Richmond, KS
 Haven, KS

KANSAS STATE FAIR

SEPT. 5-14 HUTCHINSON, KS

NEX-TECH GRANDSTAND ENTERTAINMENT

Sept. 5	Sam Barber with Avery Anna
Sept. 6	Jeff Dunham
Sept. 7	Josh Turner with Jason Scott & The High Heat
Sept. 8	Demolition Derby
Sept. 9	Tuesday Night Fairified Pro Wrestling
Sept. 10	Josiah Queen with Ben Fuller
Sept. 11	Hairball
Sept. 12	Ludacris with DJ Infamous
Sept. 13	The Fray with Plain White T's
Sept. 14	Lorrie Morgan with Mason Ramsey

Nex-Tech Grandstand is sponsored by Nex-Tech Wireless and Nex-Tech.

KansasStateFair.com



THE ANDERSON COUNTY REVIEW 08-21-2025 / JOHN SCHUSTER COLLECTION

Workers were not hard to find in 1938 when the City of Garnett offered to pay 30 cents per hour to residents who would help build a water line from Lake Garnett to Crystal Lake. Ed Hingle, foreground, was in charge of the work. It took 108 men to do the work and about 8 or 9 days to complete the water line which extended more than a mile and a half, much of it through rock.

Lions enter final weeks of rifle raffle fundraiser

Lion Vice President Mike Canavan called our meeting to order at 6:34 PM with eleven (11) members in attendance.

The Pledge of Allegiance was recited, The Lord's Prayer offered, and America was sung.

The Secretary's minutes were not available at our meeting. Lion Chelsey advised that she would email the minutes out and then print and provide the minutes from the last meeting at our next meeting in September.

The Treasurer's report was verbally provided. \$11,459.67. Lion Dave advised he would provide a formal financial report the September meeting.

Old Business

Alternative Fundraiser: As of the meeting, we stand at \$1,990 net for this fundraiser. Lion Dave advised he does know of about another \$100 in sales that he has to pick up, but we will break the \$2,000 mark in profit before we draw the winner. We will hold the drawing on 01 September at the Anderson County Review and allow a neutral party to draw the winning name.

Watermelon Feed: Friday, 22 August at 4:45 will be the annual feed. This year, the Rotary will be purchasing the melons, but we will need Lions to help work the event! Knives will be furnished!

New Business

Back the Blue Night: Stan Milliken is working on a community event to come together and show support for our Law Enforcement Agencies, and asked that Civic Organizations in town participate. Lion Chelsey advised that when we know more about what is needed, she will bring it back to the club.

250th Birthday of the U.S.: Lion Dane advised he had recently attended a meeting with the Chamber of Commerce and the Economic Development team, who are in the beginning stages of planning a bigger event this summer to celebrate the semi-quintennial Birthday of the U.S. He advised that it could be a great time to get into the community and recruit new members. He suggested that he would report back with additional information as it becomes available, but we should consider how to help.

Lion Keith motioned to adjourn the meeting at 6:48 PM. Lion Dane seconded—the motion passed by acclamation.

Future Planning

22 AUG - Watermelon Feed (Rotary's turn to buy watermelon. 01 SEP - Rifle Raffle Drawing

15 SEP - Next Regular Meeting

(Lions purchased in 2024 and 2023.)

There were other examples, too. It's rather sickening if you think about it. However, this is your modern-day, anti-American, anti-safety, anti-protecting-innocent-Americans Democratic Party. They think people in ICE who risk their lives to protect others are "losers."

Again, all Cain did was announce he was joining a law enforcement agency that works to put away murderers, rapists, pedophiles, drug traffickers, human traffickers, abusers, and all other kinds of villainous people in the country illegally who seek to hurt, harm, or kill innocent Americans. Yet, protecting Americans causes Democrats, liberals, and leftists to seethe with rage. It's disappointing to see their lack of concern for Americans, yet comical to see their irrational and unhinged hatred. ###

TREMOGLIE...

FROM PAGE 4

the Rileys or Morins of the world. They ignore those tragedies and choose not to comment about them like they do about Cain. It's indicative of how toxic and corrosive today's left-wingers and Democrats are.

Then there was actor John Leguizamo, who, like his left-wing brethren among the Hollywood elite, also criticized Cain. He called him a loser for joining ICE — again, the law enforcement agency that protects Americans from being harmed by the crimes of illegal aliens.

"What kind of loser volunteers to be an ICE officer?" he said in a post on Instagram. "What a moron. Dean Cain, your pronouns are has/been."

LOWRY...

FROM PAGE 4

Democratic-held 33rd district, where non-citizens are nearly 30% of the population, has 208,000 fewer voting-age citizens than the Texas 21st district. So the citizens in the 33rd district have marginally more clout and representation, thanks to a population tilted toward those who can't vote.

Ultimately, the way to diminish these effects is to reduce the level of immigration. Early indications are that there has been a large exodus of illegal immigrants since Trump's election, and the U.S. will have net negative migration for the first time in half a century. If Trump wants to fully capture the changes he's effecting in immigration policy, he should indeed want a new census -- in 2030.

Rich Lowry is editor of the National Review.

Health Services DIRECTORY



Dentistry

GARNETT FAMILY DENTAL

GarnettFamilyDental.com

- Family Dentistry
- Orthodontics
- Dental Implants
- Sleep Apnea
- Cosmetics

Call us today
(785) 448-2487

240 W. 4th Avenue

Family Care

Pheasant Ridge Family Medicine
(785) 448-6988

Ross Kimball, M.D.
Sarah Nuessen, P.A.

312 S. MAPLE • GARNETT

Eye Care

Walmart Vision Center

Ottawa, Kansas

Call (785) 242-3116 to schedule your exam.

Chiropractic

Feel better!

Balanced Healthcare Clinic

"Your Wellness Connection"

Dr. Glenn D. Bauman
Chiropractic Physician
120 S. Maple • Garnett
785-448-2422
M/W/F: 8:30 a.m. - 5:30 p.m.

School Physicals \$35
DOT Physicals
National Registered & Certified Medical Examiner
Drug/Alcohol tests available.

Hospice

good shepherd HOSPICE

YOUR HOMETOWN HOSPICE PROVIDER

(785) 448-6590

427 S. Oak Garnett

Pharmacy

Maple & Hwy. 31 MON-FRI 8:30am-7pm
Garnett, KS SAT 8:30am-2pm
Next to Country Mart

AUBURN PHARMACY

We accept all Medicare drug plans.
(785) 448-6122



Start the School Year Strong With a Checkup

Keeping children—and the adults who care for them—healthy is the best way to prepare for school.

At Anderson County Hospital's Family Care Center, we provide expert care for the entire family, including:

- Child and adult wellness visits
- Routine vaccinations, including measles boosters
- Well-woman visits and contraception management
- Treatment for acute and chronic illnesses

Schedule an appointment
Family Care Center
785-448-2674
saintlukeskc.org/fcc

Anderson County Hospital
SAINT LUKE'S HEALTH SYSTEM

FOR SALE BY OWNER?

There's no better spot than this one to tell your potential buyers you want to sell! Call to place your ad today - (785) 448-3121