

The Anderson County Review



Probitas, Veritas, Integritas In Summa



COPY PRICE - ONE MEASLY U.S. DOLLAR

August 20, 2024 SINCE 1865 158th Year, No. 31

The official newspaper of record for Anderson County, KS, and its communities.

www.garnett-ks.com | (785) 448-3121 | review@garnett-ks.com

E-statements & Internet Banking



GSSB

Member FDIC Since 1899

(785) 448-3111

Man sentenced in October armed standoff

Chambers' sentencing set for September after jury convicts on felonies

BY DANE HICKS THE ANDERSON COUNTY REVIEW

GARNETT - A local man who held law officers at bay with an AR-15 rifle last October was convicted of associated felonies last week in Anderson County District Court and will be sentenced September 23rd.

James Lonnie Chambers had his bond revoked after the verdict and was remanded to the Anderson County Jail pending his sentencing. An Anderson County jury found Chambers guilty on four of five felony counts brought by Anderson County attorney Elizabeth Oliver, including two felony

counts of aggravated assault against a law enforcement officer and lesser charges of criminal threat and aggravated domestic battery.

Chambers never fired on officers but armed himself with several weapons and barricaded himself into a garage at the family's home on North Oak Street in October of last year after a domestic incident involving his wife and family. After some four hours of negotiation, law officers and tactical teams from outside the area used a vehicle mounted battering ram



Chambers

SEE VERDICT ON PAGE 2



Local and regional law officers surround a house on North Oak Street in Garnett last October in an effort to convince James Chambers to surrender. A local jury handed down felony convictions against Chambers in connection with the incident last week.

THE ANDERSON COUNTY REVIEW 8-20-2024 / Review archive photo



THE ANDERSON COUNTY REVIEW 8-20-2024 / DANE HICKS

Seattle's Dana Langworthy with the stone she and relatives funded to be placed at the grave of her great aunt Merriam Hesp, who died as a toddler in 1911 and whose grave was never marked.

ents, Civil War veteran James Fisher Walker and Sarah Ann (Miller) Walker. Later, in the fall of 1911, her father, mother and sister would move from Nebraska to Colorado and later on to Yakima, Wash., following Bertha's parents and siblings who were enroute to people a new United Presbyterian Church there. Washington also promised farm ground with better weather and more rain. For whatever reason, the family never committed the resources to mark their young daughter's grave in Kansas. In fact Langworthy doesn't know if, indeed, the family ever returned to the state, even to visit.

Miriam's story survived her however, retold by her older sister nearly a lifetime later to her grandniece, Dana Langworthy.

Langworthy was a young girl when her grandmother Laura told her about her little sister Miriam. In Laura's memories she wrote, "In the spring of 1911, as the story was told to me, a young man from Garnett came to work



Laura, Merriam, Earl Thomas and Belle Ghormley Hesp. The photo was shot just before 18 month-old Merriam died of smallpox.

death and the sadness in the house. She was buried in Garnett Cemetery in the Hesp section - I have a slight memory of the funeral."

The passages from her grandmother's writings stuck with Langworthy. Over time another question from her grandfather intrigued her - the possibility that he might have been adopted, a suspicion

Local priest removed from post pending outcome of investigation

"Alleged incident involving an adult" basis for move, officials say

BY DANE HICKS THE ANDERSON COUNTY REVIEW

GARNETT - A local parish priest was relieved of his duties last week by the Kansas City Archdiocese pending the culmination of what a church notice called an "active criminal investigation by the Garnett Police Department."

Garnett Police Chief Kurt King told the Review early last week Father Daniel Stover was not arrested, but he provided no additional information.

"On Thursday, August 8, 2024, the Archdiocese of Kansas City in Kansas became aware of an active criminal investigation by the Garnett Police Department of Fr. Daniel Stover," read a

notice on the archdiocese website. "The matter regards an alleged incident involving an adult. Father Stover is entitled to a presumption of innocence at this time."

The notice said Stover's "faculties (official authorizations) for the public exercise of priestly ministry" had been temporarily removed pending the outcome of the investigation.

"A precautionary removal of faculties is a step to protect all parties, and should not be viewed as an assertion of guilt," the notice said. It said a temporary administrator had been assigned to



Stover

SEE STOVER ON PAGE 2

New USD 365 budget expects additions to district's cash reserves

GARNETT - USD 365 will likely bank several hundred thousand dollars in public funds that will be raised but will go unspent in its 2024-2025 budget, forwarding those dollars on to future years and building a cash reserve that according to state finance documents now tops \$7.6 million.

District patrons will have the opportunity to comment on the proposed \$24.1 million budget for next year which includes a \$345,724 increase over last year's authorized spending and includes an additional \$3,700 next year in local property taxes over the current year's tax load of \$5.3 million. A hearing on the 2024-2025 draft budget for the school district will be held 7:30

p.m. on September 5th at the boardroom at 305 North Oak in Garnett.

Next year's proposed budget would a tax levy of 49.151 mills that will generate \$5,350,722, compared to the 48.267 levy for the current year which generated \$5,301,835. Last year's approved budget was \$23.8 million.

But estimated expenditures looking to the end of the year in a number of spending areas probably won't hit those authorized limits according to this year's budget summary. Chief among those is the district's special education line item, reflect-

SEE 365 ON PAGE 7

U.S. Supreme Court rules against Biden/Harris transgender focus in revised Title IX

WASHINGTON, D.C. - In a late Friday afternoon ruling the United States Supreme Court blocked changes to the federal Title IX education law redrafted by the Biden/Harris Administration that would have allowed men claiming to be women to participate in women's sports, with access to their restrooms and locker rooms, in all public schools receiving federal funding.

Biden's revised ruling went into effect August 1st for 24 states. The remaining 26 state governments, including Kansas,

passed laws protecting women's sports and private facilities from male incursion.

The Biden/Harris Administration's Title IX changes expanded the definition of "sex" to include "sexual orientation and gender identity." The original law was passed in 1972 and prohibited discrimination against students based on sex in schools receiving federal funding, and was broadly credited with a massive expansion of women's sports at the high

SEE RULING ON PAGE 5

Just to be remembered

BY DANE HICKS THE ANDERSON COUNTY REVIEW

GARNETT - It took 113 years, contacts with 26 descendant relatives and a 3,000 mile round trip airline flight on a first-time trip to Kansas, but a nearly-forgotten two year-old girl buried in Garnett in 1911 now has a headstone to mark her resting place.

Dana Langworthy, a Seattle, Wash., resident and family historian with ancestral ties to the local area, undertook the quest to mark the little girl's grave earlier this year. She accomplished it Thursday, on a warm breezy day in the Garnett cemetery against a backdrop painted lush green with late summer rains and with a handful of local histo-

rians and area residents in attendance.

Miriam Ada Hesp was the second daughter born to Earl Thomas Hesp and Bertha Belle (Ghormley) Hesp on August 28, 1909. Miriam passed away eighteen months later of smallpox on May 9, 1911, in Hordville, Neb. Her family was from Welda and Garnett, but had recently moved to Hordville to work on the Uriah Bush farm. Merriam was brought back to Kansas for a funeral service at the Garnett United Presbyterian Church and was laid to rest that spring with her family's people in the Garnett cemetery.

After Miriam's funeral service at the United Presbyterian Church in Garnett, she was buried without a headstone next to her great grandpar-



THE ANDERSON COUNTY REVIEW 8-20-2024 / DANE HICKS

Area historians and others attended the dedication ceremony, including from left, Connie Becker, Kansas DAR State Librarian, Four Winds Regent, Judy Carr, Joleata Kent, Henry Roeckers, Kay Roeckers, Dana Langworthy, Seattle DAR, Carla Ewert, Donna Roberts, and Marvin Roberts.

for my father (after the family had moved to Nebraska), and he had smallpox. We two children got it. I recovered, but Miriam did not. She had pneumonia and passed away in May of 1911."

"I can't remember being sick," Dana recalls from her grandmother's writings, "but can vaguely remember her

that was later disproven - piqued in her a compulsion to learn more about the roots that brought her here. "I wanted to know about them and their lives and the challenges they faced," she said.

Fast forwarding through the decades Langworthy's

SEE STONE ON PAGE 7

NEWS IN BRIEF

NEW PUBLICATION DAY

Effective Thursday, Sept. 5, 2024, The Anderson County Review will move from a Tuesday morning publication day to Thursday afternoon. That week's newspaper will be published Sept. 5. The paper will be available on retail racks on Thursday afternoon with mail copies delivered locally in Friday's mail. The paper's electronic version will be available Thursday morning. Deadlines for the new schedule will be 5 p.m. Monday for news and advertising. Call (785) 448-3121 or email review@garnett-ks.com with questions.

AMERICAN LEGION BINGO

Bingo at American Legion Post 48 Garnett will be held every Tuesday, starting time at 6:30 p.m.

KSU AGRONOMY FIELD DAY

The Kansas State Research & Extension will be hosting an Agronomy Ottawa Field Day on Wednesday, August 21 beginning at 9 a.m. It will take place at the East-Central Experimental Field in Ottawa. From 1-35 in Ottawa, go south 1.7 miles on 59 Hwy, east 1 mile and south 0.75 mile.

GRIEF SUPPORT PROGRAM

This 13 week community grief support program is hosted by the Anderson County Ministerial Alliance in cooperation with Anderson County Hospital. This group will meet from 6:30-8:30 p.m. on Thursdays from August 22-November 21 at Anderson County Hospital lunchroom area, 421 S. Maple, Garnett. Register online at www.garnettnazarene.org/ministries/griefshare

AWANA CLUBS

Awana is starting September 4! The mission of Awana is to teach children to know, love, and serve Jesus Christ. Awana clubs are for children from age 3 to 6th grade. Awana meets on Wednesday nights during the school year from 6 to 7:30 p.m. To sign up, visit: <https://www.garnettnazarene.org/ministries/awana>

GARNETT BPW TO HOST HOLIDAY BOUTIQUE DEC. 1

The Garnett BPW is holding their annual Holiday Boutique in conjunction with the Friends of the Library Homes Tour on Sunday, December 1st, the Boutique will be held at the Senior Center. For more information, please call 785-448-8745 or email hnorman59@gmail.com

CORNHOLE TOURNAMENTS

Everything Thursday their will be a cornhole tournament at the Garnett VFW, 1507 S. Elm St. It is a family friendly event open to everyone. Registration begins at 6 p.m., tournament begins at 6:30 p.m. Entry fee is \$15.

UNPLANNED PREGNANCY

Advice & Aid Pregnancy Center in Overland Park helps women and their families make an educated decision about an unplanned pregnancy by providing evidence-based, medical information about parenting, adoption and abortion. Call (913) 962-0200 or visit www.adviceandaid.com.

ANDERSON COUNTY COMMISSION AUGUST 12, 2024

Chairman Leslie McGhee called the meeting of the Anderson County Commission to order at 9:00 AM on August 12, 2024 at the Anderson County Commission Room. Attendance: Leslie McGhee, Present: David Pracht, Present: Anthony Mersman, Present. The pledge of allegiance was recited. Minutes from the previous meeting were approved as presented.

County Budget

Commissioner Pracht moved and Commissioner Mersman seconded to open the meeting for public comment regarding the 2025 budget. All voted yes. No comment. Commissioner Pracht moved and Commissioner Mersman seconded to close the meeting for public comment. All voted yes. Commissioner Mersman moved and Commissioner Pracht seconded to approve the proposed 2025 budget for Anderson County. All voted yes.

Road & Bridge

Ethan Lickteig, Road & Bridge Supervisor, met with the commission. Discussion was held on equipment and replacement schedule. The Commissioners discussed different purchasing options or leasing for equipment.

Economic Development

Jessica Mills, Economic Development Director, met with the commission. She discussed the Garnett Lake Road Project and the grant that has been awarded to the project. The project is short approximately \$60,000 due to curbs that need to be added in a couple places around the lake. She would like to allocate the unused economic development budget for 2024 to the project. The unused funds were from the economic development director position being unfilled for the majority of 2024. The Commissioners declined to use the funds on the project.

Executive Session

Commissioner Pracht moved and Commissioner Mersman seconded to enter executive session for 25 minutes for non-elected personnel. All voted yes. Commissioners; Vernon Valentine, Sheriff; and Julie

Wettstein, County Clerk were present. Commissioner Pracht moved and Commissioner Mersman seconded to enter back into open meeting. All voted yes. No action taken.

SEK Mental Health

Commissioner Mersman moved and Commissioner Pracht seconded to appoint Melanie Wallace to the Southeast Kansas Mental Health board to fill a vacancy for Anderson County. All voted yes.

Adjourn

Meeting adjourned at 12:00 PM due to no further business.

ANDERSON COUNTY LAND TRANSFERS

Esh Rentals LLC to Virginia Shepard: All lot 10 & west 14' lot 9 blk 28 City of Garnett.

Kathy Norris, Kathy Adams Finkenbinder FKA, Terry Norris and Robert Joe Adams to Kyle Wallace Belk and Isabella Barboza-Sanoja: Lots 20 and 21 in block 12 in the City of Garnett.

Dixie A Ramsey to Dixie A Ramsey, Sheila R Defina and Kendrick Easley: Lot 9 blk 50 City of Colony.

ANDERSON COUNTY ACCIDENT REPORTS FILED

On August 3, a vehicle driven by Michael William Kramer, Fort Scott, reentered a vehicle driven by Raelynn Anne Morrison, Westphalia, as she attempted to make a left hand turn onto 1180th Road.

On August 10, a vehicle driven by Leland Ray McGraw, Welda, was eastbound on 300 Road approaching US 169 Hwy when the driver disregarded the stop sign at the intersection causing him to strike a vehicle in the passenger side as it was crossing the intersection which was driven by Jarod Chase Saye, Garland, Texas.

On August 11, a vehicle driven by Vivian Raquel McFadden, Blossom, Texas, was traveling north on US 59 Highway when she struck the rear of a vehicle driven by Douglas Leonard Feuerborn as he was preparing to turn into a driveway.

On August 12, a vehicle driven by Kelby Wade Cox, LeRoy was traveling east on US 58 Hwy when a deer ran from the ditch causing it to be struck by the vehicle.

On August 12, a vehicle driven by Andrew Modlin, Garnett, was traveling south on Missouri Road approaching 1900 Road when the vehicle lost control causing it to spin out and roll over.

On August 13, a vehicle driven by Jaden Denise Loar, Paola, was traveling southbound on US 169 Hwy when the car hydroplaned across the northbound lane of travel and came to rest in the northbound ditch against a fence.

ANDERSON COUNTY CRIMINAL CASES FILED

Michael Scott Peterson has been charged with driving while suspended, possession of marijuana, possession of drug paraphernalia, transporting an open container, no vehicle registration, no vehicle liability insurance.

ANDERSON COUNTY TRAFFIC INCIDENTS FILED

Marlon Alexi Sorto has been charged with speeding 75 mph in a 65 mph zone and attempting to operate a motor vehicle without a valid license.

Brian Wayne Morgan has been charged with speeding 80 mph in a 55 mph zone.

Andrew Harmen Modlin has been charged with basic rule of governing speed of vehicles.

Vivian Raquel McFadden has been charged with following another vehicle too closely.

Jarod Chase Saye has been charged with no vehicle registration.

Delia Ortega has been charged with speeding 77 mph in a 65 mph zone and operating a vehicle without a valid license.

Michael David Ullman has been charged with speeding 80 mph in a 65 mph zone.

Guillermo Altaro Vazquez has been charged with speeding 80 mph in a 65 mph zone.

ANDERSON COUNTY MARRIAGE LICENSE FILED

On August 12, Tanner Scott Lickteig and Kelsey Ann Riley filled out an application for a Marriage License.

On August 16, Billy Ray Foulke and Ariel Joy Parker filled out an application for a Marriage License.

On August 16, Dustin James Hicks and Krystal Jean Earlene Cooper

filled out an application for a Marriage License.

ANDERSON COUNTY JAIL ROSTER (as of August 7, 2024)

Joseph Wilper was booked into jail on October 20, 2023.

Chester Casida was booked into jail on April 5, 2024.

Kevin Labelle was booked into jail on April 25, 2024.

Joshua Caddell was booked into jail on May 12, 2024.

Christopher Mosley was booked into jail on May 22, 2024.

Shawn Harris was booked into jail on May 23, 2024.

Lee Roberts was booked into jail on June 24, 2024.

Jason Boothe was booked into jail on June 26, 2024.

Chad Kammerer was booked into jail on July 5, 2024.

Jeffrey Witt was booked into jail on July 15, 2024.

Stuart Wieland was booked into jail on July 21, 2024.

Avery Brewer was booked into jail on July 23, 2024.

William Vendenberg was booked into jail on July 25, 2024.

Lucas Powell was booked into jail on August 2, 2024.

Russell Hill was booked into jail on August 2, 2024.

Marcos Chaves was booked into jail on August 7, 2024.

ANDERSON COUNTY JAIL FARM-INS (as of August 7, 2024)

Jason Marnell was booked into jail on February 23, 2024.

Julio Guzman was booked into jail on May 21, 2024.

Mayson Paine was booked into jail on June 3, 2024.

James Baber was booked into jail on June 27, 2024.

Rhonda Nicandor was booked into jail on July 22, 2024.

Amelia Murtagh was booked into jail on July 22, 2024.

Sarah Crawford was booked into jail on July 24, 2024.

Timothy Brown was booked into jail on July 26, 2024.

Destiny Peters was booked into jail on August 5, 2024.

VERDICT...

FROM PAGE 1

to push in a garage door, then fired less than lethal rounds in an attempt to incapacitate Chambers. One of those cylinder projectiles struck Chambers in the face but did not detonate. Anderson County Undersheriff Wes McLean testified that he was trying to find a clear shot for lethal rounds at Chambers as the suspect brandished the AR15 at officers before McClain heard the LTL rounds fired by another officer.

Chambers was allowed to bond out of jail the day after the incident.

Aggravated assault against an officer in Kansas is a Level 6 person felony, which can carry a prison sentence of 18 months to four years in prison.

STOVER...

FROM PAGE 1

the Holy Angels and St. John the Baptist parishes in Garnett and Greeley. The notice urged anyone with information about the case to contact the Garnett Police Department.

A bio in catholic newspaper The Leaven said Stover was originally from the Topeka area, graduated from The University of Kansas in 2006 with a degree in English. He joined the priesthood in 2015 and came from a post as parochial vicar of St. Joseph Parish, Shawnee, to pastor of the parishes of Holy Angels, Garnett, and St. John the Baptist, Greeley, with pastoral responsibility for St. Rose Philippine Duchesne School, Garnett, in 2018.

K-State horticulture expert says salad crops favor slightly cooler soils

Got Salad?

Many Kansas gardeners may already know that extending the year's harvest into fall means planting many crops that would make a tasty mix.

"Radishes, spinach, turnips, mustard, lettuce and other leafy greens can be planted from mid-August to early September, extending the harvest into fall," said Cynthia Domenghini, a horticulture expert with K-State Research and Extension.

"If you plan to plant seeds into

the ground, plant them slightly deeper than recommended for spring," Domenghini said. "This will give seeds access to slightly cooler soil that retains more moisture."

Growing a salad garden means providing regular water until the seeds germinate, according to Domenghini. "Sprinkle a light layer of compost over the top of the seeds to prevent the soil from forming a crust," she said.

An alternative way to grow crops suitable for a salad is

to use a bag of potting media. Domenghini outlined steps to grow salad crops in this manner:

- Lay the bag flat and cut it open on the long side, exposing the potting media.

- Place the bag on a pallet or similar support, which will allow you to move the planting, as needed. If not placed on a support, the bag should not be moved after planting to avoid displacing seeds.

- Plant the seeds as recommended on the packet.

- Add fertilizer, if it is not already included in the potting media.

"One benefit of growing fall greens in a potting media bag is the temperature of the media can be regulated by relocating the bag," Domenghini said. "This is particularly helpful during August and September when the heat can hinder germination and negatively affect flavor of certain cole crops."

Domenghini added that due to the limited amount of soil in a potting media bag, it is

important to monitor moisture while the crop is growing.

Domenghini and her colleagues in K-State's Department of Horticulture and Natural Resources produce a weekly Horticulture Newsletter with tips for maintaining home landscapes and gardens.

Interested persons can subscribe to the newsletter, as well as send their garden and yard-related questions to Domenghini at cdom@ksu.edu, or contact your local K-State Research and Extension office.

Three factors that can affect egg production

When it comes to egg production, choosing the right breeds is crucial. Some breeds are known for their prolific egg-laying abilities, such as the Leghorn, Australorp, and Sussex. In addition to selecting the right breeds, there are several other factors that can affect egg production:

Nutrition

A balanced diet is key to maintaining good egg production. Chickens need a constant supply of protein, calcium, and other essential nutrients to

produce eggs. In addition to commercial poultry feed, you can supplement their diet with kitchen scraps, greens, and insects.

Environment

Chickens need a clean, comfortable, and well-ventilated coop to lay eggs. The coop should be free from drafts and have enough space for each chicken to have its own nesting box.

Health

Chickens that are sick or stressed may stop laying eggs.

Ben Yoder, Your Kansas Realtor/Auctioneer

The Kansas Property Place, LLC



Cell/Text (785) 448-4419

Office (785) 448-3999

www.KsPropertyPlace.com

Ben @ KsPropertyPlace.com

501 E. 4th Ave., Garnett, KS



Dutch Country Cafe



\$10.99 ALL YOU CAN EAT

SATURDAY

BREAKFAST BUFFET

7:30 - 11:30 a.m.

SCRAMBLED EGGS • BISCUITS • HOME FRIES • TOMATO GRAVY
COUNTRY GRAVY • PANCAKES • BACON • SAUSAGE PATTIES
HAM • CORNMEAL MUSH • COFFEE CAKE • FRUIT SLUSH

Ages 4-10 - \$7.99 • Children 3 & under - FREE

309 N. Maple • Garnett • dutchcountrycafe.com

Orthopedic Care Close to Home

Bone, muscle, and joint pain can interfere with every part of your daily life. Our board-certified orthopedic specialists can help get you moving again with expert orthopedic care, including:

- Minimally invasive arthroscopic surgery for knees and shoulders
- Carpal tunnel release, ulnar nerve release, and cubital tunnel release
- Shoulder, elbow, and ankle repair
- Fracture care
- Sports medicine and rehabilitation

◆ Learn more
saintlukeskc.org/ACH-Specialty
785-204-8002

 **Anderson County Hospital**
SAINT LUKE'S HEALTH SYSTEM

ENSLEY

JUNE 1, 1938 — AUGUST 17, 2024

Maxine Ensley, age 86, of Colony, Kansas, passed away peacefully on Saturday, August 17, 2024, at her home.



Ensley

She was born on June 1, 1938, in Amity, Arkansas, the youngest daughter of Andy and Mabel (Ring) Nutt. In her younger youth, her family traveled all over the United States to harvest many different crops. At the age of 10, she was working alongside her family in the fields. The harvest went late into the school year, but that didn't keep her from being successful in her classes. Maxine loved her MHS Class of 1957, and attended reunions every year. In her life, she had many different jobs. Maxine ran a chicken catching crew, raised chickens and cattle, operated a Peach Orchard and owned several restaurants. She worked very hard to support her family.

She was a loving mom and grandma, cherished friend, and vibrant soul. Maxine had a great personality and was known for her infectious laughter and warm heart. She had a deep love for her family and treasured spending time with them. Maxine also enjoyed the company of her friends and found joy in their camaraderie. Additionally, she found excitement in trips to the

casino, always savoring those moments of fun and entertainment.

Maxine was married to Winston Cox in 1953. This union was blessed with three children. They later divorced.

In 1983, Maxine married Billy Wayne Stewart. He preceded her in death in 1988.

In 1992, Maxine married Thomas Ensley. He preceded her in death in 2018.

Maxine was preceded in death by her parents; siblings, Carlos Nutt and Carmen Cox; grandson, Derrick Hickey.

Maxine is survived by her children, Larry Cox of Conway, Arkansas, Garry Cox and Janice Steedley (Michael) of Colony, Kansas; grandchildren, Sarah Steedley (Ryan) of Topeka and Erin Clark (Matthew) of Mulvane, Kansas; step children, Randy Stewart (Marla), Bruce Stewart (Paulette), Debbie Abernathy (Elbert) of Kirby, Arkansas; and Rosalee (Stan) Blattner of Hutchinson, Kansas and numerous other family and friends.

A Celebration of Life will be held at 10:30 A.M., Thursday, August 22, 2024, at the Welda Cemetery in Welda, Kansas. Memorial contributions may be made to Colony First Responders and can be left in the care of Feuerborn Family Funeral Service, 219 S. Oak St., Garnett, Kansas. Condolences may be sent to the family at www.feuerbornfuneral.com

More than just a rain gauge

Most of us know how to use a rain gauge, or at least most of us think that we know how. Set it outdoors before a rainfall, check it after the storm has passed, and then tell your friends and neighbors how much fell.

While those may be the basics – if you want to get an “accurate” measurement of precipitation, you probably need to do a little more work.

Madelynn Wuestenberg, agricultural climatology specialist with Iowa State University Extension and Outreach, will explain the best practices for selecting and using a rain gauge at this year's Farm Progress Show, Aug. 27-29 near Boone.

As it turns out, there can be a lot of variability from one gauge to another. Factors such as diameter, length and placement can all have a significant impact on the accuracy of the measurement.

Her display will include different kinds of rain gauges, and she will test participants' knowledge of how to read different gauges. She will also explain how an automated rain gauge works – a more sophisticated device,

which is used to automatically send data to a data logger. This type of rain gauge helps measure total rainfall, as well as rainfall frequency and intensity.

“I will be highlighting how people can become weather reporters and how to correctly read a rain gauge,” said Wuestenberg. “We need citizen scientists to help improve weather predictions and we need to empower individuals that they have the capacity and knowledge to record weather data.”

Community Collaborative Rain, Hail and Snow Network

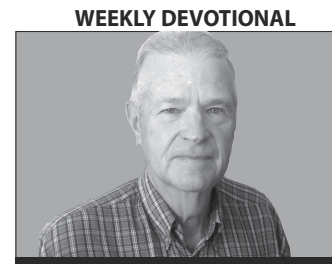
She will give special attention to how rain gauges are used for the CoCoRaHS program, which stands for Community Collaborative Rain, Hail and Snow Network.

The program began in 1987 and encourages the use of low-cost measurement tools, used by trained individuals with the goal of providing high quality data for natural resources, education and research initiatives.

Boundaries or no boundaries

Sometimes to assure our life is headed in the right direction we have to ask ourselves a couple of questions, Question number one is. What is the single most important thing in our life? Now don't get side tracked by some current circumstance affecting you today. What I am referring to is the one thing that we value or care about more than anything else. It may be something you don't want to admit has a grip on your life. It can be found by looking at our bank statement or credit card statement or where we hang out or any number of ways. It is what is most difficult for us to give up. Many times in our life it is the hardest thing for us to control.

This leads us to question number two. How is this desire working out in your life and how is this going to affect you long term. I can tell you what happens to me when I get off track. My perspective gets skewed, I get frustrated, ultimately I can lose my joy. You see a life lived contrary to God's desire for our life is driven by our own preferences. This leaves us at the mercy of whatever circumstances develop from this. As long as our circumstances please us we are



WEEKLY DEVOTIONAL
BY DAVID BILDERBACK

fine, however, if they change so can our mood or disposition. And here comes frustration around the corner to greet us. We then have to work to change our circumstances which can even create more problems for us. Think of all the people you come in contact with daily who are fighting the some type of battle. Sounds like a recipe for problems. So there must be a solution to this dilemma right?

Jesus said in John 14:15, “If you love me you will keep my commandments.” If God is not in control of our life then someone else or something else must be. If we live our life working to keep God's commands we have direction, boundaries let's say. If we don't there are no boundaries. Consider this, if there were no out of bounds in basketball we could have no game. Safe to assume the same can be said about our life.

Obituary charges: Full obituaries are published as submitted in the Review at the rate of 18¢ per word and include a photo at no charge. Abbreviated death notices are published at no charge. A photo may be added to a death notice for a \$10 fee. Payment may be made through your funeral home or directly to the Review.

(785) 448-3121 • review@garnett-ks.com

SPECIALIZING IN QUALITY POST FRAME BUILDINGS



Commercial Equestrian Hobby Shops
Agricultural Garages And More!

Eastern CO 719-822-3052	Nebraska & Iowa 402-426-5022 712-600-2410	Eastern Wisconsin 920-889-0960 Western Wisconsin 608-988-6338	Kansas & Missouri 816-858-7040
-----------------------------------	--	--	--

GINGERICH STRUCTURES www.GingerichStructures.com

good shepherd HOSPICE

YOUR HOMETOWN HOSPICE PROVIDER

(785) 448-6590 427 S. Oak, Garnett, KS 66032

Please don't eat the newspaper. Read it instead.

Subscribe today by calling **(785) 448-3121** or email admin@garnett-ks.com.

Anderson County Area Religious Services Directory

DODD'S REEBLE MEMORIALS MONUMENTS
OTTAWA - IOLA EMPORIA - HOME
785-242-3350
FIND US IN NAMES & NUMBERS

Benjamin Realty
Sissy Benjamin, Broker
Land • Homes • Commercial
201 N. Maple, Garnett, KS 66032
Office: (785) 448-2550
Home: (785) 241-4532
Cell: (785) 384-3029

The Anderson County **Review**
GARNETT PUBLISHING, INC
112 W. SIXTH AVE., GARNETT
(785) 448-3121

Advertise here.
Call **(785) 448-3121**

Advertise here.
Call **(785) 448-3121**

KOFO
103.7 FM • 1220 AM
(785) 242-1220
Country Favorites

Your only locally-owned bank.
Patriots Bank
131 E. 4th Ave • PO Box 327 • Garnett, KS
(785) 448-3191

GRACE & TRUTH BAPTIST CHURCH
Sunday Service 10:00 am
Wednesday 7pm
East 6th & Hwy 169, Garnett, KS
Pastor - Joshua Ford (785) 448-3908

CHURCH OF THE NAZARENE
Sunday Connect Groups 9 am
Sunday Worship Service 10:00am
Bible Studies Sunday 5:30pm
258 W. Park Road, Garnett, Ks.
(785) 448-3208
Lead Pastor - Scott King
Children's Pastor - Sarah Priddy
Teen Pastor -

TRINITY LUTHERAN CHURCH
Sunday School 9am
Sunday Worship 10am
Bible Study - Wednesday 7pm
(785) 448-6930
Hwy 31 & Grant, Garnett, KS

KINCAID SELMA COMMUNITY CHURCH
Worship 9am
Sunday School 10:15 a.m.
709 E. 5th St., Kincaid, KS
Church Office (620) 439-5773

ST. TERESE CATHOLIC CHURCH
Worship Service Saturday 5pm
Richmond, KS
Fr. Gerald Williams
(785) 835-6273

NORTHCOTT CHURCH
Sunday Morning Bible Study 9am
Sunday Worship 10am
12425 SW Barton Rd., Colony, KS 66015
(620) 228-9324

BEACON HOUSE OF WORSHIP
Sunday Worship Service 10:00 am
23031 1750 RD • Garnett
(785) 229-5172

ST. JOHNS CATHOLIC CHURCH
Mass Sunday 8am
Greeley, KS
(785) 448-3846
Pastor Fr. Daniel Stover

COLONY CHRISTIAN CHURCH
Cross Training 9:45am
Sunday Worship 10:45am
306 Maple, Colony, KS 66015
(620) 852-3200
Pastor - Chase Riebel

FIRST CHRISTIAN CHURCH
www.fccgarnett.org
Early Worship 8am
Sunday School (All Ages) 9:15am
Second Worship Service 10:30am
Children's Church 11am
Nursery Provided
Second & Walnut, Garnett, KS
(785) 448-3452
Chris Goetz, Pastor
Zachary Gulick, Youth Coordinator

COLONY COMMUNITY CHURCH
Sunday Worship 9:30am
Sunday School 10:30am
Risen & Rockin' Sunday School Service 10:35am
(620) 852-3237
Colony, KS 66015
Pastor - Steve Bubna

FIRST BAPTIST CHURCH KINCAID
Sunday School 9:30am
Church 10:45am, Eve Worship 7pm
Wednesday Bible Study 7pm
3rd & Osage, Kincaid, KS
(620) 439-5311

UNITED METHODIST CHURCH
Sunday School 9:15 a.m.
Sunday Worship 10:30am
Bible Study Wed. 10am
Chancel Choir Sun 9am
(785) 448-6833
2nd & Oak, Garnett, KS

UNITED METHODIST CHURCH
Sunday School (All Ages) 10:00 am
Sunday Morning Worship 11:00am
116 N. Kalloc, Richmond, KS
(785) 835-6235

WELDA UNITED METHODIST CHURCH
Sunday Church School 9:45am
Church Services & Children's Church 11am
Nursery Available
(785) 448-2358
Welda, KS
Pastor - Bill Nelson

MONT IDA CHURCH
Sunday School 9:30am
Church 10:40am
(785) 448-8042
1300 & Broomall Rd, Welda, KS 66091
From Garnett - 7th St, W 7 miles, S 3 miles
Pastor - Vernon Yoder

KINGDOM HALL OF JEHOVAH'S WITNESSES
Sunday Public Meeting 10am
Sunday Watchtower Study 10:50am
Tuesday Ministry School 7:30pm
Tuesday Service Meeting 8:20pm
Thursday Congregation Book Study 8pm
704 Westgate - Garnett, KS
(785) 448-6755

HOLY ANGELS CATHOLIC CHURCH
Mass: Saturday 5:30pm, Sunday 10am
(785) 448-3846
514 E. 4th, Garnett, KS
Pastor Fr. Daniel Stover

ST. BONIFACE CATHOLIC CHURCH
Sunday Worship 9am
(785) 835-6273
Scipio, KS
Fr. Gerald Williams

ST. TERESA CATHOLIC CHURCH
Westphalia, KS
Mass: Sunday 10 a.m.
Fr. Colin Haganey
(620) 364-5671

NEW LIFE BAPTIST CHURCH
Sunday School 10am
Sunday Worship 11am, 1:30pm
705 S. Westgate (end of 7th St.)
Garnett, KS
(785) 204-1769
Pastor - Chadd Lemaster

ST. PATRICK'S CATHOLIC CHURCH
Emerald (Hwy 31 West of Harris, KS)
Mass: Saturday 4:00 pm
Fr. Colin Haganey
(620) 364-5671

COLONY UNITED METHODIST CHURCH
Church Services 9:30am
Colony, KS
Parsonage (620) 852-3103
Church Office (620) 852-3106
Pastor - Dorothy Welch

LIVING WATERS BIBLE TEMPLE
Sunday School 10am
Sunday Service 11am
305 E. 2nd
Garnett, KS
(785) 221-1594
Pastor - Michael Lobdell



Strong churches make strong communities.
Join a church family in the local area today!

Advertise here.

Call **(785) 448-3121**

SONIC Coca-Cola
Hwy 59 in Garnett, KS
(785) 448-6393 or (785) 448-6494
Call-ins Welcome!

Serving The Area Since 1899
GSSB FDIC
GARNETT STATE SERVICE BANK
Garnett • Colony • Hepler • Ottawa • Pomona • St. Paul • Walnut

Hide from the press, don't appear in public... What is this, a Sharice Davids campaign?

- 1) Don't speak in public without a script, and only in front of vetted fans.
- 2) Avoid unscripted events like parades and debates that allow contact with the raw public.
- 3) Dupe voters into giving you their email and phone contacts through "non-profit" voter registration sites and other means so you can privately spam them with your "message."
- 4) Do not, under any circumstances, submit to an uncontrolled interview with, what in the old days we referred to as, "the press."

If Kamala Harris' critical to-do list for the presidential election after she was shuffled to the front of the Democrat elitist coup that ended Joe Biden's candidacy seems vaguely familiar to voters in Kansas' Third Congressional District, it's because the page was ripped right out of the same book the Democratic National Committee instructed Sharice Davids to follow to the letter. It is a strategy based in political fear of what might happen if the electorate ever had real access to the candidate and demanded publicly that the candidate be accountable for his/her policy.

That strategy has served the Democrat power brokers well in puppeteering the perpetually overwhelmed Davids as the perfect box checker candidate and congressional placeholder vote for the DNC. Davids is tough to beat with her intersectional bona fides as a lesbian Native American liberal representing a district dominated by rich white guilt. The string pullers are convinced the tactic will fly for the heretofore imbecilic but now miraculously reconstituted Harris.

But the bloom is already coming off Harris' plasticized rose.

When this column is published Harris will have been annointed as the Democratic candidate for nearly a solid month, and swing voters are noticing, much to the credit of conservative media and Trump supporters, that she has yet to face any scrutiny from the press whatsoever. Harris's sugar high popularity will peak with the Democratic convention this week, but after that every single day presents pitfalls and threats until the polls close on November 5.

Already Harris' few announced platform planks have scalded mainstream America, which, having endured a border crisis, continued high fuel prices and massive consumer inflation over the past three years of "Bidenomics" is understandably dubious about new injections of fresh-printed government greenbacks into the economy. The Border Czar may not have

REVIEW COMMENTARY



DANE HICKS, Publisher

studied the science of inflation like most high school juniors, because her basket of bribes so far contains copious currency. From her age-old support for "universal basic income" to price controls to easy money \$25,000 payments to first-time home borrowers – Harris promises four years of Christmas if she's elected.

All this – as well as the theft of Trump's plan to ban income taxes on tips – without raising taxes on Americans making less than \$400,000 per year. Even the Communistas at the Washington Post balked at her plan:

"Vice President Kamala Harris's speech Friday was an opportunity to get specific with voters about how a Harris presidency would manage an economy that many feel is not working well for them," the board wrote in an editorial Friday. "Unfortunately, instead of delivering a substantial plan, she squandered the moment on populist gimmicks."

When even the Washington Post calls your plan nothing but honey on a horse pile, well...

There are broad differences of course between the election environment of 2020 and the next 3 months. this time there are no dubious circumstances of a supposed super virus; the disastrous policy which Harris has fully endorsed as second in command has fully and undeniably impacted every American household, and a bevy of online information resources like the Daily Wire, The Federalist have added functional girth to Fox News' Majority audience.

Whether these new information options and the dire policies she's supported will be enough to dislodge Davids from her perch among Johnson County's liberal hand wringers remains to be seen, but the hints of the tsunami headed Harris' way are all ready apparent. It will be a struggle to hold the playbook above the waves. ###



The Anderson County Review's PHONE FORUM

Record your comments on the topic of your choice at (785) 448-2500. You do not need to leave your name. Comments may be published anonymously. Calls may be edited for publication or omitted.

It's not about the service, it's about the lying about the service, thus stolen valor.

We were served up a plagiarist, now we're served up a copycat.

I find it very disheartening that the Anderson County School District has failed to mow the lawn at Westphalia Elementary.

Don't know anything about this drowning of a dog or if it even happened. If it happened of course it's wrong. Being cruel to an animal or to anything degrades your own humanity. But this idea that pets feel the same emotions as you is not scientific. Your dog or cat has a brain that's the size of a chicken egg. Your brain on the other hand weighs three pounds. Your dog or horse or cow or goat or pet mouse is not capable of

understanding like you do or feeling comparable emotions or conscience or right and wrong, no matter how much you project your own emotions on him. Sorry to pop your bubble, but that's just the way it is.

People of Garnett why worry and fret over who is going to be president, who's Democrat who's Republican. You'd better be listening and thinking about your spiritual life. Actually there's nothing yet to be fulfilled until Jesus comes for his church which is the Rapture. We appreciate Pastor Josh's comment so much and encourage him to keep up his talk. Please don't fret over this, fret on your life in the hereafter.

My father was not allowed to enroll in the military because he had an enlarged heart but stayed home and served Civil Defense and served the homeland. That's admirable service too.

The long overdue fixing of Third avenue is great! Keep the street repairs coming. Thank you!

America deserves better than what we've had the past 3 1/2 years and it's up to you to vote for change. We can't survive with more Biden Harris or Biden/Walz policies that rob our pocketbooks and savings to impress their leftist agendas.

Contact your elected leadership:

President Joseph Biden
The White House
1600 Pennsylvania Avenue NW
Washington, DC 20500
(202) 456-1111

Governor Laura Kelly
300 SW 10th Ave #241s,
Topeka, KS 66612
(785) 296-3232
email form:
www.governor.kansas.gov

Senator Roger Marshall
Russell Senate Office Building
Washington, D.C., 20510
(202) 224-4774

Senator Jerry Moran
2202 Rayburn House Office Building
Washington, D.C., 20510
(202) 224-6521

3rd Dist. Congressman Sharice Davids
1541 Longworth House Office Bldg.
Washington, D.C., 20515
(202) 225-2865

12 Dist. Sen. Caryn Tyson
300 SW 10th St. Rm 236-E
Topeka, Ks. 66612 (785) 296-6838
P.O. Box 191 Parker, Ks. 66072
(913) 898-2366
caryn.tyson@senate.ks.gov

9th Dist. Rep Fred Gardner
State Capitol Room 512-N
Topeka, KS 66612
Office: (785) 296-7451
fred.gardner@house.ks.gov

Congress shall make no law respecting an establishment of religion, or prohibiting the free exercise thereof; or abridging the freedom of speech, or of the press; or the right of the people peaceably to assemble, and to petition the Government for a redress of grievances.

Finance reports prove Kelly's "middle" PAC is a lie

Contrary to its name, Kansas Governor Laura Kelly's "Middle Of The Road" Political Action Committee received no funding from 'moderate' donors and directs its financial support only to Leftist, Progressive candidates aiming to unseat conservatives and complicit Democrats and weaken their influence, primarily in the Kansas Legislature.

In the modern age of misinformation and disinformation, Kelly's PAC is a prime definition. A recent review of legally required financial reports submitted by Kelly's PAC reveals just who donated funds to it after the governor announced the effort a year ago, and who has been the beneficiary of its pass-through progressive supporting cash.

Kelly claims the mission of this PAC is "to elect moderate, middle-of-the-road leaders who are laser-focused on supporting policies to improve the lives of all Kansans."

But Gov. Kelly's progressive views aren't shared by many outside the liberal bastions of the state's college towns and urban centers, and if Republican control of the Legislature is any measure, certainly not by a majority of Kansans.

Kelly's progressive policies are left, far-left, or progressive by most all definitions. She was narrowly re-elected in 2022 only with the independent expenditures of nearly \$20 million in dark money through a nonprofit, which is not well-known.

Gov. Kelly fully understands the words "Middle of the Road" are a stretch for her views, yet she uses the term regardless of the misin-

KANSAS COMMENTARY



EARL F. GLYNN, WATCHDOG LAB

formation it conceals. In fact Kelly is intolerant of those who challenge her views. The expenditures section below reveals how Kelly, in the primary election campaign, recently "took out" two of her fellow Democrats who challenged her policies.

Technically, Gov. Kelly does not "own" this PAC. Her name does not appear on official PAC documents. But Gov. Kelly has direct or indirect connections to those spending the PAC money, which will be shown below.

Kansas PACs were required to file "Receipts and Expenditures" reports on July 29, prior to the Aug. primary election. An earlier Watchdog article rank ordered 171 Kansas PACs on money raised, spent and in the bank. The Middle of the Road PAC was #1 in money raised statewide (\$287,825) and #1 in money in the bank (\$935,162). Its third place rank in money spent (\$243,271)

before the primary still resulted in an overall #1 ranking for this PAC statewide. The list of those who contributed to MOTR as well as its expenditures reveals the political flavor of the organization.

This PAC's Statement of Organization shows former three-term Kansas State Rep Sheryl Spalding is the PAC chair and treasurer. Ballotpedia reveals Spalding was the former president of the Blue Valley Board of Education in Johnson County. Ballotpedia says Spalding refused in 2008 to take the Project Vote Smart's "Political Courage Test," which asked candidates: "Are you willing to tell citizens your positions on the issues you will most likely face on their behalf?"

Spalding's name appears on all official reports, but Gov. Kelly's name or "Team Kelly" has appeared on perhaps a dozen email solicitations for the PAC. The diagram below shows the major PAC donors reported in the Jan. or July PAC reports.

- July 2024 report shows these donations:
 - \$100,000 from Jobs and Opportunity Super PAC, Washington, DC. In May 2024 the Democratic Governors Association (now headed by Laura Kelly) sent \$275,000 to Jobs and Opportunity. Two months later Jobs and Opportunity sent \$100,000 to Kelly's Middle of the Road PAC.
 - \$10,000 from Cathy Matlack, Leawood, KS. Board member of Mainstream Coalition in 2022. Contributed \$5,000 to Kansas Democratic Party

SEE GLYNN ON PAGE 12

For Trump, the case against Kamala Harris does not make itself

Joe Biden made Donald Trump feel fresh and vital. No matter how commonplace Trump's tropes and mode of campaigning had become, they seemed compelling compared to the bleached-out president of the United States who had become a shell of himself.

With the Trump-Biden contrast no longer relevant, the former president is operating in a new, much less forgiving environment. Kamala Harris wants to run a youth vs. age and future vs. past campaign against Trump, and she has some chance of making it work.

Against Biden, Trump represented the past, but also change. Against Harris, he's potentially just the past.

It's not "old" as a matter of age that's the issue, although all those concerns are now about Trump. Ronald Reagan was old when he took office, but was offering a complete change of direction in policy and exuded a youthful optimism and self-confident patriotism. The problem for Trump is "old" as a matter of feeling familiar, tired and played out.

The Mar-a-Lago press conference last week was a typical, nay, stereotypical, Trump event -- Trump looked commanding against a vivid backdrop of American flags, but how many times have we seen that image?

He was a bit of everything -- on message and off message, confident and defensive, charming and insulting, and so it went. Again, how many times have we watched it?

Even Trump's outrages aren't that surprising. That he went with the "Kamala suddenly became black" line of attack wasn't exactly predictable, but nor is this kind of thing unexpected. And, of course, we've repeatedly expe-

NATIONAL COMMENTARY



RICH LOWRY, King Features Syndicate

rienced cycles of hope for a new, more disciplined candidate dashed by Trump's insistence on doing it his way.

Again, none of this mattered so much against a doddering 81-year-old man who a vast majority of the public thought incapable of serving another four years. Biden was the past in everything he said and did.

For her part, Kamala Harris may not really be hip, but she is hipper than Trump. She's certainly energetic enough for a full slate of campaigning, and she's presenting herself as a third force: neither Biden nor Trump, a politician with an entirely new "vibe."

Harris has another advantage. It wasn't truly possible to cover up Biden's weakness. Even if Biden wasn't doing many interviews, he had to be out in public -- at international meetings, at White House events and the like. No matter how much the Democrats insisted everything was OK, he could be seen stumbling, wandering and

losing his train of thought.

With Harris, Republicans might (for good reason) say that she will lose herself in word-salad incoherence upon her first contact with a challenging interview, but there is no way to establish it without such an interview. On the teleprompter, she seems just fine. She's pointed, amusing, determined and lifted by enthusiastic crowds.

Most importantly, Trump was winning a change election against Joe Biden. Now, he's essentially tied with Harris on who will bring positive change. The new CNBC poll had Harris at 39% on this question and Trump at 38%.

There is plenty for Trump to work with to pull ahead on this metric. People remember his record in office more or less fondly, and Harris has been an integral part of a failed administration and now embraces almost all of Biden's policies.

This isn't a case that makes itself, though. It's not enough simply not to be Kamala Harris, the way it was not to be Joe Biden.

Trump is going to have to make focused attacks that break through and aren't lost in the haze of pointless controversies. This presents a tactical question: If the choice is between an overly controlled candidate who is relentlessly on message and an ill-disciplined candidate who is off message, is it clear that the former (Harris) is worse than the latter (Trump)?

Trump has a new challenge -- his opponent is no longer an aged incumbent president who has worn out his welcome.

Rich Lowry is editor of the National Review.

FORMERLY THE GARNETT PLAINDEALER, THE ANDERSON COUNTY REPUBLICAN, THE REPUBLICAN-PLAINDEALER, THE GARNETT JOURNAL PLAINDEALER, THE GARNETT EVENING REVIEW, THE GARNETT REVIEW, THE GREELEY GRAPHIC, THE ANDERSON COUNTEAN.

The Anderson County Review

GAROLD DANE HICKS, PUBLISHER

Published each Tuesday by Garnett Publishing, Inc., and entered as Periodicals Class mail at Garnett, Ks, 66032, permit number 214-200.

POSTMASTER: Please send address corrections to: THE ANDERSON COUNTY REVIEW 112 W. 6th Ave. • P.O. Box 409 • Garnett, KS 66032 (785) 448-3121 • review@garnett-ks.com

Copyright Garnett Publishing, Inc., 2023

Belt buckle, horseshoe and ?

Slowly but surely, I'm running out of photos of artifacts found out on the old farm site. I'm still finding a few items, but they sure are getting to be few and far between. At least I'm finding a few items that aren't parts of old farm machinery. However, I'm still finding unidentified artifacts just about every time out to this site. As a matter of fact one of this week's photos is one I need help in identifying.

#1 - I'm not sure whether this brass buckle with iron tongue was used as a regular belt buckle or is from a horse harness.

#2 - You guessed it. This is this week's mystery artifact. I

DIGGING UP THE PAST

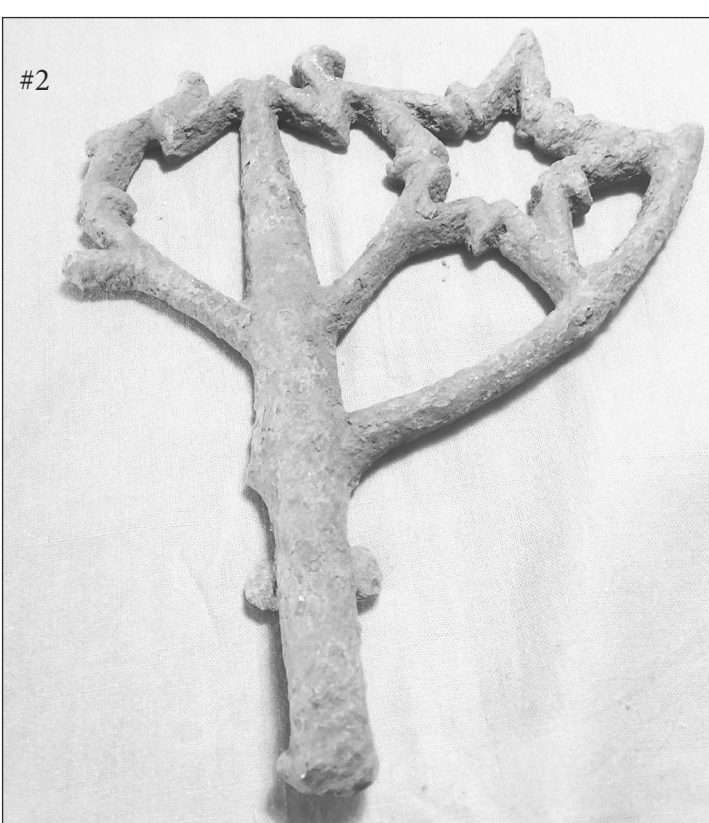
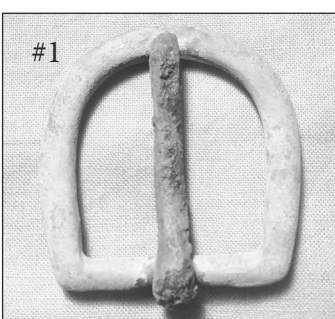


Henry Roeckers
Call (785) 504-4722 for local archeology information.

absolutely have no idea what it is or was used for. Too bad its damaged.

#3 - Of course it's a horseshoe? I've been told it's for a very large work horse, not a driving horse.

Respectfully submitted by: Henry Roeckers. 13August2024



MAKE MONEY.

USE THE CLASSIFIEDS!!

10 years ago...GFD seeks upwards of \$1 million for new truck

Sixty years ago, Aug. 1964

Motorists traveling at excessive speeds on highways in Anderson County over the past weekend were stopped by the Highway Patrol's radar equipment. Next Monday night, August 24, the Lions Club will host the Garnett High School Football squad at the annual watermelon feed to be held at the fair building at the city park. The feed will begin at 7:30, and the speaker for the evening will be "Duke" Neff, special promotional agent for the Kansas City Chiefs. Negotiations that had been in progress for about a month were completed this week, and Mr. and Mrs. Robert Blubaugh became the owners of the Hotel Richert in Garnett. "Cap" and Mrs. Richert took over ownership of the hotel in April 1946, completely renovating and remodeling the interior and stuccoing the exterior.

Fifty years ago, Aug. 1974

The enormous tasks of cleaning up the city began nearly immediately after a storm on Saturday evening. City crews were out and worked for more than a day, attempting to restore electricity. Many rural residents did not have electric service on Tuesday. The city of Welda was without electricity and water since power lines were down to the Santa Fe Lake, where water is pumped from. The losses to rural Anderson County have been assessed and are pretty serious. The Rural Development Committee, composed of Maury Harrington, Joe McKerracher, and Leo Widerholt, Jr, called a special meeting to review the storm damage. Jack Ball and Diane Dudney were named 4-H King and Queen in ceremonies at the stadium before the Anderson County Fair parade held Monday night. Ball and Mss Dudney were crowned by last year's King and Queen, Gary

THAT WAS THEN



Chelsey D'Albini
Send historic photos, information to review@garnett-ks.com

Holloway and Nancy Lickteig.

Forty years ago, Aug. 1984

A new welding and auto repair shop is open in Garnett; Don Wettstein, a native of Pittsburg, moved here during the past month and opened a welding and auto repair shop at 628 S Oak Street. Wettstein has more than 18 years of experience in his trade and specializes in welding customized trailers. The town of Richmond will soon have a new water treatment plant. The plant is adjacent to Richmond's old plant, which has become minimally serviceable. The Anderson County Hospital Board of Trustees met Thursday to decide on the Hospital's kitchen facilities. The decisions reached were that the kitchen would need renovation sooner rather than later to improve patient care. The Garnett Street Maintenance Department is patching/repairing those streets that need first attention for upkeep. Since Monday, the repair crew has been working and moving west on Fourth Avenue from the downtown area.

Thirty years ago, Aug. 1994

The Tenth Circuit United States Court of Appeals ruled on August 8 that several cities in Kansas and Oklahoma, including Garnett, will not be reimbursed for legal fees paid to attorneys who represented them in a suit filed in 1987 against William Natural Gas

Company. The cities had sued WNGC to force the gas company to open its pipelines to outside natural gas suppliers. WNGC was the only pipeline supplying the towns, and officials in those cities wanted to be able to receive bids on natural gas from other sources. Dianne Rogers says that teaching comes full circle, as, in the course of teaching, it becomes possible that a single teacher becomes generational as they begin teaching the children of previous students. Rogers says her current position as the program lead of "Parents as Teachers" has made that even more generational as she teaches the same students she trained as a Kindergarten teacher in Garnett. The program is aimed at helping good parents become better by providing insight into the developmental parts of childhood and child-rearing.

Twenty years ago, Aug. 2004

A house divided can stand, or at least in the case of Duane "Mike" Eyman and his daughter, Caren Rugg. They are Both outspoken and active in politics, but the conversations they share on the subject are sure to be just as lively. That's because Mike is the chairman of the Anderson County Republican Party, and Caren is the chairperson of the Franklin County Democratic Party. The pair said they couldn't remember when they had similar political views, but that doesn't change how they care for each other. The winner of the Democratic primary for the 12th District Kansas Senate race had no yard signs, no political ads, attended no candidate forums and didn't even vote for himself. At the close of the primary election, he had beaten Ottawa realtor Cal Lantis for the right to be Louisburg's Pat Apple in the November elec-

tion. Tim Shields didn't even file for office until the last day. He vowed not to spend more than \$500 in the election, so there were no signs, bumper stickers, or advertising.

Ten years ago, Aug. 2014

Fire department leaders approached the City Commissioners last week about replacing a ladder truck that had been a money pit since it was purchased in used condition several years ago. Recent problems included a fire on the truck caused by a leaking hydraulic hose. The truck needs a new generator and repairs to its pumping system for about \$15,000. Instead of throwing money after bad to repeatedly fix the truck, fire department official Dave Fairies asked city commissioners to consider buying a new truck, and by "new truck," he meant a brand new truck rather than purchasing a used truck as the department had done previously. Fairies said a new truck could last the department about 25 years rather than needing to replace used trucks every five or six years. This post of a new truck is a staggering \$500,000 to \$1 million. City parks-specifically Cedar Valley Reservoir-could soon match the rest of the town regarding ATVs, three and four-wheelers, and other non-highway vehicles at city parks. The current ordinance allows such vehicles with a permit, but it is at odds with other city rules that allow some types of non-highway cars, like golf carts and side-by-side vehicles. In recent years, city leaders have changed the rules to allow those vehicles on city streets, but not on highways, if driven by a licensed driver. ATVs are not permitted on city streets, which could also change.

RULING...

FROM PAGE 1

school and collegiate level.

It took Kansas legislators three attempts to override Governor Laura Kelly's vetoes of bills aimed at banning men from women's high school and collegiate sports and facilities in Kansas. The law went into effect July 1, 2023.

Representative Marvin

Robinson, a Democrat from Kansas City, was the deciding vote in the Kansas ban. Robinson was defeated by Wanda Brownlee Paige in the primary vote in District 35 in the August primary.

The ruling against the administration's transgender policies followed a win for Kansas, Alaska, Utah and Wyoming attorneys general

who pushed back on Biden/Harris Title IX changes early in July, when a federal judge in Kansas stayed the implementation of the federal rule change. Kansas Attorney General Kris Kobach said it was the biggest win yet for the effort to protect women's privacy and sporting competitions.

"Given... the evidence before the court, it is not

hard to imagine that, under the Final Rule, an industrious older teenage boy may simply claim to identify as a female to gain access to the girls' showers, dressing rooms, or locker rooms so that he can observe his female peers disrobe and shower," federal judge John Broomes wrote in the order.

OPEN FOR BUSINESS

A directory of Anderson County area businesses ready to serve you!

Millers Construction, Inc.
Since 1980
Delden Doors & Openers

- We sell & service these brands & more.

Call for quotes & details.

Everett Miller • (785) 448-6788 Rodney Miller • (785) 448-3085

On-the-Farm Service • Alignments

GARNETT, KS

601 South Oak
Garnett, Kansas
(785) 448-3212

Cooper • Jetzon • Kumho

Just 8 bucks a block per week to list your business here!

Quality Matters

ADAMSON BROS
Heating & Cooling
www.adamsonbros.com
785-242-9273
102 S. Walnut
Ottawa, KS

Miller's Fencing & Welding

Specializing in
barbed wire
fence
& corrals

Aaron Miller
(785) 433-3878

AUBURN PHARMACY

(785) 448-6122
429 N. Maple • Next to Country Mart

Reliable, Dependable, Consistent
Always There - Always Caring

Howard Yoder
Owner-Operator
2246B NW Indiana Rd • Welda, KS
(785) 489-2212

Inspected Facility

Hours:
MONDAY Slaughter Day
TUESDAY-FRIDAY 8:00 a.m. - 6:00 p.m.
SATURDAY 8:00 a.m. - 12:00 p.m.
SUNDAY Closed

Heck's Moving Service

Furniture • Appliances • Garage etc.

Ashton Heck
(785) 204-0369

E-Statements & Online Banking

Garnett • Colony • Hepler
Ottawa • Pomona •
St. Paul • Walnut

YCS
YUTZY Custom Structures
1-800-823-8609
Post Frame Construction
Residential Slab Homes
www.yutzycustomstructures.com

PRINTING

Garnett Publishing, Inc. • (785) 448-3121
review@garnett-ks.com

CEGAR VALLEY METAL SUPPLY

- Building Packages
- Windows & Doors

Manufacturers of
Metal Panels & Trim
Garnett • (785) 448-1614

Prairie Lane Painting

Residential
interior & exterior

Locally owned.

(785) 591-0840

AL'S DOOR CO.

Service • Sales • Installation • Repairs
Garage Doors & Openers
242 E. 5th, Garnett
(785) 248-9800
albrandes@alsdoorcompany.com

Thrift and necessity drive the farm

There's no shortage of jokes about farmers and ranchers asking for a discount or inquiring if a free hat can be included with a purchase. My grandfather once told me, "It never hurts to ask — the worst they can tell you is 'No'."

Whether frugal out of necessity or mere habit, the thrift of farmers and ranchers provides plenty of innovation for inexpensive materials. The main corral at the ranch was built with used pipe and cable from a nearby oilfield. Drilling pipe and pump rods were the raw materials that made up most of the gates as well.

One of my first real jobs on the ranch was painting what seemed to be miles of rusty metal. We'd go to the hardware store for a couple gallons of the cheapest oil-based aluminum paint available then thin it down with turpentine. My grandmother crafted crude mittens out of a fleece material we used to guide the paint over the curved surface of the pipe to turn it a shining silver and prevent further corrosion.

Just about every building was crafted and maintained in the same fashion. The house, garage and barn were built with limestone quarried onsite. A haybarn was later built similarly to today's pole barns, only the trusses, purlins and girts were pipe. The corrugated metal was attached with nails spotwelded to the pipe. When the galvanized coating weathered away, the roofs and sides also got a coat of alumi-



GREG DOERING, KANSAS FARM BUREAU

KANSAS COMMENTARY

mon storage solution on many operations. Using native material also has a long history on farms, some examples like stone fences are easily visible from the road. Before barbed wire, dry stone walls were common ways to mark a property line or keep in livestock. I encourage everyone to examine one up close at least once in their life to see how something can look simple from a distance but be incredibly intricate up close. There's no mortar or adhesive other than the weight of the stones artfully stacked in an interlocking fashion. They're more than 100 years old in most of Kansas while others around the world have stood for thousands of years.

With some sweat and ingenuity, farmers and ranchers will find a use for just about everything. From turning old tires into livestock waters or making compost in a chemical tote, the number of repurposed items on farms grows out of thrift and necessity.

"Insight" is a weekly column published by Kansas Farm Bureau, the state's largest farm organization whose mission is to strengthen agriculture and the lives of Kansans through advocacy, education and service.

num paint.

All of these were built primarily for their utility rather than aesthetics, though they're all charming in their own way. As time and markets allowed, most received upgrades in addition to the occasional coat of paint over the years. The house had an addition, the garage got new doors, and new tin was placed on the gable ends of the barn, but they remained rustic remnants of the materials readily available when they were constructed.

There's evidence of similar resourcefulness on farms and ranches everywhere. If your land was close to a railyard, odds are good there's been a boxcar or two offering storage at some point. In some places, retired boxcars served as makeshift barns or chicken coops and deteriorated to nothing.

On other farms, the boxcars went on foundations and are still storing items or they've been enveloped by a series of expansions to comprise a tiny portion of a larger structure. The modern equivalent is the thousands of shipping containers that have become a com-

Place your ad in the Review
review@garnett-ks.com

Concert in the Park series to kick off in September

Love What's Local will once again be presenting Concerts in the Park series beginning September 5th.

The performances will take place on Thursdays from 6 p.m.

to 8 p.m. at the Donna Harris Park in downtown Garnett. Bring your own lawnchair.

On September 5th, Toddy's Jam Band will provide the live music.

The following week, September 12th, it will be Hunter Crane, on September 19th it will be Trevor Holman and on September 26th Adam Caylor will perform.

Visit Miami County!

These Miami County businesses appreciate your patronage and encourage you to visit your local merchants in Miami County!

THE TRADING POST

25,000 customers read us EVERY WEEK just for your ads!

(785) 842-6440 • (800) 683-4505
ads@tradingpostdeals.com

PARK PLAZA LIQUOR

ESTABLISHED 1958

COLDEST BEER IN TOWN

1403 Baptiste Dr. PAOLA • 913-557-5600

M-Sat 9am-11pm
Sun Noon-8pm

Our wine selection is unsurpassed!

To advertise your business here
contact Stacey at (785) 448-3121.

Family service from one of Garnett's own hometown families!

MIDWEST COLLISION INC.

31570 Old KC Rd. • PAOLA • (913) 294-4016

Advertise.
Call (785) 448-3121 or email review@garnett-ks.com

GET IT DONE



For professional help on your home or work project, look to these quality local contractors who are anxious to help.

GUTTERING

LACO GUTTERING
Seamless Gutting • Over 30 Colors
Underground Drainage Systems
Aluminum • Steel • Copper
1-800-432-8891
cell (620) 363-4327

ELECTRICAL

PERFORMANCE ELECTRIC SOLUTIONS
206 North Oak • Ottawa, KS • (785) 242-5748
www.performance-electric.com
A complete residential electrical service company
• Rural Electrical Service
• Transfer Switch & Generator Connection
• Bucket Truck
7-Block Certified Licensed Electricians
Bonded • Insured
Free Estimates
Quality Service For Over 20 Years.
Serving Anderson & Franklin Counties.

CONSTRUCTION

GARAGES • HOBBY SHOPS AGRICULTURAL • EQUESTRIAN

QSI
Quality Structures
Richmond, KS
Specializing in Complete Post Frame Buildings
Monday-Friday 8am-5pm
785-835-6100
QualityStructures.com

TRUSS SUPPLIERS

Parker Truss & Stuff
Your #1 Wood Truss Manufacturer
Rod & Pam Clinton
(913) 898-2775

GLASS

SINCE 1945
SUFFRON GLASS
425 Walnut • Ottawa, KS (785) 242-2515
Glass & Aluminum Products
Automotive • Residential • Commercial

BLDG. MATERIALS

Construction Supply
Contractors, Residential & Farm
Garnett Home Center & Rental
410 N. Maple
Garnett, KS
785-448-7106
Do it Best

Edgecomb Builders

GENERAL CONTRACTOR
Custom Homes • Additions
Finishing Trimwork
OFFICE: (785) 448-2368
CELL: (785) 204-1580
Lonnie Edgecomb

DIVERSIFIED CONTRACTING LLC

"We build on quality."
Commercial • Residential • Agriculture
Track Hoe • Backhoe • Dump Truck • Trenching • Rock Removal
Track Loader • Black Dirt • Electrical (Block Master)
913-898-4722 Mike Page - Parker, Kansas

GAS • PROPANE

SEK COOP

All your propane needs.
(620) 625-3151

FLOORING

Johnathan Edgecomb • (785) 448-3899
SAVE 40% off regular retail pricing on name brand flooring.
EDGECOMB FLOORING
SALES & INSTALLATION
FREE in-home consultation with our MOBILE SHOWROOM!
CARPET • TILE • VINYL
HARDWOODS • LAMINATE

ALL THE MATERIALS YOU NEED FOR YOUR HOME PROJECT!

7am-5pm Mon-Fri / Sat 7am-Noon
THE NEW KLEIN LUMBER
201 W. MADISON • IOLA • (620) 365-2201

HEATING & AC

Quality Matters

ADAMSON BROS
Heating & Cooling
785-242-9273
102 S. Walnut
Ottawa, KS 66067

SEPTIC, ETC.

D&S Sanitation LLC
Septic Tank Pumping & Holding Tanks • Inspections
Brian Falk (785) 241-4803
Reliable Service • Available 7 Days A Week • Residential & Commercial
Licensed in Anderson, Franklin, Colley, Miami, Osage, Linn & Douglas Counties

ROOFING

QSI
Quality Structures
Richmond, KS
Specializing in Complete Post Frame Buildings
Monday-Friday 8am-5pm
785-214-4647
QualityStructures.com

DON'T SEE YOUR CATEGORY?
Have us designate it when you place your ad

GARAGE DOORS

AL'S DOOR CO.
Service • Sales • Installation • Repairs
Garage Doors & Openers
242 E. 5th, Garnett
(785) 248-9800
albrandes@alsdoorcompany.com

LIME/LIMESTONE

CRUSHED LIMESTONE PRODUCTS
Whitaker Aggregates
(Garnett Quarry, 4 mi. north of Garnett)
(785) 448-2600 • cell (620) 664-7449
7:30am-5pm Monday thru Friday

SIDING & WINDOWS

ANDY'S SIDING COMPANY
(785) 242-6939
2340 S. Princeton
Ottawa, Kansas
Vinyl, Steel & Aluminum Siding
Vinyl Replacement Windows
Lifetime Warranty
FREE Estimates
Serving the area for over 50 years.

DON'T SEE YOUR CATEGORY?
Have us designate it when you place your ad

Place your ad here.
(785) 448-3121

Place your ad here.
(785) 448-3121

CALENDAR

Tuesday, August 20, 2024
 10:00 a.m. - Storytime For Preschoolers
 12:00 p.m. - Rotary International Club Meeting
 5:00 p.m. - Anderson County Economic Development Meeting
 5:30 p.m. - BPW Meeting
 5:30 p.m. - PM Yoga
 6:00 p.m. - Planning Commission Meeting
 6:30 p.m. - American Legion Bingo
 7:00 p.m. - Alcoholics Anonymous

Wednesday, August 21, 2024
 8:45 a.m. - AM Yoga
 1:00 p.m. - Duplicate Bridge
 4:00 p.m. - Walker Art Committee
 7:00 p.m. - Garnett Senior Center Board Meeting

Thursday, August 22, 2024
 2:00 p.m. - Emergency Food Assistance Program (Harvesters)
 4:30 p.m. - Garnett Farmer's Market
 5:30 p.m. - PM Yoga
 6:00 p.m. - 13-Point Pitch & Snacks
 6:30 p.m. - Garnett VFW Cornhole Tournament
 7:00 p.m. - Alcoholics Anonymous

Friday, August 23, 2024
 8:45 a.m. - AM Yoga

Monday, August 26, 2024
 8:45 a.m. - AM Yoga
 9:00 a.m. - Anderson County Commission Meeting
 5:30 p.m. - TOPS Meeting
 6:00 p.m. - Celebrate Recovery
 6:00 p.m. - Hot Yoga with Jenelle

Tuesday, August 27, 2024
 10:00 a.m. - Storytime For Preschoolers
 12:00 p.m. - Rotary International Club Meeting
 5:30 p.m. - PM Yoga
 6:00 p.m. - City Commission Mtg
 6:30 p.m. - American Legion Bingo
 7:00 p.m. - Alcoholics Anonymous

Wednesday, August 28, 2024
 8:45 a.m. - AM Yoga
 1:00 p.m. - Duplicate Bridge

Thursday, August 29, 2024
 5:30 p.m. - PM Yoga
 6:00 p.m. - 13-Point Pitch & Snacks
 7:00 p.m. - Alcoholics Anonymous

Friday, August 30, 2024
 8:45 a.m. - AM Yoga

Monday, September 2, 2024
 8:00 a.m. - Movement Mondays - Fitness Court
 8:45 a.m. - AM Yoga
 9:00 a.m. - Anderson County Commission Meeting
 4:00 p.m. - Greeley PTO
 5:30 p.m. - TOPS Meeting
 6:00 p.m. - Celebrate Recovery
 6:00 p.m. - Garnett Lions Club Meeting
 6:00 p.m. - Hot Yoga with Jenelle
 7:30 p.m. - Kincaid Masonic Lodge No. 338 Meeting

Tuesday, September 3, 2024
 10:00 a.m. - Storytime For Preschoolers
 12:00 p.m. - Rotary International Club Meeting
 5:30 p.m. - Garnett Community Foundation Board Meeting
 5:30 p.m. - PM Yoga
 6:30 p.m. - American Legion Bingo
 7:00 p.m. - Alcoholics Anonymous

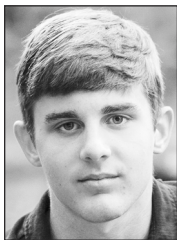
Wednesday, September 4, 2024
 8:45 a.m. - AM Yoga
 1:00 p.m. - Duplicate Bridge
 3:30 p.m. - Tinkering & Tech hosted by the Garnett Public Library
 5:30 p.m. - Bulldog Booster Club Meeting
 5:30 p.m. - Garnett Elementary Site Council
 6:00 p.m. - GES PTO Meeting
 7:00 p.m. - Colony Lions Club Meeting
 7:00 p.m. - Kincaid Lions Club Meeting

Thursday, September 5, 2024
 5:30 p.m. - PM Yoga
 6:00 p.m. - 13-Point Pitch & Snacks
 6:30 p.m. - USD 365 Endowment Association
 7:00 p.m. - Alcoholics Anonymous
 7:00 p.m. - USD 365 Board of Education Meeting

Area students awarded 4-H scholarships



Corley



Kraft



Morrow



Witherspoon



Calley

Hershyl Corley is the son of Gaylon and Heather Corley and was a member of Lucky 13 4-H Club for 11 years. Hershyl participated in the geology project every year and showed his collections at the Kansas State Fair for 8 years. He attended the state geology field trip for 10 years and served as a junior leader for 4 years. At Anderson County High School, Hershyl was a member of Family Career, and Community Leaders of America; his presentation on Adverse Childhood Experiences qualified for national FCCLA competition. He also participated in cross country and the eSports club. Hershyl will attend Coffeyville Community College this fall on an eSports scholarship. He plans to study nursing. Regarding his 4-H experience Hershyl said, "4-H was a good learning experience and helped me practice taking on responsibilities. Being involved in 4-H was a great start to leadership skills that will benefit me for the rest of my life, whether in my career or personal life."

Landon Kraft is the son of Amos and Krista Kraft and the late Tyler Kraft. Landon was a member of Stringtown Bombers 4-H Club in Coffey County for 7 years. After moving to Garnett, he joined Start Shooting 4-H Club and was a member for 4 years. Landon served as vice president, reporter, historian, and parliamentarian in his 4-H years. During his high school

years, Landon was involved in many sports, with cross country and track being his top favorites. Landon will attend Allen Community College this fall to study pre-engineering. He plans to transfer to K-State to complete his engineering degree. Landon's advice to 4-Hers is "Try new projects; it's ok if you don't like each one, but you'll never regret learning about something new."

Taryn Morrow is the daughter of Jennifer Bunnell and TJ Morrow. Taryn was a member of Star Shooting 4-H Club for 12 years. She served as the historian and reporter of her club, as well as Jr. Dairy project leader. Taryn will attend K-State where she is planning to major in kinesiology and dance while on a dance scholarship with the K-State Dance program. In high school, Taryn was involved in Dance Team, FFA and the D&D Diamond Dancers competitive dance team. The highlight of Taryn's 4-H career was being the only dairy cattle exhibitor for many of the years she was in 4-H. Taryn's advice to younger 4-H members is to always keep your head held high!

Reagan Witherspoon is the daughter of Gina and Adam Witherspoon. Reagan was a member of Cherry Mound 4-H for 10 years, and she served as Cherry Mound's secretary, treasurer, historian, and reporter throughout the years. She also helped the fair board office get ready for the fair by

assisting with entries, organizing awards and making sure all were there, and assisting with judging days. She helped with whatever was needed. Reagan will attend Neosho County Community College this fall to do her prerequisites for nursing and then transfer to Labette County Community College to receive her bachelor of science degree in nursing (BSN). When asked to talk about her 4-H experience, Reagan said, "I believe that every year, being involved in 4-H has expanded my growth in new experiences and skills that I will use for a lifetime. It has also given me the opportunity to find true friends and leaders that have helped me to be the person I am today."

Ronin Calley is the son of Tara and Gunner Calley. Ronin was a member of Star Shooting 4-H Club then Dynamite 4-H Club for a total of 12 years. Ronin served as club representative on the Anderson County 4-H Council, along with serving as Dynamite's president, vice president, treasurer, and recreation leader throughout the years. Ronin received the Key Award in 2023 and will attend Neosho County Community College this fall. When asked about his 4-H experience, Ronin said, "4-H has provided opportunities to gain friendships and make connections with many 4-Hers, community members, educators, and influential leaders across Kansas."

STONE...

FROM PAGE 1

yen for history and genealogy pressed her to dig deeper into her roots. She became a Chapter Regent of the Mercer Girls Chapter of the of the American Revolution in Seattle, and struck on the mission to track down her ancestors' graves and place stones on those which by lack of time or means or circumstance had remained without designation. She's tracked down, designed, purchased and placed three headstones so far - in addition to Garnett one in Bates County, Mo., and another in Colorado - with help from 26 members of

her family. The research can be arduous, she said.

"The biggest obstacles have been finding obituaries which state where someone was buried," Langworthy told the Review, "but not finding record of the burial at the cemetery." When this happens, Langworthy leaves no stone unturned and reaches out to the sextons of the cemeteries in the area, local historical societies, and scours the internet, including ancestry sites looking for clues.

Since one of Miriam's sisters was in the DAR, Langworthy contacted DAR Kansas State Regent Rebecca Geist Kline and Kansas State Librarian and Garnett Four Winds Chapter Regent Connie Becker to share

the dedication event.

Langworthy said her own kids - in their teens and 20s - are aware of their mom's passion for family history but are intrigued by other interests. But at least the seed's been planted, she said.

"I think the reason I feel this way about finding those graves and making sure they're marked is getting older myself and recognizing my own mortality," she said. "I don't want to be forgotten."

For more information on locating graves of family members, go online to www.findagrave.com.

Garnett American Legion Auxiliary supports the community in various ways - looking for new members

The American Legion Auxiliary Unit #48 in Garnett would like to thank the local community for all the support for veterans and active-duty members and their families.

The American Legion Auxiliary offers many services to community members, veterans and their family members. Some of the work we do include: poppy sales around Memorial Day, soldier boxes for deployed active military, support for Honor Flights, and Girls State, which allows young leaders to learn about how our

federal government works. We also offer three scholarships for local graduates that are supported through bake sales that are held on Tuesday evening during Bingo, which is open to the public at the VFW.

If you or anyone you know is interested in joining the American Legion Auxiliary, we are always looking for new members. To be eligible you must be a blood relative to a veteran/active duty/reservist who has served at least one day of active duty and if discharged, has an honorable discharge. Our meetings are held the 2nd Monday of the month at 9:30 am at the VFW hall at the South Lake.

Kim Wernsman, secretary
 American Legion Auxiliary, Unit #48

Fall city wide garage sales and cleanup week just around the corner

The city of Garnett will be having their annual fall city wide garage sales on Saturday, September 14, 2024.

Following the garage sales, the City of Garnett will have their city wide cleanup week from November 4th-8th and then will follow with their

brush only cleanup week from November 18th-22nd.

Please visit simplygarnett.com/clean-up-week.html for further information about what can and can't be picked up as well as how place the items properly for the crews to pick them up.

365...

FROM PAGE 1

\$1.5 million in expected expenditures to the end of this year but authorized at \$2.5 million both last year and this year. District capital outlay expenses are also estimated to come in at just over a million dollars this year, having originally been budgeted at \$2.24 million last year. The district's general fund estimate of \$9.5 million for next year is also expected to exceed the \$8.6 million in actual spending anticipated for the end of 2024.

First year USD 365 superintendent Ryan Most said a number of budget authorizations for the coming year like special education and capital outlay were duplicates of 2024, with the anticipation that unspent funds would be held as possible transfers for future years.

"Similar to capital outlay, we never know all of the services that may be needed to best support our students," Most said. "The amount budgeted this year is the exact same as budgeted last year. What is actually spent, like last year's \$1.5 million, will be determined based on student needs. As the year progresses, funds not needed for special education will be presented to the board for transfer to other budget areas."

As those funds accrue in various spending categories the district holds and earns interest on them until they're included as transfer funding in future budgets. The Kansas Policy Institute tracks these surplus balances for each school district in Kansas and posts them at www.kansasopengov.org. The

most recent figures show the increase in reserves (excluding capital outlay, debt service and federal funds) as a percentage of operating costs for that budget year show USD 365 retaining an amount equal to nearly 25 percent of its operating costs. In 2007, those retained reserves were about 10 percent of operations.

This year's budget also reflects changes in the district's assessed property valuation as a result of both market forces and political tinkering by the legislature in order to provide property tax relief for owners of real property who pay a uniform state levy for education.

The system for applying tax levies against real estate to pay for general fund education in Kansas is complicated, because legislators have exempted portions of a property's value from the mill levy multiplier used to fund education throughout Kansas. Kansas applies a 20 mill uniform tax levy against the portion of real property which is assessed for those taxes, but that exemption does not apply for capital outlay and other funds within a school district's budget. Due to a reduction in that general fund valuation for properties in USD 365 this year, the district's assessed valuation dropped from just over \$103 million to just over \$96 million, while the assessed value of the same property in funding capital outlay and other budget line items - reflected by higher sale prices of real estate in the local market - increased slightly to \$117.6 million.

Who knows?

We know. Buy a subscription, then YOU'LL know.
 (785-448-3121 • review@garnett-ks.com)

A good name is rather to be chosen than great riches and there is no better name than the name...

Jesus



...the Name which is Above Every Name (Philippians 2:9);
To the Christian He is the Christ, the Son of the Living God even our **Lord** and our **God** (Matthew 16:16 & John 20:28). He is the Image of the Invisible God, the **Radiance of His Glory** and the **Exact Representation of His nature** (Colossians 1:15 & Hebrews 1:3). He is **the Resurrection** and **the Way, the Truth and the Life** (John 11:25 and 14:6).

And on His robe and on His thigh He has a name written, "**KING OF KINGS, AND LORD OF LORDS.**" (Rev 19:16)

**Who is Jesus to you?
 Is He the LORD and savior of your life?**

You are welcome to join us for our Church services Sunday morning (10 AM) or Wednesday night (7 PM).

We have a new name and remodeled building but the same Great Savior.

You can find us on our website: www.gtbc.online



1006 East 6th Street • Corner of 6th St and Hwy 169 • www.gtbc.online

Fair Prices, American Components,
 Built To Last Generations



OSI Quality Structures
 Richmond, KS
 For Over 20 Years

**GARAGES | SHOPS | MAN-SHEDS
 MACHINE SHOPS | AG BUILDINGS**

QualityStructures.com • 800-374-6988



Courtney Tucker, Agent
courtney.tucker@agencywestins.com

• Auto • Health • Business & Commercial
 Work Comp • Bonding • Homeowners • Life
 • Recreational Vehicle • Farm

415 S. Oak St. • Garnett • (785) 448-2284

CALL AHEAD- PICK UP (913) 898-6211

Monday: Tacos & chicken enchiladas
Tuesday: Open-face roast beef
Wednesday: Fried chicken
Thursday: Meatloaf
Friday: Chicken fried steak or chicken fried chicken
Saturday: Wings- EVERY Saturday!
 1st Saturday: Ribeye Steak
 2nd Saturday: Chicken Enchiladas
 3rd Saturday: Boiled Shrimp
 4th Saturday: Fried Catfish
 5th Saturday: Sue's Choice

ALL AVAILABLE FAMILY-STYLE!

Every Sunday
 11 a.m. - 2 p.m.
Homemade PAN-FRIED CHICKEN



Where customers are treated like family!
Gas • Store • Café • Bar



423 E. Woodward St. • Parker, Kansas

County publishes notice of delinquent property taxes

(First published in The Anderson County Review, Tuesday, August 6, 2024.)

THIS IS NOT A TAX FORECLOSURE SALE NO PUBLIC AUCTION IS HELD**
 Property is NOT SOLD AT PUBLIC AUCTION until three years have passed from the 1st publication of delinquent tax on a parcel. The following publication is to legally perfect a tax lien against the property for Anderson County and is required by Kansas Statute. Notice is hereby given that so much of each tract of land described in the following list located in Anderson County Kansas, as may be necessary for the purpose, will be on the first Tuesday in September 2024, bid off by one as County Treasurer of said County, in the name of and for Anderson County, at my office in the courthouse, in Garnett, Kansas for the taxes and charges thereon, for the tax year 2023.

/s/ Dena M. McDaniel
 Anderson County Treasurer

STATE STATUTE PROVIDES THAT ONLY THE COUNTY MAY BID; NO PRIVATE BIDS PERMITTED. EACH TRACT OR LOT IS SUBJECT TO A FEE OF \$16.00 AND 0.11% INTEREST PER ANNUM PRORATED. Publication indicates tax payments through July 31, 2024. Any payments made after this date are not reflected in this publication."

AARON LIZER AGENCY INC
 1-00202230 \$5,923.02 Subd-NEW ORCHARD PARK ADD Blk- 1 Lot-1 & 2, Sec-25 Twp-20 Rng-19

AARON LIZER ENTERPRISES LLC
 1-00201330 \$1,079.76 BEG 2065'W & 1510'S OF NE SEC COR,W151', N200', E151', S200'TO, POB SEC-25 Twp-20 Rng-19

BERTHA MAE ADAMS 1-00501090 \$126.80 %HONEY WHITCOMB Subd-KINCAID Blk-16 Lot-6-8, Sec-36 Twp-22 Rng-20

LARRY SCOTT & SONYA LIN ALLEN
 1-08001120 Acres-214.80 , \$800.61 S2 NW4 & SW4 EX BEG 571'S NE COR SW4, S250', W500', N250', E TO POB EX E800' OF S990' OF SW4 & RD, Sec-33 Twp-21 Rng-19

LARRY SCOTT & SONYA LIN ALLEN
 1-08001160 Acres-118.90 , \$588.93 W3/4 OF SE4 EX RD Sec-33 Twp-21 Rng-19

LARRY SCOTT & SONYA LIN ALLEN
 1-08001170 Acres-39.40 \$290.71 E2 E2 SE4 EX RD Sec-33 Twp-21 Rng-19

LARRY SCOTT & SONYA LIN ALLEN
 1-08001200 Acres-78.20 \$592.58 W2 SW4 EX RD Sec-34 Twp-21 Rng-19

LARRY SCOTT & SONYA LIN ALLEN
 1-08002410 Acres-80.90 \$669.90 E2 NE4 EX RD Sec-04 Twp-22 Rng-19

LARRY SCOTT & SONYA LIN ALLEN
 1-08002420 Acres-80.10 \$534.41 W2 NE4 EX RD Sec-04 Twp-22 Rng-19

SHERYL JEAN ANDERSEN ETAL
 1-08002640 Acres-232.19 \$2,898.44 NW4 NE4 & NW4 & N 60 AC SW4 EX BEG NE COR NW4 NE4 W 200', S 50', E 200', N TO POB & EX BEG NW COR NW4,E687.3', S625', W685'', Sec-06 Twp-22 Rng-19

DARRYL E & GEORGIANNA ANDERSON
 1-00500550 Acres-2.30 \$666.90 BLK 0.4 TOG W/WADJ S1/2 E195' VAC FOURTH AVE,N1/2 ADJ THIRD AVE, Subd-KINCAID RESERVE STRIP Blk-0.4 Sec-36 Twp-22 Rng-20

KIMBERLY KAY ANDERSON & DAVID C HEIDRICH 1-06101500 ACE \$527.72 BEG NW COR SE4 S360', E270', N360', W270' TO POB EX RD, Sec-36 Twp-21 Rng-17

FRANCES R BABCOCK 1-09200170 Acres-40.90 \$2,114.56 %KEITH BABCOCK W2 NW4 W ATSF R/W & N MOP R/W, EX RD, & EX HWY R/W, Sec-06 Twp-23 Rng-19

FRANCES R BABCOCK 1-09300220 Acres-155.60 \$1,020.62 %KEITH BABCOCK NE4 EX RD Sec-33 Twp-22 Rng-19

FRANCES R BABCOCK 1-09300820 Acres-14.70 \$56.46 %KEITH BABCOCK E2 NW4 N MOP R/W & W ATSF & EX HWY R/W, Sec-06 Twp-23 Rng-20

KEITH BABCOCK 1-00100090 \$38.16 BEG 60'N & 30'W OF NW COR N TO N LN NW4,, E TO HWY SE ALG HWY TO N LN FIRST ST W TO POB, Subd-COLONY Blk-11 Sec-06 Twp-23 Rng-19

KEITH BABCOCK 1-09300830 Acres-7.40 \$758.56 NW4 LY S MOP R/W & E OLD DEPOT RD & W ATSF R/W, Sec-06 Twp-23 Rng-19

PAUL BAILEY 1-03502860 \$1,026.28 BEG NW COR NE4 SW4,E 100', S TO, RR,NW 1100', N TO POB, LESS RD R/W Sec-29 Twp-20 Rng-20

ERIC A BAIN 1-09301070 Acres-79.80 \$267.96 N2 NE4 Sec-08 Twp-23 Rng-19

DALE P & MARGARET A BAKER 1-00100300 \$527.08 Subd-COLONY Blk-18 Lot-7, 8 & 9 Sec-06 Twp-23 Rng-19

JUSTIN C & MARCIA L BARKER 1-12000880A Acres-21.80 \$231.18 BEG 990'N SW COR SW4,N990', E990', S990', W990' TO POB,EX RD, Sec-06 Twp-23 Rng-21

RANDY BARLEY 1-00701360 \$341.32 Subd-MERRILL'S ADD TO WESTPHAL Blk-16 Lot-12,13,14 & 15, Sec-36 Twp-21 Rng-17

KIRBY BARNES 1-00204460 \$13.30 BLDG #3 GOLF CART SHED Sec-19 Twp-20 Rng-20

1-02100660B Acres-12.17 \$141.76 BEG SW COR SE4,E528', N1056', W 20 DEG, N528', S1105' TO POB,EX RD Sec-33 Twp-19 Rng-20

KIRBY M & KIMBERLY D BARNES
 1-02100720 Acres-30.55 \$405.86 NE4 NW4 SE4 & N2 SE4 NE4 SE4 & N2 NE4, SE4 EX BEG NE COR SE4,S594', W TO CEN OF, OF CRK,NW ALG CEN OF CRK TO N LN SE4, E TO POB, EX RD, Sec-33 Twp-19 Rng-20

MICHAEL W & CARMEN A BARTHOLOMEW 1-00211640 \$2,720.18 Subd-GARNETT Blk- 14 Lot-11 & 12 Sec-30 Twp-20 Rng-20

JOHN C BAUMAN 1-00214460 \$263.62 BEG NE COR LT 2,S140', W37.3' N40', E93'',N100', E36.6'TO POB, Subd-GARNETT Blk- 55 Lot-LOT 2 Sec-30 Twp-20 Rng-20

RAYMOND D & LORI L BECKMAN
 1-00204310 \$22.64 GOLF CART SHED #93 Sec-19 Twp-20 Rng-20

RAYMOND D & LORI L BECKMAN LIVING TRUST 1-00210220 \$2,030.14 BEG 1008.78' N & 201.52' W OF NE COR LT 1 TH W146' N75' E148, S 75' TO POB Sec-30 Twp-20 Rng-20

KEVIN R & AISLYNN BELLINGER
 1-03501210 Acres-5.60 \$54.80 BEG 540'N SW COR LT 2, BLK 5, BRYSON, ADD; N616', E359' TO W R/W PRAIRIE SPIRIT TRAIL, SELY ALG R/W LN TO A PT, 25.1' E NE COR MCDONNELL ADD Sec-19 Twp-20 Rng-20

RONALD & LARA BENHAM 1-00205140 \$9.35 GOLF CART SHED #70 Sec-19 Twp-20 Rng-20

MARY BENNETT 1-00100790 \$759.86 Subd-COLONY Blk- 34 Lot-1 Sec-06 Twp-23 Rng-19

CURTIS D BETTINGER 1-03500760 Acres-7.70 \$1,239.78 BEG SE COR SW4,N528', W660', S528', E TO POB, Sec-05 Twp-20 Rng-20

SETH ALAN & ANGELA D BLACK
 1-00100260 \$989.70 N70'LTS 6,7 & N70'W2 LT 8 Subd-COLONY Blk- 17, Sec-06 Twp-23 Rng-19

SETH ALAN & ANGELA D BLACK
 1-00102590 \$977.56 BEG 60'W OF NW COR BLK 2 S150' W100' N150' E100' TO POB, Subd-COULTERS 1ST ADD TO COLON Blk- 2 Sec-07 Twp-23 Rng-19

MICHAEL S BLAUFUSS 1-06100051 Acres-78.60 \$277.30 S2 SE4 EX RD Sec-06 Twp-22 Rng-18

MICHAEL S BLAUFUSS 1-06200040 \$2,706.72 W2 NW4 & NE4 NW4 EX RD Sec-06 Twp-22 Rng-18

MICHAEL S BLAUFUSS 1-06200050 Acres-158.70 \$1,142.38 SW4 EX RD Sec-06 Twp-22 Rng-18

MICHAEL S BLAUFUSS 1-07000070A Acres-3.40 \$2,385.68 BEG NW COR SW4 SW4, E330', S495', W330', N495' TO POB, EX RD, Sec-12 Twp-22 Rng-17

ANTHONY C BOWLIN 1-01100310A Acres-29.50 \$6,170.42 WILLIAM BOWLIN BEG SE COR SE4, W722', N1810', E722'', S1810' TO POB, EX RD Sec-21 Twp-20 Rng-19

SETH & KATIE BRAND 1-00501380 \$138.20 %KATIE BRAND N16'OF W70'OF LT 12 Subd-KINCAID Blk- 14, Sec-36 Twp-22 Rng-20

JUDY MARIE BRAUCKMAN 1-03502780 Acres-10.00 \$2,938.62 E2 W2 SE4 NW4 LESS RD R/W Sec-29 Twp-20 Rng-20

ROXANNE BRECHEISEN 1-00215160 \$1,769.12 Subd-GARNETT Blk- 69 Lot-13 & W2 LT 14 Sec-30 Twp-20 Rng-20

LONNIE R & JUDITH BREWER
 1-00500190 Acres-2.05 \$449.36 N1/2 OF E195'VAC FOURTH AVE LYG S OF BLK 5, Subd-KINCAID RESERVE STRIP Blk- 05 Sec-36 Twp-22 Rng-20

JAMES O BROCE 1-01100660 Acres-2.70 \$1,615.70 BEG 1548.5'S NW COR SEC 29, WRLY ALG CTR CO RD 631.4', S75', E800', N75'TO CTR CO RD, NWRLY 235.5' TO POB, Sec-29 Twp-19 Rng-21

JAMES BROCE 1-02100310A Acres-3.24 \$1,217.24 COMM NW COR NW4, SE 836.57' ON WEST LINE, OF NW4 AND TRUE POB. SE 386.50, SE, 120.12', SE 282.37', SE 495' TO WEST, LINE OF NW4, NW 347.81' TO POB Sec-23 Twp-19 Rng-20

DALE A BROOKS 1-00206090 \$2,921.16 BEG 150'E & 245'N SW COR NE4 NW4, E150', N230', W150 S230' TO POB Sec-29 Twp-20 Rng-20

DALE A BROOKS 1-03502680 Acres-80 \$54.02 BEG 150' E SW COR NE4 NW4,N245', E150', S245', W150' TO POB, Sec-29 Twp-20 Rng-20

DALE A BROOKS 1-08001960 Acres-8.20 \$1,572.40 NW4 NW4 W OF RR EX RD Sec-02 Twp-22 Rng-19

GENIA BROWN 1-00700040 Acres-1.00 \$290.88 BEG 1363.56' W SE COR SW4,TH N216.7'', W216.7'', S216.7'', E216.7' TO POB Sec-25 Twp-19 Rng-17

SAMUEL D & BARBARA E BROWN 1-00301830 \$263.65 LAURIE A HAY LT 17 & N37.5'LT 18, Subd-GREELEY SUBDIVISION Blk- 25 Sec-30 Twp-19 Rng-21

THEODORE P & GENIA M BROWN 1-00700890 \$689.60 W92'LTS 13-17 & ALL LTS 18-24 INCL, Subd-SUPPLEMENT TO MERRILL ADD Blk- 5 Sec-36 Twp-21 Rng-17

VIRGINIA BROWN 1-00210310 \$1,191.32 BEG NW COR LT 8 TH N70', E140', S70', W140' TO POB, Sec-30 Twp-20 Rng-20

VIRGINIA BROWN 1-00210330 \$77.12 (UNPLATTED ALLEY) Subd-GARNETT Blk- 7 Lot-N12'LTS 7 & 8, Sec-30 Twp-20 Rng-20

DORIS BUNCH 1-08000700 \$1,380.28 Subd-RAILROAD ADD TO WELDA Blk-25 Lot-1, 2, & 3, Sec-35 Twp-21 Rng-19

JASON L BURGOON 1-11000620 Acres-16.80 \$1,389.46 BEG 304.2', N SE COR SE4, W424', N1845.8', E424', S 1845.8'. TO POB Sec-17 Twp-22 Rng-21

HOPE D BURNS 1-00500820 \$448.44 %WILLIAM STARR Subd-KINCAID Blk-26 Lot-7 & 8, Sec-36 Twp-22 Rng-20

CHARLES A BURRIS 1-00300840 \$589.20 Subd-GREELEY Blk- 50 Lot-S100'LTS 1-4 Sec-30 Twp-19 Rng-21

J E BYERLEY 1-02600960 \$56.06 Subd-MINERAL POINT Blk-3 Lot-1-5 Sec-36 Twp-19 Rng-17

J E BYERLEY 1-02600970 Acres-70 \$56.06 Subd-MINERAL POINT Blk-3 Lot-6-10 Sec-36 Twp-19 Rng-17

ROBERT CALVER 1-00217580 \$495.86 Subd-GARNETT Blk- 59 Lot-20 Sec-30 Twp-20 Rng-20

JERRY R & CRYSTAL D CAREY
 1-03502210 Acres-37.90 \$3,528.06 NW4 SW4 EX RD Sec-27 Twp-20 Rng-20

GLENDA J CARROLL 1-00700730 \$750.54 Subd-HIGHBERGERS ADD TO WESTPH Blk-6&7 Sec-36 Twp-21 Rng-17

KENNETH R CARTWRIGHT 1-04100990 Acres-19.10 \$1,235.10 NANCY ROBINSON W2 NWFR4,EX S2 SW4 NWFR4,EX NW4 NWFR4 & EX RD, Sec-19 Twp-20 Rng-21

BYRON S & JUANITA CARTY 1-00217800 \$140.12 Subd-GARNETT Blk-63 Lot-4,5 & 6 Sec-30 Twp-20 Rng-20

JOSEPH W & SONJA L CASCANETT
 1-00501980 \$144.02 Subd-SOUTH ADD TO KINCAID Blk- 16 Lot-16 & N2 15, Sec-01 Twp-23 Rng-20

DALE L CASTLEBERRY 1-00217820 \$669.30 %JEFFREY S CASTLEBERRY W2 LT 9 & E30'LT 10, Subd-GARNETT Blk- 63 Sec-30 Twp-20 Rng-20

GARY R CAYLOR 1-04601110 Acres-76.80 \$328.34 S2 SW4 EX RD Sec-34 Twp-21 Rng-21

GARY R CAYLOR 1-11000140 Acres-138.40 \$759.19 NW4, EX BEG 745.7' W NE COR NW4,, S378.3', W230.4', S 3 DEG W258', S 20, DEG W139.6', W384.6', N 2 DEG W757.8', E723' TO POB & EX RD, Sec-03 Twp-22 Rng-21

GARY R CAYLOR 1-11000140A Acres-9.60 \$435.99 BEG 745.7' W NE COR NW4, S378.3'', W230.4', S 3 DEG W258', S 20 DEG, W139.6', W384.6', N 2 DEG W757.8', E723' TO POB, EX RD, Sec-03 Twp-22 Rng-21

GARY R CAYLOR 1-11000180 Acres-35.10 \$262.49 NW4 NW4 EX RD Sec-04 Twp-22 Rng-21

CCDC LLC 1-00100891 \$155.82 %TRACY LYNN KELLAR Subd-COLONY Blk- 35 Lot-E2 LT 4, Sec-06 Twp-23 Rng-19

JAMES L CHAMBERS 1-02102290 Acres-4.30 \$158.78 %GENE CHAMBERS BEG 708' W N4 COR S TO CRK W A, LG CRK 528', N TO SEC LN,E TO B EG Sec-01 Twp-20 Rng-19

JOHN H & MARTHA CHANDLER
 1-02000100 Acres-80.00 \$333.06 S2 NW4 EX RD Sec-22 Twp-19 Rng-19

JOHN H & MARTHA CHANDLER
 1-03000520 Acres-143.70 \$645.28 NE4 EX BEG NW COR NE4 S 429' TO, FENCE,E ALG FENCE 330', NE ALG FENCE, TO PT 808.5' E POB,W TO POB EX RD Sec-06 Twp-20 Rng-19

JENNIFER CHESTER 1-00203460 \$3,147.38 Subd-VICKERS ADD TO GARNETT Lot-2 & S25'LT 1, Sec-25 Twp-20 Rng-19

HOWARD S & RUBY E CHRISTIAN
 1-02700250 Acres-39.10 \$2,696.50 N2 NE4 & N2 S2 NE4 EX BEG 355.9'S NE COR, NE4,W1472', S363.6', W129.1', S 8 DEG W, 221.2', S 65 DEG W674.5', W419.8' Sec-10 Twp-20 Rng-18

WALTER SCOTT CHURCH IV 1-04000220 Acres-40.50 \$1,455.38 NW4 SE4 EX RD Sec-09 Twp-20 Rng-21

KATHY L CLARK 1-00211080 \$562.11 Subd-GARNETT Blk- 7 Lot-12 & W10'LT11 Sec-30 Twp-20 Rng-20

KAYLEE CLARK 1-00501860 Acres-2.35 \$453.10 BEG SE COR BLK 18, N325', W300', S325'', E300' TO POB, TOG W ADJN E2 VAC OSAGE ST., Subd-SOUTH ADD TO KINCAID Blk- 18 Sec-30 Twp-23 Rng-20

MICHAEL W COBBS 1-04600460 Acres-.90 \$8.69 LTS 7 THRU 12 & ABAN RR ADJ TO LT 7 Subd-BUSH CITY Blk-6, Sec-19 Twp-21 Rng-21

MICHAEL W COBBS 1-04600480 Acres-.80 \$7.27 LTS 1,2,3 & ABAN RR ADJ Subd-BUSH CITY Blk-7, Sec-19 Twp-21 Rng-21

MICHAEL W COBBS 1-04600510 Acres-.60 \$5.66 Subd-BUSH CITY Blk-8 Lot-1-4 INCL Sec-19 Twp-21 Rng-21

MICHAEL W COBBS 1-04600520 Acres-.90 \$7.68 Subd-BUSH CITY Blk-8 Lot-7-12 INCL Sec-19 Twp-21 Rng-21

MICHAEL W & DEANN E COBBS 1-04600530 \$236.46 Subd-BUSH CITY Blk-8 Lot-5 & 6 Sec-19 Twp-21 Rng-21

MICHAEL W COBBS 1-04600540 \$17.23 Subd-BUSH CITY Blk-9 Lot-6,7 EX E50' Sec-19 Twp-21 Rng-21

MICHAEL W & DEANN E COBBS 1-04600590 \$20.94 Subd-BUSH CITY Blk-10 Lot-1,2,3,4 & 5 Sec-19 Twp-21 Rng-21

1-04600600 \$27.80 Subd-BUSH CITY Blk-10 Lot-13-18 Sec-19 Twp-21 Rng-21

ALEC COCHRAN 1-00501580 \$816.15 Subd-KINCAID Blk- 28 Lot-9 THRU 14 Sec-36 Twp-22 Rng-20

THOMAS J COEY 1-00500290 \$1,129.12 LTS 1 THRU 12,TOG W/VAC ALY Subd-KINCAID Blk- 24, Sec-36 Twp-22 Rng-20

THOMAS M COLE 1-00207850 \$4,699.22 Subd-PARKLANE ADD TO GARNETT Blk- 5 Lot-3, Sec-30 Twp-20 Rng-20

ROBERT & ANN CONAWAY 1-00700920 \$803.78 Subd-SUPPLEMENT TO MERRILL ADD Blk-5 Lot-E75' LTS 7-12, Sec-36 Twp-21 Rng-17

TONY CORNETT 1-00216930 \$1,307.14 ALFRED F KATZER Subd-GARNETT Blk- 44 Lot-3 & 4, Sec-30 Twp-20 Rng-20

STACEY D CORWIN 1-00217830 \$569.04 LISA D SNEDECOR LTS 11,12 & W10'LT 10 Subd-GARNETT Blk- 63, Sec-30 Twp-20 Rng-20

NANCY A COULBOURN 1-04500330 Acres-39.20 \$162.36 %JOHN CROAN NW4 SE4 EX RD Sec-21 Twp-21 Rng-21

NANCY A COULBOURN 1-04500330A Acres-39.10 \$163.98 SW4 NE4 EX RD Sec-21 Twp-21 Rng-21

KYLE MCGYVER CRIST 1-05100410 Acres-1.10 \$1,701.30 AMBER LYNN CRIST BEG 1200' N SW COR NW4 SE4,N31, 2.5', E TO HWY,S312.5', W TO POB EX RD Sec-18 Twp-21 Rng-20

MATTHEW H CUBIT 1-00208720 \$307.35 W32' LT 9,LT 10 & E10'LT 11 Subd-GARNETT Blk- 25, Sec-30 Twp-20 Rng-20

ROGER W & SHERRYL M CULLER
 1-00100490 \$511.40 Subd-COLONY Blk-25 Lot-6 Sec-06 Twp-23 Rng-19

JORGE & RHONDA CUMPLIDO
 1-00501240 \$474.70 BEG 80' E OF NW COR BLK 1,KINC AID,E 264', S 150', W 262', N 150, ' TO POB Sec-36 Twp-22 Rng-20

THOMAS J DALY 1-00214170 \$2,364.18 Subd-GARNETT Blk- 35 Lot-18,E30 LT 17 Sec-30 Twp-20 Rng-20

ROBERT ANDERSON & ASHLEE MARIE DAN 1-12001710 Acres-8.,"\$2,240.20 BEG 1141'S NE COR W2 NE4 S519' W773.7', N313', E166', N221'', E601' TO POB EX RD Sec-14 Twp-23 Rng-20

JOHN W & ALICE DAUGHERTY
 1-00501100 \$16.68 %HONEY WHITCOMB Subd-KINCAID Blk-16 Lot-3, 4 & 5, Sec-36 Twp-22 Rng-20

BETTY JOY DAULTON 1-00200650 Acres-2.50 \$1,402.13 BEG 60'W & 310'N OF SE SEC COR,W458'', N180', E11', N54', E450', S235' TO POB Sec-24 Twp-20 Rng-19

HUGH R & BETH L DAVIS 1-09300840A Acres-5.00 \$2,062.20 ROBERT J DAVIS N 5 AC OF SE4 NW4 E OF R/W EX LY W OLD H, WY EX RD Sec-06 Twp-23 Rng-19

JOHN R & HOLLY S DAVIS 1-00216580 \$107.46 Subd-CHAPMANS ADD TO GARNETT Blk- 25 Lot-3 & E

TAXES...

FROM PAGE 8

E208.71' NW4 EX RD Sec-27 Twp-19 Rng-21 LESLEY W HOLMAN 1-08000860 \$888.62 Subd-RAILROAD ADD TO WELDA Blk- 27 Lot-12 Sec-35 Twp-21 Rng-19 LESLEY W & GWYNN M HOLMAN 1-08002020 \$1,091.02 Subd-WELDA Blk-3 Lot-52 LTS 4,5,6 Sec-02 Twp-22 Rng-19 RICHARD L HUETTENMUELLER 1-00202390 \$1,362.14 Subd-HARPER ADD TO GARNETT Blk-1 Lot-2 & W15LT 3, Sec-25 Twp-20 Rng-19 KENNETH A HUGGINS 1-00202120 \$3,032.30 BEG 1126'N & 40'W OF SE COR, NE4,W82', N128', NELY 101', S189' TO POB EX RD, Subd-NEW ORCHARD PARK ADD Sec-25 Twp-20 Rng-19 CAROL M HUNSPERGER 1-00500670 \$16.68 Subd-KINCAID Blk-12 Lot-13, 14, & 15 Sec-36 Twp-22 Rng-20 CAROL M HUNSPERGER 1-00600240 \$22.60 Subd-LONE ELM Blk-7 Lot-3 & 4 Sec-05 Twp-23 Rng-20 JESSE HUNTER 1-00500910 \$15.54 LT 1 BLK 30,TOG W/ADJ S1/2 VAC SECOND AVE., Subd-KINCAID Blk-30 Sec-36 Twp-22 Rng-20 DALE W & REGINE A HURLOCK 1-00210800 \$1,088.12 Subd-GARNETT Blk-10 Lot-1 & 2 Sec-30 Twp-20 Rng-20 BRITITNI DANIELLE ISRAEL 1-07000120 Acres-3.70 \$1,941.70 BEG NW COR NW4 SW4 E500', S348', W500', N TO POB EX RD, Sec-14 Twp-22 Rng-19 ROBERT WINSTON JAMESCUPP 1-02000050 Acres-1.90 \$1,806.12 VICTORIA ROSE JAMESCUPP BEG NW COR NW4 E280', S325'', W280', N TO POB EX RD Sec-20 Twp-19 Rng-19 JONATHAN R & CARRIE L JARRED 1-00300680 \$536.18 Subd-GREELEY SUBDIVISION Blk- 28 Lot-17,18, Sec-30 Twp-19 Rng-21 JEFFS TOWING & RECOVERY LLC 1-00205970 Acres-4.50 \$3,301.36 LT 11 & E2 ADJN VAC INDUSTRIAL ST, Subd-MAGGIO ADD TO GARNETT Blk- 1 Sec-29 Twp-20 Rng-20 JEFFS TOWING & RECOVERY LLC 1-00205990 Acres-5.80 \$5,970.94 Subd-WARNER ADD TO GARNETT Blk- 1 Lot-1 Sec-29 Twp-20 Rng-20 JAMES K JOHNSON TRUST 1-04500680 Acres-52.70 \$5,207.14 NORMA JOHNSON TRUST BEG NWCOR NE4, S2294', W920', N625'', E180', N1650', W1130' TO POB EX RD Sec-04 Twp-21 Rng-20 TANYA JOHNSTON 1-00210400 \$625.19 BEG 145' N OF NE COR, TH W182', N75', E182', S75' TO POB, Sec-30 Twp-20 Rng-20 JYB LLC 1-02602740 Acres-152.63 \$1,129.58 NE4 EX A TRACT COMM NE COR NE4, W 214', TO TRU POB, W 382', S 696.49', E, 383.63', N 731.77' TO POB EX RD Sec-36 Twp-20 Rng-18 CHRIS KANAWYER 1-00218190 \$498.44 WENDEL KANAWYER Subd-MELIZA ADD TO GARNETT Blk- 1 Lot-1, Sec-30 Twp-20 Rng-20 JOHN G & DOLORES KAUFMAN 1-00301040 \$234.80 LILLY GILES BEG ON E LN MARY ST 624'N OF S SEC LN,, E180', N90', W180', S90' TO POB BEING PT OF SE4, Sec-30 Twp-19 Rng-21 JOHN J & JOYCE A KEILEN 1-00210040 \$1,760.76 BEG 330'N & 115'E OF NW COR N56', W115', N50' E TO RR SE A, LG RR TO PT E OF BEG TO POB Subd-GREELEY SUBDIVISION Blk- 6, Sec-30 Twp-20 Rng-20 MAHLON & TERESA KEIM 1-02602850 Acres-80.61 \$1,545.26 N2 SE4 EX RD Sec-27 Twp-20 Rng-18 MAHLON L KEIM 1-03100270 Acres-150.50 \$538.23 NW4 EX BEG NECOR, W611', S372', SE278', E550', N TO POB EX RD, Sec-08 Twp-20 Rng-19 ANDREW KEITH & DEBORAH SCHULZ-KEITH 1-02100240A Acres-80,\$211.84 BEG NW COR SW4, S1328.01', E2655.68'', N1327.04'', NW 25.69', W ALG FNC 2655.70'', S14.25' TO POB, Sec-22 Twp-19 Rng-20 TRACY L KELLAR 1-00100800 \$518.24 Subd-COLONY Blk- 34 Lot-2 Sec-06 Twp-23 Rng-19 TRACY L KELLAR 1-09200220 Acres-34.20 \$629.53 NE4 SE4 LESS 4 AC IN NE4 SE4 EX HWY RW Sec-01 Twp-23 Rng-18 ELIZABETH IRENE KENNARD 1-08001150 Acres-9.70 \$775.46 BEG SECOR SW4, W880', N495', E880', S495' TO POB EX RD, Sec-33 Twp-21 Rng-19 RICHARD ALAN & CASSANDRA DAWN KINDER 1-00212700 \$756.40 Subd-GARNETT Blk- 32 Lot-20 & E2 LT 19 Sec-30 Twp-20 Rng-20 RICHARD V KINDER 1-00216120 \$420.80 %JASON KINDER LT 3,W2 LT 2 & E2 VAC ALY BET LTS 3 & 4, Subd-CHAPMANS ADD TO GARNETT Blk- 15 Sec-30 Twp-20 Rng-20 KATHY J KING 1-00215560 \$684.14 Subd-GARNETT Blk- 73 Lot-4 & E36LT 5 Sec-30 Twp-20 Rng-20 STEPHEN P & CHRISTINA M KIRK 1-04000410 Acres-78.30 , \$2,625.00 N2 NW4 EX RD Sec-15 Twp-20 Rng-21 CAROL KISNER 1-08002050 \$294.00 %CARRIE HEPPLER Subd-WELDA Blk- 4 Lot-5 & 6, Sec-02 Twp-22 Rng-19 JUSTIN & ROCHELLE KOHLMEIER 1-00206680 \$1,461.17 Subd-PARKLANE ADD TO GARNETT Blk- 3 Lot-16, Sec-30 Twp-20 Rng-20 BETTY KYLE 1-00212260 \$413.14 Subd-GARNETT Blk- 29 Lot-6 & 7 Sec-30 Twp-20 Rng-20 GAIL R & C J LACEY 1-10500110 Acres-79.40 \$1,690.57 W2 SE4 EX RD Sec-26 Twp-22 Rng-19 DENNIS C LANDWEHR JR 1-00301690 \$85.94 Subd-GREELEY Blk- 41 Lot-10 Sec-30 Twp-19 Rng-21 DENNIS WAYNE LANKARD 1-08002060

\$160.52 ELISABETH MARIA LANKARD LT 7 & W44' LT 8, Subd-WELDA Blk-4, Sec-02 Twp-22 Rng-19 DENNIS WAYNE LANKARD 1-08002070 \$984.96 ELISABETH MARIA LANKARD E6' LT 8 & ALL LT 9, BLK 4, WELDA, Sec-02 Twp-22 Rng-19 MYRON G & CARRIE L LAYNG 1-04700410 Acres-39.00 \$446.46 SW4 NW4 EX RD Sec-27 Twp-21 Rng-20 RILEY-WAYNE J LEE 1-00218390 \$145.52 JANE L LEE Subd-MANDОВI ADD TO GARNETT Blk- 2 Lot-6-10 EX RR, Sec-31 Twp-20 Rng-20 RILEY-WAYNE J LEE 1-00218400 \$119.76 JANE L LEE Subd-MANDОВI ADD TO GARNETT Blk- 2 Lot-11-13, Sec-31 Twp-20 Rng-20 SHERRY J LEE 1-00214310 \$2,549.22 %SHERRY SCHMITZ LTS 16,17 & E2 LT 15 Subd-GARNETT Blk- 54, Sec-30 Twp-20 Rng-20 DANIEL C LILE SUPPLEMENTAL NEED TRUST 1-04000090 Acres-1,\$970.26 SE4 EX RD LESS BEG SE COR SE4 TH N540'', W711'', N115', W240', S655', E591' TO POB Sec-03 Twp-20 Rng-21 JERRY L & MARY J LIVELY 1-00218590 \$123.04 %MARY BELL LTS 14,15 & E10'LT 13 & W20'LT 16, Subd-MANDОВI ADD TO GARNETT Blk-5 Sec-31 Twp-20 Rng-20 MARY J LIVELY 1-00218620 \$311.90 %MARY BELL LTS 11 & 12 & W20'LT 13, Subd-MANDОВI ADD TO GARNETT Blk-5 Sec-31 Twp-20 Rng-20 AARON D & DIANE LIZER 1-02600160 Acres-99.24 \$4,183.90 BEG NW COR NW4, E2350', S1853.6', W2350'', N1853.6' TO POB, EX RD Sec-25 Twp-19 Rng-18 AARON & DIANE LIZER 1-02600160B Acres-50.57 \$7,728.06 BEG 1516.4' N SW COR SW4, E784', N190'', E150', N906', E770', N632.6', W1704', S1937' TO POB ,EX RD, Sec-25 Twp-19 Rng-18 CRAIG ALAN LUEDKE 1-09300070 Acres-39.00 \$194.94 NW4 NW4 EX RD Sec-27 Twp-22 Rng-19 CRAIG ALAN LUEDKE 1-09300960 Acres-81.20 \$806.10 E2 NE4 Sec-07 Twp-23 Rng-19 ALFONSO LUNA 1-12001600 Acres-2.90 \$227.42 JESSIE J HAYNES BEG SECOR NE4 SE4, N198', W770', S198'', E TO POB EX RD Sec-13 Twp-23 Rng-19 ANGEL LYNCH-VANDERPOOL 1-02605290 \$1,928.66 Subd-HARRIS Blk- 15 Lot-1 TO 3 Sec-08 Twp-20 Rng-18 ANGEL LYNCH-VANDERPOOL 1-02605330 \$92.30 Subd-HARRIS Blk- 15 Lot-10 TO 12 INCL Sec-08 Twp-20 Rng-18 ROGER G & DEBERA L MACE 1-00206100 \$1,152.92 BEG NE COR LT 5 E150', S200', W150', N200', TO POB, Subd-E S NICHOLS SUBDIVISION Sec-29 Twp-20 Rng-20 CHANCE MACKLIN 1-05100380 Acres-1.60 \$1,038.78 SETH MACKLIN BEG SW COR N2 SE4 N400', E TO W, HWY RW,W, S400', W TO POB Sec-18 Twp-21 Rng-20 CHANCE MACKLIN 1-05100440A Acres-2.70 \$70.02 SETH MACKLIN W175', NW4 SW4 SE4 Sec-18 Twp-21 Rng-20 MARK & AMANDA MADER 1-04000040 Acres-30.05 \$147.25 BEG SE COR NE4, W 970.56', N 1742.42', E, 276.80', S 386.16', E 575.68' TO E LN, S ON E LN TO POB EX RD, Sec-03 Twp-20 Rng-21 EDWARD A MANWILLER 1-00600480 \$655.50 %REBECCA RENDELL Subd-LONE ELM Blk-10 Lot-16,17,& 18, Sec-06 Twp-23 Rng-20 MARTIN OIL PROPERTIES 1-03501680A \$201.66 LEASE LAND CARD Sec-22 Twp-20 Rng-20 ALEXANDER C MARTIN 1-04601220 Acres-33.08 \$304.30 SW4 LY E CTR RR EX RD Sec-30 Twp-21 Rng-21 LEE MARTIN 1-00500840 \$51.86 Subd-KINCAID Blk- 26 Lot-3 & 4 Sec-36 Twp-22 Rng-20 ARCHIE F & SAMANTHA MASON 1-00203300 \$552.34 Subd-SMITH'S ADD TO GARNETT Blk-1 Lot-N2 LTS 11,12, Sec-25 Twp-20 Rng-19 ARCHIE JR & SAMANTHA MASON 1-00211070 \$756.27 Subd-GARNETT Blk- 8 Lot-1 & 2 Sec-30 Twp-20 Rng-20 ARCHIE JR & SAMANTHA MASON 1-00215850 \$565.22 Subd-CHAPMANS ADD TO GARNETT Blk-8 Lot-10 & W12LT 9, Sec-30 Twp-20 Rng-20 MICHAEL W MASON 1-00212900 \$93.64 W2 LT4 & E30' LT5 Subd-GARNETT Blk-34 Sec-30 Twp-20 Rng-20 JESS F LASTER 1-00502110 Acres-18.60 \$188.58 MICHAEL D MCCULLOUGH LTS 1 THRU 16 BLK 19,TOG W/VAC, ALY,LTS 1 THRU 16 BLK 20,TOG W/VAC ALY,ALL BLK 21,BEG SE, COR BLK 22,W150', N705', E150', Subd-SOUTH ADD TO KINCAID, Sec-01 Twp-23 Rng-20 THOMAS W MCCULLOUGH 1-00217620 Acres-1.00 \$1,631.16 Subd-GARNETT Blk-60 Lot-9-16 INCL Sec-30 Twp-20 Rng-20 DYLAN MCCUTCHEON 1-00500690 \$461.66 Subd-KINCAID Blk- 12 Lot-9 & 10 Sec-36 Twp-22 Rng-20 RANDALL D MCDANIEL 1-08001090 Acres-39.90 \$173.08 W2 E2 NE4 EX RD Sec-33 Twp-21 Rng-19 RANDALL D MCDANIEL 1-08001130 Acres-2.70 \$34.14 BEG 571'S NE COR SW4 S250', W500', N250', E500', TO POB EX RD, Sec-33 Twp-21 Rng-19 LELAND R MCGRAW 1-08000550 \$359.96 Subd-RAILROAD ADD TO WELDA Blk- 21 Lot-3, 4, & 5, Sec-35 Twp-21 Rng-19 BRAD MCGREGOR 1-08002090 \$292.66 LT 1 & E2 LT 2, BLK 5, WELDA Subd-WELDA Sec-02 Twp-22 Rng-19 BRAD MCGREGOR 1-08002100 \$588.80 W2 LT 2 & ALL LTS 3 THRU 5 Subd-WELDA Blk- 5, Sec-02 Twp-22 Rng-19

GREGG & LYNETTE MCHENRY 1-00217070 \$96.48 Subd-GARNETT Blk-45 Lot-9 Sec-30 Twp-20 Rng-20 NATHAN MCKINNEY 1-00501560 \$7.30 Subd-KINCAID Blk- 28 Lot-1-8 INCL Sec-36 Twp-22 Rng-20 LELAND G MCNEILL 1-00208730 \$860.40 Subd-GARNETT Blk- 25 Lot-12 & W30'LT11 Sec-30 Twp-20 Rng-20 STEPHANIE L MCNEILL 1-00208910 \$233.66 MITCHAEAL MALONE Subd-GARNETT Blk- 23 Lot-18, Sec-30 Twp-20 Rng-20 JEFFREY MEATS 1-00501180 \$845.04 Subd-KINCAID Blk- 13 Lot-3 & N40'LT 4 Sec-36 Twp-22 Rng-20 CRAIG J MERSMAN 1-02100870 Acres-1.80 \$713.32 BEG SW COR NE4,N 382.31', E231 S382.31', W231 TO POB, Sec-29 Twp-19 Rng-20 JOHN D & DORA B MERSMAN 1-00202410 \$701.27 %ASHTYNN D LOUK BEG 752'W & 60'N OF SE COR NE4, N140', W75', S140', E75' TO POB Sec-25 Twp-20 Rng-19 ROBIN O METOBO 1-00214370 \$1,968.72 S39.66LT 1 & S39.66'E70'LT 2 Subd-GARNETT Blk- 54, Sec-30 Twp-20 Rng-20 DEAN C & ANGELA MIKESSELL 1-00208680 \$881.24 Subd-GARNETT Blk-25 Lot-1 & 2 Sec-30 Twp-20 Rng-20 AMOS J MILLER JR 1-02602530 Acres-39.40 \$730.46 KENNETH M YODER NW4 NW4, EX RD Sec-25 Twp-20 Rng-18 JOSEPH L MILLER 1-07200650 Acres-157.40 \$1,659.98 %EUGENE MILLER SE4 EX RD Sec-04 Twp-23 Rng-18 JOSEPH L MILLER 1-07200650B Acres-80.00 \$287.20 %EUGENE MILLER W2 NE4 EX RD Sec-04 Twp-23 Rng-18 LINDA M MILLER 1-08100190 Acres-40.00 \$171.06 NW4 SE4 Sec-32 Twp-21 Rng-19 LINDA M MILLER 1-08100210 Acres-19.70 \$80.86 W2 SE4 SE4 EX RD Sec-32 Twp-19 Rng-19 SHAWN MILLER 1-00213710 \$1,401.17 JESSICA SWISHER Subd-GARNETT Blk- 49 Lot-15 EX E3.5', Sec-30 Twp-20 Rng-20 TRILLA MILLER 1-00500950 \$437.90 Subd-KINCAID Blk-30 Lot-2, 3 & 4 Sec-36 Twp-22 Rng-20 DAVID MILNER 1-09400170 Acres-69.59 \$372.74 S2 NE4 EX HWY RAW & PRAIRIE SPIRIT TRAIL Sec-20 Twp-22 Rng-19 DAVID C MILNER 1-09400170B Acres-62.00 \$580.90 N2 SE4 EX BEG SWCOR N2 SE4, N1320', E, 660', S1320, W660' TO POB Sec-20 Twp-22 Rng-19 DAVID C MILNER 1-09400180 Acres-158.90 \$2,041.72 NW4 EX RD Sec-21 Twp-22 Rng-19 RICKY D MITCHELL 1-00701170 \$101.82 BRITTANY MITCHELL, Subd-MERRILL'S ADD TO WESTPHAL Blk- 9 Lot-13,14,& 15, Sec-36 Twp-21 Rng-17 STEVEN & WANDA MITCHELL 1-00216430 \$166.40 LTS 4-6 & VAC ALY BET LTS 5 & 6, Subd-CHAPMANS ADD TO GARNETT Blk- 18 Sec-30 Twp-20 Rng-20 RONALD C MOORE JR 1-00500560 Acres-3.20 \$1,355.16 BLK 0.3,T.OG W/ADJ S1/2 VAC THIRD AVE,& BEG SW COR SD BLK,, E266', S140', W TO ST,N140' TO POB, Subd-KINCAID RESERVE STRIP Blk-0.3 Sec-36 Twp-22 Rng-20 ALVIN F MORRIS 1-04000420 Acres-29.98 \$232.42 N30 AC S2 NW4 Sec-15 Twp-20 Rng-21 MARTHA A MOYER 1-10200160 Acres-116.60 \$937.76 SW4 NW4 & W2 SW4 EX RD Sec-08 Twp-22 Rng-20 MICHELLE MOYER 1-08000600 \$665.22 Subd-RAILROAD ADD TO WELDA Blk- 23 Lot-1, 2, & 3, Sec-35 Twp-21 Rng-19 HEATHER MULLINS 1-00102450 \$594.34 Subd-PINEGAR'S 1ST ADD TO COLO Blk- 3 Lot-10 THRU 12, Sec-06 Twp-23 Rng-19 CODY & NATASHA MUNDELL 1-03502040 Acres-20.00 \$5,833.86 BEG N660', W660', SE COR SE4, TH N1320'', W660', S1320', E660', TO POB Sec-26 Twp-20 Rng-20 CODY & NATASHA MUNDELL 1-03502060A Acres-79.73 \$828.82 E2 NE4 & SW4 NE4 & S2 NW4 NE4 & E440' S495' NW4, Sec-35 Twp-20 Rng-20 CARRIE O NICHOLAS 1-00208370 \$956.70 Subd-GARNETT Blk- 18 Lot-23 & 24 Sec-30 Twp-20 Rng-20 RHONDA S O'BANNON 1-04000690 \$127.54 BEG NECOR NW4 S110', W414', N110', E414' TO POB,EX RD, Sec-27 Twp-20 Rng-21 CARLA I OLDS 1-00500700 \$60.72 Subd-KINCAID Blk- 12 Lot-7 & 8 Sec-36 Twp-22 Rng-20 SUSAN J OWENS 1-00212290 \$111.22 Subd-GARNETT Blk-29 Lot-12 & W2 LT 11 Sec-30 Twp-20 Rng-20 CHARLES L & LAURA PARKS 1-00211280 \$907.32 RICHARD LEE PARKS %RICHARD PARKS, Subd-GARNETT Blk- 12 Lot-1 & E2 LT 2 Sec-30 Twp-20 Rng-20 JEFF PATTERSON 1-00211720 \$1,114.36 S56'OF E26.66'OF LT 23 & S56' LT 24 Subd-GARNETT Blk- 14, Sec-30 Twp-20 Rng-20 JEFFREY E PATTERSON 1-08000120 Acres-11.22 \$1,782.48 W2 N2 NE4 LESS A TRACT COMM SW COR W2 N2, NE4 E 575 TO POB TH N 900', W 575'', N422.60', E1317.82', S 1322.84', W 742.64' TO POB & EX RD, Sec-25 Twp-21 Rng-19 PRESTON W & LINDA E PEINE 1-00210200 \$529.05 %SUE ELLEN CAYLOR-HARSH REVOCABLE TRUST, BEG 114'S NW COR LT 1 TH E90' S34', W90 N34 TO POB, Subd-BRYSON ADD TO GARNETT Blk- 4 Sec-30 Twp-20 Rng-20 ERVIN PICKERING JR 1-00701180 \$176.52 Subd-MERRILL'S ADD TO WESTPHAL Blk- 9 Lot-8-12, Sec-36 Twp-21 Rng-17 SAMUEL WAYNE PITTS ETAL 1-00701350

\$62.42 Subd-MERRILL'S ADD TO WESTPHAL Blk- 16 Lot-16 & 17, Sec-36 Twp-21 Rng-17 SAMUEL WAYNE PITTS ETAL 1-00701370 \$582.66 LTS 7 THRU 11 INCL Subd-MERRILL'S ADD TO WESTPHAL Blk- 16, Sec-36 Twp-21 Rng-17 RUSSELL EARL & GABRIELLE ANNE PRATER 1-00301940 \$924.58 Subd-GREELEY Blk- 42 Lot-11 Sec-30 Twp-19 Rng-21 DAVID E & KATHY J PRESTON 1-09300740 Acres-4.87 \$1,017.48 W2 NW4 SE4 SW4,EX RD Sec-05 Twp-23 Rng-19 ROBERT L PRESTON 1-00500660 \$11.63 Subd-KINCAID Blk- 12 Lot-16, 17 & 18 Sec-36 Twp-22 Rng-20 LINDA L PRUITT 1-00500410 \$1,558.52 %BRITTNEY FRYE Subd-KINCAID Blk- 18 Lot-1 THRU 8, Sec-36 Twp-22 Rng-20 STEPHEN R PUTTHOFF 1-00700020 \$1,145.92 MARY PETERSON COM 60'N & 175'W OF NE COR BLK, 5,TH N142', E380', S142', W380' TO POB Sec-25 Twp-21 Rng-17 DEANE A & PATRICIA J RAMSEY 1-10500910 Acres-86.20 \$335.12 N2 NW4 EX RD Sec-30 Twp-22 Rng-20 DEANE & PATRICIA RAMSEY 1-11100040 Acres-81.30 \$669.26 N2 SW4 EX RD Sec-24 Twp-22 Rng-20 KENNETH C & DOLORES J REDIFER 1-02100090 Acres-20.10 , \$1,409.76 BEG E LN SD SEC & 1246.8' N SECOR, N, 1229.7', W712.5', S1229.7', E712.5' TO POB EX RD, Sec-19 Twp-19 Rng-20 LARRY REDMAN 1-08000710 \$307.00 Subd-RAILROAD ADD TO WELDA Blk- 25 Lot-4, 5 & 6, Sec-35 Twp-21 Rng-19 STEPHEN E REED JR 1-00217850 \$801.34 Subd-GARNETT Blk- 63 Lot-16,17 & 18 Sec-30 Twp-20 Rng-20 MATTHEW WAYNE REYNOLDS 1-00302310 \$398.38 Subd-GREELEY Blk- 43 Lot-S2 LT 1 Sec-30 Twp-19 Rng-21 RICHMOND CIRLE PARTNERSHIP 1-00201700 \$3,697.48 BEG 412.5'N & 534'E SW COR NE4, E110', S127.5', W110', N127.5' TO POB Sec-25 Twp-20 Rng-19 ANASTACIO RIOS 1-04601360A Acres-80.50 \$346.12 S2 SE4 EX RD Sec-02 Twp-21 Rng-20 EUNICE M ROARK 1-00600160 \$3.50 %DALE OTT Subd-LONE ELM Blk-2 Lot-11 & 12, Sec-05 Twp-23 Rng-20 JEFFREY S & LISA L ROBERTS 1-00101770 \$1,166.18 Subd-COLONY Blk- 63 Lot-S96'LTS 4,5,6 Sec-06 Twp-23 Rng-19 JOYCE ANN ROBERTS 1-04000500 Acres-38.60 \$379.12 THERESA SMITH SE4 SW4 EX RD Sec-16 Twp-20 Rng-21 JOYCE ANN ROBERTS 1-04101120 Acres-28.50 \$260.18 THERESA SMITH SW4 SW4 EX BEG NW COR E 660', S 660', W 660', N 660' TO POB EX RD. Sec-16 Twp-20 Rng-21 LEE ROBERTS 1-00203880 \$117.80 Subd-BRONSTON HEIGHTS Blk- 4 Lot-5,6 & 7 Sec-25 Twp-20 Rng-19 LEE ROBERTS 1-00203891 \$89.18 Subd-BRONSTON HEIGHTS Blk-4 Lot-8,9 & E5'LT10, Sec-25 Twp-20 Rng-19 NATHANIEL ROBINSON 1-00215530 \$768.20 JESUS ROBINSON, Subd-CHAPMANS ADD TO GARNETT Blk- 4 Lot-1 & E24'LT 2, Sec-30 Twp-20 Rng-20 CARL A ROCKERS 1-00211010 \$857.78 Subd-GARNETT Blk-8 Lot-12 Sec-30 Twp-20 Rng-20 MAX D ROCKERS 1-00216210 \$214.87 LTS 9,10 & VAC ALY BET LTS 8,9, Subd-CHAPMANS ADD TO GARNETT Blk- 14 Sec-30 Twp-20 Rng-20 RONALD E & ROBERTA M ROMIG 1-00215670 \$671.18 Subd-GARNETT Blk- 74 Lot-7 & E10'LT 8 Sec-30 Twp-20 Rng-20 RONALD E & ROBERTA ROMIG 1-00215680 \$654.84 LT 9 & W30'LT 8 & E10' LOT 10 Subd-GARNETT Blk-74, Sec-30 Twp-20 Rng-20 RONALD E & ROBERTA M ROMIG 1-00216600 \$294.24 LOTS 5 & 6 & W2 LOT 4 & VAC ALY BET LOTS 5 & 6, Subd-CHAPMANS ADD TO GARNETT Blk-25 Sec-30 Twp-20 Rng-20 RONALD E & ROBERTA ROMIG 1-00219140 \$336.02 Subd-MANDОВI ADD TO GARNETT Blk-24 Lot-1-6 INCL, Sec-31 Twp-20 Rng-20 DEVON ROSEBAUGH 1-02605220 \$29.95 Subd-HARRIS Blk- 14 Lot-3 & 4 Sec-08 Twp-20 Rng-18 DEVON ROSEBAUGH 1-02605230 \$26.34 Subd-HARRIS Blk- 14 Lot-5,6 Sec-08 Twp-20 Rng-18 DEVON ROSEBAUGH 1-02605260 \$117.55 N2 LTS 7 & 8 & ALL LTS 9 THRU 14 Subd-HARRIS Blk- 14, Sec-08 Twp-20 Rng-18 RUSSELL L & ELEANOR ROSS 1-00600200 \$4.41 %CAROL M HUNSPERGER Subd-LONE ELM Blk-7 Lot-1 & 2, Sec-05 Twp-23 Rng-20 RICKEY D SALLEE 1-00209200 \$33.80 MARY M LONGEROT Subd-GARNETT Blk-21 Lot-E2 LT 16, Sec-30 Twp-20 Rng-20 RICHARD E & DIXIE L SCOBEE 1-08000360 \$313.22 %JILL OCHWERI Subd-RAILROAD ADD TO WELDA Blk- 12 Lot-3 & 4, Sec-35 Twp-21 Rng-19 RICHARD E & DIXIE L SCOBEE 1-08000370 Acres-30 \$43.28 %JILL OCHWERI Subd-RAILROAD ADD TO WELDA Blk-12 Lot-5 & 6, Sec-35 Twp-21 Rng-19 DONNA J SCOTT 1-08001020 Acres-158.40 \$2,765.10 NW4 EX BEG 654'W SE COR NW4 W209', N209', E209', S TO POB EX RD, Sec-28 Twp-21 Rng-19 GORDON SETTLEMAYER 1-07201390 Acres-1.00 \$65.86 %VERNON SETTLEMAYER BEG NE COR SE4 W208.7', S208.7', E208.7', N TO POB EX RD Sec-11 Twp-23 Rng-17 SHAMROCK VALLEY VENTURES LLC 1-02605090 \$1,017.84 Subd-HARRIS Blk- 6 Sec-08 Twp-20 Rng-18

JOHN SHAUGHNESSY 1-06100240 Acres-3.40 \$68.42 JOSEPH A VOGEL %ROY BOUSE, BEG 478.5'E SW COR SEC E990', N264' TO, OLD RD BED,SWLY ALG OLD RD BED TO POB Sec-06 Twp-21 Rng-18 JOHN SHAUGHNESSY 1-06100330 Acres-2.60 \$23.08 JOSEPH A VOGEL %ROY BOUSE, BEG 495'E NW COR,S TO CRK,NE ALG CRK TO SEC LN,W TO POB, Sec-07 Twp-21 Rng-18 KELLEY SHEFFIELD 1-00208970 \$807.74 Subd-GARNETT Blk- 22 Lot-1 & E10'LT 2 Sec-30 Twp-20 Rng-20 REGAN S. SHERMAN 1-08100070A Acres-79.90 \$363.16 E2 NW4, EX RD Sec-29 Twp-21 Rng-19 SIDELINE PROPERTIES LLC 1-00206150 Acres-.90 \$1,193.24 Subd-EASTGATE ADD TO GARNETT Blk- 1 Lot-S188' LT 7, Sec-29 Twp-20 Rng-20 STACY T SILLS 1-03500860 Acres-6.60 \$824.03 SHELLY R SILLS NW4 NW4 SW4 LY E OF SPIRIT TRAIL,, Sec-07 Twp-20 Rng-20 DONALD D & LINDA LOU SMITH 1-07200170 Acres-158.60 , \$1,134.68 SE4 EX RD Sec-36 Twp-22 Rng-17 DONALD D & LINDA L SMITH 1-07201070 Acres-19.10 \$190.41 S810' OF W1076' OF SW EX RD Sec-18 Twp-23 Rng-18 DONALD & LINDA L SMITH 1-07201230 Acres-307.30 \$1,226.88 NE4, SE4, ALL BLK 1 & BLK 2 NORTHCOTT,, EX LTS 9 THRU 14 BLK 2 NORTHCOTT Sec-01 Twp-23 Rng-17 DONALD & LINDA L SMITH 1-07201410 Acres-159.10 \$914.99 NE4 EX RD Sec-12 Twp-23 Rng-17 DONALD D & LINDA L SMITH 1-07201450 Acres-157.90 \$844.02 SW4 EX RD Sec-12 Twp-23 Rng-17 LINDA L & DONALD SMITH 1-07201470 Acres-157.80 \$581.34 %DONALD SMITH NE4, EX RD Sec-13 Twp-23 Rng-17 THOMAS A & REGAN S SMITH 1-08002170 \$320.82 Subd-WELDA Blk-7 Lot-10,11 & 12 Sec-02 Twp-22 Rng-19 TERRY LYNN SNOVER 1-00211930 \$1,373.42 Subd-GARNETT Blk- 26 Lot-15 & E2 LT 14 Sec-30 Twp-20 Rng-20 FRANK D SOBBA 1-02100030 Acres-25.67 \$310.00 NW4 W OF RR EX BEG 58'E SW COR, NW4,E780', N206', W781', S206'TO POB & EX, COM SW COR NW4, N1157.6', E TO E RR LN, HWY 59 TO POB, N1339.5', SWLY ALG [CONT] Sec-19 Twp-19 Rng-20 LUBNA SODAGAR 1-00210700 \$5,045.95 BEG 797.9' S & 40' E NW COR, E290', S110', W290', N110' TO POB, Sec-30 Twp-20 Rng-20 CLIFFORD C SPARKS SR REVOCABLE TRUST 1-02600310A Acres , \$2,760.94 %BRET A & JENNIFER C POPE BEG 330'E NWCOR NW4, S330', E1320'', N330', W1320' TO POB EX RD Sec-28 Twp-19 Rng-18 DOUGLAS W SPRAGUE 1-10501770 Acres-5.00 \$1,769.20 BEG 58'E SW COR SE4, N 408', W 577'', S408', E 577' TO POB & EX RD, Sec-11 Twp-23 Rng-19 JOEL F & STACY S SPRAGUE 1-10501490 Acres-119.10 \$1,251.44 W2 SE4 & NE4 SE4 EX RD Sec-08 Twp-23 Rng-20 SPRAGUES SPREAD LLC 1-10500640 Acres-162.50 \$1,200.90 NW4 EX RD Sec-27 Twp-22 Rng-20 SPRAGUES SPREAD LLC 1-10500650 Acres-163.20 \$781.34 SW4 EX RD Sec-27 Twp-22 Rng-20 SPRAGUES SPREAD LLC 1-12001480 Acres-170.30 \$1,282.07 17 & E2 W2 SW4 EX RR R/W & RD

TAXES...

FROM PAGE 9

KEELA A VELVICK 1-00212430 \$1,464.40
%ROLENA KENNARD Subd-GARNETT Blk- 30 Lot-S501LT 7, Sec-30 Twp-20 Rng-20
MELISSA ANN VOSBURG TRUST 1-00215450 \$1,172.44 Subd-GARNETT Blk- 72 Lot-12 Sec-30 Twp-20 Rng-20
JUSTIN & HOLLY WAGES 1-08001720 \$1.84 Sec-01 Twp-22 Rng-19
RODNEY E & DARLENE R WALFORD 1-00216620 \$184.12 Subd-CHAPMANS ADD TO GARNETT Blk- 25 Lot-9 & 10, Sec-30 Twp-20 Rng-20
WILLIAM C WALKER 1-00214230 \$1,113.80 W15', N100' LT 3 & E10' LOT 4 Subd-GARNETT Blk-54, Sec-30 Twp-20 Rng-20
SALLY WALLACE 1-00500750 \$44.02 Subd-KINCAID Blk-17 Lot-16 Sec-36 Twp-22 Rng-20
RYAN & CARLA WALTER 1-00202590 \$2,796.56 Subd-MCDOWELL'S ADD TO GARNETT Blk- 1 Lot-1, Sec-25 Twp-20 Rng-19
RYAN & CARLA WALTER 1-00204890 \$14.28 GOLF CART SHED #46 Sec-19 Twp-20 Rng-20
RYAN A & CARLA J WALTER 1-00207870 \$5,981.84 LTS 1,2, & LT 3 EX S 30' Subd-PARKLANE ADD TO GARNETT Blk- 4, Sec-30 Twp-20 Rng-20
RYAN A & CARLA WALTER 1-00213311 \$3.77 BEG NW COR LT 3, E2.6', S105', W2.6',

N105' TO POB, Subd-GARNETT Blk-47 Sec-30 Twp-20 Rng-20
WARD HOLDINGS LLC 1-00213461 \$1,097.64 BEG NE COR LT 24 W100', S23', E100', N23'TO POB, Subd-GARNETT Blk- 47 Sec-30 Twp-20 Rng-20
EJ & NETTIE H WARE 1-04600710 \$61.52 Subd-BUSH CITY Blk-19 Lot-1 & 2 Sec-19 Twp-21 Rng-21
EJ & NETTIE H WARE 1-04600720 \$29.62 ABAN RR R/W W OF ALLEY, Subd-BUSH CITY Blk- 19, Sec-19 Twp-21 Rng-21
EJ & NETTIE H WARE 1-04600730 \$62.46 Subd-BUSH CITY Blk- 19 Lot-4-8 INCL Sec-19 Twp-21 Rng-21
EJ & NETTIE H WARE 1-04600740 \$28.00 Subd-BUSH CITY Blk- 19 Lot-3 Sec-19 Twp-21 Rng-21
PHILLIP A WATSON 1-09400320 Acres-127.31 \$780.80 %STEPHEN P WATSON NWFR/4, EX BEG NE COR NWFR/4, S660', W330', N660', E330', AND EX RD Sec-31 Twp-22 Rng-19'
CRYSTAL M WATTS 1-00102320 \$410.64 %CRYSTAL LYDA Subd-PINEGAR'S 2ND ADD PLAT 3 Blk-7 Lot-7 & 8, Sec-06 Twp-23 Rng-19
ETHEL L WEBBER 1-00102570 \$67.80 Subd-COULTERS 1ST ADD TO COLON Blk- 2 Lot-1,2, & 3, Sec-07 Twp-23 Rng-19
ETHEL LOLA WEBBER 1-00102580 \$1,164.30 Subd-COULTERS 1ST ADD TO COLON Blk- 2 Lot-4,5, & 6, Sec-07 Twp-23 Rng-19

AMANDA WEBER 1-00217960 \$452.06 Subd-GARNETT Blk- 64 Lot-13,14,15,& 16 Sec-30 Twp-20 Rng-20'
STEVE B & TRACY L WEESE 1-03502850 \$932.80 BEG 100'E NW COR NE4 SW4, E133', S345', W133', N345'TO POB EX RD & R/W Sec-29 Twp-20 Rng-20'
TYLOR R & MICHAELA L WELBORN 1-00209870 \$1,691.52 E38' LT17 & W31'LT 18 Subd-GARNETT Blk- 36, Sec-30 Twp-20 Rng-20
JERRY WEST 1-07201270 \$5.37 %GRAYDEN & WILLENA TRESSLER LTS 9-14 INCL, NORTHCOTT, Sec-01 Twp-23 Rng-18
LAWRENCE W WEST 1-07200890 Acres-79.10 \$991.10 W2 SW4 EX RD Sec-06 Twp-23 Rng-18
LAWRENCE W WEST 1-07201290 Acres-161.10 \$3,724.96 W2 NE FR4 & E2 NW FR4 EX RD Sec-02 Twp-23 Rng-17
ROY W & HONEY L WHITCOMB 1-00500280 \$22.10 Subd-KINCAID Blk- 19 Lot-LT 5 & 6 Sec-36 Twp-22 Rng-20
ROY W & HONEY L WHITCOMB 1-00500620 \$48.52 Subd-KINCAID Blk- 3 Lot-12 Sec-36 Twp-22 Rng-20
ROY W & HONEY L WHITCOMB 1-00501080 \$272.10 LT 9 & N75'LT 10 Subd-KINCAID Blk- 16 Sec-36 Twp-22 Rng-20
ROY W & HONEY L WHITCOMB 1-12001430 Acres-9.25 \$582.16 BEG SE COR W2 NE4, N650', W613', S610' E610' TO POB, Sec-11 Twp-23 Rng-20

BARRY M & JACQUELYN C WHITE 1-08004000 \$215.83 Subd-WELDA Blk-7 Lot-7,8 & 9 Sec-02 Twp-22 Rng-19'
JACQUELIN C WHITE 1-08002110 \$917.06 LAWRENCE E TUCK Subd-WELDA Blk- 5 Lot-6 Sec-02 Twp-22 Rng-19
LORI WHITE 1-00217860 \$104.16 LTS 19,20 & W5'LT 21 Subd-GARNETT Blk- 63, Sec-30 Twp-20 Rng-20
RICHARD L WHITE 1-03102100B Acres-80.00 \$966.00 W2 NE4,EX RD Sec-28 Twp-20 Rng-19'
GERRY L WIGHT 1-00207650 \$1,392.28 NANCY L WHITE Subd-GARNETT Blk- 4 Lot-4 & E2 5, Sec-30 Twp-20 Rng-20
GERRY L WIGHT 1-00214750 \$548.46 NANCY L WHITE LT 16 & N100'LT 17 Subd-GARNETT Blk- 66, Sec-30 Twp-20 Rng-20
AMY M WILLIAMS 1-00211030 \$577.82 Subd-GARNETT Blk- 8 Lot-8 & 9 Sec-30 Twp-20 Rng-20
CLAUDIA D WILLIAMSON & DAVID W GREEN 1-00301120 \$1,782.18 Subd-GREELEY Blk- 40 Lot-7 Sec-30 Twp-19 Rng-21
CHARLES L & MEGAN A WILSON 1-00218760 \$259.74 LTS 1 THRU 5 & N2 VAC ALY ADJ ON S, Subd-MANDOVII ADD TO GARNETT Blk- 11 Sec-31 Twp-20 Rng-20
KATRINA WINTERS 1-08000730 \$307.00 Subd-RAILROAD ADD TO WELDA Blk- 25 Lot-10, 11 & 12, Sec-35 Twp-21 Rng-19
CHARLI WOLKEN 1-00300130 Acres-1.50 \$509.83 CLAUDETTE J WOLKEN E120'LT

7&8 & BEG NE COR LT 6, W45', S50', W100', S50', E145', N100'TO POB TOG W/VAC ALYS ADJ, Subd-GREELEY Blk- 52 Sec-30 Twp-19 Rng-21
JACOB A WOLKEN 1-08001940 \$307.36 LTS 7 & 8, & SLY35'LT 9 Subd-WELDA Blk- 2, Sec-02 Twp-22 Rng-19
JACOB A WOLKEN 1-08001950 \$988.46 Subd-WELDA Blk- 2 Lot-5,6 Sec-02 Twp-22 Rng-19'
JAMES W & ELAINE T WOOSLEY 1-00701110 \$419.70 %DONNA A SMITH ETAL, Subd-SUPPLEMENT TO MERRILL ADD Blk- 8 Lot-5 TO 12 INCL, Sec-36 Twp-21 Rng-17
KAREN & WILLIAM WOOSLEY 1-00208890 \$951.46 Subd-GARNETT Blk- 23 Lot-15 & 16 Sec-30 Twp-20 Rng-20
BENEDICT JR & MARY S YODER 1-06000660 Acres-119.90, "\$1,628.96 S2 NE4 & NE4 NE4 EX RD Sec-13 Twp-21 Rng-18
BENEDICT JR & MARY S YODER 1-06000730 Acres-49.80 \$510.30 SE4 LY N RR R/W EX RD Sec-13 Twp-21 Rng-18
BRANDON A YODER 1-08000590A \$1,420.59 Subd-RAILROAD ADD TO WELDA Blk- 22 Lot-7,8,9, Sec-35 Twp-21 Rng-19
JOSHUA C & HELEN R YODER 1-05000700 \$73.46 LTS 8 THRU 13 INCL & VAC ST & ALLEY Subd-MONT IDA Blk- 14, Sec-18 Twp-21 Rng-19
LESTER P YODER JR 1-04700420 Acres-77.30 \$330.84 W2 SW4 EX RD Sec-27 Twp-21 Rng-20
LESTER P YODER JR 1-00206270

\$1,508.94 Subd-E S NICHOLS SUBDIVISION Blk-1 Lot-2 Sec-29 Twp-20 Rng-20
LESTER P YODER 1-03000790 Acres-1.00 \$883.20 BEG 763.5' W & 1130' N SE COR NE4, N209', W208', S209', E208', TO POB Sec-13 Twp-20 Rng-19
LESTER P YODER JR 1-03000800 Acres-1.80 \$204.08 BEG N GATE POST 489'W & 982'N SE COR, S2 NE4, TH NWLY 424.7' ALG W R/W CO RD, E410', SWLY ALG US HWY 59 318' TH W286' Sec-13 Twp-20 Rng-19'
AMMINITA E YOUNG 1-12000690 Acres-38.00 \$90.81 SW4 SW4 EX RD Sec-09 Twp-23 Rng-21
ROGER W YOUNG 1-00100810 \$1,248.28 Subd-COLON Y Blk- 34 Lot-3,4 & E10' 5 Sec-06 Twp-23 Rng-19'
ROGER W YOUNG 1-00216230 \$621.50 S2 LTS 11, 12 & S2 W2 VAC ALY BET LTS 12 & 13, Subd-CHAPMANS ADD TO GARNETT Blk- 14 Sec-30 Twp-20 Rng-20
THOMAS R YOUNG 1-02601740 Acres-3.00 \$23.04 BEG 330'E NW COR SW4,S 660', E 330', N 660', W 330' TO POB EX S, OF CK Sec-35 Twp-20 Rng-17
TERRY L & SANDRA K ZOOK 1-03001470 Acres-46.90 \$6,181.06 SW4 SW4 & W2 W2 SE4 SW4 EX BEG 20' E, & 300' N SW COR SW4, N 200', E 200', S, S 200', W 200' TO POB & EX S2 S2 W2 W2 SE4 SW4, Sec-25 Twp-20 Rng-19

Grand Total \$423,973.62'

Notice of budget hearing for Frontier Ext. District #11

(Published in the Anderson County Review on August 20, 2024.)

NOTICE OF HEARING TO EXCEED REVENUE NEUTRAL RATE AND BUDGET HEARING

The governing body of Frontier Extension District #11 Franklin County

will meet on September 10, 2024 at 6:00 pm at Franklin County Annex meeting room for the purpose of hearing and answering objections of taxpayers relating to the proposed use of all funds and the amount of tax to be levied and Revenue Neutral Rate. Detailed budget information is available at Garnett, Lyndon and Ottawa offices and will be available at this hearing.

SUPPORTING COUNTIES Franklin County (home county) Osage County, Anderson County

BUDGET SUMMARY

Proposed Budget 2025 Expenditures and Amount of Current Year Estimate for 2024 Ad Valorem Tax establish the maximum limits of the 2025 budget. Estimated Tax Rate is subject to change depending on the final assessed valuation.

Table with columns: FUND, Prior Year Actual 2023, Current Year Estimate for 2024, Proposed Budget Year for 2025. Rows include General, Debt Service, Less: Transfers, Net Expenditures, Total Tax Levied, Assessed Valuation, and Outstanding Indebtedness.

*Tax rates are expressed in mills. **Revenue Neutral Rate as defined by KSA 79-2988

Frontier Extension District #11

Notice of hearing - Daulton Estate

(First published in The Anderson County Review, Tuesday, August 13, 2024.)

IN THE DISTRICT COURT OF ANDERSON COUNTY, KANSAS

In the Matter of the Estate of BETTY JOY DAULTON, Deceased. Case #AN-2024-PR-000022

NOTICE OF HEARING

THE STATE OF KANSAS TO ALL PERSONS CONCERNED:

You are hereby notified that a petition has been filed in this court by Lewis Ray Needham, named in decedent's last will and testament

as executor, said will being dated January 22, 2019, praying that the will filed with the petition be admitted to probate and record; that petitioner be appointed executor without bond, and petitioner be granted Letters Testamentary.

You are required to file your written defenses to said petition on or before September 4th, 2024, at 9:00 a.m. in the district court in Garnett, Anderson County, Kansas, at which time and place the cause will be heard. Should you fail therein, judgment and decree will be entered in due course upon the said petition.

All creditors are notified to exhibit their demands against the above-captioned estate within the later of either (i) four months from the date of the first publication of this notice as

provided by law or (ii) thirty days after actual notice was given as provided by law to those creditors whose identity is known or reasonably ascertainable; and if their demands are not thus exhibited, they shall be forever barred.

LEWIS RAY NEEDHAM Petitioner

Terry J. Solander #7280 503 So. Oak St. - P.O. Box 348 Garnett, KS 66032-0348 785-448-6131; FAX: 785-448-2475 solander@embarqmail.com Attorney for Petitioner

Ag1313'

Notice of hearing - Gigstad Estate

(First published in The Anderson County Review, Tuesday, August 20, 2024.)

IN THE DISTRICT COURT OF ANDERSON COUNTY, KANSAS

In the Matter of the Estate of: Roberta Gigstad, Deceased. No. AN-2024-PR- 000017

NOTICE OF HEARING

THE STATE OF KANSAS TO ALL PERSONS CONCERNED:

You are notified that a Petition has been filed in this Court by Robert Gigstad, a beneficiary of Roberta Gigstad, deceased, requesting that: the foreign will of Roberta Gigstad, deceased dated September 16, 2008, and codicil to the

will dated May 20, 2021, be admitted to probate and record in this Court; no administration of the Estate is necessary; the will and the codicil be construed, and the following Kansas real estate owned by the decedent, situated in Anderson County, Kansas:

The North 1/2 of the Southeast Quarter of Section 23; the Southwest quarter and the West 3 Acres of the Southeast Quarter, in Section 24, all in Township 20, Range 18, Anderson County, Kansas, containing 243 acres, more or less.

be assigned in accordance with the terms of the Will.

You are required to file your written defenses to the Petition on or before September 18, 2024, at 9:00 a.m.in the District Court, in the city of

Garnett, Anderson County, Kansas, at which time and place the cause will be heard.Should you fail to file your written defenses, judgment and decree will be entered in due course upon the Petition.

Robert Gigstad Petitioner

/s/Gregg H.Thomas Supreme Court# 15954 8000 Foster Overland Park, Kansas 66204 913-385-7213 913-385-7214(fax) thomaslawks@gmail.com Attorneyfor Petitioner

ag2013'

Notice of budget hearing for the City of Westphalia

(Published in the Anderson County Review on August 20, 2024.)

NOTICE OF BUDGET HEARING

The governing body of City of Westphalia

will meet on September 3, 2024 at 6:30 PM at City Hall, 531 Warren St., Westphalia for the purpose of hearing and answering objections of taxpayers relating to the proposed use of all funds and the amount of ad valorem tax. Detailed budget information is available at City Hall and will be available at this hearing.

BUDGET SUMMARY

Proposed Budget 2025 Expenditures and Amount of Current Year Estimate for 2024 Ad Valorem Tax establish the maximum limits of the 2025 budget. Estimated Tax Rate is subject to change depending on the final assessed valuation.

Table with columns: FUND, Prior Year Actual for 2023, Current Year Estimate for 2024, Proposed Budget for 2025. Rows include General, Special Highway, Sewer, Reserve-ARPA, Totals, Revenue Neutral Rate, and Outstanding Indebtedness.

*Tax rates are expressed in mills ** Revenue Neutral Rate as defined by KSA 79-2988

Janet Huss

City Official Title: Clerk

Notice of hearing to amend 2024 budget - City of Westphalia

(Published in the Anderson County Review on August 20, 2024.)

Notice of Budget Hearing for Amending the 2024 Budget

The governing body of City of Westphalia

will meet on the day of September 3, 2024 at 6:30 PM at City Hall, 531 Warren St. for the purpose of hearing and answering objections of taxpayers relating to the proposed amended use of funds.

Detailed budget information is available at City Hall and will be available at this hearing.

Summary of Amendments

Table with columns: Fund, 2024 Adopted Budget, 2024 Proposed Amended. Rows include Sewer.

Janet Huss

Official Title: Clerk

Notice of hearing - Spencer Estate

(First published in The Anderson County Review, Tuesday, August 20, 2024.)

IN THE DISTRICT COURT OF ANDERSON COUNTY, KANSAS PROBATE DEPARTMENT

IN THE MATTER OF THE ESTATES OF WAYNE SPENCER, DECEASED AND GARY W. SPENCER, DECEASED.

Case No. AN-2024-PR-000021 Chapter 59

NOTICE OF HEARING

THE STATE OF KANSAS TO ALL PERSONS CONCERNED:

You are hereby notified that a Petition has

been filed in this Court by Sharon A. Spencer, one of the heirs of Wayne Spencer, deceased, requesting:

Descent be determined of the following described real estate situated in Anderson County, Kansas:

The South Half of Lot One (1), in Block Thirty Eight (38) in the City of Greeley, Anderson County, Kansas.

and all personal property and other Kansas real estate owned by decedent at the time of death. And that such property and all personal property and other Kansas real estate owned by the decedent at the time of death be assigned pursuant to the laws of intestate succession.

You are required to file your written defenses to

the Petition on or before September 18, 2024, at 9:00 A.M., in said Court, in Anderson County, Kansas, at which time and place said cause will be heard. Should you fail to file your written defenses, judgment and decree will be entered in due course upon said Petition.

Sharon A. Spencer, Petitioner EVANS & MULLINIX, P.A. cgotham@emlawkc.com Colin N. Gotham, KS #19538 7225 Renner Road, Suite 200 Shawnee, KS 66217 (913) 962-8700 Attorneys for Petitioner

ag2013'

Public Notice

Your RIGHT to know, guaranteed by Kansas Law.

How much junk... ...is in your trunk?

Place your ad to sell your items today!



It's **EASY** to place your ad! • (785) 448-3121 • (800) 683-4505 • admin@garnett-ks.com

Advertising Rates

Classified Rates:
 Up to 20 Words.....\$6.00
 Each addtl' word.....64¢
 (Commercial).....76¢
 Class Display.....\$9.85/cfm.in.
Run Of Press Rates:
 Standard ROP.....\$9.00/cfm.in.
 Color.....\$65
 Pre-print inserts.....\$158.40
 Front Page
 Masthead Banner (w/color).....\$300
 Bottom Page (w/color).....\$100
 Statewide/multi-state.....Quote

Terms

- Cash in advance
- Visa, Mastercard, Discover
- Credit to established accounts

Deadline

Classified Ads: 10am Friday
 Display Ads: Noon Thursday

Call or send in your ad:

(785) 448-3121
 FAX: (785) 448-6253

EMAIL:

admin@garnett-ks.com

Mail:
 Garnett Publishing, Inc.
 P.O. Box 409
 Garnett, KS 66032



REAL ESTATE

GOLD KEY REALTY

Carla Walter • Owner/Broker
 785-448-7658 (cell)
 www.goldkeyrealtyks.com

View all local properties for sale at our website:
www.KsPropertyPlace.com

Now offering
Auction Services!
 Call
 (785) 448-3999

**MAKE MONEY
 USE THE
 CLASSIFIEDS!!**

Edgecomb Builders



General Contractor
 Custom Homes
 Additions
 Finishing Trimwork
 Remodels

Lonnie Edgecomb (785) 204-1580

Freelance Writer/Reporter

The Anderson County Review is in search of freelance writers who can write feature stories and cover occasional straight news assignments. Some experience preferred but we'll train you if you've got the chops. Remote workers okay – most interviews/ research conducted online, by phone or email. Work from home or from our office in Garnett. Pay is by assignment. Must follow schedules and understand what the word DEADLINE means. Contact publisher,Dane Hicks at review@garnett-ks.com.



Anderson County Sheriff's Department Detention Officer

As of 6-27-2024, the Deputy Sheriff, and Sheriff Secretary positions have been filled. We are looking to hire a full-time detention Officer. Starting wage 18.12 an hour possible increase for experience. You must have a high school diploma, or its equivalent, valid driver license, and be able to pass drug screening, criminal background check and general knowledge test. We work 12 hour shifts and offer health benefits paid vacation and sick days. Apply at 135 E 5th Ave Garnett or call 785-448-5678.



REAL ESTATE



201 N. Maple
 Garnett, Ks 66032
 benjaminrealty@earthlink.net

Property Source, LLC
913-884-4500
 YOUR SOURCE FOR GREAT INVESTMENTS!
 LAND-FARMS
 Investment Property
 RESIDENTIAL

**CALL CRYSTAL METCALFE
 TO SELL YOUR HOME**
 C-(913) 579-5288
 O-(816) 629-4494



HELP WANTED

STATEWIDE ADVERTISING

Send your ad to more than 100 Kansas newspapers for as little as \$300. Ask about other states too!
785-448-3121



MISCELLANEOUS

Injured in an accident? Don't Accept the insurance company's first offer. Many injured parties are entitled to cash settlements in the \$10,000's. Get a free evaluation to see what your case is really worth. 100% Free Evaluation. Call Now: 1-888-920-1883

MISCELLANEOUS

Place your 25-word classified in the Kansas Press Association and 135 more newspapers for only \$300/ week. Find employees, sell your home or your car. Call the Kansas Press Association @ 785-271-5304 today!

Paying top Ca\$h for mens sports watches! Rolex, Breitling, Omega, Patek Philippe, Heuer, Daytona, GMT, Submariner and Speedmaster. Call 844-575-0691

Attention: Viagra and Cialis Users! A cheaper alternative to high drugstore prices! 50 Pill Special - Only \$99! 100% guaranteed. Call now: 1-866-481-0668
Top Ca\$h paid for old guitars! 1920-1980 Gibson, Martin, Fender, Gretsch, Epiphone, Guild, Mosrite, Rickenbacker, Prairie State, D'Angelico, Stromberg. And Gibson Mandolins / Banjos. 855-454-6658

Got an unwanted car??? Donate it to Patriotic Hearts. Fast free pick up. All 50 States. Patriotic Hearts' programs help veterans find work or start their own business. Call 24/7: 855-612-3543.

Fertilization, weed control, seeding, aeration and mosquito control. Call now for a free quote. Ask about our first application special! 1-877-559-9593

Bath & Shower Updates in as little as one day! Affordable prices - No payments for 18 months! Lifetime warranty & professional installs. Senior & Military Discounts available. Call: 855-219-8849

Anderson County news DAILY at 8 a.m. 10.37 FM • 1220 AM **KOFO** 103.7 FM • 1220 AM

JB Construction
 Decks • Siding • Pole Buildings • Garages
Joe Borntreger
 (785) 448-8803 • joe.borntreger@yahoo.com

Anderson County Sheriff's Department Jail Administrator

Anderson County Sheriff's Office is accepting applications for Jail Administrator. Must have a high school diploma/equivalent and a valid driver's license. Responsibilities include: Supervising Staff Scheduling Budgeting and Accounting; Overseeing Vendors; Coordinating transports; Maintaining jail equipment.

Experience in jail operations is a plus. Normal hours are 84 every two weeks M-F, subject to call out. Starting pay is \$19.39/hour, with a possible increase based on experience.

Call 785-448-56768 for the application or stop by 135 E. 5th Ave., Garnett, KS 66032.

ANCOSO is an equal opportunity employer and follows veterans' preferences laws.

Solid Waste Laborer

Anderson County Solid Waste is accepting applications for a full-time laborer. Duties include: running the Recycle Route, moving the recycle trailer every week, baling the recycle materials, running a forklift and upkeep in recycle building. Hours are Mon-Fri. 7:00-3:30 plus one Saturday/month 8:00-12:00. Position includes earned vacation and sick time. Applications available at the landfill located at 25404 NE Nebraska RD, Garnett KS – Questions (785)448-3109.

Anderson County is an Equal Opportunity Employer and position is "Veterans Preference" Eligible (VPE) State Law – K.S.A. 73-201



MISCELLANEOUS

Agging Roof? New Homeowner? Storm Damage? You need a local expert provider that proudly stands behind their work. Fast, free estimate. Financing available. Call 1-877-589-0093 Have zip code of property ready when calling!

Stop overpaying for health insurance! A recent study shows that a majority of people struggle to pay for health coverage. Let us show you how much you can save. Call Now for a no-obligation quote: 1-888-519-3376 You will need to have your zip code to connect to the right provider.

Need New Windows? Drafty rooms? Chipped or damaged frames? Need outside noise reduction? New, energy efficient windows may be the answer! Call for a consultation & free quote today. 1-866-766-5558 You will need to have your zip code to connect to the right provider.

Water Damage Cleanup & Restoration: A small amount of water can lead to major damage and mold growth in your home. Our trusted professionals do complete repairs to protect your family and your home's value! Call 24/7: 1-877-586-6688. Have zip code of service location ready when you call!

AUCTIONS

HOAGBA/Gardner - Exotic Bird & Small Animal Auction, September 14, 8:00 a.m. Fairgrounds, Gardner, KS. For infor and consignments: call (913) 879-2587 or go to https://hoagbagardnerauction.org/ or facebook group https://www.facebook.com/groups/524014985524720/?ref=share ag13t4

MUSIC

Piano tuning/repair - Paul Benner, BA Piano Technology. 45 years, all types, players. (785) 691-8844. my7tf

FARM MACHINERY

585 Case IH - with front loader and hay spear. 3211 hours. \$8,500 OBO. (913) 909-7450. ag20t1*

FARM & AG

American Walnut - buying standing timber. Must have 25 or more trees. Call (916) 232-6781 in St. Joseph for details. fb15tf

SERVICES

Johnathan Edgecomb • (785) 448-3899
 In Business Since 1997
EDGECOMB FLOORING
 SALES & INSTALLATION
 FREE in-home consultation with our MOBILE SHOWROOM!
 SAVE 40% off regular retail pricing on name brand flooring!
**Check out our
 Monthly Specials**
 CARPET • TILE • VINYL
 HARDWOODS • LAMINATE

NOTICES

Alcohol Anonymous meetings. Tuesdays and Thursdays, 7 p.m. 510 S. Oak, Garnett. (785) 241-0586.

ADVISORY BOARD VOLUNTEERS SOUGHT

The Governing Body of the City of Garnett invites interested persons who wish to fill a board vacancy, or who would like to be considered for the next term of any advisory board or volunteer position, vacant or not, to please submit their name and statement of interest to Garnett City Hall for consideration. Currently there are vacancies on the Anderson County Development Agency Board. Statement of Interest forms can be found on our website www.simplygarnett.com or can be picked up at City Hall. If interested, please fill out and submit your forms by September 6th. As always, if you have any questions, feel free to call City Hall at (785) 448-5496 or email info@garnettks.net.



HEAVY EQUIPMENT OPERATOR

THE HIGHWAY DEPARTMENT, Coffey County, KS, is accepting applications for two (2) Full-Time positions of Heavy Equipment Operator. Applications and Job descriptions may be picked up and returned to the Coffey County Highway Department at 1510 S. 6th Street, Burlington, KS. Starting pay up to \$21.05. Selected applicants will have the opportunity to proceed to a structured interview and if an applicant is made a conditional offer of employment, he or she will be asked to submit to a drug screening. Coffey County is an Equal Opportunity Employer and a Veteran's Preference Employer. Coffey County considers applicants for all positions without regard to race, color, religion, sex, national origin, age, the presence of a non-job-related medical condition or disability, or any other legally protected status. Coffey County will not refuse to hire a disabled applicant who is qualified to perform the requirements of the job with reasonable accommodations. Applicants may request reasonable accommodations, during the application/interview process.

Applications will be accepted until position is filled.



Motor Grader Operator

Anderson County is taking applications for a Motor Grader position in the Greeley district until the position is filled. Position will begin September 3, 2024, and is subject to drug testing. Applications and job description are available at the County Road Department, 823 W. 7th Ave., Garnett KS. Anderson County is an Equal Opportunity Employer and position is "Veterans Preference" Eligible (VPE), State Law – K.S.A. 73-201.



HAPPY ADS

Happiness is... subscribing to the Anderson County Review! Call (785) 448-3121. my19tf

Happiness is... shopping Garnett Publishing for copy paper. Good quality paper by the ream or case. Stop by our office at 112 W. 6th today! mc14tf

Happiness is... Having the Review's EagleEye News Drone do aerial photography or videography for your wedding, special event, property survey, promotional video, high-altitude equipment or building inspection, etc. Real-time view from up to 400 feet elevation, up to nearly 1 mile range. Contact the Anderson County Review at (785) 448-3121 for more info. oc11tfn

Happiness is... celebrating your wedding anniversary with a FREE announcement and photo in the Review. Go to www.garnett-ks.com and click the form under "Submit News." Available FREE 24 hours/day! mc1tf

Anderson County EMS honored for third consecutive year

GARNETT, KS (August 16, 2024) - Anderson County Emergency Medical Services (EMS), a department of Anderson County Hospital, has once again received state-level recognition from the Kansas Emergency Medical Services Association (KEMSA). The department brought home two prestigious awards this year.

Sherry Schmitz, advanced emergency medical technician (AEMT) and department lead, was honored as Advanced Life Support (ALS) Provider of the Year, an award presented to an AEMT or paramedic who provides superior patient care, advocates for patients and their families, fosters a positive work environment, and consistently demonstrates professionalism and commitment to continuing education.

In addition to her on-scene response during the mass casualty incident which occurred during the Kansas City Chiefs Super Bowl parade in February, Sherry's nomination cited her lifesaving actions involving an occupant rescued from a residential structure fire and her ongoing commitment to community education.

"Sherry has been a staple in building a more resilient Anderson County," said Troy Armstrong, Anderson County EMS Director.

Sherry joined Anderson County EMS in 2012 and was promoted to a team lead position in 2021, which included taking on added responsibility as the department's education coordinator. Since that time, she has organized and delivered numerous public education courses, including Stop the Bleed, First on the Scene, and CPR/AED training for area businesses and citizens, free of charge.

"By enabling and encouraging community education, we have a growing number of citizens who feel more empowered



Above - From left: Suzi Sykes, Troy Armstrong, Sherry Schmitz, Connie Meyer and Doug Meyer represented Anderson County EMS during the KEMSA 2024 annual conference in Manhattan on Aug. 10.

On right - David Adams, President, KEMSA, presented the 2024 ALS Provider of the Year Award to Sherry Schmitz, AEMT, Anderson County EMS.

to provide initial emergency response to life-threatening emergencies until EMS can arrive on the scene. This kind of public action complements our EMS response and increases the chances of survival for our patients. Everyone benefits, and Sherry had been a driving force for this movement."

Anderson County EMS also received a Community Service Award, presented alongside other Kansas EMS agencies who responded to the Chiefs parade incident.

The award recognized Anderson County EMS and team members Armstrong,



THE ANDERSON COUNTY REVIEW 08-20-2024 / SUBMITTED

Schmitz, and Suzi Sykes, RN, who provided mutual aid to the Kansas City Fire Department at the parade. The three were within 30 yards of the initial shots, and without hesitation,

were among the first on the scene, rushing in to help the wounded. Armstrong accepted the award on behalf of the department.

GLYNN...

FROM PAGE 4

in 2024.

- \$10,000 from Kansas National Education Association PAC, Topeka, KS. ("Last minute" donation reported on Aug. 1.) At the national level NEA gives almost exclusively to Democrats.

Donations to Middle Of The Road in the Jan. 2024 report included:

- \$250,000 from J. B. Pritzker, Illinois. Democratic Governor. Member of the wealthy Pritzker family that owns the Hyatt hotel chain.

- \$132,000 from Democratic Action PAC, Washington, DC. Democratic Governors Association runs ads as "Democratic Action." Laura Kelly is now the chair of DGA.

- \$52,000 from Kansas Values Institute, Lawrence, KS. KVI spent \$23 million in 2022 to help elect Gov. Laura Kelly, who won with a margin of about 22,000 votes.

- \$45,000 from IBEW PAC Educational Fund, Washington. International Brotherhood of Electrical Workers union is a significant donor to Democratic causes.

- \$40,000 from the UFCW International Union. United Food & Commercial Workers only gives to Democratic causes according to Open Secrets.

Now, note the expenditures made by Kelly's PAC: all have connections to the Democratic Party. Is that "middle of the road"?

Kansas Democratic Party got a \$5,000 donation and contribution to Washington Days Sponsorship.

ActBlue got \$3,046 for fundraising expenses. From Wikipedia: ActBlue Charities Inc. is an American political action committee and fundraising platform established for serving left-leaning and Democratic nonprofits and politicians.

NGP VAN is the leading technology provider to Democratic and progressive political campaigns and organizations, nonprofits, municipalities, and other groups, and got \$3,475 from Kelly's PAC.

Waterfront Strategies received \$32,801 to oppose Vic Miller in his bid for State Senate District 18 in the Democratic primary against Patrick Schmidt. (Apparently, Gov. Kelly was not tolerant of some independent views expressed by Miller in the tax negotiations on the floor during the final session).

The PAC's extra \$32,802 expenditure played a part in Miller's defeat on Aug. 6.

Two consultants providing "organizing services" received the "big bucks" from this PAC in monthly payments. It's unclear what specifically "organizing services" are.

Will Lawrence, identified by LinkedIn as Gov. Kelly's Chief of Staff, received \$75,000 according to the most recent report, which when added to the \$30,000 reported in January amounts to a total of \$105,000. Gov. Kelly is Lawrence's direct boss and should be quite familiar with all aspect of the PAC from that association alone.

Lauren Fitzgerald received \$57,000 in according to the most recent report, which when combined with previous earnings now total \$82,700. Fitzgerald is the managing director of "Kansas Coalition for Common

Sense" according to her LinkedIn page and held the post of the Communications Director for Gov. Kelly in 2022.

It's unclear why both consultants received three payments of equal amounts on Jan. 5, 2024. Will Lawrence received three \$7500 payments that day that totaled \$22,500, while Lauren Fitzgerald received three \$6,000 payments that day that totaled \$18,000. It's also unclear why the address for Lawrence and Fitzgerald (and a few others) is the same as the address of the PAC: PO Box 4504, Overland Park.

A year ago I posted an item on X about a coincidence in the first few followers of the Middle of The Road PAC being from the Kansas Coalition for Common Sense.

But it was no coincidence. These three directors (All, Fitzgerald and Zeigler) of Kansas Coalition for Comment Sense had a plan for how they would be working with the "Middle of the Road" PAC to promote progressive causes in Kansas in 2024.

Ashley All, the president of the Kansas Coalition for Common Sense, also has past connections to Gov. Kelly, having served as Kelly's communications director. The non-profit articles of incorporation indicate Jordanna Zeigler is a director of the KCFCNS nonprofit, but is also the current political director for the Democratic Governors Association, now chaired by Gov. Kelly.

Zeigler's work has impacted Kansas for a number of years according to the organization: Jordanna "Jordy" Zeigler, Political Director: Jordy Zeigler was previously the DGA's Senior Campaigns Advisor serving as the organization's lead political and strategic contact for winning campaigns in 2022, including in Kansas, Arizona, Oregon, New Mexico, Minnesota, Illinois, Colorado, and Hawaii. Prior to joining the DGA, Jordy managed Governor Laura Kelly's historic 2018 win in Kansas and Theresa Greenfield's record-breaking campaign for U.S. Senate in Iowa in 2020. Jordy has worked on campaigns of all levels all over the country for over fifteen years, including at EMILY's List and the DCCC.

Most of the money surrounding the Kansas Coalition for Common Sense, a 501(c)(4) nonprofit, will be "hidden" likely until late 2025 or possibly 2026 because of lax reporting requirements for IRS 990s.

For example, the IRS990 for the huge spending by the Kansas Values Institute nonprofit in 2022 was filed with the IRS in late 2023, but was only available early this year. But only about a fourth of the KVI donors have ever been discovered. (Only transfers from one non-profit to another can be discovered.)

What this journey shows us is the electoral playing field is tilted and public views have been distorted by huge progressive spending in Kansas. Governor Kelly's "Middle Of The Road PAC" is far from middle of the road.

To learn more see my video presentation to the Wichita Pacyderm Club on Youtube by searching "Earl Glynn, dark money and nonprofits in Kansas politics."

- Earl Glynn is a data scientist and journalist and operates the substack Watchdog Lab.

Visit Iola & Allen County!

These Iola and Allen County businesses appreciate your patronage and encourage you to visit your local merchants in Allen County!

Flynn Appliance Center
11 N. Jefferson • Iola • (620) 365-2538
M-Th: 8-5 • Fri: 8-4
Large LED TVs Available
Find us in Names & Numbers

IOLA PHARMACY
109 E. Madison • IOLA
(620) 365-3176 or (800) 505-6055
Your hometown full line full service pharmacy.
Free delivery in Iola.
24-hour Prescription Services
VoiceTech Automated Prescription Refill Service

DTI
Diesel & Turbo of Iola
(620) 365-5232
dlayman@dieselandturbo.com
1 S. Walnut • IOLA
David Layman, Mgr.

Harmony Health Herbs
(562) 786-9663
NATURE'S SUNSHINE
Independent Distributor
Scientific Member Discounts
www.natures-sunshine.com

You just proved advertising works! Call (785) 448-3121 to advertise your business today!

PSI, Inc.
See us for all your insurance needs.
Iola
(620) 365-6908

To advertise your business here, call Stacey at (785) 448-3121.

SHOP. EAT. ENJOY.
LOCAL

REAL ESTATE
Brokers and Related Services
Also, be sure to check the Review's Regional Classifieds for listings.

Benjamin Realty
Sherry Benjamin, Broker
Land • Homes • Commercial
201 N. Maple
Garnett, Ks 66032
benjaminrealty@earthlink.net
Office: (785) 448-2550
Home: (785) 241-0532
Cell: (785) 304-2029

AFFORDABLE HOME LOANS
Serving The Area Since 1899
GSSB FDIC
GOPPERT STATE SERVICE BANK
Garnett • Colony • Hepler • Ottawa • Pomona • St. Paul • Walnut

Who knows?
We know. Buy a subscription, then YOU'LL know.
(785-448-3121 • review@garnett-ks.com

Check out the **LAND & HOME REVIEW** for local Real Estate Listings the first Tuesday of each month in
The Anderson County Review

To be added to this once-a-month real estate guide
Contact the Review (785) 448-3121
The Anderson County Review