



# The Anderson County Review



Probitas,  
virtus, integritas  
in summa.

— ONE MEASLY U.S. DOLLAR —  
**August 13, 2019**  
SINCE 1865 152nd Year, No. 39

The official newspaper of record for Anderson County, KS, and its communities. [www.garnett-ks.com](http://www.garnett-ks.com) | (785) 448-3121 | [review@garnett-ks.com](mailto:review@garnett-ks.com)

E-statements & Internet Banking  **GSSB** Member FDIC Since 1899 (785) 448-3111

## Theft spree leads to additional charges

Woman accused of writing hot check to friend to buy her car

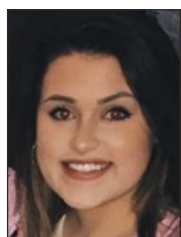
BY DANE HICKS THE ANDERSON COUNTY REVIEW

IOLA — The Garnett woman placed on probation a little more than a month ago for embezzling some \$16,000 from her grandmother and the church at which her grandmother worked will face additional charges for hot checks written in Allen County during that same time period.

Jennifer McSwane was released on \$5,000 bond July 28 after she was charged July 9 with two counts of passing worthless checks back in February of this year, when she was in the throes of an embezzling scheme targeting her grandmother and Life Assembly of God Church in Garnett, where her grandmother was a bookkeeper.

The Allen County charges claim McSwane wrote two checks to Samantha Macklin, one for \$1,400 on Feb. 4 and

SEE MCSWANE ON PAGE 5A



McSwane



THE ANDERSON COUNTY REVIEW 8-13-2019 / DANE HICKS  
Heavy morning dew clings to a spiderweb last Thursday at a location in rural Monroe Township. Intermittent moisture continues a months-old pattern in the local area, with 4.87 inches of rain August 1 and another .38 inches of precip in some areas Sunday morning.

## Man arraigned today in standoff

Charges to be set this morning for man who sparked incident

BY DANE HICKS THE ANDERSON COUNTY REVIEW

GARNETT — The Garnett man who held officers at bay for several hours during a tense standoff in late April at his grandmother's house in Garnett will be arraigned today in Anderson County District Court.

Joseph "Theo" Daulton III, 24, originally faced four felony charges of mistreatment of an elderly person, criminal threat, interference with a law enforcement officer and criminal damage to property in connection with the incident.

Daulton allegedly became embroiled in a dispute with his grandmother, Joy Daulton, the morning of April 24 at her home at 608 N. Maple. She was appar-

ently able to leave the home and with a family friend notified police that Theo Daulton, a convicted felon, was still at the residence with a firearm.

Officers from the Garnett

Police Department went to the house to confront Daulton when he barricaded himself in the house and refused to come out, beginning a

standoff that would last some five hours. Daulton gave himself up only after special tactics officers had begun to move in on the residence. He was the only person in the residence at the time.

Daulton had a previous felo-

SEE DAULTON ON PAGE 2A



Daulton

## USD 365 makes most of non-local funding in 2019 budget plan

BY DANE HICKS THE ANDERSON COUNTY REVIEW

GARNETT — Unified School District 365 in Garnett will raise some \$4.4 million in local taxes to fund a spending plan for the coming year of over \$16.9 million.

The balance of the budget,

greatly made up from federal dollars passed through a number of state conduits in a variety of specific areas of service and instruction, illustrates the heavy dependence of local districts on non-local funds.

The district's assessed prop-

SEE FUNDS ON PAGE 2A

## Blue-green algae: When in doubt, stay out

Officials warn public about presence of algae in state lakes

BY DANE HICKS THE ANDERSON COUNTY REVIEW

TOPEKA — Area boaters and fishermen who frequent Kansas lakes in the region may want to take extra precautions, after state officials issued public health advisories for blue-green algae last week for a number of the state's lakes.

Kansas Department of Health and Environment (KDHE), in conjunction with the Kansas Department of Wildlife, Parks and Tourism (KDWP), issued both warnings and watches for the following lakes:

- Big Eleven Lake, Wyandotte County (unchanged)
- Camp Hawk Lake, Harvey County (upgraded from 8/1)
- Gathering Pond near Milford (Hatchery Supply Pond), Geary County (unchanged)
- Jerry Ivey Pond, Saline County (unchanged)
- Lake Afton, Sedgwick County (upgraded from 8/1)
- Lakewood Park Lake, Saline County (new)
- Lebo Kids' Pond, Coffey County (unchanged)
- Marais des Cygnes Wildlife Area (new)
- Marion County Lake, Marion County (unchanged)
- Melvern Outlet Pond, Osage County (unchanged)
- Melvern Swim Pond, Osage County (unchanged)

- Neosho State Fishing Lake, Neosho (new)
- South Lake, Johnson County (unchanged)
- Westlake in Gage Park, Shawnee County (unchanged)
- When a warning is issued, KDHE recommends the following precautions be taken:
- Lake water is not safe to drink for pets or livestock.
- Lake water, regardless of blue-green algae status, should never be consumed by humans.
- Water contact should be avoided.
- Fish may be eaten if they are rinsed with clean water and only the fillet portion is consumed, while all other parts are discarded.
- Do not allow pets to eat dried algae.
- If lake water contacts skin, wash with clean water as soon as possible.
- Avoid areas of visible algae accumulation.
- Watches:
- Carousel Lake (Gage Park), Shawnee County (unchanged)
- Hiawatha City Lake, Brown County (unchanged)
- Hodgeman County State Fishing Lke, Hodgeman County (unchanged)
- Keith Sebelius Reservoir, Norton County (unchanged)
- Lake Shawnee, Shawnee County (unchanged)
- Lovewell Reservoir, Jewell County (unchanged)
- Marion Reservoir, Marion County (unchanged)
- Rock Garden Pond (Gage Park), Shawnee County (unchanged)



THE ANDERSON COUNTY REVIEW 8-13-2019 / MINNESOTA SPOKESMAN-RECORDER  
Kansas officials are warning fishermen, boaters and members of the general public about the levels and dangers of blue-green algae being found in a number of the state's public bodies of water. The annual summer bloom of the algae is deemed not safe for humans, pets or livestock.

During the watch status, a watch means that blue-green algae have been detected and a harmful algal bloom is present or likely to develop. People are encouraged to avoid areas of algae accumulation and keep pets and livestock away from the water.

KDHE recommends the following precautions be taken:

- Signage will be posted at all public access locations
- Water may be unsafe for humans/animals
- Avoid areas of algae accumulation and do not let people/pets eat dried algae or drink

SEE ALGAE ON PAGE 2A

## SBA offers low-interest federal disaster loans

SACRAMENTO, Calif. — Low-interest federal disaster loans are now available to certain private nonprofit organizations in Brown, Ness, Osborne, Smith, Stafford, Wallace and Wyandotte counties following the amendment to President Trump's June 20, 2019, major disaster declaration for Public Assistance as a result of severe storms, straight-line winds, tornadoes, flooding, landslides and mudslides that occurred April 28 - July 12, 2019, announced acting Administrator Christopher M. Pilkerton of the U.S. Small Business Administration. Private nonprofits that provide essential services of a governmental nature are eligible for assistance.

These low-interest federal disaster loans are available in Allen, Anderson, Atchison, Barber, Barton, Brown, Bourbon, Butler, Chase, Chautauqua, Cherokee, Clark, Clay, Cloud, Coffey, Comanche, Cowley, Crawford, Dickinson, Doniphan, Douglas, Edwards, Elk, Ellsworth, Ford, Franklin, Geary, Gray, Greenwood, Harper, Harvey, Hodgeman, Jefferson, Kingman, Leavenworth, Lincoln, Linn, Lyon, Marion, Marshall, McPherson, Meade, Montgomery, Morris, Nemaha, Neosho, Ness, Osage, Osborne,

SEE LOANS ON PAGE 2A



I'm not saying your perfume is too strong. I'm just saying the canary was alive before you got here.

# NEWS IN BRIEF

## FRIENDS OF THE PSRT TO MEET

The Friends of the Prairie Spirit Rail Trail will meet Wednesday, August 14, 2019 at 7 p.m. at The Depot.

## GARNETT PUBLIC LIBRARY CELEBRATES WOODSTOCK

Hey dude, it's the 50th anniversary of Woodstock!!!! The Garnett Public Library is celebrating this righteous occasion by having a rad tie dye party! You provide the white cotton t-shirt and we will provide the dye, totally awesome snacks, groovy tunes, trivia and lots of fun!!!! Join us on Thursday, August 15th between 4 & 7. This is a come and go event for all ages (kids under 10 must be accompanied by an adult). For more info call Nancy at 448-3388.

## RICHMOND COMMUNITY BUILDING FUNDRAISER

Their will be a breakfast fundraiser at the Richmond Community Building on Saturday, August 17th from 7 a.m. - 10 a.m. Take out boxes and local delivery available. Call 835-6465 the day of for delivery. Free-will donation! All proceeds will go towards much needed repairs to the building.

## JASPER-O'DELL MEMORIAL HORSE PULL

The annual Jasper-O'Dell Memorial Horse Pull will be Saturday August 17th in Bush City. The pony pull will start at 1:30 p.m., the draft horse pull at 3:30 p.m. and a street dance will begin at 7 p.m. There will be concessions and a few activities for the kids as well.

## ACHS GRADUATES SCHOLARSHIP OPPORTUNITY

Beginning with the Fall semester of 2019, a \$2,000 per semester scholarship will be available for Anderson County High School graduates who are enrolled in an associate degree, bachelor of science degree or graduate degree in a professional nursing program. Emphasis in awarding the scholarship will be placed on financial need and the personal commitment the applicant has toward the caretaking involved in professional nursing. To apply for this generous scholarship please go to [www.usd365endowment.com](http://www.usd365endowment.com) to download an application or contact the USD 365 Endowment Association at PO Box 16, Greeley, KS. 66033 to request a print application.

## LOANS...

FROM PAGE 1

Ottawa, Pawnee, Phillips, Pottawatomie, Pratt, Reno, Rice, Riley, Rush, Russell, Saline, Smith, Stafford, Sumner, Wabaunsee, Wallace, Washington, Wilson, Woodson and Wyandotte counties.

"Private nonprofit organizations should contact Public Assistance Officer Christina Flyntz of the Kansas Division of Emergency Management by calling (785) 646-2523 or emailing Christina.Flyntz.KDEM@gmail.com to obtain information about applicant briefings. At the briefings, private nonprofit representatives will need to provide information about their organization," said Director Tanya N. Garfield of SBA's Disaster Field Operations Center-West. FEMA will use that information to determine if the private nonprofit provides an "essential governmental service" and is a "critical facility" as defined by law. If so, FEMA may provide the private nonprofit with a Public Assistance grant for their eligible costs. If not, FEMA may refer the private

## ANDERSON COUNTY COMMISSION AUGUST 5, 2019

Chairman Jerry Howarter called the meeting of the Anderson County Commission to order at 9:00 AM on August 5, 2019 at the County Commission Room. Attendance: Jerry Howarter, Present: David Pracht, Present: Leslie McGhee, Absent: The pledge of allegiance was recited. Minutes from the previous meeting were approved as presented.

### Road & Bridge

Lester Welsh, Road Supervisor, met with the commission. He gave an update on what roads the department is working on and paving of Bush City road.

### Planning & Zoning

Tom Young, Planning & Zoning Director, met with the commission. He would like to invite the commissioners to the Flood Zone Map meeting that is being held on August 6th, 2019 from 2pm-7pm at the Church of the Nazarene.

### County Clerk

Julie Wettstein, Anderson County Clerk, met with the commission. She presented a quote for 4 new computers with the Windows 10 upgrade for her office. The quote is for \$5,740. Commissioner Pracht moved and Commissioner Howarter seconded to purchase 4 computers plus install from Advantage Computers for \$5,740 to be paid out of the Clerk Technology fund. All voted yes.

### Jackson Township

Commissioner Pracht moved and Commissioner Howarter seconded to appoint Lucille Stone as Township Trustee and Damon Stone as Township Clerk. All voted yes.

### Sheriff

Vern Valentine, Sheriff, met with the commission. He wanted to inform the commission that the roof on the jail is leaking and will be looking into having it repaired.

### Adjourn

Meeting adjourned at 12:00 PM due to no further business.

### LAND TRANSFERS

Charles E Nixon and Clara Ann Nixon to Home Farms LLC: Beginning at SWCOR N2 NW4 33-21-21, thence north 330', thence south 1320', thence south 330', thence west 1320' to POB; and S2 NW4 33-21-21.

Kendall L Eichman and Debra L Eichman to Kendall L Eichman Trustee, Debra L Eichman Trustee and Kendall L & Debra L Eichman Living Trust Dated 11-19-2004: Beginning at NECOR W2 NE4 36-20-17, thence west along section line of an assumed bearing of south 90°00'00" west a distance of 191.12 feet; thence south 00°09'43" east a distance of 1325.64 feet thence north 90°00'00" east a distance of 191.12 feet to east line of said W2 NE4; thence north 00°09'43" west a distance of 1325.64 feet to POB; said tract contains 5.82 acres, more or less.

Vernon Settlemeyer and Ruth Settlemeyer to Gerald Hiatt and Junella Hiatt: The S/2 of NE/4 and 30 acres off the east end of the NE/4 of the NE/4, all in 11-23-17, less the following tract: A tract beginning at the NE corner of the NE/4 of 11-23-17, thence west 990 feet; thence south 352 feet; thence east 990 feet; thence north 352 feet to the POB.

Brenda Jean Lyman and Brenda Jean Evans F/K/A to David W Evans Jr: Undivided 1/3 interest in: NE4 19-19-21.

### ANDERSON COUNTY SHERIFF'S DEPARTMENT ACCIDENT REPORTS

On July 18, a vehicle driven by William Johnston, Kincaid, was westbound on K-31 when a deer ran from the roadside and into the path of the vehicle causing the vehicle to strike the deer. The driver continued to his destination which was approximately 1/2 mile.

On July 21, a vehicle driven by James Priddy, Concord, MA, left the roadway as the driver fell asleep and when he awoke overcorrected causing

the vehicle to overturn.

On July 24, a vehicle driven by Tanya Ewert, Garnett, was traveling eastbound on 1700 Road when a deer ran out in front of the vehicle causing her to hit the deer.

On July 31, a vehicle driven by Donna Smith, Westphalia, was northbound on Barton Road when a deer ran from a cornfield to the east and into the path of the vehicle causing the vehicle to strike the deer, impacting the windshield on the driver's side.

On July 31, a vehicle driven by Mitchell Highberger, Westphalia, was northbound on Barton Road as it was raining hard with low visibility and heavy winds when he went into the east side of the ditch causing the truck to roll onto the side and in the process destroying approximately 94' of barb wire fence and some posts.

On August 2, a vehicle driven by Rachel Smith, Moran, was traveling eastbound on K-58 Highway when she struck a deer just before the 40 mile marker.

### LIMITED ACTION CASES FILED

The Kansas Department of Revenue has filed a State Tax Warrant against Bs Cvf Inc. for \$4,476.89 for March and May of 2019.

Kimberly Nevius and Shawn Gill filed a Friendly Suit for Approval of Wrongful Death Settlements to receive funds from AllState to settle their claim of the wrongful death of Richard Money.

SCLHS St Francis Health Center has filed suit against Jordan Morrissey for \$934.22 plus costs and interests for unpaid services.

Garnett Development Company LP has filed a Petition for Eviction against Cassandra Jewell and Shawn Shepard for unpaid rent.

### DOMESTIC CASES FILED

David Womelsdorf, Colony, and Joanna Martin, Stockton, have filed for a Marriage License.

Glenda Whalen, Lawrence, has filed a Petition for Annulment against Terry Sutcliffe, Lawrence.

Kaitlynn Miller, Topeka, has filed a Petition for Divoce against Cody Carter, Topeka.

Rachelle Slyter, Gardner, has filed a Petition for Divorce against Gerald Slyter II, Welda.

The State of Kansas has filed a Petition to Determine Paternity against Travis Harrell.

Jillian John, Kansas City, has filed a Petition for Divorce against Logan John, Wahiawa, HI.

The State of Kansas has filed a Petition for Support against Stephanie Henderson as DCF provided \$252 in cash assistance that the respondent is liable to pay.

### ANDERSON COUNTY SHERIFF'S TRAFFIC CASES FILED

Taylor Fergola was charged with speeding 82 mph in a 65 mph zone, \$195.

Madilyn Vyhldal was charged with speeding 83 mph in a 65 mph zone, \$201.

Alexander Craig was charged with speeding 84 mph in a 65 mph zone, \$207.

William Stackhouse was charged with speeding 91 mph in a 65 mph zone, \$267.

Brayden Meyer was charged with speeding 83 mph in a 65 mph zone, \$201.

Ashlee Geiler was charged with speeding 80 mph in a 55 mph zone, \$258.

Scott Ford was charged with speeding 75 mph in a 65 mph zone, \$153.

Bobbi Gill was charged with speeding 75 mph in a 65 mph zone, \$153.

Lacy Lutes was charged with speeding 75 mph in a 65 mph zone, \$153.

Kenneth Laforge was charged with speeding 75 mph in a 65 mph zone, \$153.

Noah Stucky was charged with failure to wear a seatbelt, \$30.

Samantha Hadden was charged with failure to wear a seatbelt, \$30.

Damion Sadler was charged with failure to wear a seatbelt, \$30.

Stacey Hitzelberger was charged with failure to wear a seatbelt, \$30.

Donald Carriger was charged with driving under the influence, transporting an open container and improper driving on a laned roadway.

### ANDERSON COUNTY SHERIFF'S DEPARTMENT ARRESTS

On July 31, Austin Phillips, LaCygne, was arrested for failure to appear.

On July 31, Brenda Castaldi, Osage City, was arrested for criminal damage to property.

On July 31, Timothy Starr, Garnett, was arrested for aggravated assault and criminal threat.

On August 1, Mitchell Highberger, Westphalia, was arrested for failure to report an accident with damage and no proof of insurance.

On August 2, Shane Sams, Welda, was arrested to serve a court ordered sentence.

On August 4, Jennifer Spurlock, Ottawa, was arrested to serve a court ordered sentence.

On August 5, Justin Baldwin, Butler, MO, was arrested for failure to appear.

On August 5, Heather Blurton, Parker, was booked into jail as a hold for Vernon County as she was arrested for failure to appear.

On August 5, Samuel Shelton, Lawrence, was booked into jail as a hold for the Douglas County Sheriff Department as he was arrested for possession of certain stimulations with a prior conviction.

On August 5, Peyton Baxter, Eudora, was booked into jail as a hold for the Douglas County Sheriff Department as he was arrested for possession of certain stimulations with a prior conviction.

On August 5, Nathan Harris, Lawrence, was booked into jail as a hold for the Douglas County Sheriff Department as he was arrested for domestic battery and a probation violation.

On August 5, Tierra Walker, Iola, was arrested for failure to appear.

On August 7, Tami Gould, Garnett, was arrested for driving while suspended or revoked, no vehicle liability insurance and possession of certain hallucinogenic drugs.

On August 7, Austin Phillips, LaCygne, was booked as a hold for the Paola Police Department as he was arrested for a warrant.

On August 7, Kevin Davis was booked as a hold for the Douglas County Sheriff Department as he was arrested for battery.

On August 7, Ivan Oldenburg, Parsons, was booked as a hold for the Linn County Sheriff Office as he was arrested for a probation violation.

### ANDERSON COUNTY JAIL ROSTER

Amos Miller was booked into jail on August 13, 2018.

Jon Leatherman was booked into jail on February 21, 2019.

Harley Crook was booked into jail on April 1, 2019.

Joseph Daulton was booked into jail on April 24, 2019.

Gary Henning was booked into jail on April 25, 2019.

Chadley Mueller was booked into jail on May 6, 2019.

Jake Magner was booked into jail on May 20, 2019.

Michael Watts was booked into jail on June 22, 2019.

Stephanie Knavel was booked into jail on June 22, 2019.

Cody Meeker was booked into jail on June 28, 2019.

Nathan Thompson was booked into jail on June 28, 2019.

Darren Dicenzo was booked into jail on July 22, 2019.

David McAfee was booked into jail on July 25, 2019.

Jessica Orange was booked into jail on July 28, 2019.

Justin Baldwin was booked into jail on August 5, 2019.

Tierra Walker was booked into jail on

August 5, 2019.

### ANDERSON COUNTY JAIL FARM-INS ROSTER

Jimmy Miller was booked into jail on January 5, 2018.

Savannah Capp was booked into jail on August 20, 2018.

J.D. Lane was booked into jail on November 7, 2018.

Mason Williamson was booked into jail on November 7, 2018.

Christopher Conner was booked into jail on April 24, 2019.

Steven Vickrey was booked into jail on May 10, 2019.

Chelsea Pickett was booked into jail on May 13, 2019.

Shawn Maxwell was booked into jail on May 15, 2019.

Mathew Lanham was booked into jail on May 21, 2019.

Shawn Cox was booked into jail on June 10, 2019.

Paige Flanery was booked into jail on June 10, 2019.

Alexander Muir was booked into jail on June 10, 2019.

James Burris was booked into jail on June 21, 2019.

Robert Brierley was booked into jail on June 21, 2019.

Ivan Oldenburg was booked into jail on July 7, 2019.

Carl Wolfe was booked into jail on July 10, 2019.

Vaughn Burns was booked into jail on July 10, 2019.

Arturo Romero was booked into jail on July 18, 2019.

Charles Kirsh was booked into jail on July 19, 2019.

Ryan Ruhlessin was booked into jail on July 19, 2019.

Montrel Drayton was booked into jail on July 30, 2019.

Peyton Baxter was booked into jail on August 5, 2019.

Samuel Shelton was booked into jail on August 5, 2019.

## FUNDS...

FROM PAGE 1

erty valuation will increase from \$82.8 million to \$85.9 million, the result of higher values ascribed to various types of property in the district based on comparison sales and other factors by the county appraiser's office. The district's local mill levy remains virtually unchanged from 53.261 to 53.289, though actual spending before transfers from the previous year will increase \$2.3 million.

The tax levy will generate some \$4,448,560 from local property owners in the coming year, about \$156,000 more than last year. Those local payments in the end will fund only some 26 percent of planned district spending for

## Charles and Peggy Carlson win duplicate bridge

Charles and Peggy Carlson took first place at the duplicate bridge match August 7th in Garnett.

Steve Brodmerkle and Anita Dennis came in second.

## ALGAE...

FROM PAGE 1

contaminated water. • Swimming, wading, skiing, and jet skiing are discouraged near visible blooms • Boating and fishing are safe. However, inhalation of the spray may affect some individuals. Avoid direct contact with water, and wash with clean water after any contact. • Clean fish well with potable water and eat fillet portion only.

KDHE samples publicly-accessible bodies of water for blue-green algae when the agency receives reports of potential algae blooms in Kansas lakes. Based on sampling results, KDHE reports on potentially harmful conditions.

Kansans should be aware that blooms are unpredictable. They can develop rapidly and may float around the lake, requiring visitors to exercise their best judgment. If there is scum, a paint-like surface or the water is bright green, avoid contact and keep pets away. These are indications that a harmful bloom may be present. Pet owners should be aware that animals that swim in or drink water affected by a harmful algal bloom or eat dried algae along the shore may become seriously ill or die.

For information please visit [www.kdheks.gov/algae-illness/index.htm](http://www.kdheks.gov/algae-illness/index.htm)

the year.

Superintendent Don Blome noted a number of differences in the coming year's budget, including increases in the general fund due to state aid increases approved by the Kansas Legislature this year. Blome also said the budget reflects more expenses in the At-Risk line item (students judged "at risk" of not graduating due to various issues) due to a new mandate forcing the transfer of Local Option Budget funds to At-Risk.

Blome said the line item for Gifts and Grants Funds will be up this year, due to donations for the new automotive service training facility from the Goppert Foundation, MFA Oil and Joyce and Frank Martin.

Dave Leitch and Jim Johnson placed third.

The Garnett Duplicate Bridge Club invites all bridge players to join us Wednesday at 1:00 at the Garnett Inn.

# Visit Miami County!

These Miami County businesses appreciate your patronage and encourage you to visit your local merchants in Miami County!

**Coach Light**  
545 Main, OSAWATOMIE  
913-755-2514  
LADIES' FASHIONS • GIFTS  
W-TH-F 10-5 / SAT. 10-3 / CLOSED MON. & TUES.

**PARK PLAZA LIQUOR**  
COLDEST BEER IN TOWN  
Our wine selection is unsurpassed!  
1403 Baptiste Dr. M-Sat 9am-11pm  
PAOLA • 913-557-5600 Sun Noon-8pm

To advertise your business here contact Stacey at (785) 448-3121.

Family service from one of Garnett's own hometown families!  
**MIDWEST COLLISION INC.**  
31570 Old KC Rd. • PAOLA • (913) 294-4016

## DAULTON...

FROM PAGE 1

ny conviction for criminal threat. The arraignment will set a followup court date on the case. Daulton is presently being held in the Anderson County Jail in lieu of bond.



**ROBERTS**

OCTOBER 25, 1943 - AUGUST 3, 2019

Douglas Eugene Roberts, age 75, of Richmond, Kansas, passed away on Saturday, August 3, 2019, at his home.



Roberts

Doug was the second of ten children born to Herbert Joseph and Nancy Pauline (Nelson) Roberts. He was born on October 25, 1943, at Kansas City, Missouri. Doug's family lived in numerous places throughout his younger years. He later lived with his grandmother in Kansas City, and attended Paseo High School before entering the U.S. Navy. While serving in the Navy he met his future wife, Joyce Ewert. They were united in marriage on July 25, 1962, in Iola, Kansas. This union was blessed with two children, Michael and Thresea. They originally made their home in Kansas City, before moving to Belton, Missouri. In 1972 they moved to their current home in Richmond. Doug retired from his work at the K-Mart Warehouse in Lawrence, Kansas after thirty years. While living in Kansas City he had served on the KCMO Police Department. He also worked for the Belton Fire

Department, and was Police Chief of Richmond before going to work in Lawrence.

He loved to ride his Goldwing motorcycle on day trips. Doug always had an interest in working on his family's cars. He was a Fourth Degree Member of the Knights of Columbus Council #2680, Scipio, Kansas.

Doug was preceded in death by his parents; his son, Michael Roberts on July 6, 2009; an infant brother; three additional brothers, Joe, Terry, Ricky and four sisters, Sheila Hernandez, Paulette Brewer, Sandy Dannenbrock and Nancy Hernandez.

He is survived by his wife, Joyce Roberts, of the home; daughter, Thresea Smith and husband Travis of Garnett, Kansas; two grandchildren, Megan Marnell and husband, Jason and Tristan Smith; sister, Bonnie Hernandez and husband Joseph of Osawatomie, Kansas;

Funeral services were held Friday, August 9, 2019, at the Feuerborn Family Funeral Service Chapel in Garnett, Kansas. Burial followed in the Garnett Cemetery.

Memorial contributions may be made to Knights of Columbus Scipio Council #2680 and left in care of the funeral home.

**SWIFT**

AUGUST 1, 1959 - AUGUST 4, 2019

Dale Swift, age 60, of Colony, Kansas passed away on August 4, 2019, at the University Of Kansas Hospital, Kansas City, Kansas.

Dale was born in Iola, Kansas on August 1, 1959. He was born to Robert Elmer Swift and Charlotte Arvada (Lammon) Swift.

Dale married Jackie Crawford, they later divorced. Dale later married Siobhan McGuire, they later divorced.

Services for Dale were Saturday, August 10, 2019, at the Colony Community Church. Burial followed in the Colony Cemetery.

**Obituary charges:**

Full obituaries are published as submitted in the Review at the rate of 15¢ per word and include a photo at no charge. Abbreviated death notices are published at no charge. A photo may be added to a death notice for a \$10 fee. Payment may be made through your funeral home or directly to the Review.

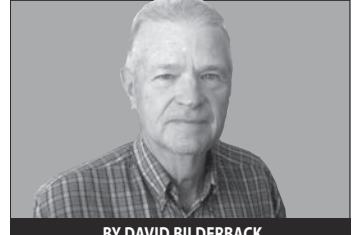
Please call or email if you have questions.

(785) 448-3121 •

review@garnett-ks.com

**What will we say?**

**WEEKLY DEVOTIONAL**



BY DAVID BILDERBACK

In one of his lectures Dr. R. C. Sproul asked the following question. "If you died today and stood before God and God asked why he should let you into his kingdom what would you say?" That gives me pause for thought. He received the following answers from those he asked.

1) I believe I have done more good things than bad and on that basis I believe I should be admitted into the kingdom.

2) There are a lot of people who are worse than I am.

3) God is good and would not deny heaven to anyone.

4) I believe everyone will end up in heaven, we will just choose different paths.

There is one common thread throughout all these answers. Everyone of them requires that God accept that person based on some degree of personal merit. Now the next step is to find out what requirements the Bible sets out about what is required to enter the kingdom.

In Paul's letter to the Ephesians he states. "For it is by grace you have been saved through faith -and this not from yourselves it is the gift of God-not by works so that no one can boast." (Ephesians 2:8-9) If this is truly a gift as Paul states this removes any opportunity there is for our good works to outweigh our bad. A gift is free. The good works that we do are the product of the gift we receive. We are not saved merely for our own benefit but we are saved unto good works.

This brings us to the statement. There are a lot of people worse than I am. It is not a good idea to measure ourselves against someone else. If we are saved by grace, which is defined as God's unmerited favor then there can be no merit in us or the other people we are comparing ourselves to.

en we will just choose different paths. In John14:6 Jesus refutes this by saying, "I am the way and the truth and the life. No one comes to the Father except through me." Jesus makes it clear there is only one path to heaven. Christ died on the cross. There is no gospel except that of Christ's substitution in our place whereby God imputed to Jesus our sin and Jesus imputed to us his righteousness. There is no basis for our acceptance before God except on Christ's saving work. It is appointed onto everyone to die then we will stand in front of God. The question then becomes what will we say?

Ministry on the Holiness of God.  
Author of the book,  
"On the Other Side of the Door"  
Like David Bilderback  
on Facebook

**SUMMER Savings**

**STOCK UP & SAVE!**  
All Products and Sizes on Sale!

**OILS & LUBRICANTS \$1.00 OFF PER GALLON**

**GREASES 40¢ OFF PER POUND**

**MFA OIL Premium Lubricants**

**704 N MAPLE ST GARNETT, KS www.mfaoil.com**

**HURRY! SALE ENDS AUGUST 30 ORDER TODAY • 785-448-5512**

**REEBLE MONUMENTS**

|   |   |   |
|---|---|---|
| <b>Iola Location:</b><br>202 S. State St.<br>Iola, KS 66749<br>620-363-5005 | <b>Emporia Location:</b><br>1 S Commercial St.<br>Emporia, KS 66801<br>620-342-5573 | <b>Ottawa Location:</b><br>233 W 23rd St.<br>Ottawa, KS 66067<br>785-229-0684 |
|---|---|---|

**Anderson County Area Religious Services Directory**

**BECKMAN MOTORS**  
North Hwy. 59 in Garnett, KS • (785) 448-5441

**BUICK**  
www.beckmanmotorsinc.com

**The Anderson County Review**

**GARNETT PUBLISHING, INC**  
112 W. SIXTH AVE., GARNETT  
(785) 448-3121

**LeRoy Coop**  
www.leroycoop.coop

LeRoy Toll Free 1-888-964-2225  
LeRoy Tire Shop Toll Free 1-888-964-2288  
Westphalia Toll Free 1-877-489-2521  
Westphalia Tire Shop (785) 489-2216  
Gridley Toll Free 1-877-836-2860

**KOFO 1220AM**  
Anderson County News  
Mon - Fri 8:00am  
Country Favorites

**THE TRADING POST**  
25,000 customers read us EVERY WEEK just for your ads!  
(785) 842-6440 • (800) 683-4505  
ads@tradingpostdeals.com

**COUNTRY MART**  
Hwy 59 at Hwy 31 • GARNETT

Your only locally-owned bank.

**Patriots Bank**  
131 E. 4th Ave • PO Box 327 • Garnett, KS  
(785) 448-3191

If you would like to advertise your business in this directory, call Stacey at 785-448-3121 or email review@garnett-ks.com

**TRINITY BAPTIST CHURCH**  
Sunday Fellowship Time 9:30am  
Sunday Service 10:30am  
Wednesday 7pm  
East 6th & Hwy 169, Garnett, KS  
Pastor - Joshua Ford (785) 304-6581

**CHURCH OF THE NAZARENE**  
Sunday School 9am  
Sunday Service 10:00am  
Small Groups 6:30pm  
Bible Studies Wednesday 7pm  
258 W. Park Road, Garnett, KS.  
(785) 448-3208  
Senior Pastor - Jonathan Hall  
Childrens' Pastor - Sarah Pridey  
Jordan Dages - Teen Ministries

**LIFE ASSEMBLY OF GOD CHURCH**  
Sunday School 9:45am  
Sunday Worship 11am, 6pm  
Wednesday Bible Study 6pm  
Park Road, Garnett, KS  
(785) 248-8806  
Pastors - Glenda & Joe Johnson

**TRINITY LUTHERAN CHURCH**  
Sunday School 9am  
Sunday Worship 10am  
Bible Study - Wednesday 7pm  
(785) 448-6930  
Hwy 31 & Grant, Garnett, KS

**KINCAID SELMA UNITED METHODIST CHURCH**  
Worship 9am  
Sunday School 10:15 a.m.  
709 E. 5th St., Kincaid, KS  
Pastor - Bill Nelson  
Church Office (620) 439-5773

**ST. TERESE CATHOLIC CHURCH**  
Worship Service Saturday 5pm  
Richmond, KS  
Fr. Gerald Williams  
(785) 835-6273

**NORTHCOTT CHURCH**  
Sunday Morning Bible Study 9am  
Sunday Worship 10am  
12425 SW Barton Rd., Colony, KS 66015  
(620) 228-9324

**FIRST BAPTIST CHURCH**  
Sunday School 9:30am, Morning Svc. 10:30am  
Evening Svc. 6pm  
Wed. evening prayer time 6:30pm  
Transportation - Call before 8:30  
(785) 448-5749  
417 South Walnut, Garnett, KS

**BEACON OF TRUTH**  
Sunday Worship Service 10:00am  
Hwy 59 & Allen Rd., Richmond, KS  
(785) 229-5172  
Pastor - Reuben Esh

**COLONY CHRISTIAN CHURCH**  
Cross Training 9:45am  
Sunday Worship 10:45am  
306 Maple, Colony, KS 66015  
(620) 852-3200  
Pastor - Chase Riebel

**FIRST CHRISTIAN CHURCH**  
www.fccgarnett.org  
Early Worship 8am  
Sunday School (All Ages) 9:15am  
Second Worship Service 10:30am  
Children's Church 10am  
Nursery Provided  
Second & Walnut, Garnett, KS  
(785) 448-3452  
Chris Goetz, Pastor  
Ryan McDonald, Youth Pastor

**COLONY COMMUNITY CHURCH**  
Sunday Worship 9:30am  
Sunday School 10:30am  
Risen & Rockin' Sunday School Service 10:35am  
(620) 852-3237  
Colony, KS 66015  
Pastor - Steve Bubna

**FIRST BAPTIST CHURCH KINCAID**  
Sunday School 9:30am  
Church 10:45am, Eve Worship 7pm  
Wednesday Bible Study 7pm  
3rd & Osage, Kincaid, KS  
(620) 439-5311  
Pastor - David Hill

**UNITED METHODIST CHURCH**  
Sunday School 10 a.m.  
Sunday Worship 10:30am  
Bible Study Wed. 10am/Thurs 7pm  
Chancel Bells Wed 6pm  
Chancel Choir Sun 9am  
Jr. & Sr. UMYF Sundays  
U.M. Women 1st Wednesday  
(785) 448-6833  
2nd & Oak, Garnett, KS  
Reverend - Bill Driver

**UNITED METHODIST CHURCH**  
Sunday School (All Ages) 10:00 am  
Sunday Morning Worship 11:00am  
116 N. Kallcock, Richmond, KS  
(785) 835-6235

**WELDA UNITED METHODIST CHURCH**  
Sunday Church School 9:45am  
Church Services & Children's Church 11am  
Nursery Available  
(785) 448-2358  
Welda, KS  
Pastor - Bill Nelson

**GREELEY UNITED METHODIST CHURCH**  
Morning Worship 9am  
Bible Study (Teens, Adults) 10am  
Sunday School (Children) 10am  
204 N. Main, PO Box 37, Greeley, KS 66033  
(913) 755-2225  
Pastor - Bill Driver

**MONT IDA CHURCH OF THE BROTHERS**  
Sunday School 9:30am  
Church 10:40am  
(785) 448-3947  
1300 & Broomall Rd, Welda, KS 66091  
Garnett - 7th St, W 7 miles, S 3 miles  
Pastor - Vernon Yoder

**ST. JOHNS CATHOLIC CHURCH**  
Mass Sunday 8am  
Greeley, KS  
(785) 448-3846  
Pastor Fr. Daniel Stover

**KINGDOM HALL OF JEHOVAH'S WITNESSES**  
Sunday Public Meeting 10am  
Sunday Watchtower Study 10:50am  
Tuesday Ministry School 7:30pm  
Tuesday Service Meeting 8:20pm  
Thursday Congregation Book Study 8pm  
704 Westgate - Garnett, KS  
(785) 448-6755

**HOLY ANGELS CATHOLIC CHURCH**  
Mass: Saturday 5:30pm, Sunday 10am  
(785) 448-3846  
514 E. 4th, Garnett, KS  
Pastor Fr. Daniel Stover

**ST. BONIFACE CATHOLIC CHURCH**  
Sunday Worship 9am  
(785) 835-6273  
Scipio, KS  
Fr. Gerald Williams

**ST. TERESA CATHOLIC CHURCH**  
Westphalia, KS  
Mass: Sunday 9:30am  
Fr. Quentin Schmitz  
(620) 364-2416

**NEW LIFE BAPTIST CHURCH**  
Sunday School 10am  
Sunday Worship 11am, 1:30pm  
705 S. Westgate (end of 7th St.)  
Garnett, KS  
(785) 204-1769  
Pastor - Chadd Lemaster

**ST. PATRICK'S CATHOLIC CHURCH**  
Emerald (Hwy 31 West of Harris, KS)  
Mass: Saturday 5pm  
Fr. Quentin Schmitz  
(620) 364-2416

**COLONY UNITED METHODIST CHURCH**  
Church Services 9:30am  
Colony, KS  
Parsonage (620) 852-3103  
Church Office (620) 852-3106  
Pastor - Dorothy Welch

**TRUE HOPE COMMUNITY CHURCH**  
Worship Gathering Sunday 6:30pm  
1020 S. Westgate Rd.  
Garnett, KS  
(785) 409-3595  
truehopecommunitychurch@gmail.com  
Pastor - Tony Thornton

**LIVING WATERS BIBLE TEMPLE**  
Sunday School 10am  
Sunday Service 11am  
305 E. 2nd  
Garnett, KS  
(785) 304-9032  
Pastor - Michael Lobdell

If you would like to advertise your business in this directory, call Stacey at 785-448-3121 or email review@garnett-ks.com

**THE TRADING POST**  
25,000 customers read us EVERY WEEK just for your ads!  
(785) 842-6440 • (800) 683-4505  
ads@tradingpostdeals.com

**KOFO 1220AM**  
Anderson County News  
Mon - Fri 8:00am  
Country Favorites

**Wilson Chiropractic Clinic**  
Lynn A. Wilson D.C., P.A.

Treatment For Your Back & Joint Pain  
Sports, Auto and Work Injury Care  
414 W. First • Garnett  
(785) 448-6151

If you would like to advertise your business in this directory, call Stacey at 785-448-3121 or email review@garnett-ks.com

**SONIC**

Hwy 59 in Garnett, KS  
(785) 448-6393 or (785) 448-6494  
Call-ins Welcome!

Serving The Area Since 1899

**GSSB** FDIC  
GARNETT STATE SERVICE BANK  
Garnett • Colony • Hepler • Ottawa • Pomona • St. Paul • Walnut

**The Anderson County Review**

**GARNETT PUBLISHING, INC**  
112 W. SIXTH AVE., GARNETT  
(785) 448-3121

For additions, subtractions or changes to your church information, a church official may contact the Review at (785) 448-3121.

# Wanted: Elitists for city steering committee

The more “inclusive” Garnett’s yet-to-be fashioned steering committee seeks to be, the less chance it will have of success.

That sounds elitist, and maybe it is, but it’s also true.

Because it’s those elitists in communities large and small who actually do the “steering,” after all. From the tiniest burghs to the biggest metro areas, it really doesn’t matter. If you have a history of getting things done and being effective in your goals, most people will accuse you of being elitist.

You know the elitists – the local heavy hitters; the movers and shakers and “rich” (at least comparatively) folks who’ve been successful in their own endeavors but who we love to criticize. People think they’re greedy, power hungry, that they have to show off by driving a new car or owning a nice home, that their kids are spoiled, etc. We love having elitists in our towns, because they provide jobs, they’re educated, they donate money and sponsor ball teams and band trips, etc.; they provide leadership for clubs and churches and 4-H groups and various organizations. We love having them around and we’re willing to accept – if not demand – all the value they bring to the table. We just don’t like them because they’re often smarter, better educated more successful and have more money than we do.

But the greatest thing about elitists is that not only do they seem to have a lot – they typically have the most to lose, too. That’s an important aspect of “steering,” – that idea of avoiding loss and failure – because it makes success not just something to seek out but something that’s important to one’s survival.

So if you’re going to have someone steer the planning for a town or a community, it makes more sense to have those elitists involved; stakeholders who have skin in the game.

After all, what Garnett should be steering toward is the path to expand the tax base of our community. Instead of spending so much energy on an argument over adding two commissioners to our city commission, Garnett should be applying its efforts toward real initiatives to develop and attract industry to build plants and provide local jobs and to bolster our sagging inventory of housing.

Hardly anybody builds a house in Garnett anymore. Why is that? One reason is because the taxes are way higher than building on a few acres outside the city limits. Why are the taxes

## REVIEW COMMENTARY



DANE HICKS, Publisher

higher? Because homeowners – and to a lesser degree small businesses and a handful of small industries – bear the brunt of property taxes and utility costs required to fund the city’s operation. With fewer shoulders to bear the load, it’s heavier on everyone.

Homes built 20-30 years ago become the medium-priced housing available today. If those homes never get built new, that medium-priced segment of the market gets reduced and working families get incentivized not to live here.

These are not new problems – our communities and virtually all others across the small town landscape of the country have been fighting them for decades. And mostly, we’ve been losing.

So it makes sense to have the most successful people – those suited to business and development and leadership – involved in a “steering committee.” We want people who recognize the underlying problem in the town and can form a plan and then execute that plan to fix it. It’s great to like cats or be a fine artist or a master of baseball trivia or to have a house painted in polka dots, but it doesn’t qualify you to be on a city steering committee.

That’s what’s wrong with this modern obsession with “inclusivity.” Social strategists and political liberals have ingrained in us the idea that there’s more value in representing diversity from our communities than there is in getting the actual job done. That’s why so many committees fail at their jobs.

Hopefully, city commissioners deciding membership on that local committee will have the vision to understand that elitists will have a better chance of success.



THE ANDERSON COUNTY REVIEW'S

## PHONE FORUM

Record your comments on the topic of your choice at (785) 448-2500. You do not need to leave your name. Comments may be published anonymously. Calls may be edited for publication or omitted.

I think it was a big mistake mailing out all these things so people can vote again. They voted, it was what it was and we have to accept that. Now every time we don’t like something we’re going to want to do this. It doesn’t make sense. It’s a lot of taxpayers’ money.

With the new school year starting I believe every child should have a fair shake. I believe

that whatever teacher had them the year before and maybe they didn’t get along with the child, that should not be transferred to the next year. So that kind of talking about your students and who should get who and who’s going to be the difficult ones should be left out of the conversation and people should learn to just give a child a new start. Thank you.

## Rep. Watkins needs training on USDOE

Dear Editor,

Local control of education is supposedly the ideal, but few politicians would advocate the abolition of the U.S. Department of Education (USDOE). In the past such men as Jim Ryun and Ronald Regan tried, but failed. Mark Twain said, “In the beginning of a change the patriot is a scarce man, and brave, and hated and scorned.

When his cause succeeds, the timid join him, for then it costs nothing to be a patriot.” Voters should be patriots in the beginning.

At a recent meeting in Burlington, Rep. Steve Watkins was timid about abolishing the USDOE, even after he strongly advocated local control. Why is he so hesitant? He fears the ed lobby more

than he fears those of you who see the problem in public education. Would

such a move take power away from parents and teachers? Would it take power away from local boards? The answer is, of course, no it would enhance their power and get the monkey off their backs. The problem is the feds are a nice whipping boy for the systems failures. It would no longer be able to say, “Our problems are due to Federal demands like Goals 2000 or No Child Left Behind.

HB 899 has been introduced into the US House. It is one sentence, “SECTION 1. Termination of the Department of Education. The Department of Education shall terminate on December 31, 2020.” It is doubtful that this bill will pass in a Democrat House, but now is the time to let Rep. Watkins know your view on federal control of education, so, after the R’s take control, he will have no excuse. Training a politician is like training a puppy, i.e., takes a long time and is very messy, so lets start training our new Congressman. If you don’t let him know how you feel, he will probably do what the lobbyists say. Politicians are not like dogs, or as Will Rogers said, “I love a dog. He does nothing for political reasons.”

Rep. Watkins was a soldier and fought the enemy with a gun, ran the Iditarod, and climbed mountains, but he needs your help to fight today’s enemy, the lobbyists who make money trying to solve the problems they created in the first place.

Respectfully,  
Don Small  
Burlington

“A lady loves an outlaw like a little boy loves a stray dog.”

– Jesse James

## Contact your elected officials:

**2nd Dist. Congressman Steve Watkins**

1205 Longworth House Office Bldg.  
Washington, D.C., 20515  
(202) 225-6601



**12 Dist. Sen. Caryn Tyson**

300 SW 10th St. Rm 236-E  
Topeka, Ks. 66612 (785) 296-6838  
P.O. Box 191 Parker, Ks. 66072  
(913) 898-2366  
caryn.tyson@senate.ks.gov



**5th Dist. Rep. Mark Samsel**

300 SW 10th St. Rm 168-W  
Topeka, Ks. 66612  
(785) 296-6287  
Mark.Samsel@house.ks.gov



FORMERLY THE GARNETT PLAINDEALER, THE ANDERSON COUNTY REPUBLICAN, THE REPUBLICAN-PLAINDEALER, THE GARNETT JOURNAL PLAINDEALER, THE GARNETT REVIEW, THE GREELEY GRAPHIC, THE ANDERSON COUNTEAN.

Published each Tuesday by Garnett Publishing, Inc., and entered as Periodicals Class mail at Garnett, Ks., 66032, permit number 214-200. Copyright Garnett Publishing, Inc., 2018.

Postmaster: Send address corrections to:  
The Anderson County Review  
112 W. 6th Ave. • P.O. Box 409 • Garnett, KS 66032  
(785) 448-3121-review@garnett-ks.com

# What is the future of wheat in Kansas?

A few months ago I wrote an article pointing out the fact that Hard Red Winter wheat production in the United States is at a crossroads. I meant that planted acres in the U.S. are down, primarily because of economics.

It simply doesn’t make sense for a farmer to grow wheat if there is no profit in growing it, especially if there are other crops that can take wheat’s place in a farmer’s crop rotation. According to the National Agricultural Statistics Service, Kansas had seven million planted acres of wheat this year, perhaps the lowest number of planted acres in the last one hundred years. True, there will always be some wheat in Kansas. However, in the future, Kansas may have to give up the title of being known as “The Wheat State.”

The question now is, “If we are currently at a crossroads, which way do we go?”

Only you, as individual farmers, can answer that as it pertains to your farm, but as wheat farmers, we need to address the question as a group.

We, as Kansas wheat farmers, are more fortunate than we know. Kansas farmers have opportunities staring us right in the face that farmers in other states can only dream about. The opportunities are afforded to you as Kansas wheat growers through something you already own. It is something you have built and paid for. The potential for success is available to you; the outcome is up to you. Your Kansas Wheat Innovation Center in Manhattan, Kan., is there to help facilitate the process to improve wheat yield, along with wheat quality.

If you have not been to your Innovation

## GUEST COMMENTARY



RON SUPPES, Kansas Wheat Commission

Center, you need to go there. You need to go there to see what you have done, to see what research you are currently funding through your check-off and royalty payments and to evaluate the potential for the future. You will find the potential to make a profit is within reach. You will see that in the near future, wheat will once again compete economically with other crops.

Wheat has been at a disadvantage to other crops because certain countries will not accept genetically-modified (GM) wheat. We are very fortunate to be able to forge ahead through the use of the CRISPR/Cas9 process, gene markers and other scientific processes that are not classified as GM technology. The processes are just as fast and the results look very promising. As usual, the big hurdle is funding.

Each time a Kansas farmer decides to grow some crop other than wheat, the wheat check-off is gone, as well as the royalty on purchas-

ing your Kansas varieties of wheat, therefore wheat research suffers. In Kansas only about 25 percent of our acres are planted in Certified Kansas State University varieties. That means that far too many farmers are choosing not to plant certified seed, and they are hurting the seed production engine that they actually own a big share in.

If farmers want to be able to have a choice of public or private varieties, they need to support basic wheat research. If individual farmers or groups of farmers see a need to invest in research projects that they deem important, that avenue is also available to them through the Kansas Wheat Commission Research Foundation. The Foundation is a 501(c)(3) and is also owned by the wheat growers of Kansas. Funds paid to the Foundation are aimed specifically at wheat research.

Most farmers in Kansas wish to grow wheat. In many cases we actually need it in our rotations. We all know that the best way to get something done is to do it ourselves, so wheat farmers need to do continue our investments in wheat research. We have already built the infrastructure. We simply need to get more involved, plant certified seed every year and stop saving seed. All of these steps together would greatly enhance farmer-owned research and help keep wheat as a profitable crop.

– Ron Suppes is a member of the Kansas Wheat Commission, and farms about 11,000 acres in West Central Kansas.

# Feds should target websites hosting the hateful

At some point in the late 1960s, you could be forgiven for thinking that the FBI was in charge of the KKK.

It conducted an operation that infiltrated, manipulated and ran the group into the ground. With violent white hate again on the rise, we should take some inspiration – even if the methods can’t be replicated – from the FBI’s past grappling with racist extremists.

If there were any doubt that the country has a white nationalist problem, the shocking attack on an El Paso, Texas, Walmart should remove it. These self-radicalizing freaks, a subset of the broader mass-shooting phenomenon, take inspiration from prior acts of vicious mayhem and cheer high body counts on internet message boards. They are domestic subversives and terrorists, and deserve to be treated as such.

There is no doubt that if we had suffered a string of massacres on our soil carried out by Islamic radicals, we’d do everything in our power to diminish and hopefully eradicate the danger – indeed, we have. The national response to racist extremists should show the same alacrity and resolve, while acknowledging that they represent a different, more-difficult-to-counter threat than the old Klan.

In 1964, President Lyndon Johnson told FBI Director J. Edgar Hoover to go after the Klan as he had the Communists. Running until 1971 and involving 26 field offices, COINTELPRO-White Hate targeted groups and people deemed violent threats, not their ideology per se.

## NATIONAL COMMENTARY



RICH LOWRY, King Features Syndicate

The effort was comprehensive and no-holds-barred. In his history of the FBI, Tim Weiner writes, “The FBI dangled small fortunes before potential KKK informers, offered outright bribes to Klansmen who could serve as double agents inside state and local police forces, planted bugs and wiretaps in Klaverns, carried out black-bag jobs to steal membership lists and (on at least one occasion) dynamite caches.”

The FBI worked to preempt violent acts, and gained an enormous influence over Klan groups. The New Orleans office was so successful at degrading the Louisiana chapter of the UKA that the office’s concern became propping the group up, lest its disintegration

loosen the FBI’s control.

Overall, Klan membership shrank from an estimated 14,000 members in 1964 to 4,300 in 1971. Per Shelton himself, “the FBI’s counter-intelligence program hit us in membership and weakened us for about 10 years.”

Of course, the contemporary FBI obviously isn’t going to take over the “alt-right,” nor should we want it to. The abuses of the COINTELPRO programs – the FBI also targeted civil-rights groups and the New Left, among others – became notorious when they were exposed in the 1970s.

There are also practical obstacles to the FBI duplicating its anti-Klan work. The Klan was an organization, whereas today’s white supremacists are free-floating haters posting anonymously on the internet.

Yet the FBI needs to be intensely focused on this threat. The bureau should take an intelligence-based approach. It should monitor sewer message boards like 8chan, the forum for white-supremacist propaganda. Posters who cross from First Amendment-protected speech to incitement should be prosecuted. The FBI should interview anyone expressing sympathy with terrorism – just as it does with suspected Islamic extremists – and surveil such persons as appropriate and permitted under the law.

El Paso was an outrage, and surely not the last. We need to react accordingly.

Rich Lowry is editor of the National Review.

# 2009: Garnett mayor faces judge regarding prior DUI arrest

August 2009

Garnett Mayor Chris Maynard will face a Franklin County judge next week in connection with a May DUI arrest. Records show Maynard was pulled over for speeding on Highway 59 on May 5 by a Kansas State Highway Patrol Trooper when he was subsequently arrested on suspicion of driving under the influence. Maynard's only comment was how the incident might reflect on the city. "I am sorry if this incident has cast a negative light on the City of Garnett, but I am innocent until proven guilty."



**Melissa Hobbs**  
SEND LOCAL HISTORY PHOTOS, INFORMATION TO  
REVIEW@GARNETT-KS.COM

## THAT WAS THEN

Tom Hermreck reported that two burglaries in the southern part of the county with a total lost property value of \$13,000 took place. One of the items stolen was a 1988 Chevy pickup owned by Gerald Welsh of Kincaid. The Halfway House Saloon in Colony was also broken into and the perpetrators made off with an empty beer keg, a keg tap, 25 cases of beer, a roll of chewing tobacco, several bar lamps and globes, food items, and a box of Bic lighters.

August 1979

In 1980, Westphalia will be 100 years old and a group

of interested citizens have formed a Centennial committee to organize activities to recognize and celebrate that anniversary. The 100 year celebration will take place on July 4, 5, and 6th of next summer and anyone interested in helping is advised to contact a committee member. Several projects are already under way including centennial plates and a book that covers the 100 years of history of Westphalia.

August 1919

The return of the Jews to Palestine is a big element in the next world crisis. There is no other construction to be placed on the prophecy made by Jesus from the Mount of Olives that Jerusalem would be destroyed and its people scattered and that they would later come back and rebuild their kingdom when Christ would return to the world and re-establish his Kingdom. The movement of the Jews to re-establish themselves in Palestine means that the second coming of Christ is near at hand.

# Anderson County Fair history presented at Historical Society meeting

Richard Miller presented Anderson County Fair History to members and guests of the Historical Society on August 8 following the dinner meeting at the museum.

The first record of a fair was in 1863. Later the first annual Anderson County Agricultural Fair Exhibition was held at the Moler school house in Reeder Township on September 7th and 8th, 1870.

Harry Johnson's 1936 Anderson County History notes that the Anderson County Fair was held on the McAfee farm, a half mile west of Garnett on October 3, 1872, and Valentine Gerth entered some fine horses.

Through the 1890's, fair posters are numbered as annual fairs dating from 1872. Then Harry Johnson's county history notes that on May 15, 1896, the fair grounds were sold at a sheriff's sale and brought \$990. Newspapers reported numerous other fairs held around the county in Westphalia, Colony, and Kincaid.

With the assistance of J. A. Hendricks, the County Agricultural Agent; Vernon Velthoen, Guy Rogers, and others throughout the county helped organize the first 4-H clubs. In 1931, Guy Rogers, Fred Staadt, and Frank Crawley explored organizing a 4-H fair in Anderson County. In August 1931, the first 4-H fair was held in conjunction with the third annual Garnett Homecoming festival.

Newspapers reported in 1975 that 110 girls took part in the 4-H Clothing Revue, and

that Kitty Wells entertained a large crowd in the stadium. In 1976 it was estimated that 2,000 to 2,500 watched the fair parade.

Although there are many gaps in the recorded history of the Anderson County Fair, it continues as a popular event for 4-H and community members today. During the business meeting, President Kenny Kellstadt reported on construction of new stairs to the museum meeting room, updating the ACHS website, and board approval for construction of new shelving and displays for the medical room grant project. Renee Pagenkoph encouraged everyone to check out the website at historyandersoncoks.org.

Kenny reported an extension of the museum hours, for the 2nd and 4th Saturday's of each month, from 10:00 to 4:00, and asked for volunteers to assist with those hours.

The next meeting will be September 5th, 6:30 p.m. at the museum.

# Colony Christian Church News - "Come as you are."

Darren McGhee gave the Communion Meditation titled "Come as you are". Luke 22:7-22 tells how Jesus begins to prepare the disciples for the Last Supper and the New Covenant. We are to come to Jesus just as we are... broken, sinful, hungry. When we confess our sins to Jesus, he is merciful and just to forgive us. Sidewalk Prophets song, "Come as you are", explains exactly how we are to come to Him. Pastor Chase Riebel gave the sermon on "Let God's Light In". 1 John 1:5-10 tells us that God is light, and that there is no darkness in Him. If we claim to have no sin, then we are not living in the light, in God's truth. If we confess, He will forgive

us. Satan, the receiver, will do whatever it takes to tempt us to sin and not live in the truth. We can't ignore our sins, and we can't blame Satan for them. We must remember that the Spirit that lives within us is greater than the spirit that lives in the world. (Ref: 1 John 1:5-10, Genesis 3:13, Revelation 20:8 & 10, 1 John 4:4, John 1:5). You can listen to this sermon in its entirety using our website at <http://www.colonychristianchurch.org>, or by using your favorite podcast.

Men's Bible study Tuesday morning at 7:00 am. Adult Bible study Tuesday at 6:30 pm. Youth group Wednesday at 5:30.

# MCSWANE...

FROM PAGE 1

another for \$5,000 on Feb. 21, in exchange for property which was not disclosed in the court filing. The court complaint alleges McSwane knew in advance the checking account at Goppert State Service Bank in Garnett contained insufficient funds before writing the checks to Macklin. Macklin's

Facebook account shows the two were friends dating back to at least 2017.

McSwane pled guilty to two counts of forgery and a count of felony theft in the Garnett case, and in June was sentenced to 18 months probation and payment of some \$23,000 in fines and restitution.

Court records showed McSwane stole some \$16,000 from the Life Assembly of God Church in Garnett over a period of weeks beginning in December 2018 through late February 2019, and some \$6,000 from her grandmother, Pamela McSwane, while the younger woman lived with her during

that same time period.

Jennifer McSwane's probation was granted by the court in lieu of jail time on the charges, with the intent of providing opportunity for her to pay the assigned restitution. She is due in Allen County District Court on the additional charges September 4.

# Save our alleyways for safety's sake

GARNETT, KS: The City of Garnett is announcing safety inspections are underway in city right-of-ways, including alleyways, easements and streets. The goal is to keep these accesses free of brush, trees, vines and debris that make it unsafe for the public and utility vehicles to pass through. The code enforcement officer and zoning administrator are currently canvassing the community making these inspections and will be visiting with residents and property owners, encouraging cooperation. If no one is available to visit with, a letter will be sent.

City alleys are 14 feet to 16 feet wide. In some areas the overgrowth of vegetation has narrowed the alley making it difficult for trash trucks and electric trucks to get through. Sometimes the vegetation attaches itself to utility poles or obstructs utility lines, causing problems to homes and businesses. When vegetation grows up onto or into a building, it can cause structural damage and foundation issues and encroach on neighboring structures. In some instances, it may prohibit a fire truck or ambulance from getting to an emergency and hinder valuable response time. The City of Garnett asks that neighbors help their neighbors by assisting in this clean-up effort. The City realizes that not only city vehicles are impacted by trees or bushes rubbing against them, but personal vehicles passing through can sustain damage, leaving the liability of damages to property owners. Also noted during inspection

will be site obstructions on roadways, such as bushes or trees that make it difficult to know when to enter onto a road.

While inspecting the right-of-ways, city staff will also be noting work that needs to be done by the City, such as alleys that need surface grading and repairs, and utility poles that need replaced. This effort is not meant to single any property out, as the City of Garnett is taking action to address its responsibilities also. Now is the time to address these issues before winter weather is upon us. If church groups and volunteer organizations are interested in stepping up to help people in the community with this effort, please contact Pat Tate, Code Enforcement Officer/Fire Chief at 785-448-3042. There are times when people, such as the elderly or disabled, have challenges getting the necessary yardwork taken care of. Perhaps there are people in the community who will lend a helping hand.

For more information about city ordinances and codes relating to weeds and nuisances and how they impact your property, please contact Pat Tate, Code Enforcement Officer/Fire Chief at 785-448-3042.

**Ever thought about selling your wheels?**  
Sell them the whole car and offer a discount! Run your ad here 3 times and get the 4th FREE!! Call to place your ad ... (785) 448-3121

## ANDERSON COUNTY BUSINESS DIRECTORY

Check your local area businesses first - keep your local dollars at home!

### JEFF'S TOWING & RECOVERY

We Can Hook You Up!  
Flatbed Services, Winch Outs, Lock Outs & Jump Starts  
Tire Changes  
**Jeff Chandler - Owner**  
1110 E. 4th Terr. Garnett, KS 66032  
Office & Impound Lot  
785-433-5470  
jeffstowing1669@yahoo.com  
24/7 Service

### TRADE WINDS

BAF & GRILL  
(785) 448-5856  
110 W. 5th Ave. • Garnett  
Tues. - Thur. • 11 a.m. - 11 p.m.  
Fri. & Sat. • 11 a.m. - 2 a.m.  
Daily Specials  
Lunch Delivery M-F

### MONT IDA MEATS

Howard Yoder  
Owner - Operator  
22468 NW Indiana Rd  
Welda, KS 66091  
(785) 489-2212

### WOLKEN TIRE

GARNETT, KS  
601 South Oak  
Garnett, Kansas  
(785) 448-3212  
Cooper • Jetzon • Kumho

### AUBURN PHARMACY

429 N. Maple • Next to Country Mart  
(785) 448-6122  
Reliable, Dependable, Consistent  
Always There - Always Caring

### BECKMAN MOTORS

GARNETT, KS  
N. Hwy. 59 • Garnett  
(785) 448-5441  
www.beckmanmotorsinc.com

### YUTZY BUILDINGS

1-800-823-8609  
www.yutzycorrection.com

### Jo Wolken E.A., A.T.A.

IRA's Mutual Funds Investments  
785-448-3056  
www.taximetaxserviceinc.com  
HELPING YOU PLAN TODAY FOR TOMORROW

### KOFO 1220AM

Country Favorites  
Anderson County News  
Mon-Fri • 8:00am.

### E-Statements & Online Banking

GSSB  
Garnett • Colony • Hepler  
Ottawa • Pomona •  
St. Paul • Walnut

### The TV Shoppe

Continuing to serve you after 31 years.  
Hours:  
Mon. - Fri. 8:30 a.m. - 10 a.m.  
Please call 785-448-5931 after 10 a.m. and leave Tony a message.

### fotodrone mapping

aerial video & still photography  
(785) 304-3870 • flyfotodrone@gmail.com

### WISE AUTO

THE SMART CHOICE  
120 S. Maple  
Garnett, KS  
wiseautoks.com  
785-448-2171

### Dirty Deeds

Done dirt cheap.  
(785) 448-3121

### PERFORMANCE ELECTRIC SOLUTIONS

206 North Oak • Ottawa, KS • (785) 242-5748  
www.performance-electric.com  
A complete residential electrical service company  
• Rural Electrical Service  
• Transfer Switch & Generator Connection  
• Bucket Truck  
7-Block Certified Licensed Electricians  
Bonded • Insured  
Free Estimates  
Quality Service For Over 20 Years.  
Serving Anderson & Franklin Counties.

### Millers Construction, Inc.

Since 1980  
Delden Doors & Openers  
• We sell & service these brands & more.  
Call for quotes & details.  
Everett Miller • (785) 448-6788  
Rodney Miller • (785) 448-3085

### Daily Specials

**Monday:** \$1 tacos  
**Tuesday:** bbq & burgers, house-smoked meat sandwiches or 1/2 lb. cheeseburger  
**Wednesday:** Fried chicken  
**Thursday:** Meatloaf  
**Friday:** Chicken fried steak or chicken fried chicken  
**Saturday:** Different special every week  
**Sunday:** Homemade pan-fried chicken w/sides  
**Every Sunday 11 a.m. - 2 p.m. Homemade PAN-FRIED CHICKEN**  
We have pizza!  
Where customers are treated like family!  
Gas ♦ Store ♦ Café ♦ Bar  
423 E. Woodward St. • Parker, Kansas

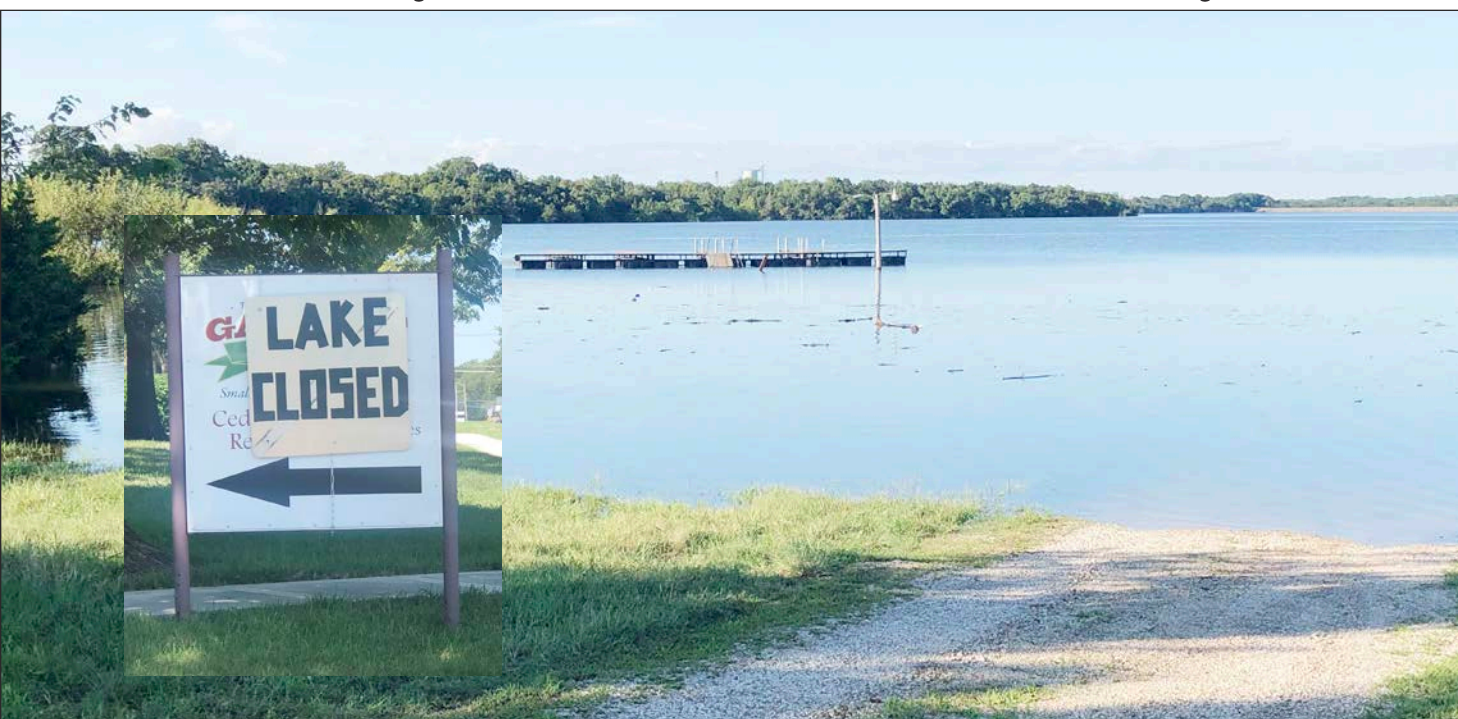
### Ask how to advertise in this space for only \$16 per week!

Contact Stacey at 785-448-3121.

### Quality Matters

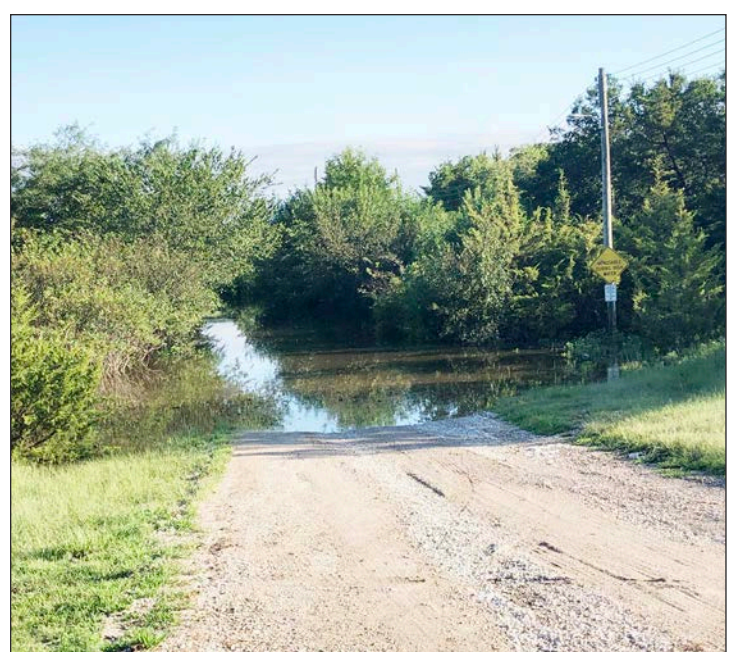
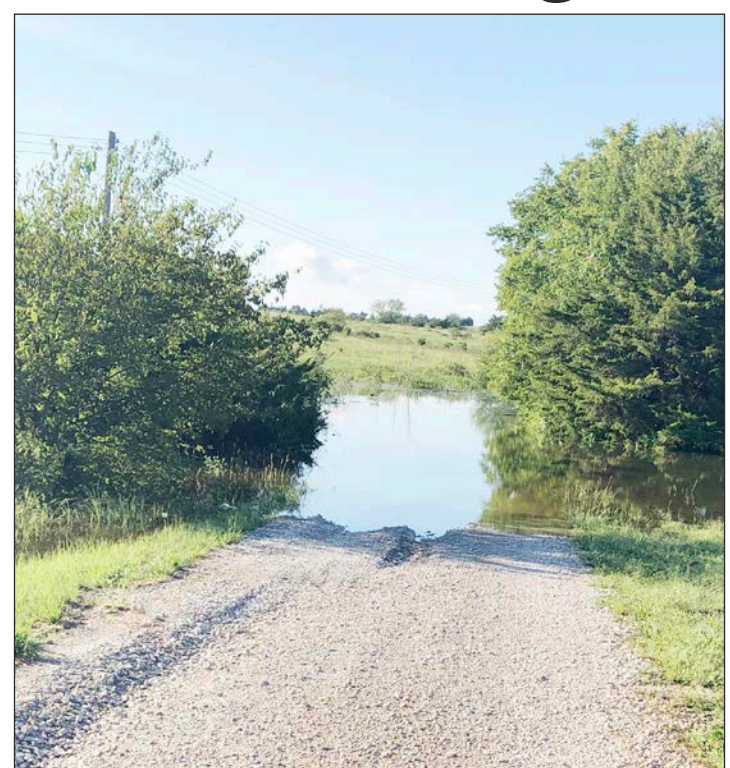
ADAMSON BROS Heating & Cooling  
www.adamsonbros.com  
785-242-9273  
102 S. Walnut  
Ottawa, KS 66067

# Cedar Valley Reservoir is currently closed due to flooding



THE ANDERSON COUNTY REVIEW 8-13-2019 / STACEY DENNISON

Cedar Valley Reservoir was closed late last week due to flooding. The above picture shows the north boat dock. The top right picture shows the road going to the north campgrounds and the bottom right picture shows the road that leads to the south campgrounds.



## Pieces and Patches Quilt Guild searching for information about WWI Memorial quilt

The Pieces and Patches Quilt Guild was called to order by President Mary Parrott on July 25, 2019 at 9:30 a.m. at the Anderson County Historical Museum. Roll call was answered by 21 members. The June 2019 minutes were approved as published in the newsletter. Lynda Feuerborn gave the Treasurer's report.

Mary announced that the Old 75 Gallery in Burlington has vintage quilts on display through the end of July. Some of them are owned by members Shirley Allen, Carolyn Crupper and Connie Hatch. The Gallery hours are Wednesday-Saturday 3-6 PM.

It was reported that the Coffey County Fair had 50 entries in the Quilt Category.

Our meeting being at the Anderson County Historical Museum had an ulterior motive. Terrie Gifford, Jackie Gardner and Irene Eilenshtein have been assisting the museum volunteers by reviewing the quilts that are stored at the museum and identifying them by acquisition numbers that Renee Pagenkopf was able to provide. With the help of attending quilt guild members, cotton numbered tags were sewn on to all of the quilts during the rest of the meeting.

### Committee Reports Program

Jeanette Gadelman reported that our August meeting will be at the Baptist Church in Garnett. It is our annual luncheon and installation of officers. Our September and October meetings will be at the Archer Room of the Garnett Library.

### Charity Quilts

Sandra received five baby

quilts. Connie Hatch donated two quilts. Kay Roeckers donated a quilt top and asked if anyone would quilt it for a charity quilt. Claudia Matthes donated four baby quilts. Donna Sutton donated a charity quilt.

### County Fair

Terrie Gifford passed around the sign-up sheet for sitting with the quilts. She relayed that Extension Office personnel and 4H members will be setting up for the fair on Saturday at 1PM. This year they have agreed to try a new arrangement of the wire racks that would accommodate more of our quilt entries.

### August Luncheon

Carolyn Crupper reminded us that the committee would like to decorate the tables again this year with school supplies donated by members. For a menu this year those whose last name begins with A-G are to bring entrees, H-M salad and N-Z dessert. We will be meeting at the Baptist Church in the basement. There is an elevator to the basement accessible from the back door.

### Auditing Committee

Claudia Matthis agreed to help Joleata Kent audit the treasurers' books.

### Nominating Committee

Judy Stuke made a motion to accept the Slate of Officers as presented at the June meeting. Bonnie seconded. All approved. Officers voted in are President, Mary Parrott, Vice President Jackie Gardner, Treasurer Lynda Feuerborn, Secretary Terrie Gifford, Newsletter Editor Connie Hatch and Historian Jeanette Gadelman.

### Old Business

Bonnie reported that another

of the "Agnes Alexander" signature blocks had found a home. The block made by Nellie Garrett went to her daughter Judy Garrett Greeman.

### New Business

An inquiry about a WWI Memorial quilt that was created in Anderson County in 1918 was discussed. There are newspaper articles in 1918 that indicate the Red Cross organizations in the county were creating a quilt that had names of "boys who have been called to the military service." Mrs. Ferdinand Meyer was named as "Chairman" of the Earnest Red Cross auxiliary that was leading the Memorial Quilt project. There were approximately 100 names listed in the papers to be placed on the quilt for a \$1 donation by the family. The quilt was to be auctioned after completion. The proceeds were to go with the Red Cross treasury for expenses of war work. It would be nice to see the quilt or a picture of the quilt and know who has cared for the quilt for the past 100 years. No one in the meeting had any information or knowledge about this quilt but members would be interested in hearing of any information. This was just a beginning of the discussion and we will seek more answers. Joleata Kent and Kay Roeckers would like more information if anyone finds out more about the 100 year old quilt. We hope someone in our reading audience has information.

### Secret Sister Gifts

Shirley Allen, Jeanette Gadelman and Donna Sutton received secret sister gifts.

### Show and Tell

Eight members showed 13 quilts. When she showed her quilt Sandra Moffatt told us all an interesting story that went with the quilt. It all began with a book written by Marie Bostwick (writer of the Cobbled Court Quilt Series) called "Hope on the Inside". It seems that the Author had partici-

pated in a Deb Tucker retreat under an assumed name. As the retreat proceeded another member of the retreat figured out who she was. That led to a collaboration between Deb Tucker and Marie Bostwick to produce a pattern called "Doves of Hope", the pattern of the quilt that Sandra made.

The meeting was adjourned by President Mary.

Minutes recorded by  
Terrie Gifford

## BBB offers tips to avoid possible fallout after Capital One's data breach

In the wake of the recently announced Capital One data breach, Better Business Bureau (BBB) has some suggestions for consumers concerned that their credit or debit cards may have been compromised.

- Stay calm. Consumers are not liable for fraudulent charges on stolen account numbers.

- Check with the website of the company that was breached for the latest information. Type the company name directly into your browser. Do NOT click on a link from an email or social media message.

- If a credit card has been compromised, you will likely hear from the bank or card-issuer first. If you have questions, call the customer service number on your card.

- Consider putting a credit freeze or fraud alert on your credit reports with the three major credit reporting agencies (bbb.org/creditfreeze). A credit freeze will prevent anyone from accessing your credit report or scores. This means you cannot apply for new credit without lifting the freeze. A fraud alert flags your account but does not automatically halt new credit being opened in your name.

- AnnualCreditReport.com is the only website authorized by the Federal Trade Commission to provide you with a free annual credit report. Be wary of ads, emails, and social media messages for other services. Everyone should check their credit reports annually, whether or not they have been the victim of a data breach.

- If your credit card(s) has been breached

- Monitor your credit card statements carefully (go online; don't wait for the paper statement).

- If you see a fraudulent charge, report it to your bank or credit card issuer immediately so the charge can be reversed and a new card issued.
- Keep receipts in case you need to prove which charges you authorized and which ones you did not.

- If your debit card has been breached

- Do all of the above as for credit cards, but pay very careful attention to your account. Debit cards do not have the same protections as credit cards and debit transactions withdraw funds directly from your bank account.

- Contact your bank for more information, or if you want to

pre-emptively request a new debit card or put a security block on your account.

Beware of scammers who may purport to be from the retailer, your bank or your credit card issuer, telling you that your card was compromised and suggesting actions to "fix" the problem. Phishing emails may attempt to fool you into providing your credit card information, or ask you to click on a link or open an attachment, which can download malware onto your computer.

Find us on  
Facebook

Stay in the loop with daily news updates and breaking news from the Anderson County area.

You like this.

The Anderson County  
Review

PLEASE JOIN US AT THE  
**CREST COMMUNITY OPEN HOUSE**

Wednesday, August 21, 2019

5:00 PM - 7:00 PM

Crest School

MEET: The Teachers

GREET: School Administration

EAT: Hotdogs, Chips, Cookies & Ice Cream

DAILY LUNCH SPECIALS  
11:00 AM - 2:30 PM

Monday: Taco Salad

Tuesday: Philly Cheese Steak

Wednesday: Hot Beef Sandwich

Thursday: Fried Chicken

Friday: Deluxe Fish Sandwich

Saturday: Chicken Fried Steak

Traditional PA Dutch Cooking • Bakery • 100% Organic Coffee



309 N. Maple • Garnett  
(785) 448-5711

www.dutchcountrycafe.com

**FedEx**

The most reliable overnight shipping service, available 24-hours-a-day!

Saturday delivery available too!

Federal Express - Overnight Delivery  
The World On Time®

Located at

Garnett Publishing, Inc.

112 W. Sixth Street, Garnett, Kansas

Visit Iola & Allen County!

These Iola and Allen County businesses appreciate your patronage and encourage you to visit your local merchants in Allen County!

**Flynn Appliance & Hi-Def Center**

11 N. Jefferson • IOLA • (620) 365-5940  
M-F 8-6 / Sat 8-1

Best selection of Home Appliances. Flat Panel Televisions Plasma & LCD

**IOLA PHARMACY**

109 E. Madison • IOLA  
(620) 365-3176 or (800) 505-6055

Your hometown full line full service pharmacy.

Free delivery in Iola.

24-hour Prescription Services

VoiceTech Automated Prescription Refill Service

**DTI**

Diesel & Turbo of Iola

(620) 365-5232  
dlayman@dieselandturbos.com

1 S. Walnut • IOLA  
David Layman, Mgr.

**Harmony Health Herbs**

309 W. Lincoln • IOLA

(620) 365-0051

M-W-F Noon-5:30 / SAT Noon-2

NATURE'S Independent Senior & Member  
SUNSHINE Distributor Discounts  
www.mynsp.com/harmonyhealth  
Gluten Free Foods

You just proved advertising works! Call (785) 448-3121 to advertise your business today!

**PSI, Inc.**

See us for all your insurance needs.

Iola  
(620) 365-6908



To advertise your business here, call Stacey at (785) 448-3121.

## CALENDAR

## Demolition Derby brings 2019 Anderson County Fair to a close

**Tuesday, August 13**  
 Recycle Trailer  
 5:30 a.m. - Spin Class  
 10 a.m. - Storytime for Preschoolers  
 @ Garnett Public Library  
 Noon - Rotary International Club,  
 at Garnett Inn and Suites  
 1 p.m. - 3 p.m. - Garnett Senior Center  
 - Dominoes, cards and pool table  
 5 p.m. - Spin Class  
 5:30 p.m. - Yoga  
 6 p.m. - City Commission Meeting  
 6 p.m. - Alzheimer's Support Group  
 6:30 p.m. - Golden Prairie Beekeepers  
 7 p.m. - Alcoholics Anonymous

**Wednesday, August 14**  
 First Day of School - USD 365  
 & St. Rose  
 8:45 a.m. - Yoga  
 10 a.m. - Remember When Wednesdays  
 10:30 a.m. - Kincaid Community  
 Library Family Story Time  
 1 p.m. - Garnett Duplicate Bridge at  
 the Garnett Inn  
 5:30 p.m. - Parks & Rec. Advisory Board  
 5:30 p.m. - Yoga  
 5:30 p.m. - Water Aerobics  
 7 p.m. - Garnett Optimist Club Meeting  
 7 p.m. - Friends of the PSRT Meeting

**Thursday, August 15**  
 First Day of School - USD 288  
 5:30 a.m. - Spin Class  
 8 a.m. - Morning Mingle - Business  
 Networking Opportunity. For more  
 info., Contact City Hall at 785-448-  
 5496 and ask for Julie, Kris, or Susan  
 9 a.m. - TOPS at Garnett Methodist  
 Church basement, 2nd & Oak  
 4 p.m. - Walker Art Committee Meeting  
 5 p.m. - Spin Class  
 5:30 p.m. - Yoga  
 6 p.m. - 13 point pitch @ Garnett  
 Senior Center. Bring snacks.  
 7 p.m. - Alcoholics Anonymous

**Friday, August 16**  
 8:45 a.m. - Yoga  
 5:30 p.m. - Water Aerobics

**Monday, August 19**  
 8:45 a.m. - Yoga  
 9 a.m. - Anderson County Commission  
 Meeting @ Annex  
 5:30 p.m. - Water Aerobics  
 6 p.m. - Celebrate Recovery @  
 Church of the Nazarene  
 6 p.m. - Garnett Lions Club Meeting

**Tuesday, August 20**  
 5:30 a.m. - Spin Class  
 10 a.m. - Storytime for Preschoolers  
 @ Garnett Public Library  
 Noon - Rotary International Club,  
 at Garnett Inn and Suites  
 1 p.m. - 3 p.m. - Garnett Senior Center  
 - Dominoes, cards and pool table  
 5 p.m. - Spin Class  
 5:30 p.m. - Yoga  
 5:30 p.m. - BPW Meeting  
 6 p.m. - Garnett Planning Commission  
 7 p.m. - Alcoholics Anonymous

**Wednesday, August 14**  
 8:45 a.m. - Yoga  
 1 p.m. - Caffeine and Colors & Library  
 1 p.m. - Garnett Duplicate Bridge at  
 the Garnett Inn  
 5:30 p.m. - Yoga  
 5:30 p.m. - Water Aerobics



THE ANDERSON COUNTY REVIEW 8-13-2019 / KEVIN GAINES

On Friday night, the demolition derby marked the official close of the 2019 Anderson County Fair. New this year, the kids got their chance to entertain the crowd in their power ride on toys.



## Gillispie & Owens attend FFA District Officer's Conference

MANHATTAN, Kan. - Hailey Gillispie and Alison Owens of the Anderson County FFA Chapter participated in the Kansas FFA District Officer's Conference (DOC) held at the Marriott Convention Center in Junction City, KS, August 10-11. Gillispie serves as the East Central District Reporter and Owens serves as East Central District Sentinel. The theme of "Stepping Up to the Plate" encompassed the key elements of identifying the officer's StrengthsFinder themes, having impactful conversations, the three-component model of agricultural education and creating and executing workshops. Just as each of these ideas is necessary in any business or organization, district officers are expected to serve with these key themes in mind as they use their strengths to impact the lives of FFA members.

Starting with an executive committee meeting, officers were able to discuss current issues facing Kansas FFA and Kansas agricultural education.

Students are able to bring perspectives from around the state which will be put into action by the Kansas FFA Association. Officer's participated in workshops led by the 2019-2020 Kansas FFA Officers, and Garret Craig of Clay Center who is serving as the 2019 Kansas FFA National Officer Candidate, Dr. Gaea Hock of Kansas State University Agricultural Education, Edie Doane of Kansas Farm Bureau, Dr. Emily Lehning of Kansas State University, and Kristen Schmidt of Cargill. Leaders of the Kansas State University College of Agriculture welcomed officers at a banquet and gave words of wisdom about their year of service. As the conference drew to a close, district officers reported on the ideas that they choose to pursue before heading home to implement the skills that they learned.

Both Gillispie and Owens will serve on a team of 6 FFA members from the East Central District, who have responsibilities such as serving on the state executive meeting, plan-

ning and facilitating a district Greenhand Conference for first year members, volunteering at the State Fair, and presenting a district banquet. Other members of the East Central District team include: Bryleigh Isch (Burlington), Alyssa Sheron (Spring Hill), Grayce Wilmurth (Prairie View) and Demi Hull (Tonganoxie).



Gillispie



Owens

## Reed graduates from Fort Hays State University

HAYS, Kan. - Lance Dwayne Reed, Garnett, was among the 2,273 who completed associate, bachelor's or graduate degrees at Fort Hays State University in the spring 2019 semester. Reed earned a Bachelor of Science degree in agriculture

(beef cattle management). The university conferred 456 graduate degrees (master's, Education Specialist and Doctor of Nursing Practice), 1,799 bachelor's degrees and 59 associate degrees.

## Don't Miss Out...

On this UNBELIEVABLE, UNPRECEDENTED Offer On Any Speed Queen unit purchased for residential use.

A 10 Year Parts & Labor Warranty in your home!

**10 Year**  
 \*See Dealer for details or go to speedqueen.com to see the warranty document.  
**MOST RELIABLE**  
 Major Appliance Brand according to Consumer Reports  
 Parts & In-Home Labor Warranty  
**Speed Queen**

Free Delivery within 100 miles on purchases over \$699, (Appliance delivery free to your door or garage).

Many other Specials on

**10 Year**  
 Limited Time Offer Parts & In-Home Labor Warranty  
**MOST RELIABLE**  
 Major Appliance Brand according to Consumer Reports  
**Speed Queen**

- Carpet
- Furniture
- Appliances
- Bedding
- Area rugs & more!

N. Hwy. 59  
 Garnett  
 (785) 448-3216  
 M-F 8:30-5:30  
 Sat. 9-4

**BAUMAN'S**  
**CARPET & FURNITURE**  
 805 N Maple, Garnett, Ks 66032 - 785-448-3216

## Health Services DIRECTORY

**Eye Care**

**VISION SOURCE**  
 115 N. Maple  
 Garnett, KS  
 (785) 448-6879

**Pharmacy**

Maple & Hwy. 31 MON-FRI 8:30am-7pm  
 Garnett, KS SAT 8:30am-2pm  
 Next to Country Mart

**AUBURN PHARMACY**

We accept all Medicare drug plans.  
**(785) 448-6122**

**Chiropractic**

**Chronic Back or Neck Pain?**

Ask how the Triton Decompression-Traction Therapy can help. A non-surgical approach for chronic sufferers.

**WILSON CHIROPRACTIC CLINIC**  
 Lynn A. Wilson, D.C., P.A.  
 Keeping Your Back In Action

Treatment For Your Back & Joint Pain  
 Sports, Auto, and Work Injury Care  
 414 W. First • Garnett  
 (785) 448-6151

M-T-W-F SAT 8-10  
 8-5 After Hours By Appt.

To advertise in this guide, contact Stacey at The Anderson County Review (785) 448-3121 or email review@garnett-ks.com

# County publishes notice of delinquent property taxes

(First published in The Anderson County Review, Tuesday, August 6, 2019)

\*\*\*THIS IS NOT A TAX FORECLOSURE SALE\*\*\*  
 NO PUBLIC AUCTION IS HELD\*\* Property is NOT SOLD AT PUBLIC AUCTION until three years have passed from the 1st publication of delinquent tax on a parcel. The following publication is to legally perfect a tax lien against the property for Anderson County and is required by Kansas Statute. Notice is hereby given that so much of each tract of land described in the following list located in Anderson County, Kansas, as may be necessary for the purpose, will be on the first Tuesday in September 2019, bid off by one as County Treasurer of said County, in the name of and for Anderson County, at my office in the courthouse, in Garnett, Kansas, for the taxes and charges thereon, for the tax year 2018. /s/ Dena M. McDaniel Anderson County Treasurer STATE STATUTE PROVIDES THAT ONLY THE COUNTY MAY BID; NO PRIVATE BIDS PERMITTED. EACH TRACT OR LOT IS SUBJECT TO A FEE OF \$16.00 AND 11% INTEREST PER ANNUM PRORATED. Publication indicates tax payments through July 31, 2019. Any payments made after this date are not reflected in this publication.

20  
 CURTIS D BETTINGER 1-03500760 Acres-7.70 "\$1,406.20" BEG SE COR SW4,N528',W660',S528',E TO POB" Sec-05 Twp-20 Rng-20  
 ANGELA S BETTS 1-00206520 Acres-3.90 \$541.88 N264' W2 NW4 SE4 S RR & EX RR & HWY RW Subd-BARNES ADDITION Sec-29 Twp-20 Rng-20  
 ANGELA BETTS 1-03503090 Acres-12.70 \$126.86 W2 NW4 SE4 S HWY EX HWY & RR R /W Sec-29 Twp-20 Rng-20  
 WILLIAM E BETTS 1-00215640 \$735.24 W40' L 8 & E8' VAC ALY BET LTS 8 & 9 Subd-CHAPMANS ADD TO GARNETT Blk-3 Sec-30 Twp-20 Rng-20  
 SETH ALAN & ANGELA D BLACK 1-00100260 \$802.48 "N70'LTS 6,7 & N70'W2 LT 8 Subd-COLONY Blk-17" Sec-06 Twp-23 Rng-19  
 SETH ALAN & ANGELA D BLACK 1-00102590 \$764.80 BEG 60'W OF NW COR BLK 2 S150' W100' N150' E100' TO POB Subd-COULTERS 1ST ADD TO COLON Blk- 2 Sec-07 Twp-23 Rng-19  
 GILES BOUSE 1-00701560 \$25.00 "BEG NW COR LT 4, BLK 11, E65', S50', W20', N40', W45', N10' TO POB" Subd-WESTPHALIA (corrected) Sec-36 Twp-21 Rng-17  
 F E BOYLES CONST CO INC 1-03503010 Acres-9.10 "\$1,034.30" BEG 190' W SE COR NE4 SW4, W1044', SE739' TO POB" Sec-29 Twp-20 Rng-20  
 FRED E BOYLES 1-00201220 "\$1,294.74" "BEG 1880' W OF NE SEC COR, S300', W336', N300', E336' TO POB" Sec-25 Twp-20 Rng-19  
 FRED BOYLES 1-00204650 \$25.54 GOLF CART SHED #12 Sec-19 Twp-20 Rng-20  
 FRED BOYLES JR 1-00206740 "\$4,142.50" Subd-PARKLANE ADD TO GARNETT Blk-3 Lot-7 & 8 Sec-30 Twp-20 Rng-20  
 FRED BOYLES JR 1-00214650 \$227.06 Subd-GARNETT Blk- 55 Lot-17 Sec-30 Twp-20 Rng-20  
 FRED BOYLES JR 1-03501500 Acres-158.60 \$628.06 W2 SE4 & E2 SW4 EX RD Sec-16 Twp-20 Rng-20  
 FRED BOYLES JR 1-04601600 Acres-320.30 "\$2,116.12" S2 SEC EX RD Sec-24 Twp-21 Rng-20  
 SETH C BRAND & KATIE L SIPE 1-00500570 \$523.72 "BEG 80'E OF SE COR LT 4, N100', E265', S100', W265' TO POB" Subd-KINCAID Blk- 2 Sec-36 Twp-22 Rng-20  
 SETH & KATIE BRAND 1-00501380 \$510.78 N16' OF W70' OF LT 12 Subd-KINCAID Blk- 14 Sec-36 Twp-22 Rng-20  
 SETH & KATIE BRAND 1-00501390 \$25.10 LTS 9-12 EX N16' OF W70' Subd-KINCAID Blk-14 Sec-36 Twp-22 Rng-20  
 JEROLD K BRONSTON 1-05000630 Acres-20 \$0.46 BARBARA BRONSTON ETAL Subd-MONT IDA Blk-11 Lot-14 Sec-18 Twp-21 Rng-19  
 DALE A BROOKS 1-00206090 "\$1,124.36" BEG 150'E & 245'N SW COR NE4 NW4, E150'" , N230', W150' S230' TO POB Sec-29 Twp-20 Rng-20  
 DALE A BROOKS 1-03502680 Acres-80 \$5.64 "BEG 150' E SW COR NE4 NW4, N245', E150', S245', W150' TO POB" Sec-29 Twp-20 Rng-20  
 DALE A BROOKS 1-08001960 Acres-8.20 \$710.89 NW4 NW4 W OF RR EX RD Sec-02 Twp-22 Rng-19  
 ERIC BROOKS 1-00500280 \$178.30 Subd-KINCAID Blk- 19 Lot-LT 5 & 6 Sec-36 Twp-22 Rng-20  
 GENIA BROWN 1-00700040 Acres-1.00 \$263.14 "BEG 1363.56' W SE COR SW4, TH N216.7', "W216.7', S216.7', E216.7' TO POB Sec-25 Twp-21 Rng-17"  
 THEODORE P & GENIA M BROWN 1-00700890 \$770.10 W92'LTS 13-17 & ALL LTS 18-24 INCL Subd-SUPPLEMENT TO MERRILL ADD Blk-5 Sec-36 Twp-21 Rng-17  
 VINCENT L & SHEILA BROWN 1-00701300 \$255.54 W80' LT 26 & S6' OF W80' OF LT 27 Subd-MERRILL'S ADD TO WESTPHAL Blk-15 Sec-36 Twp-21 Rng-17  
 VIRGINIA BROWN 1-00210310 \$764.76 "BEG NW COR LT 8 TH N70', E140', S70', W140' TO POB" Sec-30 Twp-20 Rng-19  
 TROY L BRUBAKER 1-00216200A "\$1,018.86" BEG AT A PT 6'8" W OF NW COR LT 8, TH "RUNNING E85'4" W, S130', TO S LN LT 7, TH "W85'4" TO CTR VAC ALY TH N130' TO POB" Subd-CHAPMANS ADD TO GARNETT Blk-14 Sec-30 Twp-20 Rng-20  
 ROGER & DONNA BRUMMEL 1-00209880 \$959.26 E10'LT 18 & W30'LT 19 Subd-GARNETT Blk- 36 Sec-30 Twp-20 Rng-20  
 ROGER & DONNA BRUMMEL 1-00214550 \$991.08 Subd-GARNETT Blk-55 Lot-W2 LT 8 Sec-30 Twp-20 Rng-20  
 DAVID BRYAN 1-03000070 Acres-1.20 \$211.62 "BEG NW COR SW4, E210', S271', W210', N TO POB EX RD" Sec-02 Twp-20 Rng-19  
 DORIS BUNCH 1-08000700 "\$1,281.06" "Subd-RAILROAD ADD TO WELDA Blk-25 Lot-1, 2, & 3" Sec-35 Twp-21 Rng-19  
 CHRISTOPHER J BURKERT 1-08001180 Acres-118.70 \$678.84 N2 NE4 & E2 E2 NW4 EX RD Sec-34 Twp-21 Rng-19  
 HOPE D BURNS 1-00500820 \$743.26 Subd-KINCAID Blk-26 Lot-7 & 8 Sec-36 Twp-22 Rng-20  
 C D SCHULTE AGENCY INC 1-00214420 \$496.77 "BEG 43.75'S NE COR LT 1 S21.5' W70', N21.5' E70', TO POB TO POB" Subd-GARNETT Blk- 54 Sec-30 Twp-20 Rng-20  
 JERRY RAY & CRYSTAL DAWN CAREY 1-00208840 "\$1,307.40" "Subd-GARNETT Blk- 23 Lot-4,5 & 6 Sec-30 Twp-20 Rng-20"  
 KENNETH R CARTWRIGHT 1-04100990 Acres-59.30 "\$1,349.58" "NANCY ROBINSON W2 NWFR4, EX S2 SW4 NWFR4, EX RD" Sec-19 Twp-20 Rng-21  
 AMY DAWN CASS 1-07201425 Acres-4.40 "\$1,342.80" "SPENCER W WEST BEG 360' E NW COR NW4, TH E490', S410', "W490', N410' TO POB EX RD Sec-12 Twp-23 Rng-17"  
 GARY R CAYLOR 1-04601110 Acres-76.80 \$644.40 S2 SW4 EX RD Sec-34 Twp-21 Rng-21  
 GARY R CAYLOR 1-11000140 Acres-138.40 "\$1,589.48" "NW4 , EX BEG 745.7' W NE COR NW4," "S378.3', W230.4', S 3 DEG W258', S 20" "DEG W139.6', W384.6', N 2 DEG W757.8', E723' TO POB & EX RD" Sec-03 Twp-22 Rng-21  
 GARY R CAYLOR 1-11000140A Acres-9.60

\$872.16 "BEG 745.7' W NE COR NW4, S378.3'" "W230.4', S 3 DEG W258', S 20 DEG" "W139.6', W384.6', N 2 DEG W757.8', E723' TO POB, EX RD" Sec-03 Twp-22 Rng-21  
 CDC LLC 1-00100891 \$79.16 Subd-COLONY Blk- 35 Lot-E2 LT 4 Sec-06 Twp-23 Rng-19  
 BRUCE L & JENNIFER CHAMBERS 1-00701070 \$520.60 Subd-SUPPLEMENT TO MERRILL ADD Blk- 8 Lot-17 TO 24 INCL Sec-36 Twp-21 Rng-17  
 BRUCE LEE & JENNIFER C CHAMBERS 1-00701390 \$220.62 "Subd-SUPPLEMENT TO MERRILL ADD Blk-17 Lot-22, 23, & 24" Sec-36 Twp-21 Rng-17  
 JAMES L CHAMBERS 1-02102290 Acres-4.30 \$75.90 % GENE CHAMBERS BEG 708' W N4 COR S TO CRK WA "LG CRK 528', N TO SEC LN, E TO B EG Sec-01 Twp-20 Rng-19"  
 JUSTIN D CHRISTENSEN TRUSTEE 1-04101170 Acres-76.70 \$117.06 JEAN H CHRISTENSEN TRUSTEE W2 NW4 EX RD Sec-30 Twp-20 Rng-21  
 HOWARD S & RUBY E CHRISTIAN 1-02700250 Acres-39.10 "\$2,376.32" N2 NE4 & N2 S2 NE4 EX BEG 355.9'S NE COR "NE4, W1472', S363.6', W129.1', S 8 DEG W" "221.2', S 65 DEG W674.5', W419.8'" Sec-10 Twp-20 Rng-18"  
 MICHELLE E CHUDZIK 1-00216160 \$92.14 RONALD K MCCAIN % JEREMY & ASHLEY MCCARTY Subd-CHAPMANS ADD TO GARNETT Blk- 15 Lot-12 & E34'LT11 Sec-30 Twp-20 Rng-20  
 CODY CHURCH 1-04000060 Acres-4.40 \$824.10 "BEG NE COR NW4, W335', S575', E335', N575', TO POB EX RD." Sec-03 Twp-20 Rng-21  
 WALTER SCOTT CHURCH IV 1-04000220 Acres-40.50 "\$1,103.16" NW4 SE4 EX RD Sec-09 Twp-20 Rng-21  
 ZOEY CLAIRE 1-00219160 \$56.36 Subd-MANDOVI ADD TO GARNETT Blk-26 Lot-6 & 7 W OF RR Sec-31 Twp-20 Rng-20  
 RUTH I CLAMON 1-00209310 \$372.10 WILLIAM MICHAEL RIDDLE Subd-GARNETT Blk-39 Lot-3 & 4 Sec-30 Twp-20 Rng-20  
 MICHAEL W COBBS 1-04600460 Acres-.90 \$156.15 LTS 7 THRU 12 & ABAN RR ADJ TO LT 7 Subd-BUSH CITY Blk-6 Sec-19 Twp-21 Rng-21  
 MICHAEL W COBBS 1-04600480 Acres-.80 \$133.34 "LTS 1,2,3 & ABAN RR ADJ Subd-BUSH CITY Blk-7" Sec-19 Twp-21 Rng-21  
 MICHAEL W COBBS 1-04600490 Acres-.50 \$8.28 Subd-BUSH CITY Blk-7 Lot-6 Sec-19 Twp-21 Rng-21  
 MICHAEL W COBBS 1-04600500 Acres-.30 \$5.06 Subd-BUSH CITY Blk-7 Lot-4 & 5 Sec-19 Twp-21 Rng-21  
 MICHAEL W COBBS 1-04600510 Acres-.60 \$9.66 Subd-BUSH CITY Blk-8 Lot-1-4 INCL Sec-19 Twp-21 Rng-21  
 MICHAEL W COBBS 1-04600520 Acres-.90 \$14.72 Subd-BUSH CITY Blk-8 Lot-7-12 INCL Sec-19 Twp-21 Rng-21  
 MICHAEL W & DEANN E COBBS 1-04600530 \$4.60 Subd-BUSH CITY Blk-8 Lot-5 & 6 Sec-19 Twp-21 Rng-21  
 MICHAEL W COBBS 1-04600540 \$5.67 "Subd-BUSH CITY Blk-9 Lot-6,7 EX E50" Sec-19 Twp-21 Rng-21  
 MICHAEL W & DEANN E COBBS 1-04600550 \$7.05 LTS 4 & 5 E50' LTS 6 & 7 Subd-BUSH CITY Blk-9 Sec-19 Twp-21 Rng-21  
 MICHAEL W & DEANN E COBBS 1-04600560 \$4.60 Subd-BUSH CITY Blk-9 Lot-3 Sec-19 Twp-21 Rng-21  
 MICHAEL W & DEANN E COBBS 1-04600590 \$7.36 "Subd-BUSH CITY Blk-10 Lot-1,2,3,4 & 5 Sec-19 Twp-21 Rng-21"  
 MICHAEL W & DEANN E COBBS 1-04600600 \$33.58 Subd-BUSH CITY Blk-10 Lot-13-18 Sec-19 Twp-21 Rng-21  
 ROBERT & ANN CONAWAY 1-00700920 \$416.11 Subd-SUPPLEMENT TO MERRILL ADD Blk-5 Lot-E75' LTS 7-12 Sec-36 Twp-21 Rng-17  
 ROBERT & ANN CONAWAY 1-06101320 Acres-1.80 \$131.02 "% TIM & RENNA CONAWAY BEG SE COR SW4, W412', N188', E412', S188'" TO POB EX RD Sec-25 Twp-21 Rng-17  
 GRANT A & GAYLA R CORLEY 1-02601780 Acres-47.70 "\$2,666.70" BEG SE COR SE4, N1297', W367', S733', W354', "N179', N24 DEG E397', N217', W266', ALG N LN" "S2, S1316', E850' TO POB ALSO Sec-35 Twp-20 Rng-17"  
 GRANT A & GAYLA R CORLEY 1-06100900 Acres-300.48 "\$4,907.54" S2 SEC EX NE4 NE4 SE4 & EX BEG NE COR SW "4, W750', S450', E750', N450' TO POB & EX RD Sec-01 Twp-21 Rng-17"  
 GRANT A & GAYLA R CORLEY 1-06101020 Acres-160.50 "\$2,239.50" E2 SW4 & W2 SE4 EX RD Sec-11 Twp-21 Rng-17  
 GRANT A & GAYLA R CORLEY 1-06101030 Acres-72.60 \$523.42 "E2 SE4, EX E2 NE4 SE4 SE4 & EX SW4 NE4 SE4 SE4 & EX RD" Sec-11 Twp-21 Rng-17  
 GRANT A & GAYLA R CORLEY 1-06101060 Acres-77.80 \$916.46 N2 NW4 EX RD Sec-12 Twp-21 Rng-17  
 TONYA CORNETT 1-00216930 "\$1,231.92" ALFRED F KATZER Subd-GARNETT Blk- 44 Lot-3 & 4 Sec-30 Twp-20 Rng-20  
 STACEY D CORWIN 1-00217830 \$334.32 "LISA D SNEDECOR LTS 11,12 & W10'LT 10 Subd-GARNETT Blk- 63" Sec-30 Twp-20 Rng-20  
 NANCY A COULBOURN 1-04500330A Acres-78.30 \$80.04 SW4 NE4 EX RD Sec-21 Twp-21 Rng-21  
 NANCY A COULBOURN 1-04500330 Acres-39.20 \$115.46 % JOHN CROAN NW4 SE4 EX RD Sec-21 Twp-21 Rng-21  
 CREEKSIDE PROPERTIES LLC 1-00208900 \$557.20 Subd-GARNETT Blk-23 Lot-17 Sec-30 Twp-20 Rng-20  
 CREEKSIDE PROPERTIES LLC 1-00209090 \$869.96 Subd-GARNETT Blk- 22 Lot-22 Sec-30 Twp-20 Rng-21  
 CREEKSIDE PROPERTIES LLC 1-00209100 \$819.64 Subd-GARNETT Blk-22 Lot-2 S2 LTS23 & 24 Sec-30 Twp-20 Rng-20  
 CREEKSIDE PROPERTIES LLC 1-00209590 \$600.34 Subd-GARNETT Blk-37 Lot-S62'LTS 1 & 2 Sec-30 Twp-20 Rng-20  
 CREEKSIDE PROPERTIES LLC 1-00209600 \$645.94 Subd-GARNETT Blk-37 Lot-N78'LTS 1 & 2 Sec-30 Twp-20 Rng-20  
 CREEKSIDE PROPERTIES LLC 1-00209620 \$718.22 Subd-GARNETT Blk-37 Lot-4 Sec-30 Twp-20 Rng-20

CREEKSIDE PROPERTIES LLC 1-00209640 \$673.94 Subd-GARNETT Blk-37 Lot-6 Sec-30 Twp-20 Rng-20  
 CREEKSIDE PROPERTIES LLC 1-00210210 \$695.88 "BEG SW COR LT 1, TH N40', E132', S40', W132' TO POB EX RD" Subd-BRYSON ADD TO GARNETT Blk-4 Sec-30 Twp-20 Rng-20  
 CREEKSIDE PROPERTIES LLC 1-00210420 \$873.18 "BEG 300'N NE COR LT 1, TH W177', N70', E177', S70' TO POB" Subd-GARNETT Sec-30 Twp-20 Rng-20  
 CREEKSIDE PROPERTIES LLC 1-00210560 "\$1,190.86" Subd-WHITEFORD ADD TO GARNETT Blk-2 Lot-14 Sec-30 Twp-20 Rng-20  
 CREEKSIDE PROPERTIES LLC 1-00215270 \$567.60 E36' LT 14 & W20' LT 15 Subd-GARNETT Blk-70 Sec-30 Twp-20 Rng-20  
 CREEKSIDE PROPERTIES LLC 1-00215490 \$424.00 LT 6 & W2 VAC ALLEY BET LTS 5 & 6 Subd-CHAPMANS ADD TO GARNETT Blk-4 Sec-30 Twp-20 Rng-20  
 CREEKSIDE PROPERTIES LLC 1-00215920 "\$1,039.86" LTS 11 & 12 & W2 VAC ALLEY BET LTS 12 & 13 Subd-CHAPMANS ADD TO GARNETT Blk-7 Sec-30 Twp-20 Rng-20  
 TREVOR W CRONIN 1-00207540 "\$1,692.64" Subd-PINEWAY ADD TO GARNETT Blk- 2 Lot-7 & E42.5 LT6 Sec-30 Twp-20 Rng-20  
 TAMMY CROUCHER 1-00700240 \$64.30 Subd-WESTPHALIA (corrected) Blk-1 Lot-7-9 Sec-36 Twp-21 Rng-17  
 JUSTIN CRUM 1-00204840 \$14.20 GOLF CART SHED #41 Sec-19 Twp-20 Rng-20  
 JUSTIN CRUM 1-00204980 \$11.36 GOLF CART SHED #55 Sec-19 Twp-20 Rng-20  
 PATRICIA ANN CUMMINGS 1-02700460 Acres-4.80 "\$1,239.14" "TINA CUMMINGS BEG SW COR NE4 N 300', E 686', " S 300', W 686'" TO BEG EX RD Sec-14 Twp-20 Rng-18"  
 DARRIN WILLIAM DAUGHERTY 1-00500620 \$57.48 Subd-KINCAID Blk- 3 Lot-12 Sec-36 Twp-22 Rng-20  
 BETTY JOY DAULTON 1-00200650 Acres-2.50 "\$1,520.64" BEG 60'W & 310'N OF SE SEC COR, W458", "N180', E11', N54', E450', S235' TO POB Sec-24 Twp-20 Rng-19"  
 CODY RYAN & LACIE JANE DAVIS 1-04601680 Acres-79.40 "\$1,748.62" SW4 NE4 & NW4 SE4 EX RD Sec-36 Twp-21 Rng-20  
 HUGH R & BETH L DAVIS 1-09300840A Acres-5.00 "\$1,793.18" ROBERT J DAVIS N 5 AC OF SE4 NW4 E OF R/W EX LY W OLD H WY EX RD Sec-06 Twp-23 Rng-19  
 JOHN R & HOLLY S DAVIS 1-00216580 \$81.56 Subd-CHAPMANS ADD TO GARNETT Blk- 25 Lot-3 & E2 LT 4 Sec-30 Twp-20 Rng-20  
 JOYCE W DEBRICK TTEE 1-00205840 "\$2,453.17" % JAMES D & VALERIE E TODD TTEES Subd-COUNTRY CLUB ADD GARNETT Lot-15 Sec-19 Twp-20 Rng-20  
 DENNIS DENLINGER 1-00214470 \$76.44 "BEG 3.5'E NW COR LT 2 S100' W.75', S40', W18', N140', E18.75" TO POB Subd-GARNETT Blk- 55 Sec-30 Twp-20 Rng-20  
 JON W DEPETRE 1-00217580A \$65.48 Subd-GARNETT Blk-59 Lot-19 Sec-30 Twp-20 Rng-20  
 THOMAS DEVANEY 1-00500910 \$20.50 "LT 1 BLK 30, TOG WADJ S1/2 VAC SECOND AVE" Subd-KINCAID Blk- 30 Sec-36 Twp-22 Rng-20  
 CALVIN D & PATRICIA A DEVOE 1-00501610 \$265.08 Subd-KINCAID Blk- 29 Lot-1 & N2 LT 2 Sec-36 Twp-22 Rng-20  
 KAYLA D DEVOE 1-11100040 Acres-4.70 \$634.74 "BEG 1253.4'E SW COR, N421.7', E506', S421.7', W506' TO POB" Sec-14 Twp-22 Rng-20  
 MATTHEW WAYNE DEVOE 1-00500940 \$325.96 Subd-KINCAID Blk- 30 Lot-5 & 6 Sec-36 Twp-22 Rng-20  
 DAVID J DICKES 1-00216720 "\$1,010.74" Subd-GARNETT Blk-41 Lot-6 & E2 LT 7 Sec-30 Twp-20 Rng-20  
 DAVID J DICKES 1-00216730 \$79.48 Subd-GARNETT Blk- 41 Lot-8 & W2 LT 7 Sec-30 Twp-20 Rng-20  
 WES DIETRICH 1-00101050 \$535.84 Subd-COLONY Blk-37 Lot-6-12 INCL Sec-06 Twp-23 Rng-19  
 ELSIE M DINGUS 1-00501410 \$477.74 "WILBUR C DINGUS JR Subd-KINCAID Blk-14 Lot-3, 4, 5 & 6" Sec-36 Twp-22 Rng-20  
 WILBUR C JR & ELSIE DINGUS 1-00501320 \$61.64 Subd-KINCAID Blk-14 Lot-1 & 2 Sec-36 Twp-22 Rng-20  
 CHERYL & JAMES DUNKIN 1-00214090 "\$1,111.76" Subd-GARNETT Blk-53 Lot-3 & W2 LT 2 Sec-30 Twp-20 Rng-20  
 MAURICE & PAT DURAND 1-12000680 Acres-77.20 \$140.54 W2 NW4 EX RD Sec-09 Twp-23 Rng-21  
 MAURICE & PATRICIA L DURAND 1-12000790 Acres-8.40 \$14.52 S10 AC W2 SW4 EX RD Sec-05 Twp-23 Rng-21  
 MAURICE & PATRICIA L DURAND 1-12000890 Acres-8.50 \$76.70 S10 AC E2 SE4 EX RD Sec-06 Twp-23 Rng-21  
 MAURICE & PATRICIA L DURAND 1-12000940 Acres-79.20 \$345.76 E2 NE4 Sec-07 Twp-23 Rng-21  
 MAURICE & PATRICIA L DURAND 1-12001020 Acres-159.40 \$920.22 NW4 EX RD Sec-08 Twp-23 Rng-21  
 MILO JR & PATRICIA DURAND 1-12000860 Acres-7.00 \$834.98 W2 NW4 LY N & W CO RD EX BEG 247'S NW "SEC COR, S100', E120', N100', W TO POB & EX" BEG 580'E & 348'S, W195', S100', E195', N SEC-06 Twp-23 Rng-20  
 DALE L EASLEY 1-00101320 \$200.26 % DAVID LEE & MARIE MAE SLIFE Subd-COLONY Blk- 47 Lot-9 & 10 Sec-06 Twp-23 Rng-19  
 GLENN E & MAE E EAST 1-00700160 \$951.08 "% JEFF EAST LOTS 11,12,13 & 14 TOG W/VAC ALLEY ADJ" Subd-FLUSCHER ADD TO WESTPHAL Sec-25 Twp-21 Rng-17  
 JACOB EDGERTON 1-00501290 \$492.16 Subd-KINCAID Blk- 1 Lot-12 & 13 Sec-36 Twp-22 Rng-20  
 JACOB EDGERTON 1-00501300 \$24.68 Subd-KINCAID Blk- 1 Lot-11 Sec-36 Twp-22 Rng-20  
 ZACHARY ALLEN EDGERTON 1-12000010 Acres-2.40 \$143.04 "STEPHANIE MARIE EDGERTON BEG NE COR SEC W428', S265', E428'" "N265' TO POB EX RD Sec-25 Twp-22 Rng-20"

DAVID & SANDRA EISENBRANDT 1-00502000 \$50.30 Subd-SOUTH ADD TO KINCAID Blk-16 Lot-12 & 13 Sec-01 Twp-23 Rng-20  
 EL CONCEPT LLC 1-00203360 \$379.48 Subd-SMITH'S ADD TO GARNETT Blk- 1 Lot-19 & W2 LT 20 Sec-25 Twp-20 Rng-19  
 PHYLLIS EVANS 1-00208550 \$278.62 Subd-GARNETT Blk- 16 Lot-9 Sec-30 Twp-20 Rng-20  
 LISA A FAIR 1-00700220 \$61.66 Subd-WESTPHALIA (corrected) Blk- 1 Lot-4-6 INC Sec-36 Twp-21 Rng-17  
 LISA ANN FAIR 1-00700220A \$45.08 Subd-WESTPHALIA (corrected) Blk- 1 Lot-1-3 INC Sec-36 Twp-21 Rng-17  
 ROBERT B & VICTORIA J FAULKNER 1-00101530 \$667.46 "Subd-COLONY Blk- 51 Lot-7,8 & W10'LT9 Sec-06 Twp-23 Rng-19"  
 EARNEST C FERGUSON 1-00216310 \$294.76 "LTS 1,4,5,8,9,12 & NW VAC ST" Subd-CHAPMANS ADD TO GARNETT Blk- 11 Sec-30 Twp-20 Rng-20  
 EARNEST C FERGUSON 1-00216320 "\$1,686.02" LTS 1-4 & S2 VAC ST & N83' LTS 5-10 & ALL VAC ALY Subd-CHAPMANS ADD TO GARNETT Blk-20 Sec-30 Twp-20 Rng-20  
 JAMES L FERGUSON 1-03500950 Acres-36.30 \$298.98 NE FR4 NE4 EX RD Sec-17 Twp-20 Rng-20  
 MARCUS Z FERGUSON 1-00201370 \$793.90 "BEG 1504'W & 490'S OF NE SEC COR, E188', S630', W173', N95', W15'" N535 TO POB Sec-25 Twp-20 Rng-19  
 ROBERT R & FERN E FERGUSON 1-00500240 \$136.52 Subd-KINCAID Blk-19 Lot-1 TO 4 INCL Sec-36 Twp-22 Rng-20  
 BLAKE FEUERBERG 1-00300820 "\$1,737.98" Subd-GREELEY Blk- 50 Lot-N120'LTS 5-8 Sec-30 Twp-19 Rng-21  
 BECKY SUE FEWINS 1-00500620A \$526.02 "Subd-KINCAID Blk- 3 Lot-9,10,11 Sec-36 Twp-22 Rng-20"  
 JOHN WESLEY FICKEL 1-00217880 \$554.36 Subd-GARNETT Blk-63 Lot-23 & 24 Sec-30 Twp-20 Rng-20  
 KELLY FORBES-JONES 1-00210580 \$9.27 GEORGE BURTON WADDE W3'OF E100'LT 13 Subd-WHITEFORD ADD TO GARNETT Blk- 2 Sec-30 Twp-20 Rng-20  
 SHARON L FRITZ 1-00209370 \$593.72 E2 LT 14 & W2 LT 15 Subd-GARNETT Blk-39 Sec-30 Twp-20 Rng-20  
 DONNY FULTZ 1-00219180 Acres-.30 \$85.14 JANETTE FULTZ "Subd-MANDOVI ADD TO GARNETT Blk- 26 Lot-1,2 & 3 E RR" Sec-31 Twp-20 Rng-20  
 DONNY FULTZ 1-00219190 \$1.51 JANETTE FULTZ Subd-MANDOVI ADD TO GARNETT Blk- 26 Lot-4 E OF RR Sec-31 Twp-20 Rng-20  
 DONNY FULTZ 1-00219200 Acres-1.00 \$110.50 JANETTE FULTZ Subd-MANDOVI ADD TO GARNETT Blk- 27 Lot-1 TO 10 INCL Sec-31 Twp-20 Rng-20  
 HARRY FUNK III 1-00215000 \$390.12 "BEG 10'E SW COR LT 14, N140', E40', S48', "E4.5', S55', SW10', S29', W40' TO POB Subd-GARNETT Blk-68" Sec-30 Twp-20 Rng-20  
 HARRY S & CONNIE JO FUNK III 1-00501660 \$20.92 "LT 11, TOG WADJ E1/2 VAC BLAKER ST Subd-KINCAID Blk- 29" Sec-36 Twp-22 Rng-20  
 HARRY S & CONNIE JO FUNK III 1-00501690 80.92 Subd-KINCAID Blk- 29 Lot-6 Sec-36 Twp-22 Rng-20  
 HARRY FUNK III 1-00501730 Acres-5.10 \$21.34 "ALL BLK 42, & BEG SW COR SE4, N100' SW" "SW COR BLK 42, E500' SW COR LT 9 BLK 29," "S100', W500' TO POB, ALG W/ ADJN S2 VAC" "FIRST ST & ADJN W2 BLAKER ST, EX RD R/W Subd-KINCAID" Sec-36 Twp-22 Rng-20  
 JAMES L & MARY A GAINER 1-00202500A \$507.08 "COMG N60' SE COR NE4, W40' TO POB," "N37.9', W100', TO TRUE POB, TH N109.51'," "W75', S109.54', E75' TO TRUE POB," FORMERLY LYG IN VAC ORCHARD PARK ADD BLK Subd-NEW ORCHARD PARK ADD Sec-25 Twp-20 Rng-19  
 JAMES L GAINER 1-00202510 "\$2,254.98" BEG 37.9' N SECOR NE4, N110', W100', S 109', E100' TO POB" Subd-NEW ORCHARD PARK ADD Sec-25 Twp-20 Rng-19  
 JAMES L GAINER 1-00208580 \$93.48 Subd-GARNETT Blk-16 Lot-13 & 14 Sec-30 Twp-20 Rng-20  
 JAMES L GAINER 1-00212660 223.70 Subd-GARNETT Blk-32 Lot-13 Sec-30 Twp-20 Rng-20  
 JAMES L GAINER 1-00212670 "\$1,760.00" Subd-GARNETT Blk-32 Lot-14 15 & W2 16 Sec-30 Twp-20 Rng-20  
 JAMES L GAINER 1-00213590 \$379.36 LOT 16 & E10' LOT 15 & W30' LOT 17 Subd-GARNETT Blk-48 Sec-30 Twp-20 Rng-20  
 JAMES L GAINER 1-00216970 \$769.86 Subd-GARNETT Blk-44 Lot-11 12 & W2 10 Sec-30 Twp-20 Rng-20  
 JAMES L GAINER 1-00217140 \$337.24 Subd-GARNETT Blk-45 Lot-N2 LT 24 Sec-30 Twp-20 Rng-20  
 JAMES L GAINER 1-00218230 \$468.66 LOTS 10-12 INCL & W2 LOT 9 Subd-GARNETT Blk-77 Sec-30 Twp-20 Rng-20  
 SAM C & GENNA M GALLAHER 1-08001740 Acres-59.20 "\$2,856.92" W60 AC OF NE4 S OF HWY EX RD Sec-02 Twp-22 Rng-19  
 ESTHER & MARIO GARCIA 1-00215010 \$320.82 "BEG SE COR LT 16 W70', N2

## TAXES...

FROM PAGE 2B

HW HOLDINGS LLC 1-00500710 \$26.34 Subd-KINCAID Blk- 12 Lot-5 & 6 Sec-36 Twp-22 Rng-20

F R JACK 1-03502960 Acres-1.0 \$4.64 E O BOYLE % PHYLLIS WARREN "BEG 31.6'E & 60'N SW COR NW4 SW4, N140', E40', S140', W40'TO POB" Subd-PRAIRIE PLAZA ADD Blk-03 Sec-29 Twp-20 Rng-20

JAMES E & TONIA JACKSON 1-00700440 \$410.92 Subd-WESTPHALIA (corrected) Blk-12 Lot-1-6 INCL Sec-36 Twp-21 Rng-17

JAMES E & TONIA JACKSON 1-00700450 \$49.66 "Subd-WESTPHALIA (corrected) Blk-12 Lot-10, 11 & 12" Sec-36 Twp-21 Rng-17

ROBERT WINSTON JAMESCUPP 1-02000050 Acres-1.90 \$297.96 "VICTORIA ROSE JAMESCUPP BEG NW COR NW4 E280', S325', "W280', N TO POB EX RD Sec-20 Twp-19 Rng-19"

JONATHAN R & CARRIE L JARRED 1-003000680 \$320.38 "Subd-GREELEY SUBDIVISION Blk- 28 Lot-17,18" Sec-30 Twp-19 Rng-21

JERRY W & CATHERINE M JASPER 1-00217590 \$180.34 "LOTS 21, 22 & W14' LOT 23 BLK 59 Subd-GARNETT Blk-59" Sec-30 Twp-20 Rng-20

JO LYNN JEWELL 1-00216480 \$455.40 "MICHAEL ALLEN MILLS LTS 16 & 17, W18LT 18 & E2' VAC ALY BET LTS 15 & 16 Subd-CHAPMANS ADD TO GARNETT Blk- 18 Sec-30 Twp-20 Rng-20

JM SELF LLC 1-00208520 \$99.52 Subd-GARNETT Blk- 16 Lot-4 & W2 LT 3 Sec-30 Twp-20 Rng-20

JYB LLC 1-05000200B Acres-120.00 "S1,365.14' SE4 EX S660' Sec-05 Twp-21 Rng-19

CHRIS KANAWYER 1-00218190 \$421.92 WENDEL KANAWYER Subd-MELIZA ADD TO GARNETT Blk- 1 Lot-1 Sec-30 Twp-20 Rng-20

STEPHANIE A KATZER 1-00301320 "S1,578.80' ANTHONY R KLINE LOT 13 & E2 LOT 14 & W2 VAC ALY ADJ Subd-GREELEY Blk-62 Sec-30 Twp-19 Rng-21

STEPHANIE KATZER 1-00301450 \$288.50 "BEG NECOR LOT 8, W38', S100', E20', N3", "E18', N97' TO POB BLK 48 GREELEY Subd-GREELEY Blk-48" Sec-30 Twp-19 Rng-21

TRAVIS E KATZER 1-04000590A Acres-15.59 \$331.17 "N2 SW4 SE4, EX E2 NE4 SW4 SE4 & 8' RD Sec-21 Twp-20 Rng-21"

TRAVIS E & LINDY H KATZER 1-04000590B Acres-5.29 "S1,689.67" E2 NE4 SW4 SE4 Sec-21 Twp-20 Rng-21

JOHN G & DOLORES KAUFMAN 1-00301040 \$222.42 "LILLY GILES BEG ON E LN MARY ST 624'N OF S SEC LN," "E180', N90', W180', S90' TO POB BEING PT OF SE4" Sec-30 Twp-19 Rng-21

E SCOTT & DIEDRA A KEELER 1-00212250 "S1,067.68" Subd-GARNETT Blk-29 Lot-5 & W2 LT 4 Sec-30 Twp-20 Rng-20

MAHLON & TERESA KEIM 1-02602850 Acres-80.20 "S1,102.43" N2 SE4 EX RD Sec-27 Twp-20 Rng-18

MAHLON L KEIM 1-03100270 Acres-150.50 \$707.86 "NW4 EX BEG NECOR, W611', S372', SE278', E550', N TO POB EX RD" Sec-08 Twp-20 Rng-19

NANCY A G KEMPNIICH 1-08000720 \$84.72 "Subd-RAILROAD ADD TO WELDA Blk-25 Lot-7, 8 & 9" Sec-35 Twp-21 Rng-19

JOHN A KENT JR 1-00217630 "S1,947.52" "LOTS 1-4 INCL EX BEG NECOR LOT 1, TH S" "21.33', NW TO PT 18.33' W OF BEG, TH E 18.33' TO POB" Subd-GARNETT Blk-61 Sec-30 Twp-20 Rng-20

JOHN A KENT JR 1-00217640 \$149.66 Subd-GARNETT Blk-61 Lot-5-8 INCL Sec-30 Twp-20 Rng-20

MARTHA A KICHLER 1-03100820 Acres-3.00 "S1,460.52" % MARTHA A DEHN BEG 203.6'W SE COR SW4, W300', N436', E300' "S426" TO POB Sec-16 Twp-20 Rng-19"

RICHARD ALAN & CASSANDRA DAWN KINDER 1-00212700 \$685.30 Subd-GARNETT Blk- 32 Lot-20 & E2 LT 19 Sec-30 Twp-20 Rng-20

ADAM & SHANNON KING 1-00201670B \$243.50 "COM AT A PT 1692'W & 60'N SE COR NE4, TH W80', N177.5', E80', S177.5' TO POB EX RD Sec-25 Twp-20 Rng-18"

KATHY J KING 1-00215560 \$539.60 Subd-GARNETT Blk- 73 Lot-4 & E36LT 5 Sec-30 Twp-20 Rng-20

JUSTIN & ROCHELLE KOHLMEIER 1-00206680 "S1,199.85" Subd-PARKLANE ADD TO GARNETT Blk- 3 Lot-16 Sec-30 Twp-20 Rng-20

DENNIS C LANDWEHR JR 1-00301690 \$38.04 Subd-GREELEY Blk- 41 Lot-10 Sec-30 Twp-19 Rng-21

DENISE G LAW 1-00214460 "S1,103.44" BEG NE COR LT 2, S140', W37.3', NW40', E9", N100', E36.6'TO POB" Subd-GARNETT Blk-55 Sec-30 Twp-20 Rng-20

JAMES D & CONNIE LAYNE 1-00205810 \$191.12 "BEG 1122'E & 40'N OF SWCOR SE4, N148", "W132', S148', E132' TO POB Sec-30 Twp-20 Rng-20"

RILEY-WAYNE J LEE 1-00218390 \$172.38 JANE L LEE Subd-MANDОВИ ADD TO GARNETT Blk- 2 Lot-6-10 EX RR Sec-31 Twp-20 Rng-20

RILEY-WAYNE J LEE 1-00218400 \$130.18 JANE L LEE Subd-MANDОВИ ADD TO GARNETT Blk- 2 Lot-11-13 Sec-31 Twp-20 Rng-20

LEON M & JANE C LICKTEIG 1-02100210 Acres-119.90 "S1,388.50" S120 AC OF SE4 LESS BEG SW COR SE4 TH "E36.5', N1320', W16.5', N660', W20' S TO POB" Sec-21 Twp-19 Rng-20

LEON M & JANE C LICKTEIG 1-02100510A Acres-80.00 \$97.85 N2 NE4 Sec-28 Twp-19 Rng-20

DONN A LIDDL 1-04700230 Acres-77.40 \$415.82 E2 SE4 EX RD Sec-16 Twp-21 Rng-20

DANIEL C LILE SUPPLEMENTAL NEED TRUST 1-04000090 Acres-1 \$830.68 "SE4 EX RD LESS BEG SE COR SE4 TH N540", "W711', N115', W240', S655', E591' TO POB Sec-03 Twp-20 Rng-21"

MAURICE & DELENE LINDBERG 1-00100770 \$59.28 Subd-COLONY Blk-33 Lot-6 & 7 Sec-06 Twp-23 Rng-19

MELISSA LOGAN 1-10500050 Acres-117.20 \$365.98 "W2 SE4 & SE4 SW4 EX BEG SWCOR SE4, N429" "E526", S429", W526" TO POB EX RD Sec-25 Twp-22 Rng-19"

MELISSA LOGAN 1-10500060 Acres-77.30

"S1,082.38" E2 SE4 EX RD Sec-25 Twp-22 Rng-19

KEVIN & STEPHANIE LOVING 1-00100960 \$391.20 Subd-COLONY Blk-35 Lot-10 Sec-06 Twp-23 Rng-19

KEVIN T & STEPHANIE J LOVING 1-00100970 \$68.82 Subd-COLONY Blk- 35 Lot-11 & 12 Sec-06 Twp-23 Rng-17

DAVID L LUCAS 1-00208600 \$674.22 Subd-GARNETT Blk-16 Lot-17 & 18 Sec-30 Twp-20 Rng-20

DAVID L LUCAS 1-00214800 \$165.48 Subd-GARNETT Blk-67 Lot-9 Sec-30 Twp-20 Rng-20

DAVID LUCAS 1-00215180 \$613.22 Subd-GARNETT Blk-69 Lot-16 & W2 LT 17 Sec-30 Twp-20 Rng-20

CRAIG ALAN LUEDKE 1-09300070 Acres-39.00 \$151.64 NW4 NW4 EX RD Sec-27 Twp-22 Rng-19

CRAIG ALAN LUEDKE 1-09300090 Acres-81.20 \$643.12 E2 NE4 Sec-07 Twp-23 Rng-19

ALFONSO LUNA 1-12001600 Acres-2.90 \$91.34 "JESSIE J HAYNES BEG SECOR NE4 SE4, N198', W770', S198', E TO POB EX RD Sec-13 Twp-23 Rng-20

VICTORIA L LUTZ 1-00202881 "S1,658.40" BEG 1258' E & 40'S NW COR SE4, S225.31" "W 104.66', N100', W17.5, N66' E120.95' POB" Subd-E S NICHOLS SUBDIVISION Sec-29 Twp-20 Rng-20

ROGER G & DEBERA L MAC 1-00206100 \$955.10 "BEG NE COR LT 5 E150', S200', W150', N200', TO POB" Subd-E S NICHOLS SUBDIVISION Sec-29 Twp-20 Rng-20

ROGER G & DEBERA L MAC 1-03502670 \$13.30 "BEG SW COR NE4 NW4, N275', E150' S275', W150' TO POB" Sec-29 Twp-20 Rng-20

AMY S MACKLIN 1-00217361 \$476.98 Subd-GARNETT Blk-57 Lot-16 & E10LT15 Sec-30 Twp-20 Rng-20

EDWARD A MANWILLER 1-00600480 \$97.98 % REBECCA RENDELL Subd-LONE ELM Blk-10 Lot-16,17, & 18" Sec-06 Twp-23 Rng-19

ROBERT JASON MARRALI 1-00701400 \$268.36 LTS 19 THRU 21 & N7LT 18 Subd-SUPPLEMENT TO MERRILL ADD Blk- 17 Sec-36 Twp-21 Rng-17

MARTIN OIL PROPERTIES 1-03501680A \$235.94 LEASE LAND CARD Sec-22 Twp-20 Rng-20

PATRICIA ANN MASINGILL 1-00208210 \$551.34 Subd-GARNETT Blk-19 Lot-22 & W15LT23 Sec-30 Twp-20 Rng-20

MICHAEL W MASON 1-00212900 \$85.46 W2 LT4 & E30' LT5 Subd-GARNETT Blk-34 Sec-30 Twp-20 Rng-20

DALE & CINDY MCALPINE 1-00213200 "S1,866.82" Subd-GARNETT Blk- 35 Lot-16 & W2 LT 17 Sec-30 Twp-20 Rng-20

THOMAS W MCCULLOUGH 1-00217620 Acres-1.00 "S1,199.94" Subd-GARNETT Blk-60 Lot-9-16 INCL Sec-30 Twp-20 Rng-20

LELAND R MCGRAW 1-08000550 \$403.84 "Subd-RAILROAD ADD TO WELDA Blk-21 Lot-3, 4, & 5" Sec-35 Twp-21 Rng-19

DONALD L MCMAHAN 1-00300115 \$112.62 % NORA BAGLEY W2 LT 7 & 8 ALG W/VAC ALY & STS Subd-GREELEY Blk- 59 Sec-30 Twp-19 Rng-21

STEPHANIE L MCNEILL 1-00208910 \$208.14 MITCHEAL MALONE Subd-GARNETT Blk- 23 Lot-18 Sec-30 Twp-20 Rng-20

BEN J MCREYNOLDS 1-00501990 \$47.28 Subd-SOUTH ADD TO KINCAID Blk-16 Lot-14 & S2 LT 15 Sec-01 Twp-23 Rng-20

JEFFREY MEATS 1-00501180 \$317.27 Subd-KINCAID Blk- 13 Lot-3 & N40LT 4 Sec-36 Twp-22 Rng-20

JUSTIN & CRYSTAL METCALFE 1-02100830 Acres-9.50 "S1,786.74 "BEG 1321.5'W NE COR NE4, S502.5', E245.7', S542.8', S26" "DEG E240', S98.5', E ALG RD 150' N875', W100', N400', W395' TO SE-29 Twp-19 Rng-20

WILLIS METOBO 1-00214370 \$748.90 \$39.66LT 1 & S39.66'E70LT 2 Subd-GARNETT Blk- 54 Sec-30 Twp-20 Rng-20

DEAN C & ANGELA MIKESSELL 1-00208680 \$672.04 Subd-GARNETT Blk-25 Lot-1 & 2 Sec-30 Twp-20 Rng-20

DEAN C & ANGELA MIKESSELL 1-05100460 Acres-5.30 "S1,256.88" E346.7' W660' NW4 NE4 LY N OF CK EX HWY R/ E Sec-19 Twp-21 Rng-20

AMOS J MILLER JR 1-02602530 Acres-39.40 \$742.60 "KENNETH M YODER NW4 NW4, EX RD Sec-25 Twp-20 Rng-18"

DAVID L & GERTRUDE MILLER 1-03501940 Acres-24.20 "S1,597.16" E24 AC S2 SW4 EX RD Sec-23 Twp-20 Rng-20

LILLIAN M MILLER 1-00210800 \$967.40 Subd-GARNETT Blk-10 Lot-1 & 2 Sec-30 Twp-20 Rng-20

LINDA M MILLER 1-08100190 Acres-40.00 \$126.52 NW4 SE4 Sec-32 Twp-21 Rng-19

RANDALL A & REGINA M MILLER 1-00219050 \$68.20 Subd-MANDОВИ ADD TO GARNETT Blk-19 Lot-16 & 17 Sec-31 Twp-20 Rng-20

ALLEN CHET MODLIN 1-08001980 \$91.86 Subd-WELDA Blk- 3 Lot-10-12 Sec-02 Twp-22 Rng-19

ALLEN CHET MODLIN 1-08002000 \$842.78 Subd-WELDA Blk- 3 Lot-N977-9 Sec-02 Twp-22 Rng-19

KIM F MORGAN 1-08000840 \$675.38 "Subd-RAILROAD ADD TO WELDA Blk-27 Lot-S2 LTS 7,8,9" Sec-35 Twp-21 Rng-19

TRUDIE MORGAN ETAL 1-04100170 Acres-149.00 \$624.38 % PEGGY ANN MORGAN E2 NW4 LY S & E RD & S2 NE4 & S10 AC NW4 NE4 Sec-13 Twp-20 Rng-20

WILLIAM GLENN MORRIS JR ETAL 1-03502710 Acres-3.30 \$160.88 "BEG NECOR BLK 1, GARNETT, E574', S371.6" "W284.3', N188', W284.5', N176' TO POB Sec-29 Twp-20 Rng-20"

WILLIAM GLENN MORRIS JR 1-04000420 Acres-29.30 \$229.76 N30 AC S2 NW4 Sec-15 Twp-20 Rng-21

RALPH V & PATRICIA E MOSS 1-05101480 Acres-39.60 "2,124.00" SW4 SW4 EX RD Sec-24 Twp-21 Rng-19

VICKIE MOSS 1-00211440 \$464.86 % VICKIE MOSS Subd-GARNETT Blk- 13 Lot-5 & W15LT 4 Sec-30 Twp-20 Rng-20

MARTHA A MOYER 1-10200160 Acres-116.60 \$613.12 SW4 NW4 & W2 SW4 EX RD Sec-08 Twp-22 Rng-20

MICHELLE MOYER 1-08000600 \$641.86 "Subd-RAILROAD ADD TO WELDA Blk- 23 Lot-1, 2, & 3" Sec-35 Twp-21 Rng-19

CODY & NATASHA MUNDELL 1-03502060A Acres-79.74 \$432.23 E2 NE4 & SW4 NE4 & S2 NW4 NE4 & E440' S495' NW4 Sec-35 Twp-20

Rng-20

KATHLEEN ANN MYERS 1-07000430 Acres-79.50 \$621.74 S2 SW4 EX RD Sec-08 Twp-22 Rng-18

PATRICIA A MYERS 1-00700232 \$658.64 KENDRA CHASE Subd-WESTPHALIA (corrected) Blk- 1 Lot-12 & N2 LT 11 Sec-36 Twp-21 Rng-17

MONTY L & CARLAD NELSON 1-12001080A Acres-38.50 "S1,351.54" SW4 SE4 Sec-17 Twp-23 Rng-20

DOUGLAS L & TAMMIE J NEUDECK 1-00500190 Acres-1.80 \$58.92 Subd-KINCAID RESERVE STRIP Blk-0.5 Sec-36 Twp-22 Rng-20

DOUGLAS L & TAMMIE J NEUDECK 1-00500190A Acres-20 \$0.63 N2 OF E195' VAC FOURTH AVE LY S OF BLK 0.5 KINCAID RESERVE STRIP Subd-KINCAID RESERVE STRIP Blk-0.5 Sec-36 Twp-22 Rng-20

CARRIE O NICHOLAS 1-00208370 \$814.34 Subd-GARNETT Blk- 18 Lot-23 & 24 Sec-30 Twp-20 Rng-20

TOMMY J NICKELL JR 1-00208290 \$963.62 KERRY A NICKELL Subd-GARNETT Blk- 18 Lot-9 & 10 Sec-30 Twp-20 Rng-20

BEVERLY NORTH 1-00200760 "S1,292.28" % ALBERT EUGENE JR & STEPHANIE THACKER Subd-BAILEYS ORCHARD PARK ADD Blk-7 Lot-16 & N35' 15 Sec-25 Twp-20 Rng-19

LOUIS NUNEZ JR 1-00500260 \$24.78 "Subd-KINCAID Blk-19 Lot-13, 14 & 15 Sec-36 Twp-22 Rng-20"

RHONDA S O'BANNON 1-04000690 \$25.32 "BEG NECOR NW4 S110', W414', N110', E414' TO POB, EX RD" Sec-27 Twp-20 Rng-21

CARLA I OLDS 1-00500700 \$72.60 Subd-KINCAID Blk- 12 Lot-7 & 8 Sec-36 Twp-22 Rng-20

JOHN L OSBORN 1-04000260 Acres-40.10 "S2,586.05" NE4 NW4 EX RD Sec-10 Twp-20 Rng-21

EUGENE P & WETA M OWEN TTEES 1-04000940A Acres-59.30 \$150.14 % DAVID CASTLEBERRY SR ETAL S 60 AC, N2 SW4, EX RD." Sec-34 Twp-20 Rng-21

SUSAN J OWENS 1-00212290 \$794.08 Subd-GARNETT Blk-29 Lot-12 & W2 LT 11 Sec-30 Twp-20 Rng-20

BRADLEY PADEN 1-00500980 \$327.10 Subd-KINCAID Blk- 27 Lot-7 TO 10 INCL Sec-36 Twp-22 Rng-20

CHARLES L & LAURA PARKS 1-00211280 \$667.88 RICHARD LEE PARKS % RICHARD PARKS Subd-GARNETT Blk- 12 Lot-1 & E2 LT 2 Sec-30 Twp-20 Rng-20

KENNETH V PARRIS 1-00301030 \$803.94 "BEG ON E LN MARY ST 714'N OF S SEC LN, E180', N80', W180', S80" "TO POB, BEING PT SE4 Sec-30 Twp-19 Rng-21"

ALFREDO PARTIDA & REGINA HONN 1-00209140 \$902.03 "Subd-GARNETT Blk- 21 Lot-5,6 & E30LT7 Sec-30 Twp-20 Rng-20"

JEFF PATTERSON 1-00211720 \$473.58 S56'0F E26.66'0F LT 23 & S56' LT 24 Subd-GARNETT Blk- 14 Sec-30 Twp-20 Rng-20

RONALD J PEINE 1-03501510 Acres-117.50 "S2,326.25" NE4 NW4 & W2 NE4 EX RD Sec-16 Twp-20 Rng-20

ERVIN PICKERING JR 1-00701180 \$280.08 Subd-MERRILL'S ADD TO WESTPHAL Blk- 9 Lot-8-12 Sec-36 Twp-21 Rng-17

SAMUEL WAYNE PITTS ETAL 1-00701350 \$51.06 Subd-MERRILL'S ADD TO WESTPHAL Blk- 16 Lot-16 & 17 Sec-36 Twp-21 Rng-17

SAMUEL WAYNE PITTS ETAL 1-00701370 \$646.50 LTS 7 THRU 11 INCL Subd-MERRILL'S ADD TO WESTPHAL Blk- 16 Sec-36 Twp-21 Rng-17

PAUL PIZZO 1-12001580 Acres-2.10 \$ 65.12 "BEG SW COR NE4 SE4 N198', E550, S198', W TO POB EX RD" Sec-13 Twp-23 Rng-20

JIM POE 1-02605400 \$67.96 Subd-HARRIS Blk- 18 Lot-12 TO 18 INCL Sec-08 Twp-20 Rng-18

RUSSELL E PRATER 1-00217840 \$367.70 "Subd-GARNETT Blk- 63 Lot-13,14 & 15 Sec-30 Twp-20 Rng-20"

DAVID E & KATHY J PRESTON 1-09300740 Acres-4.87 \$786.64 "W2 NW4 SE4 SW4, EX RD Sec-05 Twp-23 Rng-19"

LORA BETH PROCK 1-00101930A \$41.29 Subd-GRACELAND ADD TO COLONY Blk- 4 Lot-22-28 INCL Sec-06 Twp-23 Rng-19

LINDA L PRUITT 1-00500410 \$532.40 Subd-KINCAID Blk- 18 Lot-1 THRU 8 Sec-36 Twp-22 Rng-20

PAMELA PUNTENEY ETAL 1-00209430 \$626.26 N2 LTS 1-2 & N2 E2 LT 3 Subd-GARNETT Blk- 38 Sec-30 Twp-20 Rng-20

PAMELA PUNTENEY ETAL 1-00217470 \$478.30 "Subd-GARNETT Blk- 58 Lot-22,23 & 24 Sec-30 Twp-20 Rng-20"

EDDIE JERRY LEE & TINA MARIE RADFORD 1-00101280 \$73.74 "LTS 1,2 & E12.5LT 3 Subd-COLONY Blk-47 Sec-06 Twp-23 Rng-19"

DANIEL J RAMSEY 1-10501360 Acres-1.80 \$764.94 "BEG 359.7'S NWCOR SW4 SW4 E440.22" "S198', W440.22', N TO POB EX RD Sec-06 Twp-23 Rng-20"

BRENT A & BRANDI D RANDEL 1-02101440A Acres-4.70 "S1,242.92" BEG 330'N SE COR SE4, N660', W330', S660', E330', TO POB, EX RD" Sec-22 Twp-19 Rng-19

MARK EUGENE RAY 1-00100030 \$615.82 % ELIZABETH L REISSIG Subd-COLONY Blk-1 Lot-6, 7 & 8" Sec-06 Twp-23 Rng-19

KENNETH C & DOLORES J REDIFER 1-02100090 Acres-20.10 "S1,936.40" BEG E LN SD SEC & 1246.8' N SECOR, N "1229.7', W712.5', S1229.7', E712.5' TO POB EX RD" Sec-19 Twp-19 Rng-20

LARRY REDMAN 1-08000710 \$359.10 "Subd-RAILROAD ADD TO WELDA Blk- 25 Lot-4, 5 & 6" Sec-35 Twp-21 Rng-19

RICHARD J & KAREN S REED 1-02601360 Acres-158.00 "S4,673.64" SE4 EX RD Sec-12 Twp-20 Rng-17

DANIEL E & HONEY M RENYER 1-00701330 \$984.22 Subd-MERRILL'S ADD TO WESTPHAL Blk-16 Lot-1-6 INCL Sec-36 Twp-21 Rng-17

KAREN S REVEY 1-00217860 \$86.14 "LOTS 19, 20 & W5' LOT 21 Subd-GARNETT Blk-63" Sec-30 Twp-20 Rng-20

DANNY W RHODES 1-06100320 Acres-4.00 \$14.96 "BEG 544.5'W NECOR NW4, W910' TO CRK, ELY ALG CRK TO POB" Sec-07 Twp-21 Rng-18

JESSIE R RIGGS 1-02605510 \$141.71 "ROBERT P RIGGS LTS 6,7 & E2 ADJ VAC ALY EX RR RW" Subd-HARRIS Blk-20 Sec-08 Twp-20 Rng-18

EUNICE M ROARK 1-00600160 \$4.73 %

DALE OTT Subd-LONE ELM Blk-2 Lot-11 & 12 Sec-05 Twp-23 Rng-20

SHAYLIN D ROBB 1-00102460 \$47.34 Subd-PINEGAR'S 1ST ADD TO COLO Blk- 4 Lot-1 Sec-07 Twp-23 Rng-19

JEFFREY S & LISA L ROBERTS 1-00101770 "S1,105.14" "Subd-COLONY Blk- 63 Lot-S96LTS 4,5,6 Sec-06 Twp-23 Rng-19"

LEE ROBERTS 1-00203891 \$ 67.18 "Subd-BRONSTON HEIGHTS Blk-4 Lot-8,9 & E5'LT10" Sec-25 Twp-20 Rng-19

NATHANIEL ROBINSON 1-00215530 \$505.36 JESUS ROBINSON Subd-CHAPMANS ADD TO GARNETT Blk- 4 Lot-1 & E24LT 2 Sec-30 Twp-20 Rng-20

LYLE E & HELEN L ROCKERS TTEES 1-00210650 "S3,053.62" % GALEN & MELLISA WILSON Subd-BUDD ADD Blk- 2 Lot-9-13 Sec-30 Twp-20 Rng-20

G M ROCKERS 1-00216210 \$291.88 "LTS 9,10 & VAC ALY BET LTS 8,9" Subd-CHAPMANS ADD TO GARNETT Blk- 14 Sec-30 Twp-20 Rng-20

RUSSELL L & ELEANOR ROSS 1-00600200 \$5.81 % CAROL M HUNSPERGER Subd-LONE ELM Blk-7 Lot-1 & 2 Sec-05 Twp-23 Rng-20

HAZEL C RYAN 1-04000980 Acres-38.70 \$224.74 LARRY H RYAN NW4 NE4 EX RD Sec-29 Twp-20 Rng-21

CYNTHIA L SABISTON 1-01100350 Acres-1.20 "S1,946.00" BEG 245'E SECOR SW4 SE4, N268', E235', S268', W235' TO POB EX RD" Sec-22 Twp-19 Rng-21

RICKEY D SALLEE 1-00209200 \$20.62 MARY M LONGEROT Subd-GARNETT Blk-21 Lot-E2 LT 16 Sec-30 Twp-20 Rng-20

TAMERA R SANCHEZ 1-00101440 \$369.72 Subd-COLONY Blk- 50 Lot-1 Sec-06 Twp-23 Rng-19

SCHECKEL MANAGEMENT LP 1-02101370 Acres-5.00 "S3,329.62" BEG 1440'W NE COR NE4, S501', W243', NWLY252', N379', E462', TO POB EX RD Sec-20 Twp-19 Rng-19

GERALD W & LESLIE SCHECKEL 1-02000070 Acres-4.50 "S2,119.52" BEG 1573'W NECOR NW4, S330', W660', N330', E660' TO POB" Sec-21 Twp-19 Rng-19

MARCUS E SCHMUCKER 1-03102100 Acres-158.00 "S2,410.52" % LEANDER E SCHMUCKER NW4 EX RD Sec-28 Twp-20 Rng-19

JOHN & ROBIN SCHREINER 1-00500780 \$539.14 Subd-KINCAID Blk- 17 Lot-5 TO 8 INCL Sec-36 Twp-22 Rng-20

DANIEL D SCHULTE 1-00210160 "S1,044.89" LT 4 & E36S2 LT 3 Subd-BRYSON ADD TO GARNETT Blk-4 Sec-30 Twp-20 Rng-20

SCOTT D SCHULTE 1-00207160 "S2,898.08" "C D & JANE SCHULTE LOTS 9, 10 & W10' LOT 8" Subd-PARKVIEW ADD TO GARNETT Blk-6 Sec-30 Twp-20 Rng-20

MICHAEL L & CRYSTAL M SCHWEIZER 1-00701310 \$845.60 Subd-MERRILL'S ADD TO WESTPHAL Blk- 15 Lot-19 TO 22 INCL Sec-36 Twp-21 Rng-17

RICHARD E & DIXIE L SCOBEE 1-08000360 Acres-12 Lot-3 & 4 Sec-35 Twp-21 Rng-19

RICHARD E & DIXIE L SCOBEE 1-08000370 Acres-30 \$67.58 Subd-RAILROAD ADD TO WELDA Blk-12 Lot-5 & 6 Sec-35 Twp-21 Rng-19

BARBARA SEELEY 1-05200100 Acres-24.40 "S1,597.84" SW4 SW4 LY W RR EX RD Sec-06 Twp-21 Rng-20

DOUGLAS J SETTER 1-01100610A Acres-215.30 "S5,206.06" NW4 LYG E HWY 169 & W2 NE4 EX BEG 597.3' "S OF NECOR E2 NE4, S609.9', W428.5", "N609.9', E428.5' TO POB & BEG NECOR W2" "SE4, S662', W664.2', N662', E664.2' TO POB & Sec-29 Twp-19 Rng-21"

JUSTIN SHAFER 1-00213570 "S1,144.70" Subd-GARNETT Blk- 48 Lot-13 & W15LT14 Sec-30 Twp-20 Rng-20

KELLEY SHEFFIELD 1-00208970 \$737.32 Subd-GARNETT Blk- 22 Lot-1 & E10LT 2 Sec-30 Twp-20 Rng-20

GARY R & CARRIE S SHEPARD 1-00301280 \$796.86 % GARY R SHEPARD N50LTS 1-3 & N50'OF E19LT 4 Subd-GREELEY Blk- 62 Sec-30 Twp-19 Rng-21

DAVID I SHORT 1-00201670A \$403.56 "BEVERLY J WEST COM AT A PT 1772'W & 60'N SE COR NE4, TH "W108', N177.5', E108', S177.5' TO POB Sec-25 Twp-20 Rng-19"

SIDELINE PROPERTIES LLC 1-00206150 Acres-90 \$900.62 Subd-EASTGATE ADD TO GARNETT Blk- 1 Lot-S188' LT-7 Sec-29 Twp-20 Rng-20

PHYLLIS K SIZELOVE 1-00500990 \$673.42 % DARRIN DAUGHNEY Subd-KINCAID Blk- 27 Lot-4-6 Sec-36 Twp-22 Rng-20

CHANCE SLAUGHTER 1-00501780 \$326.16 MEGAN BARTON Subd-SOUTH ADD TO KINCAID Blk- 6 Lot-11 & 12 Sec-01 Twp-23 Rng-20

DONALD D & LINDA LOU SMITH 1-07201070 Acres-158.60 "S1,062.26" SE4 EX RD Sec-18 Twp-22 Rng







THE ANDERSON COUNTY REVIEW 8-13-2019 / SUBMITTED

Pictured, from left: Mike Norman, Stephen Bradly, Jonathan Hall, Sara Stoltzfus, Sam Stoltzfus, Reuben Esh, Travis Wilson, Sandra Zook, Kris Hix, and Matt Borkholder.

## GACC holds ribbon cutting ceremony for Dutch Country Café

The Garnett Area Chamber of Commerce held a Ribbon Cutting Ceremony at Dutch Country Café on Tuesday, August 6th. They would like to thank everyone who participated in the celebration! Representatives from the Chamber included Ambassadors, Board Members, and business members, as well as staff from City Hall, and the local community. Delicious baked goods and drinks were provided by Dutch Country Café. The Dutch Country Café owners and staff would like to thank everyone who came to celebrate with them at the Ribbon Cutting Ceremony. They appreciate the support of the Garnett community as their business continues to grow.

## Kansas wheat farmer testifies on importance of Grain Inspection System for U.S. export markets

MANHATTAN, Kan. - A Kansas wheat farmer testified in front of the U.S. Senate Committee on Agriculture, Nutrition and Forestry on "Perspectives on Reauthorization of the U.S. Grain Standards Act" on Wednesday, July 31, 2019.

Brian Linin, a farmer from Goodland and member of the Kansas Association of Wheat Growers, provided testimony about the importance of the Federal Grain Inspection Service on behalf of wheat farmers.

"The farmer works to provide the highest quality product that feeds the world. FGIS helps ensure that our customers are receiving the exact specifications that they need," said Linin. "We've provided a lot of information on milling quality, the inspection services and our production processes to our buyers giving them more confidence in our high quality product that other countries can't always ensure."

The U.S.'s grain inspection system, authorized through the Grain Standards Act, provides certainty to our foreign customers that all U.S. grains and oilseeds have been inspected and certified by an independent agency. This service is a great, unique value to U.S. commodities and is an important enhancement for our products on the competitive world market.

"As a grower of winter wheat, among other crops, I wanted to be with you here to serve as a voice for fellow wheat farmers across the country about the importance of maintaining a smooth export system," said Linin. "It's been a very difficult few years for farmers. Having a functioning and respected grain inspection system has enabled the U.S. to be a reliable exporter and facilitate continued demand for our commodities. When we've seen disruptions to our grain inspection system in the past it has resulted in billions of dollars of lost value throughout the production chain."

The Grain Standards Act serves a critical role in exporting grains and oilseeds, including U.S. wheat, of which about 50% is exported each year. U.S. wheat exports increased despite bearish factors such as a strong U.S. dollar, uncertainty about U.S. trade policies, and difficult inland transportation logistics. A properly functioning grain inspection system is critical.

"The grain inspection system is one that is valued by our overseas customers and

adds value to our commodities," Linin reported. "Foreign customers can be assured that an independent agency has certified shipments to meet the grade requirements specified in a contract. This certainty and reliability has helped wheat and other U.S. commodities to grow our export markets and serves as a significant advantage of purchasing U.S. wheat versus wheat from other origins."

Other testimonies for the committee were provided by Tom Dahl, president of the American Association of Grain Inspection and Weighing Agencies, Bruce Sutherland, member of the board of directors for the National Grain and Feed Association and Nick Friant, chairman of the Grades & Inspections Committee North American Export Grain Association.

By Jordan Hildebrand



Pictured is the Dutch Country Cafe staff. Front row, from left: Nick Stoltzfus, Pam Hardwick, Susan Miller, Ruby Schmucker, Nicki Miller, Mary Nisley, Jamie Hatch, Lena Borkholder, Amber Miller, Jenny Miller, Amber Esh, Maria Filbrun. Back row, from left: Travis Johnson, John Cox, Sam Stoltzfus, Sarah Yoder.

## Kansas Lottery revenues nearly \$174 million in 2019

TOPEKA, KAN. - The Kansas Lottery is pleased to announce it transferred more revenue to the State of Kansas in Fiscal Year 2019 than in Fiscal Year 2018.

The combined transfer from the traditional lottery and state-owned and operated casino gaming revenue totaled \$173.6 million.

The total revenue transferred to the State through traditional lottery game sales was \$74.9 million. Revenue transferred from state-owned and operated casino gaming totaled \$98.7 million. Kansas Lottery retailers saw record commissions in FY19 of \$17.3 million.

Traditional lottery sales in Fiscal Year 2019 were \$295.3 million. Lottery sales were 9.79 percent higher than in FY18 when sales were \$268.9 million.

"It's the Kansas Lottery's mission to engage our players in a fun and secure way while

also doing our best to try and maximize a return to the State," said Kansas Lottery Executive Director Stephen Durrell. "We do that by looking at ways to keep our players interested and excited about our games. The Lottery is continuing to add new games and second-chance promotions that offer unique experiences, and we thank all of our players and retailers for their continued support."

A portion of proceeds from traditional lottery sales was dedicated to paying for the 272 Lottery vending machines being rolled out to select retailers across the state. The Kansas Lottery avoided interest and financing costs by paying for the vending machines from operating funds.

"Our vending machine rollout has been methodical as we try to look for the best retailers to maximize the effectiveness of the machines," Durrell

said. "We look forward to the opportunity for increasing our sales and transfer to the state through vending machine sales. Vending machines offer easier access for our players to find their favorite games and takes the burden off our retailers during times of high retail sales."

The Kansas Lottery also transferred a combined \$8.3 million to the Problem Gambling and Addictions Grant Fund. The transfer included \$80,000 from traditional lottery games and \$8.22 million from state-owned and operated casino gaming, as required by state law.

"The Kansas Lottery values its relationship with the four managers the State contracted with to manage these casinos," Durrell continued. "The casinos generate millions of dollars for the state and helps the Lottery accomplish its mission by maximizing the State's revenue."

### New Indoor Range NOW OPEN

*Ladies Day  
Every Tuesday!*

ALL Makes of Guns  
Archery - Ammo  
CCH Classes

**THE GUN GUYS**  
785-418-0711  
412 S. Main St., Ottawa  
Mon-Fri 10-8 • Sat 10-6 • Sun 12-6  
thegunguys@yahoo.com

Find us on:  
**facebook.**

## Yoders to celebrate 50th

A Fiftieth Anniversary Open House will be held for Harley & Ruth Ann Yoder of Garnett on Sunday, August 18. The celebration will take place from 2:30-5 p.m. at the Brethren Church, Mont Ida.

Harley & Ruth Ann were married on August 7, 1969.

Everyone is invited. If you are unable to attend and wish to send a greeting, their address is 19536 NW 1700 Rd, Garnett, KS 66032.

# When dad needs a new heart, Eastern Kansas calls Saint Luke's

When it comes to heart transplants—one of the most critical operations imaginable—Eastern Kansas overwhelmingly chooses Saint Luke's.

Ranked in the top 15 in the U.S., Saint Luke's has one of the most sophisticated and well-established heart transplant programs in the nation.

► Learn how we can help your heart  
[saintlukeskc.org/heart-transplant](http://saintlukeskc.org/heart-transplant)



**Saint Luke's**  
MID AMERICA HEART INSTITUTE

