



Probitas,
virtus, integritas
in summa.

— ONE U.S. DOLLAR —
November 8, 2016
SINCE 1865 • 151st Year, No. 14

Bush City, Colony, Garnett, Greeley, Harris, Kincaid, Lone Elm, Mont Ida, Scipio, Selma, Welda, Westphalia — KANSAS
Contents © Copyright 2016 Garnett Publishing, Inc.

www.garnett-ks.com | (785) 448-3121 | review@garnett-ks.com

**Happy 241st
Birthday
USMC**



**Colony church
takes hayrack ride.**
See page 6B.



**Area veterans take
Honor Flight.**
See page 1B.



E-statements & Internet Banking



GSSB

Member FDIC Since 1899

(785) 448-3111

It's Election Day! Don't forget to vote

(unless you already did)

**More than 600 votes
cast ahead of Election
Day; polls close at 7pm**

BY VICKIE MOSS THE ANDERSON COUNTY REVIEW

GARNETT - More than 600 Anderson County voters have already cast a ballot in advance of today's election.

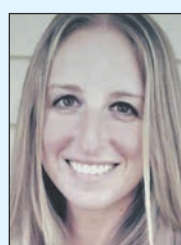
Advance voting for today's election ended Monday, and since Oct. 19 the opportunity to beat the election day rush at the polls brought an extremely high number of voters. Anderson County Clerk Phyllis Gettler said she didn't have numbers to compare the pace

of advance voting to previous elections, but it appeared to be significantly higher this year. She estimated about 400 people voted in advance at her office, and another 282 ballots were mailed to those who requested them. She estimated about five or six people per day voted at the courthouse since advance voting began Oct. 19. "It's been very busy," she said. Statewide as of Friday, the



Gettler

Kansas Secretary of State's office said some 100,000 more Kansans had cast ballots in advance than in the election of 2012.



Heck

For those who haven't already voted, polls opened at 7 a.m. this morning and will remain open until 7 p.m. tonight. Turnout is expected to be high, boosted mostly by a hotly contested presidential election between Democrat Hillary Clinton and Republican

Donald Trump.

There are few local races to spur voters to the polls, with just two actual contests. They include the county clerk's position, where Gettler, the incumbent and a Democrat, will face challenger Julie Heck, a Republican who works for the Franklin County Clerk's Office. The other contested race is at the City of Garnett, where incumbent and current mayor Greg



Gwin



Scott



Wilson

Gwin will try to hold off challenges from three people: Paula Scott, Travis Wilson and Chris Kanawyer.

For those voting today, Gettler reminds voters they must bring an official identification like a driver's license. If you have moved since the

last election but didn't change your voter registration, you'll be given a provisional ballot. Gettler said provisional ballots will be considered, so don't let that stop you from voting.

Polling places in Anderson County rarely require voters to wait for a long period of time, but Gettler encourages people to arrive early if possible. Voters who are in line before 7 p.m. will be allowed to vote.

The busiest polling place in the county tends to be at the Anderson County Community Building at Lake Garnett Park. The station serves City of Garnett Precincts 1 and 2.

SEE VOTE ON PAGE 4A

'Champion of Garnett' Bill Craig dies at age 81

**Craig called football
games for Bulldogs;
worked for local bank**

BY VICKIE MOSS THE ANDERSON COUNTY REVIEW

GARNETT - Bill Craig was "The Champion of Garnett."

That's how Loran Wilson, president of Goppert State Service Bank (GSSB), described Craig, who died at his home after lingering health problems Saturday, Nov. 5, at the age of 81.

"That's how he would want to be remembered. And he absolutely was. He always had Garnett's best interests at heart," Wilson said. "I've never met anyone in my life who was more pro-Garnett."

Indeed, a list of Craig's accomplishments reads like a list of Anderson County's most well-known events and organizations. He was a member of the Garnett Lions Club, the Garnett Jaycees, and the Garnett Racing Association. He served on the board as treasurer of the Garnett Area Chamber of Commerce for years. He also

served a term on the Anderson County Commission, the USD 365 Board of Education, Anderson County Economic Development, the Anderson County Hospital Foundation and the Board of Community Corrections.

Then there's his connection to sports and music. He was "The Voice of the Bulldogs" for decades, calling football games for Garnett High School and later for the Anderson County High School Bulldogs, for 50 years. With a powerful high baritone, he sang in his high school and church choirs and sang for family and friends at weddings and funerals as well as at the local Memorial Day commemorations.

Craig joined GSSB in 1963 as a loan officer and retired as senior vice president Dec. 31, 1998. Wilson started work



Craig

SEE CRAIG ON PAGE 3B

Memorial to honor former Bulldogs coach

**Coach stayed friends
with former players for
most of their lives**

BY VICKIE MOSS THE ANDERSON COUNTY REVIEW

GARNETT - Family and friends are asking for memorials to USD 365 in honor of a man who led Garnett High School through some of its most successful football seasons.

"Coach" Larry Hauser died Sept. 30 in Dallas after a 21-month battle with lymphoma. In his honor, family and friends are asking for donations to the USD 365 Endowment Association, in hopes that his legacy will benefit future generations of Anderson County students.

"He took his teaching very serious, and he took his coach-

ing very serious," Charlie Hughes, a former student and long-time friend, said. "I think it kind of goes hand-in-hand. Coaches are teachers, and teachers have to coach you along."

Hauser began his teaching career in Garnett in 1965.

Hughes actually was the first person to welcome him to Garnett, albeit by a twist of fate. Hauser couldn't find the high school, so he stopped at a driveway on Kaw Avenue and asked the first person he saw for directions. That was a



Hauser

SEE HAUSER ON PAGE 2B

Veterans Day events planned

**Area schools, VFW will be
sites for events to recognize
Anderson County veterans**

BY VICKIE MOSS THE ANDERSON COUNTY REVIEW

GARNETT - Veterans will be honored across the local area, state and nation on Friday, Nov. 11.

Several events are planned this week in honor of Veterans Day. They include:

Wednesday, Nov. 9

• Flag Retirement Ceremony.

The Frontier Extension District 4-H, which includes Anderson County, is planning a flag retirement ceremony at 6 p.m. Wednesday, Nov. 9, at the Pomona Lake OU Lodge. A light meal will be provided. The event is open to anyone who would like to attend. The group also is accepting flags that need to be retired, such as torn or old, worn out flags.

Please RSVP by calling the Extension

office, (785) 448-6826.

Friday, Nov. 11

• Garnett Veterans Day Ceremony

The Garnett VFW Post No. 6397 will have its annual Veterans Day program at Anderson County Jr./Sr. High School, 110 W. Highway 31, Garnett. The ceremony begins at 10:30 a.m.

Brig. Gen. Jay Selanders, commander of the Kansas Air National Guard, will be the guest speaker.

SEE EVENTS ON PAGE 3A

World War I veteran remembered in tribute

**Historical account of
World War I veteran's
sacrifice in France**

As Anderson County's citizens gather Friday morning to honor the sacrifices and heroics of its military veterans, event organizers will ask veterans of past wars and conflicts to stand and be recognized. No World War I veterans remain, and only a handful of veterans who served during World War II likely will be able to attend.

According to US Department of Veterans Affairs statistics, only 620,000 of the 16 million Americans who served in World War II were alive in 2016. The last living World War I veteran in the United States died in 2011, and the last WWI veteran in the world, a British citizen, died in 2012.

Even though those veterans are gone, they live on in stories shared and passed

down by family members and others, those who are determined to pay tribute to the legacy of a destructive war and those who fought for freedom.

Lt. Col. John Marcus Craig was one of those veterans, a local farm boy who served with his brothers in two wars. He gave his life while fighting in France during one of the bloodiest battles of WWI, reportedly still clutching his sidearm and taking more than a dozen bullet wounds, according to newspaper reports at the time.

Family members in the area include his great-nephew Les Thomas of Garnett. This story was submitted by Chelsey D'Albini.

"When November rolls around every year we reach out to our Veterans and remember a day that when the story began symbolized a fragile peace between once great nations. Armistice



Lt. Col. John Marcus Craig

SEE HISTORY ON PAGE 6A

Property owners receive annual tax notices

**About half of properties
decreased in value; tax
rates up roughly 4 mills**

BY VICKIE MOSS THE ANDERSON COUNTY REVIEW

GARNETT - By now, most Anderson County property owners have received their annual property tax notices, telling them just how much property tax money they'll have to pay starting with first-

half payments Dec. 20.

For about half of them, the notices may have brought good news in the form of slightly lower or about the same amount of taxes owed as last year. But for the rest, their taxes likely went up.

The notices were mailed by the Anderson County Treasurer's Office Nov. 1. The second half is due May 10, 2017.

The amount of taxes owed represent a couple of factors. The first is the tax rate, or

mill levy, as assessed by governmental taxing entities like the county, city, school district and others. The other factor is the value assessed to the property as determined by market analysis and state law.

Those two numbers affect property owners' eventual taxes, along with local government leaders' proclivity for spending or not spending money.

The market analysis released by Anderson County

Appraiser Steve Markham shows a fairly stable real estate market in Anderson County. About 41 percent of property owners saw a slight increase in their values, typically less than 2 percent for residential property owners or less than 3 percent for commercial properties. But nearly half, or 49 percent, saw a decreased valuation, by about 2 percent lower for residential property owners and about 2.5 percent for com-

SEE TAXES ON PAGE 2A



NEWS IN BRIEF

VFW BREAKFAST

The Garnett VFW will have breakfast from 7 a.m. to 9 a.m. Saturday, Nov. 12. Garnett VFW Post 6397. Menu includes biscuits and gravy, Belgian waffles, bacon, sausage and eggs.

COURTHOUSE HOLIDAY

The Anderson County Courthouse will be closed Friday, Nov. 11, in observance of Veterans Day.

FOOD DISTRIBUTION

The Emergency Food Assistance Program Distribution will be 4 p.m. Monday, Nov. 21, at the Anderson County Fairgrounds at the Quonset Hut Building.

VETERANS DAY

Garnett VFW Post 6397 will have a Veterans Day dinner from 5 to 7 p.m. Friday, Nov. 11, at the post. It is the VFW Auxiliary's annual fundraiser. Cost is a \$7 donation. Menu is ham and beans with cornbread, chicken noodle soup and vegetable soup.

BIRTHDAY DINNER

The Garnett Senior Center will have a birthday dinner for anyone 60 and older on Nov. 16. Entertainment is Chuck Cowan singing karaoke with the "IN2L." Music begins at 11 a.m. with lunch at noon. Make lunch reservations the day before by calling (785) 448-6996. There is a \$3 donation for the meal.

TURKEY GIVEAWAY

The Garnett Church of the Nazarene, 258 Park Road, Garnett, will have a free turkey giveaway at 7 p.m. Nov. 16. Call (785) 448-3208 to register. You and your family must be present and attend a short presentation before the turkeys are distributed.

BRITTON SCHOLARSHIP

Applications are now available for the Ed Britton Memorial Optimist Scholarship. The \$500 scholarship is awarded annually to an upper level college student. The requirements for applicants include the following: 1) be a graduate from high school in USD 365; 2) have completed at least 60 semester hours of work in a recognized four-year university and/or junior college; 3) be carrying at least 12 hours per semester during the scholarship year; and 4) have a minimum grade point average of 2.5 during the most recent thirty hours of study. Application forms may be picked up at area banks. The due date for applications is Nov. 15, 2016. Anyone having questions concerning the scholarship should contact Kenny Kellstadt at 448-3115 or Stacey Hedges at 448-6155.

ANDERSON COUNTY BOARD OF COMMISSIONERS OCT. 24

Chairman Jerry Howarter called the meeting of the Anderson County Commission to order at 9:00 AM on October 24, 2016 at the County Commission Room. Attendance: Jerry Howarter, Present; Eugene Highberger, Present; Leslie McGhee, Present. The pledge of allegiance was recited. Minutes of the previous meeting were approved as presented.

Road and Bridge

Lester Welsh, Road Supervisor met with the commission. Lester showed the commission pictures of the repaired Wagon Wheel Bridge at Greeley. One side was damaged by a vehicle and their insurance paid to repair it. Leon Lickteig, Artistic concrete repaired the bridge and also fixed cracks on the other side to make it look the same. Commissioner Highberger moved to pay an additional \$962.00 for the additional repair. Commissioner McGhee seconded. Approved 3-0. Dan Harden, BG Consultants met with the commission. He explained to the commission how bridges are rated for weight loads.

Zoning

Michelle Miller, Deputy Zoning Director met with the commission. Commissioner Highberger moved to approve Resolution 2016,1024:1 for Special Use Permit SUP#2016-03 (Yutzy) to construct a building for office and warehouse storage for a construction business in an A-2 transitional agriculture district. Commissioner McGhee seconded. Approved 3-0.

Courthouse HVAC

Ben Trout, EPM met with the commission. He works for a company that manufactures computerized HVAC systems. He informed the commission what his company could do. Commission would like him to talk to the sheriff about the bills at the jail.

Meeting adjourned at 12:00 PM due to no further business.

LAND TRANSFERS

October 25, Cheryl L. Haney And Robert J. Haney To Carolyn L. Gilbreth And Harold L. Gilbreth Sr. That Part Of The South Half of the Northeast Quarter of Section 3-22-19, Lying North Of Hwy 169 And West Of Railroad Right Of Way, Except And Reserving The Oil, Gas And Minerals Underlying Said Land.

October 25, Carolyn L. Gilbreth And Harold L. Gilbreth Sr. To Carolyn L. Gilbreth, Harold L. Gilbreth Sr., And Harold L. Gilbreth Jr. That Part Of The Southeast Half of the Northeast Quarter of Section 3-22-19, Lying North Of Hwy 169 And West Of Railroad Right Of Way, Except And Reserving The Oil, Gas And Minerals Underlying Said Land.

October 28, Roger F. Downey And Robin M. Downey To Michael

Adams And Kristen Adams Beginning At The Southeast Corner of the Southeast Quarter of Section 8-22-21, Thence Northwest For A Distance Of 1494.72 Feet Along South Line Of Quarter Section To Point 1145.53 Feet East Of Southwest Corner Of Southeast Quarter; Thence Northeast For A Distance Of 836.68 Feet To A Point On South Line Of Mkt Railroad Right Of Way; Thence Northeast For A Distance Of 1839.11 Feet Along Right of Way To A Point On East Line Of Southeast Quarter, Point Being 745.90 Feet South Of The Northeast Corner Of Quarter Section, Thence Southwest For A Distance Of 1903.82 Feet Along East Line To True Point of Beginning.

October 31, Brant T. Mcghee And Danelle N. Mcghee To Brant T. Mcghee And Danelle N. Mcghee The North Half of the Northeast Quarter of The Southeast Quarter of Section 14-23-18.

November 1, Jeremy D. Mcadam And Kimberly Mcadam To Carl W. E. Stone And Eva L. Stone The South 15 Feet Of Lots 104 And 105, All Lots 106, 107, 108, 109, 110 And 111 And The North Half Of Lots 112 And 113 In Block 20 Together With Vacated Alley And Street In What Was Formerly Orchard Park Addition To City Of Garnett, Being Located In The Northeast Quarter of Section 25-20-19.

November 1, Leland Jason Beckmon And Nicky Beckmon To Arlan Newby The East Half Of The Northwest Quarter of Section 16-23-20 And The West Half of the Northwest Quarter of Section 16-23-20 Less Beginning At Point On North Line Of Section 16, Being Southeast 874.17 Feet From The Northwest Corner Of The Northwest Quarter; Thence Southeast 312.62 Feet; Thence Southwest 541.31 Feet; Thence Northwest 213.00 Feet; Thence Northeast 243.86 Feet; Thence Northwest 105.60 Feet; Thence Northeast 262.42 Feet To North Line Of The Northwest Quarter and Point of Beginning.

DOMESTIC CASES RESOLVED

Rae J. Newland vs. Stephen J. Newland, decree of divorce.

MARRIAGE LICENSES

November 2, Micah James Garcia and Cara Alisha Archer

CIVIL CASES FILED

October 28, Midland Funding LLC., assignee of Synchrony Bank vs. Cindy K. Tinsley, asking \$1,120.38 plus interests and costs.

November 1, Bridgette Anderson, on behalf of heir-in-law Connie Fauzae, Esperanza Lara, and Jose Lara, wrongful death, asking \$50,000 plus costs.

LIMITED ACTION FILED

Ransom Memorial Hospital vs. Holly A. Byerly, asking \$2,969.61 plus costs and interest. Hearing set for December 6.

CRIMINAL CASES FILED

LVNV Funding LLC., vs. Willard Rhodes, order of dismissal; not served.

LVNV Funding LLC., vs. Jodi Alley, Defendant failed to appear, default judgment for \$771.85 plus interest and costs,

Capital One Bank (USA), N.A. vs. Richard V. Falbo, defendant failed to appear, default judgment for \$3,017.70 plus interest and costs.

Capital One Bank (USA), N.A. vs. Victoria Faulkner, defendant failed to appear, default judgment for \$4,144.10 plus interest and costs.

Capital One Bank (USA), N.A. vs. Victoria Faulkner, defendant failed to appear, default judgment for \$5,190.67 plus interest and costs.

CRIMINAL CASES FILED

November 2, Dale Alan Freeman, Possession of Methamphetamine, criminal restraint, and domestic battery, Hearing set for November 8.

CRIMINAL CASES RESOLVED

Speeding violations: Yanet Adame-Najera, 78 mph in a 65 mph zone, guilty plea, \$171 fine.

Maxwell Michael Brammer, 74 mph in a 65 mph zone, guilty plea, \$153 fine.

Leslie B. Burney, 78 mph in a 65 mph zone, deferred adjudication by way of diversion, \$63 fine.

Hailey Elizabeth Cope, 79 mph in a 60 mph zone, guilty plea, \$207 fine.

Maxine Ensley, 64 mph in a 55 mph zone, guilty plea, \$153 fine.

Raymond Mader, 64 mph in a 55 mph zone, guilty plea, \$153 fine.

Jessica DeAnne Slocum, 64 mph in a 55 mph zone, guilty plea, \$153 fine.

Andrew W. South, 84 mph in a 65 mph zone, guilty plea, \$207 fine.

Other:

Yanet Adame-Najera, Operate a motor vehicle without a license, guilty plea, \$60 fine.

State of Kansas vs. Travis Wayne Leftwich, criminal damage to property, dismissed, domestic battery, guilty plea, \$553 fine, confinement.

Cory Wayne Denny, theft of property or services, guilty plea, \$343 fine.

Jason Charles Smith, theft of property or services, guilty plea, \$343 fine.

Leslie B. Burney, driving while suspended, first conviction, deferred adjudication by way of diversion, \$393 fine, vehicles; unlawful acts; e.g. registration,

deferred adjudication by way of diversion, no fine listed.

Charles A. R. Burris, failure to stop at accident; first offense, guilty plea, \$208 fine.

Jeremy Ryan Kettler, vehicles; unlawful acts; e.g. registration, guilty plea, \$168 fine.

GARNETT MUNICIPAL COURT CASES RESOLVED

Speeding violations:

Andeana Renee Wright, Tulsa, Ok, 43 mph in a 30 mph zone, \$150 fine.

Sarah M. Hulcy, Garnett, 44 mph in 30 mph zone, \$150 fine.

Rachel S. Zamaitis, Ottawa, 44 mph in a 30 mph zone, \$150 fine.

Tina M. Wolken, Garnett, 47 mph in a 30 mph zone, \$180 fine.

Mark A. Foltz, Garnett, 47 mph in a 30 mph zone, \$180 fine.

Justin L. Krohn, Pacific City, OR, 42 mph in a 30 mph zone, \$150 fine.

Chelsea R. McIntosh, Kansas City, 42 mph in a 30 mph zone, \$150 fine.

Lannie R. Most, Gardner, 39 mph in a 30 mph zone, \$125 fine.

John R. Thomas, Garnett, 42 mph in a 30 mph zone, \$150 fine.

Seat belt violations:

Austin James Dean Akes, Parker, No seat belt, 14-17 year old, \$60 fine.

Other:

Brandi Jean Edstedt, Ottawa, disorderly conduct, \$150 fine, 30 days jail suspended.

Michael J. Shipp, Minerva, OH, failure to stop at stop sign, \$125 fine, expired tag, \$75 fine.

Randi Michelle Salazar, Garnett, use of wireless communication devices, \$125 fine.

Abby Knesha Leblanc, Garnett, allowing minor to drive, \$175 fine.

Michael P. Watts, Colony, turning move required signals, \$125 fine, no proof of liability insurance, \$300 fine, 30 days jail, suspended, possession of drug paraphernalia, \$100 fine.

David W. McAfee, Garnett, pedestrian under the influence, \$250 fine.

Christina Rosa Finney, Garnett, disorderly conduct, \$50 fine.

Earl Joseph Best, Garnett, failure to stop at stop sign, \$125 fine.

Albert Eugene Thacker, Jr., Garnett, pedestrian under the influence, \$200 fine.

David A. Ball, Welda, pedestrian under the influence, \$200 fine.

Osten Montgomery Odell, Osawatomie, drive on left side of roadway prohibited, \$125 fine.

Michael E. Higgins, Baldwin, expired tag, \$200 fine.

Joshua M. McAuley, Garnett, vehicle on grass in City Park, \$125 fine.

Tyler C. Agler, Emporia, no camping permit, \$75 fine.

Quinten Robert Ward, Lebo, illegal tag, \$200 fine, driver's license in possession, \$100 fine.

GARNETT POLICE REPORT Incidents

On October 29, a report of DUI; first conviction and required obedience to law enforcement officer, near 1850 Road and North 169 Highway.

On October 29, a report of sexual battery in the 300 block of West Fifth Avenue.

On October 30, a report of giving a false alarm; emergency, in the 400 block of West Eighth Street.

ANDERSON COUNTY SHERIFF'S REPORT Incidents

On October 25, a report of interference with law enforcement officer and vehicle; unlawful acts; e.g. registration near 2200 Road and Woodson Road, Greeley.

JAIL BOOKINGS

On October 28, Burnest Herbert Herring, 60, Kincaid, was booked into jail by Anderson County Sheriff on suspicion of probation violation, Non Bondable, to be held on 3 day writ. Released October 31.

On October Weston Daniel Borntrager, 20, Welda, was booked into jail by Anderson County Sheriff on suspicion of Driving under the influence; first conviction, Non Bondable, to be held on 48 hour writ. Released October 30.

On October 29, Lloyd Daywayne Gilley, 51, Kansas City, was booked into jail by Garnett Police on suspicion of Driving under the influence; first conviction, bond set at \$3,000, on suspicion of required obedience to law enforcement officer, no bond set, on suspicion of failure to yield for an emergency vehicle, no bond set, on suspicion of refusal to submit preliminary breath test, no bond, on suspicion of interference with law enforcement officer, no bond set. Released October 30.

On October 29, William Christopher Vandenberg, 21, Lawrence, was booked into jail by Anderson County Sheriff on suspicion of possession opiates, bond set at \$2,500, on suspicion of operating a vehicle without liability insurance, no bond set, on suspicion of operating a motor vehicle without a valid license, no bond set, and on suspicion of vehicle; renewal registration, no bond set. Released October 29.

On October 30, Nancy Kay

SEE RECORDS ON PAGE 3A

TAXES...

FROM PAGE 1A

merical property owners. The remaining 9 percent or so of properties saw no change in value.

Local tax rates are relatively similar to last year's, although Anderson County hiked taxes about 4 mills, mostly because of increases to its general fund for basic county operations like salaries. The two school districts (USD 365 in the northern part of the county and USD 479, the Crest district in the

southern part of the county) both saw a slight tax increase as they adjusted for changes at the state level. The City of Garnett's tax rate is slightly lower, by about half a mill, mostly because the city paid off some of its debt.

Your tax rate will vary depending on where you live and which taxing entities apply, but it appears county property owners as a whole will see an average increase of about 4 mills.



Health Services DIRECTORY

Eye Care



VISION SOURCE
115 N. Maple
Garnett, KS
(785) 448-6879

Pharmacy

Maple & Hwy. 31 MON-FRI 8:30am-7pm
Garnett, KS SAT 8:30am-2pm
Next to Country Mart



We accept all Medicare drug plans.
(785) 448-6122

Chiropractic

Chronic Back or Neck Pain?

Ask how the Triton Decompression-Traction Therapy can help. A non-surgical approach for chronic sufferers.

WILSON CHIROPRACTIC CLINIC
Lynn A. Wilson, D.C., P.A.
Keeping Your Back In Action



Treatment For Your Back & Joint Pain
Sports, Auto, and Work Injury Care

**414 W. First • Garnett
(785) 448-6151**

M-T-W-F SAT 8-10
8-5 After Hours By Appt.

To advertise in this guide, contact Stacey at The Anderson County Review (785) 448-3121 or email review@garnett-ks.com

Rehabilitation

**Short-Term Rehabilitation
Long-Term Care
Respite**

Medicare Part A & B, Medicaid and Private Insurance Accepted



Richmond Healthcare and Rehabilitation Center

340 E. South Street
Richmond, Kansas 66080
(785) 835-6135
www.skilledhealthcare.com/richmondhealth

Notice of Public Hearing

Great Plains Energy Incorporated ("GPE"), Kansas City Power & Light Company ("KCP&L") and Westar Energy, Inc. ("Westar") have filed a joint application with the Kansas Corporation Commission ("the Commission"), seeking approval of the acquisition of Westar by GPE, the parent company of KCP&L, for a total purchase price of \$12.2 billion, including assumed debt. If the application is approved and upon the closing of the transaction, Westar will become a wholly-owned subsidiary of GPE.

If approved, Great Plains Energy will have more than 1.5 million customers in Kansas and Missouri, nearly 13,000 megawatts of generation capacity, almost 10,000 miles of transmission lines and over 51,000 miles of distribution lines. In addition, more than 45 percent of the combined utility's retail customer demand can be met with emission-free energy. Westar and KCP&L have assured the Commission in their joint application that customers will see no change in their day-to-day utility service as a result of the transaction and will continue to receive safe, reliable and efficient service at just and reasonable rates.

The Commission will decide whether or not to approve the acquisition. Approval will depend upon whether the Commission finds the acquisition promotes the public convenience. The Commission will evaluate any possible effects on ratepayers, operational synergies, competition in the market for electricity, labor dislocations, environmental impacts, and any other relevant issues, in making its determination. Westar and KCP&L customers are invited to provide comments regarding these issues.

Public Hearing

The Commission has scheduled a public hearing to provide KCP&L and Westar customers an opportunity to find out more about the proposed acquisition, ask questions and make comments about the proposal. The public hearing is scheduled for:

Monday, December 5, 2016, at 6 p.m. CST
Shawnee Heights High School
4201 SE Shawnee Heights Road
Tecumseh, Kansas 66542

Those unable to attend in person can watch the hearing live from the Commission's website: www.kcc.ks.gov. In the event of technical difficulty or for those unable to watch live, a recording of the hearing will be available on the Commission's website beginning December 12.

Any person requiring special accommodations at the hearing site under The Americans with Disabilities Act needs to provide notice to the Commission at least 10 days prior to the scheduled hearing by calling 1-800-662-0027.

Public Comments

The Commission will accept comments regarding the proposed merger through 5 p.m. Jan. 18, 2017. There are three convenient ways to submit a comment:

1. Go to the KCC website (www.kcc.ks.gov) to enter your comment. Click on the link under Your Opinion Matters.
2. Send a written letter to the Kansas Corporation Commission, Office of Public Affairs and Consumer Protection, 1500 S.W. Arrowhead Road, Topeka, KS 66604-4027. Be sure to reference Docket No. 16-KCPE-593-ACQ.
3. Call the Commission's Public Affairs office at 1-800-662-0027.

An evidentiary hearing on the acquisition application is scheduled to begin on January 30, 2017 at 9 a.m. CST at the Commission's offices 1500 SW Arrowhead, Topeka, Kansas. The Commission must issue a decision in the case by April 24, 2017.

A complete copy of GPE, KCP&L and Westar's application and supporting testimony is available on the Commission's website (www.kcc.ks.gov) by searching docket filings for Docket No. 16-KCPE-593-ACQ. If you need additional information, please contact the Commission's Office of Public Affairs and Consumer Protection at 1-800-662-0027 or public.affairs@kcc.ks.gov.

HAUSER

AUGUST 31, 1943-SEPTEMBER 30, 2016

Larry Jay Hauser passed away Friday, September 30, 2016, at Medical City Dallas Hospital, Dallas, Texas, after a 21-month battle with lymphoma. He will be remembered as a loving husband, father, grandfather (Poppy), brother and friend to all who knew and loved him.

Larry was born in Claremore, Oklahoma, to Jay and Nella Faye (Abbott) Hauser on August 31, 1943. After graduating from Sequoyia High School in 1961, he obtained his Bachelor of Education degree from Northeastern Oklahoma State University in 1965. He received his Master of Natural Sciences from Oklahoma University in 1974.

In 1965, Larry began a teaching career in Garnett, Kansas, teaching mathematics and coaching football, basketball, and track. He was named head football coach in 1969 and compiled winning seasons each of the next 7 years. He was named "Tri-Valley Coach of the Year" twice during his tenure.

Larry began his State Farm career as an agent in Iola, Kansas, in 1978. That was the beginning of a long and successful career with State Farm, which included tenures as Agency Manager in Kansas; Agency Director in Missouri, Oklahoma, and Kansas; Agency Director of Recruiting (Corporate); and Vice President of Agency in the North Texas Region, retiring in 2002.

Larry married Patricia Elgin in 1964. Jennifer, their only child, was born in 1968. In 1994, he married Susan Goff Allen of Liberty, Missouri. Larry is survived by his wife, Susan; his daughter, Jennifer (Brian) Simpson and his cherished granddaughter, Katherine of

Addison, Texas; brothers Tom (Betty) Hauser of Marceline, Missouri, and Terry (Debbie) Shrum of Owasso, Oklahoma.

Larry was a member of the Cherokee Nation through his grandmother, Allie, and his father, Jay. His Cherokee ancestors survived the Trail of Tears, a source of great pride for him. Larry was an avid golfer, who enjoyed collecting golf balls from the more than 350 courses he had played. In addition, he was an avid fan of his beloved Oklahoma Sooners football teams and spent many happy Saturday afternoons at the stadium. Following retirement, Larry and Susan enjoyed traveling, golfing with friends, and entertaining.

Much of Larry's success in teaching and his agency career was his ability to collaborate and develop consensus. Friendship was of utmost importance to Larry and he never left a friend behind. We will miss his loyalty, his kindness, and his wisdom. Larry was a natural leader and a believer in the good of all people. He was a true gentleman and a fun "Poppy" to granddaughter Kate.

A Memorial Service was on Friday, October 21, 2016, in the St. Andrew United Methodist Church Sanctuary, 5801 W. Plano Parkway, Plano, Texas, 75093. In lieu of flowers, the family requests donations to: Seven Loaves of St. Andrew United Methodist Church; Texas Oncology Foundation (please indicate BMT in memory of Larry Hauser), 12221 Merit Drive, Suite 500, Dallas, Texas 75251; or Anderson County USD 365 Endowment Association, P.O. Box 16, Greeley, Kansas 66033.

CRAIG

DECEMBER 3, 1934-NOVEMBER 5, 2016

William Harris "Bill" Craig, age 81, of Garnett, Kansas, passed away on Saturday, November 5, 2016 at his home.

He was born on December 3, 1934, along with his twin brother, Jim, in Garnett, Kansas, the son of Francis Thomas "Hi" and Alvina Dorothy (Feuerborn) Craig. He was a graduate



Craig

of Garnett High School's Class of 1952, and attended Kansas State University, where he played football and developed a lifelong love for the Wildcats. Bill later graduated from Emporia State University. He was a United States Army veteran, having served in special services at Fort Riley, Kansas.

Bill married Barbara Ulsen on October 17, 1959 at Holy Angels Church, Garnett. Bill and Barbara were married for 58 years until his passing. This union was blessed with two children, Todd and Michelle "Mitch".

He worked at the Garnett State Savings Bank, for 35 years, retiring as Vice President. Bill continued to serve on the Bank Board of Directors for many years after his retirement. Bill was very active in community service. He was a member of the Garnett Lions Club, Board of County Commissioners, USD 365 School Board, Anderson County Hospital Foundation, Anderson County Development Commission, Board of Community Corrections, and the Garnett Racing Association.

EVENTS...

FROM PAGE 1A

Later that day, from 5 p.m. to 7 p.m., the Garnett VFW Auxiliary will have a Ham & Bean Soup Supper at the VFW Post in Garnett. Menu includes ham and beans with cornbread, chicken noodle soup or vegetable soup. Donation is \$7 per adult.

• Central Heights Veterans Day Program

The event begins with a free breakfast from 9 a.m. to 10 a.m. in the cafeteria. The program is from 10 a.m. to 11 a.m. in the Ike Cearfoss gymnasium. This year's speaker is Franklin County Sheriff Jeff Richards, a nine-year veteran of the US Air force.

• Crest Veterans Day Program

A Veterans Day Assembly

MONROE

APRIL 25, 1922-OCTOBER 30, 2016

Amy Lelia Huffman Monroe, age 94 of Pulaski and formerly of Kincaid, KS passed away Sunday, October 30, 2016.

Born April 25, 1922 in Kincaid, she was the daughter of the late Simon Perry Huffman and Silva Del Tracy Huffman.

Her husband, Lewis Arden Monroe and 7 brothers and sisters also preceded her in death.

Survivors include her children, Stacey and Norman Crowther of Utah; Cade and Louise Monroe of Utah; Tansy and John Taylor of Idaho; Jordy Eicher of Pennsylvania; Jabe and Valerie; Lerie Monroe

of Virginia; Grabe and Robin Monroe of Virginia; 9 Grandchildren, 7 Great Grandchildren

Memorial services were Saturday, November 5, 2016 at the Bower Funeral Home-Chapel, Pulaski with the Rev. Vickie Houk officiating. Interment will be held on a later date at Fairview Cemetery in Mildred, KS.

To sign the online guestbook, please visit www.bower-funeralhome.com

Bower Funeral Homes - Pulaski is handling the arrangements for the family.

MCGHEE

SEPTEMBER 24, 1937-NOVEMBER 4, 2016

Donald Dean McGhee, 79, of Iola, Kansas, passed away Friday, November 4, 2016, at Allen County Regional Hospital.

Don was born September 24, 1937, in Bloomfield, Iowa, the son of Carl and Wilma (Gilliland) McGhee.



McGhee

The family moved to Colony where he graduated from high school. On July 10, 1955, Don married Patricia I. Crofts at the LeRoy Christian Church. They made their home in Colony, LeRoy, Welda, and Aliceville before moving north of Iola in 1972. Don was a heavy equipment operator and worked on the Melvern Dam and U.S. Highway 69 construction in the Kansas City area among other projects. He later worked as a road grader for Allen County for 14 years before he retired.

He and Pat were members of the Old Time Fiddlers, Pickers & Singers. Don played the steel guitar and Pat sang for years in local bands. He also enjoyed shooting trap.

Survivors include his wife of 61 years, Pat McGhee; 1 son, Gregory Dean McGhee of Ft. Scott, KS; 1 brother, Larry McGhee & wife, Judy of Edwardsville, KS; and many in-laws, nieces and nephews.

He was preceded in death by his parents, his son Ricky Lee McGhee and sisters Carlene and Shirley.

Visitation will be 6:00-8:00 p.m. Tuesday, Nov. 8, 2016, at Feuerborn Family Funeral Service in Iola.

Funeral services will be 10:00 a.m. Wednesday, Nov. 9, 2016, at First Christian Church, 1608 Oregon Road, Iola, with burial to follow in the Logue Cemetery east of LeRoy. Memorials are suggested to the First Christian Church of Iola and may be left with the funeral home. Go to www.feuerbornfuneral.com to leave a condolence online.

Notice to sell Weaver property

(First published in The Anderson County Review Tuesday, October 25, 2016)

Fax: (314) 567-8006
Email: mrupard@km-law.com
Attorney for Plaintiff
oc25t3

IN THE DISTRICT COURT OF ANDERSON COUNTY, KANSAS

U.S. Bank Trust, N.A., as Trustee for LSF9 Master Participation Trust
Plaintiff,
vs.
Jennifer J. Weaver, Mark W. Weaver, et al.,
Defendants.

Case No. 16CV25
K.S.A. 60
Mortgage Foreclosure
(Title to Real Estate Involved)

NOTICE OF SHERIFF'S SALE

Under and by virtue of an Order of Sale issued by the Clerk of the District Court in and for the said County of Anderson, State of Kansas, in a certain cause in said Court Numbered 16CV25, wherein the parties above named were respectively plaintiff and defendant, and to me, the undersigned Sheriff of said County, directed, I will offer for sale at public auction and sell to the highest bidder for cash in hand at 10:00 AM, on 11/16/2016, at the front door of Anderson County Courthouse, the following described real estate located in the County of Anderson, State of Kansas, to wit:

THE FOLLOWING DESCRIBED REAL ESTATE SITUATED IN ANDERSON COUNTY, KANSAS, TO-WIT:

THE EAST 2 FEET OF LOT FIFTEEN (15) AND ALL OF LOT SIXTEEN (16) IN BLOCK THIRTY (30) IN THE CITY OF GARNETT, ANDERSON COUNTY, KANSAS.

EXCEPT AND SUBJECT TO: EASEMENTS AND RESTRICTIONS OF RECORD.

SHERIFF OF ANDERSON COUNTY, KANSAS
Respectfully Submitted,
By: Shawn Scharenborg, KS # 24542
Michael Rupard, KS # 26954
Dustin Stiles, KS # 25152
Kozeny & McCubbin, L.C. (St. Louis Office)
12400 Olive Blvd., Suite 555
St. Louis, MO 63141
Phone: (314) 991-0255

will begin at 9 a.m. at the Crest School in Colony.

In observance of Veterans Day, we will not be open for business Friday, November 11.



Join us in Honoring America's Veterans.

Our military veterans have helped make the United States the greatest nation in the world.

On November 11, Veterans Day, we salute the brave men and women who have served in the Army, Navy, Air Force, Marines and Coast Guard.

We thank them for their patriotism and protection of our country.

Ask About Our 18 Month & 30 Month CD Special.



RECORDS...

FROM PAGE 2A

Proctor, 60, Garnett, was booked into jail by Anderson County Sheriff on suspicion of giving a false alarm; emergency services. No bond set. Released October 31.

On October 31, Leah Ann Donohue, 48, Garnett, was

booked into jail by Garnett Police Department on suspicion of driving under the influence of alcohol or drugs, bond set at \$2,500. Released on own recognizance October 31.

On November 1, Dale Alan Freeman, 30, Paola, was booked into jail by Anderson County

PROFESSIONAL TAX PREPARATION

www.taxtimetaxserviceinc.com



JO WOLKEN

Enrolled Agent
Representing Clients Before:
IRS Exam Division
IRS Collection Division
IRS Appeals Division

- Unfiled Returns
- Offers in Compromise
- Liens & Levies
- Innocent Spouse Relief
- Audit Reconsiderations
- Payroll Tax Problems

TAX-TIME TAX SERVICE, INC.
785-448-3056 • 415 S. Oak, Garnett

TAX DEBTS • TAX PROBLEMS

New Indoor Range NOW OPEN

Ladies Day Every Tuesday!

ALL Makes of Guns Archery • Ammo CCH Classes

THE GUN GUYS
785-418-0711
412 S. Main St., Ottawa
Mon-Fri 10-8 • Sat 10-6 • Sun 12-6
thegunguys@yahoo.com

Garnett V.F.W Auxiliary Ham & Bean Soup Supper

Veterans Day
Fri., Nov. 11
5 p.m. - 7 p.m.

Ham & Beans with Cornbread,
Donation \$7 Adults Chicken Noodle Soup & Vegetable Soup
V.F.W. Post 6397 • Garnett, KS

We will not be open for business Friday, November 11th in honor of Veterans Day.

Farmers State Bank
517 S. Oak Garnett, KS 66032 (785) 448-5451
Pleasanton (913) 352-8437 Blue Mound (913) 756-2221
FDIC

Remember Our Veterans...

Anderson County Portraits of Honor

Only \$39.95

Featuring more than 800 historic photographs of Anderson County's military veterans from every era. Published in celebration of the 150th anniversary of The Anderson County Review in 2015.

Pick up your copy today at our offices at 112 W. 6th in Garnett, or order by phone and we'll ship anywhere in the country for \$5.

(785) 448-3121 • admin@garnett-ks.com

The Anderson County Review

Trump is dead: Long live Trump

By the time most people read this newspaper Tuesday, Hillary Clinton and the Democratic National Committee will have commanded the large electoral vote-rich urban centers of the country and defeated Donald Trump in the race for president.

The caveat that both were the most unpopular candidates ever forwarded by their parties will be an issue of future tense as Clinton pursues her presidency. Clinton underestimated Trump's followers or overestimated herself. Her passionate unpopularity among a smidge less than half the United States and the vehement minority inspired by Trump's bare knuckles attack on the U.S. political establishment was more than she expected. It will have resounding and far reaching national and international impacts in her presidency.

More so than health care and jobs and trade deals which were discussed in the campaign and which few of us really believe will change or improve substantially, the fervor of Trump's supporters and the shift they caused in the Republican Party may take years to resolve. Indeed, the unifying energy of Republicans will come from pursuing the corruption revealed around the Clinton orbit and in stalemating her, as they did Obama, in her quest for growth government.

The irony itself is compelling. Trump was the candidate no one ever seemed to want, but the one for whom, repeatedly, most of the votes were cast. Anderson County Republicans who caucused in March picked Ted Cruz over Trump, echoing the sentiments of Kansas Republicans as a whole who picked Cruz by a vote of 35,000 to 17,000. Democrats in the Sunflower State picked Bernie Sanders 26,000-12,000 over Clinton. Indeed, the Republican vote seemed the only serious one. No Democrat in the country ever doubted Hillary Clinton, as the anointed next in line in a party still run by bosses aloof to Sanders' socialist millennial rabble, would be the nominee.

While castigated by the establishment of this party, Trump rallied millions of forgotten Independents, Libertarians and others dispossessed by years of starched-shirt, melba toast GOP faltering into an anti-Clinton lather - far more so than conventional Republicans did. Trump's new Republicans are more working class; more likely to favor congressional term limits; more likely to have joined the workforce

REVIEW COMMENTARY



DANE HICKS, Publisher

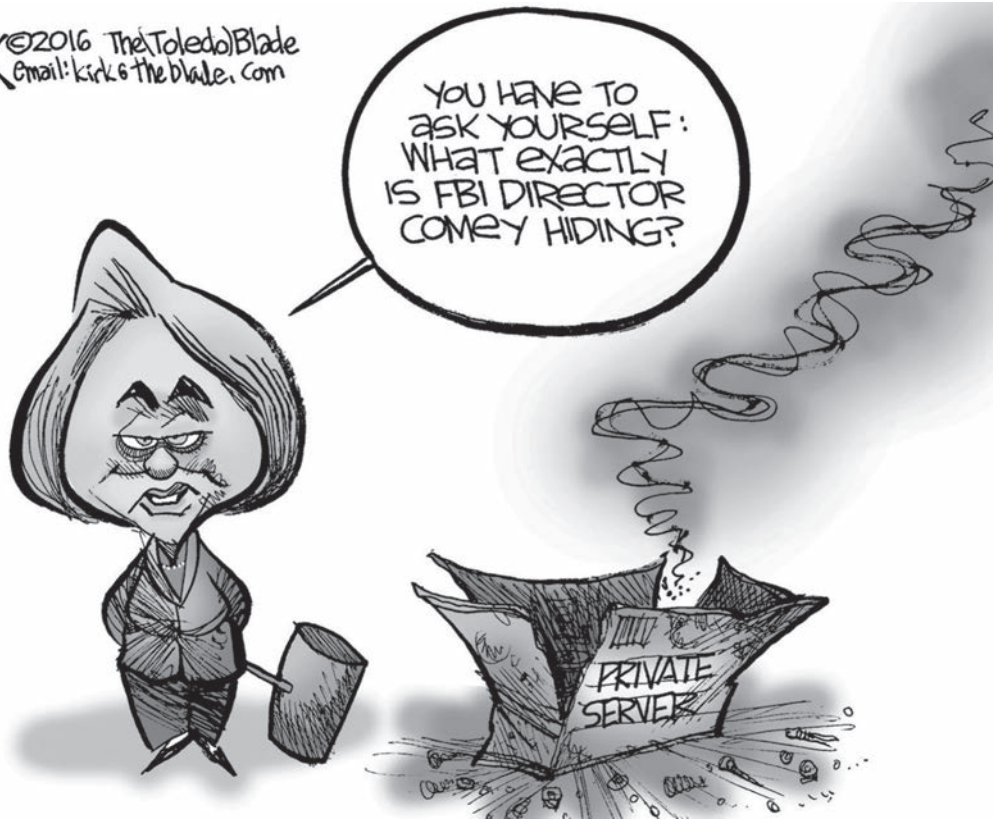
than to have finished college; and if under age 35 are less likely to share the entitled apathy toward politics which defines that age group. They changed the face of the party - whether for better or worse will be determined by party success or failure come midterm elections.

Though they've lost, their eyes have been opened to the dereliction of a Democrat party which nominated a candidate with full knowledge she was under FBI investigation. They watched an investigator outline crimes then refuse to prosecute after a meeting on the tarmac between his boss and the Democrats' patron saint. They've watched DNC operatives explain, live on video, how they cheat elections with voter fraud to win targeted precincts for electoral vote bounty, and how they stage thugs at opponents' events hoping for a televised scuffle. They've witnessed the degradation of a bought-and-paid-for mainstream media steeped in liberal philosophy to the point its own lackeys can cheat to provide advance debate questions to their candidate without repercussion.

While poverty, ethnic makeup and a penchant for the receiving end of collectivism in our urban centers may never allow Republicans to win the electoral college again, Trump's legacy may be the revelation that state congressional races and state legislative races are the high ground to oppose Clinton's bankruptcy-bound, expanding federal government. Inaction in Congress is not a bad thing if it stops the progress of a destructive agenda.

Clinton's failures and criticism will fuel opposition, much like Obama's did. So Republicans must eat their vegetables and rest up. There is much work to be done.

KIRK ©2016 The Toledo Blade Email: kirk@theblade.com



THE ANDERSON COUNTY REVIEW'S

PHONE FORUM

Record your comments on the topic of your choice at (785) 448-2500, press option 1. You do not need to leave your name. Comments will be published anonymously. Calls may be edited for publication or omitted.

There's no such thing as late term abortions. They do not abort babies at 9 months. Whatever they're telling you they're crazy. Look it up, check it out. Do a little fact checking. There is no such thing as late term abortions.

I was misquoted in the Phone Forum last week, I'd like to clarify that. It was, 'whomever wins the election gets to appoint the next judges to the supreme court. If Hillary wins, she will take the guns. She says she won't, but do you believe her?'

To the gutless one calling the Landowners Against Windmills morons, be aware there were over 100 of them at the last planning and zoning meeting with many more that couldn't attend that night but adamantly in support of LAW. They are well educated and yes, perhaps well funded. Their platform is based on sound principles supported by strong morals and values. If you weren't so blinded by your short sightedness, apparent greed and obvious jealousy, you might see that.

It's a little ironic I'm following a police officer in a black pickup. I'm doing 20 mph, we're heading into a school zone and he's leaving me in his dust. He must be doing 30-35 mph. Cops don't have to follow the laws in a school zone?

Hey, I just want to say a big thank you to the county road ditch mowers. Very nice between Garnett and Westphalia being able to see the deer in the ditch. Good job guys.

Hey windmill fan whoever you are, you need to face it. You lost. There was a whole lot of people at that meeting and they all disagreed with you and some of them their land is all they have. You'll have to find some other way to screw your neighbors over and ruin the land values on the whole east side of the county. Maybe you should go into the pig business? Or better yet, maybe your neighbor to the south will. Thank you.

Yes, I just read this week's Phone Forum and I am surprised there are individuals in our community that do not realize that the people who choose to live in the rural areas of the county live there because of the view, because of the tranquility and the peace you get from living in the country. No one wants to ruin their view by obstructing it with windmills. If you would do your research you would find that these windmills take a lot of rights away from the landowner. So do your research and quit blaming everyone else as if it's all about their money. It's not.

As for the people going on about the windmills. Take a trip over to Waverly and see the great view and how pretty they are. Ask the farmers how much money they've really got. Don't forget to ask the people who put them up how much money they got. I think it's all tied up in court because the companies haven't paid them. If you think they're so pretty, why don't you put them up over in Garnett.

Ministerial Alliance needs more funds

Letter to the editor:

Within our community, we have a wonderful group of people that donate their time to an organization that helps out people of our community when needed. The Garnett Area Ministerial Alliance has a mission to assist those within the community with needs such as providing food, gasoline, medicines, and motel expenses for those people who are unable to afford those necessities.

I am writing to ask for your assistance in our drive to replenish the ministerial alliance account. There is a great need for financial support for this program. Due to the serious unemployment and economic conditions of our area, the services provided have been used more now than have been in the past. In addition, the financial contributions that have come in, have declined due to the same situations. This not-for-profit program is funded only by donations from area individuals and businesses, as well as the fifth Sunday singspiration offerings.

I appreciate your time and your consideration with helping the ministerial alliance organization. If you would like to send a monetary donation, you may send it to: Garnett Area Ministerial Alliance, 258 W. Park Road, Garnett, KS 66032. The organization would be grateful for your financial support.

Sincerely,
Stacy Gwin, Treasurer

Ethanol promotion will save you money, support local economy, reduce dependence on foreign oil

I'm excited about the expanded fuel choices at Sandra's Quick Stop. On Thursday, Nov. 10, EKAE is helping with a promotion at Sandra's. The station recently added blender pumps that allow motorists to fill up with higher blends of ethanol. Most people don't realize that their vehicles, model year 2001 or newer, can use E15 fuel, which is 15 percent ethanol. About 85 percent of the cars and pickups on the road today can use E15. Aside from the fact that E15 contains more home-grown renewable ethanol, there are a lot of reasons to try this fuel. The main reason to try E15 is that you are getting a higher octane fuel for a lower cost. How often do you get a higher quality product at a lower price?

You can find other additives for gasoline, like benzene, xylene and toluene. These are dangerous chemicals that carry serious health concerns. Ethanol is simply alcohol, and it's a natural, safe additive. Ethanol is made locally from corn we grow here. Our ethanol plant provides good jobs and economic benefit to our area, not only from salaries, but from the economic activity surrounding the plant benefits our local businesses.

LOCAL COMMENTARY



JEFF OESTMANN, EKAE

Stop by on Thursday from 11 a.m. to 1 p.m., and we'll help you understand the new fuel choices offered at Sandra's. If you have a Flex Fuel Vehicle, you can use the higher blends offered at the station, like E30 or E85. We'll be happy to help you figure out if your vehicle is equipped for these higher blends. This effort is about expanding your fuel choices. If you want regular gas, or premium unleaded, that's your choice and we support it. But we hope you'll try the E15 or higher

blends if you have a flex fuel vehicle.

Reducing our reliance on foreign oil with home-grown fuels like ethanol improves our national security. As a veteran, this is important to me. Friday is Veterans Day and we're honoring veterans too, so if you're a veteran, stop by on Thursday - we have a gift for you.

While you're deciding which fuel is best for your car, you can also save money on fuel during the promotion. We want you to try the ethanol blends, and we're supporting ethanol discounts during the promotion from 11 to 1 on Thursday. You can save 15 cents on E15, which is already priced below regular gas. Flex fuel vehicles can save 30 cents on E30, and E85 will be just 85 cents a gallon.

The fact that Sandra's Quick Stop added blender pumps is a big deal. Governor Brownback is stopping by for the event on Thursday. We'll be there with staff from Kansas Corn, Renewable Fuels Association and Sandra's to answer questions. We hope you'll join us for lunch and fuel discounts.

Jeff Oestmann is CEO of the East Kansas Agri-Energy ethanol plant in Garnett.

VOTE...

FROM PAGE 1A

as well as Monroe and Jackson Townships. Between 1,800-1,900 people - roughly a third of all registered voters in the county - cast their ballots at the community building, Gettler said.

The number of people who have already voted represents about 11 percent of all registered Anderson County voters. There are 5,410 registered voters in the county. That breaks down to 1,224 Democrats, 53 Libertarians, 2,257 Republicans and 1,876 unaffiliated voters.

All elected county officials are up for election today.

In addition to the clerk's race and the City of Garnett commission, other local offices mostly include incumbents who are running uncontested. The exception is Dave Pracht, who is running for a seat on the county commission being vacated by Eugene Higherberger of Westphalia. Those races include:

- Anderson County Commission District 2 incumbent Jerry Howarter, a Democrat.
- Anderson County Commission District 3, Dave Pracht, a Democrat.
- Sheriff incumbent Vernon Valentine, a Republican.
- Register of Deeds incumbent

Sandra Baugher, a Democrat.

• Treasurer incumbent Dena McDaniel, a Republican.

• Anderson County Attorney incumbent Brandon Jones, a Republican.

Offices in the Kansas Senate and House and U.S. Congressional seats from Kansas, and state school board districts also will be up for election.

At the state level, Caryn Tyson, R-Parker, who represents the 12th Senate District, which covers all of Anderson County, is attempting to retain her seat. She is being challenged by an unaffiliated write-in candidate, Carla Giffith. The Democratic candidate has withdrawn, but his name will still appear on the ballot.

Kevin Jones, R-Wellsville, who represents the 5th District House of Representatives, which covers most of Anderson County, will face Democrat Doug Walker, who served in the Kansas Senate from 1989 to 1996.

Trevor Jacobs of Fort Scott is running unopposed for the 4th District in the Kansas House. The 4th District covers a small part of Anderson County near Kincaid.

At the federal level, Democrat Britani Potter of Ottawa is

attempting to unseat incumbent Lynn Jenkins, a Republican from Topeka, for the 2nd District House of Representatives.

U.S. Senator Jerry Moran, a Republican from Hays, will face Patrick Wiesner of Overland Park.

Local results can be found at www.garnett-ks.com, on The Anderson County Review's Facebook page and on Newsline 2500 by calling (785) 448-2500, press VOTE (8683).

Have you been diagnosed with Non-Hodgkin's Lymphoma?

If you have been diagnosed with a serious medical condition, such as Non-Hodgkin's Lymphoma, after exposure to **Monsanto's Roundup herbicide**, you may be entitled to compensation.

Call Us Toll Free: 800-490-2720

Pulaski Law Firm

2925 Richmond Ave. #1725, Houston, TX 77098

FORMERLY THE GARNETT PLAINDEALER, THE ANDERSON COUNTY REPLICAN, THE REPUBLICAN-PLAINDEALER, THE GARNETT JOURNAL PLAINDEALER, THE GARNETT REVIEW, THE GREELEY GRAPHIC, THE ANDERSON COUNTIAN.



Published each Tuesday by Garnett Publishing, Inc., and entered as Periodicals Class mail at Garnett, Ks., 66032, permit number 214-200. Copyright Garnett Publishing, Inc., 2016.

Postmaster: Send address corrections to: The Anderson County Review 112 W. 6th Ave. • P.O. Box 409 • Garnett, KS 66032 (785) 448-3121-review@garnett-ks.com

Notice to condemn land for highway purposes

(Published in The Anderson County Review Tuesday, November 8, 2016)

IN THE DISTRICT COURT OF ANDERSON COUNTY, KANSAS

IN THE MATTER OF THE CONDEMNATION OF LAND FOR STATE HIGHWAY PURPOSES,

RICHARD CARLSON, Interim Secretary of Transportation for the State of Kansas, Plaintiff,
v.
Henry L. Gatlin, et al., Defendants.

Case No. 16-CV-40

PURSUANT TO CHAPTER 26 KANSAS STATUTES ANNOTATED TITLE TO REAL ESTATE INVOLVED

NOTICE OF APPRAISERS' HEARING

Notice is hereby given that the undersigned appraisers, appointed by the Court, will, in accordance with the provisions of K.S.A. 26-501 et seq., hold a public hearing on all matters pertaining to their appraisal of compensation and the assessment of damages for the taking of the lands or interests therein sought to be taken by the plaintiff in the above-entitled matter covering the following described lands: TRACT No. 10

Fee Owners:

Henry L. Gatlin and Carol M. Gatlin, husband and wife

Address: 26639 N.E. 1550 Road, Garnett, Kansas 66032

Copy To: Joseph R. Borich, III, KSC# 15234
4630 W. 137th Street, Suite 100
Leawood, Kansas 66224
Attorney for Owner, Henry & Carol Gatlin

Lienholders and Other Interested Parties:
Board of County Commissioners of Anderson County, Kansas (Attn: County Treasurer)

Address: Courthouse, 100 E. 4th Avenue, Garnett, Kansas 66032

By Resolution 2004,1108:1 authorizing the creation of Anderson County Sewer District No. 1. Also, possible County Property Taxes.

REAL PROPERTY INTERESTS TO BE ACQUIRED:

A PERMANENT EASEMENT for highway right of way, removal of borrow material, or for other highway purposes over and upon a tract of land in the Southeast Quarter of Section 35, Township 21 South, Range 19 East of the 6th P.M., Anderson County, Kansas, being all of that tract of land described in deed recorded in Book 164 at Page 108A in the office of the Register of Deeds in and for said Anderson County, described verbatim as follows:
"Beginning at the point of intersection of the West Right-of-way line of U.S. Highway 169 and the South line of Section 35, Township 21 South, Range 19 East of the Sixth Principal Meridian, thence West 200 feet, thence North 320 feet, thence East 650 feet, to U.S. Highway 169, thence in a Southwesterly direction along U.S. Highway 169, 560 feet, more or less, to the place of beginning."
The above described tract contains 3.08 acres, more or less.

TRACT No. 16

Fee Owners:

Rhonda R. Freeman Living Trust
c/o Rhonda R. Freeman, Trustee
Address: 19208 S.W. Missouri Road, Welda, Kansas 66091

Lienholders and Other Interested Parties:
Board of County Commissioners of Anderson County, Kansas (Attn: County Treasurer)

Address: Courthouse, 100 E. 4th Avenue, Garnett, Kansas 66032

Possible County Property Taxes.

REAL PROPERTY INTERESTS TO BE ACQUIRED:

(a) A PERMANENT EASEMENT for highway right of way, removal of borrow material, or for other highway purposes over and upon a tract of land in the Southwest Quarter of Section 36, Township 21 South, Range 19 East of the 6th P.M., described as follows: COMMENCING at the Southwest corner of said Quarter Section; thence on an assumed bearing of North 00 degrees 41 minutes 33 seconds West, 697.00 feet along the West line of said Quarter Section to the Southwest corner of a tract of land described in a deed recorded in Book 164, Page 157 in the Register of Deeds Office, Anderson County, Kansas and the POINT OF BEGINNING; FIRST COURSE, thence North 89 degrees 18 minutes 27 seconds East, 46.56 feet along the South line of said tract of land; SECOND COURSE, thence North 09 degrees 08 minutes 01 second East, 572.70 feet to the North line of said tract of land; THIRD COURSE, thence South 89 degrees 18 minutes 27 seconds West, 144.29 feet along said North line to said West line; FOURTH COURSE, thence South 00 degrees 41 minutes 33 seconds East, 564.30 feet along

said West line to the POINT OF BEGINNING. The above described tract contains 1.24 acres, which includes 0.39 acres of existing right of way, resulting in an acquisition of 0.85 acre, more or less.

(b) A PERMANENT EASEMENT for the construction of an entrance over and upon a tract of land in the Southwest Quarter of Section 36, Township 21 South, Range 19 East of the 6th P.M., described as follows: COMMENCING at the Southwest corner of said Quarter Section; thence on an assumed bearing of North 00 degrees 41 minutes 33 seconds West, 697.00 feet along the West line of said Quarter Section to the Southwest corner of a tract of land described in a deed recorded in Book 164, Page 157 in the Register of Deeds Office, Anderson County, Kansas; thence North 89 degrees 18 minutes 27 seconds East, 46.56 feet along the South line of said tract of land to the Easterly right of way line of the proposed highway; thence North 09 degrees 08 minutes 01 second East, 343.24 feet along said Easterly right of way line to the POINT OF BEGINNING; FIRST COURSE, thence continuing North 09 degrees 08 minutes 01 second East, 100.01 feet along said Easterly right of way line; SECOND COURSE, thence South 26 degrees 59 minutes 24 seconds East, 31.25 feet; THIRD COURSE, thence South 09 degrees 52 minutes 05 seconds West, 50.00 feet; FOURTH COURSE, thence South 44 degrees 47 minutes 54 seconds West, 30.49 feet to the POINT OF BEGINNING. The above described tract contains 0.03 acre, more or less.

This easement shall terminate and be released 180 days after the completion of the project for which it was acquired.

TRACT No. 47

Fee Owners:

Curtis S. Umbarger and Mary Ann Weiss Umbarger, husband and wife
Address: 23500 N.W. Morris Road, Garnett, Kansas 66032

Rose Marie Miller, and spouse if any
Address: 523 N. Oak, Garnett, Kansas 66032

Ruby Elaine Weiss, and spouse if any
Address: 219 W. 3rd, Garnett, Kansas 66032

Jesse J. and Donna M. Hale Living Trust, dated 03/25/2002
c/o Rose Mary Turner, Co-Trustee
Address: 1403 S. Walnut Street, Garnett, Kansas 66032, and
c/o Dennis D. Hale, Co-Trustee
Address: 3200 Skylark, Topeka, Kansas 66605

Lester M. Hawley, and spouse if any
Address: 20401 S. State Line Road, Belton, Missouri 64012-9280

Leland M. Hawley, and spouse if any
Address: 10914 W 53rd St, Shawnee, Kansas 66203-1842

Jacqueline R. Hawley, and spouse if any
Address: 106 W. 27th Street, Eudora, Kansas 66025-7100

Copy To: Terry J. Solander, KSC# 07280
503 S Oak St / PO Box 348
Garnett, Kansas 66032
Attorney for Weis Family Farm

Possible Interest Holders:

Rose Mary Turner, and spouse if any
Address: 1403 S. Walnut Street, Garnett, Kansas 66032

Dennis D. Hale, and spouse if any
Address: 3200 Skylark, Topeka, Kansas 66605

Jesse D. Hale, and spouse if any
Address: 1297 2500 Avenue, Abilene, Kansas 67410

Clinton J. Hale, and spouse if any
Address: 1297 2500 Avenue, Abilene, Kansas 67410

Daniel R. Hale, and spouse if any
Address: 1297 2500 Avenue, Abilene, Kansas 67410

Lienholders and Other Interested Parties:
Board of County Commissioners of Anderson County, Kansas (Attn: County Treasurer)
Address: Courthouse, 100 E. 4th Avenue, Garnett, Kansas 66032
Possible County Property Taxes.

Copy To: James R. Campbell, KSC# 14631
Anderson County Counselor
511 Neosho St.
Burlington, Kansas 66839
Attorney for Anderson Co. Board Commissioners

REAL PROPERTY INTERESTS TO BE ACQUIRED:

(a) A PERMANENT EASEMENT for highway right of way, removal of borrow material, or for other highway purposes over and upon a tract of land in the Northeast Quarter of Section 7, Township 21 South, Range 20 East of the 6th

P.M., described as follows: COMMENCING at the Northwest corner of said Quarter Section; thence on an assumed bearing of North 87 degrees 38 minutes 23 seconds East, 97.70 feet along the North line of said Quarter Section to the POINT OF BEGINNING; FIRST COURSE, thence continuing North 87 degrees 38 minutes 23 seconds East, 35.38 feet along said North line to the Westerly right of way line of the existing highway; SECOND COURSE, thence South 04 degrees 31 minutes 43 seconds East, 403.27 feet along said Westerly right of way line; THIRD COURSE, thence on a curve of 11399.20 feet radius to the right, an arc distance of 824.50 feet, along said Westerly right of way line, with a chord which bears South 02 degrees 27 minutes 23 seconds East, 824.32 feet; FOURTH COURSE, thence South 00 degrees 23 minutes 04 seconds East, 1419.57 feet along said Westerly right of way line to the South line of said Quarter Section; FIFTH COURSE, thence South 87 degrees 53 minutes 44 seconds West, 15.01 feet along said South line; SIXTH COURSE, thence North 00 degrees 23 minutes 04 seconds West, 445.78 feet; SEVENTH COURSE, thence North 35 degrees 22 minutes 35 seconds West, 61.03 feet; EIGHTH COURSE, thence North 00 degrees 23 minutes 04 seconds West, 100.00 feet; NINTH COURSE, thence North 34 degrees 36 minutes 27 seconds East, 61.03 feet; TENTH COURSE, thence North 02 degrees 01 minute 31 seconds West, 1494.11 feet; ELEVENTH COURSE, thence North 04 degrees 31 minutes 02 seconds West, 506.84 feet to the POINT OF BEGINNING. The above

described tract contains 1.88 acres, more or less.

(b) A PERMANENT EASEMENT for highway construction over and upon a tract of land in the Northeast Quarter of Section 7, Township 21 South, Range 20 East of the 6th P.M., described as follows: COMMENCING at the Northwest corner of said Quarter Section; thence on an assumed bearing of North 87 degrees 38 minutes 23 seconds East, 68.03 feet along the North line of said Quarter Section to the POINT OF BEGINNING; FIRST COURSE, thence continuing North 87 degrees 38 minutes 23 seconds East, 29.66 feet along said North line to the Westerly right of way line of the proposed highway; SECOND COURSE, thence South 04 degrees 58 minutes 41 seconds East, 45.70 feet along said Westerly right of way line; THIRD COURSE, thence North 54 degrees 43 minutes 23 seconds West, 39.05 feet; FOURTH COURSE, thence North 04 degrees 31 minutes 43 seconds West, 21.82 feet to the POINT OF BEGINNING. The above described tract contains 0.02 acre, more or less.

This easement shall terminate and be released 180 days after the completion of the project for which it was acquired

(c) A PERMANENT EASEMENT for the construction of an entrance over and upon a tract of land in the Northeast Quarter of Section 7, Township 21 South, Range 20 East of the 6th P.M., described as follows: COMMENCING at the Northwest corner of said Quarter Section; thence on an assumed bearing of North 87 degrees 38 minutes 23

seconds East, 97.70 feet along the North line of said Quarter Section to the Westerly right of way line of the proposed highway; thence South 04 degrees 31 minutes 02 seconds East, 506.84 feet along said Westerly right of way line; thence South 02 degrees 01 minute 31 seconds East, 1173.98 feet along said Westerly right of way line to the POINT OF BEGINNING; FIRST COURSE, thence continuing South 02 degrees 01 minute 31 seconds East, 60.02 feet along said Westerly right of way line; SECOND COURSE, thence South 89 degrees 36 minutes 56 seconds West, 42.55 feet; THIRD COURSE, thence North 00 degrees 23 minutes 04 seconds West, 60.00 feet; FOURTH COURSE, thence North 89 degrees 36 minutes 56 seconds East, 40.83 feet to the POINT OF BEGINNING. The above described tract contains 0.06 acre, more or less.

This easement shall terminate and be released 180 days after the completion of the project for which it was acquired.

Such hearing will commence at 9:30 a.m. on the 28th day of November, 2016, in the Law Library, 3rd Floor, at the Anderson County Courthouse, 100 E 4th Avenue, Garnett, Kansas, or on the following day without further notice, and may be continued thereafter from day to day or place to place until the same is concluded with respect to all properties involved in the action. Any party may present either oral or written testimony at such hearing. A viewing of the properties involved in this action will commence immediately after the hearing.
You are further notified that the court has

set the 3rd day of December, 2016, for the filing of the awards of these appraisers with the Clerk of the District Court, and any party dissatisfied with the award may appeal therefrom as by law permitted within thirty (30) days from the day of filing.

You are further notified that pursuant to K.S.A. 26-507 once the plaintiff deposits the amount of the appraisers award into the hands of the Clerk of the District Court, the title, easement, or interest appropriated in the land condemned shall thereupon immediately vest in the plaintiff, and it shall be entitled to the immediate possession of the land to the extent necessary for the purpose for which taken and consistent with the title, easement, or interest condemned.

Scott D. Schulte
Dwayne Foltz
Beth Mersman
COURT-APPOINTED APPRAISERS
Prepared by:
BARBARA W. RANKIN
Chief Counsel
/S/ Jason K. Pollock
JASON K. POLLOCK, No. 25533
GELENE SAVAGE, No. 15491
Office of Chief Counsel
Kansas Department of Transportation
Eisenhower State Office Building
700 SW Harrison Street, 3rd Floor West
Topeka, Kansas 66603-3745
(785) 296-3831, fax (785) 296-0119
jason.pollock@ks.gov
Attorneys for Plaintiff
nv81f



Meticulously maintained and restored home offers historical charm with modern amenities to include 3 bedrooms and 2 Baths that were completely gutted and redone. Large formal dining room, Bright and airy living room has brick tiled fireplace, small sitting room, 3 large bedrooms with original transform windows above the doors. Original stained glass entry door. The entrance foyer has a beautiful original chandelier and wood carved staircase. Original crown molding and doors with original glass knobs. New plumbing, electrical, new furnace and air condition, new water and sewer lines. New roof. Full unfinished basement with inside and outside entrance. Large bac deck. Detached garage with carport. This home built in 1890 is move-in ready and priced to sell at \$165,000. For more information, call Sherry at Benjamin Realty, (785) 448- 2550.



A Home To Call Your Own. 2 bedroom, 1 bath bungalow style home built in the 1940's. Living room has built-in bookcase. Full kitchen with breakfast room & family on the enclosed back patio area. On a corner lot with fenced back yard & one car detached garage.

This Beautiful Brick Fronted 3 bedroom, 2 bath ranch home is on a large corner lot. Home was built for an informal, relaxed lifestyle with a flowing floor plan. You'll love the brick fireplace, new wood flooring in entry, living room, kitchen & dining room, new kitchen counter tops. 2 car attached garage, plus 1 car detached garage with separate workshop room, the large RV carport, neighbor friendly corner site & even the price. **\$155,750.**

Large Corner Lot with front circle drive & separate drive to garage. This spacious ranch style home built in 1962 has 2168 sq. ft. of living space. Large sunny & bright living room has built-in bookcase & wood-burning fireplace. Large family room also has a wood-burning fireplace & opens to the patio area. Large eat-in kitchen with lots of cabinets & counters. 3 spacious bedrooms with large closet & storage drawers. Baths have beautiful tiled counter tops. Full partially finished basement has 4th bedroom & 2nd family room with built-in grill. 2 car attached garage. Located close to city park, red, center & golf course. **\$159,900.**

This Beautiful Brick Ranch built in 1995 has 2120 sq. ft. of space. 2 large bedrooms with 2.5 baths. Large open living, dining & kitchen area. Oversized 2 car attached garage. Located on 1/2 acre at Lakeview Estates. Sit on your front, covered patio & enjoy the tranquility of the lake. **\$229,500.**

When buying or selling **REMEMBER SHERRY**
Visit our website at www.benjaminrealty.info
Benjamin Realty
Sherry Benjamin, Broker
Land • Homes • Commercial
201 N. Maple
Garnett, Ks 66032
benjaminrealty@earthlink.net
Office: (785) 448-2550
Home: (785) 241-0532
Cell: (785) 304-2029

Property Source, LLC
913-884-4500
Chris Cygan - Broker 785-418-5435

PROJECT - Fix up this 3 bedroom, 1 1/2 bath home just the way you like. Nice corner lot, siding and windows started. Central heat & A/C is in. Perfect for your new home or rental/investment. Only ~~\$26,500~~ **\$22,500.**

GREAT MIX - 14+ Acres, close to 125 trees, meadow, creek, great spot to build a pond. **SOLD** ~~\$39,900~~ **\$29,900.** Financing.

VIEWS-VIEWS - 10 acres, Big hillside, water meter included, scattered trees. Opportunity Time ~~\$42,500~~ **\$34,900.**

20 ACRES - Paved road, driveway, water meter, electric, trees, meadows, creek, Central Heights schools. **\$99,900.**

LAND BARGAIN - 9 acres, north of Ottawa, close to paved road. Fantastic Investment. Opportunity @ **\$27,500!!**

BEST BUY - 7.5 Acres, just outside Ottawa, paved road, area of nicer and newer homes. Bank Owned Bargain. Only **\$22,900.**

Need to sell? Just call, we'll get it done!
YOUR SOURCE FOR GREAT INVESTMENTS!

Beautiful, well taken care of home with all kinds of storage. 2 beautiful brick fireplaces, one with granite hearth, 1 gas & 1 wood burning, bar downstairs, 2 sump pumps. All appliances stay with home. Nice deck outside dining room sliding doors. 2 car detached garage with a loft for more storage. 2 lots with fenced back yard. Close to downtown. Just bring your updating ideas! Make your appointment today. **\$132,500.**

All Brick Front Home! New central heat & air! New roof! New hot water heater! New sink & counter tops in kitchen! New heated shop/man cave! Plus 2 car attached garage with heat & air! Kitchen is open to the family room! Large laundry room/office! New driveway & sidewalks! Covered patio! 2 Large bedrooms with 2 full baths! This house has a lot to offer! Close to walking trail! Close to City Park! **\$89,750.**

Beautiful Ranch Home! With a full finished basement. A lot of living space! Large eat-in-kitchen/freshly painted & new back splash. Formal dining room. Large living room. Cozy family room. Owner has removed the paneling/has new sheet rock. Brick fireplace. Large laundry room. The main bath has new tile floors & new paint. Basement has a large family room & full bath. Large storage room with a newly painted floor. 2 car attached garage. Covered patio. No worries with this very dry basement. **\$142,000.**

Move in ready!! Seller has done all the work for you. New kitchen counters, new interior paint & new flooring. Newer metal roof. 2 bedroom, 1 bath with a 1-car attached garage with workshop & storage shed. Large breakfast room off the kitchen. Good location & close to downtown. You have to see to appreciate this cute & well taken care of home. Very motivated seller! **\$43,000.**

Ask about our Real Estate Auction Service • 785-448-6191
114 W. 4th, Garnett
(785) 448-6191
(800) 530-5971
(785) 448-6200
info@garnettrealstate.com
Visit our informative website at www.garnettrealstate.com
You can search all MLS listings & more.
Agents to assist you:
Carla Walter, Broker (785) 448-7658
Carli Barnes (785) 448-5300
Delton Hodgson (785) 448-6118
Ron Ratliff (785) 448-8200
Scott Schulte (785) 448-5351
Michelle Ware (785) 214-8489
Ryan Walter (785) 448-4323
Ginger McLeod (785) 214-2912
THE SCHULTE AGENCY INC.
SERVING OUR COMMUNITY FOR OVER 50 YEARS.
Call us for a quote on all of your insurance needs

Save money on your legal costs by directing your attorney to place those notices only in The Anderson County Review.
Attorneys & Clients feel free to contact us at **(785) 448-3121**

HISTORY...

FROM PAGE 1A

Day in 1918 symbolized the end of blood shed that brutally changed the landscape and dynamic of the world. The Great War involved more casualties than most people can fathom. The men who enlisted and those drafted into that conflict knew the price they could pay to be a part of the Great War and a part of history. No family in Anderson County knew that price better than the family of Samuel and Sarah Jane (Stirlen) Craig.

The Craigs were married in 1861, when the climate of the world around them was in upheaval. The American Civil War is tearing the nation to shreds. The Craigs lived in rural Louisa County, Iowa where Samuel grew crops and they grew their family as well in relative peace, away from the fighting. To their union, 10 children were born, Louisa 1862, Florence 1863, Owen 1865, Leota 1867, James 1870, William 1872, John (Mark) 1873, Dan 1875, Clarence (Curran) 1877 and Elizabeth Mary 1882. Only 7 lived to adulthood, 2 died in infancy Louisa and James, Owen died in a farming accident at age 7.

Samuel and Sarah moved their family to Anderson County shortly after the birth of their youngest daughter, Elizabeth Mary in 1882. They bought a farm north of Garnett and settled into a routine life of farming and raising their children. The four boys, William, Mark, Dan and Curran went to school in Garnett and the younger three graduated in succession from Garnett High School in 1891, 1893 and 1895 respectively.

In 1898, after the onset of the Spanish American War, Kansas Governor Leedy issued a call for volunteers to join the volunteer infantry. The three youngest Craig boys answered that call and mustered into the 20th Kansas Volunteers in May of 1898 at Camp Leedy in Topeka. They were 25, 23 and 21 years old. As was the time then, the boys were trained for a short time, issued their uniforms and sent to San Francisco to await their orders from their superior officer, General Funston of Iola. While sta-

tioned in California, the older brothers are promoted to lead their unit. Captain Dan Craig is the leader of his unit with older brother Mark as his 1st Lieutenant in command over the youngest brother, Private Curran Craig. They stayed in San Francisco until November of 1898 when they were finally deployed to the Philippines. They joined the forces there fighting for Filipino independence, and by February 5 US troops had retaken the Capitol of Manila. Not willing to go down without a fight, pockets of insurgents were set up in the nooks and crannies of the Tulihan River that borders the capital city. There in a forward fighting position 26 March 1899, Pvt. Clarence Curran Craig is shot and killed in front of his brothers. The two surviving Craigs charged the field to recover their brother's body. While returning him behind US lines, 1st Lt. J.M. Craig took a severe leg wound. It can be inferred by the language in his 1st Purple Heart Report that the wound was most likely in the thigh and could have quite possibly taken his life had he been further from the medics.

The brothers escorted their Curran's body home from the Philippines. Curran is buried in Garnett Cemetery in the family plot that in 1906, 1915, and 1916 would include his father Samuel, sister Leota and mother Sarah respectively. Following their return to Garnett, the brothers were faced with a decision, remain in the Armed services, or take up farming as their oldest brother, William, had. Captain Dan Craig would elect to reenlist in the 36th Infantry, and 1st Lt. John M. Craig would join the 16th Infantry. In 1901, Mark married a young lady he met in 1898 while stationed in San Francisco, Cassie O'Donnell. Cassie, like most military wives still today was given the choice to either follow her husband to his duty stations or stay home. She chose to stay in California and would live out her married life with her husband half way around the world. They would have no children.

Mark's assignment to the 16th infantry is significant because the unit was eventu-

ally assimilated into another great division based in Kansas. The 16th Infantry was absorbed by what was then the 1st Expeditionary Division, which is still around today. The 1st Expeditionary Division eventually renamed the 1st Infantry Division still finds its home at Fort Riley, KS, and is more commonly called, "The Big Red One." However after the turn of the decade in 1910, the 16th Infantry is based in the Hoboken, NJ and NYC area, in fact to this day several of the battery roads around the Hoboken Port have been renamed to honor men of the 16th Infantry and one such road was named and remains Col. JM Craig Road.

Under the command in 1916 of Gen. Joseph "BlackJack" Pershing, Lt. Craig was part of the punitive missions to find Pancho Villa in Mexico. While there, they pushed over 350 miles into Mexico but never captured Villa. Meanwhile, the Battles are brewing in Europe. The brutal trench fighting has been the sustenance of newspapers for two years, and it appears that American involvement is imminent.

In April 1917 following President Wilson's request for a declaration of war, Congress obliges and American troops are mobilized. At the start of American involvement in the Great War, President Wilson considered Gen. Frederick Funston for the position of General of the Armies, but when he died suddenly from a heart attack in February 1917, the position fell upon his next in line, Gen. JJ Pershing. One of the first four units to land on French soil near St. Nazaire contains Col. JM Craig and the 16th Infantry in June of that year. The AEF or American Expeditionary Force is there to help train and guide the young and poorly trained French forces. Independence Day 1917, Craig and his unit are selected to bear the colors through the streets of Paris with Gen. Pershing. Pershing would direct them during a 5 mile march to Picpus Cemetery to pay homage to a great Revolutionary War Hero, the Marquis de Lafayette. While marching past, Pershing cried out, "Lafayette, we are here!"

The AEF would stay there

in France as strictly an advisory position until November of that year when they took their first casualties. Pershing and Craig had a close relationship, they had served together at this point for almost ten years. Pershing as General of the Armies, reported directly to Field Marshall Ferdinand Foch of France. With that line of command it is not hard to discern that not only Pershing had a good relationship with Foch but Lt. Col Craig knew Foch as well. It is not until July of the following year that the 16th Infantry saw its bloodiest battle.

The Battles of Soissons, Reims and the Second Battle of the Marne are geographically closely linked. The Battle lasted 4 total days, and in that time frame the death toll was staggering. The Allies were grossly outnumbered. The Germans had the element of surprise. 15 July 1918 the German Army attacks the town of Reims and marches on to Soissons. 3 days later, on 18 July 1918, Foch launches 34 units and 350 miscellaneous pieces of field artillery and tanks near Soissons. 20 July 1918, the German Army sounds retreat and the forces turn back.

In 4 total days of fighting the Allies report 107,000 casualties where the Germans sustain 168,000 for a total of 275,000 dead. For comparison, in 2013 Topeka, KS population data shows 127,000 residents. During those four days of fighting, the entire city of Topeka is killed, twice with some left over. In the throes of WWII, the United States lost just over 407,000 in four years of fighting. The Great War is by far the most costly, bloody, brutal and tragic fight the world had ever seen before.

Posthumously, Lt. Col. John Marcus Craig was awarded the Distinguished Service Cross and the Silver Star. From his commendation report, "after all officers on the field are either killed or wounded, Lt. Col. John M. Craig left headquarters and assumed command of an assault battalion. Craig led a small detachment of soldiers in personal reconnaissance, locating and destroying machine gun nests, thereby allowing the advancement of the battalion." After receiving the telegram from the war department, Mrs.

Craig gave an interview to the San Francisco Chronicle telling them that when his body was recovered, Lt. Col. Craig was still clutching his sidearm and had more than a dozen bullet wounds. At home in Garnett, Craig's oldest brother William tells the Garnett Review, "We received the news of Mark's death in action from the War Department today (8 August 1918). We were prepared for it, for Mark was a fighter."

Lt. Col. Craig would go on to receive not only the Distinguished Service Cross and Silver Star, he received 2 Purple Hearts, the first for injuries from the Spanish American War and the second for injuries during the Great War and several others, but he would receive the French equivalent of the Congressional Medal of Honor, the Croix de Guerre. He was buried originally in the Oisne-Aisne American Cemetery, ironically in the same cemetery as another Anderson County man, Corp. Harry A. Fuller. Craig's remains were later exhumed and brought to San Francisco. 21 May 1921, Lt. Col. John Marcus Craig was laid to rest where his wife could be buried next to him. Cassie O'Donnell Craig never remarried and would die in 1944. Dan Craig would go on to finish his career in the military shortly after the close of the Great War, and would not live long enough to see the fragile peace disintegrate into the next world war. Before his death in 1929 he told the Garnett Review he had planned on going to France to find his brother to keep him safe, but didn't make it in time.

In Garnett, following the death of Mark in 1918, the Craig family consisted of William who died in 1931, Florence (Craig) Lawellin who died in 1943, and Elizabeth Mary (Craig) Thomas who also died in 1943. Elizabeth and her husband, John Thomas have descendants still in the Garnett area today.

The stories of bravery from our county are thick and strewn about the history of the world in unfathomable ways. Lt. Col. John M. Craig started his journey in the military as just a farm boy looking for an opportunity with his brothers. Humbly enlisting to aide a country he never imagined he'd ever see, he and his brother partook in a tragedy that changed the dynamic of their family and came back to the fight feeling that their duty was unfulfilled. This is not an uncommon theme when looking into any Anderson County family's history. So many times in the course of our existence the men and women of this county have risen to the call, and unfortunately like many others, Lt. Col. J.M. Craig's life was ended too soon. This year as we celebrate the men and women in uniform, let us strive to remember those whom time has forgotten. Let us take a moment to call upon the men whose families have long since passed and are no longer able to remember them as fondly as those here today. Let us remember that like so many stories around us, entire families went off to war and not all of them came home. Let us bring them honor by recognizing their sacrifice and remembering their names."

37th Annual

**Christmas
Craft Festival**



**Craft
& Gift Annex**

**Sat., Nov. 19
Burlington
9am - 4pm
Burlington
High School
830 Cross Street**

Sponsored by Burlington Recreation.
More info - (620) 364-8484

With over 150 booths under one roof!

Only 200' east of the High School at the Middle School. With over 100 additional booths!

From our fields to our tanks,
ethanol delivers the power
we need with the security
essential to our nation.



**Local.
Energy.
Independence.**

**Celebrate more fuel
choice with us at:**

Sandra's
Quick Stop

Junction HWY 59 and HWY 169, south of Garnett

New Ethanol Blender Pumps

11 a.m. - 1 p.m.

Thurs., Nov. 10

- E85 fuel for 85¢
- 30¢/gal. off E30 (for Flex Fuel vehicles)
- 15¢/gal. off E15 for 2001 or newer vehicles
- \$5 fuel cards for veterans
- Free burgers/brats 11 a.m.-1 p.m.
- **Meet Governor Sam Brownback**



See you there!

Sponsored by:
East Kansas Agri Energy,
Renewable Fuels Association, Kansas Corn

CALENDAR

- Tuesday, November 8**
- 9 a.m. - TOPS at Garnett Methodist Church basement, 2nd & Oak
 - Noon - Rotary International Club at Garnett Inn and Suites
 - 3:30 p.m. - ACJH wrestling at Iola Invitational
 - 3:30 p.m. - ACHS varsity scholar bowl at Wellsville
 - 3:30 p.m. - Central Heights Scholars Bowl at Wellsville
 - 4 p.m. - Crest Scholars Bowl Invitational
 - 5 p.m. - Crest Middle School basketball at home with Northeast-Arma
 - 6:30 p.m. - Garnett Optimist Club at Mr. D's Pioneer Restaurant
- Wednesday, November 9**
- Friends of the Prairie Spirit Trail
 - 10:30 a.m. - Kincaid Community Library Family Story Time
 - 1 p.m. - Garnett Duplicate Bridge at the Garnett Inn
 - 6 p.m. - Central Heights Booster Club
 - 6:30 p.m. - Garnett Optimist Club at Mr. D's Restaurant
- Thursday, November 10**
- 4 p.m. - ACJH wrestling at home



THE ANDERSON COUNTY REVIEW 11-8-2016 / Photo Submitted

The Central Heights Honor Flight took place June 2 and 4 and took veterans to visit memorials at Washington, D.C.

Central Heights Honor Flight grateful for support

The Central Heights High School Honor Flight organizers said they would like to thank their supporters for their financial contributions to their program. The group enjoyed an incredible cross-generational experience to Washington D.C. on June 2 and 4.

Organizers are beginning plans for a June 2017 trip. If you are aware of a WW II, or Korean Era Veteran in the area please contact Central Heights High School.

Those who helped make the trip possible included: American Legion Post 228, Albert Keerer, Amanda Stinebaugh, Audra Seyler, Blue Mound

American Legion, Bob Moews, B.N. Scholl, Brian Spencer, Cornerstone Church, Dale Pearson, Dale Vogt, Errol Hooper, Franklin County Sheriff's Office, Garnett Advocate, Jack Davis, La Societe 40&8 Nationale, Modern Woodman, Ottawa VFW, Ottawa Wal-Mart, Phyllis Callahan, Richmond Health Care, Richmond Ruritans, Rick Pryor, Tom Horstick, 40&8 Locale 786.

Those who attended included: Wayne (Francis) Ecclefield; Donald Carr; Samuel Farley; Marvin Jardon; Eugene Rieder; Ben Demoss; Joe Oakes; Harry Shaver; Dale Vogt; John Snodell; Lloyd Switzer; Ralph Detwiler; Albert Keefer; Leonard

Hoopos; Donald Higdon; Henry Butter; Martin Burik; Ronald Thompson; Merrick Brown; Devin Stegner; Jason Clissold; Jared Oshel; Sam Wood; Jacob Pryor; Kyle Cardin; Tess Cotter; Lindsey Folsom; Regan Markley; Destyni Howard; Alyssa Jones; Kinlee Gamberal; Jasmine Kempel; Grace Spencer; Madeline Volkman; Paige Stockard; Olivia Stockard; Jo Sparks; Thomas Horstick; Linda Horstick; Jo Nelson; Dr. Darryl Nelson; Aaron Winkleman; Brian Spencer; Errol Hooper; Linda Herrick; Martin Feltner.

PLAZA 6
1802 1/2 East St.,
IOLA
More information:
(620) 365-2255
or visit
www.bbtheatres.com

PLAZA
AMERICA'S OLDEST CINEMA
Ottawa
MOVIE MUSEUM OPEN 1-4 P.M.
For show times visit our website
plazacinemagicexperience.com
209 S. Main, Historic Downtown Ottawa
Cinema Line 785.242.0777

TOGETHER:
MORE SAVINGS
for more than 1.5 million customers

We are **Better Together**

TOGETHER:
A LOCAL TEAM YOU CAN TRUST
with a proven record of strong community involvement

TOGETHER:
GROWING JOBS AND THE LOCAL ECONOMY
by producing 13,000 megawatts to meet growing demand

TOGETHER:
GREATER RELIABILITY
from over 51,000 miles of distribution lines

TOGETHER:
CLEAN, RENEWABLE ENERGY
can meet 45% of our retail demand with zero emissions

Working as one, we can do more to offer reliable service, competitive rates, and generate a positive impact on your local economy. That's what makes us all better together.



Win over
\$1000
in prizes in

THE GREAT
Christmas
GIVEAWAY

The area's **biggest Christmas Giveaway**, making your Holidays Brighter!

Check out next week's Review for contest rules and start playing!

If your business would like to be included in the **Great Christmas Giveaway Promotion** contact Stacey ASAP at 785-448-3121 today!



SINCE 1865 • GARNETT PUBLISHING, INC. • (785) 448-3121

Notice to sell property

(First published in The Anderson County Review Tuesday, November 8, 2016)

IN THE DISTRICT COURT OF ANDERSON COUNTY, KANSAS
CIVIL DEPARTMENT

JPMorgan Chase Bank, National Association, successor by merger to Chase Home Finance LLC
Plaintiff,
vs.
Christina D. Brewer and James R. Brewer, et al.
Defendants.

Section, thence South 89 degrees, 08 minutes, 00 seconds, West 480.16 feet to the point of beginning

ALSO DESCRIBED AS:
Beginning at the Southwest corner of the Southwest Quarter (SW/4) of Section Twenty-eight (28), Township Twenty-two (22) South, Range Twenty-one (21) East of the Sixth Principal Meridian, Anderson County, Kansas, thence North along the West line of said Southwest Quarter (SW/4) Section, 1773.96 feet, thence North 89 degrees, 29 minutes, 12 seconds East 683.57 feet, thence South 26 degrees, 44 minutes, 26 seconds West 506.26 feet, thence South 02 degrees, 05 minutes, 55 seconds East 1022.98 feet, thence South 21 degrees, 59 minutes, 29 seconds West 52.54 feet, thence South 01 degrees, 30 minutes, 26 seconds, East 249.79 feet to a point on the South line of said Southwest Quarter (SW/4) Section, thence South 89 degrees, 08 minutes, 00 seconds, West 480.16 feet to the point of beginning, except that part in streets and roads, commonly known as 14038 Southeast Vermont Road, Kincaid, KS 66039 (the "Property") to satisfy the judgment in the above-entitled case. The sale is to be made without appraisal and subject to the redemption period as provided by law, and further subject to the approval of the Court. For more information, visit www.Southlaw.com

Case No. 15CV46
Court Number:
Pursuant to K.S.A. Chapter 60

Notice Of Sale
Under and by virtue of an Order of Sale issued to me by the Clerk of the District Court of Anderson County, Kansas, the undersigned Sheriff of Anderson County, Kansas, will offer for sale at public auction and sell to the highest bidder for cash in hand, at the West Door of the Courthouse at Garnett, Anderson County, Kansas, on December 1, 2016, at 10:00 AM, the following real estate:

Beginning at the Southwest corner of the Southwest Quarter (SW/4) of Section Twenty-eight (28), Township Twenty-two (22) South, Range Twenty-one (21) East of the Sixth Principal Meridian, Anderson County, Kansas, thence North along the West line of said Southwest Quarter (SW/4) Section, 1773.96 feet, thence North 89 degrees, 29 minutes, 12 seconds East 683.57 feet, thence South 26 degrees, 44 minutes, 26 seconds West 506.26 feet, thence South 02 degrees, 05 minutes, 55 seconds East 1022.98 feet, thence South 21 degrees, 59 minutes, 29 seconds West 52.54 feet, thence South 01 degrees, 30 minutes, 26 seconds, East 249.79 feet to a point on the South line of said Southwest Quarter (SW/4)

Vernon L Valentine, Sheriff
Anderson County, Kansas

Prepared By:
SouthLaw, P.C.
Blair T. Gisi (KS #24096)
245 N. Waco, Suite 410
Wichita, KS 67202
(316) 684-7733
(316) 684-7766 (Fax)
Attorneys for Plaintiff
(78464)

nv813

ACHS to present 'Beauty and the Beast. Really'

Anderson County High School opens its theatrical season this year with Beauty and the Beast. Really. by Rick Abbot. Not to be confused with Disney's Beauty and the Beast, this version takes a different spin on the story. It is an entirely hilarious romp for the whole family to enjoy.

Being beautiful is a gift that Beauty (Bethany Powls) must live with. And everyone else around her. Her conceit and selfishness leave her stepmother, Lula (Jenna Schmit) and stepmother, Holga

(Grace Urquhart) on the verge of craziness. Throw in Lula's old boyfriend, Beau (Nate Gainer), who is now Beauty's beau, and a not-so-bright father (Adam Kropf), and you only add to the hilarious twisted tale as old as time. Even more fun is the addition of Harry (Owen Lutz), a theatrical entrepreneur and Maxine (Becky Kropf), a hopelessly inept tap dancer whose thankless job is to distract the audience during the scene changes. Yes, there is a cursed beast who will remain

hideous unless he receives a kiss from the loveliest lady in the land. But will Beauty do it? Will the kiss work if she does do it? Or will the Beast just pine away and die? Will the end of the third day see doom and destruction or a typical happy ending? How in the world will this story turn out? You'll have to attend to find out!

Cost of admission is \$5.00 for adults and \$4.00 for students. It begins at 7:00 p.m., Friday, November 11, and Saturday, November 12, at the ACHS Auditorium.

Notice to settle Brayton estate

(First published in The Anderson County Review, Tuesday, November 8, 2016)

IN THE DISTRICT COURT OF ANDERSON COUNTY, KANSAS

In the Matter of the Estate of
RODNEY L. BRAYTON, deceased

Case No. 16 PR 32
Petition Pursuant to K.S.A. Chapter 59

NOTICE OF HEARING

THE STATE OF KANSAS TO ALL PERSONS CONCERNED:

You are hereby notified that a Petition has been filed in this Court by Miles Brayton, "petitioner" herein, praying:

Descent be determined of the following described real estate situated in Anderson County, Kansas:

Beginning at a point in the center of the South end of Cedar Street in Garnett, this point being 1351.6 feet North and 1481 feet West of the Southeast corner of Section Thirty, Township Twenty (20) South, Range Twenty (20) East of the Sixth Principal Meridian, thence South 229.5 feet, thence West 193.3 feet,

thence North 213.3 feet, thence East 165.5 feet, thence North 16 feet, thence East 40 feet to the place of beginning; also described as Lot One (1), Block One (1) in Meliza Addition to the City of Garnett.

and that such property owned by the decedent at the time of death be assigned pursuant to the laws of intestate succession.

You are required to file your written defenses thereto on or before November 30, 2016, at 9:00 o'clock a.m. in the City of Garnett, Anderson County, Kansas, at which time and place the cause will be heard. Should you fail therein, judgment and decree will be entered in due course upon the Petition.

/s/ Jacob R. Pugh
Jacob R. Pugh, Petitioner

Prepared and Submitted by:
/s/ Jacob R. Pugh
Jacob R. Pugh #22661
PUGH & PUGH Attorneys at Law, P.A.
625 Lincoln Avenue
P.O. Box 138
Wamego, Kansas 66547
Phone: (785) 456-9377
Fax: (785) 456-8581
nv113

Notice for transportation assistance for aging council

(Published in The Anderson County Review, Tuesday, November 8, 2016)

PUBLIC NOTICE FOR OPERATING ONLY
(5311, 5316 & 5317)

Anderson County Council on Aging and General Public Transportation is submitting an application for operating assistance for transportation under the U.S.C. 49-5311 (Rural

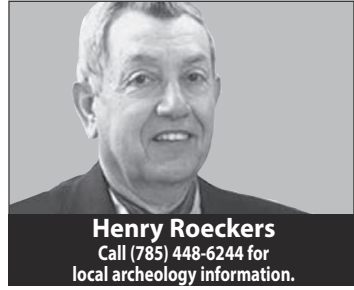
Public Transportation) of the Federal Transit Act. The application will be for operating funds to help provide public transportation services in the area. Written comments and questions in regard to this application are encouraged and will be accepted until November 15, 2016, and should be sent to: Patty Ramsey, Program Manager, PO Box 165, Garnett, KS 66032.

nv813

Fall Fling activities begin in Council Grove

As promised, this week I want to share my adventures of attending the 2016 Fall Fling held in Council Grove, KS, at the Kaw Indian Mission on 21-22-23 October.

DIGGING UP THE PAST



Henry Roeckers
Call (785) 448-6244 for local archeology information.

21 October 2016
I left our home in Garnett at 8:30 am, the temperature was 39 degrees. After traveling 92.7 miles I arrived at my destination at 10:30 am. While traveling along I had two large doe deer cross in front of me and I saw one lone wild turkey feeding along the edge of a newly harvested soybean field.

following artifacts: A very nice old brass button, with its wire shank still firmly attached; brass tent or canvas grommets; various size chain links; a couple of old hand forged tools; a few coins and lots of square nails.

At 5 p.m. I checked into the Prairie Lodge Motel and received my key. There were 21 of us KAA members staying at this lodge. My single room cabin was very clean, quiet and comfortable.

Approximately 7 p.m., 16 of us met for dinner at a local Mexican Restaurant. The food and service were both very good. It was said at dinner, that there were 49 people in attendance at this year's Fall Fling, which should break the record of 46 attending this annual event.

We are all looking forward to tomorrow being a great discovery day!
(To be Continued)

At 12:30 pm we gathered as a group and everyone received a "Welcome" and a brief orientation on what our project consisted of and what we would be assigned to do, by our Director of this Project, Archaeologist Tricia Waggoner of Topeka, Ks. I was assigned to the metal detecting team, with Mo Floyd from Haysville, , KS, as our Crew Leader.

After laying out detection rope guide lines, six of us metal detector operators started conducting metal detection surveys. Each of us had our own target flagger and digger and as a team we also had a photographer/recorder assigned.

Only detecting a couple of hours today, we still found the

HAUSER...

15-year-old Hughes, who pointed out the school just a block or so away. Days later, he met the man again at school.

"I had no idea he was going to be my coach," Hughes said. "We remained friends ever since."

Hauser started as an assistant coach and was named head coach in 1969. He compiled winning football seasons each of the next seven years. He was named "Tri-Valley Coach of the Year" twice during his tenure.

Roger Brummel, who graduated from Garnett High School in 1977, said Hauser was instrumental in pointing him toward his future path.

"He had a big impression on a lot of guys That's vital when you're young and trying to figure out which end is up," Brummel said. "He was very motivational, very well-spoken."

It was Hauser who encouraged Brummel to pursue an education beyond high school. Brummel knew his future career included the family business, but Hauser insisted he needed to further his education. And it was at college where Brummel met his future wife, Donna.

"He was a big part of my life," Brummel said.

Like Hughes, Brummel remained friends with Hauser throughout his life. They took golf trips together and attended Chiefs football games.

Despite his success as a coach, Hauser left the education field and began working as an agent at State Farm in Iola in 1978. It was Hughes' father who hired him, When Hughes' father retired as manager of the State Farm office in 1981, Hauser took over the position. And it was Hauser who hired Charlie Hughes to work at State Farm in 1993.

"We've been connected all these years," Hughes said.

Hauser stayed in touch with many people he taught, coached and knew from Anderson County, Hughes said. He left a lasting imprint on many lives.

"I don't think kids realize the impact that coaches and teachers have on them until way later in life," Hughes said. "I can tell you things I do are in large part because of things I was taught or learned playing sports."

Memorial contributions in Hauser's honor can be sent to the Anderson County USD 365 Endowment Association, P.O. Box 16, Greeley KS 66033.

ANDERSON COUNTY BUSINESS DIRECTORY

Check your local area businesses first - keep your local dollars at home!

DCI Digital CONNECTIONS, Inc.
Authorized Dealer
LANIER
DIGITAL COPIERS
COLOR PRINTERS
NETWORK PRINTERS
NETWORK SCANNERS
FACSIMILE

MIKE HERMRECK
Sales & Service

112 E. 11 Coffeyville, KS 67337
Office & Fax (620) 251-1029
digicon@digicon.kscoxmail.com

TRADE WINDS BAR & GRILL
(785) 448-5856
110 W. 5th Ave. • Garnett
Tues. - Thur. • 11 a.m. - 11 p.m.
Fri. & Sat. • 11 a.m. - 2 a.m.
Daily Specials
Lunch Delivery M-F

MONT IDA MEATS
Howard Yoder
Owner - Operator
22468 NW Indiana Rd
Welda, KS 66091
(785) 489-2212

Lyle's CARPETING SERVICE
448-3720
Carpet - Vinyl
Laminate - Hardwood
Ceramic & VC Tile

AUBURN PHARMACY
(785) 448-6122
429 N. Maple • Next to Country Mart
Reliable, Dependable, Consistent
Always There - Always Caring

BECKMAN MOTORS
North Hwy. 59 in Garnett, KS
Current Rebate \$2000
See dealer for additional rebates.
(785) 448-5441
Genuine Chevrolet

DORNS INSURANCE AGENCY, LLC
111 E. 4th Ave.
Garnett
(785) 448-2284
Patriots Bank Bldg.
Princeton
(785) 937-2269

Jo Wolken E.A., A.T.A.
IRA's
Mutual Funds
Investments
785-448-3056
www.taxtimetaxserviceinc.com
HELPING YOU PLAN
TODAY FOR TOMORROW

Aaron Lizer Agent
FARM BUREAU FINANCIAL SERVICES
Insurance • Investments
120 S. Maple • PO Box 66 • Garnett, KS 66032
Phone: (785) 448-6125 • Cell: (785) 448-4428
Fax: (785) 448-5878

E-Statements & Online Banking
Serving The Area Since 1999
GSSB FDIC
Garnett • Colony • Hepler
Ottawa • Pomona •
St. Paul • Walnut

The TV Shoppe
Continuing to serve you after 31 years.
Hours:
Mon. - Fri. 8:30 a.m. - 10 a.m.
Please call 785-448-5931 after 10 a.m. and leave Tony a message.

KOFO 1220AM
Country Favorites
Anderson County News
Mon-Fri • 8:00am.

On-the-Farm Service • Alignments
WOLKEN TIRE
GARNETT, KS
601 South Oak
Garnett, Kansas
(785) 448-3212
Cooper • Jetzon • Kumho

ASTRO BUILDINGS
Garnett, KS
Everett Miller • (785) 448-6788

Millers Construction, Inc.
Since 1980
Delden Doors & Openers
• We sell & service these brands & more.
Call for quotes & details.
Rodney Miller • (785) 448-3085

Performance Electric
206 North Oak
Ottawa, KS
(785) 242-5748
www.performanceottawa.com
A Complete Commercial and Residential Electrical Service Company
• Rural Electrical Service •
• Transfer Switch & Generator Connection •
• Bucket Truck •
7-Block Certified
Licensed Electricians
Bonded • Insured
Free Estimates
Quality Service for over 20 years
Serving Ottawa, Franklin Co.
and Anderson Co.
Gregg Colbern • Dave Rossman

Now's The Time To Service Your Fans!
Sukup
Grain Handling Equipment
Call Today!
HOMER RIFFEY SERVICE
785-448-2384

Has Your Foundation Let You Down?
Serving your area since 1969
• Waterproofing • Epoxy Injection
• Straighten & Stabilize Walls
• Solid Piering & Leveling
TAYLOR BROTHERS CONSTRUCTION
Foundation Repair • Residential and Commercial
785-242-7477
Ralph Taylor • Ottawa, KS

To advertise in this directory contact Stacey at 785-448-3121.
The Anderson County Review

The plan of salvation!

In John 14 Jesus says to his apostles, "I am the way and the truth and the life. No one comes to the Father except through me." Jesus gives us here the plan of salvation. Salvation is a free gift for which Christ died once for all.

We live in a performance based world. At an early age we learn that the better our performance is the better the outcome of what we are doing will be. This continues as we enter the workforce and our job security and compensation are based on performance. This is contrary to the teaching of the Bible and leads many people down the wrong path. The path of trying to work or perform their way into heaven, however in Isaiah 55:8-9, God states, "My thoughts are not your thoughts, neither are your ways my ways." If we were able to work or perform our way to heaven how would we know when we had done enough, gave enough or been good enough to be saved? Faith then is the root of salvation. In Romans 1:17, Paul states, "For in the gospel a righteousness from God is revealed, a righteousness that is by faith, from first to last just as it is written: The righteous will live by faith."

If faith is the root of salvation, works are the fruit

WEEKLY DEVOTIONAL

By David Bilderback

of salvation. In James 2:14, James asks: "What good is it, my brothers, if a man claims to have faith but has no deeds?" When we plant a tree we water the roots not the tree itself. The root will produce the leaves and then the fruit. This is the way of faith and works. Faith will produce good works. These will be done out of the heart in a way pleasing to God.

Jesus gives us an invitation in Matthew 11:28-30; "Come to me all you who are weary and heavy laden and I will give you rest. Take my yoke upon you and learn from me, for I am gentle and humble in heart, and you will find rest for your souls. For my yoke is easy and my burden is light." Charles Spurgeon, the great English Preacher made this statement, "Everlasting life is the pillow I will rest my head on." Accept Jesus Christ as your personal Savior today by an act of faith and find the peace Spurgeon is referring to.

David Bilderback: A Ministry on the Holiness of God.

CRAIG...

FROM PAGE 1A

at the bank in 1974, and quickly learned that Craig loved to tell jokes and give people nicknames. Craig was passionate about Kansas State University to the point that he "bled purple," Wilson joked.

Although Wilson wasn't particularly partial to either K-State or the University of Kansas, he soon started a standing bet with Craig. Whenever K-State won a football or basketball game, Wilson paid Craig \$1. If KU won, Craig would pay up. Each kept a board in his office plastered with those dollar bills until Craig retired.

And it was around this time that Craig gave Wilson a nickname, something he would continue to call him throughout the years.

"During one of our discussions, he called me KU Lou. From that point on, he always called me Louie," Wilson recalled. "He had nicknames for everybody."

CD Schulte met Bill Craig and Bill's twin brother, Jim, in third grade, and they would continue to be classmates until high school graduation in 1952. They were the first graduating eighth grade class at Holy Angels Catholic School, and sang together in high school and at church. Later, as Schulte established his business and Craig went to work at GSSB, they would become better friends.

Schulte described Craig as a very intelligent man who was dedicated to the local community.

"I appreciated his friendship more than people would know," he said.

Bill Barnes met Craig in the 1960s when they both were members of the now-defunct Garnett Jaycees service organization. He and his wife became friends with Craig and his wife, Barbara, and often played cards together or traveled to Kansas City for shopping trips or attended football games at K-State. When their children were young, they coached opposing flag football teams.

Bill Craig did his best to promote Garnett, Barnes said, but sometimes his bias was obvious even when announcing football games.

"He tried to be fair and impartial, but it was rather hard for him," Barnes said. "You could tell it by the volume of his voice."

And, ever the jokester, sometimes his sense of humor got him in trouble, said Wilson, who ran the scoreboard during Bulldog football games. At a football game during a period of time when the Bulldogs football team struggled, Craig simply gave up calling the plays on the field and instead gave a play-by-play broadcast of a Royals game instead.

"He got in a bit of trouble for that," Wilson said. "There are

a lot of stories like that, but not many that can be printed."

Craig was born Dec. 3, 1934, at Garnett. He attended Kansas State University, where he played football and developed a lifelong love for the Wildcats. Bill later graduated from Emporia State University. He was a United States Army veteran, having served in special services at Fort Riley, Kansas.

He married Barbara Ulse on October 17, 1959 at Holy Angels Church, Garnett. They were married for 58 years until his passing. They had two children, Todd and Michelle "Mitch".

Funeral services will be at 10:30 a.m. Friday, Nov. 11, at Holy Angels Church, Garnett.

An obituary is published on page 3A.



DIY SUPPLY
YOUR HOME & FARM STORE
2204 S. Princeton Circle
Ottawa, KS 66067
(785) 242-8200



Annual Rotary Pancake Feed



November 8th, 2016
Noon: 11:00 - 1:00 Evening: 5:00 - 7:00
\$6.00 for Adults and \$3.00 for Children
Contact any Rotarian for tickets or purchase your tickets at the door.
Located in the basement of the Methodist Church
205 S Oak Street, Garnett, KS 66032
Help Support Local Projects


Duplicate bridge played

Steve Brodmerkle and Anita Dennis edged Dave Leitch and Patty Barr by a point for first at the duplicate match November 2nd. Tom Peavler and Mary

Margaret Thomas came in third.

The Garnett Duplicate Bridge Club meets Wednesdays at 1:00 at the Garnett Inn.

You've Got A Lot of Nerve(s)!
An inflamed or tense spine will influence the functioning of your nervous system, causing pain, illness or disease. Chiropractic care can help you maintain your health and wellness.
Don't wait for pain to tell you there's a problem. Come see what we can do for you.
Dr. Glenn D. Bauman-Chiropractic Physician
805 N. Maple (Inside Bauman's) • Garnett
785-448-2422 • Fax 785-448-2427
M/W/F 8:30 a.m. - 5:30 p.m.



Anderson County Area Religious Services Directory

BECKMAN MOTORS
North Hwy. 59 in Garnett, KS • (785) 448-5441



www.beckmanmotorsinc.com

The Anderson County **Review**
GARNETT PUBLISHING, INC
112 W. SIXTH AVE., GARNETT
(785) 448-3121

www.leroycoop.coop



LeRoy Toll Free 1-888-964-2225
LeRoy Tire Shop Toll Free 1-888-964-2288
Westphalia Toll Free 1-877-489-2521
Westphalia Tire Shop (785) 489-2216
Gridley Toll Free 1-877-836-2860

Elder Planning Specialists

THE SCHULTE AGENCY
Annuities Medicare Supplement Long Term Care
Scott D. Schulte CSA (785) 448-6191
114 W. 4th • Garnett

Richmond Healthcare and Rehabilitation Center
340 E. South St.
Richmond, Kansas 66080
(785) 835-6135

COUNTRY MART
Hwy 59 at Hwy 31 • GARNETT

Your only locally-owned bank.



131 E. 4th Ave • PO Box 327 • Garnett, KS
(785) 448-3191

If you would like to advertise your business in this directory, call Stacey at 785-448-3121 or email review@garnett-ks.com

TRINITY BAPTIST CHURCH
Sunday 9am
Wednesday 7:30pm
East 6th & Hwy 169, Garnett, KS
Pastor - Joshua Ford (785) 304-6581

CHURCH OF THE NAZARENE
Sunday School 9am
Morning Worship 10:00am
Evening Worship 6:30pm
Wednesday Service 7pm
(785) 448-3208 258 Park, Garnett, KS
Pastor - Phil Rhoades

LIFE ASSEMBLY OF GOD CHURCH
Sunday School 9:45am
Sunday Worship 11am, 6pm
Wednesday Bible Study 6pm
Park Road, Garnett, KS
(785) 448-3558
Pastors - Glenda & Joe Johnson

TRINITY LUTHERAN CHURCH
Sunday School 9am
Sunday Worship 10am
Bible Study - Wednesday 7pm
(785) 448-6930
Hwy 31 & Grant, Garnett, KS

KINCAID SELMA UNITED METHODIST CHURCH
Worship 9 am
Sunday School 10:15 a.m.
709 E. 5th St., Kincaid, KS
Pastor - Bill Nelson
Church Office (620) 439-5773

ST. TERESE CATHOLIC CHURCH
Worship Service Saturday 5pm
Richmond, KS
Fr. Gerald Williams
(785) 835-6273

NORTHCOTT CHURCH
Sunday Morning Bible Study 9:28 am
Sunday Worship 10:28 am
Children's Church 10:30 am
Wed. Evening Bible Study 6:28 pm
12425 SW Barton Rd., Colony, KS 66015
Pastor - Mike Farran

FIRST BAPTIST CHURCH
Sunday School 9:30am, Morning Svc. 10:30am
Evening Svc. 6pm, Youth Mtg. 7pm
Wednesday Prayer Meeting 6:30pm
Transportation - Call before 8:30
(785) 448-5749
417 South Walnut, Garnett, KS
Pastor - Ron Jones

BEACON OF TRUTH
Saturday Sabbath Worship 9:30am
Saturday Evening Service 6pm
(except 4th Saturday)
Wednesday Evening Prayer Svc. 7:00pm
Hwy 59 & Allen Rd., Richmond, KS
(785) 229-5172
Pastor - Reuben Esh

COLONY CHRISTIAN CHURCH
Cross Training 9:45am
Sunday Worship 10:45am
306 Maple, Colony, KS 66015
(620) 852-3200
Pastor - Andrew Zoll

FIRST CHRISTIAN CHURCH
www.fccgarnett.org
Early Worship 8am
Sunday School (All Ages) 9:15am
Second Worship Service 10:30am
Children's Church 10am
Nursery Provided
Second & Walnut, Garnett, KS
(785) 448-3452
Pastor Chris Goetz
Children & Youth Pastor - Brett Hartman

COLONY COMMUNITY CHURCH
Sunday Worship 9:30am
Sunday School 10:30am
Risen & Rockin' Sunday School Service 10:35am
(620) 852-3237
Colony, KS 66015
Pastor - Steve Bubna

FIRST BAPTIST CHURCH KINCAID
Sunday School 9:30am
Church 10:45am, Eve Worship 7pm
Wednesday Bible Study 7pm
3rd & Osage, Kincaid, KS
(620) 439-5311
Pastor - David Hill

UNITED METHODIST CHURCH
Sunday School 9:15am
Sunday Worship 10:30am
Bible Study Wed. 10am/Thurs 7pm
Chancel Bells Wed 6pm
Chancel Choir Sun 9am
Jr. & Sr. UMYF Sundays
U.M. Women 1st Wednesday
(785) 448-6833
2nd & Oak, Garnett, KS
Reverend - Bill Driver

UNITED METHODIST CHURCH
Sunday School (All Ages) 9:45am
Sunday Morning Worship 11:00am
116 N. Kallock, Richmond, KS
(785) 835-6235
Pastor - Butch Ritter

WELDA UNITED METHODIST CHURCH
Sunday Church School 9:45am
Church Services & Children's Church 11am
Nursery Available
(785) 448-2358
Welda, KS
Pastor - Bill Nelson

GREELEY UNITED METHODIST CHURCH
Morning Worship 9am
Bible Study (Teens, Adults) 10am
Sunday School (Children) 10am
204 N. Main, PO Box 37, Greeley, KS 66033
(913) 755-2225
Pastor - Bill Driver

MONT IDA CHURCH OF THE BROTHERS
Sunday School 9:30am
Church 10:40am
(785) 448-3947
1300 & Broomall Rd, Welda, KS 66091
Garnett - 7th St, W 7 miles, S 3 miles
Pastor - Vernon Yoder

ST. JOHNS CATHOLIC CHURCH
Mass Sunday 8am
Greeley, KS
(785) 448-3846
Fr. Matthew Schifflbein

KINGDOM HALL OF JEHOVAH'S WITNESSES
Sunday Public Meeting 10am
Sunday Watchtower Study 10:50am
Tuesday Ministry School 7:30pm
Tuesday Service Meeting 8:20pm
Thursday Congregation Book Study 8pm
704 Westgate - Garnett, KS
(785) 448-6755

HOLY ANGELS CATHOLIC CHURCH
Mass: Saturday 5:30pm, Sunday 10am
(785) 448-3846
514 E. 4th, Garnett, KS
Fr. Matthew Schifflbein

ST. BONIFACE CATHOLIC CHURCH
Sunday Worship 9am
(785) 835-6273
Scipio, KS
Fr. Gerald Williams

ST. TERESA CATHOLIC CHURCH
Westphalia, KS
Mass: Sunday 8:30am
Fr. Quentin Schmitz
(620) 364-2416

NEW LIFE BAPTIST CHURCH
Sunday School 10am
Sunday Worship 11am, 1:30pm
705 S. Westgate (end of 7th St.)
Garnett, KS
(785) 204-1769
Pastor - Chadd Lemaster

ST. PATRICK'S CATHOLIC CHURCH
Emerald (Hwy 31 West of Harris, KS)
Mass: Saturday 5pm
Fr. Quentin Schmitz
(620) 364-2416

UNITED BROTHERS IN CHRIST
Sunday School 9:30am
Worship Service 10:30am
2nd & Pine, Garnett, KS
Pastor - Cody Knapik

COLONY UNITED METHODIST CHURCH
Church Services 9:30am
Colony, KS
Parsonage (620) 852-3103
Church Office (620) 852-3106
Pastor - Dorothy Welch

TRUE HOPE COMMUNITY CHURCH
Worship Gathering Sunday 6:30pm
1020 S. Westgate Rd.
Garnett, KS
(785) 409-3595
truehopecommunitychurch@gmail.com
Pastor - Tony Thornton

For additions, subtractions or changes to your church information, a church official may contact the Review at (785) 448-3121.

If you would like to advertise your business in this directory, call Stacey at 785-448-3121 or email review@garnett-ks.com

THE TRADING POST
25,000 customers read us EVERY WEEK just for your ads!
(785) 842-6440 • (800) 683-4505
ads@tradingpostdeals.com

KOFO 1220 AM
Anderson County News
Mon - Fri 8:00am
Country Favorites

Wilson Chiropractic Clinic
Lynn A. Wilson D.C., P.A.
Treatment For Your Back & Joint Pain
Sports, Auto and Work Injury Care
414 W. First • Garnett
(785) 448-6151

HOMETOWN HEATING & COOLING, LLC
HOME COMFORT SPECIALIST
Heating & Air Conditioning
(785) 448-3235
519 W. First Ave. • Garnett

SONIC
Hwy 59 in Garnett, KS
(785) 448-6393 or (785) 448-6494
Call-ins Welcome!

Serving The Area Since 1899
GSSB FDIC
GARNETT STATE SERVICE BANK
Garnett • Colony • Hepler • Ottawa • Pomona • St. Paul • Walnut

The Anderson County **Review**
GARNETT PUBLISHING, INC
112 W. SIXTH AVE., GARNETT
(785) 448-3121

FOR RENT

Country living. One story house on acreage with attached garage. Two bedroom, unfinished basement. 30260 Tennessee Road, Greeley, KS. Call 515-480-9125 for appointment for showing. oc25t4*

REAL ESTATE

Newly listed: Nice 3 BR home on 3/4 acre---EDGE of Lecompton! Do you like to sit on a big porch and listen to birds instead of neighbors? Do you like to grow your own food? If so, this home could be for you. Located on the edge of Lecompton on 3/4 acre, this home features 3 BR, 2 bath, big front porch, many vegetable gardens, flower gardens, fruit trees, etc. Home also has a wood stove in addition to Central heat/air. Live the Self Sustained Lifestyle you have been dreaming about!! \$132,000 Contact Darrell Mooney at Pia Friend Realty. 785-393-3957. More pictures at www.piafriend.com **ap26**

Linwood, Kansas, 2 - residential building lots. 60' x 120' downtown cul-de-sac with specials paid. Walkout lots back up to city park \$6,000 each or both lots for \$10,000. 785 843-7007 or morley702@gmail.com *sp27*

Owner will finance - 160 acres. Will divide down to 40 acres. Lots of timber, ponds, creek, deer, turkey and quail. (913) 669-1873. *oc25*

REAL ESTATE

For sale by owner - 14.2 acres, wooded, 2 water meters, electricity, fruit trees, metal barn with concrete floor (24x40 with 10x12 overhead door on front side and sliding door on side). Hay shed, misc. buildings, small pond and spring. (785) 615-1413 after 1pm \$89,000. *ag16*

Built in 1901 - by the town Banker, this 3-4 bedroom, 3 bath Victorian is located at 906 Liberty in charming Oskaloosa. Wrap around porch, new kitchen, new baths, new siding, pcket dors, stained glass windows, original woodwork, auxiliary wood furnace, full dry basement, fireplace, garage and much more. Home has been renovated from top to bottom in the last 8 years. 30 minutes to Lawrence and Topeka. Don't miss this chance of a lifetime to own this timeless beauty! See pictures at www.piafriend.com. Darrell Mooney, Pia Friend Realty, (785) 393-3957. **ap12**

Johnathan Edgecomb • (785) 448-3899
In Business Since 1997
EDGECOMB FLOORING
SALES & INSTALLATION
FREE in-home consultation with our MOBILE SHOWROOM!
SAVE 40% off regular retail pricing on name brand flooring
Check out our Monthly Specials
CARPET • TILE • VINYL
HARDWOODS • LAMINATE

HELP WANTED

If you're looking for a job, we need responsible, honest oil-field workers to pull wells. Full or part time. Please call 405-641-6538 or 405-810-0900. nvt12

Ag advertising sales consultant in Kansas. Sell to Ag producers using print and digital media. Sales experience required. Agricultural background helpful. Travel with occasional overnights. Work from home, internet service required. Pay includes base + commission, benefits. Travel and business expense reimbursement. Apply at www.midwestmessenger.com/workhere.

CLICK
www.garnettrealestate.com
HERE!

Benjamin Realty
Sherry Benjamin, Broker
Land • Homes • Commercial
201 N. Maple
Garnett, KS 66032
benjaminrealty@earthlink.net
Office: (785) 448-2550
Home: (785) 241-0532
Cell: (785) 304-2029

Property Source, LLC
913-884-4500
YOUR SOURCE FOR GREAT INVESTMENTS!
LAND-FARMS
Investment Property
RESIDENTIAL

UNABLE TO WORK? • DENIED BENEFITS? • WE CAN HELP!
SOCIAL SECURITY DISABILITY
BILL GORDON & ASSOCIATES
"I could not be happier about the job performance of BGA. They have proven that they are there to help unfortunate people who are in need of a helping hand. America should be proud to have them represent those in need. I would recommend them to anyone." -Gil B.
✓ Applications/Hearings/Appeals
✓ Immediate Access to Experienced Personnel
✓ We Strive For Quick Claim Approval
✓ Free Consultation
Call for an Immediate Evaluation **(800) 957-4820**
Bill Gordon & Associates, a nationwide practice, represents clients before the Social Security Administration. Member of the TX & NM Bar Associations. Mail: 1420 NW St Washington D.C. Office: Broward County, FL. Services may be provided by associated attorneys licensed in other states.

LAND AUCTION

161.1± Acres • Anderson County, Kansas

Working Together to
85
Continue Your Legacy

Friday, December 2, at 10:00 AM
at the Fire House • Harris, Kansas
• Highly productive cropland • Immediate possession at closing!

For additional information, contact:
Greg Knedlik, AFM/Agent
Paola, Kansas
(913) 294-2829 or (785) 541-1076
GKnedlik@FarmersNational.com
www.FarmersNational.com/GregKnedlik

www.FarmersNational.com
Real Estate Sales • Auctions • Farm and Ranch Management • Appraisals
Insurance • Consultations • Oil and Gas Management • Forest Resource Management
National Hunting Leases • Lake Management • FNC Ag Stock

AGRICULTURE | EQUESTRIAN | GARAGE | COMMERCIAL

The Difference is in the Details
All steel is not created equally. Morton's exclusive Hi-Rib Steel is the industry's toughest and outlasts all others.
• .019" thick/26-gauge commercial quality steel
• Hi-Rib™ steel is 25% thicker than panels used by most builders
• Up to 57% more load pressure versus other builders' panels
• 1" tall major rib spaced on 12" centers
• Roll-formed at Morton plants & not purchased from outside suppliers
©2014 Morton Buildings, Inc. A listing of GC licenses available at mortonbuildings.com/licenses.
Patented product used with permission of Perma-Column, Inc. Ref Code 043.
Eight offices serving Kansas
800-447-7436
mortonbuildings.com

HELP WANTED

CDL A Drivers: Mid Central-South Regional. Run between Nebraska and Texas. Stay off both coasts! Home weekends. 2,800 miles/week. Be home Thanksgiving and Christmas. Fremont Contract Carriers, 866-641-6914 or visit www.fcc-inc.com

Convoy Systems is hiring Class A drivers to run from Kansas City to the west coast. Home Weekly! Great Benefits! www.convoy.com Call Tina ext. 301 or Lori ext. 303 1-800-926-6869.

Service 1st Cleaning
Carpet & Upholstery
Cleaning
(913) 755-4562

SERVICES

Printing: Business cards, custom envelopes, statements, forms customized to your specific needs; flyers to promote your business or event. Custom rubber stamps, printed balloons, pens, custom wall or desk plaques. 4 color brochures, 4 color flyers or cards printed and direct mailed to your most likely customers. Anderson County's full-service printer for 150 years, Garnett Publishing, Inc., 112 W. 6th in Garnett. (785) 448-3121, admin@garnett-ks.com. Call for a quote today. fb02tfn

Bauman's Pasture Maintenance
Helping local farmers since 1993. Pasture clearing, fencing, rough terrain mowing (incl. dams), hole drilling - dirt or rock.
Joseph Bauman (785) 489-2416

SERVICES

Rytter Hardwood Floors
MASTER CARPENTER
Install, sand & finish, old & new.
(913) 594-2495

Dale's Electrical Service
Richmond, KS
Residential & Light Commercial
785-418-6050

LOCALLY OWNED
You're reading the only one that is!
Subscribe Today
(785) 448-3121

FARM & AG

American Walnut - buying standing timber. Must have 25 or more trees. Call (916) 232-6781 in St. Joseph for details. dc8tf

Our Hunters will Pay Top \$\$\$
To hunt your land. Call for a Free Base Camp Leasing info packet & Quote. 1-866-309-1507 www.BaseCampLeasing.com

Make it grow!

Your wallet that is. Ag products and services sell when they're listed here. Call the Review today to place your ad. (785) 448-3121

MAKE MONEY USE THE CLASSIFIEDS!!

Finding Senior Housing can be complex, but it doesn't have to be.



Call A Place for Mom. Our Advisors are trusted, local experts who can help you understand your options. Since 2000, we've helped over one million families find senior living solutions that meet their unique needs.

(800) 735-9914 aPlaceforMom.

A Place for Mom is the nation's largest senior living referral information service. We do not own, operate, endorse or recommend any senior living community. We are paid by partner communities, so our services are completely free to families.

\$4,000 CASH

Newspaper sponsored
Local shopping survey
Enter to win now, go to:
www.pulsepoll.com

SF Farms Inc. Female Sale
NEW SALE DAY!!! WILL BE SATURDAY INSTEAD OF SUNDAY!
Saturday, November 12, 2016 • High Noon (12 p.m.)
Complimentary meal at 11:00 a.m.

Over 60 head: Fall and Spring calving cows & heifers, open heifers, and select bulls.
Cow Families:
Lucy, Queen Ruth & Nosegay French
Catalog available online: www.sffarms.org



ANDERSON COUNTY SALES COMPANY

N. Hwy 59 • Garnett, KS

S F Farms, Inc. • 785-937-2433 office
785-418-1986 Jodi • 785-418-0895 Stephen
3582 John Brown Road • Princeton, KS 66078
www.sffarms.org • froggattefarms@hotmail.com

CITY OF TULSA AUCTION

Sat., Nov. 19, 2016 | STARTS @ 9:32 A.M.
Location: 108 N. Trenton | Tulsa, OK

BACKHOE,TRACTORS, TRAILERS, VEHICLES, FORKLIFTS, DUMP TRUCKS, GATORS, MOBILE OFFICE & GENERATORS, TIRE MACHINES, SHOP TOOLS, ELECTRONICS, SWORDS, JEWELRY, DESIGNER BAGS/ CLOTHING, LIGHT & SOUND EQUIPMENT, OFFICE SUPPLIES/FURNITURE & MORE
RUNNING 3 AUCTION RINGS!

Directions: If coming from the East I-244: Take Utica (Exit 7). Turn right onto Utica and go 3 blocks and turn left to auction site. If coming from US-75 North or I-44 East take I-244 east, then take Utica (Exit 7) and turn left onto Utica. Go 3 blocks and turn left to auction site. If coming from US-75 South, take I-244 east then take Utica (Exit 7) and turn left onto Utica. Go 3 blocks and turn left to auction site. Watch for auction signs.

Auctioneer's Note: Selling City Equipment, Vehicles, Confiscated Items and City Surplus to the highest auction bidder. Come register and preview on Friday, Nov 18th from 9 am until 4 pm. The gate will reopen on Saturday morning at 7:30am. We will be running 3 AUCTION RINGS ALL DAY so bring your friends. Assistance loading available day of auction. Additional loading days: Mon. Nov 21st-Wed., Nov 23rd 7:30 AM until 3:00 PM. Assistance loading available day of sale only. Please read all terms and conditions of this auction! Due to insurance restrictions no person under 16 years of age will be admitted. Buyers will be required to sign City of Tulsa's Terms and Conditions before getting a buyer's number. All payments will be made to City of Tulsa. All titles will be assigned to the buyer's name on your invoice. Bring your TAX EXEMPT CARDS FOR PROOF OF TAX STATUS.

Terms: All Sales AS IS. Cash, MasterCard, Visa, or Check with Bank Letter. All purchases must be paid day of auction. Sales Tax will apply unless you show your tax exemption card. Despite our efforts to avoid withdrawal of items from the sale list after they are advertised, it is sometimes necessary for the City of Tulsa to do so in order to fulfill certain responsibilities to its citizens. See complete terms at www.chuppsauction.com.

For full item list, more info & pictures visit www.ChuppsAuction.com

CHUPPS AUCTION CO.

Stan Chupp | (918) 638-1157
Dale Chupp, Realtor | Century 21, NEOKLA (918) 630-0495
E. J. Chupp | (918) 639-8555

DOING WHAT WE SAY SINCE 1935.
SEE FOR YOURSELF.

SIGN-ON BONUSSES — UP TO \$8,000 — AVAILABLE IN YOUR AREA!

Opportunities available in these divisions
VAN | INTERMODAL | DEDICATED | TANKER
Team and Solo | Local, Regional and Over-the-Road

COMPANY DRIVER BENEFITS

\$6,000 tuition reimbursement | Paid orientation and ongoing training
Medical, dental and vision insurance and 401(k) plan

SCHNEIDER schneiderjobs.com
schneiderowneroperators.com
800-44-PRIDE | 800-28-LEASE

Anderson County Hospital, Saint Luke's Health System has jobs available!
Apply online at www.saintlukeshealthsystem.org/jobs

- Certified Nursing Assistant - full time all shifts in Residential Living Center
 - Advanced Practice Provider - full time at Family Care Center
 - EMS Director - full time in EMS
 - Surgical Technologist - part time with potential for full time in Surgical Services
 - Medical Assistant - part time with potential for full time in Specialty Clinic
 - Wound Care Nurse - part time at ACH
 - Physical Therapy Assistant (PTA) - part time as needed in Rehab
 - Occupational Therapy Assistant (COTA) - part time as needed in Rehab
 - AEMT/EMT/Paramedic positions - part time as needed in EMS
 - Other part-time jobs: Nutrition Services Aide, Laundry Associate, Housekeeping Associate, Patient Access Representative (Admitting)
- We Hire Only Non-Tobacco Users. EOE.



YOU CAN HAVE THE BEST LAWN IN TOWN

Your local certified local K-Lawn dealer is fully trained to give you the best lawn in town. Our proprietary lawn chemicals and slow release fertilizers will make your lawn the envy of any neighborhood.

If you don't have a K-Lawn dealer in your area, and feel you have what it takes, we're looking to add a few quality dealers to our network. Call us today at 800-445-9116, or visit us online today at www.k-lawn.com to learn the full story.

Kugler Company
PO Box 1748
McCook, Nebraska 69001
www.k-lawn.com

KLawn

East Kansas Agri-Energy
Fuel for the Future

Production Process Operators

East Kansas Agri-Energy, LLC, an Ethanol/Renewable Diesel manufacturer in Garnett, Kansas is looking for a Production Process Operator. This position will be responsible for various operational duties including operational data collection/entry, product sample collection, quality control laboratory testing, sanitation duties and all other aspects of a process operation. This person must have positive work ethics, display strong motivational skills with the ability to work independently and in a team environment with emphasis on efficiency and safety. This individual must also perform the required duties accurately with attention to detail and the ability to complete all assignments by specified deadlines. Applicants must be high school graduates, have the ability to lift up to 50 lbs, manage multiple tasks and multiple priorities simultaneously, work 12 hour rotating shifts and possess fluent computer skills. Experience in chemistry, hydro-treating processes and experience in a 24 hour continuous manufacturing process is preferred, but not required. Please apply in person at East Kansas Agri-Energy, LLC, 1304 South Main, Garnett, KS 66032. You may also submit a resume with references to Shelly.Newport@ekaellc.com, fax (785) 448-2884 or through our company website at www.ekaellc.com. Applications will be accepted until the position is filled. No phone calls please.

Whaddaya Need?

See the advertisers in our Services section!

It's **EASY** to place your ad! • (785) 448-3121 • (800) 683-4505 • admin@garnett-ks.com

Rates

Up to 20 Words.....\$4.95
Each add'l word.....55¢
(Commercial.....65¢)

BONUS: Add \$2 for 10,000 additional households in Lawrence/Douglas County in *The Trading Post*.

Display Ads, per column inch.....\$8.50
Statewide placement available, Call for details.

Terms

• Cash in advance
• Visa, Mastercard, Discover
• Credit to established accounts

Deadline

Classified Ads: 10am Friday
Display Ads: Noon Thursday
Call or send in your ad:
(785) 448-3121
(800) 683-4505 (out of area)
FAX: (785) 448-6253
EMAIL: admin@garnett-ks.com

Mail:
Garnett Publishing, Inc.
P.O. Box 409
Garnett, KS 66032
Review

AUTOS

I'm here to find you the perfect vehicle.



Scott Stiles
Sales Representative
BECKMAN MOTORS

701 N. Maple • Garnett
Cell 913-731-8900
Bus. 785-448-5441
Toll Free 1-800-385-5441
www.beckmanmotorsinc.com
stantonstiles@hotmail.com

Ever thought about selling your wheels?
Sell them the whole car and offer a discount! Run your ad here 3 times and get the 4th FREE!! Call to place your ad... (785) 448-3121

Happiness is... Enrolling at your local National Winning Dance Studio! Donna's School of Dance now enrolling students 3 & up in Tap, Jazz, Ballet, Lyrical and Clogging, call Donna at 448-3819. nv1t2

Happiness is... VFW Post 6397 breakfast Saturday, Nov. 12, 7 a.m. to 9 a.m. Biscuits and gravy, Belgian waffles, bacon, sausage and eggs. nv8t1

Happiness is... Finding the Lions glasses and aluminum collection located at the north side of the GSSB branch bank on Maple Street/U.S. 59 Highway. nv8t1

Happiness is... celebrating your wedding anniversary with a FREE announcement and photo in the Review. Go to www.garnett-ks.com and click the form under "Submit News." Available FREE 24 hours/day! mc1tf



The family of Henry Wittman would like to thank our relatives and friends who sent food, flowers, cards and gave memorial contributions at the time of his death. Thank you to the ladies of Holy Angels Church who served and prepared such a delicious meal. A special thank you to Reuben and his staff at Feuerborn Funeral Service and to Father David Simpson for the beautiful service. Thank you Sue Hardman and Jane Lickteig for the beautiful music and vocals. We want to thank the V.F.W. for the military service. Also a special thank you to his caregivers Sondra, Martha and Robin for taking such good care of him. We appreciate everyone who helped us.
Hildred and family, Merle, Anita, Chuck, Ed and Bob

MAKE MONEY USE THE CLASSIFIEDS!!

Lewy Body Dementia? Parkinson's Disease Dementia?
Suffer From Visual Hallucinations? Been hearing or seeing things that are not actually present?
You may qualify for a research study that is evaluating the safety and effectiveness of a new investigational medication that may help to reduce the symptoms of Lewy Body Dementia or Parkinson's Disease Dementia if:
• You are aged 50 - 85 years with a diagnosis of Dementia with Lewy Bodies
• You suffer from visual hallucinations that occur on more days than not
• Medications you take have been on a consistent dose for at least 4 weeks
For More Information, Please Contact
Rowe Neurology Institute,
Dr. Vernon Rowe or Leigh Kreshal at (913) 827-4262

SURGERY TECH Jobs in Demand
Apply for our 2 yr. program NOW. Contact Jennifer Cain at 785-248-2837 or email jcain@neosho.edu by December 1st for a January program start. Starting salary range \$37 - \$40K.

DIRECTOR OF NURSING CNA'S
Life Care Center of Burlington
Director of Nursing, full time. CNAs, full & part time. We offer great pay and benefits in a team-oriented environment.
Tracy Bartley
620-364-2117 • 620-364-2013 Fax
601 Cross St. • Burlington, KS 66839
Tracy_Bartley@LCCA.com
LifeCareCareers.com
An Equal Opportunity Employer 77934

Multi-Media Advertising Sales Opportunity
The Miami County Newspapers and Read It Free community shopper are looking for an outgoing, self-motivated, salesperson to take over an established sales territory. Duties include prospecting new accounts and servicing existing accounts to be placed into the Miami County Republic newspaper, which now incorporates the Louisburg Herald and Osawatomie Graphic, as well as The Read It Free community shopper, plus their websites. Position will pay base and commission, 401K and health benefits. Join an experienced team of advertising multi-media consultants to help businesses market their services and products. Sales experience or aptitude essential, but we will train the right person.
Send resume to:
Miami County Republic
c/o Teresa Morrow, Advertising Manager
P.O. Box 389, Paola, KS 66071
or email: teresa.morrow@miconews.com

KANSAS STATEWIDE ADVERTISING
Send your ad to more than 100 Kansas newspapers for as little as \$300. Ask us about other states too.
The Anderson County Review
785-448-3121

NOVEMBER SPECIAL
30x40x10 \$24,000*

PRICE INCLUDES:
• Installation
• WeatherWrap Insulation
• (2) 9x8 Insulated OH Doors
• 3' 9-Lite Entry Door
• 2-3x3 Insulated Windows
• 4' Wainscoting
• 12" Vented Overhang
• 4" Concrete Floor
*Travel charges may apply.
www.qualitystructures.com
800-374-6988
SERVING: Kansas, Iowa, Missouri & Nebraska

INVENTORY REDUCTION SALE!

Jonsered 46" ZTR 22 hp Briggs - Reg. 2,899.....	\$2,599
Jonsered 42" ZTR Fab. Deck 22 hp Briggs - Reg. 3,299.....	\$2,950
Jonsered 48" ZTR Fab. Deck 24 hp Briggs - Reg. 3,499.....	\$3,099
Jonsered 42" Tractor 20 hp Briggs V-twin - Reg. \$1,799.....	\$1,599
Country Clipper Charger 60" Joystick	
Commercial 26.5 hp Kohler EFI - Reg. 9,495.....	\$8,100

Ask about other specials
THIS IS THE SEASON FOR A NEW JONSERED SAW
Jonsered Full Line Servicing Dealer
CALL US FOR A WINTER SERVICE ON ALL YOUR OUTDOOR POWER EQUIPMENT!
Chain Sharpening • Chain Repair
Heck's Small Engine Repair
Westphalia, KS • 785-893-1620
OPEN MON. - FRI. 8 A.M. - 6 P.M.
Sat. By Appt. Closed Sunday

GARAGE SALES
236 N. Spruce - November 5 & November 12, 8am-1pm. Lots of furniture, indoor and out. Lots of misc. nv1t2
Garage Sale Gymboree, Burlington rec Center gym, Friday, Nov. 11, 5:30-8 p.m. Multiple sales under one roof. nv8t1



HAPPY ADS
Happiness is... Having the Review's EagleEye News Drone do aerial photography or videography for your wedding, special event, property survey, promotional video, high-altitude equipment or building inspection, etc. Real-time view from up to 400 feet elevation, up to nearly 1 mile range. Contact the Anderson County Review at (785) 448-3121 for more info. oc11fn

MISCELLANEOUS
12ft Suede Low Profile Gymnastics Balance Beam. Wood core 250 lbs. capacity. Beam does not flex or bend for leaps and jumps. Heavy grade synthetic suede covering with padded top, and curved sides, same as competition beams. \$250 with possible free local delivery. See photos and more info on Lawrence Craigslist under sporting goods or call (785) 448-4437. sp27fn
International Riding Helmet, size Medium with snug adjustment dial. Like new condition with two slight blemishes on top. Never used. Stored for 3 years in closet. \$25. See pics on Lawrence Craigslist or call (785) 448-4437. sp27fn
Lenders offering \$0 down for land owners Roll your New Home and Land Improvements into One Package. Discount National Pricing on Breeze II Doublewide and our 60th Anniversary Singlewide. Trade-ins Welcome!! 866-858-6862
Chronic Pain? Back or joint pain, arthritis? Recent Medicare/health coverage changes may benefit you! Products are little to NO COST, if qualified. FREE Shipping. Accredited Pain Specialists. CALL 1-800-917-3080
A place for mom. The nation's largest senior living referral service. Contact our trusted, local experts today! Our service is FREE/no obligation. CALL 1-800-735-9914
Sawmills from only \$4397.00-Make & save money with your own bandmill- Cut lumber any dimension. In stock ready to ship! FREE Info/DVD: www.NorwoodSawmills.com 1-800-578-1363 Ext.300N
World's Largest Gun Show - November 12 & 13 - Tulsa, OK Fairgrounds. Saturday 8-6, Sunday 8-4. Wanenmacher's Tulsa Arms Show. Free appraisals. Bring your guns! www.TulsaArmsShow.com

PUBLIC REAL ESTATE AUCTION
FRIDAY EVENING, NOV. 18, 2016, @ 6:30 PM
Auction Site: 5 m. N of Westphalia, KS. On blacktop; 1 1/2 m. W on 1600 Rd.; 6/10 m. N on Xeric Ln. (1665 Xeric Ln., Westphalia, KS)
Property site: 3m S of Harris KS, on NW Finney Rd., 3.3m W on NW 1700 Rd. North side
Approx. 76.786 ± survey acres, located on NW 1700 Rd. 73.45 ± good tillable acres, pond, few trees around pond.
TAXES FOR 2016: \$1117.14
TERMS: 10% earnest money deposit required at signing of the Real Estate contract the day of the auction. Balance due in approx. 30 days at closing. Property will sell in its present & existing condition. All inspections must be done prior to auction at BUYERS EXPENSE. Must have financing in order to make a cash purchase. **BROKER & AUCTIONEER ARE REPRESENTING SELLER.** Seller will have 24hrs to accept or reject the highest bid.
IRA EICHMAN - OWNER 785-489-2386
LESTER at EDGECOMB AUCTIONS • 785-594-3507 or 785-766-6074
ART HANCOCK - BROKER • 913-207-4231
EDGECOMB AUCTIONS • 785-594-3507
www.kansasauctions.net/edgecomb
www.edgecombuctions.com

Need holiday cash?
Focus is currently seeking warehouse associates that can perform a variety of job duties and functions in a distribution center in Ottawa, KS!
We are looking for candidates that possess the desire and the ability to work in a fast paced environment!
If you are driven and ready for a new challenge, we want to interview YOU!
Pay up to \$15/hr
plus OVERTIME!
Daylight/Evening/Weekend Shifts Available!
Currently Hiring For:
• Pickers • Order Selectors • Packers
• General Labor • Production Work • Special Projects
All seasonal jobs are in Ottawa, KS!
Apply at
www.workatfocus.com
In person at 1529 N. Davis Rd. Ottawa, KS 66067
Call (785) 832-7000
To schedule a time to come in!

focus workforces
True. Industrial. Talent.™

2%
Did you know junk mail mass mailings have as little as a 2% response rate with customers?
Advertise where people read.
Review
(785) 448-3121

Fire department surprised by refreshments from UMW

Calendar
9-Rural Water Dist. No. 5 board meeting, board office, 8 p.m.; Fire Dept. meeting, fire station, 7 p.m.

School Calendar
10-high school bowl at Oswego, 4 p.m.; middle school basketball at Crest, 5 p.m.; 11-Veterans Day Assembly, 9 a.m.;

Meal Site
9-pork cutlet, sweet potato, Brussel sprouts, roll, bread pudding; 11-Kitchen Closed, Veterans Day; 14-Swiss steak, au gratin potatoes, winter blend veggies, roll, plums. Phone 620-852-3457 for meal reservations.

Christian Church
Scripture presented Oct. 29 was John 21:1-25. Pastor Andrew Zoll's sermon "Feed my Sheep".

Cross training Classes at 9:30 a.m. each Sunday. Worship Service at 10:45. Men's Bible Study-Tuesday, 7 a.m. Nov. 9-Working Wonders CWC at 7 p.m. at the church. Devotions-Bev Wittmer; Refreshments-Cindy McGhee. Nov. 10-Harvest Feast at City Hall Community Room. Nov. 19 -Harvest Feast at the City Hall Community Room. June 26-North America Christian Conference at Kansas City. We would like a big representation from our church. Let Pastor Andrew know if you plan to attend.

UMC
Oct. 29 Scripture at the United Methodist Church was Psalm 119:137-144, Habakkuk 1:1-4, 2: 1-4, 2 Thessalonians 1:1-4, 10-12 and Luke 19:1-10. Pastor Dorothy Welch presented the sermon, "Vertically Challenged".

The November Challenge is Feed a Family (food for Thanksgiving)

COLONY NEWS



Mrs. Morris Luedke
Contact (620) 852-3379 or colonynews@ckt.net with Colony news.

Oldest Couple

Ralph and Evelyn Bunnel, Colony's oldest married couple will observe their 73rd anniversary Nov. 25. Ralph graduated from Colony High School in 1940 and Evelyn Neuenswander in 1941. They have eleven children (all living), 28 grandchildren and 33 great grandchildren.

Cards may be sent to Mr. and Mrs. Ralph Bunnel, 604 E Broad St., PO Box 155, Colony, KS 66015. The couple enjoy visits at their home also.

Fire Dept.

The firemen met for their regular meeting Oct. 26 and were pleasantly surprised when the United Methodist Women brought in refreshments. They very much appreciated their support and encouragement.

Two new members at our Fire Department are Austin Green and Jerry Jones. Richard Buckle and Butch Lytle retired, Sarah McDaniel went to Welda Fire Department, and two others are gone, Tom Buckle and Rick Cerruti left. Luke Decker and KeWade Seabolt recently were certified to dive.

Firemen want to remind everyone that the time change is also time to change your smoke detectors. Daylight Saving time



The Colony Christian Church held a picnic at the Colony Ball Park shelter Sunday evening and many (pictured above) went on a hayrack ride. They passed out a little gift stating "Happy Fall" to people and children they saw out and about as they drove around town. Photo/Allene Luedke

ends Nov. 6. Set your clocks back one hour!!

Fire Department Updated List as of Oct. 27, 2016 is:
Fire Or Medical Emergency-Phone 911

- J. D. Mersman, Emergency Management; Mick Brinkmeyer, Rural Fire Director

- Fire Chief-Eric Seabolt, Assistant Fire Chief-Paul Stephens;

- EMT'S-Jim Atzbach, Matt Bowen, Paula Decker, Jeremy Ellington, Eric Seabolt, Mike Steedley, Paul Stephens, Tim Dietrich

- First Responder-Randy Runnels (Fire Dept. responds to all alarms of each capacity-medical, fire, water, road accidents, etc.)

- Swift Water Rescue-Garry Decker, Paula Decker, Randy Runnels, KEWade Seabolt, Paul Stephens, Luke Decker, Thomas Dietrich, Eric Seabolt
- Dive Team-Paula Decker, Thomas Dietrich, Eric Seabolt, Paul Stephens, Luke Decker, KeWade Seabolt

- Firefighters-Jim Atzbach, Matt Bowen, Garry Decker, Luke Decker, Paula Decker, Thomas Dietrich, Tim Dietrich, Jeremy Ellington, Austin Green, Jerry Jones, Crystal Lyda, Randy Runnels, Eric Seabolt, Ashleen Seabolt, KEWade Seabolt, Mike Steedley, Paul Stephens, Richard Weber

- Treasurer and Training Officer-Garry Decker; Secretary-Paula Decker.

Lions

Al Richardson, president conducted the Oct. 19 meeting with thirteen members answering roll call. Kim Colgin, secretary read the Oct. 5 minutes which were approved and Kenton King gave the treasurer's report.

Business included the casket stand ready for painting, color to match original paint; pirate ship sealed and upgrades are in the planning. Sealing being done by Ron McMullen, Robert Faulkner and Kenton King.

Oct. 31 at 2:45 p.m. was the Halloween celebration at Crest School. Lions Kenton King, Victoria Faulkner, DeDe McMullen, Robert Faulkner and Butch Lytle attended. Treats will be handed out. Gene Anderson and Ron McMullen took the aluminum cans in for recycling.

The drawing for the Ruger American rifle was held. The winner was Kevin Drake of Michigan. The Nov. 16 meeting was voted as pizza night.

Notice on Tri-Ko services

(Published in The Anderson County Review, Tuesday, November 8, 2016)

Tri-Ko, Inc. receives Federal Transit Administration (FTA) operating dollars. This funding is utilized for the purchase of fuel, insurance, and equipment maintenance. This

agency is seeking Kansas Disadvantaged Business Enterprise (DBE) certified companies as potential vendors for these services. Please contact Devon Powell at 913-755-3025 if you are a DBE or are interested in learning more about the DBE program.

nv8t1

YUTZY POST FRAME BUILDINGS & METAL ROOFING

SERVING THE AREA WITH QUALITY BUILT BUILDINGS

CALL US TODAY!!!

(785) 248-1397
Garnett, KS

www.yutzyconstruction.com Licensed & Insured

SAVE THE DATE

46th ANNUAL CHRISTMAS PARADE
Sponsored by the Garnett Area Chamber of Commerce
Saturday, November 26, 2016

6:30 p.m. • Downtown Garnett

"Once Upon a Country Christmas"

Watch our Facebook page and website for more information.
www.garnettchamber.org

Anyone can be in the parade!

Families, reunions, walkers, bikers & of course floats.

Register at the Chamber office, 131 W. 5th Ave. or

online at www.garnettchamber.org

Call 785-448-6767 for more information.

Lighting of the Square Immediately Before Parade Starts.

Garnett Fire Department Chili & Soup Supper 4 p.m. until gone.

Pictures with Santa at the Fire Department

Immediately Following the Parade.

Santa will have his mailbox with him, bring your letters!

(Mailbox will be moved to the Library after, until Dec. 19th.)



INDIAN WARS • SPANISH-AMERICAN WAR • BANANA WAR • WORLD WAR I • WORLD WAR II • VIETNAM WAR • DOMINICAN INTERVENTION • TEHPA RESCUE • LEBANON • CUBA • PANAMA • GULF WAR • BOSNIA • KOSOVO • TERROR • AFGHANISTAN • IRAQ WAR • 9/11 • STATE (ISIS) • COLONIAL WARS • WAR OF INDEPENDENCE • AMERICAN CIVIL WAR • INDIAN WARS • SPANISH-AMERICAN WAR • BANANA WAR • WORLD WAR I • WORLD WAR II • VIETNAM WAR • DOMINICAN INTERVENTION • TEHPA RESCUE • LEBANON • CUBA • PANAMA • GULF WAR • BOSNIA • KOSOVO • TERROR • AFGHANISTAN • IRAQ WAR • 9/11 • STATE (ISIS) • COLONIAL WARS • WAR OF INDEPENDENCE • AMERICAN CIVIL WAR • INDIAN WARS • SPANISH-AMERICAN WAR • BANANA WAR • WORLD WAR I • WORLD WAR II • VIETNAM WAR • DOMINICAN INTERVENTION • TEHPA RESCUE • LEBANON • CUBA • PANAMA • GULF WAR • BOSNIA • KOSOVO • TERROR • AFGHANISTAN • IRAQ WAR • 9/11 • STATE (ISIS) • COLONIAL WARS • WAR OF INDEPENDENCE • AMERICAN CIVIL WAR • INDIAN WARS • SPANISH-AMERICAN WAR • BANANA WAR • WORLD WAR I • WORLD WAR II • VIETNAM WAR • DOMINICAN INTERVENTION • TEHPA RESCUE • LEBANON • CUBA • PANAMA • GULF WAR • BOSNIA • KOSOVO • TERROR • AFGHANISTAN • IRAQ WAR • 9/11 • STATE (ISIS) • COLONIAL WARS • WAR OF INDEPENDENCE • AMERICAN CIVIL WAR • INDIAN WARS • SPANISH-AMERICAN WAR • BANANA WAR • WORLD WAR I • WORLD WAR II • VIETNAM WAR • DOMINICAN INTERVENTION • TEHPA RESCUE • LEBANON • CUBA • PANAMA • GULF WAR • BOSNIA • KOSOVO • TERROR • AFGHANISTAN • IRAQ WAR • 9/11 • STATE (ISIS) • COLONIAL WARS • WAR OF INDEPENDENCE • AMERICAN CIVIL WAR • INDIAN WARS • SPANISH-AMERICAN WAR • BANANA WAR • WORLD WAR I • WORLD WAR II • VIETNAM WAR • DOMINICAN INTERVENTION • TEHPA RESCUE • LEBANON • CUBA • PANAMA • GULF WAR • BOSNIA • KOSOVO • TERROR • AFGHANISTAN • IRAQ WAR • 9/11 • STATE (ISIS) • COLONIAL WARS • WAR OF INDEPENDENCE • AMERICAN CIVIL WAR • INDIAN WARS • SPANISH-AMERICAN WAR • BANANA WAR • WORLD WAR I • WORLD WAR II • VIETNAM WAR • DOMINICAN INTERVENTION • TEHPA RESCUE • LEBANON • CUBA • PANAMA • GULF WAR • BOSNIA • KOSOVO • TERROR • AFGHANISTAN • IRAQ WAR • 9/11 • STATE (ISIS) • COLONIAL WARS • WAR OF INDEPENDENCE • AMERICAN CIVIL WAR • INDIAN WARS • SPANISH-AMERICAN WAR • BANANA WAR • WORLD WAR I • WORLD WAR II • VIETNAM WAR • DOMINICAN INTERVENTION • TEHPA RESCUE • LEBANON • CUBA • PANAMA • GULF WAR • BOSNIA • KOSOVO • TERROR • AFGHANISTAN • IRAQ WAR • 9/11 • STATE (ISIS) • COLONIAL WARS • WAR OF INDEPENDENCE • AMERICAN CIVIL WAR • INDIAN WARS • SPANISH-AMERICAN WAR • BANANA WAR • WORLD WAR I • WORLD WAR II • VIETNAM WAR • DOMINICAN INTERVENTION • TEHPA RESCUE • LEBANON • CUBA • PANAMA • GULF WAR • BOSNIA • KOSOVO • TERROR • AFGHANISTAN • IRAQ WAR • 9/11 • STATE (ISIS) • COLONIAL WARS • WAR OF INDEPENDENCE • AMERICAN CIVIL WAR • INDIAN WARS • SPANISH-AMERICAN WAR • BANANA WAR • WORLD WAR I • WORLD WAR II • VIETNAM WAR • DOMINICAN INTERVENTION • TEHPA RESCUE • LEBANON • CUBA • PANAMA • GULF WAR • BOSNIA • KOSOVO • TERROR • AFGHANISTAN • IRAQ WAR • 9/11 • STATE (ISIS) • COLONIAL WARS • WAR OF INDEPENDENCE • AMERICAN CIVIL WAR • INDIAN WARS • SPANISH-AMERICAN WAR • BANANA WAR • WORLD WAR I • WORLD WAR II • VIETNAM WAR • DOMINICAN INTERVENTION • TEHPA RESCUE • LEBANON • CUBA • PANAMA • GULF WAR • BOSNIA • KOSOVO • TERROR • AFGHANISTAN • IRAQ WAR • 9/11 • STATE (ISIS) • COLONIAL WARS • WAR OF INDEPENDENCE • AMERICAN CIVIL WAR • INDIAN WARS • SPANISH-AMERICAN WAR • BANANA WAR • WORLD WAR I • WORLD WAR II • VIETNAM WAR • DOMINICAN INTERVENTION • TEHPA RESCUE • LEBANON • CUBA • PANAMA • GULF WAR • BOSNIA • KOSOVO • TERROR • AFGHANISTAN • IRAQ WAR • 9/11 • STATE (ISIS) • COLONIAL WARS • WAR OF INDEPENDENCE • AMERICAN CIVIL WAR • INDIAN WARS • SPANISH-AMERICAN WAR • BANANA WAR • WORLD WAR I • WORLD WAR II • VIETNAM WAR • DOMINICAN INTERVENTION • TEHPA RESCUE • LEBANON • CUBA • PANAMA • GULF WAR • BOSNIA • KOSOVO • TERROR • AFGHANISTAN • IRAQ WAR • 9/11 • STATE (ISIS) • COLONIAL WARS • WAR OF INDEPENDENCE • AMERICAN CIVIL WAR • INDIAN WARS • SPANISH-AMERICAN WAR • BANANA WAR • WORLD WAR I • WORLD WAR II • VIETNAM WAR • DOMINICAN INTERVENTION • TEHPA RESCUE • LEBANON • CUBA • PANAMA • GULF WAR • BOSNIA • KOSOVO • TERROR • AFGHANISTAN • IRAQ WAR • 9/11 • STATE (ISIS) • COLONIAL WARS • WAR OF INDEPENDENCE • AMERICAN CIVIL WAR • INDIAN WARS • SPANISH-AMERICAN WAR • BANANA WAR • WORLD WAR I • WORLD WAR II • VIETNAM WAR • DOMINICAN INTERVENTION • TEHPA RESCUE • LEBANON • CUBA • PANAMA • GULF WAR • BOSNIA • KOSOVO • TERROR • AFGHANISTAN • IRAQ WAR • 9/11 • STATE (ISIS) • COLONIAL WARS • WAR OF INDEPENDENCE • AMERICAN CIVIL WAR • INDIAN WARS • SPANISH-AMERICAN WAR • BANANA WAR • WORLD WAR I • WORLD WAR II • VIETNAM WAR • DOMINICAN INTERVENTION • TEHPA RESCUE • LEBANON • CUBA • PANAMA • GULF WAR • BOSNIA • KOSOVO • TERROR • AFGHANISTAN • IRAQ WAR • 9/11 • STATE (ISIS) • COLONIAL WARS • WAR OF INDEPENDENCE • AMERICAN CIVIL WAR • INDIAN WARS • SPANISH-AMERICAN WAR • BANANA WAR • WORLD WAR I • WORLD WAR II • VIETNAM WAR • DOMINICAN INTERVENTION • TEHPA RESCUE • LEBANON • CUBA • PANAMA • GULF WAR • BOSNIA • KOSOVO • TERROR • AFGHANISTAN • IRAQ WAR • 9/11 • STATE (ISIS) • COLONIAL WARS • WAR OF INDEPENDENCE • AMERICAN CIVIL WAR • INDIAN WARS • SPANISH-AMERICAN WAR • BANANA WAR • WORLD WAR I • WORLD WAR II • VIETNAM WAR • DOMINICAN INTERVENTION • TEHPA RESCUE • LEBANON • CUBA • PANAMA • GULF WAR • BOSNIA • KOSOVO • TERROR • AFGHANISTAN • IRAQ WAR • 9/11 • STATE (ISIS) • COLONIAL WARS • WAR OF INDEPENDENCE • AMERICAN CIVIL WAR • INDIAN WARS • SPANISH-AMERICAN WAR • BANANA WAR • WORLD WAR I • WORLD WAR II • VIETNAM WAR • DOMINICAN INTERVENTION • TEHPA RESCUE • LEBANON • CUBA • PANAMA • GULF WAR • BOSNIA • KOSOVO • TERROR • AFGHANISTAN • IRAQ WAR • 9/11 • STATE (ISIS) • COLONIAL WARS • WAR OF INDEPENDENCE • AMERICAN CIVIL WAR • INDIAN WARS • SPANISH-AMERICAN WAR • BANANA WAR • WORLD WAR I • WORLD WAR II • VIETNAM WAR • DOMINICAN INTERVENTION • TEHPA RESCUE • LEBANON • CUBA • PANAMA • GULF WAR • BOSNIA • KOSOVO • TERROR • AFGHANISTAN • IRAQ WAR • 9/11 • STATE (ISIS) • COLONIAL WARS • WAR OF INDEPENDENCE • AMERICAN CIVIL WAR • INDIAN WARS • SPANISH-AMERICAN WAR • BANANA WAR • WORLD WAR I • WORLD WAR II • VIETNAM WAR • DOMINICAN INTERVENTION • TEHPA RESCUE • LEBANON • CUBA • PANAMA • GULF WAR • BOSNIA • KOSOVO • TERROR • AFGHANISTAN • IRAQ WAR • 9/11 • STATE (ISIS) • COLONIAL WARS • WAR OF INDEPENDENCE • AMERICAN CIVIL WAR • INDIAN WARS • SPANISH-AMERICAN WAR • BANANA WAR • WORLD WAR I • WORLD WAR II • VIETNAM WAR • DOMINICAN INTERVENTION • TEHPA RESCUE • LEBANON • CUBA • PANAMA • GULF WAR • BOSNIA • KOSOVO • TERROR • AFGHANISTAN • IRAQ WAR • 9/11 • STATE (ISIS) • COLONIAL WARS • WAR OF INDEPENDENCE • AMERICAN CIVIL WAR • INDIAN WARS • SPANISH-AMERICAN WAR • BANANA WAR • WORLD WAR I • WORLD WAR II • VIETNAM WAR • DOMINICAN INTERVENTION • TEHPA RESCUE • LEBANON • CUBA • PANAMA • GULF WAR • BOSNIA • KOSOVO • TERROR • AFGHANISTAN • IRAQ WAR • 9/11 • STATE (ISIS) • COLONIAL WARS • WAR OF INDEPENDENCE • AMERICAN CIVIL WAR • INDIAN WARS • SPANISH-AMERICAN WAR • BANANA WAR • WORLD WAR I • WORLD WAR II • VIETNAM WAR • DOMINICAN INTERVENTION • TEHPA RESCUE • LEBANON • CUBA • PANAMA • GULF WAR • BOSNIA • KOSOVO • TERROR • AFGHANISTAN • IRAQ WAR • 9/11 • STATE (ISIS) • COLONIAL WARS • WAR OF INDEPENDENCE • AMERICAN CIVIL WAR • INDIAN WARS • SPANISH-AMERICAN WAR • BANANA WAR • WORLD WAR I • WORLD WAR II • VIETNAM WAR • DOMINICAN INTERVENTION • TEHPA RESCUE • LEBANON • CUBA • PANAMA • GULF WAR • BOSNIA • KOSOVO • TERROR • AFGHANISTAN • IRAQ WAR • 9/11 • STATE (ISIS) • COLONIAL WARS • WAR OF INDEPENDENCE • AMERICAN CIVIL WAR • INDIAN WARS • SPANISH-AMERICAN WAR • BANANA WAR • WORLD WAR I • WORLD WAR II • VIETNAM WAR • DOMINICAN INTERVENTION • TEHPA RESCUE • LEBANON • CUBA • PANAMA • GULF WAR • BOSNIA • KOSOVO • TERROR • AFGHANISTAN • IRAQ WAR • 9/11 • STATE (ISIS) • COLONIAL WARS • WAR OF INDEPENDENCE • AMERICAN CIVIL WAR • INDIAN WARS • SPANISH-AMERICAN WAR • BANANA WAR • WORLD WAR I • WORLD WAR II • VIETNAM WAR • DOMINICAN INTERVENTION • TEHPA RESCUE • LEBANON • CUBA • PANAMA • GULF WAR • BOSNIA • KOSOVO • TERROR • AFGHANISTAN • IRAQ WAR • 9/11 • STATE (ISIS) • COLONIAL WARS • WAR OF INDEPENDENCE • AMERICAN CIVIL WAR • INDIAN WARS • SPANISH-AMERICAN WAR • BANANA WAR • WORLD WAR I • WORLD WAR II • VIETNAM WAR • DOMINICAN INTERVENTION • TEHPA RESCUE • LEBANON • CUBA • PANAMA • GULF WAR • BOSNIA • KOSOVO • TERROR • AFGHANISTAN • IRAQ WAR • 9/11 • STATE (ISIS) • COLONIAL WARS • WAR OF INDEPENDENCE • AMERICAN CIVIL WAR • INDIAN WARS • SPANISH-AMERICAN WAR • BANANA WAR • WORLD WAR I • WORLD WAR II • VIETNAM WAR • DOMINICAN INTERVENTION • TEHPA RESCUE • LEBANON • CUBA • PANAMA • GULF WAR • BOSNIA • KOSOVO • TERROR • AFGHANISTAN • IRAQ WAR • 9/11 • STATE (ISIS) • COLONIAL WARS • WAR OF INDEPENDENCE • AMERICAN CIVIL WAR • INDIAN WARS • SPANISH-AMERICAN WAR • BANANA WAR • WORLD WAR I • WORLD WAR II • VIETNAM WAR • DOMINICAN INTERVENTION • TEHPA RESCUE • LEBANON • CUBA • PANAMA • GULF WAR • BOSNIA • KOSOVO • TERROR • AFGHANISTAN • IRAQ WAR • 9/11 • STATE (ISIS) • COLONIAL WARS • WAR OF INDEPENDENCE • AMERICAN CIVIL WAR • INDIAN WARS • SPANISH-AMERICAN WAR • BANANA WAR • WORLD WAR I • WORLD WAR II • VIETNAM WAR • DOMINICAN INTERVENTION • TEHPA RESCUE • LEBANON • CUBA • PANAMA • GULF WAR • BOSNIA • KOSOVO • TERROR • AFGHANISTAN • IRAQ WAR • 9/11 • STATE (ISIS) • COLONIAL WARS • WAR OF INDEPENDENCE • AMERICAN CIVIL WAR • INDIAN WARS • SPANISH-AMERICAN WAR • BANANA WAR • WORLD WAR I • WORLD WAR II • VIETNAM WAR • DOMINICAN INTERVENTION • TEHPA RESCUE • LEBANON • CUBA • PANAMA • GULF WAR • BOSNIA • KOSOVO • TERROR • AFGHANISTAN • IRAQ WAR • 9/11 • STATE (ISIS) • COLONIAL WARS • WAR OF INDEPENDENCE • AMERICAN CIVIL WAR • INDIAN WARS • SPANISH-AMERICAN WAR • BANANA WAR • WORLD WAR I • WORLD WAR II • VIETNAM WAR • DOMINICAN INTERVENTION • TEHPA RESCUE • LEBANON • CUBA • PANAMA • GULF WAR • BOSNIA • KOSOVO • TERROR • AFGHANISTAN • IRAQ WAR • 9/11 • STATE (ISIS) • COLONIAL WARS • WAR OF INDEPENDENCE • AMERICAN CIVIL WAR • INDIAN WARS • SPANISH-AMERICAN WAR • BANANA WAR • WORLD WAR I • WORLD WAR II • VIETNAM WAR • DOMINICAN INTERVENTION • TEHPA RESCUE • LEBANON • CUBA • PANAMA • GULF WAR • BOSNIA • KOSOVO • TERROR • AFGHANISTAN • IRAQ WAR • 9/11 • STATE (ISIS) • COLONIAL WARS • WAR OF INDEPENDENCE • AMERICAN CIVIL WAR • INDIAN WARS • SPANISH-AMERICAN WAR • BANANA WAR • WORLD WAR I • WORLD WAR II • VIETNAM WAR • DOMINICAN INTERVENTION • TEHPA RESCUE • LEBANON • CUBA • PANAMA • GULF WAR • BOSNIA • KOSOVO • TERROR • AFGHANISTAN • IRAQ WAR • 9/11 • STATE (ISIS) • COLONIAL WARS • WAR OF INDEPENDENCE • AMERICAN CIVIL WAR • INDIAN WARS • SPANISH-AMERICAN WAR • BANANA WAR • WORLD WAR I • WORLD WAR II • VIETNAM WAR • DOMINICAN INTERVENTION • TEHPA RESCUE • LEBANON • CUBA • PANAMA • GULF WAR • BOSNIA • KOSOVO • TERROR • AFGHANISTAN • IRAQ WAR • 9/11 • STATE (ISIS) • COLONIAL WARS • WAR OF INDEPENDENCE • AMERICAN CIVIL WAR • INDIAN WARS • SPANISH-AMERICAN WAR • BANANA WAR • WORLD WAR I • WORLD WAR II • VIETNAM WAR • DOMINICAN INTERVENTION • TEHPA RESCUE • LEBANON • CUBA • PANAMA • GULF WAR • BOSNIA • KOSOVO • TERROR • AFGHANISTAN • IRAQ WAR • 9/11 • STATE (ISIS) • COLONIAL WARS • WAR OF INDEPENDENCE • AMERICAN CIVIL WAR • INDIAN WARS • SPANISH-AMERICAN WAR • BANANA WAR • WORLD WAR I • WORLD WAR II • VIETNAM WAR • DOMINICAN INTERVENTION • TEHPA RESCUE • LEBANON • CUBA • PANAMA • GULF WAR • BOSNIA • KOSOVO • TERROR • AFGHANISTAN • IRAQ WAR • 9/11 • STATE (ISIS) • COLONIAL WARS • WAR OF INDEPENDENCE • AMERICAN CIVIL WAR • INDIAN WARS • SPANISH-AMERICAN WAR • BANANA WAR • WORLD WAR I • WORLD WAR II • VIETNAM WAR • DOMINICAN INTERVENTION • TEHPA RESCUE • LEBANON • CUBA • PANAMA • GULF WAR • BOSNIA • KOSOVO • TERROR • AFGHANISTAN • IRAQ WAR • 9/11 • STATE (ISIS) • COLONIAL WARS • WAR OF INDEPENDENCE • AMERICAN CIVIL WAR • INDIAN WARS • SPANISH-AMERICAN WAR • BANANA WAR • WORLD WAR I • WORLD WAR II • VIETNAM WAR • DOMINICAN INTERVENTION • TEHPA RESCUE • LEBANON • CUBA • PANAMA • GULF WAR • BOSNIA • KOSOVO • TERROR • AFGHANISTAN • IRAQ WAR • 9/11 • STATE (ISIS) • COLONIAL WARS • WAR OF INDEPENDENCE • AMERICAN CIVIL WAR • INDIAN WARS • SPANISH-AMERICAN WAR • BANANA WAR • WORLD WAR I • WORLD WAR II • VIETNAM WAR • DOMINICAN INTERVENTION • TEHPA RESCUE • LEBANON • CUBA • PANAMA • GULF WAR • BOSNIA • KOSOVO • TERROR • AFGHANISTAN • IRAQ WAR • 9/11 • STATE (ISIS) • COLONIAL WARS • WAR OF INDEPENDENCE • AMERICAN CIVIL WAR • INDIAN WARS • SPANISH-AMERICAN WAR • BANANA WAR • WORLD WAR I • WORLD WAR II • VIETNAM WAR • DOMINICAN INTERVENTION • TEHPA RESCUE • LEBANON • CUBA • PANAMA • GULF WAR • BOSNIA • KOSOVO • TERROR • AFGHANISTAN • IRAQ WAR • 9/11 • STATE (ISIS) • COLONIAL WARS • WAR OF INDEPENDENCE • AMERICAN CIVIL WAR • INDIAN WARS • SPANISH-AMERICAN WAR • BANANA WAR • WORLD WAR I • WORLD WAR II • VIETNAM WAR • DOMINICAN INTERVENTION • TEHPA RESCUE • LEBANON • CUBA • PANAMA • GULF WAR • BOSNIA • KOSOVO • TERROR • AFGHANISTAN • IRAQ WAR • 9/11 • STATE (ISIS) • COLONIAL WARS • WAR OF INDEPENDENCE • AMERICAN CIVIL WAR • INDIAN WARS • SPANISH-AMERICAN WAR • BANANA WAR • WORLD WAR I • WORLD WAR II • VIETNAM WAR • DOMINICAN INTERVENTION • TEHPA RESCUE • LEBANON • CUBA • PANAMA • GULF WAR • BOSNIA • KOSOVO • TERROR • AFGHANISTAN • IRAQ WAR • 9/11 • STATE (ISIS) • COLONIAL WARS • WAR OF INDEPENDENCE • AMERICAN CIVIL WAR • INDIAN WARS • SPANISH-AMERICAN WAR • BANANA WAR • WORLD WAR I • WORLD WAR II • VIETNAM WAR • DOMINICAN INTERVENTION • TEHPA RESCUE • LEBANON • CUBA • PANAMA • GULF WAR • BOSNIA • KOSOVO • TERROR • AFGHANISTAN • IRAQ WAR • 9/11 • STATE (ISIS) • COLONIAL WARS • WAR OF INDEPENDENCE • AMERICAN CIVIL WAR • INDIAN WARS • SPANISH-AMERICAN WAR • BANANA WAR • WORLD WAR I • WORLD WAR II • VIETNAM WAR • DOMINICAN INTERVENTION • TEHPA RESCUE • LEBANON • CUBA • PANAMA • GULF WAR • BOSNIA • KOSOVO • TERROR • AFGHANISTAN • IRAQ WAR • 9/11 • STATE (ISIS) • COLONIAL WARS • WAR OF INDEPENDENCE • AMERICAN CIVIL WAR • INDIAN WARS • SPANISH-AMERICAN WAR • BANANA WAR • WORLD WAR I • WORLD WAR II • VIETNAM WAR • DOMINICAN INTERVENTION • TEHPA RESCUE • LEBANON • CUBA • PANAMA • GULF WAR • BOSNIA • KOSOVO • TERROR • AFGHANISTAN • IRAQ WAR • 9/11 • STATE (ISIS) • COLONIAL WARS • WAR OF INDEPENDENCE • AMERICAN CIVIL WAR • INDIAN WARS • SPANISH-AMERICAN WAR • BANANA WAR • WORLD WAR I • WORLD WAR II • VIETNAM WAR • DOMINICAN INTERVENTION • TEHPA RESCUE • LEBANON • CUBA • PANAMA • GULF WAR • BOSNIA • KOSOVO • TERROR • AFGHANISTAN • IRAQ WAR • 9/11 • STATE (ISIS) • COLONIAL WARS • WAR OF INDEPENDENCE • AMERICAN CIVIL WAR • INDIAN WARS • SPANISH-AMERICAN WAR • BANANA WAR • WORLD WAR I • WORLD WAR II • VIETNAM WAR • DOMINICAN INTERVENTION • TEHPA RESCUE • LEBANON • CUBA • PANAMA • GULF WAR • BOSNIA • KOSOVO • TERROR • AFGHANISTAN • IRAQ WAR • 9/11 • STATE (ISIS) • COLONIAL WARS • WAR OF INDEPENDENCE • AMERICAN CIVIL WAR • INDIAN WARS • SPANISH-AMERICAN WAR • BANANA WAR • WORLD WAR I • WORLD WAR II • VIETNAM WAR • DOMINICAN INTERVENTION • TEHPA RESCUE • LEBANON • CUBA • PANAMA • GULF WAR • BOSNIA • KOSOVO • TERROR • AFGHANISTAN • IRAQ WAR • 9/11 • STATE (ISIS) • COLONIAL WARS • WAR OF INDEPENDENCE • AMERICAN CIVIL WAR • INDIAN WARS • SPANISH-AMERICAN WAR • BANANA WAR • WORLD WAR I • WORLD WAR II • VIETNAM WAR • DOMINICAN INTERVENTION • TEHPA RESCUE • LEBANON • CUBA • PANAMA • GULF WAR • BOSNIA • KOSOVO • TERROR • AFGHANISTAN • IRAQ WAR • 9/11 • STATE (ISIS) • COLONIAL WARS • WAR OF INDEPENDENCE • AMERICAN CIVIL WAR • INDIAN WARS • SPANISH-AMERICAN WAR • BANANA WAR • WORLD WAR I • WORLD WAR II • VIETNAM WAR • DOMINICAN INTERVENTION • TEHPA RESCUE • LEBANON • CUBA • PANAMA • GULF WAR • BOSNIA • KOSOVO • TERROR • AFGHANISTAN • IRAQ WAR • 9/11 • STATE (ISIS) • COLONIAL WARS • WAR OF INDEPENDENCE • AMERICAN CIVIL WAR • INDIAN WARS • SPANISH-AMERICAN WAR • BANANA WAR • WORLD WAR I • WORLD WAR II • VIETNAM WAR • DOMINICAN INTERVENTION • TEHPA RESCUE • LEBANON • CUBA • PANAMA • GULF WAR • BOSNIA • KOSOVO • TERROR • AFGHANISTAN • IRAQ WAR • 9/11 • STATE (ISIS) • COLONIAL WARS • WAR OF INDEPENDENCE • AMERICAN CIVIL WAR • INDIAN WARS • SPANISH-AMERICAN WAR • BANANA WAR • WORLD WAR I • WORLD WAR II • VIETNAM WAR • DOMINICAN INTERVENTION • TEHPA RESCUE • LEBANON • CUBA • PANAMA • GULF WAR • BOSNIA • KOSOVO • TERROR • AFGHANISTAN • IRAQ WAR • 9/11 • STATE (ISIS) • COLONIAL WARS • WAR OF INDEPENDENCE • AMERICAN CIVIL WAR • INDIAN WARS • SPANISH-AMERICAN WAR • BANANA WAR • WORLD WAR I • WORLD WAR II • VIETNAM WAR • DOMINICAN INTERVENTION • TEHPA RESCUE • LEBANON • CUBA • PANAMA • GULF WAR • BOSNIA • KOSOVO • TERROR • AFGHANISTAN • IRAQ WAR • 9/11 • STATE (ISIS) • COLONIAL WARS • WAR OF INDEPENDENCE • AMERICAN CIVIL WAR • INDIAN WARS • SPANISH-AMERICAN WAR • BANANA WAR • WORLD WAR I • WORLD WAR II • VIETNAM WAR • DOMINICAN INTERVENTION • TEHPA RESCUE • LEBANON • CUBA • PANAMA • GULF WAR • BOSNIA • KOSOVO • TERROR • AFGHANISTAN • IRAQ WAR • 9/11 • STATE (ISIS) • COLONIAL WARS • WAR OF INDEPENDENCE • AMERICAN CIVIL WAR • INDIAN WARS • SPANISH-AMERICAN WAR • BANANA WAR • WORLD WAR I • WORLD WAR II • VIETNAM WAR • DOMINICAN INTERVENTION • TEHPA RESCUE • LEBANON • CUBA • PANAMA • GULF WAR • BOSNIA • KOSOVO • TERROR • AFGHANISTAN • IRAQ WAR • 9/11 • STATE (ISIS) • COLONIAL WARS • WAR OF INDEPENDENCE • AMERICAN CIVIL WAR • INDIAN WARS • SPANISH-AMERICAN WAR • BANANA WAR • WORLD WAR I • WORLD WAR II • VIETNAM WAR • DOMINICAN INTERVENTION • TEHPA RESCUE • LEBANON • CUBA • PANAMA • GULF WAR • BOSNIA • KOSOVO • TERROR • AFGHANISTAN • IRAQ WAR • 9/11 • STATE (ISIS) • COLONIAL WARS • WAR OF INDEPENDENCE • AMERICAN CIVIL WAR • INDIAN WARS • SPANISH-AMERICAN WAR • BANANA WAR • WORLD WAR I • WORLD WAR II • VIETNAM WAR • DOMINICAN INTERVENTION • TEHPA RESCUE • LEBANON • CUBA • PANAMA • GULF WAR • BOSNIA • KOSOVO • TERROR • AFGHANISTAN • IRAQ WAR • 9/11 • STATE (ISIS) • COLONIAL WARS • WAR OF INDEPENDENCE • AMERICAN CIVIL WAR • INDIAN WARS • SPANISH-AMERICAN WAR • BANANA WAR • WORLD WAR I • WORLD WAR II • VIETNAM WAR • DOMINICAN INTERVENTION • TEHPA RESCUE • LEBANON • CUBA • PANAMA • GULF WAR • BOSNIA • KOSOVO • TERROR • AFGHANISTAN • IRAQ WAR • 9/11 • STATE (ISIS) • COLONIAL WARS • WAR OF INDEPENDENCE • AMERICAN CIVIL WAR • INDIAN WARS • SPANISH-AMERICAN WAR • BANANA WAR • WORLD WAR I • WORLD WAR II • VIETNAM WAR • DOMINICAN INTERVENTION • TEHPA RESCUE • LEBANON • CUBA • PANAMA • GULF WAR • BOSNIA • KOSOVO • TERROR • AFGHANISTAN • IRAQ WAR • 9/11 • STATE (ISIS) • COLONIAL WARS • WAR OF INDEPENDENCE • AMERICAN CIVIL WAR • INDIAN WARS • SPANISH-AMERICAN WAR • BANANA WAR • WORLD WAR I • WORLD WAR II • VIETNAM WAR • DOMINICAN INTERVENTION • TEHPA RESCUE • LEBANON • CUBA • PANAMA • GULF WAR • BOSNIA • KOSOVO • TERROR • AFGHANISTAN • IRAQ WAR • 9/11 • STATE (ISIS) • COLONIAL WARS • WAR OF INDEPENDENCE • AMERICAN CIVIL WAR • INDIAN WARS • SPANISH-AMERICAN WAR • BANANA WAR • WORLD WAR I • WORLD WAR II • VIETNAM WAR • DOMINICAN INTERVENTION • TEHPA RESCUE • LEBANON • CUBA • PANAMA • GULF WAR • BOSNIA • KOSOVO • TERROR • AFGHANISTAN • IRAQ WAR • 9/11 • STATE (ISIS) • COLONIAL WARS • WAR OF INDEPENDENCE • AMERICAN CIVIL WAR • INDIAN WARS • SPANISH-AMERICAN WAR • BANANA WAR • WORLD WAR I • WORLD WAR II • VIETNAM WAR • DOMINICAN INTERVENTION • TEHPA RESCUE • LEBANON • CUBA • PANAMA • GULF WAR • BOSNIA • KOSOVO • TERROR • AFGHANISTAN • IRAQ WAR • 9/11 • STATE (ISIS) • COLONIAL WARS • WAR OF INDEPENDENCE • AMERICAN CIVIL WAR • INDIAN WARS • SPANISH-AMERICAN WAR • BANANA WAR • WORLD WAR I • WORLD WAR II • VIETNAM WAR • DOMINICAN INTERVENTION • TEHPA RESCUE • LEBANON • CUBA • PANAMA • GULF WAR • BOSNIA • KOSOVO • TERROR • AFGHANISTAN • IRAQ WAR • 9/11 • STATE (ISIS) • COLONIAL WARS • WAR OF INDEPENDENCE • AMERICAN CIVIL WAR • INDIAN WARS • SPANISH-AMERICAN WAR • BANANA WAR • WORLD WAR I • WORLD WAR II • VIETNAM WAR • DOMINICAN INTERVENTION • TEHPA RESCUE • LEBANON • CUBA • PANAMA • GULF WAR • BOSNIA • KOSOVO • TERROR • AFGHANISTAN • IRAQ WAR • 9/11 • STATE (ISIS) • COLONIAL WARS • WAR OF INDEPENDENCE • AMERICAN CIVIL WAR • INDIAN WARS • SPANISH-AMERICAN WAR • BANANA WAR • WORLD WAR I • WORLD WAR II • VIETNAM WAR • DOMINICAN INTERVENTION • TEHPA RESCUE • LEBANON • CUBA • PANAMA • GULF WAR • BOSNIA • KOSOVO • TERROR • AFGHANISTAN • IRAQ WAR • 9/11 • STATE (ISIS) • COLONIAL WARS • WAR OF INDEPENDENCE • AMERICAN CIVIL WAR • INDIAN WARS • SPANISH-AMERICAN WAR • BANANA WAR • WORLD WAR I • WORLD WAR II • VIETNAM WAR • DOMINICAN INTERVENTION • TEHPA RESCUE • LEBANON • CUBA • PANAMA • GULF WAR • BOSNIA • KOSOVO • TERROR • AFGHANISTAN • IRAQ WAR • 9/11 • STATE (ISIS) • COLONIAL WARS • WAR OF INDEPENDENCE • AMERICAN CIVIL WAR • INDIAN WARS • SPANISH-AMERICAN WAR • BANANA WAR • WORLD WAR I • WORLD WAR II • VIETNAM WAR • DOMINICAN INTERVENTION • TEHPA RESCUE • LEBANON • CUBA • PANAMA • GULF WAR • BOSNIA • KOSOVO • TERROR • AFGHANISTAN • IRAQ WAR • 9/11 • STATE (ISIS) • COLONIAL WARS • WAR OF INDEPENDENCE • AMERICAN CIVIL WAR • INDIAN WARS • SPANISH-AMERICAN WAR • BANANA WAR • WORLD WAR I • WORLD WAR II • VIETNAM WAR • DOMINICAN INTERVENTION • TEHPA RESCUE • LEBANON • CUBA • PANAMA • GULF WAR • BOSNIA • KOSOVO • TERROR • AFGHANISTAN • IRAQ WAR • 9/11 • STATE (ISIS) • COLONIAL WARS • WAR OF INDEPENDENCE • AMERICAN CIVIL WAR • INDIAN WARS • SPANISH-AMERICAN WAR • BANANA WAR • WORLD WAR I • WORLD WAR II • VIETNAM WAR • DOMINICAN INTERVENTION • TEHPA RESCUE • LEBANON • CUBA • PANAMA • GULF WAR • BOSNIA • KOSOVO • TERROR • AFGHANISTAN • IRAQ WAR • 9/11 • STATE (ISIS) • COLONIAL WARS • WAR OF INDEPENDENCE • AMERICAN CIVIL WAR • INDIAN WARS • SPANISH-AMERICAN WAR • BANANA WAR • WORLD WAR I • WORLD WAR II • VIETNAM WAR • DOMINICAN INTERVENTION • TEHPA RESCUE • LEBANON • CUBA • PANAMA • GULF WAR • BOSNIA • KOSOVO • TERROR • AFGHANISTAN • IRAQ WAR • 9/11 • STATE (ISIS) • COLONIAL WARS • WAR OF INDEPENDENCE • AMERICAN CIVIL WAR • INDIAN WARS • SPANISH-AMERICAN WAR • BANANA WAR • WORLD WAR I • WORLD WAR II • VIETNAM WAR • DOMINICAN INTERVENTION • TEHPA RESCUE • LEBANON • CUBA • PANAMA • GULF WAR • BOSNIA • KOSOVO • TERROR • AFGHANISTAN • IRAQ WAR • 9/11 • STATE (ISIS) • COLONIAL WARS • WAR OF INDEPENDENCE • AMERICAN CIVIL WAR • INDI