

The Anderson County Review



Probitas,
virtus, integritas
in summa.

— ONE U.S. DOLLAR —
AUGUST 21, 2012
SINCE 1865 • 146th Year, No. 52

Harris, Kincaid, Lone Elm, Mont Ida, Scipio, Selma, Welda, Westphalia — KANSAS

www.garnett-ks.com | (785) 448-3121 | review@garnett-ks.com

**Ice cream social
welcomes students
back to school.**
See page 1B

Win a Gator!
Contest ends Aug. 31.
See Entry Form and
Details on Page 6A



**FIND US ON
FACEBOOK**

facebook

Look for The Anderson County Review on Facebook to get breaking news updates.

E-statements & Internet Banking



GSSB

Member FDIC 1899-2012 (785) 448-3111

Hospital pushes back new facility plan

**April election gives
ACH more time to
consider funding**

BY DANE HICKS THE ANDERSON COUNTY REVIEW

GARNETT — Anderson County Hospital officials will back away from a November ballot initiative for the construction of a new hospital facility in

the county, looking instead to an April 2013 timetable which would provide more time for a public promotional campaign.

County counselor James Campbell told commissioners last week he had discussed the decision with ACH officials. The move came two weeks after ACH leaders notified county commissioners they had voted to request a general obliga-

tion bond issue be submitted to county voters this election year, and asked county commissioners to place a question on the ballot.

The initial outline of the project called for a bond issue of some \$26 million and an enhanced lease commitment from St. Luke's Health System of some \$1.5 million a year in what would initially be a 10

year lease. Dave Lybarger, representing the hospital's board of directors, and Diane Doran, representing its board of trustees, told commissioners the preliminary construction cost estimates were likely inflated to ensure a conservative projection, and that the estimates and proposal would be refined further if the commission was amenable to placing the mea-

sure on the ballot.

Financing options were initially a stumbling block, with a state imposed G.O. bond limit of 3 percent of the county's assessed valuation, which would fund roughly a tenth of the project. The other option would involve the project being pursued by the county's Public Building Commission, which is exempt from the G.O. bond

limit, after an advisory vote in the county.

Commissioner Jim Johnson said last week there could be some leeway within the G.O. bond limit, but that hadn't been fully explored yet.

"We need more time to get it all together," Lybarger said yesterday. "It's more logical to think we're headed for an April

SEE HOSPITAL ON PAGE 5A

Kids Head Back to School



THE ANDERSON COUNTY REVIEW 08-21-2012 / Vickie Moss

Above, students get off the bus at Garnett Elementary School as they head into the school for the first day of classes Friday, Aug. 17. Students and staff wore T-shirts that matched the color of the area in the school where they had classes. See a group picture on Page 8B.

At left: Teacher Peggy Mechnig greets incoming kindergartener Hailee Goad.



Proposed new dog law targets owners, not breed

**City close to passing
revised ordinance,
more work needed**

BY VICKIE MOSS THE ANDERSON COUNTY REVIEW

GARNETT — Debra Malone, who recently was bitten by a dog she described as a pit bull, went to Tuesday's city commission meeting to ask commissioners not to change the city's dog ordinance that specifically targets pit bulls and rottweilers.

But by the end of the meeting, Malone was in favor of a new ordinance that would remove

breed-specific prohibitions but put a number of new responsibilities and penalties on dog owners.

"I like the new ordinance," Malone said. "It puts the responsibility where it belongs, with the owner."

Commissioners did not pass the ordinance Tuesday, instead asking City Attorney Terry Solander to make a few changes and bring it back in two weeks. But two of three commissioners expressed support for the ordinance, making it likely to pass unless one of them changes his mind. The city commission has

SEE DOGS ON PAGE 3A

High oil prices lead to low local taxes

**Oil leases boost county
values, governments
lower some mill levies**

BY VICKIE MOSS THE ANDERSON COUNTY REVIEW

GARNETT — Anderson County taxpayers may have oil companies to thank for keeping taxes low in 2013.

An increase in oil prices that resulted in more oil wells being drilled or reopened in Anderson County also resulted in a significant increase in the county's valuation, or how much county property is worth. The county's valuation increased more than \$5 million, up to \$76,394,090 this year compared to \$71,506,186 last year.

Because of the higher valuation, taxing entities such as counties, cities and school boards were able to keep tax increases at a minimum and in some cases lowered their mill levies.

High oil prices and a greater number of oil wells in the county made up much of that increase, a representative from the Anderson County Appraiser's Office said. The county's interim appraiser, Beth Shaw, could not be reached for more specific details about the valuation, but Marlene Hermreck with the office attributed some of the increase to higher oil prices and increased oil lease production locally, as well as an increase in

SEE GOVERNMENT ON PAGE 5A

Group wants to start after-school program

**Volunteers needed;
plans still in very early
stages, organizers say**

BY VICKIE MOSS THE ANDERSON COUNTY REVIEW

GARNETT — It's a refrain heard time and again: "There's nothing for kids to do in this town."

A group of people who regularly work with local children hope they can help solve part of that problem and give working parents a little more peace of mind.

Representatives of Big Brothers Big Sisters, the City of Garnett Recreation Department and a USD 365 employee hope to start an after-school program

for elementary school students in Garnett. The program is still in the very early stages of discussion, and organizers are searching for volunteers who would be interested in helping develop it.

Brad Yeubanks, recreation director for the city, is working with Jennifer Keith of Big Brothers Big Sisters and

Amy Wettstein, a counselor at Garnett Elementary Center. The three recently discussed a possible after-school program with the city's Parks and Recreation board. If such a program were implemented, it likely wouldn't get started until later this fall. The program might begin on a trial basis in October and

SEE PROGRAM ON PAGE 2A

Pipes, foundations fall victim to drought

**Dry, cracked ground leads
to broken gas, water
lines; hurts foundations**

BY VICKIE MOSS THE ANDERSON COUNTY REVIEW

GARNETT — The continuing drought has brought additional concerns for homeowners and utility providers — the potential for cracked foundations and broken gas or water lines.

Dry, cracked ground can wreak havoc on underground utilities and building foundations, Shane Lyle, a senior research assistant for the Kansas Geological Survey, said. When soil loses moisture, it will contract and shift. Gas or

water lines, especially those made of older material or already in a weakened condition, can break when the ground moves. The foundations of houses or other buildings also can be vulnerable to changes in soil moisture, Lyle said.

Soil that is high in clay content takes in more moisture, so when it dries the difference in soil movement can be extreme. It's best to keep soil moisture at a consistent level, especially around foundations, Lyle said. That means in times of heavy rain, don't let water pool around foundations. In times of drought, it's a good idea to water the soil around building foundations, he said.

That creates sort of a Catch

22 situation in times of drought. Water suppliers like the City of Garnett have asked customers to watch their water usage and curtail unnecessary usage like watering lawns and gardens.

But in the City of Garnett, water supplies haven't yet hit critical levels, city manager Joyce Martn said. Customers seem to be keeping usage low, and the Cedar Valley Reservoir's level continues at an acceptable level. City officials do not plan to ask for further water restrictions.

But the dry ground has led to some problems for the city and its customers.

In recent weeks, city workers battled at least three water line

SEE DROUGHT ON PAGE 5A



THE ANDERSON COUNTY REVIEW 08-21-2012 / Vickie Moss

Cracks in the asphalt along the Prairie Spirit Trail in Garnett have worsened with the recent drought, but officials say they'll likely wait to see if rain can ease the situation and if they can get a grant to help pay for resurfacing of some portions of the trail in the city limits.

Promote your business or special event here- only \$30. Call (785) 448-3121

NEWS IN BRIEF

COMMODITY DISTRIBUTION

The ECKAN Agency will distribute commodity food items to eligible Anderson County commodity participants on Thursday, August 30th at the ECKAN center, 132 E. 5th, Garnett from 9:00am - 12:00 noon. Please note this is a change in the regular date for commodities distribution for this month only.

RED/WHITE GAMES AUG. 24

The Bulldog Booster Club will be hosting the annual Red/White volleyball games and football scrimmage on Friday, August 24, beginning at 4:30 p.m. All games will be held at the Anderson County High School. Volleyball games will begin at 4:30 with the football scrimmage following the conclusion of the volleyball games. An admission will be charged and school, family and golden age passes cannot be used for these games. Concessions will also be available. Come out and see what our teams are going to look like for the upcoming 2012 Fall Sports season!

LANDFILL HOLIDAY

The Anderson County Landfill will be closed for Labor Day Sept. 1-3.

BACK TO SCHOOL CARNIVAL

GES PTO will have a Back to School carnival from 5 p.m. to 8 p.m. Friday, Aug. 31, at the Garnett Elementary School gymnasium. There will be games, prizes, a raffle and food.

PHOTO WORKSHOP PLANNED

In preparation for our "Day in the Life of Anderson County" Photography Contest, the Garnett Public Library is sponsoring a photography workshop. The workshop will be presented by Fred Kaut, a retired Hallmark photographer and Katie Rockers from Rockers Photography. They will discuss the general elements of photography and give tips on how to take a great picture. The workshop will be held on Thursday, August 23rd at 7:00 p.m. in the Archer Room.

SEVERE WEATHER ALERT

Anderson County residents who want to get National Weather Service severe weather warnings by phone via the county's CodeRed system should register online at www.andersoncountys.ks.org, click Public safety/emergency management, or pick up registration forms at the county annex, Garnett City Hall, Garnett Library, Welda Post office, Westphalia Cop, Greeley City Hall, Kincaid City Hall or Colony City Hall. You must be registered to receive the severe weather warnings by landline or cell phone. For more information contact AC Emergency Management at (785) 448-6797.

DONATIONS, SUPPLIES

The Backpack Brigade is seeking donations of school supplies and backpacks for Crest students who need help purchasing those supplies. Donations are needed within the next couple of weeks. Donations can be sent to an account at GSSB. For more information or to make arrangements for donations of money or supplies, contact Melissa Hobbs at (620) 852-3086, or Kloma Buckle at (620) 852-3367.

CARE GIVER SUPPORT

Anderson County Caregiving Support meets the fourth Monday of each month from 1-2 p.m. at the Southeast Kansas Mental Health Center conference room, 519 S. Elm St., Garnett. For more information call Phyllis at ECKAAA, (800) 633-5621.

REVIEW FREE TO MILITARY

Members of the American military from Anderson County who are currently on active duty can now get the Internet edition of The Anderson County Review free of charge. Service members should e-mail their name, address, present duty station and phone number to admin@garnett-ks.com to receive their username and password to access the weekly pdf file.

HELP FOR ANIMALS

Anyone willing to donate kitty litter, canned dog food or canned cat food, dog and cat toys, paper towels, laundry and cleaning supplies, or newspaper to help support Prairie Paws Animal Shelter can contact Lisa at 785-304-4286.

ANDERSON COUNTY BOARD OF COMMISSIONERS JULY 23

Chairman Dudley R. Feuerborn called the meeting of the Anderson County Board of Commissioners to order at 9:00 a.m. on July 23 at the County Commission Room. Attendance: Dudley R. Feuerborn, Present; Eugene Highberger, Present; James K. Johnson, Present. All present. The pledge of allegiance was recited. Minutes of the previous meeting were read and approved.

Road and Bridge

Lester Welsh, Road Supervisor, met with the commission. He reported the state is not going to proceed with charging liquidated damages against the company doing the bridge for not getting it done on time. It is up to the county if charges are paid. There should be about 12 days at \$800 per day. Commission will talk to the county counselor about proceeding with collecting the damages.

Hospital

Diane Doran, Hospital Board of Trustees, and Dave Lybarger, Hospital Facility Board of Trustees, met with the commission. Denny Hachenberg, Hospital Administrator, was also present. Diane stated that at their last meeting the board voted to ask permission to place a question on the November ballot to build a new hospital and long term care unit. Dave stated he is President of the St. Luke's Facility Board and stated they had looked at the needs of the hospital and feel it is in the best interest to build a new facility. It was questioned by the commission whether there are any grants available to assist in the building of a new facility. Commissioner Feuerborn stated that a 10 mill increase to the residents of Anderson County is a big hit. It was reported they are in negotiations with St. Luke's on a lease agreement if a new facility is built.

Veterans Memorial Committee

Dorothy Lickteig, Phyllis Gettler, Ken Miller, Steve Newland, and Doug Archer met with the commission. They have been requested by the commission to serve on a committee to build a Veterans Memorial on the courthouse lawn. Todd Barns and Tommy Lewis have also been asked but it was not certain whether they were willing to serve. Dorothy Lickteig brought Leon Lickteig who has built a Vietnam Memorial in Kansas City. The commission explained what they were looking at for a memorial and what they wanted the committee to do. The committee will meet hopefully later this week and set up guidelines.

Bond Counsel

Dottie Riley, Kutak Rock, met with the commission concerning the question of bonds for the proposed hospital construction. Options for the types of funding were discussed. She pointed out that the county is limited on the amount of debt they can have and general obligation bonds are in that category. The hospital could be built with hospital revenue bonds and the debt can be paid off with the revenue. The public building commission could also issue bonds for a hospital, however, the county would also have to broaden the authority by resolution of the building commission, and that resolution would be subject to a protest period. A lease purchase option is also available but they are more expensive and the leaser can end up defaulting on the payments.

Sheriff

Sheriff Hupp met with the commission. He presented a revised budget request for 2013. He informed the commission there is still county property at the old nursing home. Some he can make use of but some could be taken to the landfill and some could be taken to the Tuesday sale after it is advertised.

Ambulance

Commissioner Johnson moved to fund 1/2 an ambulance not to exceed \$70,000 with the Board of Trustees to fund the other half this year. Commissioner Highberger seconded. Approved 3-0.

PROGRAM...

FROM PAGE 1A

November, and could be offered in full at the start of the second semester.

With a new school year beginning, many parents are concerned about what their children will do in the time between the end of the school day and the time when parents get off work - typically, from about 3 p.m. to 5 p.m. The need for an after-school option became very apparent to Wettstein during enrollment, when staff asked parents how they planned to have their children picked up after school in order to better determine traffic patterns at the new building.

"I knew there was a need, I just didn't realize how bad it was until I was here, hearing parents say, 'I don't know where my child is going after school,'" Wettstein said.

Organizers say they want to make sure an after-school program would provide an educational and health-related aspect, rather than simply providing a baby sitting service. Some of the activities could include help with homework, crafts, games and other activities. The program likely would require a small fee, Yeubanks said.

The program could utilize the Garnett Recreation Center, although organizers realize that bringing a large group of kids to the facility on a regular

Meeting adjourned at 12:34 p.m.

LAND TRANSFERS

Moonlight Investment Properties LLC to Robert Calver, Lot 20, Block 59, in the City of Garnett.

Marvin H. Robertson to Sherry J. Lee, E2, Lot 15 and all Lots 16 and 17, Block 54, City of Garnett.

Robert W. Greene to Kyle J. Peine, Lot 5 and South 30', Lot 4, Block 3, Kim Addition to City of Garnett.

CIVIL CASES FILED

JP Morgan Chase Bank, NA vs. Judy A. Garcia and unknown spouse, asking \$36,774.51.

CIVIL CASES RESOLVED

Cora A. Krapp vs. Stever Weese and Tracy L. Weese, \$48,062.87 plus interest and costs.

DOMESTIC CASES FILED

Sara E. Hirt vs. Ronnie L. Hirt, post-divorce order and transfer to Anderson County.

Karen F. Lucas vs. James E. Lucas, petition for divorce.

DOMESTIC CASES RESOLVED

Joshua L. Morrill vs. Lacey D. Morrill, divorce decree granted.

Karen F. Lucas vs. James E. Lucas, divorce degree granted.

Sara E. Hirt vs. Ronnie L. Hirt, post-divorce order and transfer to Anderson County ordered.

LIMITED ACTION FILED

Colby R. Brownrigg vs. Ralph Reginald Adams, asking \$1,909.32.

LIMITED ACTION RESOLVED

Auburn Pharmacy vs. Delbert Adams, dismissed.

Kyle Oswald vs. Ambrosia A.A. Hobbs, dismissed.

SMALL CLAIMS RESOLVED

Ray Malony dba Rays Metal Depot, Inc. vs. Steve Watson dba SEK Truck and Auto Repair, \$3,850.30 plus interest and costs.

Countyside Veterinary Clinic vs. Shawn King, \$198.75 plus interest and costs.

Countyside Veterinary Clinic vs. Lynda Lea Holstine and Darrin Gay Holstine, \$96.16 plus interest and costs.

Countyside Veterinary Clinic vs. Russel Stahl and Wendy Desiree Stahl, \$409.24 plus interest and costs.

CRIMINAL CASES RESOLVED

Speeding violations:

Jarita Sharron Johnson, \$343 fine.

Eric Leigh Mersman, \$255 fine, failure to wear seat belt, \$10 fine.

David A. Roy, \$143 fine, failure to wear seat belt, \$10 fine.

Darnell Johnson, \$203 fine.

Nolan Eugene Church, \$185 fine.

Nicole L. Miller, \$230 fine.

Robert L. Bradley, \$143 fine.

Larry J. Jessip, \$143 fine.

Antoinette Sunoh Kim, \$149 fine.

Patrick S. Weaver, \$161 fine.

Lorraine M. Reichard, \$161 fine.

Melanie A. Sowards, \$191 fine.

Seat belt violations:

Tamara A. Wallace, \$10 fine.

Jeffery M. Wallace, \$10 fine.

Sherry A. Benjamin, \$10 fine.

Claron E. Benjamin, \$10 fine.

Brandon Christopher Hopkins, \$10 fine.

Jonathan L. Gordon, \$10 fine.

Other:

Jessica Raeane Bowen, criminal deprivation of motor vehicle, dismissed.

Linda Lee Scheckel, distribute certain stimulants within 1000' of school, dismissed, use or possess with intent paraphernalia to cultivate a controlled substance, dismissed, aggravated endangering a child, expose to manufacture/sale of methamphetamine, sentencing set for October 15 at 1:00 p.m.

Mark Glimpse, wildlife parks and recreation, general violations, x2, \$173 fine.

Stephen L. Lehman, motor carrier safety rules and regulations, \$213 fine.

Tyler D. Anderson, motor carrier safety

rules and regulations, \$148 fine.

GARNETT MUNICIPAL COURT

Speeding and other traffic violations:

Susan Marie Barnett, Moundsview, Minnesota, July 22, \$135 fine.

Nicholas E. Bradford, Fayetteville, Arkansas, June 23, \$135 fine.

Donald W. Combs, Burlington, July 6, \$135 fine.

James E. Connor, Greeley, May 25, driving while license canceled/suspended - 5 day jail suspension; no proof of liability insurance - \$350 fine, \$150 suspension, 30 days jail suspension; seat belts required, \$10 fine.

Jacob D. Crawford, Copan, Oklahoma, July 7, \$165 fine.

Jeffrey Milton Davison, Garnett, July 26, \$165 fine.

Tameka L. Drake, Kansas City, Missouri, July 5, driving while license canceled/suspended/revoked, \$150 fine 5 days jail suspension; tail lamps required, \$25 fine.

Ericka D. Eregbu, Ames, Iowa, July 21, \$210 fine.

Clifford F. Feuerborn, Greeley, July 17, \$135 fine.

Connie E. Forsberg, Overland Park, May 26 \$135 fine.

Phillip E. Foust, Bartlesville, Oklahoma, August 5, \$135 fine.

Jonathan T. Fraser, Rantoul, June 20, limitations on backing, \$110 fine.

Ramon Antonio Garcia, Anaheim, California, June 13, \$135 fine.

Ronald G. Gaston, Jr., Garnett, June 23, driving while license canceled/suspended, \$250 fine 5 days jail suspension.

Harold Lee Gilbreth, Jr., Garnett, July 12, limitations on backing, \$110 fine.

Cameron G. Gregg, Bartlesville, Oklahoma, July 22, \$135 fine.

Derek Kyle Hilliard, Garnett, July 7, \$135 fine, expired driver's license, \$150 fine.

Julia Ann Hurlock, Parker, October 19, 2011, no proof of liability insurance, \$350 fine - \$150 suspension.

Angela Kay Kelley, Garnett, June 24, transporting alcohol liquor or CMB, \$200 fine.

Arika Nicole Mack, Lawrence, July 21, \$135 fine.

Scott A. McMeen, Hillsdale, Illinois, July 6, \$135 fine.

Kathy Ann McMillen, Chanute, July 12, \$135 fine.

Rebecca Ann McNemar, Galena, July 31, \$135 fine.

Pete Denny Orban, Claremore, Oklahoma, July 22, \$135 fine.

Nancy T. Prohaka, Atchison, August 3, \$110 fine.

Grady A. Ratliff, St. Mary's, July 22, \$165 fine.

Justin Ivan Rolif, Westphalia, July 31, \$135 fine.

Marcel A. Seamster, Chanute, June 29, no proof of liability insurance, \$350 fine, \$150 suspension.

Chandradeep Thummalaipenta, Dallas, Texas, July 20, \$135 fine.

Henry Ralph Vanheeneen, Pella, Iowa, August 5, \$135 fine.

Dennis W. Walker, Trinity, Texas, July 20, \$165 fine.

Jacob A. Wolken, Garnett, July 17, \$165 fine.

Megan M. Wynn, Muskogee, Oklahoma, July 4, \$135 fine.

Other:

Lucinda M. Alesich, Colony, July 7, \$75 fine.

Stacy E. Ashley, Garnett, July 12, windows must be unobstructed, \$110 fine.

Julia M. Davis, Garnett, July 6, failure to register dog, \$100 fine, \$25 suspension

Stephen Michael Filley, Olathe, March 21, obstructing legal process or official duty, \$1,000 fine, \$500 suspension, 90 days jail - 88 suspension, 1 year probation; disorderly conduct, \$550 fine - \$350 suspension, 30 days jail - suspension.

Jamie I. Hermreck, Garnett, June 12,

allowing dog to commit trespass, \$150 fine.

Jason K. Hermreck, Garnett, July 8, criminal damage to property, \$350 fine, \$200 restitution; disorderly conduct, \$125 fine.

Jacob Wayne Kratzberg, Garnett, July 6, possession of alcohol liquor or CMB by minor, \$175 fine.

Stephanie L. Leistra, Garnett, July 6, failure to register dog x3, \$200 fine - \$75 suspension.

Mitchael L. Malone, Garnett, July 21, violation of protective order, \$1,050 fine, \$900 suspension, 30 days jail - suspension.

Maxwell K.E. McCain, Garnett, July 7, possession of alcohol liquor or CMB by minor, \$175 fine.

Cody J. Meeker, Garnett, July 18, possession of alcohol liquor or CMB by minor, \$175 fine.

Cody Aaron Nungesser, Garnett, July 12, improper towing, \$110 fine.

Heather N. Wilson, Garnett, July 7, possession of alcohol liquor or CMB by minor, \$175 fine.

GARNETT POLICE REPORT

Incidents

A report was made on August 3 of burglary and theft of property of two cell phones valued at \$100 and a car key and occurred on West 5th Avenue.

A report was made on August 11 of criminal damage to property to a 1999 Ford Taurus valued at \$500 and occurred on West 6th Avenue.

A report was made on August 16 of interference with law enforcement officer and theft of property/services of a 12 oz. can of spam valued at \$3.00 and occurred on North Maple Street.

Arrests

Michael Drimmel, Garnett, August 2, domestic battery and disorderly conduct.

Jacob Heubach, Garnett, August 3, liquor purchase by minor.

Derek Beck, Garnett, August 4, DWS - 2nd or subsequent conviction.

Jamison Herr, Garnett, August 5, disorderly conduct.

Zachary Kirkland, Garnett, August 8, sexual battery and lewd and lascivious, exposing to person under 16.

Jason Stonking, Garnett, August 8, liquor purchase by minor and interference with law enforcement officer.

Justin Pate, Garnett, August 8, liquor purchase by minor.

Devon Stamper, Garnett, August 8, liquor purchase by minor.

James Hogan, Garnett, August 13, arrest by law enforcement officer.

Mary Chase, Garnett, August 16, theft of property or services and interference with law enforcement officer.

ANDERSON COUNTY SHERIFFS' REPORT

Incidents

A report was made on May 16 of criminal damage to property of two busted out windows valued at \$300 and occurred on West 5th Avenue in Kincaid.

A report was made on July 31 of battery and occurred on East 5th Street in Colony.

Accidents

An accident was reported on August 6 when a vehicle driven by Christ O. Henning, 37, Cherryvale, was traveling northbound on U-169 Highway at 1750 Road when he struck another vehicle in the rear which was driven by Dennis H. Graham, 45, Garnett, who was turning west onto 4th Street.

An accident was reported on August 6 when a 16' single unit truck driven by Calvin Morris Rolan, 66, Morris, Oklahoma, was traveling southbound on U-169 Highway at 1000 Road when he fell asleep. The truck

went off the road on the west side then ran into a drainage ditch embankment.

JAIL LOG

Devon Wayne Stamper, 19 Garnett, August 9, liquor purchase by minor, no bond set.

Jason Peter Stoneking, 18, Garnett, August 9, liquor purchase by minor, no bond set.

Justin Wayne Pate, 18, Garnett, August 9, possession or consumption or sale by minor, bond set at \$1,500.

Tonia Jo Jackson, 35, Westphalia, August 10, failure to appear, bond set at \$50.

David Ivan Short, 42, Garnett, August 10, 60 day writ.

James Leo Hogan, 18, Garnett, August 13, probation violation, bond set at \$140.

Brian Kelly Jones, 38, Gardner, failure to appear, bond set at \$1,000.

Roger Allen Scheckel, 53, Garnett. DUI - 1st conviction, no liability insurance required, and failure to stop at accident injury/damage under \$1,000, bond set at \$1,000.

Timothy Lawrence Lemoine, 49, Ottawa, August 15, possession of certain hallucinogenic drugs, interference with law enforcement officer, obstruct/resist, x2, bond set at \$1,000.

JAIL ROSTER

Brian McAdam was booked into jail on July 5 for Anderson County, bond set at \$50,000.

Brandon Dulin was booked into jail on July 5 for Anderson County, bond set at \$50,000.

Andrew Holstine was booked into jail on June 21 for Anderson County, bond set at \$10,000.

Marvin Headrick was booked into jail on September 28, 2011 for Anderson County for 12 months.

Marcas McSwane was booked into jail on July 2 for Anderson County, bond set at \$50,000.

Michael Stevens was booked into jail on June 29, 2011 for Anderson County, bond set at \$50,000.

Linda Scheckel was booked into jail on July 5 for Anderson County, bond set at \$50,000.

Connie McCormick was booked into jail on March 28 for Anderson County for 12 months.

FARM-INS

Mark Sharp was booked into jail on July 20 as a hold for Linn County.

Beau Leonard was booked into jail on August 9 as a hold for Miami County.

Ryan Bright was booked into jail on August 10 as a hold for Linn County.

Michael Morris was booked into jail on July 16 as a hold for Linn County.

Zachary Davis was

COOKE

January 9, 1945-July 22, 2012

THE ANDERSON COUNTY REVIEW
Published August 21, 2012

Sharon Kay Cooke, 67, beloved mother and sister passed away Sunday, July 22, 2012, at her home in Iola.



Cooke

Sharon was born January 9, 1945, in Lamar, Missouri, the daughter of Leo E. and Lanta Lee (Woods) Needham. She grew up in Lamar where she graduated from high school. Sharon continued her education receiving multiple degrees from Pittsburg State University and Emporia State University.

Sharon made her home at Kincaid for many years before moving to Iola in 1992. She married Edward F. Cooke on July 15, 1993 and he preceded her in death February 14, 2008.

Sharon was the district librarian

and teacher for the LeRoy/Gridley school district before she retired. She enjoyed reading and supported wildlife organizations and the Multiple Sclerosis Society.

Survivors include her son, Tawn Katzer and his wife, Keela of Kansas City, Mo.; a brother, Lowell Needham and his wife, Jancy of Lamar, Mo.

She was preceded in death by her parents and an infant sister.

Cremation has taken place. A memorial service is planned for 1 p.m., Sunday, August 26, 2012, at the Waugh-Yokum & Friskel Memorial Chapel in Iola. Visitation will follow the service.

In lieu of flowers, memorials are suggested to the Multiple Sclerosis Society

Memorial gifts may be left with the Waugh-Yokum & Friskel Memorial Chapel of Iola, which is in charge of arrangements.

Online condolences for the family may be left on this website, www.iolafuneral.com.

HINER

THE ANDERSON COUNTY REVIEW
Published August 21, 2012

William L. Hiner, 74, of Olathe, passed away August 15, 2012, after a long and courageous battle with heart disease.

He is survived by his wife of 53 years, Fritzie of the home, three sons, Tom and Doug of Olathe, and Rodney of Overland Park, as well as four grandchildren; Cody, Tyler, Delaney, and Riley, all of Olathe.

Funeral service will be 10 a.m. Tuesday, August 21, at Prince of

Peace Catholic Church, 16000 W. 143rd, Olathe, KS. In lieu of flowers, memorials are suggested to the Mid-America Heart Institute at St. Luke's, or to Prince of Peace Catholic Church.

The family wishes to express their thanks for the care received from Dr. Andrew Kao and all of the nurses and staff at the Heart Institute. To leave a message for the family, please visit www.Penwellgabelolathe.com

GRAYBILL

March 17, 1942-August 12, 2012

THE ANDERSON COUNTY REVIEW
Published August 21, 2012

Lila Lucille Graybill, age 70, of Garnett, died Sunday, August 12, 2012, at her home.

She was born on March 17, 1942, in Anderson County, triplet daughter of Marvin and Mildred (Wagoner) Davison.

She married Carl David Graybill on August 10, 1963, in Garnett. He preceded her in death in 1997.

She was also preceded in death by her father, Marvin Davison; two grandchildren; a great granddaugh-

ter; and a sister, Leanna Mohler.

Survivors include six children; twenty-three grandchildren; eight great grandchildren; her mother, Mildred Davison; one sister, Laura Bauman; her triplet brothers, Lyle Davison and Lelland Davison; brother, Leonard Davison, all of Garnett; and many other nieces, nephews, family and friends.

Funeral services were Thursday, August 16, 2012 at the Garnett Church of the Nazarene. Burial followed in the Bethel Cemetery, rural Westphalia.

HOBSON

August 20, 1930-July 2, 2012

THE ANDERSON COUNTY REVIEW
Published August 21, 2012

Francis (Frank) Leon Hobson, 81 of Reno, NV passed away quietly with his family by his side, on July 2, 2012 at St. Mary's Medical Center, Reno, NV.



Hobson

He was born on August 20, 1930 in Richmond, Kansas, the son of George and Lula (Knight) Hobson. After graduation from high school he joined the U.S. Navy. Frank was a veteran of the Korean and Vietnam Wars, retiring as a Commander in the U.S. Naval Reserves in 1989 after 30 years of service. He was very proud of his military career and inspired continued patriotism in the young ones in the family.

Frank graduated from the University of Kansas with a bachelor's degree in Business Administration in 1957. He worked for the U.S. Forest Service, retiring after more than 25 years.

He married the love of his life, Annalisa Fasola, in Torino,

Italy on Jan. 15, 1959. Frank and Annalisa raised three children in California and often visited Italy on family vacations. In addition to Annalisa, his wife of 53 years, Frank is survived and well-loved by his three children, Paula Diana Hobson of Salem, CT, Monica Lisa Colson of Strasburg, VA and Larry Franklin Hobson, and his wife, Erin, of Washougal, WA; his five grandchildren, Joseph Francis and Sarah Elizabeth-Ann Colson, and Jacob Ryan, James Christian and Jonathan Leon Hobson.

Frank loved the outdoors, was a history buff and enjoyed traveling with Annalisa all over the world. Most important to Frank was his love for his family, followed by his love for his country. He was a devout Catholic, living his life with integrity and a strong faith in God.

A graveside service took place at the Sacramento Valley National Cemetery in Dixon, CA on July 16, 2012. Donations in Frank's memory may be made to the Sacramento Valley National Cemetery, Wreaths Across America Christmas fund or to Boys Town of Nebraska.

We invite you to leave a message in the "Book of Memories" at www.waltonfuneralhomes.com.

JONES

January 14, 1947-August 17, 2012

THE ANDERSON COUNTY REVIEW
Published August 21, 2012

Ann Ellen Jones, 65, of rural Reserve, was born January 14, 1947, in Lawrence, Kansas, to Ralph and Martha Neal Sheern. She passed away August 17, 2012, with her family by her side. Ann married Tom Jones, August 31, 1968, in her hometown of Garnett, Kansas at Holy Angels Church.

Ann graduated from Garnett High School in 1965, and attended Emporia State University. She later worked to receive her BA from Benedictine College in Atchison, Kansas, while being a full time mother of three. Ann finalized her education at the University of Kansas and earned her master's degree in social work in 1990, and held licenses in both Kansas and Nebraska (LMSW).

Ann's career included being a hospice social worker, home health social worker, and for the past 14 years, was a mental health therapist/counselor at Blue Valley Behavioral Health at Falls City, Nebraska.

Ann enjoyed reading, gardening, writing, drawing, and being a mother/grandmother. She was a member of the Bethany United Church of Christ in Hiawatha; and the Saturday Club of Hiawatha.

Ann is survived by her husband Tom Jones of the home; three daughters: Stephanie Tuschhoff, Angela Jones, and Lori Schultz; two sons-in-law: Michael Schultz, Jeff Tuschhoff; five grandchildren: Mercedes, Emma, Beth, Andrew, and Samantha. Also surviving are two sisters: Nancy Reeve, Terry Singer; and a brother

DOGS...

FROM PAGE 1A

been discussing the issue since June, and commissioners have said they want to take their time and give the matter careful consideration before they make changes to a controversial law.

The new ordinance doesn't target any specific breed. Instead, it outlines a process that would allow law officers and the courts to declare an animal as a "dangerous dog." The owner of a dangerous dog would be required to take several steps to contain and identify the animal. If a dog that had been declared a dangerous animal were to bite someone, it would be destroyed and the owner would face a minimum fine of \$250, up to \$500, and a possible jail sentence up to six months.

The proposed ordinance is based on a model adopted by Topeka in 2010, Solander said. He spoke with an assistant city attorney in Topeka who reported the change had been successful in that city.

The ordinance would replace laws put in place in the 1990s during a wave of media reports about attacks and maulings by pit bulls. The city commission at that time wanted to take a proactive approach, which has been effective, Sandy Peine, who was a member of the commission when the original ordinance was adopted, said. She and local veterinarian Dr. Fred Gardner, who was consulted for the original ordinance, have argued that the ordinance should not be changed.

But other local and regional veterinarians argued that targeting specific breeds is outdated and ineffective. It can be difficult even for a veterinarian to identify a specific breed short of a DNA test, they said during previous discussion on the issue. They spoke in favor of laws that would make owners more responsible, rather than laws that target types of dogs.

The current ordinance does not actually ban ownership of pit bulls and rottweilers, but puts several restrictions on owners who choose to keep those dogs. The ordinance does not specify any penalties for owners if those dogs were to attack and injure someone. The new ordinance keeps several restrictions, and adds a few, but they would apply to any dog that had been declared a "dangerous dog" regardless of breed. It also offers a way to penalize owners if the animal hurts someone.

Commissioner Preston Peine spoke in favor of changing the ordinance, citing opinions by various groups, including the American Bar Association and the American Veterinary Association, which support breed-neutral dog laws. Thirteen states have outlawed using breed-specific language in dog laws, Peine said.

Mayor Greg Gwin was in favor of leaving the current

How the proposed dog ordinance would work

Here's a closer look at key parts of the city's proposed dog ordinance. The proposed changes have not yet been approved, which means these regulations are not yet law.

What's a "dangerous dog"?

- A dog with a know tendency to attack, injure or threaten humans or other domestic animals.
- A dog that approaches, apparently with intent to attack, someone on streets, sidewalks, public places or private property other than the owner's property.
- A dog which, unprovoked, attacks or bites a person or domestic animal.
- A dog kept for the purpose of dog fighting, if appropriate professionals determine the dog is dangerous.

A dog is NOT dangerous under some circumstances:

- If injury was sustained by someone who was committing a willful trespass on the owners premises; or was committing or attempting to commit a crime.
- If injury was sustained by someone who was teasing, tormenting, abusing or assaulting the dog.
- If the dog was protecting or defending a human.
- If the dog was protecting its offspring.
- If the dog was performing its duties for law enforcement purposes.

How is a dog declared dangerous?

- An animal control officer or law enforcement officer who has probable cause to believe a dog is dangerous may seize and impound the animal. The owner also can voluntarily impound the animal at a veterinarian in the city.

What happens if your dog is declared dangerous?

- The city will require owners of dangerous dogs to follow certain restrictions.
- Registration. The dog must be registered as a dangerous dog and the owner must pay a \$50 annual registration fee.
- Microchipping. The owner must pay to have the dog microchipped by a veterinarian or licensed animal agency.
- Sterilization. The animal must be spayed or neu-

tered, at owner expense, before it is released to the owner.

- Confinement. The dog must be confined in a secure enclosure. Outside the dwelling or enclosure, the dog must be muzzled and restrained with a leash not longer than 4 feet long.
- All restrictions must be met within 15 days, and required information about the animal must be kept current and on file with the City Clerk.

What are the penalties?

- After a dog has been declared dangerous:
 - If a dangerous dog is found running at large, the owner will be fined a minimum of \$250 up to \$499. For a second offense in less than two years, the owner will be fined a minimum of \$500 up to \$1,000 and the dog will be impounded and destroyed.
 - If a dangerous dog attacks, assaults, wounds, bites or otherwise injures or kills a human, the owner will be fined at least \$500 up to \$1,000 and the dog

- will be impounded and destroyed.
 - If a dangerous dog attacks, assaults, wounds, bites or otherwise injures or kills a domestic animal, the owner will be fined at least \$250 up to \$500 and the dog will be impounded and destroyed.
 - The owner may face a jail sentence up to six months.
 - The dog will not be destroyed until after an appeal, if necessary.

ordinance alone. He said even though any breed can bite, dogs such as pit bull-type animals are more likely to cause serious injury or death.

Gwin also was concerned because the proposed law would allow any breed to be placed on a "dangerous dog" list and destroyed after a second violation. That could apply to a small dog whose bite could be treated by a simple bandage, but the animal would be destroyed after a second violation.

"Now Nana's beloved pet is gone," Gwin said.

Solander and Peine said law enforcement officers and the courts would have discretion to determine if an animal was truly dangerous. The law would allow for due process to give owners a chance to prove the animal is not a threat to society, such as if the animal was protecting its property, itself, its owner or its offspring.

Peine pointed out that even small dogs could cause serious damage.

"If I'm walking down the street and a chihuahua comes up and bites me, that's a problem," Peine said.

Commissioner Dan Morgan mostly stayed silent during Tuesday's discussion, but eventually said he felt Solander's

proposed ordinance was an improvement. Commissioners asked Solander to make some changes, such as requiring owners of a dangerous dog to maintain insurance that covers dog attacks. The Topeka model did not require insurance, but the city's previous ordinance did and all commissioners said

they would like to keep an insurance requirement. Solander also said he would take another look at Gwin's concerns about destroying a dog on second violation, even if the incident was minor. Solander was expected to make changes and present the ordinance again, likely at the city next meeting Aug. 28.

YOUR LIFE IS A STORY. TELL IT WELL.

Garnett Monument & Glass
126 West Fifth • Garnett, KS 66032
(785) 448-6622
Todd Barnes

TAX DEBTS • TAX PROBLEMS?

JO WOLKEN
Enrolled Agent
Representing Clients Before:
IRS Exam Division
IRS Collection Division
IRS Appeals Division

- Unfiled Returns
- Offers in Compromise
- Liens & Levies
- Innocent Spouse Relief
- Audit Reconsiderations
- Payroll Tax Problems

TAX - TIME TAX SERVICE, INC.
785-448-3056 • 415 S. Oak, Garnett

I SOLVE TAX PROBLEMS!

Obituaries

The Anderson County Review publishes full-length memorial tributes as submitted by families or funeral homes at a cost of 12¢ per word. A photograph is complimentary with this paid option. We also offer a short-form version containing only pertinent historical data at no charge. Please be sure to instruct your funeral home as to which version you'd like published, or contact the Review directly at (785) 448-3121, email review@garnett-ks.com.

THE MICHAEL FAMILY PUBLIC AUCTION
Saturday, August 25, 2012 • 10:00 AM 212 Elm Street in Colony, KS
Selling due to the death of Bill Michael. Lunch will be provided by Crest Football Team

ANTIQUES & COLLECTIBLES: #4 Stone jar (WH emblem), unusual, #4 Stone jar (star emblem), unusual, 1 Wooden cabbage cutter, Large old square trunk, Wooden chest, 2 antique wooden straight chairs (out of old Westphalia Knights of Columbus Hall), Old turned leg end table, Old foot stool, Nice bright #3 round metal wash tub, Griswold skillet, Several other cast iron skillets, Several old granite roasters & cookware pieces, 6 antique tin drinking cups (Moorman's), 3 sets of old fancy clear glass door knobs, Old metal skates, Ice tongs, Milk can, Several small steel traps, Old glass telephone insulators, Ball blue 1/2 gallon canning jar, Atlas blue qt canning jar, Old blue Mason qt canning jar (very unusual), Tall yellow flower vase #223, Several old planters (Haegar pottery), Coke glasses, 2 Antique kerosene lamps, Hand painted Japan dishes, 4 Old Japanese rose pattern ladie's ash trays (unusual), Pitcher & bowl set, Lg clear covered glass refrigerator dish, Crystal, Candy dishes, Fruit bowl, Glass bells, Longaberger baskets, Longaberger cups, Some 50's-60's stuffed toy bears, dogs. **APPLIANCES & KITCHEN ITEMS:** Hotpoint refrigerator w/top freezer 18.2 cu ft, JC Penny refrigerator w/top freezer, Kenmore 15 cu ft chest freezer, Roper lg capacity washer, Kenmore gas clothes dryer, Emerson microwave, Kitchen step stool, Set of brown Club Aluminum cookware, Kitchen utensils, Cannister sets, Pampered Chef apple peeler, Pampered Chef stoneware, Large Pampered Chef measuring cup, Set of Wheat pattern Pyrex mixing bowls, Corningware covered baking dishes, Large Pyrex glass roaster, Set of Daisy stoneware dishes, Set of Corelle dishes, 1 Lot Oven pans, Bakeware, Tupperware, Coffee makers, Electric mixer w/stand, Small electric juicer, Salad shooter, Blender, Small electric grill, Waffle iron, West Bend bread machine, George Foreman grill, American Harvest food dehydrator, 12 qt Mirro pressure canner, Canning jars & new canning lids. **DINING FURNITURE & ACCESSORIES:** Large modern wood dining table w/leaves & 5 chairs, Extra nice 3 door lighted china hutch, Wooden dinette set w/5 chairs, Set of 16 Wm Rogers 1881 stainless silverware, Set of 16 Eternal Love fine china, 16 Blue stemware water, glasses, 16 Wine glasses, Relish plates. **OTHER HOUSEHOLD FURNITURE & ACCESSORIES:** Brown floral pattern couch & matching chair, Large brown recliner, Love seat, Blue recliner, Sleeper sofa, Nice coffee table w/doors & matching hexagon end table, Nice glider rocker, Nice corner shelf, Nice modern wood storage cabinet, 1950's 3 pc walnut bedroom set, (full sized bed, 6 drawer dresser w/mirror, & 4 drawer chest), 3 pc Queen sized bedroom set (bed,

dresser, & chest), 1 Complete full sized bed, Modern 4 drawer chest, 9 drawer Pine dresser, 2 Night stands, Emerson television (4 years old), Small television, TV stand, End tables, Kirby G4 Vacuum w/shampooer, Singer sewing machine #9410 w/nice cabinet, Cabinet stereo, Occasional chair, High back padded office chair, Dell computer monitor, Wooden computer desk, 1 kneehole desk, 2 drawer filing cabinet, Electric paper shredder, Cannon PowerShot A620 digital camera, RCA Camcorder, Panasonic Radio/tape player, GE Radio w/tape & CD player, VCR/DVD player, Movie tapes, Games, 1 Lot books, Some Louis Lamour books, Ladie's purses, 1 Lot baskets, Angel decorations, Christmas decorations, Nativity set, 2 Gold colored electric lamps, 2 Green electric lamps w/matching hanging light, 1 Lot good blankets & bedding, 1 Lot good towels, 1 Lot home décor, Small Sentry safe w/key, Fireplace tools, Roadmaster exercise cycle w/monitor. **TOOLS & GARAGE ITEMS:** Small 2 hp Bronco portable air compressor (6 gallon tank), 3.5 hp Campbell Hausfeld Workhorse portable air compressor, Several air impacts, 12 volt impact, Pro Lift floor jack, 10", Shopcraft table saw 1.75 hp, Craftsman 16" scroll saw (bench model), 1/3 hp Black & Decker hand belt sander, Small Black & Decker electric hand sander, Router table, Skil Saw, Cordless drill, Small battery charger, 6" electric bench grinder w/stand, Ridgid pipe cutter, Pipe wrenches, Torque wrench, Adjustable end wrenches, 1 Lot misc. wrenches, 7 drawer metal tool cabinet (bench model), 1 Lot sockets, Misc. tools, Wood bits, Car ramps, Mechanic's creeper, Shop scooter, Jack stands, Come-a-long, Tire bead breaker, Shop vac, Metal folding table, Extension cords, Shop cabinet, 2 Aluminum grain shovels, Like new shop broom, Iron pry bar. **RIDING MOWER / LAWN & GARDEN ITEMS:** White riding mower LT15, 15.5 hp OHV motor (about 3 years old), Wheel barrow, Lawn spreader, Tomato wires, Rakes, shovels, & garden tools, Pruners, Pole tree trimmer (like new), Garden hoses, 1 garden hose cart w/hose. **MISC. ITEMS:** 4 H show box, Shop built 5th wheel pickup tail gate, 20 ft aluminum extension ladder, Kenmore gas BBQ grill, Bug zapper, Fishing equipment, Golf clubs & bag, Insulated coolers, Coleman metal camping lantern w/box, Stadium seats, Midland CB base, Wrought iron porch railing, Wrought iron plant stand, Rubbermaid trash cans. **BUILDINGS (TO BE MOVED):** 10 X 10 metal lawn storage shed, 12 X 14 wooden garden shed w/yellow siding. **LARGE AUCTION OF QUALITY ITEMS.**

KURTZ AUCTION & REALTY SERVICE
AUCTIONEERS: DARWIN W. KURTZ ...785-448-4152
COL. BEN ERNST... 620-364-6786

TERMS: CASH or Good Check
• Nothing is to be Removed Until Settled For • Not Responsible for Accidents or Loss
Announcements Made Sale Day Take Precedence Over the Printed Advertising.

Doug Sheern.

Ann was preceded in death by her parents and a sister Chris Sheern.

Graveside funeral services will be held at the Cornelison Cemetery, east of Reserve, Kansas, at 10:30 a.m. Wednesday, August 22. The service will be conducted by Pastor Shane Spangler of the Bethany United Church of Christ in Hiawatha.

The family has requested in lieu of flowers to please send memorial contributions to Morrill Free Public Library (Hiawatha); Bethany United Church of Christ (Hiawatha); or NEK Hospice (Hiawatha), and may be sent in care of Chapel Oaks Funeral Home, 124 S 7th St., Hiawatha 66434.

A special message may be sent to the family at www.chapeloaksfuneralhome.com

Don Quixote and the 2012 elections

Despite the fiscal dragon, candidates tilt at windmills

In each campaign appearance from now until Nov. 6, we respectfully ask that the backdrop for both sides of the political debate be a windmill and a scale model of the Parthenon.

Let them be constant reminders of what we need to accomplish at every level of government: Spain and Greece are showing us just how bad things can be.

The European financial crisis is continuing to worsen, not improve. The economy of the 17-country euro bloc remains in stagnation, if not flat-out recession. This well after nations across the globe implemented recovery policies ranging from steep austerity measures to currency manipulation.

In this global economy, when one massive component of that fiscal pie falters, the rest sours. And recovery in the United States is slowed by European failures -- massive unemployment rates and unmanageable debt being the result.

Spain and Greece are no upstart nations -- they are cradles of significant portions of earth's civilization. Lessons must be learned.

But, like Don Quixote, Obama/Biden/the left and Romney/Ryan/the right will tilt at windmills. Names will be called. Television "news" anchors will dissect their appearance, their tone, the color of their shirts. Potential first and second ladies will be asked about their pets. We will talk of chicken sandwiches and the Cayman Islands. We will discuss college transcripts and Hawaiian documents. Epithets such as Solyndra and Bain Capital will be banded about.

Windmills. These giants that blind us to real danger.

And while politicians dash their blades upon anything they think will bring them a point closer in a key county in a key district in a key electoral state, the reality of the issue won't change soon.

Unless America changes its ways, we are destined to have an economy that mirrors Spain, Greece, the European Union. In Kansas, we apparently have opted for a gutting of every function of state government, with the future of public services likely falling upon other taxing bodies in the future. Dissidents -- moderate Republicans and Democrats -- have been virtually silenced.

Time will tell whether the Sam Brownback model of government functions or falters. We are apprehensive to say the least.

The next four years will be a critical crossroads, a time to decide.

Who are we? Who shall rise and who shall be left to perish?

Shall we remain a strong, independent world economic power? Shall we learn the lessons from across the Atlantic and make sensible changes to the way we do business as a government and as a country?

Or shall we watch the pillars of our economy continue to crumble while those who should lead us are content to bleed us -- so long as their poll numbers hold?

November's election looks to be more about who Americans will vote against, not who they wholeheartedly support, which does not bode well.

But, as always, we will cross our fingers, continue to ask questions and hope those seeking to lead this great nation will have its best interests at heart over their own.

And we will see windmills for what they are, and never forget the ruins where there once stood greatness.

— Editorial by Ron Fields, THE HAYS DAILY NEWS



Serious, honest presidential debate will elude us

BY RICH LOWRY

NATIONAL REVIEW

Democrats believe fervently in the folly of Paul Ryan's ideas, yet somehow can't speak about them truthfully. They are confident they can destroy Ryan -- not because they think they can win the debate over his proposals on the merits, but because they are certain they can distort those proposals with impunity.

Mitt Romney's inspiring (and inspired) choice of the Wisconsin budget maven as his running mate had commentators on both sides welcoming a clear choice for the country. Romney had done us a favor, they said, in ensuring such a stark clash of visions. The League of Women Voters would approve.

This Hallmark sentiment is nice, though naive. The battle of ideas will be as unsightly and dishonest as the battle over Bain Capital. If Democrats will lie about Mitt Romney killing a woman, it's only a matter of scale to lie about him unloosing a near-genocidal assault on America's seniors.

Immediately upon Ryan's selection, Obama campaign manager Jim Messina scored Ryan for his "budget-busting tax cuts for the wealthy" (except that there aren't tax cuts, budget-busting or otherwise), for bringing to an "end Medicare as we know it by turning it into a voucher system" (except there's no voucher, and Medicare benefits would stay exactly the same), and for "shifting thousands of dollars in health care costs to seniors" (except the Ryan plan doesn't apply to today's seniors, nor will it shift costs onto the seniors of the future).

The Democrats never want to admit three things about Ryan's Medicare plan. First, that it doesn't affect anyone over age 55 and won't kick in for another 10 years. Conceding this makes the job of frightening elderly voters trickier, so it is best ignored.



Lowry

"What the Ryan plan offers, most fundamentally, is a vision of a reformed entitlement state that won't require massive new tax increase or debt to fund."

Second, that the current version of the Ryan plan gives future beneficiaries the option to keep traditional Medicare. They will choose among a menu of insurance plans, including a fee-for-service federal option, all of which will be required to offer at least the same level of benefits as Medicare now. The federal government will pay everyone's premiums up to a level matching the second-lowest-priced plan in a given area. There's no reason a beneficiary will have to pay more (although he can choose a pricier plan and pay the difference).

Third, that Ryan and President Barack Obama cap overall Medicare spending at the same level. The president is adamant that the growth of Medicare is unsustainable -- and rightly so. Everyone acknowledges that the program is the foremost driver of our long-term debt. Both Ryan and the president use the same formula of roughly GDP growth plus inflation for setting Medicare's global budget.

What the Ryan plan offers, most fundamentally, is a vision of a reformed entitlement state that won't require massive new tax increases or debt to fund. Ten years from now, federal spending still would be at a higher level of GDP than it was at the end of the Clinton years.

This vision -- now at the center of the campaign -- deserves a serious, honest debate, and will assuredly not get it.

Rich Lowry is editor of the National Review.

Brownback faces pesky new problems

Ever see those whack-a-mole games in the mall where you hit a mole on the head with a stick and it pops up somewhere else? A little frustrating, unless of course you imagine the mole is the idiot who parked so close to your car so you had to wriggle out the passenger-side door.

Well, whack-a-mole has come to Kansas government at the state and local levels.

The Legislature last session whacked the income tax mole on the head, and it went away.

But, the government spending mole has popped its head up from another hole.

The governor's plan to whack that new mole is to order state agencies to cut their budgets by 10 percent for the next fiscal year—the one that starts July 1, 2013, and which Gov. Sam Brownback will make public in January.

The 10 percent cut? Well, it's mostly going to be done quietly until the budget is released. After all, those Cabinet secretaries who will draw up those budget requests all have assigned parking spaces because Brownback hired them, and he can fire them if they become troublesome.

So, we're in a quiet period while agencies look for ways to save 10 percent of their budgets and figure out what they can do and what they can't do with less



by Martin Hawver
KANSAS STATEHOUSE COLUMNIST

money. That generally amounts to figuring out what program to eliminate or pare down and to comparing the political storm that different cuts will cause.

Key here: Choose the program to shave or eliminate that will cause the least public rancor...which of course, moves uphill to the governor's office. Better that a Cabinet secretary whacks a mole than the governor.

If the governor's Cabinet secretaries figure out how to cut their budgets by 10 percent—and we figure some will be allowed by the governor to whack a little less and some will be allowed to whack a little more—a new mole pops up.

That new mole? Its local units of government; the cities and counties and school districts and every other unit of government that gets a place on your property tax bill. They're going to be

The Anderson County Review's

Phone Forum

Record your comments on the topic of your choice at (785) 448-2500, press option 1. You do not need to leave your name. Comments will be published anonymously. Calls may be edited for publication or omitted.

I have been noticing the new sidewalks they're building along Maple Street and I think those guys have done a nice job with them, they look real nice, especially to have been building them in this kind of hot weather. And I admit I've really not paid much attention to the whole issue about building them other than that the city got forced to do it by the feds or whatever because Mr. (deleted) complained about it. But I will say this: It seems like they went a long way out of their way going so far south and running sidewalks back north to the grocery store when they could have just gone up Park Road, and I guess I don't understand. I never heard a good reason why you couldn't just come up Park Road. Just my two cents worth. Thanks.

I think our city officials ought to practice what they preach. They're asking citizens to shop in town. Think about it. Think about it.

The demise of the ethanol plant was fairly predictable. Government subsidies for these type of endeavors, as will eventually hit for the wind-type generated plants, are going away. The corn crisis just made it worse, so I would suspect your ethanol plant will never be back. The investors will lose their money, Garnett will lose their revenue. I don't know how many businesses have left Garnett in the past 10 years, but they need to make better planning, put better people in office. That's one reason I went ahead and moved out of the county.

Yes, I was just out for a country cruise this evening and was just amazed that someone that has livestock has drained their pond and now has solar powered water coming from our reservoir. Do Anderson County people not have to pay for that? Can we just come get that if we have solar panels? Just a question and a thought. Thanks.

So why didn't the students get new desks at this new school? It's our taxpayers money paying all this money, I would have like to have seen my kids in new desks.

I want to thank everybody that's donated items to the animal shelter that we volunteer at. Thank you so much.

Hey, just wanted to give a speed trap update to my fellow commuters. The Garnett police are trying to pay for their new cruiser. The west side of town, from the county shop to where the road turns west. Typically eastbound in the mornings, westbound in the evenings. Drive carefully, and remember I'm pulling for you. We're all in this together.

popping up because their members are the ones you're going to see in the coffee shop or grocery store to complain to that something isn't getting done.

We're figuring that those local units of government officials are going to start drinking at home rather than at the local bar just to keep out of sight.

And, what other mole pops up? If local units of government or school districts raise their property tax rates to make up for the reduction in state aid trickling down to them, that mole will be your December 2013, first-half property tax bill. And that's a mole that property taxpayers are going to want to whack.

Oh, and that final whack will be at the legislative mole, which will be blamed for all the other whacking going on, and that mole will be whacked at the 2014 election for members of the Kansas House, the governor, nearly anyone who had anything to do with property taxes going up.

...Unless it was a legislator who parked too close to your car so you had to squirm out of the passenger side. Then, you get two whacks at him/her.

Syndicated by Hawver News Company LLC of Topeka; Martin Hawver is publisher of Hawver's Capitol Report—to learn more about this statewide political news service, visit the website at www.hawvernews.com

FORMERLY THE GARNETT PLAINDALER, THE ANDERSON COUNTY REPUBLICAN, THE REPUBLICAN-PLAINDALER, THE GARNETT JOURNAL PLAINDALER, THE GARNETT REVIEW, THE GREELEY GRAPHIC, THE ANDERSON COUNTIAN.



Published each Tuesday by Garnett Publishing, Inc., and entered as Periodicals class mail at Garnett, Ks., 66032, permit number 214-200.

Postmaster: Send address corrections to: The Anderson County Review P.O. Box 409 - Garnett, KS 66032 (785) 448-3121



THE ANDERSON COUNTY REVIEW 06-29-2010 / Photo Submitted

Spencer Walter played in the Everett Vinzant/John Cosnotti Memorial Golf Tournament at Overland Park Golf Course. It consisted of 3 days of stroke play. Day 1 Spencer shot 3 under par 67 for share of the lead. Day 2 Spencer shot a 76 dropped him to 6th place. Day 3 Spencer shot even par 70 to raise back up the leader board to 4th.

DROUGHT...

FROM PAGE 1A

breaks, the worst in a line near the laundromat on U.S. 59 that kept crews working from 1 a.m. to 11 a.m. Water was shut off to several area businesses during that time. Another break in an 8-inch main near the city water plant took crews about six hours to repair. City officials weren't able to estimate how much water was lost, but Martin said it was a lot.

Although the city hasn't received many reports of water leaks on residential or commercial properties, they have received reports of broken gas lines attributed to the ground settling. Martin said she also has heard people are having foundation problems for the same reason.

People who use the Prairie Spirit Trail within the Garnett city limits also have reported large cracks in the asphalt along the trail, some of them large enough to swallow a bicycle tire. Martin has discussed the problem with local Wildlife and Parks officials, who suggest waiting until rain helps close the gaps to some degree naturally. The city expects to apply for a grant to help pay costs of resurfacing parts of the trail later this year.

City officials also have been keeping an eye on streets that could be damaged by soil movement or an underground water leak. However, most of the problems on city streets have been caused by natural wear and tear, and the city has plans to fix problem areas this year, Martin said.

Let the Review do all the work for you!
eBay
 Call (785) 448-3121

GOVERNMENT...

FROM PAGE 1A

the value of land for agriculture use. The value of property used for agriculture purposes, especially crop grounds, has started to turn around after eight years of declining value, Hermreck said.

The increase in the county's valuation translates to a lower tax rate for county property owners. Because the county is worth more money, taxes are generated from a larger pool of value.

Both Anderson County and USD 365 have recently published 2013 budgets with a lower mill levy, which is the multiplier applied to assessed value which then yields taxes paid for government services. In both cases, actual budget expenditures were slightly higher than the previous year, but because a higher valuation means tax dol-

lars stretch further, mill levies dropped. USD 365 also benefited from a special funding break because it built a new school. However, USD 479 in the southern part of the county also saw an increase in its valuation, but the district was forced to increase its mill levy because of less state funding.

In USD 365, the mill levy dropped to 53.721 in 2013 from 54.421 in 2012. In USD 479, the mill levy increased to 34.062 for 2013, up from 32.046.

Anderson County Commissioners were able to drop the mill levy to 86.569 in 2013 from 89.186 in 2012.

But the same thing doesn't apply in the City of Garnett. Unlike rural areas that saw new oil wells, the city doesn't get a boost from oil production. The city's valuation actually dropped about \$118,000, to \$18,062,587 this year, down from \$18,180,867.

The city is facing some difficult decisions that have made this budget the most challenging Joyce Martin, city manager, said she has ever faced. Several issues have worked against city officials as they attempt to work out a budget without raising taxes or increasing service fees, Martin said.

The city has lost or will lost three major businesses in the two past years or so: Astro Cap Manufacturing was destroyed by fire in February 2011 and moved to Ottawa, Kids Creations moved to Michigan late last year; and the East Kansas Agri Energy ethanol plant announced plans to suspend production for possibly a year because of decreased corn supplies and poor market conditions. In addition to losing jobs and tax revenue from some of those businesses, the city also faces the loss of its largest utilities customers. The ethanol

plant alone paid \$320,000 in utilities in the past year. The city also could lose another \$163,000 from its general fund because of potential loss of a business commodities tax paid by the ethanol plant.

"We as a community are going to have a big problem," Garnett commissioner Preston Peine said at last week's city commission meeting. "Our city may be in a lot of trouble moving forward in the next 10 years."

Martin told commissioners she and staff were trying to pare the budget as much as possible, but cuts made in recent years already left the city with little room for cuts. Most of the budget is for salaries and services, Martin said. She and commissioners would meet soon to work on the budget in more detail.

On the county budget side, commissioners submitted a

budget that would spend about \$100,000 more than last year. The county expects to spend about \$9,484,621 in 2013, up from \$9,345,570 in 2012. The increase comes mostly from increased expenses in the general fund, which provides basic services such as salaries and law enforcement. Commissioners slashed about \$70,000 from the capital outlay fund, and earlier this year sought proposals for ambulance service in an attempt to cut expense in that area. Commissioners eventually decided to continue with the current ambulance system, at least for now, and see if they could find a better deal later. The county also cut about \$30,000 from its Rural Fire Equipment Reserve budget. Other county budgets items were similar to last year.

Mentors needed

GARNETT - This month as children go back to school all across Kansas, the need for school-based mentors will increase dramatically. The school-based mentoring option is one of the most popular programs at Big Brothers Big Sisters because of its flexibility for volunteers. Volunteers are asked to meet with a child once a week at the child's school during lunch or at the end of the school day. The mentor can help with school work, play games or just listen to things going on in the child's life. This little bit of time makes a huge difference in the life of the child.

New data from Big Brothers Big Sisters of America, developed with leading researchers, substantiate that the mentoring program has positive academic, socio-emotional and behavioral outcomes for youth who face adversity. Reports show improvements for youth during the first year of enrollment in the Big Brothers Big Sisters program in the areas of educational success, avoidance of risky behaviors and social-emotional competency.

"This is such a critical time of year for children. It is important to get the school year started on the right foot and a mentor can help do that for a child in need. If you have ever thought of volunteering, now is the time," said Jennifer Keith, Community Director. "We have 22 children waiting for a mentor right here in Anderson County. Our goal is to find a mentor for each of them early in the school year to maximize the positive academic and behavioral outcomes. Children with a mentor do better in school and stay in school longer. That is something that can't wait."

For more information on how you or your company can get involved with mentoring, go to www.anderson.kansasbigs.org or call (785) 304-1811.

Notice to declare lease void

(First published in The Anderson County Review Tuesday, August 14, 2012)

TO: DD ENERGY, INC.

I, John J. Bengé, President, Northwest Missouri Land Company, a Missouri corporation (hereinafter "NMLC"), the undersigned owner of the following described land situated in Anderson County, Kansas, to wit: Southeast Quarter (SE 1/4) of Section 27, Township 21, Range 21 in Anderson County, Kansas ("Real Property"), and Lessor under the Oil and Gas Lease, dated May 15, 1978, originally between John M. Eastburn, as Lessor, and David R. Victorino, as Lessee (hereinafter the "Lease") does, for the second and final time, hereby notify you that the terms of the Lease have been broken by the current operators/owners thereof, which I understand to be DD energy,

Inc., Falun Oil & Gas, LLC and/or PO & G Resources, LP, that NMLC does hereby elect to declare, did and does again declare, that the Lease is forfeited and void and that, unless, within twenty (20) days from this date, you notify the Register of Deeds of Anderson County, Kansas, as provided by law, that the Lease has been forfeited, I will re-file with said Register of Deeds an Affidavit of Forfeiture, as provided by law. Furthermore, I hereby demand that you execute, or have executed, a proper surrender of the Lease and that you file the same of record in the Office of the Register of Deeds of Anderson County, Kansas within twenty (20) days from this date.

John J. Bengé, President
 Northwest Missouri Land Company

ag143

HOSPITAL...

FROM PAGE 1A

election."

The change in time table also de-politicizes an expensive hospital vote during what's expected to be a larger than usual election turnout in November, and one which will decide the outcome of two county commission seats up for election. Winners of the 2nd and 3rd District commissioner elections will take office in January 2013, with the bond issue to follow presumably in April.

The proposal was announced

on the Review's Facebook page to initially mixed reviews from those who commented on the site. Proponents say ACH, constructed in 1949, is structurally outdated and in soon-to-be failing condition, and to the point that its projected maintenance costs over the next 10 years will exceed the cost of bond payments to construct a new facility. Opponents have protested the impact of the bond issue on local property taxes.

ACH employs 186 workers with an annual payroll of \$6.8 million.

- The Perfect Gift -



Phone Forum T-Shirts \$24.95

Capture the humor, grit and public conscience of The Anderson County Review's most popular feature.

Show your support for free speech in Anderson County!



Pre-Order today by calling (785) 448-3121!

Thanks From Dr. Leitch
 Thank you to my supporters and voters who gave me a win in the primary. Thanks also to Pat and his supporters for their interest in local government and running a clean campaign. I hope we can be united for the election in November to get a NEWER and PROGRESSIVE commission CHANGE.

Paid political advertisement by David Leitch for County Commissioner, David Leitch, Treasurer

Valnet (888) 332-1616
 We Connect You
INTERNET+
 • FREE Dial-Up Accelerator • NO CONTRACT
 • FREE UNLIMITED Phone Technical Support • NO Taxes Added
 • FREE Local Access • NO Up-Front Fee
 • Set-Up in Minutes!
\$19.95
 Unlimited Access

Let the Review do all the work for you!
eBay
 Call (785) 448-3121

County publishes notice of delinquent property taxes

THIS IS NOT A TAX FORECLOSURE SALE
NO PUBLIC AUCTION IS HELD**
Property is NOT SOLD AT PUBLIC AUCTION until three years have passed from the 1st publication of delinquent tax on a parcel.

Notice is hereby given that so much of each tract of land described in the following list located in Anderson County, Kansas, as may be necessary for the purpose, will be on the first Tuesday in September, 2012, bid off by one as County Treasurer of said County, in the name of and for Anderson County, at my office in the courthouse, in Garnett, Kansas, for the taxes and charges thereon, for the tax year 2011.

/s/ Dena M. McDaniel
Anderson County Treasurer
STATE STATUTE PROVIDES THAT ONLY THE COUNTY MAY BID; NO PRIVATE BIDS PERMITTED. EACH TRACT OR LOT IS SUBJECT TO A FEE OF \$16.00 AND 7% INTEREST PER ANNUM PRORATED.

Publication indicates tax payments through July 31, 2012.
Any payments made after this date are not reflected in this publication.

BERTHA MAE ADAMS 1-00501090 467.88 % HONEY WHITCOMB KINCAID, 536, T22, R20, BLOCK 16, Lot 6 - 8" Subd-KINCAID Blk-16 Lot-6 Sec-36 Twp-22 Rng-20

CELEPH C ADAMS 1-00201790 1467.58 C D SCHULTE Subd-WOHLER ADD Blk-2 Lot-1 Sec-25 Twp-20 Rng-19

RALPH R ADAMS 1-08000750 7.02 Subd-RAILROAD ADD TO WELDA Blk-26 Lot-1 & E2 N50' Sec-35 Twp-21 Rng-19

RALPH R ADAMS 1-08100070 Acres-158.90 362.26 NW4 EX RD Sec-29 Twp-21 Rng-19

RALPH R ADAMS 1-08100100 Acres-161.00 393.36 SE4 EX RD Sec-29 Twp-21 Rng-19

RALPH R ADAMS 1-08100160 Acres-247.80 566.99 NE4 & E2 NW4 EX RD Sec-32 Twp-21 Rng-19

THOMAS L & ROBIN K ADAMS 1-03000280 Acres-118.90 295.98 W2 NW4 & NE4 NW4 LY N & W CRK EX RD Sec-12 Twp-20 Rng-19

THOMAS L & ROBIN K ADAMS 1-03000290 Acres-40.60 29.32 SE4 NW4 EX RD Sec-12 Twp-20 Rng-19

THOMAS L & ROBIN K ADAMS 1-03000350 Acres-16.80 402.72 COMM 457.3' W NE COR SE4, TH ALG W R2' LN' HWY 59 S791.1' TO POB, 10 N0 DEGREES W906.5', W263.1' N80 DEGREES W273.6' Sec-12 Twp-20 Rng-19

THOMAS L & ROBIN K ADAMS 1-03000350A Acres-77.70 84.58 SE4 LYG W OF HWY 59, EX BEG SW COR SE4', N800', E1576' TO R/W OF OLD HWY, SWLY ALG' R/W 803', W1490' TO POB & EX COMM 457.3' W NE COR" Sec-12 Twp-20 Rng-19

AIMTOR PROPERTIES,LLC 1-00216150 525.18 LT 10,W14' LOT 11 & E2 VAC ALY BET LTS 9 & 10" Subd-CHAPMANS ADD TO GARNETT Blk- 15 Sec-30 Twp-20 Rng-20

LARRY SCOTT & SONYA LIN ALLEN 1-08001120 Acres-214.80 903.22 S2 NW4 & SW4 EX BEG 571'S NE COR SW4 S252.50',W500',N250'E TO POB EX E800' OF 5990' OF SW4 & RD" Sec-33 Twp-21 Rng-19

LARRY SCOTT & SONYA LIN ALLEN 1-08001160 Acres-118.90 613.12 W3/4 OF SE4 EX RD Sec-33 Twp-21 Rng-19

LARRY SCOTT & SONYA LIN ALLEN 1-08001170 Acres-39.40 259.46 E2 E2 SE4 EX RD Sec-33 Twp-21 Rng-19

LARRY SCOTT & SONYA LIN ALLEN 1-08001200 Acres-78.20 527.22 W2 SW4 EX RD Sec-34 Twp-21 Rng-19

LARRY SCOTT & SONYA LIN ALLEN 1-08002410 Acres-80.90 828.96 E2 NE4 EX RD Sec-04 Twp-22 Rng-19

LARRY SCOTT & SONYA LIN ALLEN 1-08002420 Acres-80.10 492.50 W2 NE4 EX RD Sec-04 Twp-22 Rng-19

KIMBERLY KAY ANDERSON & DAVID C HEIDRICH 1-06101500 Acres-453.78 536, T21, R17, ACRES 2.2, BEG NW COR SE4" S360',E270', N360',W270' TO POB EX RD Sec-36 Twp-21 Rng-17

JUSTIN ASHBURN 1-00219190 1.32 % MARY FLEMING MANDOWI ADD TO GARNETT, S31, T20, R20," BLOCK 26, Lot 4 E OF RR, SECTION 31 TOWNSHIP 20 RANGE 20" Subd-MANDOWI ADD TO GARNETT Blk- 26 Lot-4 E OF RR Sec-31 Twp-20 Rng-20

JUSTIN ASHBURN 1-00700560 13.70 % MARY FLEMING S36, T21, R17 Sec-36 Twp-21 Rng-17

VIOLET M ASKINS 1-00215340 1218.32 LT 4 & V2 VAC ALY BET LTS 4 & 5" Subd-CHAPMANS ADD TO GARNETT Blk-5 Sec-30 Twp-20 Rng-20

KEITH BABCOCK 1-00100090 65.34 COLONY BLOCK 11 BEG 60'N & 30'W OF" NW COR N TO N LN NW4 E TO HWY SEALG HWY" HWY TO N LN FIRST ST WY TO POB SECTION 06 TOWNSHIP 23 RANGE 19 Subd-COLONY Blk-11 Sec-06 Twp-23 Rng-19

DONALD L & ANNA K BADDETS 1-10200080 Acres-118.00 362.30 S24, T22, R19, ACRES 118, NW4 SE4 & S2 SE4 EX RD" Sec-24 Twp-22 Rng-19

DONALD L & ANNA K BADDETS 1-10500980 Acres-328.60 2283.50 S31, T22, R20, ACRES 328.6, N2 SEC EX RD Sec-31 Twp-22 Rng-20

IAN M & GENINE M BAILEY 1-00218600 133.50 MANDOWI ADD TO GARNETT, S31, T20, R20," BLOCK 5, LTS 17,18,19,20 & E10'LT 16" SECTION 31 TOWNSHIP 20 RANGE 20 Subd-MANDOWI ADD TO GARNETT Blk-5 Sec-31 Twp-20 Rng-20

DALE P & MARGARET A BAKER 1-00100300 320.32 COLONY BLOCK 18 Lot 7, 8 & 9 " SECTION 06 TOWNSHIP 23 RANGE 19 Subd-COLONY Blk-18 Lot-7, 8 & 9 Sec-06 Twp-23 Rng-19

JOHN T BANKS 1-00211490 844.84 GARNETT BLOCK 13 Lot 52 LTS 11 - 12" SECTION 30 TOWNSHIP 20 RANGE 20" Subd-GARNETT Blk-13 Lot-52 LTS 11 Sec-30 Twp-20 Rng-20

LARRY SPEARS, SONDR BAUGHER 1-00209220 69.22 GARNETT BLOCK 40 Lot Block Info 3 & E2 LT 4 SECTION 30 TOWNSHIP 20 RANGE 20 Subd-GARNETT Blk-40 Lot-3 & E2 LT 4 Sec-30 Twp-20 Rng-20

SONDRA S BAUGHER & LARRY L SPEARS 1-00209230 80.86 GARNETT BLOCK 40 Lot Block Info 5 & W2 LT 4 SECTION 30 TOWNSHIP 20 RANGE 20" Subd-GARNETT Blk- 40 Lot-5 & W2 LT 4 Sec-30 Twp-20 Rng-20

MARVIN G BAUMAN 1-00701360 469.82 MERRILLS ADD TO WESTPHALIA, 536, T21," R17, BLOCK 16, Lot Block Info 12,13,14 & 15 SECTION 36 TOWNSHIP 21 RANGE 17 Subd-MERRILLS ADD TO WESTPHAL Blk-16 Lot-12,13,14 & 15" Sec-36 Twp-21 Rng-17

STEVEN R & IVY D BEALS 1-00208920 53.44 GARNETT, S30, T20, R37" LT 19 Subd-GARNETT Blk-23 Lot-7,8 & 9 Sec-06 Twp-23 Rng-19

STEVEN R & IVY D BEALS 1-00208930 412.40 Subd-GARNETT Blk- 23 Lot-20 & E3'LT 19 Sec-30 Twp-20 Rng-20

VERNON N & ETNA MAE BELEV 1-00212340 855.76 % GERALD E & MARIE EVE GREENWELL GARNETT BLOCK 29 Lot 19 SECTION 30 TOWNSHIP 20 RANGE 20" Subd-GARNETT Blk- 29 Lot-19 Sec-30 Twp-20 Rng-20

ELIZABETH MARIE BELL 1-00209070 487.98 % RICK BELL GARNETT BLOCK

22 E30'LT16 & W16'LT17" SECTION 30 TOWNSHIP 20 RANGE 20 Subd-GARNETT Blk-22 Sec-30 Twp-20 Rng-20

CLARON E & SHERRY A BENJAMIN 1-00210110 2111.92 S30 T20 R20 Sec-30 Twp-20 Rng-20

BENNETT GRAIN FARMS 1-10500572 552.31 S22,T22,R20, SW4 & S2 NW4 EX RD Sec-22 Twp-22 Rng-20

JERRY L & DONNA M BENNETT 1-03100980 Acres-116.50 945.22 S33,T20,R19, ACRES 116.5, SE4 NW4 & E2" SW4 EX BEG SE COR SW4,W914.3',N195" ,E125',N80.7' E789.3',S275.7' TO POB EX RD" Sec-33 Twp-20 Rng-19

JERRY L & DONNA M BENNETT 1-05100990 Acres-62.70 160.51 S12,T21,R19, ACRES 62.7, BEG NW COR" SE4 E2640', S1056' W2640',N1056' TO POB EX RD" Sec-12 Twp-21 Rng-19

JERRY L & DONNA M BENNETT 1-11100130 Acres-82.50 173.51 S24, T22, R20, ACRES 82.5, S2 NW4 EX RD Sec-24 Twp-22 Rng-20

ROBERT & MARY BENNETT 1-00500590 28.10 KINCAID, S36, T22, R20, BEG 80'E SE COR" BLK 2, N100' E265', S100',W265' TO POB Subd-KINCAID" Sec-36 Twp-22 Rng-20

CURTIS D BETTINGER 1-03500760 Acres-77.10 1422.94 505, T20, R20, ACRES 7.7, BEG SE COR SW4" N 528',W 660',S 528'E TO POB Sec-05 Twp-20 Rng-20

DANIEL BISHOP 1-00204500 19.74 S19, T20, R20, GOLF CART SHED #26 Sec-19 Twp-20 Rng-20"

MAX D & ROBERTA A BORROR 1-00216210 316.90 % MAX ROCKERS CHAPMANS ADD TO GARNETT BLOCK 14 LTS" 9,10 & VAC ALY BET LTS 8,9 SECTION 30 TOWNSHIP 20 RANGE 20" Subd-CHAPMANS ADD TO GARNETT Blk-14 Sec-30 Twp-20 Rng-20

CHRIS & DIANA BOWEN 1-00217280 825.48 GARNETT, S30, T20, R20, BLOCK 56, Lot 20" - 24 S RR, SECTION 30 TOWNSHIP 20 RANGE 20" Subd-GARNETT Blk-56 Lot-20 Sec-30 Twp-20 Rng-20

ZELMA BOWMAN 1-00218390 170.54 MANDOWI ADD TO GARNETT, S31, T20, R20," BLOCK 2, Lot 6 - 10 EX RR, SECTION 31 TOWNSHIP 20 RANGE 20" Subd-MANDOWI ADD TO GARNETT Blk-2 Lot-6 Sec-31 Twp-20 Rng-20

ZELMA BOWMAN 1-00218400 121.84 MANDOWI ADD TO GARNETT, S31, T20, R20," BLOCK 2, Lot 11 - 13, SECTION 31 TOWNSHIP 20 RANGE 20" Subd-MANDOWI ADD TO GARNETT Blk-2 Lot-11 Sec-31 Twp-20 Rng-20

FRED JR & MYRNA C BOYLES 1-00206740 3763.88 PARKLANE ADD TO GARNETT BLOCK 3 Lot 7 & 8 SECTION 30 TOWNSHIP 20 RANGE 20" Subd-PARKLANE ADD TO GARNETT Blk-3 Lot-7 & 8 Sec-30 Twp-20 Rng-20

DALE A BROOKS 1-00206090 2195.40 E.S. NICHOLLS SUBDIV GARNETT BEG 150" & E SW COR NE4 NW4 T2 E150',N475',W150" 5475' TO POB SECTION 29 TOWNSHIP 20 RANGE 20 Subd-E S NICHOLLS SUBDIVISION Sec-29 Twp-20 Rng-20

DALE A BROOKS 1-07200480 Acres-120.70 676.50 S30, T22, R18, ACRES 120.7, SW4 NE4 & N2 SE4 EX RD" Sec-12 Twp-22 Rng-18

DALE A BROOKS 1-08001960 Acres-8.20 1376.04 502,T22,R19,ACRES 8.2,NW4 NW4 W OF RR EX RD" Sec-02 Twp-22 Rng-19

VINCENT L & SHEILA BROWN 1-00701040 14.54 SUPPLEMENT TO MERRILLS ADD, S36, T21," R17, BLOCK 7, Lot 10,11,12, SECTION 36 TOWNSHIP 21 RANGE 17" Subd-SUPPLEMENT TO MERRILL ADD Blk-7 Lot-10,11,12" Sec-36 Twp-21 Rng-17

VINCENT L & SHEILA BROWN 1-00701300 8.90 MERRILLS ADD TO WESTPHALIA, 536, T21," R17, BLOCK 15, W80'LT 26 & 56' OF W80'OF" LT 27 SECTION 36 TOWNSHIP 21 RANGE 17 Subd-MERRILLS ADD TO WESTPHAL Blk-15 Sec-36 Twp-21 Rng-17

VIRGINIA BROWN 1-00210310 433.24 S30 T20 R20 BEG NW COR LT 8 T" NW" T70',E140', 570',W140', TO POB SEC 30 Twp-20 Rng-20

ROGER & DONNA D BRUMMEL 1-00214550 1138.48 GARNETT BLOCK 55 Lot W2 LT 8 & 9" SECTION 30 TOWNSHIP 20 RANGE 20 Subd-GARNETT Blk-55 Lot-W2 LT 8 Sec-30 Twp-20 Rng-20

DORIS BUNCH 1-08000700 1314.16 RAILROAD ADD TO WELDA, S35, T22, R19," BLOCK 25, Lot 1, 2, & 3, SECTION 35 TOWNSHIP 21 RANGE 19" Subd-RAILROAD ADD TO WELDA Blk-25 Lot-1, 2, & 3" Sec-35 Twp-21 Rng-19

JACQUELINE ANN BURGSTRUM ETAL 1-00209430 663.22 % CLINTON W & ROBERTA PARHAM GARNETT BLOCK 38 N2 LTS 1-2 & N2 E2" LT 3 SECTION 30 TOWNSHIP 20 RANGE 20 Subd-GARNETT Blk-38 Sec-30 Twp-20 Rng-20

JACQUELINE ANN BURGSTRUM ETAL 1-00217470 511.86 % CLINTON W & ROBERTA PARHAM GARNETT, S30, T20, R20, BLOCK 58, Lot 22" ,23 & 24, SECTION 30 TOWNSHIP 20 RANGE 20" Subd-GARNETT Blk-58 Lot-22,23 & 24 Sec-30 Twp-20 Rng-20"

SG-CITY OF BURLINGTON OKLAHOMA G4230 4-097001 0.44 % PROPERTY TAX DEPT STORED GAS

SG-CITY OF BURLINGTON OKLAHOMA G4230 4-097050 8.15 % PROPERTY TAX DEPT STORED GAS

SG-CITY OF BURLINGTON OKLAHOMA G4230 4-097051 2.46 % PROPERTY TAX DEPT STORED GAS

SG-CITY OF BURLINGTON OKLAHOMA G4230 4-097072 0.90 % PROPERTY TAX DEPT STORED GAS

SG-CITY OF BURLINGTON OKLAHOMA G4230 4-097080 29.62 % PROPERTY TAX DEPT STORED GAS

SG-CITY OF BURLINGTON OKLAHOMA G4230 4-097081 2.63 % PROPERTY TAX DEPT STORED GAS

SG-CITY OF BURLINGTON OKLAHOMA G4230 4-097102 4.06 % PROPERTY TAX DEPT STORED GAS

HOPE D BURNS 1-00500820 450.88 KINCAID, S36, T22, R20, BLOCK 26, Lot 7 & 8" Subd-KINCAID Blk-26 Lot-7 & 8 Sec-36 Twp-22 Rng-20

RUSTY S BURNSIDE ETAL 1-00500220 2772.08 KINCAID S36, T22, R20, BLOCK 10, LTS 1 THRU 18, TOG WVAC ALY" Subd-KINCAID Blk-10 Sec-36 Twp-22 Rng-20

C D SCHULTE AGENCY INC 1-00214420 1440.80 % JANON GORDON BEG 43.75'S NE COR LT 1 S21.5' W70',N15'E,70' TO POB TO POB Subd-GARNETT Blk- 54" Sec-30 Twp-20 Rng-20

C D SCHULTE AGENCY INC 1-00215160 1322.80 GARNETT BLOCK 69 Lot Block Info 13 & W2 LT 14 SECTION 30 TOWNSHIP 20 RANGE 20 Subd-GARNETT Blk-69 Lot-13 & W2 LT 14 Sec-30 Twp-20 Rng-20

CAB-TEL CORP 1-00301970 87.18 % ATTN: SHANNON GREELEY, S30, T19, R21, BLOCK 42, Lot N2" LT 2, SECTION 30 TOWNSHIP 19 RANGE 21" Subd-GREELEY Blk-42 Lot-N2 LT 2 Sec-30 Twp-19 Rng-21

KENNETH R CARTWRIGHT 1-04100940 Acres-80.00 87.22 % ROBERT L CARTWRIGHT 518, T20, R21, ACRES 80,W2 SW4 EX RD" Sec-18 Twp-20 Rng-21

RONALD E CASTLEBERRY SR 1-00215330 651.52 LAUREA CASTLEBERRY S62'LT 5 & S62' E2 LT 6 Subd-CHAPMANS

ADD TO GARNETT Blk-5 Sec-30 Twp-20 Rng-20

FAYNE CAYLOR 1-00218910 247.34 % CONNIE DEMPSAY MANDOWI ADD TO GARNETT, S31, T20, R20," BLOCK 16, Lot 1 - 6 INCL. SECTION 31 TOWNSHIP 20 RANGE 20" Subd-MANDOWI ADD TO GARNETT Blk-16 Lot-1 Sec-31 Twp-20 Rng-20

FAYNE CAYLOR 1-00218930 133.08 % GERALDINE DEMPSAY MANDOWI ADD TO GARNETT, S31, T20, R20," BLOCK 16, Lot 11 - 20 INCL. SECTION 31 TOWNSHIP 20 RANGE 20" Subd-MANDOWI ADD TO GARNETT Blk-16 Lot-11 Sec-31 Twp-20 Rng-20

FAYNE CAYLOR 1-00218940 Acres-.10 1.13 % GERALDINE DEMPSAY MANDOWI ADD TO GARNETT, S31, T20, R20," BLOCK 17, ACRES 0.1, Lot Block Info 19 & 20 E RR SECTION 31 TOWNSHIP 20 RANGE 20 Subd-MANDOWI ADD TO GARNETT Blk-17 Lot-19 & 20 E RR Sec-31 Twp-20 Rng-20

FAYNE CAYLOR 1-00219180 Acres-.30 42.88 % GERALDINE DEMPSAY MANDOWI ADD TO GARNETT, S31, T20, R20," BLOCK 26, ACRES 0.3, Lot Block Info 1.2" & 3 E RR SECTION 31 TOWNSHIP 20 RANGE 20 Subd-MANDOWI ADD TO GARNETT Blk-26 Lot-1.2 & 3 E RR" Sec-31 Twp-20 Rng-20

FAYNE CAYLOR 1-00219200 Acres-1.00 135.38 % GERALDINE DEMPSAY MANDOWI ADD TO GARNETT, S31, T20, R20," BLOCK 27, Lot 1 - 10 INCL ACRES 1.1" SECTION 31 TOWNSHIP 20 RANGE 20 Subd-MANDOWI ADD TO GARNETT Blk-27 Lot-1 Sec-31 Twp-20 Rng-20

GARY R & JESSICA R CAYLOR 1-04601110 Acres-76.80 325.78 S34, T21, R21, ACRES 76.8, S2 SW4 EX RD Sec-34 Twp-21 Rng-21"

GARY R & JESSICA R CAYLOR 1-11001440 Acres-148.00 1502.70 S03, T22, R21, ACRES 148, NW4 EX RD Sec-03 Twp-22 Rng-21"

SHIZUKO CENTLIVRE 1-00200940 615.71 S25, T20, R19, BEG 188"W & 977.5' S OF NE" SEC COR,W183',N200',E183',S200' TO POB Sec-25 Twp-20 Rng-19"

SHIZUKO CENTLIVRE 1-03501380 Acres-5.30 61.90 BEG 891' W SW COR E2 SE4, N323.81", W840', S323.81", E840' TO POB EX RD Sec-20 Twp-20 Rng-20"

BRUCELEE & JENNIFER C CHAMBERS 1-00701390 14.60 SUPPLEMENT TO MERRILLS ADD, S36, T21," R17, BLOCK 17, Lot Block Info 22, 23, & 24 SECTION 36 TOWNSHIP 21 RANGE 17 Subd-SUPPLEMENT TO MERRILL ADD Blk-17 Lot-22, 23, & 24" Sec-36 Twp-21 Rng-17

GARY & CONNIE CHANDLER 1-00203520 Acres-1.20 3264.30 THOMAS ADD TO GARNETT, S25, T20, R19," ACRES 1.2, Lot Block Info 2 & W100'LT 1" SECTION 25 TOWNSHIP 20 RANGE 19 Subd-THOMAS ADD TO GARNETT Lot-2 & W100'LT 1 Sec-25 Twp-20 Rng-19

GARY & CONNIE CHANDLER 1-03001510 Acres-5.50 38.04 THOMAS ADD TO GARNETT, S25, T20, R19," ACRES 5.5, BEG SW COR LT 2, E340' 5670" TO RR, SW115' W250' N707.5' TO POB" SECTION 25 TOWNSHIP 20 RANGE 19 Subd-THOMAS ADD TO GARNETT Sec-25 Twp-20 Rng-19

ESTHER CHAVEZ 1-00101600 56.64 % CHRISTINA DUNLAP COLONY, S06, T23, R19, BLOCK 53, BEG SW" COR LT 12, TH NE46' TO PT 4' S OF NW COR" LT 11, SE PARA TO N LN LT 11 123' SW PARA" TO PINE ST 21'SW TO PT 30'NW OF SE COR Subd-COLONY Blk-53 Sec-06 Twp-23 Rng-19

MICHELLE E CHUDZIK 1-00209810 578.98 GARNETT BLOCK 36 Lot Block Info 9 & W2 LT 8 SECTION 30 TOWNSHIP 20 RANGE 20 Subd-GARNETT Blk-36 Lot-9 & W2 LT 8 Sec-30 Twp-20 Rng-20

MICHELLE E CHUDZIK 1-00216160 849.18 RONALD K MCCAIN % JEREMY & ASHLEY MCCARTY Subd-CHAPMANS ADD TO GARNETT Blk- 15 Lot-12 & E34'LT 1 Sec-30 Twp-20 Rng-20

TIMOTHY J SR & TAMARA J CLARK 1-00218790 51.76 MANDOWI ADD TO GARNETT, S31, T20, R20," BLOCK 11, LTS 16-20 & S2 VAC ALY ADJ ON" N SECTION 31 TOWNSHIP 20 RANGE 20" Subd-MANDOWI ADD TO GARNETT Blk-11 Sec-31 Twp-20 Rng-20

TIMOTHY J & TABITHA M CLARK 1-03000950A Acres-9.40 299.96 BEG 30"W NE COR SW4, S560',W652' N688" TO CTR HWY, SELY 680' TO POB SEC 23 Twp-20 Rng-19

MICHAEL W COBBS 1-04600460 Acres-.90 6.82 BUSH CITY, S19, T21, R21, BLOCK 6, LTS 7" THRU 12 & ABAN RR ADJ TO LT 7 SECTION 19 TOWNSHIP 21 RANGE 21 Subd-BUSH CITY Blk-6 Sec-19 Twp-21 Rng-21

MICHAEL W COBBS 1-04600480 Acres-.80 5.46 BUSH CITY, S19, T21, R21, BLOCK 7, LTS 1" ,2,3 & ABAN RR ADJ SECTION 19 TOWNSHIP 21 RANGE 21" Subd-BUSH CITY Blk-7 Sec-19 Twp-21 Rng-21

MICHAEL W COBBS 1-04600490 Acres-.50 3.64 BUSH CITY, S19, T21, R21, BLOCK 7, Lot 6" SECTION 19 TOWNSHIP 21 RANGE 21 Subd-BUSH CITY Blk-7 Lot-6" Sec-19 Twp-21 Rng-21

MICHAEL W COBBS 1-04600500 Acres-.30 2.27 BUSH CITY, S19, T21, R21, BLOCK 7, Lot 4" & 5, SECTION 19 TOWNSHIP 21 RANGE 21" Subd-BUSH CITY Blk-7 Lot-4 & 5 Sec-19 Twp-21 Rng-21

MICHAEL W COBBS 1-04600510 Acres-.60 4.09 BUSH CITY, S19, T21, R21, BLOCK 8, Lot 1" - 4 INCL. SECTION 19 TOWNSHIP 21 RANGE 21" Subd-BUSH CITY Blk-8 Lot-1-4 INCL Sec-19 Twp-21 Rng-21

MICHAEL W COBBS 1-04600520 Acres-.90 6.37 BUSH CITY, S19, T21, R21, BLOCK 8, Lot 7" - 12 INCL. SECTION 19 TOWNSHIP 21 RANGE 21" Subd-BUSH CITY Blk-8 Lot-7-12 INCL Sec-19 Twp-21 Rng-21

MICHAEL W & DEANN E COBBS 1-04600530 3.94 BUSH CITY, S19, T21, R21, BLOCK 8, Lot 5" & 6, SECTION 19 TOWNSHIP 21 RANGE 21" Subd-BUSH CITY Blk-8 Lot-5 & 6 Sec-19 Twp-21 Rng-21</

TAXES...

FROM PAGE 6A

Lot-7 & 8 Sec-35 Twp-21 Rng-19
MARILYN GILMORE 1-00217810
282.12 % JEFF COLLINS GARNETT, S30, T20, R20, BLOCK 63, Lot" Block Info 7.8 & E2 LT 9 SECTION 30 TOWNSHIP 20 RANGE 20 "

Blk-59 Lot-17 & 18 Sec-30 Twp-20 Rng-20
LOIS D HISER 1-04000100 Acres-7.50
113.50 % LOIS D PEARCE S03, T20, R21, ACRES 7.5, BEG SE COR SE4"

Lot Block Info 13 & "W2 LT 14 SECTION 30 TOWNSHIP 20 RANGE 20 Subd-GARNETT
Blk-39 Lot-13 & W2 LT 14 Sec-30 Twp-20 Rng-20
CLARA MAE KENTCH 1-00101450
322.98 % CLARA MAE HARTMAN COLONY BLOCK 50 Lot 2 SECTION 06"

KEVIN S MATNEY 1-00219040 230.02
ANDREA M DRIMMEL MANDVOI ADD TO GARNETT, S31, T20, R20," BLOCK 19, Lot 11 - 15 INCL SECTION 31 TOWNSHIP 20 RANGE 20" Subd-MANDVOI ADD TO GARNETT Blk-19 Lot-11 Sec-31 Twp-20 Rng-20

TRUST 1-12000430 Acres-155.40 449.78 % BENNETT GRAIN FARMS S29, T22, R21, ACRES 155.4, NE4 EX RD" Sec-29 Twp-22 Rng-21
LINDA L MOODY TRUSTEE 1-12000631 Acres-152.30 404.71 % BENNETT GRAIN FARMS, INC NE4,EX COM NE COR NE4,W1322.5" & S 40 DEG W52.6"

199.42 K-BIRD INC % LUIS A LOPEZ S19, T22, R21, ACRES 95.7, BEG SW COR" SW4,N1653.7,E2537,"S1653.5,W2544.3" TO POB EX RD" Sec-19 Twp-22 Rng-21
EDDIE JERRY LEE & TINA MARIE RADFORD 1-00101280 246.28 COLONY BLOCK 47 LTS 1,2 & E12.5"LT 3" SECTION 06 TOWNSHIP 23 RANGE 19 Subd-COLONY Blk-47 Sec-06 Twp-23 Rng-19

TAXES... County publishes 2013 budget

FROM PAGE 7A

MARY SWEPSTON KINCAID, S36, T22, R20, BLOCK 26, Lot 3 & 4" Subd-KINCAID Blk-26 Lot-3 & 4 Sec-36 Twp-22 Rng-20

LEO V SMITH 1-00700670 156.94 HIGHBERGERS ADD TO WESTPHALIA, S36, T21," R17, BLOCK 5, SECTION 36 TOWNSHIP 21 RANGE 17" Subd-HIGHBERGERS ADD TO WESTPHALIA Blk-5 Sec-36 Twp-21 Rng-17

LEO V SMITH 1-00700680 2.14 HIGHBERGERS ADD TO WESTPHALIA, S36, T21," R17, BLOCK 8, SECTION 36 TOWNSHIP 21 RANGE 17" Subd-HIGHBERGERS ADD TO WESTPHALIA Blk-8 Sec-36 Twp-21 Rng-17

PHILIP W SMITH 1-10400270 Acres-80.40 1342.94 S16, T23, R20, ACRES 80.4, W2 NE4 EX RD Sec-16 Twp-23 Rng-20

THOMAS A & REGAN S SMITH 1-08002170 209.09 WELDA, S02, T22, R19, BLOCK 7, Lot 10, 11" & 12, SECTION 20 TOWNSHIP 22 RANGE 19" Subd-WELDA Blk-7 Lot-10, 11 & 12 Sec-20 Twp-22 Rng-19

DONNA L SNAVELY 1-00208030 561.68 GARNETT BLOCK 20 N90°LT 1 & E8, 94°OF" N90°LT 2 SECTION 30 TOWNSHIP 20 RANGE 20 Subd-GARNETT Blk-20 Sec-30 Twp-20 Rng-20

FRANK D SOBBA 1-02100030 Acres-18.00 1809.18 S19, T19, R20, ACRES 38.1, NW4 W OF RR" EX BEG 58°E SW COR NW4, E780', N206', W781' " S206° TO POB & EX COM SW COR NW4 N1157.6° E TO E RW LN HWY 59" Sec-19 Twp-19 Rng-20

MICHAEL R SOMMER 1-00300900 734.31 S75°LTS 1,4 INCL & E2 VAC ALY BETWEEN LOTS 4 & 5 Subd-GREELEY Sec-30 Twp-19 Rng-21

MICHAEL R SOMMER 1-00300900 12.40 S75° LTS 1 THRU 4, LTS 5 & 6 LYG S OF" RR R/W, & S 75° OF VAC ALY Subd-GREELEY" Sec-30 Twp-19 Rng-21

CLIFFORD C SPARKS SR REVOCABLE TRUST 1-02600310A Acres 2215.70 % BRET A & JENNIFER C POPE S28, T19, R18, ACRES 10 BEG 330°E NW COR" NW4, S330', E1320', N330', W1320' TO POB EX RD" Sec-28 Twp-19 Rng-18

REBECCA STANLEY 1-00210200 708.54 BRYSON ADD TO GARNETT BLOCK 4 BEG" 114°S NW COR LT 1 TH E90° S34', W90° N34" TO POB SECTION 30 TOWNSHIP 20 RANGE 20 Subd-BRYSON ADD TO GARNETT Blk-4 Sec-30 Twp-20 Rng-20

MARY C STEPHENS 1-00215900 1552.00 CHAPMANS ADD TO GARNETT BLOCK 7 LT 8" & E2 VAC ALY BET LTS 8,9 SECTION 30 TOWNSHIP 20 RANGE 20" Subd-CHAPMANS ADD TO GARNETT Blk-7 Sec-30 Twp-20 Rng-20

WYATT & JANET STEVENS 1-00700910 436.90 SUPPLEMENT TO MERRILLS ADD, S36, T21," R17, BLOCK 5, Lot 7 & 12" SECTION 36 TOWNSHIP 21 RANGE 17 Subd-SUPPLEMENT TO MERRILL ADD Blk-5 Lot-7 & 12 Sec-36 Twp-21 Rng-17

BEG 70°N NW COR ROACH" ADD, N100°, E200', S100', W200' TO POB Sec-30 Twp-20 Rng-20"

CHARLES R TURNER ET AL 1-08000350 1109.88 % ALTA TURNER RAILROAD ADD TO WELDA, S35, T21, R19," BLOCK 12, Lot 1 & 2, SECTION 35 TOWNSHIP 21 RANGE 19" Subd-RAILROAD ADD TO WELDA Blk-12 Lot-1 & 2 Sec-35 Twp-21 Rng-19

LAWRENCE R JR & JANET L TURNER 1-00204730 12.69 S19, T20, GOLF CART SHED #30 Sec-19 Twp-20 Rng-20"

UNKNOWN 1-00701560 8.72 WESTPHALIA (CORRECTED COPY), S36, T21," R17, BEG NW COR LT 4, BLK 11 E 65', S50' " W20', N40', W45', N10' TO POB SECTION 36 TOWNSHIP 21 RANGE 17" Subd-WESTPHALIA (corrected) Sec-36 Twp-21 Rng-17

UNKNOWN 1-00701570 9.25 S25, T21, R17, BEG 562°W SE COR SW4," W16', N142', E16', S142' TO POB Sec-25 Twp-21 Rng-17"

USD #365 1-03501150 Acres-25.40 88.60 S19, T20, R20, ACRES 25.4, BEG AT PT" 165°E OF NW COR OF SWA TH E1470', SELY" ALG RR R/W W890', N600', W TO E HWY R/W N TO POB" Sec-19 Twp-20 Rng-20

USD #365 1-03501150C Acres-10.80 34.74 S19 T20 R20 10.8 ACRE, BEG NW COR LT 7" MAPLEWOOD ADD, N600', FOL E HWY R/W, E" 765', S600', W800' TO POB" GINA VEERKAMP 1-00101380 71.90 DOUG GEARY S06 T23 R19 E42°LT 1, BLK 49, COLONY," & ALL LT 1, BLK 49, PINEGAR'S ADD Sec-06 Twp-23 Rng-19

JAY S & BARBARA L VELVICK 1-00209750 1874.08 GARNETT BLOCK 37 Lot 23 & 24," SECTION 30 TOWNSHIP 20 RANGE 20 Subd-GARNETT Blk-37 Lot-23 & 24 Sec-30 Twp-20 Rng-20

JAY S VELVICK ET AL 1-00210890 1298.92 CENTENNIAL ADD TO GARNETT Lot 4," SECTION 30 TOWNSHIP 20 RANGE 20 Subd-CENTENNIAL ADD TO GARNETT Lot-4 Sec-30 Twp-20 Rng-20

JAY S & BARBARA L VELVICK 1-00213170 1224.96 GARNETT BLOCK 35 Lot E2 LT 14," SECTION 30 TOWNSHIP 20 RANGE 20 Subd-GARNETT Blk-35 Lot-E2 LT 14 Sec-30 Twp-20 Rng-20

PAUL W & CAROL A VOGELER 1-00217530 92.88 GARNETT, S30, T20, R20, BLOCK 59, Lot 8" & 9, SECTION 30 TOWNSHIP 20 RANGE 20" Subd-GARNETT Blk-59 Lot-8 & 9 Sec-30 Twp-20 Rng-20

TIMOTHY L WAKEFIELD 1-00700890 852.38 W92°LTS 13-17 & ALL LTS 18-24 INCL Subd-SUPPLEMENT TO MERRILL ADD Blk-5 Sec-36 Twp-21 Rng-17

RYAN & CARLA WALTER 1-00201750 474.98 BEG 1504°W & 60°N SE COR NE4, E56', N140', W56', S140' TO POB" Sec-25 Twp-20 Rng-19

RYAN A & CARLA J WALTER 1-00217650 366.21 Subd-GARNETT Blk-61 Lot-9 & W20°LT 10 Sec-30 Twp-20 Rng-20

STEPHEN P & OPAL E WATSON 1-09400320 Acres-135.40 1220.34 S31, T22, R19, ACRES 135.4, NW4 EX HWY R/W, & RD" Sec-31 Twp-22 Rng-19

CRYSTAL M WATTS 1-00102320 246.28 PINEGARS 2ND ADD (PLAT 3) BLOCK 7," Lot 7 & 8 SECTION 06 TOWNSHIP 23 RANGE 19" Subd-PINEGAR'S 2ND ADD PLAT 3 Blk-7 Lot-7 & 8 Sec-06 Twp-23 Rng-19

RAYMOND E WATTS 1-00217440 374.86 GARNETT, S30, T20, R20, BLOCK 58, Lot 17" & 18, SECTION 30 TOWNSHIP 20 RANGE 20" Subd-GARNETT Blk-58 Lot-17 & 18 Sec-30 Twp-20 Rng-20

JOHN & VANESSA WEATHERBEE 1-00701470 355.98 SUPPLEMENT TO MERRILLS ADD, S36, T21," R17, BLOCK 18, Lot 13 - 18 INCL, SECTION 36 TOWNSHIP 21 RANGE 17 Subd-SUPPLEMENT TO MERRILL ADD Blk-18 Lot-13-18 Sec-36 Twp-21 Rng-17

FRANCIS R & ELLEN WEAVER 1-04600450 13.44 Subd-BUSH CITY Blk-6 Lot-1 TO 6 INCL Sec-19 Twp-21 Rng-21

FRANCIS R & ELLEN WEAVER 1-04600570 8.19 BUSH CITY, S19, T21, R21, BLOCK 9, Lot 1" & 2, & ABAN, RR R/W SECTION 19 TOWNSHIP 21 RANGE 21" Subd-BUSH CITY Blk-9 Lot-1 & 2 Sec-19 Twp-21 Rng-21

MELISSA C WEAVER 1-00500810 198.76 KINCAID, S36, T22, R20, BLOCK 26, Lot 9 & 10" Subd-KINCAID Blk-26 Lot-9 & 10 Sec-36 Twp-22 Rng-20

RICHARD E WEBBER 1-00101760 625.00 HEATHER L BEAMAN COLONY BLOCK 63 Lot Block Info 4,5,6" EX S96' SECTION 06 TOWNSHIP 23 RANGE 19" Subd-COLONY Blk-63 Lot-4,5,6 EX S96' Sec-06 Twp-23 Rng-19

RICHARD & HEATHER WEBBER 1-00102590 866.42 COULTERS 1ST ADD TO COLONY BLOCK 2," BEG 60°W OF NW COR BLK 2 S150' W100' N150' E100' TO POB SECTION 07 TOWNSHIP 23 RANGE 19" Subd-COULTERS 1ST ADD TO COLON Blk-2 Sec-07 Twp-23 Rng-19

ROY W & ETHEL LOLA WEBBER 1-00102570 97.64 COULTERS 1ST ADD TO COLONY BLOCK 2," Lot 1,2, & 3 SECTION 07 TOWNSHIP 23 RANGE 19" Subd-COULTERS 1ST ADD TO COLON Blk-2 Lot-1,2, & 3" Sec-07 Twp-23 Rng-19

ROY W & ETHEL LOLA WEBBER 1-00102580 1230.96 COULTERS 1ST ADD TO COLONY BLOCK 2," Lot 4,5, & 6 SECTION 07 TOWNSHIP 23 RANGE 19" Subd-COULTERS 1ST ADD TO COLON Blk-2 Lot-4,5, & 6" Sec-07 Twp-23 Rng-19

STEVE B & TRACY L WEESE 1-03502850 819.86 S29 T20 R20 BEG 100°E NW COR NE4" SW4, E133' S345', W133', N345' TO POB EX RD & R/W" Sec-29 Twp-20 Rng-20

GLENN W & ANGELA WELCH 1-00208970 747.64 GARNETT BLOCK 22 Lot Block Info 1 &" E10°LT 2 SECTION 30 TOWNSHIP 20 RANGE 20 Subd-GARNETT Blk-22 Lot-1 & E10°LT 2 Sec-30 Twp-20 Rng-20

WELLS FARGO BANK NA 1-00211070 1084.96 % OPTION ONE MORTGAGE CORPORATION Subd-GARNETT Blk- 8 Lot-1 & 2 Sec-30 Twp-20 Rng-20

LAWRENCE E WEST 1-07201230 Acres-4.00 7.32 N100° W2 SE4 & N50' E2 SE4 Sec-01 Twp-23 Rng-17

LAWRENCE E WEST 1-07201230C Acres-5.00 3.85 LOTS 20-25 BLK 1, NORTH COTT PLAT Sec-01 Twp-23 Rng-17"

LAWRENCE E WEST 1-07201230D 1.93 BEG NW COR LOT 26 BLK 1, S12', E47', N12" W47' TO POB NORTH COTT PLAT Sec-01 Twp-23 Rng-17"

DAVID & CAROLYN WHITCOMB 1-00500710 339.90 KINCAID, S36, T22, R20, BLOCK 12, Lot 5 & 6" Subd-KINCAID Blk-12 Lot-5 & 6 Sec-36 Twp-22 Rng-20

LEE ROY & SUZANNE WHITCOMB

1-12001140 Acres-237.50 453.10 S15, T23, R21, ACRES 237.5, NE4 & N2 SE4 EX RD" Sec-15 Twp-23 Rng-21

ROY W & HONEY L WHITCOMB 1-00500620 15.20 Subd-KINCAID Blk- 3 Lot-12 Sec-36 Twp-22 Rng-20

ROY W & HONEY L WHITCOMB 1-12001430 Acres-3.80 508.44 S11, T23, R20, ACRES 4, BEG SE COR W2" NE4, N429', W374' S460', N30' TO POB Sec-11 Twp-23 Rng-20

STACEY L WHITCOMB 1-00212920 286.20 GARNETT BLOCK 34 Lot 7 SECTION 30 TOWNSHIP 20 RANGE 20" Subd-GARNETT Blk-34 Lot-7 Sec-30 Twp-20 Rng-20

RICHARD L WHITE 1-03102100B Acres-80.00 388.46 S28, T20, R19, ACRES 80, W2 NE4, EX RD Sec-18 Twp-20 Rng-19

JAMES STEVEN WHITESSELL 1-00218000 241.46 MARITA C WHITESSELL GARNETT, S30, T20, R20, BLOCK 64, S84°LT 1 & S84°E 27°LT 2 SECTION 30 TOWNSHIP 20 RANGE 20 Subd-GARNETT Blk-64 Sec-30 Twp-20 Rng-20

DONALD L WICKHAM 1-00216490 884.52 CHAPMANS ADD TO GARNETT BLOCK 18 LTS" 19, 20, E26°LT 18 & VAC ALY BET LTS 18 &" 19 SECTION 30 TOWNSHIP 20 RANGE 20 Subd-CHAPMANS ADD TO GARNETT Blk-18 Sec-30 Twp-20 Rng-20

NATHAN WIEHL & NICOLE BRUMMEL 1-00201087A Acres-1.80 156.62 PRAIRIE LINKS SUBDIVISION, BLOCK 01," ACRES 1.8, LT 8, ALG W/ORIG E1/2 VAC PRAIRIE LN" Subd-PRAIRIE LINKS Blk-1 Sec-19 Twp-20 Rng-20

GERRY L WIGHT 1-00207650 1359.46 LT 4 & E2 LT 5 Subd-GARNETT Blk- 4 Lot-4 & E2 5 Sec-30 Twp-20 Rng-20

GERRY L WIGHT 1-00214750 279.22 GARNETT BLOCK 66 LT 16 & N100°LT 17" SECTION 30 TOWNSHIP 20 RANGE 20 Subd-GARNETT Blk-66 Sec-30 Twp-20 Rng-20

JAMES L & MARY L WILLIAMS 1-00501180 606.72 KINCAID, S36, T22, R20, BLOCK 13, Lot Block Info 3 & N40°LT 4" Subd-KINCAID Blk-13 Lot-3 & N40°LT 4 Sec-36 Twp-22 Rng-20

MARILEE WILLIAMS 1-00206390 1722.72 KATHERINE A WILLIAMS EASTGATE ADD TO GARNETT BLOCK 2 Lot" 5 SECTION 29 TOWNSHIP 20 RANGE 20" Subd-EASTGATE ADD TO GARNETT Blk-2 Lot-5 Sec-29 Twp-20 Rng-20

CLAUDIA D WILLIAMSON & DAVID W GREEN 1-00301120 1399.54 GREELEY, S30, T19, R21, BLOCK 40, Lot 7," SECTION 30 TOWNSHIP 19 RANGE 21 Subd-GREELEY Blk- 40 Lot-7 Sec-30 Twp-19 Rng-21

TONY B WILSON 1-00211920 780.84 GARNETT BLOCK 26 Lot Block Info 13 &" W2 LT 14 SECTION 30 TOWNSHIP 20 RANGE 20 Subd-GARNETT Blk-26 Lot-13 & W2 LT 14 Sec-30 Twp-20 Rng-20

WOLKEN GOODYEAR 1-00214760 533.51 % JOHN RUNDLE GARNETT BLOCK 67 LT 3, N80°LT 1 & 2" & E2 LT 4 SECTION 30 TOWNSHIP 20 RANGE 20 Subd-GARNETT Blk-67 Sec-30 Twp-20 Rng-20

DEBRA KWOMELSDORF 1-10501090 Acres-2.90 146.62 S32, T22, R20, ACRES 2.9, BEG SW COR SE4" N186', E693' S186', W693' TO POB EX RD Sec-12 Twp-22 Rng-20"

JUSTIN D & ALICIA M WOODS 1-00500160 341.52 KINCAID, S36, T22, R20, BLOCK 6, LTS 1" THRU 12, TOG W/VAC ALY & ADJ S1/2 VAC" SIXTH AVE SECTION 36 TOWNSHIP 22 RANGE 20 Subd-KINCAID Blk- 6 Sec-36 Twp-22 Rng-20

WOODY DEVELOPMENT & REALTY LLC 1-00212420 822.69 GARNETT BLOCK 30 Lot 6 & N90° 7," SECTION 30 TOWNSHIP 20 RANGE 20 Subd-GARNETT Blk-30 Lot-6 & N90° 7 Sec-30 Twp-20 Rng-20

WOODY DEVELOPMENT & REALTY LLC 1-00215080 125.51 GARNETT BLOCK 68 S2 LTS 1 & 2" & E18°S2 LT 3 SECTION 20 TOWNSHIP 20 RANGE 20 Subd-GARNETT Blk-68 Sec-20 Twp-20 Rng-20

WOODY DEVELOPMENT & REALTY LLC 1-00215400 213.81 GARNETT BLOCK 72 Lot Block Info 5 &" W2 LT 4 SECTION 30 TOWNSHIP 20 RANGE 20 Subd-GARNETT Blk-72 Lot-5 & W2 LT 4 Sec-30 Twp-20 Rng-20

WARD W WOOLS 1-12001580 Acres-2.10 51.96 S13, T23, R20, ACRES 2.1, BEG SW COR NE4" SE4 N198', E550 S198', W TO POB EX RD Sec-13 Twp-23 Rng-20

J C & AMANDA LOUISE WRAY 1-00216310 609.16 LTS 1,4,5,8,9,12 & N2 VAC ST" Subd-CHAPMANS ADD TO GARNETT Blk-11 Sec-30 Twp-20 Rng-20

JOHN ALLEN & EMMA F YODER 1-05000350 Acres-79.40 846.59 W2 NE4 EX RD Sec-08 Twp-21 Rng-19

JOHN A & EMMA F YODER 1-06000060 Acres-54.00 127.00 N 1/2 OF 108.3 AC OF S SIDE OF NE FR4 Sec-01 Twp-21 Rng-18

LESTER P YODER JR 1-00206270 1138.72 Subd-E S NICHOLS SUBDIVISION Blk-1 Lot-2 Sec-29 Twp-20 Rng-20

LESTER PAUL YODER JR 1-02700441 Acres-17.30 28.84 BEG SE COR OF SEC, N1329' W TO CTR OF" CK, SLY ALG CTR OF CK TO PT 60° W OF E" LI SE4, TH S & PW E LI OF SE4, TH S & PW E LI" Sec-14 Twp-20 Rng-18

LESTER P YODER JR 1-03000800 Acres-1.80 49.48 BEG N GATE POST 489'W & 982°N SE COR S2 NE4, TH NWLY 424.7' ALG W R/W CO RD" E410', SWLY ALG US HWY 59 318' TH W286" Sec-13 Twp-20 Rng-19"

LESTER YODER 1-00219170 106.36 LT 8 W OF RR & ALL LTS 9 & 10 & VAC ST Subd-MANDOWY ADD TO GARNETT Blk-26 Lot-P8 All 9 & 10 Sec-31 Twp-20 Rng-20

MELVIN RAY & BECKY YODER 1-05000610 Acres-2.00 13.11 LOTS 1-19 & VAC ST & ALYS BLK 4 Subd-MONT IDA Blk- 4 Lot-LTS 1-19 Sec-18 Twp-21 Rng-19

MELVIN RAY & BECKY YODER 1-05000720 37.66 Subd-MONT IDA Blk- 17 Lot-LTS 5-8 Sec-18 Twp-21 Rng-19

JOHN J & JESSICA M ZILLNER 1-00216580A 185.34 LOTS 1 & 2 & VAC ALY Subd-CHAPMANS ADD TO GARNETT Blk-25 Lot-Lots 1 & 2 Sec-30 Twp-20 Rng-20

IST COLONY LLC 1-07200671 Acres-3.00 356.50 % SHARON K SATERFIELD S04 T23 R18 ACRES 3.0 BEG ON W" LN SW4 1560°N SW COR SW4, N436', N87 DEG" E340', S436', S87 DEG W340' TO POB EX RD Sec-04 Twp-23 Rng-18"

138 EAST 5TH INC 1-00214470 74.84 GARNETT BLOCK 55 BEG 3.5°E NW COR LT" 2 TH S100' W0.7, S40' W18', N140' E18.7" TO POB SECTION 30 TOWNSHIP 20 RANGE 20 Subd-GARNETT Blk-55 Sec-30 Twp-20 Rng-20

Grand Total 334061.23

(Published in The Anderson County Review, August 21, 2012)

STATE OF KANSAS City/County 2013

NOTICE OF HEARING BUDGET

The governing body of Anderson County, Kansas will meet on the 31st day of August, 2012 at 10:00 AM, at the Office of the County Commissioners for the purpose of hearing and answering objections of taxpayers relating to the proposed use of all funds and the amount of 2012 ad valorem tax. Data for budget information is available at the County Clerk's Office and will be available at this hearing.

The Proposed Budget 2013 Expenditures and the Amount of 2012 Ad Valorem Tax establish the maximum limits of the 2013 budget. The "Est Tax Rate" is subject to slight change depending on final assessed valuation.

	2011		2012		PROPOSED BUDGET 2013		
	Actual Expenditures	Actual Tax Rate*	Budget or Estimate of Expenditures	Actual Tax Rate*	Expenditures	Amount of 2012 Ad Valorem Tax	Est Tax Rate*
General	3,332,562	26.510	3,301,845	25.831	3,461,482	1,929,818	25.261
SPECIAL REVENUE:							
Ambulance	594,531	7.738	600,319	7.614	530,854	474,028	6.205
Ambulance Capital Outlay	0						
Conservation District	27,934	0.363	28,000	0.355	29,000	26,508	0.347
County Equipment Reserve	36,299						
Election	41,436	0.458	61,000	0.782	33,000	24,638	0.323
Emergency Phone Equipment	29,901		54,882		50,100		
Wireless Phone Equipment	12,770		30,799		3,162		
Employee Benefits	893,577	11.449	947,570	12.139	1,004,070	871,143	11.403
Extension Council	119,313	1.551	135,498	1.749	139,162	126,892	1.658
Fair Building	2,500	0.033	2,491	0.031	2,500	2,282	0.030
Health	66,877	0.866	67,000	0.850	67,000	60,935	0.798
Historical Society	19,139	0.262	15,904	0.194	17,500	16,171	0.212
Je3 Reserve	22,450						
Mental Health	65,248	0.848	67,600	0.861	69,600	63,558	0.832
Intellectual Disabilities	40,769	0.530	40,969	0.520	41,379	37,660	0.493
Noxious Weed	116,589	1.184	121,500	1.385	121,500	107,281	1.404
Reappraisal	148,889	1.947	148,800	1.874	180,580	167,569	2.193
Road and Bridge	2,679,842	29.448	2,744,000	29.899	2,718,000	2,111,447	27.639
Rural Fire Equipment Reserve	49,842						
Service Program for the Elderly	57,504	0.747	54,542	0.686	54,435	49,540	0.648
Special Alcohol	6,826		7,793		8,133		
Special Bridge	395,507	1.310	341,737	0.000	354,000	230,804	3.021
Special Capital Improvement	46,601						
Special Highway	176,335						
Special Liability	55,000	0.677	55,000	0.702	55,000	50,002	0.655
Special Machinery	212,430						
Special Parks and Recreation	0		0		13,457		
DEBT SERVICE:							
Bond and Interest	284,045	3.682	287,238	3.714	299,788	263,365	3.447
Welda Sewer Bond and Interest	19,285		19,113		19,039		
CAPITAL PROJECT:							
Fire Station Project	125,054						
Ja3 Sales Tax Reserve	438,028						
ENTERPRISE:							
Solid Waste	100,003		161,000		161,000		
Welda Sewer District	22,122		50,870		50,870		
EXPENDABLE TRUST FUNDS:							
DARE Grant	1,874						
Diverson Fees	11,150						
Inmate Commissary	19,598						
Law Enforcement Trust	0						
Sex Offender Registration Fee	0						
LEPC Grant	9,512						
Prosecuting Attorney Check Fee	0						
Prosecuting Attorney Training	556						
Register of Deeds Technology	6,091						
Sheriff Reward	0						
Sheriff SAFE Program	0						
Totals	10,368,444	89.613	9,345,570	89.186	9,484,621	6,613,439	86.569
Less: Transfers	1,329,653		1,172,060		1,188,0		

COMMUNITY

CALENDAR

- Tuesday, August 21**
- Noon - Rotary International Club at Garnett Inn and Suites
 - 5:30 p.m. - Garnett Business & Professional Women at Town Hall Center
 - 7 p.m. - Legion Bingo at VFW
- Wednesday, August 22**
- First day of school for Pre-K at Greeley
 - 5:30 p.m. - USD 365 Booster Club
 - 6:30 p.m. - Garnett Optimist Club at Mr. D's Restaurant
 - 7 p.m. - Garnett Duplicate Bridge at the Garnett Inn
 - 7 p.m. - Garnett Saddle Club at the Garnett Riding Arena
- Thursday, August 23**
- 8:45 a.m. - TOPS #247 at the Garnett Town Hall Center
 - 9:30 a.m. - Pieces & Patches Quilt Guild at the Anderson County Annex
 - 12:30 p.m. to 1:30 p.m. - Line dancing at Garnett Senior Center
 - 5:30 p.m. - 13 Point Pitch and Carry In Supper at the Garnett Senior Center; pitch at 6 p.m.
 - 6:30 p.m. - Anderson County Historical Society at Lone Elm Community Building
- Friday, August 24**
- 4:30 p.m. - ACHS Red/White games
- Monday, August 27**
- 9 a.m. - Anderson County Commission at the Anderson County Annex
 - 4 p.m. - ACJH volleyball at home with Wellsville
 - 5:30 p.m. - ACJSHS Site Council
 - 6 p.m. - Friends of the Arts
- Tuesday, August 28**
- Noon - Rotary International Club at Garnett Inn and Suites
 - 6 p.m. - City of Garnett at City Hall
 - 7 p.m. - Legion Bingo at VFW
- Thursday, August 30**
- 9 a.m. to noon - ECKAN Commodity Distribution at ECKAN Center, 132 E. Fifth Ave.
 - 4 p.m. - ACHS cross country invitational
 - 4:30 p.m. - ACHS freshmen football at lola
 - 5 p.m. - ACHS JV volleyball at Burlington; varsity volleyball at Fredonia
- Friday, August 31**
- 7 p.m. - GES PTO Back To School Carnival at GES gym
 - 7 p.m. - ACHS football at Burlington
- Monday, September 3**
- Labor Day - Government offices closed, no school
 - 9 a.m. - Anderson County Commission at the Anderson County Annex
 - 9 a.m.-2:30 p.m., Friendship Quilters at the Kincaid-Selma United Methodist Church
 - 6:30 p.m. - Garnett Lions Club at Pizza Hut
 - 7:30 p.m. - Kincaid Masonic Lodge No. 338
- Tuesday, September 4**
- GES/Westphalia school pictures
 - Noon - Rotary International Club at Garnett Inn and Suites
 - 3 p.m. - ACHS girls golf at Fort Scott
 - 4 p.m. - ACHS JV volleyball at Burlington
 - 4:30 p.m. - ACHS JV football at Burlington
 - 6:30 p.m. - Greeley PTO/Site Council
 - 6:30 p.m. - Garnett Optimist Club at Mr. D's Pioneer Restaurant
 - 7 p.m. - Legion Bingo at VFW
- Wednesday, September 5**
- Greeley school pictures
 - 5:30 p.m. - USD 365 Booster Club
 - 7 p.m. - Garnett Duplicate Bridge at the Garnett Inn
 - 7 p.m. - Garnett Saddle Club at the Garnett Riding Arena

Old GHS archway to be displayed at football stadium

The Anderson County Historical Society met at the Colony Country Diner on July 17, 2012 with 31 members and guests present. Dorothy Lickteig, President, called the meeting to order. Kristie Kinney, Secretary, read the minutes from the meeting held June 7, 2012 at Willow Branch School. The minutes were approved as read. Terry Solander, Treasurer, provided the Treasurer's report. The budget was presented to the County Commissioners asking for a small increase. We received another tax distribution payment and most of the approved capital improvement projects have been paid for. Dorothy Lickteig provided the Presidents report.

The old metal roofing from the museum was sold to Niels Rytter. Andy Yoder, Yoder Construction, reworked the Country Store and the farm room west walls of the building and patched the plaster which was coming loose from the moisture that had gotten into the building. They also replaced the brick with the wooden plugs to hang the blackboards and they cleaned the residue on the bricks.

Dorothy Lickteig painted a sealant on the bricks and cleaned the items in the room. Paul and JoElla Phares got the heavy counter moved back to that wall. Shawn Feuerborn will provide an estimate to replace part of the sidewalk on the west and south sides of the museum in addition to the ramp which is not ADA approved. The shoe scrapers will be removed since they are now illegal to have on our property.

Some of the genealogy assistance was provided on the Hannah's from Colony area for some people in New York and Pennsylvania; the Illinois family of W.A. Tipword who was killed May 10, 1858 on the north Pottawatomie while turkey hunting, by Mr. Lambert who was also turkey hunting, and his brother or son was found in the Anderson County 1857 census; the Henry Lorne Brown family; Cayot family from Westphalia; local veterans from all the wars; Baber family from eastern Anderson County.

Recent donations to the museum include a quilt; George Helms donated some railroad nails from

1922 forward; Juanita Kellerman donated Boy Scout shirts; Dorothy Lickteig donated a Fraker Clothing pocket knife she purchased at a sale; Helen Sutton donated a red satin round pillow that Mrs. Glen Day made; a green school shirt; Paul Phares brought in the old glass light covers from Garnett High School that were found under the front steps; GHS trophies; and a large American flag that had belonged to Wayne Lockridge from his family. Fred Katzer donated an 1866 Journal of Agriculture Cookbook about five years ago, and Terrie Gifford typed the recipes over two to three years. The reprinted cookbook is available for \$27.25 and proceeds will go to the Gerth Cabin. Dorothy has completed Volume 1 of the Colony history which is selling for \$69. Once the next volume is completed, she will be current on Anderson County

newspapers. Discussions are continuing on the proposed recording of historical stories by local citizens with Preston Peine and Robert Matthews. The September meeting will be held in the museum on September 13, 2012 where Preston Peine will interview some citizens and Robert Matthews will record their stories.

Kristie Kinney reported that Don Blome, USD 365 Superintendent, made a suggestion that we might place the old Garnett High School (GHS) archway on the south end zone of the football field at the North Lake Park. The ground would be built up with the back side elevated, where the archway could be mounted with a bulldog possibly placed in the center, to where you would see the archway from the stadium, similar to some of the colleges. Bob Salizar

and Scott Rogers will be at the old high school removing each block of the archway this Saturday. The consensus was that the elevated mound in the end zone is a good way to display and preserve the archway, as well as provide some protection from vandalism. The City of Garnett employees will build up the area in the end zone and install the archway, for its preservation for the historical society.

John Bales, from Toronto, Kansas, provided information on the Kansas Endowment Arts Grant that was received in Woodson County, for research on southeast Kansas Indian removal during the Civil War. The information will eventually be posted on their website.

The August meeting will be at Lone Elm and the date will be posted in the newspapers.

A Cool Treat



Garnett Elementary School PTO member Amy Blaufuss serves ice cream to Derek Hermreck and children, from left, Zane (partially hidden), second grader Karson and kindergartener Kendra. Incoming students attended the ice cream social Wednesday, Aug. 15, at GES. The event was an opportunity for students to meet their teachers and see their new classroom.

Local health care human resources professional receives scholarship award

GARNETT - Karen Gillespie with Anderson County Hospital, Saint Luke's Health System, has been named an American Society for Healthcare Human Resources Administration (ASHHRA) Conference Scholarship award recipient. The ASHHRA Conference Scholarship program, developed and sponsored by MetLife Resources, recognizes and supports health care human resources professionals, one from each of the nine ASHHRA regions, interested in further developing their health care HR business knowledge and skills.



Gillespie

"Health care human resources professionals are important to the success of health care facilities, and continuing to build their knowledge and skills is important. Karen's dedication to this field and high standards, have made her an emerging leader in this area," said Derrick Kelson, vice president, MetLife. "MetLife is proud to support Karen's future development, as well as the development of others, through the ASHHRA Conference Scholarship fund."

Through the program, honorees receive a \$1,500 scholarship to attend the ASHHRA 48th Annual Conference & Exposition in Denver, Colorado. The purpose of the conference is to provide health care HR

professionals access to the latest educational tools and resources, as well as networking opportunities to help them become successful leaders in their field. The conference features over 52 educational sessions that provide information on current health care HR trends, issues and best practices.

"The ASHHRA Conference Scholarship fund offers recipients an incredible professional development experience," noted Stephanie Drake, ASHHRA executive director. "It gives us the opportunity to support Karen's development in the field and recognizes her excellent work. ASHHRA is pleased to honor Karen and other promising health care human resource professionals through this program."

SHAWNEE MISSION

 "Get The Best Of Us!"

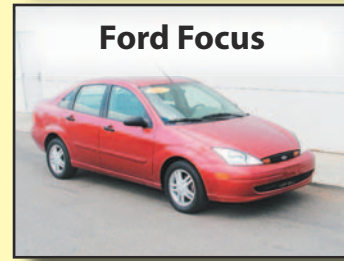
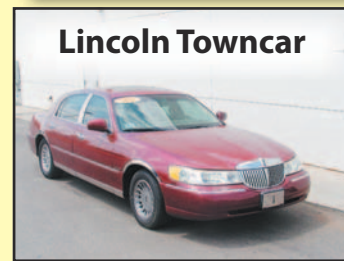
CALL NOW!
(913) 248-2260

As Seen on T.V. **GUARANTEED**
AUTO LOANS
www.guaranteeloan.com
DRIVE AWAY TODAY! **CALL NOW FOR CREDIT PRE-APPROVAL (913) 248-2260**

Divorce We finance your **Bankruptcy**
FUTURE
Repo not your past! **Bad Credit**

Down payments as low as \$0!

Shawnee Mission Ford's
GUARANTEED CREDIT APPROVAL
 Hundreds of high quality used cars.
 Drive away in your nicer, newer car **TODAY!**



We Are Your SOLUTION

Pre-approval application online at www.guaranteeloan.com or speak to a live sales agent at **(913) 248-2260.**

Shawnee Mission Ford
 11501 W. Shawnee Mission Pkwy - Shawnee, KS

IOLA
 THE ALL NEW **Sterling Six**
 CINEMA
 At Hwy. 159 & Hwy. 54
 For current movies and showtimes
2500 NEWSLINE
 (785) 448-2500
 (785) 448-2500 Press 4
www.bbtheatres.com

PLAZA
 GRILL AND CINEMA
 Ottawa
Plaza Grill and Cinema
 Located in Downtown Ottawa
 Dinner, Bar and Movies
 Call for our Dinner and Movie Specials
 at (785) 242-5555 or Facebook us
 @ The Plaza Grill and Cinema.

Spencer rifles have important place in Civil War history

Several times you have read in my column where I have found dropped or fired Spencer bullets dating from the Civil War era.

The Spencer rifle (for the infantry) and carbine (for the cavalry) were invented by C.M. Spencer around 1860. He worked as a millwright for a ribbon manufacturer. His boss let him tinker after hours in the company's shop and bought manufacturing rights to the gun after the patent was granted. This took place about the time the war between the states began, a time when the Army still used muzzle loading rifles and muskets. Spencer's rifle could be breach loaded, single shot or rapid fired, loading from a magazine tube in the stock. The .52 caliber rimfire cartridge was durable, reliable and not affected by water or the vibration of travel. The loading operation was lever action and probably inspired the 1866 Winchester.

Initially, the Army refused this fine weapon because the high rate of fire (nearly 15 rounds per minute) might encourage the waste of ammu-



by Henry Roeckers
Contact (785) 448-6244
for local archeology information.

tion. Besides, the cartridge ammo was not compatible with the loose ammo or paper cartridges in common use, generally .58 caliber. In 1861, an order for 10,000 rifles was placed. This was a wonderful break for Spencer, except for the fact that there was no factory to produce the weapons. A building, machinery and skilled workers were assembled in Boston, Mass., and rifles were eventually produced. The first shipments were late.

Field reports began coming in on the reliability of this new arm. Twenty-five men with Spencers could hold their own against 100 armed with Enfields or Springfields. Still, the Army

held back from buying more and the factory sat nearly idle and was on the verge of going out of business. In 1863, the State of Massachusetts ordered 2,000 rifles, and the Army placed an order for 11,000 carbines. This came as welcome relief, but word was received that more orders were not placed because President Lincoln had viewed some rifles defective from excessive proof firing. On Aug. 18, 1863, Chris Spencer showed up at the White House, with rifle in hand, and was allowed to visit the President. (Imagine trying that today). The next day, Spencer returned for a shooting match in the area where the Washington Monument now stands. The President, a crack shot, was impressed and no doubt influenced the rate of purchasing, which eventually became the total factory capacity (nearly 3,000 per month). By the way, two years later, President Lincoln was visited at Ford's Theatre by another man with two Spencer carbines and a pistol - John Wilkes Booth.



Firefighters attempt to contain a fire that destroyed two downtown Garnett businesses in August 2002. Country Village and Bennett's Sewing Center on the northeast side of the downtown square were destroyed by a fire. The cause of the fire could not be determined. The site is now an empty lot.

Greeley Cafe's history recorded

BY DOROTHY LICKTEIG Special to THE ANDERSON COUNTY REVIEW

What I had reported concerning the Greeley Cafe fire was that Stephen Rosner came to the Greeley area in 1868 as a stone mason and built many of the local stone business buildings and homes there. He also was the main builder of St. John's first Catholic Church in Greeley, the Emery Bird Thayer building and Keeley Institute in Kansas City. His helper was Mike Atgen.

In 1870 to 1880, Andrew Benson ran the drug store and cafe.

In 1880 Payne & Neiswender ran the Drug Store and in 1882 Payne sells to Dr. DeBall.

B.B. Benson is running it in 1883.

From 1883 to March 1, 1902, C.H. Lathen has it. (When he sells in 1902 the paper says he ran it 19 years.)

From 1902 to July 10, 1902,

H.F. Pitts comes in from Missouri, then leaves to travel as a salesman.

July 1902 to Dec. 1, 1906, R.G. Draper and W.S. Grigsby run it, and Draper keeps it until 1917.

From 1917 to Sept. 1, 1928, A.T. Holcomb runs it and calls it Gem Pharmacy.

Sept. 1928 to May 6, 1937, C.H. Strawn has the business.

May 6, 1937, to July 30, 1952, John and Leona Kratzberg Gehr run it. Leona runs it while John is in World War II, and together they own it. John was basketball coach for Greeley High School also at this time. (What I had said was that along with the drug store, ice cream, bar area and sandwiches, the Gehrs had a gift area in which they sold watches, cameras and like items - not just as a gift store.)

Next owners until the late 1950s were Curly and Joan Landwehr Robinson, followed until 1962 by Bill and Lydia

Cunningham.

Pat Adkinson takes it over for a year or two, 1962 to 1964.

In March 1964, Jean Dalsing and Anna Marie Wolken take it over as Greeley Cafe. Then in September 1964, Annie leaves and Jim and Jean Dalsing take over full ownership. (Jean worked in the building a total of 46 years before retiring.)

In December 1983, Ron and Kay Roush Carriger purchase the drug store and cafe for a year or two, then Herman and Jane Sommer Fields lease it a year or so before Bob and Shirley Katzer lease it in 1986. The Katzers purchase it in 1987, and after 17 years (2003) they sell it to Jerry Setter who runs it for five years.

In December 2008, Stephanie Sommer Kline takes over and is the current owner.

1992: City at odds over firefighter training

Aug. 27, 2002

After a three-day investigation, state and local officials say they are unable to determine the cause of the fire that destroyed two downtown Garnett businesses. The official cause of the fire at Country Village and Bennett's Sewing Center will be listed as undetermined. The fire apparently began in the retail area of Country Village and later spread to the neighboring building which housed Bennett's.

The question on which county voters will decide an additional sales tax this November to construct a new county jail will come in two parts. The actual ballot might be somewhat confusing for voters, because the question to approve the sales tax had to be approved in two parts: 1) whether to approve the increase in the county sales tax of 1 cent per dollar of sales; and 2) whether the county should issue general obligation bonds for the jail's construction.

Aug. 27, 1992

After the smoke cleared from two hours of heated discussion concerning the city's fire department Tuesday night, the Garnett City Commission finally agreed on a 2-0 vote to allow eight of its firemen to attend training in October and November. City Commissioner Mike Norman did



by Vickie Moss
Staff Writer

not vote on the issue due to conflict of interest because he is also a volunteer fireman. The commission decided to implement a policy concerning leave for required training to avoid problems in the future, but finding wording on which both sides could agree touched off a firestorm in which past gripes were rekindled, including a delay in getting a form sent in to claim earned funding for the local firemen's relief fund and perceived problems with a new city vehicle. The basic conflict arose when the commission requested that only five department members be at school at one time. Commissioners were in favor of training, but said they did not like letting so many go that the city was left in a predicament if a fire occurred while they were gone.

Aug. 19, 1982
Budget matter served as the

theme of the day at the regular meeting of the Anderson County Board of Commissioners Monday. An error was found in the budget previously published by the commissioners. That budget did not contain the local valorem tax reduction amounting to \$56,485, which will be added to the general fund, raising it to \$603,352. The mill levy for the 1983 budget year will remain at 25.53 as had been previously published.

At least one business in Greeley was burglarized Wednesday night.

Aug. 21, 1912

The rain last night visited almost every place in the county. Some places it was heavy and at other places it was lighter. Word from Bush City states that rain fell there all night. A good inch and a half fell at Garnett. Some places, it is said, there was three inches of water. The lightning and thunder were terrific - there was an unceasing cannoning lasting more than an hour; yet, little damage was done in town.

The opening session of Kansas Synod was held last night at the United Presbyterian Church. The heavy rain and thunderstorm kept many away, and the attendance was not large.

I would like to thank everyone that voted on 8/7/2012, regardless of who you voted for, and especially those who voted for me. I am asking for your continued support and the support of all others that wish to see me as the next Anderson County Sheriff. Please vote Vernon Valentine for Sheriff on 11/6/2012. Paid for by Vernon Valentine.

STORAGE UNITS AVAILABLE
\$40/mo - 1st 6 months
Garnett Inn
Suites & RV Park
Contact Sheila at 785-448-6800

Bridge club plays weekly

Lynda Feuerborn and Faye Leitch, both of Garnett, won the duplicate bridge match Aug. 15 at Garnett. David Leitch and Billie Burcham, both of Garnett, came in second. Steve Brodmerkle of Neosho Falls and Peggy Carlson of Savonburg

placed third with Marilyn Grace and Lorna Blakely, both of Ottawa.

The Garnett Duplicate Bridge Club plays each Wednesday at 7 p.m. at the Garnett Inn. All bridge players are welcome.

ANDERSON COUNTY BUSINESS DIRECTORY

Check your local area businesses first - keep your local dollars at home!

Enhance palatability of forages (straw, corn stalks, CRP hay) by using Anipro Liquid Supplements poured over bales.

Three supplements to choose from:
• Sweet • Hi Protein • Hi Energy
All provide protein, minerals and vitamins.

For more information and pricing contact:
Robert Miller
Anipro/Xtraformance Feeds
(785) 448-4301

DCI Digital Connections, Inc.
Authorized Dealer **LANIER**
"Service is our Salesman"
MIKE HERMRECK
Sales & Service

DIGITAL COPIERS
COLOR PRINTERS
NETWORK PRINTERS
NETWORK SCANNERS
FACSIMILE

112 E. 11 Coffeyville, KS 67337
Office & Fax (620) 251-1029
digicon@digicon.kscoxmail.com

On-the-Farm Service • Alignments
WOLKEN TIRE
GARNETT, KS
601 South Oak
Garnett, Kansas
(785) 448-3212
Cooper • Jetson • Kumho

MONT IDA MEATS
Howard Yoder
Owner - Operator
22468 NW Indiana Rd
Welda, KS 66091
(785) 489-2212

FedEx

The most reliable overnight shipping service, available 24-hours-a-day!

Saturday delivery available too!

Federal Express - Overnight Delivery
The World On Time®

Located at
Garnett Publishing, Inc.
112 W. Sixth Street, Garnett, Kansas

Lyle's
CARPETING SERVICE
448-3720
Carpet - Vinyl
Laminate - Hardwood
Ceramic & VC Tile

AUBURN PHARMACY
429 N. Maple • Next to Country Mart
Reliable, Dependable, Consistent
Always There - Always Caring

BECKMAN MOTORS
North Hwy. 59 in Garnett, KS
Current Rebate \$2000
See dealer for additional rebates.
(785) 448-5441
Genuine Chevrolet

DIA DORNES INSURANCE AGENCY, LLC
Donna Dornes
Sheri Lickteig
Vicki Mersman
Jim Hogan
Princeton Richmond
(785) 937-2269 (785) 835-6161

Jo Wolken, E.A., A.T.A.
AFLAC CANCER INSURANCE
IRA's*
Mutual Funds*
Investments*
(785) 448-3056
HELPING YOU PLAN TODAY FOR TOMORROW

Aaron Lizer
Agent
Farm Bureau
Financial Services
305 N. Maple • PO Box 66 • Garnett, KS 66032
PHONE (785) 448-6125 • CELL (785) 448-4428
FAX (785) 448-5878

GSSB
GARNETT STATE SAVINGS BANK
Serving The Community Since 1899
106 East Fifth • N. Hwy. 59
GARNETT, KS 66032 785-448-3111
207 East Broad Street
COLONY, KS 66015 620-852-3512
ATM Inside Short Stop 2nd & Hwy. 59, Garnett and at 207 East Broad Street, Colony

KOFO 1220AM
Country Favorites
Anderson County News
Mon-Fri • 8:00am.

SALES & SERVICE
Sukup
Grain Handling Equipment
Ritchie
Since 1921
waters' tm rights
Livestock Waterers
HOMER RIFFEY SERVICE
14686 NW 1700 Rd. • Westphalia, Kansas • 785.448.2384

Blueprint Drawings and Alterations
50 years experience
Larry Eichman
(785) 489-2508
Cell (785) 204-0695

To advertise in this directory contact Stacey or Kari at 785-448-3121.
The Anderson County Review

Church glad for new piano, organ

Happy Birthday wishes to Ryan Nickell and Larry Kehl on Aug. 13, Miki Sharp on Aug. 14; Kale Page and Jodie Hazelet on Aug. 17 and Sheryl Bushman on Aug. 20.

Happy Anniversary to Matt and Marcie Caldwell on Aug. 16.

Al and Rita Kerr returned home this past week after a trip to Seattle WA.

W.R. and Julie Workman returned home on Aug 7 after a two-week trip to Oshkosh WI.

The Helping Hands & Heart Food Pantry is opened each Wednesday from 9 a.m.-11 a.m.

The Parker's Farmer's Market and Swap Meet was Sunday, Aug 19 at Heritage Park.

Church News

Methodist Church: Lay-Leader Janice Stahl gave the Call to Worship. Pastor Marti McDougal gave the Opening Prayer and led the congregation in the Unison Prayer of Confession. Pastor also conducted the Time with the Young Disciples and talked about "Anger." Mrs. Stahl read the Scripture Lesson from John 6:35 and 41-51. The Scripture Text was read from Ephesians 4:25-5:2 and Pastor McDougal's sermon was titled "How Do We Deal with Anger?" Candle lighter was Bella Stolle. Greeters were Bob and Nancy Brownback. Usher was Bob Brownback. Pianist and Music Director was Sue Swonger.



by Judy Kinder
Contact (913) 898-6465 or True.blue.ku@gmail.com with Parker news.

Baptist Church: The morning message was titled "The Heart" and Pastor W.R. Workman read scripture from Psalms 73:1. The Evening message was taken from Jeremiah 17:9-10 and Pastor Workman's message was titled "Set Our Feelings Aside." The congregation graciously thanks those who made monetary donations which enabled the church to purchase a new piano and organ.

The church had a Back to School Bash on Saturday afternoon.

Amazing Grace and Full Gospel Church: The Children's Class studied "Elijah and Ellijay" and their Memory Verse was from Second Kings 2:11. The Intermediate Class lesson was titled "He Rose Him from the Grave" and their Memory Verse was from John 11:25. The Adult Class studied scripture from Isaiah 40:1-31 and the lesson was titled "God Renews and Strengthens." The congregation celebrated Holy Communion Sunday. Pastor Freda Miller's sermon was titled "The Cross"

and scripture was read from Isaiah 53:3-6 and Romans 5:1-12

Bible Study is held each Thursday afternoon, beginning at 4:30 p.m.

Centerville News

Happy Birthday wishes to Bruce Boydston and Cooper Lanham on Aug 14, Sara James on Aug 15 and Eldon Lanham on Aug 16.

Happy Anniversary to Larry and Jolene Pennington on Aug 14

Exercise Mondays are held each week at the Centerville Community Church's Fellowship Hall, beginning at 8am

Friends & Pieces Quilters meet every Wednesday in the Centerville Community Church's, beginning at 9am

Church News

Centerville Community Church: Hymns included "Thy Loving Kindness", "Freely, Freely", "Font of Every Blessing" and "Take Thy Name of Jesus with You." Pastor Nancy Snyder-Killingsworth's sermon was titled "When the Lord is Angry" and scripture was read from Joshua 7:1-26. Musician for this service was Maggie McKain.

The Christian Home Circle met Wednesday, Aug 15.

God will deliver us

Weekly Devotional by David Bilderback

In Psalm 34:4 David states, "I sought the LORD and he answered me; he delivered me from all my fears." In every trouble David went straight to God in prayer and after every deliverance he went instantly to God in thanks and praise. I believe this is a very good approach for each of us to take. Our heavenly Father waits patiently for us to come to him with our problems. As earthly fathers and mothers we hate to see our children struggle with problems and often in order to protect them we must intervene in the situation. God does not do this. We have a choice, we can go to him with our problems or we can try to handle them ourselves. If we try to handle them ourselves and fail then our troubles often become fears. Some of the more common fears are for our health, our job and our families.

God does not promise us the outcome we desire every time we go to him with a problem. What he will do is give us the strength to endure. If we develop a relationship with God through his Son Jesus Christ he has a way of mak-

ing big problems look smaller. As this relationship grows we begin to gain more confidence as we see God handle situations for us.

One of the toughest things to do sometimes is to stay where God puts us and do what he wants us to do. What we have to realize is if we stay the course we will receive the best God has for us rather than the best we can get for ourselves. I believe the reason we have so much trouble putting our trust in God is we live in such an age of mistrust. We live in an age where people don't trust the government, business or each other. There is sentiment that if you can't trust what you see how can you trust what you can't see, namely God.

The answer is given in John 1:1, "In the beginning was the Word, and the Word was with

God, and the Word was God" If by faith you accept this then you begin to realize the only one to trust is God. God has always been there for man but we have done as Isaiah states in Isaiah 56:6; "We all like sheep have gone astray, each of us has turned to his own way." We have disconnected from God yet he has not abandon us.

We buy all kinds of insurance car, home, health, accident and even life insurance. We try to protect ourselves and our loved ones in every way. God wants us to accept his eternal insurance which will allow us to dwell in the house of the Lord forever.

Someone once said, "Thank God for the starlight and he will give you the moonlight; thank him for the moonlight and he will give you the sunlight; thank him for the sunlight and by and by he will take you where he himself is the Light."

David Bilderback: A Ministry on the Holiness of God.

Let's talk buffers

How have you all been doing? It has been a terribly hot, dry summer. The row crops and hay crop production has been less than 'a drop in the bucket', due to lack of rain. With the lack of rain and the increase of temperatures, these factors have weighed heavily on everyone's temperament-humans and animals alike. It seems that the clouds just dance across the sky, teasing us into thinking & hoping that a rain will be dropping soon. Sometimes the clouds just 'spit and spatter' a little and then float away. Hopefully, we start seeing the weather change and the clouds start letting some rain drop.

With fall just around the corner, it is time to check your fields for any problems or concerns. You may want to make some improvements or add some buffer practices to those fields. Many questions are asked of what the various buffer practices are and 'How can they benefit me?' So, in this article, I want to explain further about the different kinds of buffers and what they can do for your land and you.

"What are the different kinds of buffers and where can we put them?" The different kinds of buffers are Grassed Waterways, Shallow Water Areas for Wildlife, Filter Strips, Riparian Forest Buffers, Contour Buffer Strips, Vegetative Barriers, Field Windbreaks/Shelterbelts, Living Snow Fences, Vegetation to Reduce Salinity, Salt Tolerant Vegetative Cover, Cross Wind Trap Strips and SAFE. Today, I will explain about the most popular practices that are being used in the southeast area of the state. Remember, all of these practices can only be applied to fields that have cropping histories between the years of 2002 and 2007 to be a part of the Continuous CRP or Buffer Program.

First, we will start with Grassed Waterways. Grassed waterways are placed in fields

Considering Conservation

by Mary Lou Ponder
Linn, Anderson & Coffey
County Buffer Coordinator

to assist terraces in being able to drain water more efficiently. A grassed waterway traps soil and sediment that would regularly just wash away.

Shallow Water Areas for Wildlife are usually established in those 'soggy', 'marshy' or low areas of a field, those unhandy places that are farmed or where soil is a heavy clay. A maximum of 10 acres per tract may be used for this buffer. These are excellent for water to slowly seep back into the water table and they also filter out chemicals from the fields.

Grassed Filter Strips are used along perennial or intermittent streams. These are used to assist in controlling streambank erosion. Usually along streambanks, there are trees. Trees are great in stabilizing streambanks, but trying to 'row-crop' close to trees is a no win situation. Trees take the water from the crops. If a grass filter strip is added beside the trees, it not only assists in controlling erosion, but also has a significant impact on water quality as they filter out nutrients, pesticides and herbicides. The maximum width from streambank to outer edge of filter strip is 120 feet.

Riparian Buffers may be a combination of trees and grass or just trees that are seeded or planted adjacent to perennial or intermittent streams. These are used to assist in controlling streambank erosion. The roots of trees grow deep into the soil to 'hold on' to it, so the soil doesn't wash in to the streams. When Riparian Buffers are

used, it is also recommended to plant several rows of trees. Then, finish off the project with planting a filter strip of grass. These areas serve numerous functions including the creek bank stabilization, water quality benefits, and improve wildlife habitat. The maximum width from streambank to outer edge of filter strip is 180 feet.

Contour Buffer Strips are strips of perennial vegetation, such as a native blend grass, alternated with wider cultivated strips that are farmed on the contour. The grass strips are spaced similar to terraces with field borders and any existing gullies seeded to grass. The purpose of the strips is to reduce erosion and filter runoff water.

SAFE is another Continuous CRP project that allows a landowner to plant native grass in small cropping acreages. The maximum acreage enrollment is 5 acres for a field less than 25 acres in size, or 20% of a field for fields 25 acres or greater, with a maximum acreage of 80 acres per field. Fields less than 5 acres may be enrolled in their entirety.

Remember all of the Continuous CRP Practices or Buffers may only be applied to fields that have an established cropping history during 4 of the 6 years between 2002 through 2007.

Please come in and visit with us at the NRCS/Anderson County Conservation District located at 111 North Maple St, in the USDA Building in Garnett. Our phone number is 785-448-6323 ext. 3. We will be glad to visit with you on your concerns and eligibility.

Sewing club meets

Zig Zag Sewing Club held its monthly luncheon meeting Aug. 1 at Parker One-Stop. Doris Rommelfanger served as hostess and led the meeting. Nine members attended.

Congratulations to Millie Burk on being 90 years young Aug. 2.

Sympathy, get-well and thank-you cards for several of our members were circulated for signature.

Decision was made to send a memorial contribution to Kansas City Hospice House in remembrance of our deceased member Barbara Green.

Jackie Leach and Millie Burk won door prizes.

Evelyn Gillogly will hostess the September 5 meeting, which will be at Garnett Pizza Hut.

KANSAS STATEWIDE ADVERTISING

Send your ad to more than 100 Kansas newspapers for as little as \$300. Ask us about other states too.
The Anderson County Review
785-448-3121

sell your stuff on eBay

Let the Review do all the work for you!
Vehicles • Clothing • Equipment
Real Estate • Collectibles
Antiques • Jewelry • You name it!
Call:
(785) 448-3121

Diebolt's Best Rental Center
INSIDE
1-888-444-4346
DIEBOLT LUMBER & SUPPLY
Don't Rent Old Worn Out Equipment Again.
We Have ALL NEW EQUIPMENT:
LAHARPE, KANSAS
5 mi. east of Iola to LaHarpe and Highway 54 jct., 1 mi. south and 1/4 mi. east.
OPEN:
Mon.-Sat. 7 a.m.-6 p.m. Sun. 10 a.m.-5 p.m.
www.dieboltlumber.com

Ottawa Municipal Auditorium and Dickinson Productions present
Pam Tillis
September 7, 2012 • 7:30
Ottawa Municipal Auditorium
301 S Hickory
Ottawa, KS
\$25 Reserved seats
Tickets available at OMA Box Office
(785) 242 - 8810 noon - 6 pm
Monday - Friday
or at www.ticketfly.com • www.pamtillis.com
Sponsored in part by BCI.

Kaloon's
\$9.99*
PRIME RIB or SIRLOIN
Friday & Saturday Night
includes choice of side, salad and roll
*Price good for dine-in only, offer not valid on catering.
785-448-2616
On the Square - At the corner of 4th and Oak
Downtown Garnett

INTERNET+
ONLY
\$19.95
Unlimited Access
(888) 332-1616

- FREE Dial-Up Accelerator
- FREE UNLIMITED Phone Technical Support
- FREE Local Access
- NO CONTRACT
- NO Taxes Added
- NO Deposit / Credit Card
- Set-Up in Minutes!

• FREE SUPPORT HOURS:
Mon-Fri 8:00am-7:00pm
Sat 10:00am-7:00pm
Sunday CLOSED

• Travel? Local Numbers:
• 8,000+ U.S. Cities
U.S. and Canada

Valnet
WALK IN SIGN-UP:
Garnett Publishing Inc.
112 W. Sixth Street
Garnett, KS 66032

VALNET
200 ARCO Place
Box 130
Independence, KS 67301
www.valnet.net

REAL ESTATE
Brokers and Related Services
Also, be sure to check the Review's Regional Classifieds for listings.

Benjamin Realty
Sherry Benjamin, Broker
Land • Homes • Commercial

201 N. Maple
Garnett, Ks 66032
benjaminrealty@earthlink.net

Office: (785) 448-2550
Home: (785) 241-0532
Cell: (785) 304-2029

AFFORDABLE HOME LOANS
Serving The Community Since 1899
GSSB
GARNETT STATE SAVINGS BANK

785-448-3111 620-852-3512 785-448-2300 785-242-6777 785-566-3311
106 E. 3rd 207 E. Grand St. 114 N. Maple 1250 E. Logan 118 E. Franklin
GARNETT, KS 66032 COLONY, KS 66015 GARNETT, KS 66032 OTTAWA, KS 66067 POMONA, KS 66076

24-HOUR ATM at all branch locations and inside the Short Stop at 2nd & Hwy. 59 in Garnett, 1621 S. Main in Ottawa and Casey's in Pomona **FDIC**

To be added to this once-a-month real estate guide
Call Stacey at (785) 448-3121.

The Anderson County Review

Study finds factors that can shape divorced mothers' co-parenting experiences

SALINA -- The type of relationship a woman has with her ex-partner is a factor in how the couple shares custody of children, according to a Kansas State University expert on postdivorce and co-parenting relationships.

In a study of divorced or separated mothers sharing physical custody of their children with their former partners, Mindy Markham, assistant professor of family studies and human services on the university's Salina campus, identified three patterns of co-parenting -- continuously contentious, always amicable and bad to better -- as well as negative and positive factors that influenced the mothers' co-parenting relationships.

Markham's study involved 20 predominately white, well-educated women between the ages of 26 to 49 who were divorced or separated from the father of their children. The mothers, from two Midwestern states, shared with their former partners legal and physical custody of the children, who ranged in age from 21 months to 12 years. At the time of the study, the couples had been separated or divorced from six months to 12 years.

"The findings of this study suggest that shared physical custody relationships are dynamic and can vary greatly," Markham said.

Today it is common for both ex-spouses to share legal and physical custody of children after divorcing. But Markham said few studies have looked at the process of co-parenting, so little is known about how divorced parents negotiate the co-parenting process.

In Markham's study, nine

mothers had continuously contentious co-parenting relationships with their ex-partners from the time of separation to the present. The negative factors that contributed to this rocky relationship included the mother's perception of her ex's parenting abilities; financial concerns, including the ex not having a job or not paying child support; control or abuse by the ex-partner; and the inability of the ex to separate marital -- or personal -- issues from the co-parenting relationship.

"All mothers in this type of co-parenting relationship reported differences in parenting styles and were concerned with how the ex was raising the children," Markham said. "Parenting practices that concerned the mothers varied greatly and included putting children in harmful situations, not bathing the children, not disciplining them and having no rules or routines. It was especially difficult for these mothers to share custody with ex-partners who were uninformed during the marriage. They didn't believe their exes were responsible parents."

Markham said eight of the women in the continuously contentious relationships didn't want to share custody of the children with their ex-partner, but most were told by lawyers or the court that they would have to do so.

Four mothers in the study had amicable co-parenting relationships, where they reported always getting along with their ex-partners from separation to the present. The positive factors that affected these relationships were that the mothers believed their ex-partners were responsible par-

ents, money wasn't a source of conflict and the mothers chose to share physical custody.

Seven of the mothers in the study had bad-to-better co-parenting relationships, where co-parenting was contentious at the time of separation, but greatly improved over time. At the time of the study, these women's relationships were similar to those of women with always amicable relationships. These mothers wanted to share physical custody, thought the father was a responsible parent and most said money was not a source of conflict.

But all mothers in bad-to-better relationships said they were unable to co-parent amicably with their ex-partner in the beginning because personal issues were not kept separate from parenting responsibility.

"Although ex-partners with bad-to-better relationships originally allowed their feelings about one another to negatively affect their co-parenting, at some point they realized this was not beneficial and made a conscious effort to change the relationship for the sake of their children," Markham said.

Communication with the ex-partner also played a role in the co-parenting relationship. In the always amicable and bad-to-better relationships, mothers were able to communicate well with ex-partners. These mothers said this made discussing differences in parenting styles easier.

But for women in continuously contentious relationships, lack of communication was a big issue, Markham said. These mothers limited direct in-person or phone

communication with their ex, preferring alternative methods like texting or email. They also avoided seeing their ex in person when it came time to exchange children by having them picked up at day care or school.

Markham said she was surprised by the level of animosity that accompanies shared custody, at least from some mothers' perceptions.

"Nearly half of the mothers in this study continue to have conflicted relationships with their ex-partners, and conversations with these women negate the notion that shared physical custody ensures cooperative, less conflicted relationships," she said. "This study can be important for helping professionals recognize that shared physical custody is not a panacea for post-divorce problems -- and that in some cases it exacerbates them."

Markham initiated the study as part of her dissertation work at the University of Missouri. A paper she co-wrote based on a secondary analysis of her dissertation and another grounded theory conducted at Missouri was published recently in the journal Family Relations. A second paper, co-written with her major professor, Marilyn Coleman, Curators professor and director of graduate studies for human development and family studies at Missouri, is pending publication.

Markham is currently working on a Family Process Institute-supported study about how men and women who share physical custody of their children communicate.

Notice of adoption filed

(First published in The Anderson County Review, Tuesday, August 7, 2012)

IN THE DISTRICT COURT OF ANDERSON COUNTY, KANSAS

PROBATE DIVISION

In the Matter of the Adoption of: **BABY BOY COLTRANE**
Birthdate: July 25, 2012
Case No. 12AD2
K.S.A. Chapter 59

To: Andrae Nehemiah Jones, Brandon Collins, and any unknown biological father

NOTICE OF HEARING ON PETITION FOR ADOPTION

The state of Kansas to all persons concerned:

You are hereby notified that a Petition for Adoption has been filed in this court in the above-captioned matter alleging that you are a putative father of the above-named child and praying for the termination of your parental rights, and you are hereby required to file your written defenses thereto on or before the 31st day of August, 2012, at 9:00 o'clock a.m. in said court, at the Anderson County Courthouse, 100 E. 4th Street, Garnett, Kansas, at which time and place said cause will be heard. Should you fail to appear therein, judgment and decree will be entered in due course upon the petition.

Kevin W. Kenney #17448
7301 Mission Rd., Ste. 243
Prairie Village, Kansas 66208
Tel.: (913) 671-8008
Fax : (913) 671-7740
kwklawfirm@aol.com
ATTORNEY FOR PETITIONERS
ag713

Notice of filing application

(Published in The Anderson County Review, August 21, 2012)

BEFORE THE STATE CORPORATION COMMISSION OF THE STATE OF KANSAS

NOTICE OF FILING APPLICATION

RE: Tom Miller dba Miller Oil and Cattle -- Application for a permit to authorize the enhanced recovery of saltwater into the F&R Miller 1-1, F&R Miller 2-1 and F&R Miller 3-1 ; Section 13, Township 21 South, Range 19 East located in Anderson County, Kansas.

TO: All Oil & Gas Producers, Unleased Mineral Interest Owners, Landowners, and all persons whomsoever concerned.

You, and each of you, are hereby notified that Tom Miller dba Miller Oil and Cattle has filed an application to commence the injection of saltwater into the Squirrel formation at the F&R Miller 1-1, located 4198 FSL, 986 FEL ; F & R Miller 2-1 , located 3956 FSL, 937 FEL, and

F& R Miller 3-1, located 3742 FSL, 1101 FEL; Section 13 Township 21 South, Range 19 East; Anderson County, Kansas, with a maximum operating pressure of 400 psi and a maximum injection rate of 100 bbls per day.

Any persons who object to or protest this application shall be required to file their objections or protest with the Conservation Division of the State Corporation Commission of the State of Kansas within thirty (30) days from the date of this publication. These protests shall be filed pursuant to Commission regulations and must state specific reasons why granting the application may cause waste, violate correlative rights or pollute the natural resources of the State of Kansas.

All persons interested or concerned shall take notice of the foregoing and shall govern themselves accordingly.

Tom Miller dba Miller Oil and Cattle
2526 North Funston Street
Iola, KS 66749
620-496-6652

ag2111

Save money on your legal costs by directing your attorney to place those notices only in The Anderson County Review. Attorneys & Clients feel free to contact us at **(785) 448-3121**

CONTRACTORS *Guide*

Get the job done right!
Check this handy directory of contracting companies before you take on that home or business project.

GUTTERING

LACO GUTTERING
Seamless Guttering • Over 30 Colors
Underground Drainage Systems
Aluminum • Steel • Copper
5" 6"
1-800-432-8891
cell (620) 496-8273

BUILDING MATERIALS

1-888-444-4346
DIEBOLT LUMBER & SUPPLY WATCH FOR SIGNS.
OPEN Mon-Sat 7am-6pm
Sunday 10am-5pm
5 miles east of Iola to LaHarpe & Hwy. 54 Jct., 1 mile south & 1/4 east.
www.dieboltlumber.com

ELECTRICAL CONTRACTORS

Edgecomb Electric
Full Service Electrical
Installation and/or Repair
OFFICE (785) 448-3355 CELL (785) 204-1580
Lonnie Edgecomb

AIR CONDITIONING/HEATING

Since 1983 **ADAMSON BROS.**
Heating & Cooling
We service all makes and models.
Sales & Service **Arcoaire**
102 S. Walnut • OTTAWA
785-242-9273

PLUMBING CONTRACTORS

WOLKEN
PLUMBING & ELECTRIC
Sales • Service • Installation
815 W. 11th Ave. • Garnett, KS 66032 • (785) 448-6771

GLASS

SINCE 1945
SUFFRON GLASS
425 Walnut • Ottawa, KS (785) 242-2515
Glass & Aluminum Products
Automotive • Residential • Commercial

Construction Supply
Contractors / Residential & Farm
GARNETT 410 N. Maple
True Value 785-448-7106
M-F 7:30-5:30 Sat 7:30-6
START RIGHT. START HERE.®

Performance Electric Gregg Colbern Dave Rossman
7-Block Certified Licensed Electricians
Bonded • Insured Free Estimates
Quality Service for over 30 Years.
206 North Oak
Ottawa, KS
(785) 242-5748

HOMETOWN HEATING & COOLING, LLC
HOME COMFORT SPECIALIST
TRANE Heating & Air Conditioning
It's Hard to Stop a Trane!
519 W. First Ave. • Garnett (785) 448-3235

SEPTIC TANKS / SYSTEMS

D&S Sanitation LLC
Septic Tank Pumping & Holding Tanks • Inspections
Brian Falk (785) 241-4803
Reliable Service • Available 7 Days A Week • Residential & Commercial
Licensed in Anderson, Franklin, Coffey, Miami, Osage, Linn & Douglas Counties

BUILDING CONTRACTORS

DIVERSIFIED CONTRACTING LLC
"We build on quality."
Commercial • Residential • Agriculture
Track Hoe • Backhoe • Dump Truck • Trenching • Rock Removal
Track Loader • Black Dirt • Electrical (Block Master)
913-898-4722 Mike Page - Parker, Kansas

Your Building Supply Headquarters!
Paint & Supplies Deck Material Paneling
Vinyl Replacement Windows Holdings
Andersen Windows HARDWARE LUMBER
Roofing Materials & Shingles
Greeley Hardware & Lumber
Downtown Greeley • (785) 867-3540

TOM ADAMS CONSTRUCTION
RESIDENTIAL • COMMERCIAL • MUNICIPAL
Excavating • Site Grading • Sewer • Water Lines • Septic Systems
Lagoons • Lakes • Ponds • Soil Conservation • Rock & Dirt Haul
Tom Adams, Owner -- (785) 448-3997

LIME & LIMESTONE

CRUSHED LIMESTONE PRODUCTS
Whitaker Aggregates
(Garnett Quarry, 4 mi. north of Garnett)
(785) 448-2600 • cell (620) 664-7449
7:30am-5pm Monday thru Friday

SIDING & WINDOWS

ANDY'S SIDING COMPANY
(785) 242-6939
2340 S. Princeton
Ottawa, Kansas
Lifetime Warranty
FREE Estimates
Serving the area for over 50 years.

ALL THE MATERIALS YOU NEED FOR YOUR HOME PROJECT!
7am-5pm Mon-Fri / Sat 7am-Noon

FLOORING

Johnathan Edgecomb • (785) 448-3899
SAVE 40% off regular retail pricing on name brand flooring.
EDGEComb FLOORING
SALES & INSTALLATION
FREE in-home consultation with our MOBILE SHOWROOM!
CARPET • TILE • VINYL
HARDWOODS • LAMINATE

MANUFACTURING HOUSING

CUSTOM KAN-BUILD MODULARS ALSO MANUFACTURED & MODULARS BY HART & SKYLINE.
Hours: 9-5 Mon.-Fri.; 9-4 Sat.
LEADBETTER HOMES
2220 E. Logan • Ottawa, KS
Just west of K-68 & I-35 Jct. • (785) 242-7490

TRUSS SUPPLIERS

Parker Truss & Stuff
Your #1 Wood Truss Manufacturer
Rod & Pam Clinton
(913) 898-2775

Keim & Sons Construction
Specializing in the framing and trimming of custom homes.
Call Lavern Keim (785) 448-3562
INSURED CREW

THE NEW KLEIN LUMBER
201 W. MADISON • IOLA • (620) 365-2201

Mitchell's Floor Covering
Come see our wide selection of carpet, vinyl, laminate and tile. We also offer countertops and showers.
115 W. 3rd • OTTAWA • (785) 242-4193
M, W, F 9am-5pm / T & Th 9am-4pm / Sat 9am-1pm

MASON CONTRACTORS

SUPERIOR MASONRY & RESTORATION, INC.
Stone • Brick • Block • Tuck Pointing
Water Proofing • Pointing • Cleaning
Robert Salazar (785) 448-5935

Edgecomb Builders
GENERAL CONTRACTOR
Custom Homes • Additions
Finishing Trimwork
OFFICE (785) 448-2368 CELL (785) 204-1580
Lonnie Edgecomb

PROTEC INDUSTRIES
CONKLIN
ROOFING SYSTEMS
COMMERCIAL • INDUSTRIAL • AGRICULTURAL
SPECIALTY COATINGS, PRODUCTS AND SERVICES

GAS - PROPANE

Lybarger OIL, INC. CONSTRUCTION SITES COMMERCIAL RESIDENTIAL
N. HWY. 59 • GARNETT
(785) 448-5512 or Toll Free 1-877-592-2743
www.lybargeroil.com
FUEL • PROPANE • LUBES

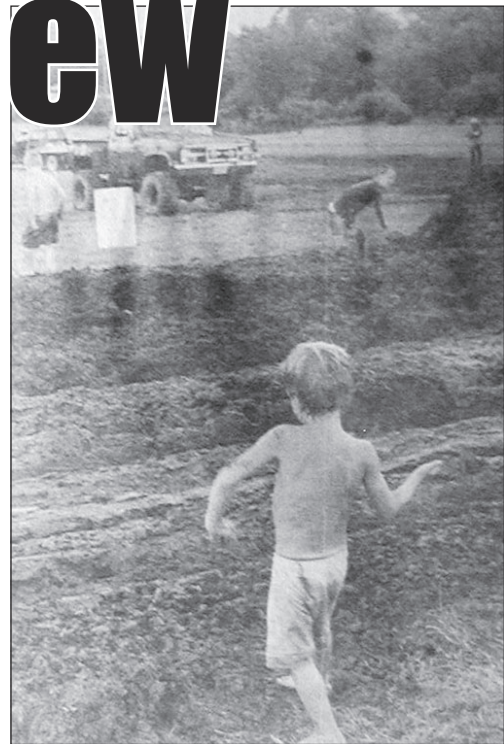
Visit The Anderson County Review online at www.garnett-ks.com.

If you would like to advertise your business in this directory call Stacey or Kari at 785-448-3121, or email review@garnett-ks.com.

1997: The Year in Review



This view from the Anderson County Courthouse shows the new annex building to the west. The building was built in 1997.



Chase Whitcomb throws mud clods into the big mud pit after the close of the Garnett Jaycees Mud Run. The event drew 99 drivers and crews and more than 600 spectators to the competition at the Golden Prairie Industrial Park in Garnett.



Construction crews clear the way for the new annex building on the west side of the downtown square. It was the first time in more than 20 years that the land was used after fire destroyed buildings on the site.



Columnist Robert Novak and Sen. Sam Brownback, now Gov. Sam Brownback, mingle with the crowd at Citizens Bank's Customer Appreciation Day in Kincaid.



Above: Bob McDaniel, right, and Todd Barnes work on the Prairie Spirit Rail Trail walkway at the Garnett Depot.



Elephant rides were part of the fun at the Kelly-Miller Bros. circus at Lake Garnett Park.



At right: Katie Arnett was decked out as Tiny Tim for the Garnett Area Chamber of Commerce Christmas parade. The theme was "A Christmas Carol."



Garnett Police Chief Dan Dietz looks over some items believed to have been stolen in a rash of thefts.



The United Presbyterian Church in Garnett gets new siding. The church was built in the late 1880s.



At right, the Garnett Area Chamber of Commerce gave service awards to, from left: Dale Lybarger, Doug Walker, Bill Craig, Jason Sjolund and Carol Askins-Beller.



The wheat harvest in 1997 had near ideal growing conditions.

Colony files ordinance for water drought emergency

(Published in The Anderson County Review Tuesday, August 21, 2012)

WATER DROUGHT/EMERGENCY ORDINANCE

Ordinance No. 421

An ordinance authorizing the declaration of one of three progressive stages of a water supply conservation and / or water supply shortage which shall conserve or curtail the use of water within the City of Colony ("the City"); establishing three stages of water conservation measures for the City; a water watch, warning or emergency; establishing procedures and voluntary and mandatory conservation measures; authorizing the issuance of administrative regulations; and prescribing certain penalties.

Be it Ordained by the Governing Body of the City of Colony.

Section 1. Purpose. The purpose of this ordinance is to provide for a progressive water supply conservation program, including the declaration of a water supply watch, warning or emergency and the implementation of voluntary and mandatory water conservation measures throughout the city in the event such a watch, warning or emergency is declared by the governing body of the City.

Section 2. Definitions.

(a) "Water", as used in this ordinance, shall mean water available to the City of Colony for treatment by virtue of the City's water rights, water supply, water supply contracts or any treated water introduced by the City into its water distribution system, including water offered for sale at any coin-operated site.

(b) "Customer", as used in this ordinance, shall mean the customer of record using water for any purpose from the City's water distribution system and for which either a regular charge is made or, in the case of coin sales, a cash charge is made at the site of delivery.

(c) "Waste of water", as used in this ordinance, includes, but is not limited to:

(1) permitting water to escape down a street, roadway or other surface intended for vehicle driving purposes, and / or any gutter, ditch, or other surface drain; or

(2) failure to repair a controllable leak of water due to defective plumbing.

(d) The following classes of uses of water are established for the purposes of this ordinance:

Class 1:
Water used for outdoor watering; either public or private, for gardens, lawns, trees, shrubs, plants, parks, golf courses, playing fields, swimming pools or other recreational areas; or the washing of motor vehicles, boats, trailers, or the exterior of any building or structure.

Class 2:
Water used for any commercial, agricultural or industrial purposes, except water actually necessary to maintain the health and personal hygiene of bona fide employees of such businesses or interests while such employees are engaged in the performance of their duties at their place of employment.

Class 3:
Domestic usage, other than that which would be included in either classes 1 or 2.

Class 4:
Section 3. In the event that the governing

body of the City or the City's designated official determines that the City's water supply may be in subject to a shortage in supply or the governing body of the City determines there is need for conservation of City's water resources for any reason, the City may begin the progressive three (3) stage water conservation program by declaring a water watch as described in section 3(a) or, in times of need and / or duress, the governing body of the City may choose to declare any section of the program described in section 3 in effect at any time:

(a) Stage 1: Declaration of Water Watch. Whenever the governing body of the City finds that conditions indicate that the probability of a drought or some other condition causing a major water supply shortage is rising, it shall be empowered to declare, by resolution, that a water watch exists and that it shall take steps to inform the public and ask for voluntary reductions in water use. Such a watch shall be deemed to continue until it is declared by resolution of the governing body to have ended. The resolutions declaring the existence and end of a water watch shall be effective upon their publication in the official city newspaper.

(b) Stage 2: Declaration of Water Warning. Whenever the governing body of the City finds that drought conditions or some other condition causing a major water supply shortage are present and supplies are starting to decline, it shall be empowered to declare by resolution that a water warning exists and that it will recommend restrictions on nonessential uses during the period of warning. Such a warning shall be deemed to continue until it is declared by resolution of the governing body to have ended. The resolutions declaring the beginning and ending of the water warning shall be effective upon their publication in the official city newspaper. Pursuant to the approval of the Chief Engineer, Division of Water Resources, Kansas Department of Agriculture, the recommended restrictions on nonessential uses may be extended to private wells within the City limits.

(c) Stage 3: Declaration of Water Emergency. Whenever the governing body of the City finds that an emergency exists by reason of a shortage of water supply needed for essential uses, it shall be empowered to declare by resolution that a water supply emergency exists and that it will impose mandatory restrictions on water use during the period of the emergency. Such an emergency shall be deemed to continue until it is declared by resolution of the governing body to have ended. The resolutions declaring the existence and end of a water supply emergency shall be effective upon their publication in the official city newspaper. Pursuant to the approval of the Chief Engineer, Division of Water Resources, Kansas Department of Agriculture, the mandatory restrictions on water use may be extended to private wells within the City limits.

Section 4. Voluntary Conservation Measures. Upon the declaration of a water watch or water warning as provided in Sections 3(a) or 3(b), the mayor is authorized to call on all water consumers to employ voluntary water conservation measures to limit or eliminate nonessential water uses including, but not limited to, limitations on the following uses:

(a) Class 1 uses of water.
(b) Waste of water.

Section 5. Mandatory Conservation

Measures. Upon the declaration of a water supply emergency as provided in Section 3(c), the mayor or authorized city official is also authorized to implement certain mandatory water conservation measures, including, but not limited to, the following conservation measures:

a) Suspension of new connections to the City's water distribution system, except connections of fire hydrants and those made pursuant to agreements entered into by the City prior to the effective date of the declaration of the emergency;

b) Restrictions on the uses of water in one or more classes of water use as described in section 2(d), wholly or in part;

c) Restrictions on the sales of water at coin-operated facilities or sites;

d) The imposition of water rationing based on any reasonable formula including, but not limited to, the percentage of normal use and per capita or per consumer restrictions;

e) Complete or partial bans on the waste of water; and

f) Any combination of the measures in sections 5(a-e) as the governing body of the City or authorized city official may deem appropriate and / or necessary.

Section 6. Emergency Water Rates. Upon the declaration of a water supply emergency as provided in Section 3(c), the governing body of the City shall have the power to adopt emergency water rates by ordinance designed to conserve water supplies. Such emergency rates may provide for, but are not limited to:

(a) Higher charges for increasing usage per unit of use (increasing block rates);

(b) Uniform charges for water usage per unit of use (uniform unit rate); or

(c) Extra charges in excess of a specified level of water use (excess demand surcharge).

Section 7. Regulations. During the effective period of any water supply emergency as provided for in Section 3(c), the mayor (water superintendent or other authorized city official) is empowered to promulgate such regulations as may be necessary to carry out the provisions of this ordinance, any water supply emergency resolution, or emergency water rate ordinance. Such regulations shall be subject to the approval of the governing body at its next regular or special meeting.

Section 8. Violations, Disconnections and Penalties.

(a) If the mayor, water superintendent, or other authorized city official or officials charged with implementation and enforcement of this ordinance or a water supply emergency resolution learn of any violation of any water use restrictions imposed pursuant to Sections 5 or 7 of this ordinance, a written notice of the violation shall be affixed to the property where the violation occurred and the customer of record and/ or any other person known to the City to be responsible for the violation and / or the correction of said violation shall be provided with either actual or mailed notice. Said notice shall describe the violation(s) and order that the noted violation(s) be corrected, cured or abated immediately or within such specified time as the City determines is reasonable for such correction, cure or abatement under the circumstances. In the event the order is not cured within the time period given in the notice, the City may terminate water service to the customer subject to the following procedures:

(1) The City shall give the customer notice by mail or actual notice that water service will be discontinued within a specified time due to the violation(s) and that the customer will have the opportunity to appeal the termination by requesting a hearing scheduled before the City governing body or a city official designated as a hearing officer by the City governing body;

(2) If such a hearing is requested by the customer charged with the violation, the customer shall be given a full opportunity to be heard by the City governing body or the city official designated as a hearing officer by the City governing body before termination is ordered; and

The City governing body or the city official designated as a hearing officer by the City governing body shall make findings of fact and order whether service should continue or be terminated.

(b) A fee of \$50.00 shall be paid for the reconnection of any water service terminated pursuant to subsection (a). In the event of subsequent violations, the reconnection fee shall be \$200.00 for the second reconnection and \$300.00 for any subsequent additional reconnections within a 1 year period.

(c) Violations of this ordinance shall be a municipal offense and may be prosecuted in Municipal Court. Any person so charged and found guilty in Municipal court of violating the provisions of this ordinance shall be guilty of a municipal offense. Each calendar day in which a violation is observed shall constitute a separate offense. The penalty for an initial violation shall be a mandatory fine of \$100.00. In addition, such customer may be required by the Court to serve a definite term of confinement in the city or county jail which shall be fixed by the Court and which shall not exceed 30 days. The penalty for a second or subsequent conviction shall be a mandatory fine of \$200.00. In addition, such customer shall serve a definite term of confinement in the city or county jail which shall be fixed by the Court and which shall not exceed 30 days.

Section 9. Emergency Termination. Nothing in this ordinance shall limit the ability of any properly authorized city official from terminating the supply of water to any or all customers upon the determination of such city official that emergency termination of water service is required to protect the health and safety of the public or for any other emergency as required or authorized by ordinance or as deemed necessary of the City by such city official or the governing body of the City.

Section 10. Severability. If any provision of this ordinance is declared unconstitutional, or the application thereof to any person or circumstance is held invalid, the constitutionality of the remainder of the ordinance and its applicability to other persons and circumstances shall not be affected thereby.

Section 11. This ordinance shall become effective upon its publication in the official city newspaper.

Passed by the governing body this 10th day of August, 2012.

Neal Wallace, Mayor

ATTEST:
LaNell Knoll, City Clerk

ag2111

Colony declares water warning

(Published in The Anderson County Review Tuesday, August 21, 2012)

City of Colony

RESOLUTION NO.12-R001

A RESOLUTION OF THE CITY OF COLONY DECLARING A WATER WARNING

AS AUTHORIZED BY ORDINANCE #421, SECTION 3, PARAGRAPH B.

BE IT RESOLVED BY THE GOVERNING BODY OF THE CITY OF COLONY, KANSAS:

WHEREAS, the City of Colony is experiencing a major water supply shortage due to drought conditions and significant demands placed on those water supplies therefore causing supplies to significantly decline.

WHEREAS, the City's water utility must reduce demand on the system and request its

customers to restrict all Class 1 watering (water used for outdoor watering; either public or private, for gardens, lawns, trees, shrubs, plants, parks, golf courses, playing fields, swimming pools or other recreational areas; or the washing of motor vehicles, boats, trailers, or the exterior of any building or structure) during the period of warning to conserve on water consumption.

WHEREAS, the Governing Body has the authority to declare a water warning as authorized by City of Colony Ordinance #421, Section 3, Paragraph B.

THEREFORE BE IT RESOLVED, that the Governing Body of the City of Colony hereby declares a water warning in the City of Colony. This declaration of a water warning shall continue until such time that it is declared by resolution of the Governing Body to have ended.

Neal Wallace, Mayor

ATTEST:
LaNell Knoll, City Clerk

ag2111

Notice to settle Borrer estate

(First published in The Anderson County Review, Tuesday, August 7, 2012)

IN THE DISTRICT COURT OF ANDERSON COUNTY, KANSAS

In the Matter of the Estate of MAX D. BORROR, Deceased.

Case No. 11-PR-2

NOTICE OF HEARING

THE STATE OF KANSAS TO ALL PERSON CONCERNED:

You are hereby notified that a petition has been filed in this court by Max D. Rockers, the duly appointed, qualified and acting administrator of the estate above-captioned, praying that petitioner's acts be approved; his waiver of appointment be approved; the heirs be determined; the estate be assigned and distributed to the persons entitled thereto; the court find the allowances requested for attorney's fees

and expenses should be allowed; the costs be determined and ordered paid; the administration of the estate be closed; upon filing of receipts, petitioner be finally discharged as administrator and released from further liability.

You are required to file your written defenses thereto on or before the 30th day of August, 2012, at 9:00 a.m. in the District Court, Garnett, Anderson County, Kansas, at which time and place the cause will be heard. Should you fail therein, judgment and decree will be entered in due course upon the petition.

MAX D. ROCKERS
Administrator

Terry J. Solander #07280
503 S. Oak St. - P.O. box 348
Garnett, KS 66032-0348
785-448-6131; FAX: 785-448-2475
solander@embargo.com
Attorney for Administrator

ag8t3

Colony to ask for sewer help

(Published in The Anderson County Review, Tuesday, August 21, 2012)

Notice of Intent to File Application

The City of Colony, Kansas, intends to file an application with the U.S. Department of Agriculture, Rural Development for financial

assistance for sewer improvements in the City of Colony.

/s/ Neal Wallace,
Mayor

Aug. 7, 2012

ag2111

Notice of judgment filed

(First published in The Anderson County Review Tuesday, August 14, 2012)

NOTICE OF PUBLICATION

TO: DUANE CAMPBELL Jr

You are hereby notified that on 4/1/12, the Plaintiff Credit Management Services, Inc., filed a Complaint in the COUNTY Court of DODGE County, Nebraska, against you shown as Case Number C112 471 . The object and prayer of which is a judgment in the amount of 894.05, plus court costs, pre-judgment interest and attorney fees, if applicable.

The Complaint prays that judgment be entered against you. You are hereby notified

that you must answer the Complaint on or before 9/27/12 at the COUNTY court of DODGE County, FREMONT Nebraska.

DANA KAY FRIES #22411
JANE J. RICHARDSON #19833
TESSA P. HERMANSON #23179
JESSICA L.V. PISKORSKI #24243
BRADY W. KEITH #24305
SETH W. YOUNT #24762
PO Box 1512
Grand Island, NE 68802
308 398-3801

Attorney for Plaintiff

ag14t3

Notice to settle Clark estate

(First published in The Anderson County Review, Tuesday, August 7, 2012)

IN THE DISTRICT COURT OF ANDERSON COUNTY, KANSAS

In the Matter of the Estate of Richard Franklin Clark, Deceased.

Case No. 11 PR 23

NOTICE OF HEARING

THE STATE OF KANSAS TO ALL PERSONS CONCERNED:

YOU ARE HEREBY NOTIFIED that a Petition for Final Distribution has been filed in this Court by Brenda Lee as the executor of the estate of Richard Franklin Clark, praying for a final settlement of the estate, approval of her acts, proceedings and accounts as executor, allowance for attorney fees and expenses,

adetermination of heirs, devisees and legatees entitled to the estate and assignment to them pursuant to the will of Richard Franklin Clark.

You are required to file your written defenses thereto on or before August 30, 2012 at 9:00 a.m. of said day, in said Court, in the City of Garnett, in Anderson County, Kansas, at which time and place said cause will be heard. Should you fail therein, judgment and decree will be entered in due course upon the Petition.

Brenda Lee, Petitioner

Mark Doty
GLEASON & DOTY, CHARTERED
401 S. Main, Suite 10
PO Box 490
Ottawa, KS 66067-0490
(785) 242-3775 Fax (785) 242-3855
Attorney for Petitioner

ag7t3

BUY 3, GET 1 FREE
ON CLASSIFIED DISPLAY ADS!

The Anderson County
Review

Reach over 16,000 readers with placement in the Review!
We get the word out - guaranteed!

(785) 448-3121 • FAX (785) 448-6253 • review@garnett-ks.com

FOR RENT

Newly decorated - space on Hwy. 59 in Garnett for offices or retail. Call (785) 448-9045 or (785) 448-6582. ap17tf

House in the country - Scipio area. 1/16 mile off blacktop. 3 bedrooms, 1 bath, CH&CA, natural gas, rural water. Available September 1st. \$600/month + deposit and references. Herman Ackmann (913) 886-7302. ag7tf

820 W. 9th in Garnett - 3 bdrm, 2 bath, large yard, garage, central heat & air, \$600/mo. \$600 deposit. (785) 893-2150. ag14t2

1 bedroom - apartment, partially furnished. No pets. (785) 448-3158 or (785) 448-8676. ag14t2

3 bedroom - very clean, CH & CA, \$500/month. (785) 418-5435. ag14tf

Clean - 2 bedroom, 1 bath, Garnett, 400 1/2 N. Oak. Section 8 welcome. (913) 731-1800. ag21t1*

2 bedroom - mobile home for rent in Garnett. \$300/month. (913) 669-9599. ag21t2

2 bedroom - 2 bath, mobile home in Garnett, very nice, \$400/month. (913) 669-9599. ag21t2

Apartment - Comfortable, 1 bedroom, partially furnished or unfurnished, \$325/month. References and deposit required. No smoking, no pets. (785) 448-2980. ag21t2

MAKE MONEY USE THE CLASIFIEDS!

REAL ESTATE

Benjamin Realty
Sherry Benjamin, Broker
Land • Homes • Commercial

201 N. Maple
Garnett, KS 66032
benjaminrealty@earthlink.net

Office: (785) 448-2550
Home: (785) 241-0532
Cell: (785) 304-2029

CLICK
www.garnettrealestate.com
HERE!

Property Source, LLC
913-884-4500
YOUR SOURCE FOR GREAT INVESTMENTS!
LAND-FARMS
INVESTMENT PROPERTY
RESIDENTIAL

CARS & TRUCKS

BREE
Auto Sales
www.breeautosales.com

Bank Financing!
Second Chance Financing!

Wellsville, KS
(785) 883-2913

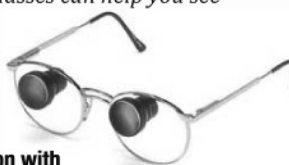
Call Toll Free:
888-811-2277

Serving surrounding communities since 1998.

BREE
Auto Sales
www.breeautosales.com

Living with VISION LOSS?

If you've been diagnosed with macular degeneration, find out if special microscopic or telescopic glasses can help you see better. Even if you have been told nothing can be done you owe it to yourself to seek a second opinion.



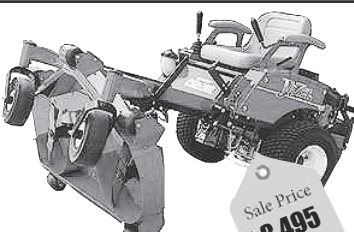
Call today for a free phone consultation with **Dirk M. Gray, OD**
Toll Free: 308-345-5800

locations throughout Kansas

COUNTRY CLIPPER
ZERO-TURN LAWN MOWERS

Drought Sale
Lowest Prices of the Year!

- Patented Stand Up Deck
- Patented Joystick or Traditional Dual Lever Steering Options
- Articulating Front Axle & Deck on most models
- One Year Warranty on All Belts

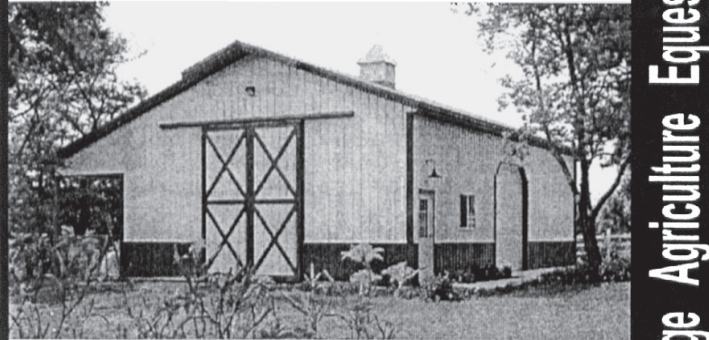


0 DOWN
% FOR 36-48 MONTHS
PAYMENTS UNTIL APRIL 2013

Heck's Small Engine
785-893-1620
6 mi N of Westphalia

Jonsered
REACH FOR THE RED

ASTRO BUILDINGS
Custom Designed Buildings
Professionally Engineered
Quality Materials
Strong Construction
Insured Crews



Millers Construction, Inc.

Everett Miller (785) 448-6788 SINCE 1980 Rodney Miller (785) 448-3085

30' x 48' x 16' RV Shed
\$18,500



Two 12'x14' Overhead Doors, One 3'-9" Lite Entry Door, One 3'-x2' Slider Window, Drive-Thru RV Storage

Prices include: DELIVERY & INSTALL on your level site. Travel charges may apply. Wainscot, Soffit, Cupola and Fascia not included in this price.

QSI
Quality Structures, Inc.

Material Only Kits Now Available!
www.qualitystructures.com • (800) 374-6988

Call for FREE information and estimates

Experience the QSI Advantage

- Free Estimates
- Free On-Site Consultation
- Fully Insured
- 5-yr Workmanship Warranty
- Pre-engineered for code laws
- Licensed ICC General Contractor
- 3-Ply Laminated Posts (60 year warranty)
- Steel Roof and Sides (40 yr. warranty)
- 16 colors available
- 8' o/c Post Spacing
- 4' o/c Truss Spacing
- 90 MPH Wind Load
- 30lb Truss Load
- Site Preparation available

Reserve seats for alumni banquet by Aug. 25

Churches: August 12 scripture at the Christian Church was II Corinthians 4:3-7. Pastor Mark McCoy presented "Back to School Appreciation and Dedication Service"-guests were the staff, teachers, and administrators from Crest and the surrounding districts. Prayer and coffee 9 a.m. every Sunday; Men's Bible Study at the church 7 a.m. Tuesday. Infusion group at Randy Riebel's 7 p.m. Monday; Sept. 12-Working Wonders Christian Women's Council, 7 p.m.; all women welcome.

August 12 scripture at the United Methodist Church was Psalm 130:1-8, II Corinthians 9:6-15 and John 6:16-35. Pastor Leslie Jackson presented the sermon.

Historical Society: The Anderson County Historical Society meets August 23 at the Lone Elm Community building at 6:30 p.m. This is a carry-in dinner, bring your own table service. Mike and Jean Johns are hosts. Jean will present the program by telling about her spinning wheel, rugs, and craft items. Everyone is welcome to attend.

Alumni: Alumni members must send in their alumni banquet payments soon. Tickets are \$12.00 each for pre registration. The caterer must be notified no later than August 25. Tickets at the door are \$14.00 each. Tickets for the alumni meeting only are \$3.00 each. The alumni banquet and meeting is Saturday, Sept. 1 NOT 3. Questions may be referred to Linda Barnett Ellis, secretary at 1872 Haskell Road, Ottawa, KS 66067 or phone her at 785-242-1338. Other committee members are Debbie Barnett Troxel, phone 620-365-5941, Linda Weatherman Hess, 785-947-1627 or Arvin Clemons, 620-365-2798.

Colony Day: Colony Day shirts are available at the Garnett State Savings Bank in Colony for \$10. The quilt, made by Charlene Tinsley's granddaughter Jessica Stalford, is also on display at the bank.

Cakes are needed for the cakewalk. Phone Mary Scovill 620-852-3137 or you may leave at Rural Water office.

For the Mayors decorated cookie jar contest, please leave cookie jars filled with cookies at the Colony Foods Store for display. Spectators are welcome to watch Mayor judge by sampling the cookies at 2 p.m. Cookie jars will be auctioned to the highest bidder at 2:30 p.m. on Broad Street outside the store.

Leave baskets for the basket auction at Colony Foods also. If storeowner Jeannie Ray is not open, please leave baskets with Tammy Bowen at the Rural Water office.

Colony Day offers a full schedule for the day on Sept. 1. It begins at 7 a.m. with a fun run/walk registration. The Colony Lions Club offers breakfast 7 to 9 a.m. The Colony Diner will be open from 9 a.m. until 2 p.m. serving breakfast from 9 until 11 a.m. and lunch 11 a.m. to 2 p.m. A supper is offered by Garnett State Savings Bank and served by the Colony Fire Department members at 5 p.m. Following the supper the day ends with the quilt raffle and a grand prize drawing of a \$500 gift card to Big Cedar Lodge at Branson, MO.

Around Town: We welcome the following new teachers at Crest this year - Levi Arnett, Voc instructor, Terry Messenger, Middle School Social Studies teacher and Ben Vaughn, high school girl's basketball coach, high school track and middle school football coach. We also



by Mrs. Morris Luedke
Contact (620) 852-3379 or colonynews@ckt.net with Colony news.

welcome Cheri Michael, new bus driver, who joins Stephen Thomas and Ron Walters this year.

Nicole Trabuc, daughter of Butch and Leanne Trabuc was among more than 4,200 students that graduated from the University of Houston. Nicole, an Optometry, OD major, graduated from Crest High School in 2005.

Ed and Nancy Ellington were among family members who enjoyed a recent weekend at Beaver Lake, near Rogers, AR. Thirty-two Ellington members attended.

August 12 after church guests of Bob and Mary Scovill were their daughter Dodie, Jasmine, Dominic, Angie and friend Rusty. That evening Ron and DeDe McMullen joined them for a movie night.

Working at the election poll Tuesday were Bonnie Vincent and Katherine Weldin for Indian Creek Township, Charlotte Wallace and Dana Spencer for Ozark Township. There were 119 voters.

Olive Kresge has been a recent patient at Allen County Hospital. She is home and her family and friends wishes her a speedy recover.

Sympathy is expressed to Mary Scovill and family at the death of the biological father of Rebecca Nettles and Scott Beal, children of Mary's. He passed away August 4. Graveside services were the 25th at the Butts Cemetery, Leon, KS.

Calendar: August 27-Allen/Anderson Deer Creek Watershed, City Hall community room, 8 p.m.; 29-Court, City Hall community room, 6 p.m.; City council meeting follows, 7 p.m.

School Calendar: 25-high school volleyball at Northeast Arma, 9 a.m.; 27-Jr. Varsity volleyball at Yates Center, 4:30 p.m.; 28-high school volleyball at Yates Center, 4 p.m.

Meal Site: 24-chicken salad, broccoli, cheese soup, bun, cantaloupe; 27-sloppy joe, pasta salad, pickled beets, bun, fruit cup; 29-tator tot casserole, winter blend veggies, yeasty roll, brownie. Games played each meal day. Phone 852-3479 or meal reservations.



THE ANDERSON COUNTY REVIEW 08-21-2012 / Photo Submitted

Garnett Elementary School principal Krista Hedrick said she was grateful for the parents, students and staff who helped make the first day of school at the new building a big success. The students wore their T-shirt which matched their pod color. This helped navigate students, parents and staff through the building during the first two days. Parents were also very patient. For more information or to discuss concerns regarding Garnett Elementary School, call Hedrick at (785) 448-3177. The T-shirts were sponsored by various local businesses including: Anderson County Review, Apple Bus, AuBurn Pharmacy, Beckman Motors, Brummel Farm Service, Farm Bureau, Farmers State Bank, Feuerborn Family Funeral Service, Front Row Sports, Garnett Lions Club, Garnett Rotary, Garnett State Saving Bank, Garnett True Value, Golden Heights Living Center, Hayes Brand Molding, Sandi Otipoby, DDS, Patriots Bank, Garnett Pizza Hut, Sandra's Quick Shop, C.D. Schulte Agency, State Farm Insurance and Taylor Forge.

Public health advisories, warnings on blue-green algae

TOPEKA - The Kansas Department of Health and Environment (KDHE) samples recreational bodies of water for cyanobacteria, commonly called blue-green algae, when the agency is alerted to a potential algae bloom.

When harmful algal blooms are present, KDHE, in cooperation with the Kansas Department of Wildlife, Parks and Tourism and other lake managers where appropriate, responds by informing the public of these conditions. Based upon sampling results and established health risk levels, the following Warnings and Advisories are in place.

KDWPT reminds visitors that when a lake is under an Advisory or Warning, marinas, lakeside businesses, and park camping facilities remain open for business, although swim beaches will be closed. Park drinking water and showers are safe and not affected by the algae bloom. Also, it is safe to eat fish caught during a harmful blue-green algae outbreak, as long as consumers clean and rinse the fish with clean, potable water; consume only the fillet portion; and discard all other parts. People should also wash their hands with clean, potable water after handling fish taken from an affected lake.

As a result of this week's water sampling, the health advisory has been lifted at Atchison County Park Lake.

When an advisory has been

lifted, health officials say visitors to the lake should still exercise caution and look out for algae blooms in the water, as conditions can change quickly depending on the weather. Some algae blooms can look like foam, or a thick slurry. The blooms can be blue, bright green, brown or red, and they may look like paint floating on the water. However, some blooms may not affect the appearance of the water.

Current Warnings & Advisories

WARNING: High levels of toxic blue-green algae have been detected. A Public Health Warning indicates that water conditions are unsafe and direct water contact (wading, skiing and swimming) is prohibited.

Kansas public waters currently under a "Warning" status:

- Antioch Park Lake (South), Johnson County
- Central Park Lake, Shawnee County
- Centralia Lake, Nemaha County (Upgraded from Advisory)
- Harvey County East Lake, Harvey County
- Harvey County West Park

Lake, Harvey County

- Logan City Lake, Phillips County
- McPherson County SFL, McPherson County
- Memorial/Veterans Lake - Great Bend, Barton County
- South Lake Park, Johnson County

When a Warning is issued, KDHE recommends the following precautions be taken:

- Humans, pets and livestock do not drink lake water
- Water contact is prohibited. Avoid swimming, wading or other activities with full body contact of lake water
- Clean fish and rinse with clean water; consume only the fillet portion, and discard all other parts
- Do not allow pets to eat dried algae
- If lake water contacts skin or pet fur, wash with clean potable water as soon as possible
- Avoid areas of visible algae accumulation

ADVISORY: Harmful blue-green algae have been detected. A Public Health Advisory indicates that a hazardous condition exists. Water activities like boating and fishing may be safe; however, direct contact

with water (i.e., wading, swimming) is strongly discouraged for people, pets and livestock.

Kansas public waters currently under an "Advisory" status:

- Brown County State Fishing Lake, Brown County
- Chisholm Creek Park Lake North, Sedgwick County
- Deanna Rose Farmstead, Johnson County
- Riggs Park Lake, Sedgwick County

When an Advisory is issued, KDHE recommends the following precautions be taken:

- Humans, pets, and livestock do not drink untreated lake water
- Clean fish and rinse with clean water; consume only the fillet portion, discarding other parts
- Do not eat or allow pets to eat dried algae
- If lake water comes in contact with skin or pet fur, wash with clean potable water as soon as possible
- Avoid areas of visible algae accumulation

KDHE will continue to monitor these public waters and will update these statements as conditions warrant.



SPECIALIZING IN CLEARANCE GROCERY ITEMS		
BAKED GOODS NOW HERE	REAL AMERICAN SLICED CHEESE 5 LBS \$9.49	FREE COFFEE & DONUTS EVERY SATURDAY MORNING
MILK \$2.89 GALLON	YOGURT SELECTION \$1.89/FLAT 24 COUNT	CHECK OUT OUR NEW ALDI'S ISLE

Community Country Store

WE WELCOME EBT CUSTOMERS

2 MILES WEST OF GARNETT ON 7TH ST
MON-FRI 8AM - 6PM
SAT. 8AM - 3PM
CLOSED SUN.
785-448-0010

There's now a new way to buy photos that were shot for the paper...

Every digital photo for a specific event, put on YOUR media... **\$9.99 ONLY**
(FLASH DRIVE ONLY)

Every digital photo for a specific event, put on a CD... **\$14.99 ONLY**

Now you can do with them what you wish!
Email them to relatives...
make great screen savers...
make your own prints at your favorite store.

We still offer professional prints of individual shots.
Call or stop by for details.



Buy Here Pay Here!

We Say Yes!

Don't worry about your credit, we specialize in 1st time buyers, repos, bankruptcy, charge offs, slow pays, self employed, divorce and more.

2007 Ford Taurus

\$165*

#F1587
*Bi-weekly payments, plus sales tax and administrative fee. 48 month financing. With approved credit.

2007 Chrysler Town & Country

\$165*

#F1591
*Bi-weekly payments, plus sales tax and administrative fee. 48 month financing. With approved credit.

2003 Chevrolet Impala

40K Miles

\$199**

#F1625
**Bi-weekly payments, plus sales tax and administrative fee. 36 month financing. With approved credit.

2002 Chrysler PT Cruiser

\$199**

#F1626
**Bi-weekly payments, plus sales tax and administrative fee. 36 month financing. With approved credit.

2007 Ford 500

\$165*

#F1664
*Bi-weekly payments, plus sales tax and administrative fee. 48 month financing. With approved credit.

2007 Ford Taurus

\$165*

#F1630
*Bi-weekly payments, plus sales tax and administrative fee. 48 month financing. With approved credit.

2001 Oldsmobile Intrigue

40K Miles SHARP!

\$199**

#F1632
**Bi-weekly payments, plus sales tax and administrative fee. 36 month financing. With approved credit.

2004 Pontiac Grand Am

\$199**

#F1633
**Bi-weekly payments, plus sales tax and administrative fee. 36 month financing. With approved credit.

ADVANTAGE

402 N. Main • Ottawa, KS
785-242-5100 • www.AdvantageFordOttawa.com

2%

Did you know junk mail mass mailings have as little as a 2% response rate with customers?

Advertise where people read.

The Anderson County Review

(785) 448-3121