



Probitas,
virtus, integritas
in summa.

— ONE U.S. DOLLAR —
AUGUST 14, 2012
SINCE 1865 • 146th Year, No. 51

by, Harris, Kincaid, Lone Elm, Mont Ida, Scipio, Selma, Welda, Westphalia — KANSAS

www.garnett-ks.com | (785) 448-3121 | review@garnett-ks.com



FAIR RESULTS
See photos and results of the Anderson County Fair. Inside.



Car Flipped at Demolition Derby.
See Page 1B

FIND US ON FACEBOOK

facebook

Look for The Anderson County Review on Facebook to get breaking news updates.

E-statements & Internet Banking



GSSB

Member FDIC 1899-2012 (785) 448-3111

Impact of plant shutdown far reaching



The East Kansas Agri-Energy plant in Garnett is expected to suspend production Oct. 1. Plant officials say the plant may not open until next summer.

Payroll, utilities, business sales likely affected; drought forces decision

BY VICKIE MOSS THE ANDERSON COUNTY REVIEW

GARNETT — The closing of Garnett's ethanol plant, announced last week, likely will have far reaching implications for area residents and businesses.

Up to 35 local people are expected to be unemployed when the plant stops production Oct. 1. Cattle pro-

ducers who rely on corn by-product called DDGs (dried distillers grains) to feed their stock will have to look elsewhere. Businesses will lose the sale of diesel fuel and supplies for more than 100 trucks that traveled to and from the plant every day. More than 500 ethanol plant investors will continue to miss their dividend checks. And Garnett city taxpayers could be forced to pay difference as the city loses tax and utility revenue from its biggest water customer.

The shutdown of the plant may be temporary and is necessary

because of a variety of conditions including the current drought, but the plant may not resume production until next year, East Kansas Agri-Energy board chairman Bill Pracht said last week.

Drought this year decimated the 2012 corn crop, resulting in high prices and low supplies. It's the second consecutive year drought conditions damaged corn supplies and raised the price of corn in reduced supply. Because ethanol is produced from corn, plants rely on a good supply for the product.

But problems with the corn sup-

ply are not the only obstacles facing ethanol plants. The demand for gasoline is down, resulting in surplus gasoline and ethanol stocks, which are used to blend the fuels. Market conditions for ethanol are against a wall, Jere White, director of Kansas Corn Growers, said last month. Several plants across the country have suspended production because of poor conditions.

The East Kansas Agri-Energy plant reduced production capacity by 20 percent April 1, 2012, as a result of last year's poor corn

SEE ETHANOL ON PAGE 3A

Alternative school coming to IPC

Regional school is for students with severe behavioral problems

BY VICKIE MOSS THE ANDERSON COUNTY REVIEW

GARNETT — An alternative school for students with chronic or severe behavioral problems soon will move to the former Irving Primary School building.

The alternative school is part of a cooperative education program run by Greenbush, the Southeast Kansas Education

Service Center. It formerly was housed at Osawatimie State Hospital under the name George York Community School. Now, with the move to Garnett, it will become Irving Academy.

The school will serve schools in the East Central Kansas Special Education Cooperative. That includes eight schools: Paola, Prairie View, Garnett, Louisburg, Pleasanton, Osawatimie, Central Heights, and Jayhawk Linn. Students from the second through 12th grades attend the schools, with an estimated 15-20 students and

SEE SCHOOL ON PAGE 3A

Voters say yes to Sunday liquor sales

Stores open on Aug. 19 as new law goes into effect this week

BY VICKIE MOSS THE ANDERSON COUNTY REVIEW

GARNETT — Local liquor stores could start selling alcohol on Sundays as early as this week, after voters approved Sunday sales Tuesday, Aug. 7.

Both of Garnett's liquor stores, Askins-Beller Retail Liquor and Barney's Liquors, said they plan to be open on Sundays.

Garnett voters in last week's primary election narrowly decided to allow stores to sell

liquor on Sundays after city commissioners in April voted to allow the option, but a petition organized primarily through local churches and signed by 133 people forced the city to bring the question to a public vote.

Voters approved the measure by a vote of 287-265, a margin of just 22 votes. Anderson County Commissioners were expected to conduct a canvass of the votes Monday afternoon to certify the results of the election. The canvass is typically more of a formality, and commissioners will consider if some conditional ballots should count, such as

SEE LIQUOR ON PAGE 3A



Poll worker Mary McCain, left, checks voter registration records for Alisha Fagg and Scott Fagg at the primary election Tuesday, Aug. 7, in Garnett. Alisha Fagg, 19, was voting for the first time since she became eligible.

Poll worker Mary McCain, left, checks voter registration records for Alisha Fagg and Scott Fagg at the primary election Tuesday, Aug. 7, in Garnett. Alisha Fagg, 19, was voting for the first time since she became eligible.

Fire damages Greeley Cafe



THE ANDERSON COUNTY REVIEW 08-14-2012 / Dane Hicks

Greeley Cafe owner Stephanie Katzer watches as firefighters respond to a fire inside the building.

Birthday candle likely culprit, owner says

Owner plans to open in west wing until repairs made

BY DANE HICKS THE ANDERSON COUNTY REVIEW

GREELEY — It took more than 140 years, but the fall-out from Wednesday's fire at the Greeley Cafe may constitute the first time the local gathering spot has been idle since it was built in 1870.

Owner Steph Katzer said she hopes to re-open in the building's west wing until repairs can be made to the east side of the dual-structure, but as of late last week she couldn't estimate a length of time the business would be closed. She said the west side had been closed off from the side where the fire originated, but that smoke damage was apparent.

SEE CAFE ON PAGE 3A



This interior view shows the bar area of the Greeley Cafe.

Craig, Leitch advance to general election

State races show strong conservative slant for legislature

BY VICKIE MOSS THE ANDERSON COUNTY REVIEW

GARNETT — Now, it's on to November.

Winners from last week's primary now must prepare for the general election Tuesday, Nov. 6. Because it's also a presidential election year, turnout in November is expected to be higher than in other elections. Turnout for the Anderson

County primary elections Tuesday, Aug. 7, was estimated at 25 percent.

Local Races

There will be several local races up for grabs in November, including two county commission seats, the county attorney and county sheriff positions.

Tuesday's primary narrowed the field for the two county commission races. In District 2, Republican Bill Craig emerged victorious over challengers Scott Rogers and Ken Miller. Craig received 157 votes over Rogers, 119; and Miller, 91. Craig, who served on the

county commission from 2001 to 2004, will face Democrat Jerry Howarter in November. Howarter was unchallenged in the Democratic primary. Dist. 2 currently is represented by longtime commissioner Dudley Feuerborn, who did not file for re-election.

In District 3, Republican Dr. David Leitch will face incumbent Democrat Gene Highberger. Leitch defeated Pat Callahan in the Republican primary by 142-109.

Other local races did not see primary action but could heat up by November. That includes

the county sheriff and county attorney races, both which already have brought some controversy.

In the sheriff's race, Sheriff Jeff Hupp, a Democrat, is being challenged by a former employee, Vern Valentine, Republican. Hupp fired Valentine, a former ACSO detective, in April of this year after Valentine filed to run for sheriff. Hupp was appointed sheriff last year by local Democrats after the resignation of Scot Brownrigg. Valentine had worked for the county sheriff's department for

SEE PRIMARY ON PAGE 3A



Promote your business or special event here- only \$30. Call (785) 448-3121

NEWS IN BRIEF

COMMODITY DISTRIBUTION

The ECKAN Agency will distribute commodity food items to eligible Anderson County commodity participants on Thursday, August 30th at the ECKAN center, 132 E. 5th, Garnett from 9:00am - 12:00 noon. Please note this is a change in the regular date for commodities distribution for this month only.

RED/WHITE GAMES AUG. 24

The Bulldog Booster Club will be hosting the annual Red/White volleyball games and football scrimmage on Friday, August 24, beginning at 4:30 p.m. All games will be held at the Anderson County High School. Volleyball games will begin at 4:30 with the football scrimmage following the conclusion of the volleyball games. An admission will be charged and school, family and golden age passes cannot be used for these games. Concessions will also be available. Come out and see what our teams are going to look like for the upcoming 2012 Fall Sports season!"

LANDFILL HOLIDAY

The Anderson County Landfill will be closed for Labor Day Sept. 1-3.

HISTORICAL SOCIETY MEETS

The Anderson County Historical Society will meet at 6:30 p.m. Aug. 23 for a meeting and carry-in dinner at Lone Elm Community Building. Jean Johns will give the program. Bring your own table service. Everyone is welcome.

BACK TO SCHOOL CARNIVAL

GES PTO will have a Back to School carnival from 5 p.m. to 8 p.m. Friday, Aug. 31, at the Garnett Elementary School gymnasium. There will be games, prizes, a raffle and food.

IMMUNIZATIONS

Before attending classes in the 2012/13 school year, seventh graders must present documentation of a Tdap and No. 2 Varicella immunizations. Documentation of chicken pox disease by a physician or health department is acceptable. Additionally, students in grades 8-12 must have a Tdap on file if it has been 10 years since last DT@P. Eighth graders must have a No. 2 Varicella on file or documentation of disease.

SEVERE WEATHER ALERT

Anderson County residents who want to get National Weather Service severe weather warnings by phone via the county's CodeRed system should register online at www.andersoncountysks.org, click Public safety/emergency management, or pick up registration forms at the county annex, Garnett City Hall, Garnett Library, Welda Post office, Westphalia Co-op, Greeley City Hall, Kincaid City Hall or Colony City Hall. You must be registered to receive the severe weather warnings by landline or cell phone. For more information contact AC Emergency Management at (785) 448-6797.

DONATIONS, SUPPLIES

The Backpack Brigade is seeking donations of school supplies and backpacks for Crest students who need help purchasing those supplies. Donations are needed within the next couple of weeks. Donations can be sent to an account at GSSB. For more information or to make arrangements for donations of money or supplies, contact Melissa Hobbs at (620) 852-3086, or Kloma Buckle at (620) 852-3367.

CARE GIVER SUPPORT

Anderson County Caregiving Support meets the fourth Monday of each month from 1-2 p.m. at the Southeast Kansas Mental Health Center conference room, 519 S. Elm St., Garnett. For more information call Phyllis at ECKAAA, (800) 633-5621.

REVIEW FREE TO MILITARY

Members of the American military from Anderson County who are currently on active duty can now get the Internet edition of The Anderson County Review free of charge. Service members should e-mail their name, address, present duty station and phone number to admin@garnett-ks.com to receive their username and password to access the weekly pdf file.

HELP FOR ANIMALS

Anyone willing to donate kitty litter, canned dog food or canned cat food, dog and cat toys, paper towels, laundry and cleaning supplies, or newspaper to help support Prairie Paws Animal Shelter can contact Lisa at 785-304-4286.

ANDERSON COUNTY BOARD OF COMMISSIONERS JULY 30

Chairman Dudley R. Feuerborn called the meeting of the Anderson County Board of Commissioners to order at 9:00 a.m. on July 30 at the County Commission Room. Attendance: Dudley R. Feuerborn, Present; Eugene Highberger, Present; James K. Johnson, Absent. Commissioner Johnson was absent due to personal business. The pledge of allegiance was recited. Minutes of the previous meeting were read and approved.

Cereal Malt Beverage License

Commissioner Highberger moved to approve cereal malt beverage license for Beverley Farren, JAW BBQ. Commissioner Feuerborn seconded. Approved 2-0.

Budget Request

Dena McDaniel, Treasurer, met with the commission. She explained her budget request and requested \$.50 per hour for her personnel who do driver's license. They currently receive \$.05 but due to the responsibility she would like to increase it.

GIS

Beth Shaw, Interim Appraiser, and PVD personnel met with the commission concerning GIS mapping. We are the only county in this half of the state and one of about five or six in the state not using GIS mapping. They explained what we currently have that would help in setting up GIS and what would still be required. It was explained how PVD would assist the county in implementing GIS. They are willing to scope out a proposal for the county to proceed from.

Abatements

Abatements B12-167 through B12-169 were presented and approved.

Zone Change

Commissioner Highberger moved to approve Resolution 2012.0730.1 for ZC2012-02 to rezone approximately 5 acres from A-1 to R-E. Commissioner Feuerborn seconded. Approved 2-0.

County Counselor

James Campbell, County Counselor, met with the commission. He updated the commission on discussions he has had with the hospital and our bond counsel. The only way to allow the issuance bonds would be to activate the public building commission. The hospital is creating wording for an advisory question to be on the ballot in November.

Reeder Township

Commissioner Highberger moved to accept the resignation of Mary Graham as Reeder Township Treasurer and to appoint Monica Wilper to the position of Reeder Township Treasurer. Commissioner Feuerborn seconded. Approved 2-0. Meeting adjourned at 12:05 p.m.

LAND TRANSFERS

Donald L. Penson and Patricia A. Penson to Donald L. Penson Trustee, Patricia A. Penson Trustee and Donald L. & Patricia A. Penson Living Trust Dated 7-31-2012, beginning at point 693' East of NW corner NE4 31-19-18, thence East 454', thence South 632', thence West 454', thence North 639' to POB.

Steve Rental Properties LLC to Orval G. Stever, Lots 1, 2, 3, 4, 5, & 6, Block 1, City of Colony; and Lots 7, 8, 9, 10, 11 & 12, Block 10, City Of Colony; and Lots 10, 11 & 12, Block 20, City Of Colony.

Steve Rental Properties LLC to David R. Tinsley and Cindy K. Tinsley, Lot 3 and West 40', Lot 2 Block 39, City Of Colony.

Vanetta R. Longan, Vanetta R. Ashburn a/k/a and Timothy Longan to Patricia J. Sweeney, all Lots 11 and 12 and West 20' Lot 10, Block 4, Bronston Heights Addition To City Of Garnett.

Jess A. Harris to Eric Glaze and Luana Glaze, the North 80' of Lots 4 and 5 in Block 31 in the City of Garnett.

Donald L. Badders and Anna K. Badders to Depoe Farms, NE4 31-22-20.

Dwayne L. Filbrun and Nedra S. Filbrun to Secretary of Transportation of State of Kansas, containing part but not all of a tract of land in SW4 5-20-18. The tract contains 3.87 acres which included 3.00 acres of existing r/w, resulting in an acquisition of 0.87 acres, more or less.

CIVIL CASES FILED

Bank of America NA vs. Douglas D. Adams, Dawn L. Adams John Doe, Mary Doe, State of Kansas Division of Motor Vehicles, petition to foreclose mortgage and quiet title.

JP Morgan Chase Bank, National Assoc. vs. Alberta Bishop, John Doe, Mary Doe, and unknown spouse, asking \$88,045.40.

DOMESTIC CASES FILED

Robin L. Harte vs. Joseph T. Vivona, petition for divorce.

State of Kansas SRS and Amy L. Widga, vs. Eric Leigh Mersman, petition for support.

LIMITED ACTION FILED

Capital One Bank A Banking Association vs. Tayna R. Miller, asking \$773.61.

PMI Mortgage Insurance Company vs. Gregory J. Cowan, asking \$8,994.48.

C-Prop Holdings LLC vs. Jared E. Clark, asking \$230.00.

City of Garnett vs. Raymond Watts, asking \$316.67.

LIMITED ACTION RESOLVED

Bob's Supersaver dba Country Mart Garnett vs. Sandra L. Swanson, \$430.05 plus interest and costs.

Bob's Supersaver dba Country Mart Garnett vs. Stephanie Silvers, \$570.52 plus interest and costs.

Capital One Bank A banking Association vs. Crystal M. Lyda, \$611.02 plus interest and costs.

Olathe Medical Center Inc. Corp vs. Brent W. Ellison, \$617.31 plus interest and costs. LYNV Funding LLC Assignee of Washington Mutual vs. Katrina I. Winters, \$3,800.13 plus interest and costs.

SMALL CLAIMS FILED

Countryside Veterinary Clinic vs. Shawn King, asking \$198.75.

Countryside Veterinary Clinic vs. Linda Lea Holstine and Darrin Gay Holstine, asking \$96.16.

Countryside Veterinary Clinic vs. Russell Stahl and Wendy Desiree Stahl, asking \$409.24.

CRIMINAL CASES FILED

Jack Earl Haverly, new statute, felony drug 4, and use possession with intent to use drug paraphernalia, first appearance set for August 28 at 9:00 a.m.

CRIMINAL CASES RESOLVED

Speeding violations:
Jannette A. Bouldin, \$161 fine.
Rodney L. Brayton, \$273 fine.
Alexandria N. Pearson, \$321 fine.
Robyn D. Hiestand, \$143 fine.
Nathan D. England, \$143 fine.
William G. Percy, \$203 fine.
Anthony James Marsigila, \$291 fine.
Joseph S. Walker, \$279 fine, failure to wear seatbelts, \$10 fine.
Megan A. Delgado, \$221 fine.
Tiffany M. Barker, \$155 fine.
Christopher E. Matthews, \$143 fine.
Jeremy M. Brown, \$143 fine.
Chad William Flinn, \$298 fine.
Nathan W. Felman, \$143 fine.
Matthew T. Hasting, \$179 fine.
Jason M. Wall, \$1449 fine.
Scott Clarke Edwards, \$161 fine

Other:

Jason D. Richardson, vehicle liability insurance required, \$398 fine.
Brandi G. Hudson, \$170 fine.
Dustin W. Snover, defective tail lamp on motor vehicle, \$143 fine, unlawful vehicle registration, \$60 fine.
Britton Lloyd Shuck, liquor purchase/consumption alcoholic liquor by minor, dismissed.

GARNETT POLICE REPORT

Incidents

A report was made on August 3 of criminal damage to property of a Gaze ball valued at \$55 and occurred on East 2nd Avenue.

A report was made on August 5 of burglary and theft of property or services of small laptop computer valued at \$200 and occurred on East 3rd Avenue.

A report was made August 7 of forgery and theft of property or services of \$174 of

groceries and \$20 in cash and occurred on North Maple Street.

ANDERSON COUNTY SHERIFFS' REPORT

Incidents

A report was made on August 1 of theft or property or services and burglary of a shed door hasp valued at \$10, a hydro cell pump valued at \$6,500, an electric motor (350) 7hp valued at \$350, and an air compressor valued at \$200 and occurred on NE Vermont Road.

A report was made on August 2 of criminal trespass and criminal littering to a 2002 Pontiac Grand Prix and occurred on NE 1830 Road.

A report was made on August 6 of obstructing and occurred on Pine Street in Colony.

A report was made on August 6 of aggravated battery and occurred on US 59 Highway.

Accidents

An accident was reported on July 28 when a vehicle driven by Kimberly A. Rosnick, 31, Edgerton, was traveling northbound on US 169 Highway at 900 Road when her vehicle struck a deer.

An accident was reported on August 4 when a vehicle driven by Rodney L. Braton, 55, Garnett, was traveling northbound on U-59 Highway at 1980 Road when his vehicle struck a deer.

JAIL LOG

James Leo Hogan, 18, Garnett, August 2, probation violation, no bond set.

Roger Dean Stewart, 24, Garnett, August 2, failure to appear, bond set at \$2,500.

Michael Lawrence Drimmel, 22, Garnett, August 2, disorderly conduct, fighting words/noisy conduct, and domestic battery, knowing/reckless bodily harm, bond set at \$1,000.

James Anthony Lewis, 29, Garnett, August 3, probation violation, bond set at \$2,500.

Derek James Beck, 25, Garnett, August 4, DWS, no bond set.

Jacob Wayne Heuback, 18, Garnett, August 4, liquor, purchase by minor, bond set at \$500.

Jamison Andrew Herr, 28, Garnett, August 5, disorderly conduct, brawling or fighting, bond set at \$500.

Jessica Marie James, 24, Ottawa, August 6, aggravated battery, case great bodily harm, no bond set.

Karla Sue Wallace, 49, Colony, August 6, obstruction apprehension of prosecution, felony, no bond set.

Zachary Lee Kirkland, 18, Garnett, August 8, sexual battery and lewd and lascivious, exposing to a person under 16 years of age, bond set at \$10,000.

Todd DeWayne Benjamin, 50, Garnett,

August 8, probation violation, no bond set.

Devon Wayne Stamper, 19, Garnett, August 9, liquor, purchase by minor, no bond set.

Jason Peter Stoneking, 18, Garnett, August 9, liquor purchase by minor, no bond set.

JAIL ROSTER

Brian McAdam was booked into jail on July 5 for Anderson County, bond set at \$50,000.

Brandon Dulin was booked into jail on July 5 for Anderson County, bond set at \$50,000.

Andrew Holstine was booked into jail on June 21 for Anderson County, bond set at \$10,000.

Todd Benjamin was booked into jail on August 8 for Anderson County, no bond.

Marvin Headrick was booked into jail on September 28, 2011 for Anderson County for 12 months.

Marcas McSwane was booked into jail on July 2 for Anderson County, waiting docket.

Michael Stevens was booked into jail on June 29, 2011 for Anderson County, awaiting sentencing.

Linda Scheckel was booked into jail on July 5 for Garnett Police Department, no bond.

Connie McCormick was booked into jail on March 28 for Anderson County for 12 months.

FARM-INS

Michael Morris was booked into jail on July 16 as a hold for Linn County.

Billy Dillard was booked into jail on July 26 as a hold for Miami County.

Mark Sharp was booked into jail on July 20 as a hold for Linn County.

James (Rocky) Allen was booked into jail on July 20 as a hold for Linn County.

Dante Daniels was booked into jail on July 12 as a hold for Douglas County.

Alejandro Trevino was booked into jail on July 12 as a hold for Douglas County.

Robert Brewer was booked into jail on July 20 as a hold for Miami County.

Steven Wood was booked into jail on August 2 as a hold for Miami County.

Jason Farley was booked into jail on July 26 as a hold for Miami County.

Tyler Hendry was booked into jail on August 7 a hold for Miami County.

Danny Harper was booked into jail on July 3 a hold for Linn County.

Larry Poage was booked into jail on January 20 as a hold for Miami County.

Phillip Hale was booked into jail on February 3 as a hold for Linn County.

Bernard Brady was booked into jail on April 19 as a hold for Linn County.

Range management specialist reviews best practices for emergency haying, CRP grazing

MANHATTAN – Several counties in Kansas have been approved by the U.S. Department of Agriculture for emergency haying and grazing of Conservation Reserve Program (CRP) acreage due to the extreme drought and shortage of forage this year.

Several factors are important when haying or grazing prairie hay this summer, said Walt Fick, K-State Research and Extension range management specialist.

"If producers haven't cut their hay yet, I would encourage them to do so soon. Harvest date is the most important management decision affecting hay production. Timing affects production, quality, composition, amount of regrowth, and subsequent plant vigor," Fick said.

Producers should consider raising the cutter bar to leave at least a 3-inch stubble, he said.

Maximum yield of native hay generally occurs in August, but waiting until then results in lower quality, less re-growth, and can alter the composition and vigor of stands if done repeatedly over a number of years, Fick said. Plus, peak yield may have already occurred in

drought-stricken counties this year. The quality of prairie hay will keep declining with time.

"Crude protein declines about 1 percentage unit every two weeks during the month of July, and will be no higher than 5 percent by late August when maximum yield normally occurs," he said.

The timing of haying on species composition and vigor of stands can also be important, Fick added.

"Repeated mowing around Sept. 1 can change a bluestem-dominated hay meadow to a stand dominated by broadleaf species. The change occurs because the grasses do not have a sufficient time period to replenish food reserves before frost occurs," he explained.

Grazing of prairie hay this year should be managed carefully, the agronomist said.

"Heavy grazing in the late summer can be detrimental to next year's production. The key is stocking rate. We need to leave enough leaf area so the plants can continue to carry out photosynthesis and store food reserves going into the winter," Fick said.

How much leaf area is

enough? In CRP stands planted with mid-size and tall grasses, a 6- to 8-inch average stubble height, or about 1,000 to 1,500 pounds per acre, would be optimum, he said.

Forage quality will also be low in the late season and livestock producers may want to consider how this could affect the management of their cow herds, including culling decisions, early weaning, and related practices, the range management specialist said.

KANSAS STATEWIDE ADVERTISING
Send your ad to more than 100 Kansas newspapers for as little as \$300. Ask us about other states too.
The Anderson County Review
785-448-3121

You name it, we print it.
Garnett Publishing, Inc..
(785) 448-3121

There's now a new way to buy photos that were shot for the paper...

Every digital photo for a specific event, put on YOUR media... ONLY \$9.99

(FLASH DRIVE ONLY)

Every digital photo for a specific event, put on a CD... ONLY \$14.99

Now you can do with them what you wish!
Email them to relatives...
make great screen savers...
make your own prints at your favorite store.

We still offer professional prints of individual shots.

Call or stop by for details.


The Anderson County
Review
GARNETT PUBLISHING, INC.
112 W. Sixth • Garnett • (785) 448-3121

sell your stuff on
eBay
Let the Review do all the work for you!
Vehicles • Clothing • Equipment
Real Estate • Collectibles
Antiques • Jewelry • You name it!
Call:
(785) 448-3121

NEOSHO COUNTY COMMUNITY COLLEGE
ENROLL FOR FALL
NOW
Semester Classes begin August 20, 2012
www.neosho.edu
900 E. Logan Street
785.242.2067

HELP FOR ANIMALS
Anyone willing to donate kitty litter, canned dog food or canned cat food, dog and cat toys, paper towels, laundry and cleaning supplies, or newspaper to help support Prairie Paws Animal Shelter can contact Lisa at 785-304-4286.


Health Services DIRECTORY

Eye Care

Dr. J. J. Padfield
Optometrist
536 W. 4th Street
Garnett, KS 66032
(785) 448-6879
4501 Clearer II Blvd.
Kansas City, MO 64130
(816) 921-3800

Pharmacy
Maple & Hwy. 31 MON-FRI 8:30am-7pm
Garnett, KS SAT 8:30am-2pm
Next to Country Mart
AUBURN PHARMACY
We accept all Medicare drug plans.
(785) 448-6122

To advertise in this guide, contact Stacey or Kari at The Anderson County Review at (785) 448-3121 or email review@garnett-ks.com

Chiropractic
Chronic Back or Neck Pain?
Ask how the Triton Decompression Traction Therapy can help.
A non-surgical approach for chronic sufferers.

Alternative Medicine

Dr. Glenn D. Bauman
Chiropractic Physician
* ProAdjuster Technique
* Laser Allergy Treatments
* Contemporary Alternative Medicine
* DOT Physicals
* Lab Testing
"Your Wellness Connection"
PROADJUSTER
519 S. Maple, Garnett • 785-448-2422
Fax: 785-448-2427
M/W/F: 8am - 6pm • T-Th: 9am - Noon

Supply & Equipment
CPAP, Oxygen MED EQUIPMENT & SUPPLY
Oxygen Concentrators Wheelchairs: standard or Conserving Devices custom & accessories
Bipap, Cpap and Supplies Commodes
Nebulizers Shower Chairs
Walkers, Canes Raised Toilet Seats
Hospital Beds Lift Chairs
Trapeze Bars Food Supplements
Hoyer Patient Lifts Ostomy Supplies
Personal Accessories General Supplies
REGIONAL HEALTHCARE
(785) 448-5700 or TOLL FREE (866) 654-5700
115 S. Maple • Garnett / Mon-Fri 8-5 or by appt.

Rehabilitation
Short-Term Rehabilitation
Long-Term Care
Respite
Medicare Part A & B, Medicaid and Private Insurance Accepted
Richmond Healthcare and Rehabilitation Center
340 E. South Street
Richmond, Kansas 66080
(785) 835-6135
www.skilledhealthcare.com/richmondhealth

WILSON CHIROPRACTIC CLINIC
Lynn A. Wilson, D.C., P.A.
Keeping Your Back In Action

Treatment For Your Back & Joint Pain
Sports, Auto, and Work Injury Care
414 W. First • Garnett (785) 448-6151
M-T-W-F SAT 8-10
8-5 After Hours By Appt.

LIQUOR...

FROM PAGE 1A

if the voter was properly registered. The canvass occurred after the Review went to press, but unless the canvass resulted in a significant change to the number of votes, Sunday liquor sales will be legal in Garnett and could begin as early as this Sunday, Aug. 19.

Kansas prohibited Sunday liquor sales until 2005, when the law was changed to allow cities and counties to make their own rules regarding the option. Garnett commissioners declined the option initially, but Greeley's city council and Princeton leaders both subsequently approved allowing liquor sales on Sundays.

In 2005 and 2007, representatives of Casey's General Store asked Garnett city commissioners to allow Sunday sales. At those times, owners of both of Garnett's liquor stores opposed the requests and city commissioners voted the issue down both times.

But after Mike and Cathy Barnes purchased one of those liquor stores - the former Rockers Retail Liquor, now Barney's Liquors - earlier

this year, they asked commissioners to again consider the issue. None of the current commissioners had sat on the governing body the last time the Sunday sales question came up. Two of the three, Preston Peine and Dan Morgan, approved the request in April with Mayor Greg Gwin opposed.

In June, a petition signed by 133 qualified city voters was filed asking to bring the Sunday liquor sales question to a public vote. Gwin also signed the petition. Opponents said it was important to protect the sanctity of Sunday by not allowing liquor sales.

During discussion of the issue in April, Carol Beller, an owner of Askins-Beller, said she and her husband would not oppose the request but didn't feel it was necessary. After the election, Pat Beller said the store would be open on Sundays starting Aug. 19.

Barney's Liquors also will start offering alcohol sales on Sunday, Aug. 19. Although the Barneses initially asked for the legislation, Cathy Barnes said she had no comment about the election results.

PRIMARY...

FROM PAGE 1A

14 years.

In the county attorney's race, incumbent Fred Campbell is facing two challengers. He and one of those challengers also are competing for attorney jobs in multiple counties. Campbell, a Libertarian, will be on the ballot in each county in the 4th District - Anderson, Franklin, Coffey and Osage. One of his challengers, Brandon Jones, a Republican, also is the county attorney in Osage County and hopes to be elected in both Anderson and Osage counties, splitting his time between the two. A Democratic challenger, Kathleen Neff of Burlington, has filed only in Anderson County.

November's local races also include three uncontested races, all incumbents likely to hold on to their seats unless written campaigns are launched: County Clerk Phyllis Gettler, Treasurer Dena McDaniel and Register of Deeds Sandra Baugher.

Garnett city commissioners have discussed having an election to decide whether they should increase the number of commissioners from three to five, but it has not yet been determined if that question will appear on the November ballot.

State Races

A wave of conservative Republican victories last week are expected to give Gov. Sam Brownback all the support he needs to push through his agenda next year.

Conservative Republicans triumphed over more moderate candidates in races throughout the state, including local races.

In Senate Dist. 12, which includes Anderson County, Caryn Tyson of Parker beat John Coen of Wellsville by more than 1,000 votes. Tyson took 56 percent of the vote, or 5,979. Coen had 44 percent, or 4,680. Tyson now faces Democrat

Denise Cassells of Mound City.

On the House side, Dist. 4 includes a small part of Anderson County with Kincaid and Lone Elm in the southeastern part of the county. Three people filed for election, but one of those, Arlyn Briggs of Kincaid, did not campaign. The winning Republican candidate was Marty Read, Mound City, with 72 percent of the vote, or 2,388 votes. Lynne Ohara had 23 percent, or 760 votes. Even though he expressed no intention of wanting the job, Briggs managed to get 5 percent of the vote, or 149 votes. Read will take on Democrat Shirley Palmer in November.

Most of Anderson County is represented by House Dist. 5, currently held by Dem. Bill Feuerborn, Garnett. He was not challenged in the primary but will face Republican Kevin Jones of Wellsville in November.

The recent redistricting, completed by a panel of federal judges after legislators failed to submit their own maps, put many of Anderson County's legislators in new districts. That included Republicans Bill Otto of LeRoy, who formerly represented the western part of Anderson County in the House of Representatives, and Pat Apple, a senator who formerly was in the 12th District. Otto was put in House Dist. 76 and lost his bid to Republican Peggy Mast in a three-way race of incumbents. Apple beat out two competitors in Senate Dist. 37.

Federal Race

U.S. Representative Lynn Jenkins, a Republican, will face Democratic challenger Tobias Schlingensiepen in November. Schlingensiepen edged out competitors Robert Eye and Scott Barnhart. Schlingensiepen had 40 percent of the vote, or 11,584 votes compared to Eye's 35 percent or 10,183 votes and Barnhart's 26 percent or 7,575 votes.

ETHANOL...

FROM PAGE 1A

harvest. Plant officials hoped things would turn around this summer, and the corn crop looked good until about mid-June, Pracht said. That's when the heat hit and the rains stopped.

"It's like someone turned on a microwave oven," Pracht said.

Since then, there has been speculation that the plant might suspend production. Pracht said company officials knew it was a possibility, but that didn't make the decision any easier.

"Knowing the impact that this decision has on our communities and families made the decision even more difficult," Pracht said.

The plant employs 35 people

and many will be laid off Oct. 1. Some will stay on for a time to perform maintenance and prepare to "mothball" the plant after the shutdown, which could take three weeks to a month, Pracht said. He couldn't say how many employees would be needed for that process.

"Every effort will be made to treat our employees as best we can. Many of our employees have been with the company since the plant opened," he said.

The East Kansas Agri-Energy plant began production in 2005, although efforts to bring an ethanol plant to Garnett began in 2001. At its peak, the plant produced 40 million gallons of renewable, clean-burning ethanol, 200,000 tons of the livestock feed distiller grains and 5 million pounds of corn oil each

year from more than 16 million bushels of locally-sourced corn, according to EKAE's website.

In an Industrial Revenue Bond agreement with City of Garnett officials, the plant was granted a tax abatement that continues until 2015. Plant officials agreed to pay a business commodity tax instead that amounts to about \$163,000 annually. Improvements such as new buildings don't fall under the tax abatement, so the plant does pay some property tax on other structures. The plant is the city's biggest utility customer; since August 2011, the plant paid \$320,000 in utility costs, mostly for water.

The loss of utility revenue, at the very least, will have a significant impact on the 2013 city budget, city manager Joyce Martin said. Although the

plant is contractually obligated to pay the business commodity tax and property tax on its improvements, Martin said she has to acknowledge the possibility that the city will lose that revenue if the plant does not reopen as planned.

After she heard the news about the plant's closing last week, Martin went back to the drawing board on the city's budget. She's not yet sure how the city will make up the difference.

"We are going to have major decisions to make. That's a tremendous amount of money not to have in your budget," she said. "It's going to affect everything the city does."

CAFE...

FROM PAGE 1A

Katzer said she discovered the fire Wednesday morning, when she noticed neon signs in the windows which are usually lit all night weren't operating when she showed up to open the restaurant and bar for breakfast. She said as she got closer to the main door she said she noticed the window was cracked and she could smell smoke.

"I knew something wasn't right," she said. "It was hot. You could feel the heat."

She said fire investigators tracked the origin of the fire to a trash can inside the restaur-

ant. She said a birthday party was held the night before and a smoldering candle might have been thrown away with other trash from the clean up.

Local historian Dorothy Lickteig said the fire-damaged side of the building dates to 1870, one of several buildings constructed over a 20-year period by a team of local stone masons and developers. The structure served under a number of different owners and proprietors as a drugstore and café and later a gift shop and has been continuously occupied for more than a century as one of the mainstays of the Greeley business community. The west building was added

to the operation in the mid-1970s. The history may make the Greeley Café the second oldest continuously operating business in the county, behind The Anderson County Review, whose roots date to 1865.

"That place has been a gathering spot for the town ever since it was built," Lickteig said.

The fire apparently was oxygen-starved by the closed doors and windows and never became fully involved, although intense heat burned the bar, several booths, and baked wall hangings and paneling inside the bar, Katzer said. She said some equipment would no doubt have to be replaced as well as smoke and water damage.

Lickteig said she could find no reference in Greeley history books to a fire ever having occurred in the structure, although its contents were removed and the building evacuated during a neighboring fire in 1980.

Katzer said Friday she was waiting to meet with insurance adjusters as a starting point to more forward on a plan to reopen the west side.

SCHOOL...

FROM PAGE 1A

around 10 or 11 staff members.

The Irving building will be leased to the cooperative on a year-to-year basis, USD 365 superintendent Don Blome said. All costs are borne by the cooperative.

The alternative school works with students who have chronic or severe disruptive behaviors that interfere with academic performances. Students typically attend the school for a period of time and transition back into regular classes. Some of the classes they attend include anger management; bullying prevention; self esteem; life, social and study skills; peer pressure; tolerance and community service, among others. The program is built around consistent structure and behavior modification. Students who attend typically were recommended for the school by teachers and staff in their home district.


The Irving Academy alternative school is separate from the USD 365 alternative school program. That program is geared to help struggling students graduate, Blome said. Neighbors and parents of IPC students protested a plan in April 2006 to place the district's new alternative school on the front lawn of IPC, and the location was later changed to a mobile unit site west of GEC near the district's shop. Fears about behavior issues from stu-

dents in the alternative school program impacting younger students in the population of GEC were never a major factor in the subsequent years of the program.

Blome said he was not part of the local school system at that time and could not comment. He said he hasn't heard any negative feedback about the current plan.



YOUR LIFE IS A STORY. TELL IT WELL.



Garnett Monument & Glass
126 West Fifth • Garnett, KS 666032
(785) 448-6622
Todd Barnes

- The Perfect Gift -



Capture the humor, grit and public conscience of The Anderson County Review's most popular feature.

Phone Forum T-Shirts \$24.95

Show your support for free speech in Anderson County!



Pre-Order today by calling (785) 448-3121!



Bauman's Is Here When You Need A Lift

Maintain Your Independence With Our Medically Approved Lift Chairs!

24-Hour Emergency Service

Beginning at **\$699** One simple touch of the fingertip control and the power-lift mechanism gently and quietly moves up to a standing, seated or reclining position. Heavy-duty full power lift with unlimited options and styles available. All styles include battery backup in case of power failure.

Bauman's North Edge of Garnett on Hwy. 59
(785) 448-3216 • 1-800-530-5054
OPEN: Mon.-Sat. 9 a.m.-6 p.m.; Closed Sun.

EKAE board made a smart move

Decision to mothball EKAE ethanol plant helps ensure survival of the company

The decision to make a major change in a business operation is seldom easy, but it's far better to make tough decisions early than to put them off until issues become critical. At that point, as we've seen in numerous local businesses and industries in our area over the years, it's often too late to save the ship.

That's why the decision by East Kansas Agri Energy's board of directors last week to temporarily shut down the plant in view of present fuel market conditions and the continuing drought was a good one. Amid the turbulent waters that have beset the market for ethanol and the prospect of alternative fuels in general, the best play is no play at all when every unit of product is produced at a financial loss.

There is one over-riding factor, after all, in every business. While there are many important facets to every commercial operation, there is one that's the most important - making money. Businesses that don't make money don't survive to provide all the other positive aspects they entail. That's why EKAE's decision was a good one. Even grass, beset by drought like we've experienced this summer, has enough sense to go dormant until it rains.

With gasoline prices rising at the pump, it's hard for the layman to understand how supplies of gas can be abundant and demand lower because of the economy - resulting in less demand for ethanol as well, since it's used as a fuel blend. That's the downside of being subject to an oligopoly ruled by refiners and oil producers - you pay what they say you pay, regardless of supply and demand. But while they control price, they don't control consumption, and the lack of demand for fuel, along with the drought and longer term political threats, has torpedoed ethanol.

It's a far cry from the early 2000s, when ethanol enjoyed most-favored fuel status among renewables champions and farmers alike. EKAE's plant, developed from a local initiative and nursed along with hard work and study, opened at the outset of the Katrina Hurricane, when speculators spiked the price of gasoline and fuel, and at a time when the market for corn had yet to be significantly affected by tightening supply. The profits from EKAE for several years were huge, with investors earning their initial stakes back in multiple dividends.

And the community gained as well. Plant jobs, utility payments to the City of Garnett, residual employment in trucking and of course higher prices for local farmers' corn - the economic gains were many. And taxing entities looked forward to a time a few years down the road when the plant's tax abatement would mature, putting its majority on the paying property tax rolls.

By shutting the plant down, the company can conserve cash it has retained for a time, probably a year or more from now, when conditions are better. It's benefits to the community can still translate when conditions are better.

In the meantime, shutting down is the company's best bet for the future.

"I think there's nothing better than seeing a three-chord straight up rock 'n' roll band in your face with sweaty music and three minute good songs."

- Joan Jett

EDITORIAL



by Dane Hicks, PUBLISHER



The rise of food stamp nation

BY RICH LOWRY

NATIONAL REVIEW

Tom Vilsack is one of the most important welfare administrators in the nation. Oh, yeah -- he's also secretary of agriculture.

Two-thirds of the Agriculture Department's budget is devoted to welfare programs. The biggest is food stamps, which is now the nation's second-largest welfare program after Medicaid. Its inexorable growth during the past decade, through good times and bad, is a testament to government's self-generating expansion.



Lowry

Asked what labor wanted, the great 20th-century union leader Samuel Gompers answered, "More." The modern welfare state lives by the same credo. About 17 million people received food stamps back in 2000. Some 30 million received them in 2008. Roughly 46 million people receive them today. From 1 in 50 Americans on food stamps at the program's national inception in the 1970s, 1 in 7 Americans are on them now. Even when the economy is projected to improve in the future, usage of food stamps will remain elevated above historic norms. Food Stamp Nation is here to stay.

One of its pillars is so-called categorical eligibility, which means that if someone is eligible for another welfare program, he is presumptively eligible for food stamps. In 2000, the Clinton administration issued regulations saying that merely getting a noncash welfare benefit could make someone eligible. Getting a welfare brochure or referred to an 800 number for services is enough to qualify in almost all the states. In Vermont, receiving a bookmark with a telephone number and website for services is enough.

Categorical eligibility effectively wiped out the program's old asset test (i.e., you couldn't have \$30,000 in the bank and get food stamps), although income limitations still apply. In the Obama stimulus, the work requirement was suspended, too, and hasn't been restored. The requirement had discourd-

As every level of government works to grow the program, attempts to scale it down are predictably savaged.

There's nothing, apparently, that food stamps can't do.

aged young, able-bodied nonparents from utilizing the program; now there are millions of them on food stamps.

That the food-stamps program is part of the farm bill -- now up for debate in Congress -- is itself a scam, an exercise in rural-urban logrolling that gives everyone an interest in seeing the bill pass.

As every level of government works to grow the program, attempts to scale it back are predictably savaged. When Jeff Sessions, a Republican senator from Alabama, advocated reforms to save \$20 billion out of a \$770 billion budget for food stamps during the next decade, he was portrayed as a Dickensian villain. The New York Democrat Kirsten Gillibrand accused him of not caring about kids and insisted that food stamps are an engine of economic growth, since every \$1 spent on the program allegedly generates \$1.71 in economic activity. There's nothing, apparently, that food stamps can't do.

Needless to say, there are destitute people who need help. But the goal should be to reduce dependence on food stamps to historic levels after the recession, and restore the asset test, re-establish a work requirement and implement a better system for income verification. When almost 15 percent of Americans are on food stamps, the government should reacquaint itself with two words: "too much."

Rich Lowry is editor of the National Review.

Primaries are over; now clean up begins

Many Kansans are happy with the conservative slant that the Kansas Senate has apparently taken based on the outcome of last week's primary elections.

Many Kansans are chagrined at the conservative slant the Kansas Senate has apparently taken based on the outcome of last week's primary elections.

And, postal carriers are thrilled that the flood of mailings has stopped for at least a couple months. Householders will suddenly have new space on their kitchen counters now that the political postcards blizzard is over.

But for insiders at the Statehouse, there are very important things to watch in the next few months...before the new senators take their oath of office.

First will be whether after the general election--or even after the official state canvass board certifies the results of the primary election in districts without a major party opponent--incumbents who have been ousted will resign their offices early. That gives their successors a dab of seniority and a chance to buy into the KPERS retirement system and health insurance program early. We're guessing that ousted moderates aren't going to be thrilled to give their successors that leg-up on starting business.

Second will be the subtle but necessary cleaving of the new conservatives who have defeated politically/socially/



by Martin Hawver KANSAS STATEHOUSE COLUMNIST

fiscally moderate opponents from allegiance to the conservative political action committees that have spent hundreds of thousands of dollars getting them elected.

What's that all about? Well, at some point, though the Kansas Chamber of Commerce and other conservative political action committees have gotten their favored candidate through the primary election, Gov. Sam Brownback is the conservative Republican leader of the state and for his purposes those new members need to have primary allegiance to him.

Brownback and the conservatives who helped financed what they hope will be a dramatic change in the political lean of the Senate will be on many issues next session on the same side. But it is important for a governor to be able

The Anderson County Review's Phone Forum

Record your comments on the topic of your choice at (785) 448-2500, press option 1. You do not need to leave your name. Comments will be published anonymously. Calls may be edited for publication or omitted.

I was just wanting to say that I find it kind of funny that we're in a drought and there are still higher up people in the community that feel their lawns need to be watered. Such as (blank). The lawn is watered daily and when we're in a drought that should not be happening.

I think the City of Garnett and Anderson County needs to give the money back to the people that it was taken from when they got all that money back from KCP&L, instead of buying stupid (deleted) like a freaking new cop car. We don't need those, we need our money back.

This question is for anybody who may be able to give a correct answer. Why did we hire somebody from out of town to contract the tearing down the Garnett High School? Just curious, when we have capable individuals in town that money could have went to.

Watch out for the large holes in the street on the west and east side of Family Care as you turn onto Fourth Street. They are so big they can almost swallow an Equinox.

I want to comment on the 2012 demolition derby in Anderson County. First of all the music wasn't good. You could hardly hear or talk. Second there weren't very many cars, and I'd be ashamed if I was on the fair board to charge admission to those people and nothing. No carnival, no nothing. This is the last time I support the demolition derby if this is what you're going to do.

I have a question. Why is it we're giving free water from the Garnett lakes for stock water because of the drought, when we've got all these watershed lakes around here that landowners got built for them for free and which was built just for that purpose? Taxpayers and utility payers of Garnett who paid for the reservoir and all the lake equipment ought to get a thank you from somebody.

Contact your legislator

Senator Pat Roberts
302 Hart Senate O.B.,
Washington, D.C., 20510
(202) 224-4774, Fax (202) 224-3514
e-mail pat_roberts@roberts.senate.gov

Senator Jerry Moran
2202 Rayburn House Office Building,
Washington, D.C., 20515
(202) 225-2715 Fax (202) 225-5124
www.moran.senate.gov

5th Dist. Rep Lynn Jenkins
130 Connor House Office Building
Washington, D.C., 20515
(202) 225-6601

President Barack H. Obama
1600 Pennsylvania Ave.,
Washington, D.C., 20500

to call the tune, and be the leader in new policy direction. Not political action committees.

And, of course, Kansas Democrats are hoping that none of the above becomes necessary. They're preparing to welcome Republicans who voted for moderate candidates at the primary to join them and vote for the Democratic candidates on the November general election ballot.

That effort isn't going to be subtle at all. Count on it. And after all, this is Kansas, where even Democrats are relatively conservative compared to Democrats in, say, California or New York.

So, while many Kansans are finally clearing off their kitchen counters and yes, we know some of you are hoping that a spouse doesn't decide that the rediscovered countertops would look better if they were granite--there's still political maneuvering to watch.

Unless, of course you just want to turn it off for a couple months and restart the political game in, say, mid-October...

Syndicated by Hawver News Company LLC of Topeka; Martin Hawver is publisher of Hawver's Capitol Report--to learn more about this statewide political news service, visit the website at www.hawvernews.com

FORMERLY THE GARNETT PLAIND DEALER, THE ANDERSON COUNTY REPUBLICAN, THE REPUBLICAN-PLAIND DEALER, THE GARNETT JOURNAL PLAIND DEALER, THE GARNETT REVIEW, THE GREELEY GRAPHIC, THE ANDERSON COUNTIAN.



Published each Tuesday by Garnett Publishing, Inc., and entered as Periodicals class mail at Garnett, Ks., 66032, permit number 214-200.

Postmaster: Send address corrections to: The Anderson County Review P.O. Box 409 - Garnett, KS 66032 (785) 448-3121

Garnett Combines Headed to Topeka Tournament



THE ANDERSON COUNTY REVIEW 08-14-2012 / Photo Submitted

The Garnett Combines men's ball team was sponsored by Brummel's Farm Service. Front row, from left: Marvin Grimes, Kaleb Shaw, Mike Stockton, Freddie Adamson, Jeremy Strack and David Smith; back row: Bat Boy Synjin Stockton, Aaron Nickelson, Pat Nickelson, Joe Malin, Daniel Egan, Bryan Norman and Jared Martin. The team was champion of the Kansas ASA Class C Division 2 Men's Fastpitch Tournament. They will compete in the NAFA World Fastpitch Tournament August 16-19 in Topeka.



THE ANDERSON COUNTY REVIEW 08-14-2012 / Photo Submitted

Bryan Norman won at Garnett races Aug. 4-5. Saturday he won first place in Sportsman I; Sunday he placed third in Sportsman II. Next race is at Lake Afton September 8-9.

Researcher: Physical activity be part of school day, after-school programs

MANHATTAN -- Along with reading, writing and arithmetic, do you know if physical activity will be a big part of your child's school day? What about after school and on weekends -- is your child getting enough physical activity?

According to guidelines from the U.S. Department of Health and Human Services, children ages 6 to 17 need 60 minutes or more of physical activity a day. That means, says a Kansas State University child physical activity expert, that schools should be providing a minimum of 30 minutes during the school day for physical education and/or recess. The same holds true for after-school programs.

"Emerging evidence shows that children do better in school if they have opportunities to be physically active," said David Dziewaltowski, professor and head of the university's department of kinesiology. "Many children do not have opportunities to be active before or after school, so the school day is vitally important. Our work has shown that schools can reverse the trend for increased childhood obesity if they focus on providing activity, especially to those who are most in need."

Dziewaltowski is director of the Youth Health Behavior Research Laboratory at Kansas State University, which provides the Healthy Opportunities for Physical Activity and Nutrition -- or HOP'N -- research and programs. HOP'N looks at strategies to promote healthy eating and physical activity in children.

Health and Human Services

says most of the 60 minutes of daily physical activity recommended for children and adolescents should be in moderate or vigorous intensity aerobic activities, which should be done at least three days a week. Muscle strengthening and bone strengthening activities should each be part of physical activity requirements at least three days a week as well.

Physical activity shouldn't stop when the school day ends. If your child is in an after-school program, Dziewaltowski said it is important that it provides at least 30 minutes of physical activity a day.

"Look for programs that provide activity in the form of free play. If they provide structured activity, examine how much time is spent in actual activity," Dziewaltowski said, adding that it's important the personnel providing the activity know what they are doing.

"Our research has shown that physical activity leaders have to be well trained to provide structured activity or these programs are better off just letting kids play," he said. "Poorly led activity often results in children just standing in line or playing elimination games where the fitter kids play more and leave the unfit kids standing on the sidelines."

Many parents get their kids involved in a youth sport after school. Dziewaltowski says that while youth sports can provide a great physical activity experience, there is a wide variability in the quality of these programs. Leading a youth sport program is a difficult task and

requires a lot of skill.

"Many youth sport coaches are parent volunteers or part-time, paid coaches who have little education in the sport. If they do have some certification, it often is little more than a few workshops," Dziewaltowski said.

It's important for parents to recognize when their child has a coach without the necessary skills to appropriately create a program that positively develops their child or promotes activity.

"Across youth sport there are great coaches at promoting physical activity at every level, and there are less effective coaches at every level," he said. "Parents need to watch practice and be very critical of what is going on. Ideally, every team sport practice should typically include an active warm-up, individual activity, small group activities and then large group activities, regardless of the team sport. This allows for more involvement of all kids rather than just some kids."

Some things to look for in your child's after-school program or sports practice include:

- The amount of time spent actually being physically active at a moderate to vigorous level. Dziewaltowski said this should be more than 50 percent of the total practice time.

- The amount of time children stand in line or on the sideline. Watch to see if the coaches waste a lot of time getting practice started, transitioning between sessions and providing instruction while

kids are standing.

- Does the coach break up the group into smaller groups so the ratio of children to the ball is closer to one ball to four kids, rather than 10 kids to one ball?

- Does the coach use physical activity as a punishment?

- If you spend more time driving your child to his or her competition, such as a soccer or baseball game, than the child is actually participating, evaluate if your child is in the correct program -- especially if the child is in elementary school.

Another way Dziewaltowski suggests to get more physical activity in your child's day is to look for opportunities for active transportation to and from school and programs. Consider walking or biking to school in groups and with an adult coming along for safety of younger children.

When it comes to weekends or for children who are home-schooled, getting outside can be a strong influence on physical activity. Dziewaltowski said to consider active recreation opportunities that promote life-long endeavors, such as fishing and camping, as well as sports such as biking, swimming and golf that families can do together.

"It is important to encourage young people to participate in physical activities that are appropriate for their age, that are enjoyable and that offer variety," Dziewaltowski said.

More information about physical activity guidelines for children is available at <http://www.health.gov/paguidelines/default.aspx>.

Enhance palatability of forages (straw, corn stalks, CRP hay) by using Anipro Liquid Supplements poured over bales.

Three supplements to choose from:
 • Sweet • Hi Protein • Hi Energy
 • Or a Combination
 All provide protein, minerals and vitamins.

For more information and pricing contact:
 Robert Miller
 Anipro/Xtraformance Feeds
 (785) 448-4301



\$9.99*

**PRIME RIB or SIRLOIN
 Friday & Saturday Night**
 includes choice of side, salad and roll

**Price good for dine-in only, offer not valid on catering.*

785-448-2616

On the Square - At the corner of 4th and Oak
 Downtown Garnett

NOTICE

On August the 19th at 6:30pm Democrats will have a meeting. Food will be provided. Come meet and greet all the candidates at the Community Building in Garnett.



INTERNET+

ONLY
\$19.95
 Unlimited Access

- FREE Dial-Up Accelerator
- FREE UNLIMITED Phone Technical Support
- FREE Local Access
- NO CONTRACT
- NO Taxes Added
- NO Deposit / Credit Card
- Set-Up in Minutes!

(888) 332-1616

✈️ • Travel? Local Numbers:
 • 8,000+ U.S. Cities
 U.S. and Canada

• FREE SUPPORT HOURS:
 Mon-Fri 8:00am-7:00pm
 Sat 10:00am-7:00pm
 Sunday CLOSED

VALNET
 200 ARCO Place
 Box 130
 Independence, KS 67301
www.valnet.net



WALK IN SIGN-UP:
 Garnett Publishing Inc.
 112 W. Sixth Street
 Garnett, KS 66032



You Name It, We Print It

Quantities from 25 to 25,000,000

State-of-the-Art Digital Capabilities • New Direct-to-Plate Press • Award-Winning Graphic Design

- Business Cards
- Custom Forms to fit your business
- Custom Computer Forms
- Full-Color Brochures
- Pens, Balloons, Novelties
- Carbonless Forms
- Customized Folders
- Business Cards
- Letterhead
- Envelopes
- Postcards

- Direct Mail Assistance
- Digital Photography
- Latest Technology
- Fastest Service

Same-day estimates are always FREE!

Garnett Publishing, Inc.

785 448 3121

112 W. Sixth Ave. • Garnett, KS 66032

County publishes notice of delinquent property taxes

****THIS IS NOT A TAX FORECLOSURE SALE****
NO PUBLIC AUCTION IS HELD**
 Property is NOT SOLD AT PUBLIC AUCTION until three years have passed from the 1st publication of delinquent tax on a parcel. The following publication is to legally perfect a tax lien against the property for Anderson County and is required by Kansas Statute.

Notice is hereby given that so much of each tract of land described in the following list located in Anderson County, Kansas, as may be necessary for the purpose, will be on the first Tuesday in September, 2012, bid off by one as County Treasurer of said County, in the name of and for Anderson County, at my office in the courthouse, in Garnett, Kansas, for the taxes and charges thereon, for the tax year 2011.

/s/ Dena M. McDaniel
 Anderson County Treasurer
 STATE STATUTE PROVIDES THAT ONLY THE COUNTY MAY BID; NO PRIVATE BIDS PERMITTED. EACH TRACT OR LOT IS SUBJECT TO A FEE OF \$16.00 AND 7% INTEREST PER ANNUM PRORATED.
 Publication indicates tax payments through July 31, 2012.
 Any payments made after this date are not reflected in this publication.

BERTHA MAE ADAMS 1-00501090 467.88 % HONEY WHITCOMB KINCAID, S36, T22, R20, BEG 80'E SE COR" BLK 2, N100' E265', S100', W265' TO POB Subd-KINCAID" Sec-36 Twp-22 Rng-20

CURTIS D BETTINGER 1-03500760 Acres-77.0 1422.94 505, T20, R20, ACRES 7.7, BEG SE COR SW4" N 528', W 660', S 528' E TO POB Sec-05 Twp-20 Rng-20

DANIEL BISHOP 1-00204500 19.74 S19, T20, R20, GOLF CART SHED #26 Sec-19 Twp-20 Rng-20

MAX D & ROBERTA A BORROR 1-00216210 316.90 % MAX ROCKERS CHAPMANS ADD TO GARNETT BLOCK 14 LTS" 9,10 & VAC ALY BET LTS 8,9 SECTION 30 TOWNSHIP 20 RANGE 20" Subd-CHAPMANS ADD TO GARNETT BLK-14 Sec-30 Twp-20 Rng-20

CHRIS & DIANA BOWEN 1-00217280 825.48 GARNETT, S30, T20, R20, BLOCK 56, Lot 20" - 24 S RR, SECTION 30 TOWNSHIP 20 RANGE 20" Subd-GARNETT Blk-56 Lot-20 Sec-30 Twp-20 Rng-20

ZELMA BOWMAN 1-00218390 170.54 MANDOI ADD TO GARNETT, S31, T20, R20" BLOCK 2, Lot 6 - 10 EX RR, SECTION 31 TOWNSHIP 20 RANGE 20" Subd-MANDOI ADD TO GARNETT Blk-2 Lot-6 Sec-31 Twp-20 Rng-20

ZELMA BOWMAN 1-00218400 121.84 MANDOI ADD TO GARNETT, S31, T20, R20" BLOCK 2, Lot 11 - 13, SECTION 31 TOWNSHIP 20 RANGE 20" Subd-MANDOI ADD TO GARNETT Blk-2 Lot-11 Sec-31 Twp-20 Rng-20

THOMAS L & ROBIN K ADAMS 1-03000290 Acres-40.60 29.32 SE4 NW4 EX RD Sec-12 Twp-20 Rng-19

THOMAS L & ROBIN K ADAMS 1-03000350 Acres-16.80 4027.62 COMM 457.3' W NE COR SE4, TH ALG W R2' LN" HWY 59 S79.1' TO POB, 10 N DEGREES W906.5', W263.1' N80 DEGREES W273.6' Sec-12 Twp-20 Rng-19

THOMAS L & ROBIN K ADAMS 1-03000350A Acres-77.70 84.58 SE4 LYG W OF HWY 59, EX BEG SW COR SE4", N800', E1576' TO R/W OF OLD HWY, SWLY ALG' R/W 803', W1490' TO POB & EX COMM 457.3' W NE COR" Sec-12 Twp-20 Rng-19

AIMTOR PROPERTIES, LLC 1-00216150 525.18 LT 10, W1/4" LOT 11 & E2 VAC ALY BET LTS 9 & 10" Subd-CHAPMANS ADD TO GARNETT Blk- 15 Sec-30 Twp-20 Rng-20

LARRY SCOTT & SONIA LIN ALLEN 1-08001120 Acres-214.80 903.22 S2 NW4 & SW4 EX BEG 571'S NE COR SW4 S252.50', W500', N250'E TO POB EX E800' OF S590' OF SW4 & RD" Sec-33 Twp-21 Rng-19

LARRY SCOTT & SONIA LIN ALLEN 1-08001160 Acres-118.90 613.12 W3/4 OF SE4 EX RD Sec-33 Twp-21 Rng-19

LARRY SCOTT & SONIA LIN ALLEN 1-08002420 Acres-80.10 492.50 W2 NE4 EX RD Sec-04 Twp-22 Rng-19

KIMBERLY KAY ANDERSON & DAVID C HEIDRICH 1-06101500 Acres-453.78 S36, T21, R17, ACRES 2.2, BEG NW COR SE4" S360', E270', N360', W270' TO POB EX RD Sec-36 Twp-21 Rng-17

JUSTIN ASHBURN 1-00219190 1.32 % MARY FLEMING MANDOI ADD TO GARNETT, S31, T20, R20" BLOCK 26, Lot 4 E OF RR, SECTION 31 TOWNSHIP 20 RANGE 20" Subd-MANDOI ADD TO GARNETT Blk- 26 Lot-4 E OF RR Sec-31 Twp-20 Rng-20

JUSTIN ASHBURN 1-00700560 13.70 % MARY FLEMING S36, T21, R17 Sec-36 Twp-21 Rng-17

VIOLET M ASKINS 1-00215340 1218.32 LT 4 & V2 VAC ALY BET LTS 4,5" Subd-CHAPMANS ADD TO GARNETT Blk-5 Sec-30 Twp-20 Rng-20

KEITH BABCOCK 1-00100090 65.34 COLONY BLOCK 11 BEG 60'W & 30'W OF" NW COR N TO N LN NW4 E TO HWY SEALG HWY" HWY TO N LN FIRST ST WY TO POB SECTION 06 TOWNSHIP 23 RANGE 19 Subd-COLONY Blk-11 Sec-06 Twp-23 Rng-19

DONALD L & ANNA K BADDERS 1-10200080 Acres-118.00 362.30 S24, T22, R19, ACRES 118, NW4 SE4 & S2 SE4 EX RD" Sec-24 Twp-22 Rng-19

DONALD L & ANNA K BADDERS 1-10500980 Acres-328.60 2283.50 S31, T22, R20, ACRES 328.6, N2 SEC EX RD Sec-31 Twp-22 Rng-20

IAN M & GENINE M BAILEY 1-00218600 133.50 MANDOI ADD TO GARNETT, S31, T20, R20" BLOCK 5, LTS 17, 18, 19, 20 & E10'LT 16" SECTION 31 TOWNSHIP 20 RANGE 20 Subd-MANDOI ADD TO GARNETT Blk-5 Sec-31 Twp-20 Rng-20

DALE P & MARGARET A BAKER 1-00100300 320.32 COLONY BLOCK 18 Lot 7, 8 & 9 " SECTION 06 TOWNSHIP 23 RANGE 19 Subd-COLONY Blk-18 Lot-7, 8 & 9 Sec-06 Twp-23 Rng-19

JOHN T BANKS 1-00211490 844.84 GARNETT BLOCK 13 Lot 52 LTS 11 - 12" SECTION 30 TOWNSHIP 20 RANGE 20" Subd-GARNETT Blk-13 Lot-52 LTS 11 Sec-30 Twp-20 Rng-20

LARRY SPEARS, SONDR BAUGHER 1-00209220 69.22 GARNETT BLOCK 40 Lot Block Info 3 & E2 LT 4 SECTION 30 TOWNSHIP 20 RANGE 20 Subd-GARNETT Blk-40 Lot-3 & E2 LT 4 Sec-30 Twp-20 Rng-20

SONDRA S BAUGHER & LARRY L SPEARS 1-00209230 80.86 GARNETT BLOCK 40 Lot Block Info 5 & W2 LT 4 SECTION 30 TOWNSHIP 20 RANGE 20 Subd-GARNETT Blk- 40 Lot-5 & W2 LT 4 Sec-30 Twp-20 Rng-20

MARVIN G BAUMAN 1-00701360 469.82 MERRILLS ADD TO WESTPHALIA, S36, T21", R17, BLOCK 16, Lot Block Info 12, 13, 14, & 15 SECTION 36 TOWNSHIP 21 RANGE 17 Subd-MERRILLS ADD TO WESTPHAL Blk-16 Lot-12, 13, 14 & 15" Sec-36 Twp-21 Rng-17

STEVEN R & IVY D BEALS 1-00208920 53.44 GARNETT, S30, T20, R20, W37' LT 19 Sec-30 Twp-20 Rng-20

STEVEN R & IVY D BEALS 1-00208930 412.40 Subd-GARNETT Blk- 23 Lot-20 & E3'LT 19 Sec-30 Twp-20 Rng-20

VERNON N & ETNA MAE BELEV 1-00212340 855.76 % GERALD E & MARIE EVE GREENWELL GARNETT BLOCK 29 Lot 19 SECTION 30 TOWNSHIP 20 RANGE 20" Subd-GARNETT Blk- 29 Lot-19 Sec-30 Twp-20 Rng-20

ELIZABETH MARIE BELL 1-00209070 487.98 % RICK BELL GARNETT BLOCK

22 E30'LT16 & W16'LT17" SECTION 30 TOWNSHIP 20 RANGE 20 Subd-GARNETT Blk-22 Sec-30 Twp-20 Rng-20

CLARON E & SHERRY A BENJAMIN 1-00210110 2111.92 S30 T20 R20 Sec-30 Twp-20 Rng-20

BENNETT GRAIN FARMS 1-10500572 552.31 S22, T22, R20, SW4 & S2 NW4 EX RD Sec-22 Twp-22 Rng-20

JERRY L & DONNA M BENNETT 1-03100980 Acres-116.50 945.22 S33, T20, R19, ACRES 116.5, SE4 NW4 & E2" SW4 EX BEG SE COR SW4, W914.3', N195" , E125', N80.7' E789.3', S275.7' TO POB EX RD" Sec-33 Twp-20 Rng-19

JERRY L & DONNA M BENNETT 1-05100990 Acres-62.70 160.51 S12, T21, R19, ACRES 62.7, BEG NW COR" SE4 E2640', S1056' W2640', N1056' TO POB EX RD" Sec-12 Twp-21 Rng-19

JERRY L & DONNA M BENNETT 1-11100130 Acres-82.50 173.51 S24, T22, R20, ACRES 82.5, S2 NW4 EX RD Sec-24 Twp-22 Rng-20

ROBERT & MARY BENNETT 1-00500590 28.10 KINCAID, S36, T22, R20, BEG 80'E SE COR" BLK 2, N100' E265', S100', W265' TO POB Subd-KINCAID" Sec-36 Twp-22 Rng-20

CURTIS D BETTINGER 1-03500760 Acres-77.0 1422.94 505, T20, R20, ACRES 7.7, BEG SE COR SW4" N 528', W 660', S 528' E TO POB Sec-05 Twp-20 Rng-20

DANIEL BISHOP 1-00204500 19.74 S19, T20, R20, GOLF CART SHED #26 Sec-19 Twp-20 Rng-20

MAX D & ROBERTA A BORROR 1-00216210 316.90 % MAX ROCKERS CHAPMANS ADD TO GARNETT BLOCK 14 LTS" 9,10 & VAC ALY BET LTS 8,9 SECTION 30 TOWNSHIP 20 RANGE 20" Subd-CHAPMANS ADD TO GARNETT Blk-14 Sec-30 Twp-20 Rng-20

CHRIS & DIANA BOWEN 1-00217280 825.48 GARNETT, S30, T20, R20, BLOCK 56, Lot 20" - 24 S RR, SECTION 30 TOWNSHIP 20 RANGE 20" Subd-GARNETT Blk-56 Lot-20 Sec-30 Twp-20 Rng-20

ZELMA BOWMAN 1-00218390 170.54 MANDOI ADD TO GARNETT, S31, T20, R20" BLOCK 2, Lot 6 - 10 EX RR, SECTION 31 TOWNSHIP 20 RANGE 20" Subd-MANDOI ADD TO GARNETT Blk-2 Lot-6 Sec-31 Twp-20 Rng-20

ZELMA BOWMAN 1-00218400 121.84 MANDOI ADD TO GARNETT, S31, T20, R20" BLOCK 2, Lot 11 - 13, SECTION 31 TOWNSHIP 20 RANGE 20" Subd-MANDOI ADD TO GARNETT Blk-2 Lot-11 Sec-31 Twp-20 Rng-20

THOMAS L & ROBIN K ADAMS 1-03000290 Acres-40.60 29.32 SE4 NW4 EX RD Sec-12 Twp-20 Rng-19

THOMAS L & ROBIN K ADAMS 1-03000350 Acres-16.80 4027.62 COMM 457.3' W NE COR SE4, TH ALG W R2' LN" HWY 59 S79.1' TO POB, 10 N DEGREES W906.5', W263.1' N80 DEGREES W273.6' Sec-12 Twp-20 Rng-19

THOMAS L & ROBIN K ADAMS 1-03000350A Acres-77.70 84.58 SE4 LYG W OF HWY 59, EX BEG SW COR SE4", N800', E1576' TO R/W OF OLD HWY, SWLY ALG' R/W 803', W1490' TO POB & EX COMM 457.3' W NE COR" Sec-12 Twp-20 Rng-19

AIMTOR PROPERTIES, LLC 1-00216150 525.18 LT 10, W1/4" LOT 11 & E2 VAC ALY BET LTS 9 & 10" Subd-CHAPMANS ADD TO GARNETT Blk- 15 Sec-30 Twp-20 Rng-20

LARRY SCOTT & SONIA LIN ALLEN 1-08001120 Acres-214.80 903.22 S2 NW4 & SW4 EX BEG 571'S NE COR SW4 S252.50', W500', N250'E TO POB EX E800' OF S590' OF SW4 & RD" Sec-33 Twp-21 Rng-19

LARRY SCOTT & SONIA LIN ALLEN 1-08001160 Acres-118.90 613.12 W3/4 OF SE4 EX RD Sec-33 Twp-21 Rng-19

LARRY SCOTT & SONIA LIN ALLEN 1-08002420 Acres-80.10 492.50 W2 NE4 EX RD Sec-04 Twp-22 Rng-19

KIMBERLY KAY ANDERSON & DAVID C HEIDRICH 1-06101500 Acres-453.78 S36, T21, R17, ACRES 2.2, BEG NW COR SE4" S360', E270', N360', W270' TO POB EX RD Sec-36 Twp-21 Rng-17

JUSTIN ASHBURN 1-00219190 1.32 % MARY FLEMING MANDOI ADD TO GARNETT, S31, T20, R20" BLOCK 26, Lot 4 E OF RR, SECTION 31 TOWNSHIP 20 RANGE 20" Subd-MANDOI ADD TO GARNETT Blk- 26 Lot-4 E OF RR Sec-31 Twp-20 Rng-20

JUSTIN ASHBURN 1-00700560 13.70 % MARY FLEMING S36, T21, R17 Sec-36 Twp-21 Rng-17

VIOLET M ASKINS 1-00215340 1218.32 LT 4 & V2 VAC ALY BET LTS 4,5" Subd-CHAPMANS ADD TO GARNETT Blk-5 Sec-30 Twp-20 Rng-20

KEITH BABCOCK 1-00100090 65.34 COLONY BLOCK 11 BEG 60'W & 30'W OF" NW COR N TO N LN NW4 E TO HWY SEALG HWY" HWY TO N LN FIRST ST WY TO POB SECTION 06 TOWNSHIP 23 RANGE 19 Subd-COLONY Blk-11 Sec-06 Twp-23 Rng-19

DONALD L & ANNA K BADDERS 1-10200080 Acres-118.00 362.30 S24, T22, R19, ACRES 118, NW4 SE4 & S2 SE4 EX RD" Sec-24 Twp-22 Rng-19

DONALD L & ANNA K BADDERS 1-10500980 Acres-328.60 2283.50 S31, T22, R20, ACRES 328.6, N2 SEC EX RD Sec-31 Twp-22 Rng-20

IAN M & GENINE M BAILEY 1-00218600 133.50 MANDOI ADD TO GARNETT, S31, T20, R20" BLOCK 5, LTS 17, 18, 19, 20 & E10'LT 16" SECTION 31 TOWNSHIP 20 RANGE 20 Subd-MANDOI ADD TO GARNETT Blk-5 Sec-31 Twp-20 Rng-20

DALE P & MARGARET A BAKER 1-00100300 320.32 COLONY BLOCK 18 Lot 7, 8 & 9 " SECTION 06 TOWNSHIP 23 RANGE 19 Subd-COLONY Blk-18 Lot-7, 8 & 9 Sec-06 Twp-23 Rng-19

JOHN T BANKS 1-00211490 844.84 GARNETT BLOCK 13 Lot 52 LTS 11 - 12" SECTION 30 TOWNSHIP 20 RANGE 20" Subd-GARNETT Blk-13 Lot-52 LTS 11 Sec-30 Twp-20 Rng-20

LARRY SPEARS, SONDR BAUGHER 1-00209220 69.22 GARNETT BLOCK 40 Lot Block Info 3 & E2 LT 4 SECTION 30 TOWNSHIP 20 RANGE 20 Subd-GARNETT Blk-40 Lot-3 & E2 LT 4 Sec-30 Twp-20 Rng-20

SONDRA S BAUGHER & LARRY L SPEARS 1-00209230 80.86 GARNETT BLOCK 40 Lot Block Info 5 & W2 LT 4 SECTION 30 TOWNSHIP 20 RANGE 20 Subd-GARNETT Blk- 40 Lot-5 & W2 LT 4 Sec-30 Twp-20 Rng-20

MARVIN G BAUMAN 1-00701360 469.82 MERRILLS ADD TO WESTPHALIA, S36, T21", R17, BLOCK 16, Lot Block Info 12, 13, 14, & 15 SECTION 36 TOWNSHIP 21 RANGE 17 Subd-MERRILLS ADD TO WESTPHAL Blk-16 Lot-12, 13, 14 & 15" Sec-36 Twp-21 Rng-17

STEVEN R & IVY D BEALS 1-00208920 53.44 GARNETT, S30, T20, R20, W37' LT 19 Sec-30 Twp-20 Rng-20

STEVEN R & IVY D BEALS 1-00208930 412.40 Subd-GARNETT Blk- 23 Lot-20 & E3'LT 19 Sec-30 Twp-20 Rng-20

VERNON N & ETNA MAE BELEV 1-00212340 855.76 % GERALD E & MARIE EVE GREENWELL GARNETT BLOCK 29 Lot 19 SECTION 30 TOWNSHIP 20 RANGE 20" Subd-GARNETT Blk- 29 Lot-19 Sec-30 Twp-20 Rng-20

ELIZABETH MARIE BELL 1-00209070 487.98 % RICK BELL GARNETT BLOCK

ADD TO GARNETT Blk-5 Sec-30 Twp-20 Rng-20

FAYNE CAYLOR 1-00218910 247.34 % CONNIE DEMPSAY MANDOI ADD TO GARNETT, S31, T20, R20" BLOCK 16, Lot 1 - 6 INCL, SECTION 31 TOWNSHIP 20 RANGE 20" Subd-MANDOI ADD TO GARNETT Blk-16 Lot-1 Sec-31 Twp-20 Rng-20

FAYNE CAYLOR 1-00218930 133.08 % GERALDINE DEMPSAY MANDOI ADD TO GARNETT, S31, T20, R20" BLOCK 16, Lot 11 - 20 INCL, SECTION 31 TOWNSHIP 20 RANGE 20" Subd-MANDOI ADD TO GARNETT Blk-16 Lot-11 Sec-31 Twp-20 Rng-20

FAYNE CAYLOR 1-00218940 Acres-.10 1.13 % GERALDINE DEMPSAY MANDOI ADD TO GARNETT, S31, T20, R20" BLOCK 17, ACRES 0.1, Lot Block Info 19 & 20 E RR SECTION 31 TOWNSHIP 20 RANGE 20 Subd-MANDOI ADD TO GARNETT Blk-17 Lot-19 & 20 E RR Sec-31 Twp-20 Rng-20

FAYNE CAYLOR 1-00219180 Acres-.30 42.88 % GERALDINE DEMPSAY MANDOI ADD TO GARNETT, S31, T20, R20" BLOCK 26, ACRES 0.3, Lot Block Info 1.2" & 3 E RR SECTION 31 TOWNSHIP 20 RANGE 20 Subd-MANDOI ADD TO GARNETT Blk-26 Lot-1, 2 & 3 E RR" Sec-31 Twp-20 Rng-20

FAYNE CAYLOR 1-00219200 Acres-1.00 135.38 % GERALDINE DEMPSAY MANDOI ADD TO GARNETT, S31, T20, R20" BLOCK 27, Lot 1 - 10 INCL ACRES 1.1" SECTION 31 TOWNSHIP 20 RANGE 20 Subd-MANDOI ADD TO GARNETT Blk-27 Lot-1 Sec-31 Twp-20 Rng-20

GARY R & JESSICA R CAYLOR 1-04601110 Acres-76.80 325.78 S34, T21, R21, ACRES 76.8, S2 SW4 EX RD Sec-34 Twp-21 Rng-21

GARY R & JESSICA R CAYLOR 1-11001440 Acres-148.00 1502.70 S03, T22, R21, ACRES 148, NW4 EX RD Sec-03 Twp-22 Rng-21

SHIZUKO CENTLIVRE 1-00200940 615.71 S25, T20, R19, BEG 188'W & 977.5' S OF NE" SEC COR, W183', N200', E183', S200' TO POB Sec-25 Twp-20 Rng-19

SHIZUKO CENTLIVRE 1-03501380 Acres-5.30 61.90 BEG 891' W SW COR E2 SE4, N323.8", W840', S323.8", E840' TO POB EX RD Sec-20 Twp-20 Rng-20

BRUCELEE & JENNIFER C CHAMBERS 1-00701390 14.60 SUPPLEMENT TO MERRILLS ADD, S36, T21", R17, BLOCK 17, Lot Block Info 22, 23, & 24 SECTION 36 TOWNSHIP 21 RANGE 17 Subd-SUPPLEMENT TO MERRILL ADD Blk-17 Lot-22, 23, & 24" Sec-36 Twp-21 Rng-17

GARY & CONNIE CHANDLER 1-00203520 Acres-1.20 3264.30 THOMAS ADD TO GARNETT, S25, T20, R19" ACRES 1.2, Lot Block Info 2 & W100'LT 1" SECTION 25 TOWNSHIP 20 RANGE 19 Subd-THOMAS ADD TO GARNETT Lot-2 & W100'LT 1 Sec-25 Twp-20 Rng-19

GARY & CONNIE CHANDLER 1-03001510 Acres-5.50 38.04 THOMAS ADD TO GARNETT, S25, T20, R19" ACRES 5.5, BEG SW COR LT 2, E340' S670" TO RR, SW115' W250' N707.5' TO POB" SECTION 25 TOWNSHIP 20 RANGE 19 Subd-THOMAS ADD TO GARNETT Sec-25 Twp-20 Rng-19

ESTHER CHAVEZ 1-00101600 56.64 % CHRISTINA DUNLAP COLONY, S06, T23, R19, BLOCK 53, BEG SW" COR LT 12, TH NE46' TO PT 4' S OF NW COR" LT 11, SE PARA TO N LN LT 11 123' SW PARA" TO PINE ST 21' SW TO PT 30' NW OF SE COR Subd-COLONY Blk-53 Sec-06 Twp-23 Rng-19

MICHELLE E CHUDZIK 1-00209810 578.98 GARNETT BLOCK 36 Lot Block Info 9 & W2 LT 8 SECTION 30 TOWNSHIP 20 RANGE 20 Subd-GARNETT Blk-36 Lot-9 & W2 LT 8 Sec-30 Twp-20 Rng-20

MICHELLE E CHUDZIK 1-00216160 849.18 RONALD K MCCAIN J" JEREMY & ASHLEY MCCARTY Subd-CHAPMANS ADD TO GARNETT Blk- 15 Lot-12 & E34'LT 1 Sec-30 Twp-20 Rng-20

TIMOTHY J SR & TAMARA J CLARK 1-00218790 51.68 MANDOI ADD TO GARNETT, S31, T20, R20" BLOCK 11, LTS 16-20 & S2 VAC ALY ADJ ON" N SECTION 31 TOWNSHIP 20 RANGE 20" Subd-MANDOI ADD TO GARNETT Blk-11 Sec-31 Twp-20 Rng-20

TIMOTHY J & TABITHA M CLARK 1-03000950A Acres-9.40 299.96 BEG 30'W NE COR SW4, S560', W652' N688" TO CTR HWY, SELY 680' TO POB Sec-23 Twp-20 Rng-19

MICHAEL W COBBS 1-04600460 Acres-.90 6.82 BUSH CITY, S19, T21, R21, BLOCK 6, LTS 7" THRU 12 & ABAN RR ADJ TO LT 7 SECTION 19 TOWNSHIP 21 RANGE 21 Subd-BUSH CITY Blk-6 Sec-19 Twp-21 Rng-21

MICHAEL W COBBS 1-04600480 Acres-.80 5.46 BUSH CITY, S19, T21, R21, BLOCK 7, LTS 1" , 2, 3 & ABAN RR ADJ SECTION 19 TOWNSHIP 21 RANGE 21" Subd-BUSH CITY Blk-7 Sec-19 Twp-21 Rng-21

MICHAEL W COBBS 1-04600490 Acres-.50 3.64 BUSH CITY, S19, T21, R21, BLOCK 7, Lot 6" SECTION 19 TOWNSHIP 21 RANGE 21 Subd-BUSH CITY Blk-7 Lot-6" Sec-19 Twp-21 Rng-21

MICHAEL W COBBS 1-04600500 Acres-.30 2.27 BUSH CITY, S19, T21, R21, BLOCK 7, Lot 4" & 5, SECTION 19 TOWNSHIP 21 RANGE 21" Subd-BUSH CITY Blk-7 Lot-4 & 5 Sec-19 Twp-21 Rng-21

MICHAEL W COBBS 1-04600510 Acres

TAXES...

FROM PAGE 6A

Lot-7 & 8 Sec-35 Twp-21 Rng-19
Marilyn Gilmore 1-00217810
282.12 % JEFF COLLINS GARNETT, S30, T20, R20, BLOCK 63, Lot" Block Info 7.8 & E2 LT 9 SECTION 30 TOWNSHIP 20 RANGE 20 "

Blk-59 Lot-17 & 18 Sec-30 Twp-20 Rng-20
LOIS D HISER 1-04000100 Acres-7.50
113.50 % LOIS D PEARCE S03, T20, R21, ACRES 7.5, BEG SE COR SE4 "

Lot Block Info 13 & "W2 LT 14 SECTION 30 TOWNSHIP 20 RANGE 20 Subd-GARNETT Blk-39 Lot-13 & W2 LT 14 Sec-30 Twp-20 Rng-20
CLARA MAE KENTCH 1-00101450
322.98 % CLARA MAE HARTMAN COLONY BLOCK 50 Lot 2 SECTION 06 "

KEVIN S MATNEY 1-00219040 230.02
ANDREA M DRIMMEL MANDVOI ADD TO GARNETT, S31, T20, R20," BLOCK 19, Lot 11 - 15 INCL SECTION 31 TOWNSHIP 20 RANGE 20 "

TRUST 1-12000430 Acres-155.40 449.78 % BENNETT GRAIN FARMS S29, T22, R21, ACRES 155.4, NE4 EX RD" Sec-29 Twp-22 Rng-21
LINDA L MOODY TRUSTEE 1-12000631 Acres-152.30 404.71 % BENNETT GRAIN FARMS, INC NE4,EX COM NE COR NE4,W1322.5" & S 40 DEG W52.6 "

199.42 K-BIRD INC % LUIS A LOPEZ S19, T22, R21, ACRES 95.7, BEG SW COR" SW4,N1653.7,E2537,"S1653.5,W2544.3" TO POB EX RD" Sec-19 Twp-22 Rng-21
EDDIE JERRY LEE & TINA MARIE RADFORD 1-00101280 246.28 COLONY BLOCK 47 LTS 1,2 & E12.5"LT 3" SECTION 06 TOWNSHIP 23 RANGE 19 Subd-COLONY Blk-47 Sec-06 Twp-23 Rng-19
LARRY & DONNA RANDOLPH 1-10500780 Acres-1.00 182.62 S33, T22, R20 ACRES 1, BEG 1650'S NE" COR E2 SW4,S230 W180,N230,E180" TO POB" Sec-33 Twp-22 Rng-20
RICHARD J & KAREN S REED 1-02601360 Acres-158.00 3137.56 S12, T20, R17, ACRES 158, SE4 EX RD Sec-12 Twp-20 Rng-17"
AMY DALE REICHAARD 1-00211800 1440.12 CATHRYN A MALONEY % ASHLEY FARIES GARNETT BLOCK 15 Lot Block Info" N70'LT5 13,14 SECTION 30 TOWNSHIP 20 RANGE 20 " Subd-GARNETT Blk-15 Lot-N70'LT5 13,14 Sec-30 Twp-20 Rng-20"
KAREN S REVEY 1-00217860 87.54 GARNETT,S30,T20,BLOCK 63, LTS 19,20 & W5'LT 21 SECTION 30 TOWNSHIP 20 RANGE 20 " Subd-GARNETT Blk-63 Sec-30 Twp-20 Rng-20"
JEFFREY & SHASTA REYNOLDS 1-04100410 Acres-39.60 903.22 S04, T20, R21, ACRES 39.6, BEG NW COR" SW4 E 780',S" TO CTR OF CO RD,SWLY ALG CO" RD" TO SW COR SEC,N TO POB EX RD Sec-04 Twp-20 Rng-21"
BRENT S & MELISSA K RHEA 1-00100690 65.78 TOWNSHIP BLOCK 31 Lot Block Info 7.8 & "W45'LT 8 SECTION 06 TOWNSHIP 23 RANGE 19 Subd-COLONY Blk-31 Lot-7 & W45'LT 8 Sec-06 Twp-23 Rng-19
DANNY W RHODES 1-06100320 Acres-40.00 14.90 S07, T21, R18, ACRES 4, BEG 544.5'W NE" COR NW4 W910"TO CRK, ELY ALG CRK TO POB Sec-07 Twp-21 Rng-18"
LARRY RHODES SR 1-00500090 Acres-27.00 84.98 DEBRA HARRIS ALL BLOCK 23 & 52 ADJN VAC 6TH STEE ADJN" VAC GRACE ST & VAC ALY LGV IN BLK 23 Subd-KINCAID Blk-23 Sec-36 Twp-22 Rng-20
WANDA SUE RIEDHART 1-00502010 887.96 SOUTH ADD TO KINCAID, S01, T23, R20, BLOCK 16, Lot 9, 10 & 11" Subd-SOUTH ADD TO KINCAID Blk-16 Lot-9, 10 & 11" Sec-01 Twp-23 Rng-20
ROBERT T & SHERRY M RIGGS 1-02605400 32.34 DORIS C DROMER HARRIS, S08, T20, R18, BLOCK 18, Lot 12" - 18 INCL SECTION 08 TOWNSHIP 20 RANGE 18" Subd-HARRIS Blk-18 Lot-12 Sec-08 Twp-20 Rng-18
MAUDIE L RILEY 1-00701510 Acres-1.20 30.78 Subd-SUPPLEMENT TO MERRILL ADD Blk-20 Lot-13 TO 26 INCL Sec-36 Twp-21 Rng-17
JOHANNA M RIOS 1-00208310 1546.36 GARNETT BLOCK 18 Lot 13 & 14 " " SECTION 30 TOWNSHIP 20 RANGE 20 Subd-GARNETT Blk-18 Lot-13 & 14 Sec-30 Twp-20 Rng-20
JEFFREY SCOTT & LISA L ROBERTS 1-03001723 Acres-3.50 1464.58 MICHAEL JON ROBERTS S35, T20, R19, ACRES 3.5, BEG SE COR E2" NE4, N89 DEG W563',N270',S89 DEG E563'," S270" TO POB, EX E40' & S20' FOR CO R/W Sec-35 Twp-20 Rng-19
ROGER D & CYNTHIA A ROBERTS 1-00208430 230.02 GARNETT BLOCK 17 Lot Block Info N2" LTS 11,12 SECTION 30 TOWNSHIP 20 RANGE 20 " Subd-GARNETT Blk-17 Lot-N2 LTS 11,12 Sec-30 Twp-20 Rng-20"
WILLIAM A ROBERTS 1-00216250 106.98 CHAPMANS ADD TO GARNETT BLOCK 13 LTS" 12 & 13 & VAC ALY BET LTS 12 & 13 SECTION 30 TOWNSHIP 20 RANGE 20 Subd-CHAPMANS ADD TO GARNETT Blk-13 Sec-30 Twp-20 Rng-20
ROBERT E & DONNA L ROSS 1-00216480 533.48 CHAPMANS ADD TO GARNETT BLOCK 18 LTS" 16 & 17,W18'LT 18 & E2 VAC ALY BET LTS" 15 & 16 SECTION 30 TOWNSHIP 20 RANGE 20 Subd-CHAPMANS ADD TO GARNETT Blk-18 Sec-30 Twp-20 Rng-20
JOHN T & PATRICIA L RUNDLE 1-00214190 115.64 GARNETT BLOCK 67 Lot Block Info S60'LT5 1 & 2 SECTION 30 TOWNSHIP 20 RANGE 20 Subd-GARNETT Blk-67 Lot-S60'LT5 1 & 2 Sec-30 Twp-20 Rng-20
RICKY D SALLIE 1-00209200 11.28 MARY M LONGERT GARNETT BLOCK 21 Lot E2 LT 16 " " SECTION 30 TOWNSHIP 20 RANGE 20 Subd-GARNETT Blk-21 Lot-E2 LT 16 Sec-30 Twp-20 Rng-20
ANDREW F & AMANDA D SAWYER 1-00208570 1353.06 GARNETT BLOCK 16 Lot 12 & W2 11 " " SECTION 30 TOWNSHIP 20 RANGE 20 Subd-GARNETT Blk-16 Lot-12 & W2 11 Sec-30 Twp-20 Rng-20
ROGER & ROBERTA SCHECKEL 1-00209350 758.18 GARNETT BLOCK 39 Lot Block Info 9'10" 11 & 12 SECTION 30 TOWNSHIP 20 RANGE 20 " Subd-GARNETT Blk-39 Lot-9,10,11 & 12 Sec-30 Twp-20 Rng-20
MERLIN E & MARSHA L SCHMOE 1-04000890 Acres-40.10 98.34 S34, T20, R21, ACRES 40.1, NE4 NE4 EX RD Sec-34 Twp-20 Rng-21"
C D SCHULTE 1-00204620 22.56 S19, T20, R20, GOLF CART SHED #23 SEC 19 Twp-20 Rng-20"
C D SCHULTE 1-00204900 28.20 S19, T20, R20, GOLF CART SHED #47 SEC 19 Twp-20 Rng-20"
SCOTT D SCHULTE 1-00207160 2700.06 C D & JANE SCHULTE PARKVIEW ADD TO GARNETT BLOCK 6 LTS" 9,10 & W10'LT 8 SECTION 30 TOWNSHIP 20 RANGE 20 " Subd-PARKVIEW ADD TO GARNETT Blk-6 Sec-30 Twp-20 Rng-20
JOHN L & PEGGY A SCHUSTER 1-00202500 2449.16 % CEDAR CREEK OUTFITTERS NEW ORCHARD PARK ADD S25, T20, R19, BEG" 50'W & 60'N SE COR NE4, N37.9'W, W100" " N110',W75',S150' E175' TO POB EX RD" SECTION 25 TOWNSHIP 20 RANGE 19 Subd-NEW ORCHARD PARK ADD Sec-25 Twp-20 Rng-19
JOHN L & PEGGY SCHUSTER 1-00202890 Acres-3.90 3917.68 S20, R19, ACRES 3.9, BEG 990'E & 40'S NWV COR SE4, S153',E80',S467',E264" " N438.9'W104' "N214.2',W17.5',N71.2' W TO POB" Sec-25 Twp-20 Rng-19
PAUL A & BARBARA KATIE SCOBEE 1-0020110 1093.26 NEW ORCHARD PARK ADD, S25, T20, R19, BEG" 1126'N & 152'W OF SE COR NE4, W199" "N225',E199',S225" TO POB SECTION 25 TOWNSHIP 20 RANGE 19 " Subd-NEW ORCHARD PARK ADD Sec-25 Twp-20 Rng-19
TIMOTHY L & DONNA J SCOTT 1-08101020 Acres-158.40 117.46 S28, T21, R19, ACRES 158.4, NW4 EX BEG" 654'W SE COR NW4 W209',N209',E209' S TO POB EX RD" Sec-28 Twp-21 Rng-19
NORMAN LEE SHAFFER 1-00207130 1558.76 PARKVIEW ADD TO GARNETT W15' LT 2"ALL" LT 3,E20' LT4 BLK 6" SECTION 30 TOWNSHIP 20 RANGE 20 " Subd-PARKVIEW ADD TO GARNETT Blk-6 Sec-30 Twp-20 Rng-20
STEPHEN M & JOYCE SUE SIPLE 1-00501790 385.27 SOUTH ADD TO KINCAID, S01, T23, R20," BLOCK 6, LTS 7 THRU 10 INCL Subd-SOUTH ADD TO KINCAID Blk-6 Sec-01 Twp-23 Rng-20
DANIEL & RACHEL SKAGGS 1-00500690 406.70 KINCAID, S36, T22, R20, BLOCK 12, Lot 9, 10 & 10" Subd-KINCAID Blk-12 Lot-9, 10 & 10" Sec-36 Twp-22 Rng-20
ALFRED SMITH 1-00500840 66.08

TAXES...

FROM PAGE 7A

MARY SWEPSTON KINCAID, S36, T22, R20, BLOCK 26, Lot 3 & 4" Subd-KINCAID Blk-26 Lot-3 & 4 Sec-36 Twp-22 Rng-20
LEO V SMITH 1-00700670 156.94 HIGHBERGERS ADD TO WESTPHALIA, S36, T21," R17, BLOCK 5, SECTION 36 TOWNSHIP 21 RANGE 17" Subd-HIGHBERGERS ADD TO WESTPHALIA Blk-5 Sec-36 Twp-21 Rng-17
LEO V SMITH 1-00700680 2.14 HIGHBERGERS ADD TO WESTPHALIA, S36, T21," R17, BLOCK 8, SECTION 36 TOWNSHIP 21 RANGE 17" Subd-HIGHBERGERS ADD TO WESTPHALIA Blk-8 Sec-36 Twp-21 Rng-17
PHILIP W SMITH 1-10400270 Acres-80.40 1342.94 S16, T23, R20, ACRES 80.4, W2 NE4 EX RD Sec-16 Twp-23 Rng-20
THOMAS A & REGAN S SMITH 1-08002170 209.09 WELDA, S02, T22, R19, BLOCK 7, Lot 10, 11" & 12, SECTION 02 TOWNSHIP 22 RANGE 19" Subd-WELDA Blk-7 Lot-10, 11 & 12 Sec-02 Twp-22 Rng-19
DONNA L SNAVELY 1-00208030 561.68 GARNETT BLOCK 20 N90°LT 1 & E8.94°OF" N90°LT 2 SECTION 30 TOWNSHIP 20 RANGE 20 Subd-GARNETT Blk-20 Sec-30 Twp-20 Rng-20
FRANK D SOBBA 1-02100030 Acres-38.10 1809.18 S19, T19, R20, ACRES 38.1, NW4 W OF RR" EX BEG 58°E SW COR NW4,E780°,N206°,W781" .S206° TO POB & EX COM SW COR NW4 N1157.6° E TO E R/W LN HWY 59" Sec-19 Twp-19 Rng-20
MICHAEL R SOMMER 1-00300900 734.31 S75°LTS 1-4 INCL & E2 VAC ALY BETWEEN LOTS 4 & 5 Subd-GREELEY Sec-30 Twp-19 Rng-21
MICHAEL R SOMMER 1-00300900 12.40 S75° LTS 1 THRU 4, LTS 5 & 6 LYG S OF" RR R/W, & S 75° OF VAC ALY Subd-GREELEY" Sec-30 Twp-19 Rng-21
CLIFFORD C SPARKS SR REVOCABLE TRUST 1-02600310A Acres 2215.70 % BRET A & JENNIFER C POPE S28, T19, R18, ACRES 10 BEG 330°E NW COR" NW4, S330°, E1320°, N330°, W1320° TO POB EX RD" Sec-28 Twp-19 Rng-18
REBECCA STANLEY 1-00210200 708.54 BRYSON ADD TO GARNETT BLOCK 4 BEG" 114°S NW COR LT 1 TH E90° S34°,W90° N34° TO POB SECTION 30 TOWNSHIP 20 RANGE 20 Subd-BRYSON ADD TO GARNETT Blk-4 Sec-30 Twp-20 Rng-20
MARY C STEPHENS 1-00215900 1552.00 CHAPMANS ADD TO GARNETT BLOCK 7 LT 8" & E2 VAC ALY BET LTS 8,9 SECTION 30 TOWNSHIP 20 RANGE 20" Subd-CHAPMANS ADD TO GARNETT Blk-7 Sec-30 Twp-20 Rng-20
WYATT & JANET STEVENS 1-00700910 436.90 SUPPLEMENT TO MERRILLS ADD, S36, T21," R17, BLOCK 5, Lot W67° LTS 7 -12," SECTION 36 TOWNSHIP 21 RANGE 17 Subd-SUPPLEMENT TO MERRILL ADD Blk-5 Lot-W67° LTS 7 Sec-36 Twp-21 Rng-17

Notice: The following listing was published in error by the Anderson County Treasurer's Office. The property tax for Betty Still was paid June 26, 2012, before the publication deadline.

BETTY L STILL 1-00200890 494.91 S25, T20, R19, BEG 1120°N & 712°W OF SE" COR NE4, W105°, N200°, E105°, S200° TO POB Sec-25 Twp-20 Rng-19"

RANDALL S & VICKI L STINNETT 1-12000840A Acres-9.80 575.54 S06, T23, R21, ACRES 9.8, N660°W2 NW4, EX PT LY N & W OF RD" Sec-06 Twp-23 Rng-21

JOAN E STONEKING 1-00500350 137.74 KINCAID, S36, T22, R20, BLOCK 32, Lot 1 & 2" Subd-KINCAID Blk-32 Lot-1 & 2 Sec-36 Twp-22 Rng-20

JOAN E STONEKING 1-00500370 1150.20 KINCAID, S36, T22, R20, LTS 1 THRU 6 BLK" 31, LTS 3 THRU 6 BLK 32, TOG W/ADJ VAC" THIRD AVE & ADJ N1/2 VAC SECOND AVE. Subd-KINCAID Sec-36 Twp-22 Rng-20

ALAN W SUNDERLAND 1-00301280 813.08 % GARY R & CARRIE S SHEPARD GREELEY, S30, T19, R21, BLOCK 62," N50°LTS 1-3 & N50° OF E19°LT 4 SECTION 30 TOWNSHIP 19 RANGE 21 Subd-GREELEY Blk-62 Sec-30 Twp-19 Rng-21

ROBERT L SUNDERLAND 1-04000250 Acres-79.70 1529.64 BEVERLY L SUNDERLAND S10, T20, R21, ACRES 79.7, E2 NE4 EX RD;" ALSO COMM SW COR E2 NE4 TH N2640°, E60°TH S2640° W60° TO POB" Sec-10 Twp-20 Rng-21

LINDA L SWANSON 1-00501360 68.22 KINCAID, S36, T22, R20, BLOCK 14, Lot Block Info 16,17 & N5°15" Subd-KINCAID Blk-14 Lot-16,17 & N5°15 Sec-36 Twp-22 Rng-20"

PAUL SWANSON 1-00501370 17.00 KINCAID, S36, T22, R20, BLOCK 14, LTS 13 & 14 & S 20° LT 15" Subd-KINCAID Blk-14 Sec-36 Twp-22 Rng-20

PAUL E & SANDRA L SWANSON 1-00501470 106.22 KINCAID, S36, T22, R20, BLOCK 15, Lot 20, N45°19" Subd-KINCAID Blk-15 Lot-20, N45°19 Sec-36 Twp-22 Rng-20"

SHANNON SWANSON 1-00212620 91.58 GARNETT BLOCK 32 Lot Block Info 9 & 9" W2 LT 8 SECTION 30 TOWNSHIP 20 RANGE 20 Subd-GARNETT Blk-32 Lot-9 & W2 LT 8 Sec-30 Twp-20 Rng-20

T C & G OIL CO 1-10500080 5.08 S26, T22, R19, BLDG Sec-26 Twp-22 Rng-19 JAMES C & M ANNE TARWATER 1-00203740 70.04 BRONSTON HEIGHTS ADD, S25, T20, R19," BLOCK 3, LTS 14 THRU 18 & BEG NE COR LT" 13, S150°, W9.3", N150°, E7.4" TO POB (ALL" MEAS. PER SURVEY) SECTION 25 TOWNSHIP 20 Subd-BRONSTON HEIGHTS Blk-3 Sec-25 Twp-20 Rng-19

EFFIE TATE 1-00501650 21.00 LOT 12 TOG W ADJN E 1/2 VAC BLAKER ST Subd-KINCAID Blk- 29 Lot-12 Sec-36 Twp-22 Rng-20

EFFIE TATE 1-00501700 87.14 KINCAID, S36, T22, R20, BLOCK 29, Lot 5" Subd-KINCAID Blk-29 Lot-5 Sec-36 Twp-22 Rng-20

JERRY TATE JR 1-00209420 864.12 Subd-GARNETT Blk-39 Lot-24 Sec-30 Twp-20 Rng-20

WILLIAM D TETER 1-04100210 Acres-20.80 1540.40 S24 T20 R20 ACRES 20.8 W2 SWV4 NW4" Sec-24 Twp-20 Rng-20

WAYMAN E THOMPSON ETAL 1-00500780 211.18 KINCAID, S36, T22, R20, BLOCK 17, Lot 5 - 8 INCL" Subd-KINCAID Blk-17 Lot-5 Sec-36 Twp-22 Rng-20

NORMA DELIGHT TILTON 1-10400131 Acres-33.00 367.70 S09, T23, R20, ACRES 33, BEG NE COR W2" NE4, W645°, S599° W222°, S713°, E231°, S565" .E661" N1905° TO POB EX RD Sec-09 Twp-23 Rng-20"

BEG 70°N NW COR ROACH" ADD, N100°, E200°, S100°, W200° TO POB Sec-30 Twp-20 Rng-20

CHARLES R TURNER ETAL 1-08000350 1109.88 % ALTA TURNER RAILROAD ADD TO WELDA, S35, T21, R19," BLOCK 12, Lot 1 & 2, SECTION 35 TOWNSHIP 21 RANGE 19" Subd-RAILROAD ADD TO WELDA Blk-12 Lot-1 & 2 Sec-35 Twp-21 Rng-19

LAWRENCE R JR & JANET L TURNER 1-00204730 12.69 S19, T20, R20, GOLF CART SHED #30 Sec-19 Twp-20 Rng-20"

UNKNOWN 1-00701560 8.72 WESTPHALIA (CORRECTED COPY), S36, T21," R17, BEG NW COR LT 4, BLK 11 E 65°, S50" .W20°, N40°, W45°, N10° TO POB SECTION 36 TOWNSHIP 21 RANGE 17" Subd-WESTPHALIA (corrected) Sec-36 Twp-21 Rng-17

UNKNOWN 1-00701570 9.25 S25, T21, R17, BEG 562°W SE COR SWV4," W16°, N142°, E16°, S142° TO POB Sec-25 Twp-21 Rng-17"

USD #365 1-03501150 Acres-25.40 88.60 S19, T20, R20, ACRES 25.4, BEG AT PT" 165°E OF NW COR OF SW4 TH E1470°, SELY" ALG RR R/W W890°, N600°, W TO E HWY R/W N TO POB" Sec-19 Twp-20 Rng-20

USD #365 1-03501150C Acres-10.80 34.74 S19 T20 R20 10.8 ACRE, BEG NW COR LT 7" MAPLEWOOD ADD, N600°, FOL E HWY R/W, E" 765°, S600°, W800° TO POB" GINA VEERKAMP 1-00101380 71.90 DOUG GEARY S06 T23 R19 E42°LT 1, BLK 49, COLONY;" & ALL LT 1, BLK 49, PINEGAR'S ADD Sec-06 Twp-23 Rng-19

JAY S & BARBARA L VELVICK 1-00209750 1874.08 GARNETT BLOCK 37 Lot 23 & 24," SECTION 30 TOWNSHIP 20 RANGE 20 Subd-GARNETT Blk-37 Lot-23 & 24 Sec-30 Twp-20 Rng-20

JAY S VELVICK ETAL 1-00210890 1298.92 CENTENNIAL ADD TO GARNETT Lot 4," SECTION 30 TOWNSHIP 20 RANGE 20 Subd-CENTENNIAL ADD TO GARNETT Lot-4 Sec-30 Twp-20 Rng-20

JAY S & BARBARA L VELVICK 1-00213170 1224.96 GARNETT BLOCK 35 Lot E2 LT 14," SECTION 30 TOWNSHIP 20 RANGE 20 Subd-GARNETT Blk-35 Lot-E2 LT 14 Sec-30 Twp-20 Rng-20

PAUL W & CAROL A VOGELER 1-00217530 92.88 GARNETT, S30, T20, R20, BLOCK 59, Lot 8" & 9, SECTION 30 TOWNSHIP 20 RANGE 20" Subd-GARNETT Blk-59 Lot-8 & 9 Sec-30 Twp-20 Rng-20

TIMOTHY L WAKEFIELD 1-00700890 852.38 W92°LTS 13-17 & ALL LTS 18-24 INCL Subd-SUPPLEMENT TO MERRILL ADD Blk-5 Sec-36 Twp-21 Rng-17

RYAN & CARLA WALTER 1-00201750 479.98 BEG 1504°W & 60°N SE COR NE4, E56°, N140°, W56°, S140° TO POB" Sec-25 Twp-20 Rng-19

RYAN A & CARLA J WALTER 1-00217650 366.21 Subd-GARNETT Blk-61 Lot-9 & W20°LT 10 Sec-30 Twp-20 Rng-20

STEPHEN P & OPAL E WATSON 1-09400320 Acres-135.40 1220.34 S31, T22, R19, ACRES 135.4, NW4 EX HWY R/W & RD" Sec-31 Twp-22 Rng-19

CRYSTAL M WATTS 1-00102320 246.28 PINEGARS 2ND ADD (PLAT 3) BLOCK 7," Lot 7 & 8 SECTION 06 TOWNSHIP 23 RANGE 19" Subd-PINEGAR'S 2ND ADD PLAT 3 Blk-7 Lot-7 & 8 Sec-06 Twp-23 Rng-19

RAYMOND E WATTS 1-00217440 374.86 GARNETT, S30, T20, R20, BLOCK 58, Lot 17" & 18, SECTION 30 TOWNSHIP 20 RANGE 20" Subd-GARNETT Blk-58 Lot-17 & 18 Sec-30 Twp-20 Rng-20

JOHN & VANESSA WEATHERBEE 1-00701470 355.98 SUPPLEMENT TO MERRILLS ADD, S36, T21," R17, BLOCK 18, Lot 13 - 18 INCL, SECTION" 36 TOWNSHIP 21 RANGE 17 Subd-SUPPLEMENT TO MERRILL ADD Blk-18 Lot-13 Sec-36 Twp-21 Rng-17

FRANCIS R & ELLEN WEAVER 1-04600450 13.44 Subd-BUSH CITY Blk-6 Lot-1 TO 6 INCL Sec-19 Twp-21 Rng-21

FRANCIS R & ELLEN WEAVER 1-04600570 8.19 BUSH CITY, S19, T21, R21, BLOCK 9, Lot 1" & 2, & ABAN, RR R/W SECTION 19 TOWNSHIP 21 RANGE 21" Subd-BUSH CITY Blk-9 Lot-1 & 2 Sec-19 Twp-21 Rng-21

MELISSA C WEAVER 1-00500810 198.76 KINCAID, S36, T22, R20, BLOCK 26, Lot 9 & 10" Subd-KINCAID Blk-26 Lot-9 & 10 Sec-36 Twp-22 Rng-20

RICHARD E WEBBER 1-00101760 625.00 HEATHER L BEAMAN COLONY BLOCK 63 Lot Block Info 4,5,6" EX S96° SECTION 06 TOWNSHIP 23 RANGE 19" Subd-COLONY Blk-63 Lot-4,5,6 EX S96° Sec-06 Twp-23 Rng-19"

RICHARD & HEATHER WEBBER 1-00102590 866.42 COULTERS 1ST ADD TO COLONY BLOCK 2," BEG 60°W OF NW COR BLK 2 S150° W100° N150° E100° TO POB SECTION 07 TOWNSHIP 23 RANGE 19" Subd-COULTERS 1ST ADD TO COLON Blk-2 Sec-07 Twp-23 Rng-19

ROY W & ETHEL LOLA WEBBER 1-00102570 97.64 COULTERS 1ST ADD TO COLONY BLOCK 2," Lot 1,2, & 3 SECTION 07 TOWNSHIP 23 RANGE 19" Subd-COULTERS 1ST ADD TO COLON Blk-2 Lot-1,2, & 3" Sec-07 Twp-23 Rng-19

ROY W & ETHEL LOLA WEBBER 1-00102580 1230.96 COULTERS 1ST ADD TO COLONY BLOCK 2," Lot 4,5, & 6 SECTION 07 TOWNSHIP 23 RANGE 19" Subd-COULTERS 1ST ADD TO COLON Blk-2 Lot-4,5, & 6" Sec-07 Twp-23 Rng-19

STEVE B & TRACY L WEESE 1-03502850 819.86 S29 T20 R20 BEG 100°E NW COR NE4" SW4, E133° S345°, W133°, N345° TO POB EX RD & R/W" Sec-29 Twp-20 Rng-20

GLENN W & ANGELA WELCH 1-00208970 747.64 GARNETT BLOCK 22 Lot Block Info 1 &" E10°LT 2 SECTION 30 TOWNSHIP 20 RANGE 20 Subd-GARNETT Blk- 22 Lot-1 & E10°LT 2 Sec-30 Twp-20 Rng-20

WELLS FARGO BANK NA 1-00211070 1084.96 % OPTION ONE MORTGAGE CORPORATION Subd-GARNETT Blk- 8 Lot-1 & 2 Sec-30 Twp-20 Rng-20

LAWRENCE E WEST 1-07201230 Acres-4.30 7.32 N100° W2 SE4 & N50° E2 SE4 Sec-01 Twp-23 Rng-17

LAWRENCE E WEST 1-07201230C Acres-50 3.85 LOTS 20-25 BLK 1, NORTHCOTT PLAT Sec-01 Twp-23 Rng-17"

LAWRENCE E WEST 1-07201230D 1.93 BEG NW COR LOT 26 BLK 1, S12°, E47°, N12" W47° TO POB NORTHCOTT PLAT Sec-01 Twp-23 Rng-17"

DAVID & CAROLYN WHITCOMB 1-00500710 339.90 KINCAID, S36, T22, R20, BLOCK 12, Lot 5 & 6" Subd-KINCAID Blk-12 Lot-5 & 6 Sec-36 Twp-22 Rng-20

LEE ROY & SUZANNE WHITCOMB

1-12001140 Acres-237.50 453.10 S15, T23, R21, ACRES 237.5, NE4 & N2 SE4 EX RD" Sec-15 Twp-23 Rng-21

ROY W & HONEY L WHITCOMB 1-00500620 15.20 Subd-KINCAID Blk- 3 Lot-12 Sec-36 Twp-22 Rng-20

ROY W & HONEY L WHITCOMB 1-12001430 Acres-3.80 508.44 S11, T23, R20, ACRES 4, BEG SE COR W2" NE4, N429°, W374° S460°, N30° TO POB Sec-11 Twp-23 Rng-20

STACEY L WHITCOMB 1-00212920 286.20 GARNETT BLOCK 34 Lot 7 SECTION 30 TOWNSHIP 20 RANGE 20" Subd-GARNETT Blk-34 Lot-7 Sec-30 Twp-20 Rng-20

RICHARD L WHITE 1-03102100B Acres-80.00 388.46 S28, T20, R19, ACRES 80, W2 NE4, EX RD Sec-28 Twp-20 Rng-19

JAMES STEVEN WHITESSELL 1-00218000 241.46 MARITA C WHITESSELL GARNETT, S30, T20, R20, BLOCK 64, S84°LT" 1 & S84°E 27°LT 2 SECTION 30 TOWNSHIP 20 RANGE 20 Subd-GARNETT Blk-64 Sec-30 Twp-20 Rng-20

DONALD L WICKHAM 1-00216490 884.52 CHAPMANS ADD TO GARNETT BLOCK 18 LTS" 19,20, E26°LT 18 & VAC ALY BET LTS 18 &" 19 SECTION 30 TOWNSHIP 20 RANGE 20 Subd-CHAPMANS ADD TO GARNETT Blk-18 Sec-30 Twp-20 Rng-20

NATHAN WIEHL & NICOLE BRUMMEL 1-00201087A Acres-1.80 156.62 PRAIRIE LINKS SUBDIVISION, BLOCK 01," ACRES 1.8, LT 8, ALG W/ORIG E1/2 VAC PRAIRIE LN" Subd-PRAIRIE LINKS Blk-1 Sec-19 Twp-20 Rng-20

GERRY L WIGHT 1-00207650 1359.46 LT 4 & E2 LT 5 Subd-GARNETT Blk- 4 Lot-4 & E2 5 Sec-30 Twp-20 Rng-20

GERRY L WIGHT 1-00214750 279.22 GARNETT BLOCK 66 LT 16 & N100°LT 17" SECTION 30 TOWNSHIP 20 RANGE 20 Subd-GARNETT Blk-66 Sec-30 Twp-20 Rng-20

JAMES L & MARY L WILLIAMS 1-00501180 606.72 KINCAID, S36, T22, R20, BLOCK 13, Lot Block Info 3 & N40°LT 4" Subd-KINCAID Blk-13 Lot-3 & N40°LT 4 Sec-36 Twp-22 Rng-20

MARILEE WILLIAMS 1-00206390 1722.72 KATHERINE A WILLIAMS EASTGATE ADD TO GARNETT BLOCK 2 Lot" 5 SECTION 29 TOWNSHIP 20 RANGE 20" Subd-EASTGATE ADD TO GARNETT Blk-2 Lot-5 Sec-29 Twp-20 Rng-20

CLAUDIA D WILLIAMSON & DAVID W GREEN 1-00301120 1399.54 GREELEY, S30, T19, R21, BLOCK 40, Lot 7;" SECTION 30 TOWNSHIP 19 RANGE 21 Subd-GREELEY Blk- 40 Lot-7 Sec-30 Twp-19 Rng-21

TONY BWILSON 1-00211920 780.84 GARNETT BLOCK 26 Lot Block Info 13 &" W2 LT 14 SECTION 30 TOWNSHIP 20 RANGE 20 Subd-GARNETT Blk-26 Lot-13 & W2 LT 14 Sec-30 Twp-20 Rng-20

WOLKEN GOODYEAR 1-00214760 533.51 % JOHN RUNDLE GARNETT BLOCK 67 LT 3, N80°LT 1 & 2" E2 LT 4 SECTION 30 TOWNSHIP 20 RANGE 20 Subd-GARNETT Blk-67 Sec-30 Twp-20 Rng-20

DEBRA KWOMELSDORF 1-10501090 Acres-2.90 146.62 S32, T22, R20, ACRES 2.9, BEG SW COR SE4" N186°, E693° S186°, W693° TO POB EX RD Sec-32 Twp-22 Rng-20"

JUSTIN D & ALICIA M WOODS 1-00500160 341.52 KINCAID, S36, T22, R20, BLOCK 6, LTS 1" THRU 12, TOG W/VACALY & ADJ S1/2 VAC" SIXTH AVE SECTION 36 TOWNSHIP 22 RANGE 20 Subd-KINCAID Blk- 6 Sec-36 Twp-22 Rng-20

WOODY DEVELOPMENT & REALTY LLC 1-00212420 822.69 GARNETT BLOCK 30 Lot 6 & N90° 7;" SECTION 30 TOWNSHIP 20 RANGE 20 Subd-GARNETT Blk-30 Lot-6 & N90° 7 Sec-30 Twp-20 Rng-20

WOODY DEVELOPMENT & REALTY LLC 1-00215080 125.51 GARNETT BLOCK 68 S2 LTS 1 & 2" & E18°S2 LT 3 SECTION 20 TOWNSHIP 20 RANGE 20 Subd-GARNETT Blk-68 Sec-20 Twp-20 Rng-20

WOODY DEVELOPMENT & REALTY LLC 1-00215400 213.81 GARNETT BLOCK 72 Lot Block Info 5 &" W2 LT 4 SECTION 30 TOWNSHIP 20 RANGE 20 Subd-GARNETT Blk-72 Lot-5 & W2 LT 4 Sec-30 Twp-20 Rng-20

WARD W WOOLS 1-12001580 Acres-2.10 51.96 S13, T23, R20, ACRES 2.1, BEG SW COR NE4" SE4 N198°, E550 S198°, W TO POB EX RD Sec-13 Twp-23 Rng-20

J C & AMANDA LOUISE WRAY 1-00216310 609.16 LTS 1,4,5,8,9,12 & N2 VAC ST" Subd-CHAPMANS ADD TO GARNETT Blk-11 Sec-30 Twp-20 Rng-20

JOHN ALLEN & EMMA F YODER 1-05000350 Acres-79.40 846.59 W2 NE4 EX RD Sec-08 Twp-21 Rng-19

JOHN A & EMMA F YODER 1-06000060 Acres-54.00 127.00 N 1/2 OF 108.3 AC OF S SIDE OF NE FR4 Sec-01 Twp-21 Rng-18

LESTER P YODER JR 1-00206270 1138.72 Subd-E S NICHOLS SUBDIVISION Blk-1 Lot-2 Sec-29 Twp-20 Rng-20

LESTER PAUL YODER JR 1-02700441 Acres-17.30 28.84 BEG SE COR OF SEC, N1329;" W TO CTR OF" CK, SLY ALY CTR OF CK TO PT 640° W OF E" LI SE4, TH S & PW E LI OF SE4, TH S & PW E LI" Sec-14 Twp-20 Rng-18

LESTER P YODER JR 1-03000800 Acres-1.80 49.48 BEG N GATE POST 489°W & 982°N SE COR S2 NE4, TH NWLY 424.7° ALG W R/W CO RD" E410°, SWLY ALG US HWY 59 318' TH W286° Sec-13 Twp-20 Rng-19"

LESTER P YODER 1-00219170 106.36 LT 8 W OF RR & ALL LTS 9 & 10 & VAC ST Subd-MANDOWI ADD TO GARNETT Blk-26 Lot-P8 ALL 9 & 10 Sec-31 Twp-20 Rng-20

MELVIN RAY & BECKY YODER 1-05000610 Acres-2.00 13.11 LOTS 1-19 & VAC ST & ALYS BLK 4 Subd-MONT IDA Blk- 4 Lot-LTS 1-19 Sec-18 Twp-21 Rng-19

MELVIN RAY & BECKY YODER 1-05000720 37.66 Subd-MONT IDA Blk- 17 Lot-LTS 5-8 Sec-18 Twp-21 Rng-19

JOHN J & JESSICA M ZILLNER 1-00216580A 185.34 LOTS 1 & 2 & VAC ALY Subd-CHAPMANS ADD TO GARNETT Blk-25 Lot-LOTS 1 & 2 Sec-30 Twp-20 Rng-20

IST COLONY LLC 1-07200671 Acres-3.00 356.50 % SHARON K SATERFIELD S04 T23 R18 ACRES 3.0 BEG ON W" LN SW4 1560°N SW COR SW4, N436°, N87 DEG" E340°, S436°, S87 DEG W340° TO POB EX RD Sec-04 Twp-23 Rng-18"

138 EAST 5TH INC 1-00214470 74.84 GARNETT BLOCK 55 BEG 3.5°E NW COR LT" 2 TH S100° W0.7°, S40°, W18°, N140°, E18 .7" TO POB SECTION 30 TOWNSHIP 20 RANGE 20 Subd-GARNETT Blk-55 Sec-30 Twp-20 Rng-20

Grand Total 334061.23 ag73

Control weeds in wheat stubble

MANHATTAN – Some areas in Kansas have received just enough rainfall to have large broadleaf and grassy weeds actively growing in harvested wheat stubble, said Curtis Thompson, K-State Research and Extension weed management specialist. This should be a red flag to producers. "These weeds are utilizing moisture and nutrients that would be available for a subsequent crop. It is a good idea to control these weeds before they set seed," Thompson said. Koch

COMMUNITY

CALENDAR

Tuesday, August 14

- Noon - Rotary International Club at Garnett Inn and Suites
- 6 p.m. - City of Garnett at City Hall
- 6 p.m. - Alzheimer's Support at Golden Heights
- 7 p.m. - Legion Bingo at VFW

Wednesday, August 15

- 6 p.m. - Anderson County CloverPatch Kids Club for all 5 and 6 year olds, Community Building
- 7 p.m. - Garnett Duplicate Bridge at the Garnett Inn
- 7 p.m. - Garnett Saddle Club at the Garnett Riding Arena
- 7 p.m. - Colony Lions Club at Colony Methodist Church
- 7 p.m. - Kincaid Lions Club at Kincaid-Selma United Methodist Church

Thursday, August 16

- 8:45 a.m. - TOPS #247 at the Garnett Town Hall Center
- 12:30 p.m. to 1:30 p.m. - Line dancing at Garnett Senior Center
- 5:30 p.m. - 13 Point Pitch and Carry In Supper at the Garnett Senior Center; pitch at 6 p.m.
- 7:30 p.m. - Delphian Masonic Lodge No. 44

Friday, August 17

- First day of school, USD 365 & 479

Monday, August 20

- 9 a.m. - Anderson County Commission at the Anderson County Annex
- 9 a.m.-2:30 p.m. - Friendship Quilters at the Kincaid-Selma United Methodist Church
- 6:30 p.m. - Garnett Lions Club at Pizza Hut

Tuesday, August 21

- Noon - Rotary International Club at Garnett Inn and Suites
- 5:30 p.m. - Garnett Business & Professional Women at Town Hall Center
- 7 p.m. - Legion Bingo at VFW

Wednesday, August 22

- 6:30 p.m. - Garnett Optimist Club at Mr. D's Restaurant
- 7 p.m. - Garnett Duplicate Bridge at the Garnett Inn
- 7 p.m. - Garnett Saddle Club at the Garnett Riding Arena
- 8:45 a.m. - TOPS #247 at the Garnett Town Hall Center
- 9:30 a.m. - Pieces & Patches Quilt Guild at the Anderson County Annex
- 12:30 p.m. to 1:30 p.m. - Line dancing at Garnett Senior Center
- 5:30 p.m. - 13 Point Pitch and Carry In Supper at the Garnett Senior Center; pitch at 6 p.m.
- 6:30 p.m. - Anderson County Historical Society at Lone Elm Community Building

Friday, August 24

- 4:30 p.m. - ACHS Red/White games

Monday, August 27

- 9 a.m. - Anderson County Commission at the Anderson County Annex

Tuesday, August 28

- Noon - Rotary International Club at Garnett Inn and Suites
- 6 p.m. - City of Garnett at City Hall
- 7 p.m. - Legion Bingo at VFW

Thursday, August 30

- 9 a.m. to noon - ECKAN Commodity Distribution at ECKAN Center, 132 E. Fifth Ave.

Friday, August 31

- 7 p.m. - GES PTO Back To School Carnival at GES gym

Monday, September 3

- Labor Day - Government offices closed
- 9 a.m. - Anderson County Commission at the Anderson County Annex
- 9 a.m.-2:30 p.m., Friendship Quilters at the Kincaid-Selma United Methodist Church

Tragedy Averted at Demo Derby



THE ANDERSON COUNTY REVIEW 08-14-2012 / Vickie Moss

The driver of a vehicle that was flipped onto its hood managed to escape injury Saturday evening, Aug. 11, at the annual Anderson County Fair Demolition Derby. Although the evening saw a break in recently hot temperatures and a good crowd turned out for the event, entries were fewer than in previous years.

Area deer at risk of fatal disease

Kansas deer, including herds in Anderson County may be at risk of a potentially fatal disease, Josh DeHoux, Natural Resources Officer with the Kansas Department of Wildlife and Parks, reported last week.

Epizootic Hemorrhagic Disease (EHD) in the Kansas deer herd is a potential cause of death for deer in some areas of Kansas. Due to the drought conditions deer are forced to congregate near remaining water in creeks and shallow ponds in many areas. These deer are at an increased risk of exposure to EHD.

EHD is a disease similar in

type to Blue Tongue in cattle. It is spread through the bite of the fly commonly called a Biting Midge or "No see-um". The disease is not spread from animal to animal, only through the bite of this fly. The effects of this disease may range from sudden death to a chronic disease. While many animals die from this, some can withstand the effects of the disease. If a nursing doe is infected and has become immune to the disease she will pass that immunity to her fawn while the fawn is still nursing. Deer deaths have been reported since early July and are expected to continue until the first freeze when

these flies are killed.

Several counties in Southeast Kansas including Anderson County have been reporting deer mortalities which are consistent with this type of disease. Many of these animals have been necropsied and samples sent for testing. DeHoux would like to ask anyone who finds a deer that has died on their property to please contact him as soon as possible at (620) 432-4869. Accurate documentation and testing of suspicious deaths will aid in the highest quality management of the deer herd in Kansas.

Blocker gets national award

Shannon Blocker received the Achievement Award from the National Association of County Agriculture Agents during the 2012 Annual Meeting and Professional Improvement Conference held in Charleston, SC. Shannon Blocker was one of several honorees who represent the top one percent of the membership selected by their peers and the Director of Extension.

Shannon has been an agent in Anderson County since June 2002. Her program responsibilities include agriculture, horticulture, natural resources, economic development and 4-H youth development. Shannon

has presented soil fertility information at producer workshops, initiated the local Extension Master Gardener program and has taught numerous youth programs. Shannon also conducted a local on-farm study for her M.S. thesis looking at the impacts and correction of potassium deficiency in no-till and strip-till soybean and corn production.



Blocker

KFB calls for Farm Bill

MANHATTAN - Calling for farm bill action on the House floor as soon as possible, Kansas Farm Bureau President Steve Baccus is telling Kansas Congressional delegation members to expect farmers and ranchers to show up at town hall meetings this month during the August Congressional recess. The message? We need a farm bill now.

The Kansas delegation is generally supportive of completing a farm bill before the elections, but they need input from Kansans so they can return to Washington, D.C. and have a clear message to the rest of Congress.

"The entire reason that a farm bill has not advanced to the House floor is pure politics. It has nothing to do with farm programs, providing livestock disaster assistance, or protecting producers through enhanced risk management tools," Steve Baccus, KFB president said. "This is not the time for political positioning when the agriculture need is so critical. Each time this bill is extended, it adds another degree of uncertainty about the 2013 crop, so not only farmers, but also their bankers, get nervous."

Baccus also said there is great concern over budget implications if passing a bill is dragged into next year. With debt rising, and the outcome of the elections uncertain, the will to maintain a reasonable program for farmers and ranchers becomes more questionable.

"The Senate has passed a bipartisan bill, as has the House Agriculture Committee. We want to send a message back with our delegation to tell their colleagues it's time for action on the House floor." Baccus said.

Time to Head Back to School



THE ANDERSON COUNTY REVIEW 08-14-2012 / Vickie Moss

Josh DeHoux, far left, talks to Garnett Elementary School principal Krista Hedrick during enrollment for Quintin Thompson, second from left, with Katy Ludwig Tuesday, Aug. 7, at GES. Thompson is an incoming kindergartener at the school. A district-wide enrollment was held at the new Garnett school and included enrollment for GES, Anderson County Junior/Senior High School, Greeley and Westphalia. GES students were given a T-shirt, shown at the bottom of the photo, to match the area of the school where their class is located, and students were asked to wear the shirts Friday and Monday. Classes begin Friday.

IOLA
THE ALL NEW
Sterling Six
CINEMA
At Hwy. 169 & Hwy. 54
For current movies and showtimes
2500
NEWSLINE
(785) 448-2500
(785) 448-2500
Press 4
www.bbtheatres.com

PLAZA
GRILL AND CINEMA
Ottawa
Plaza Grill and Cinema
Located in Downtown Ottawa
Dinner, Bar and Movies
Call for our Dinner and Movie Specials
at (785) 242-5555 or Facebook us
@ The Plaza Grill and Cinema.

Take a walk on the dry side

What does a person do these very hot and dry days? Would you believe I actually took advantage of the drought in two days this past week. What did I do? I decided what better time to conduct walking sight surveys up and down a couple of the dried up or nearly dried up creek beds. What did I look for? Anything and everything that didn't belong in the creek or was exposed on the cut-banks.

My first trek was on Monday, July 30, and was one mile round trip. My finds included two shell fossils, a tennis ball sized light green sandstone like rock with tiny crystals through its surface. I haven't identified it as yet. Another find was a large piece of flint. When I first looked at it, I didn't think it showed any sign of usage. However, after cleaning it and further study, it does show small flaking all along



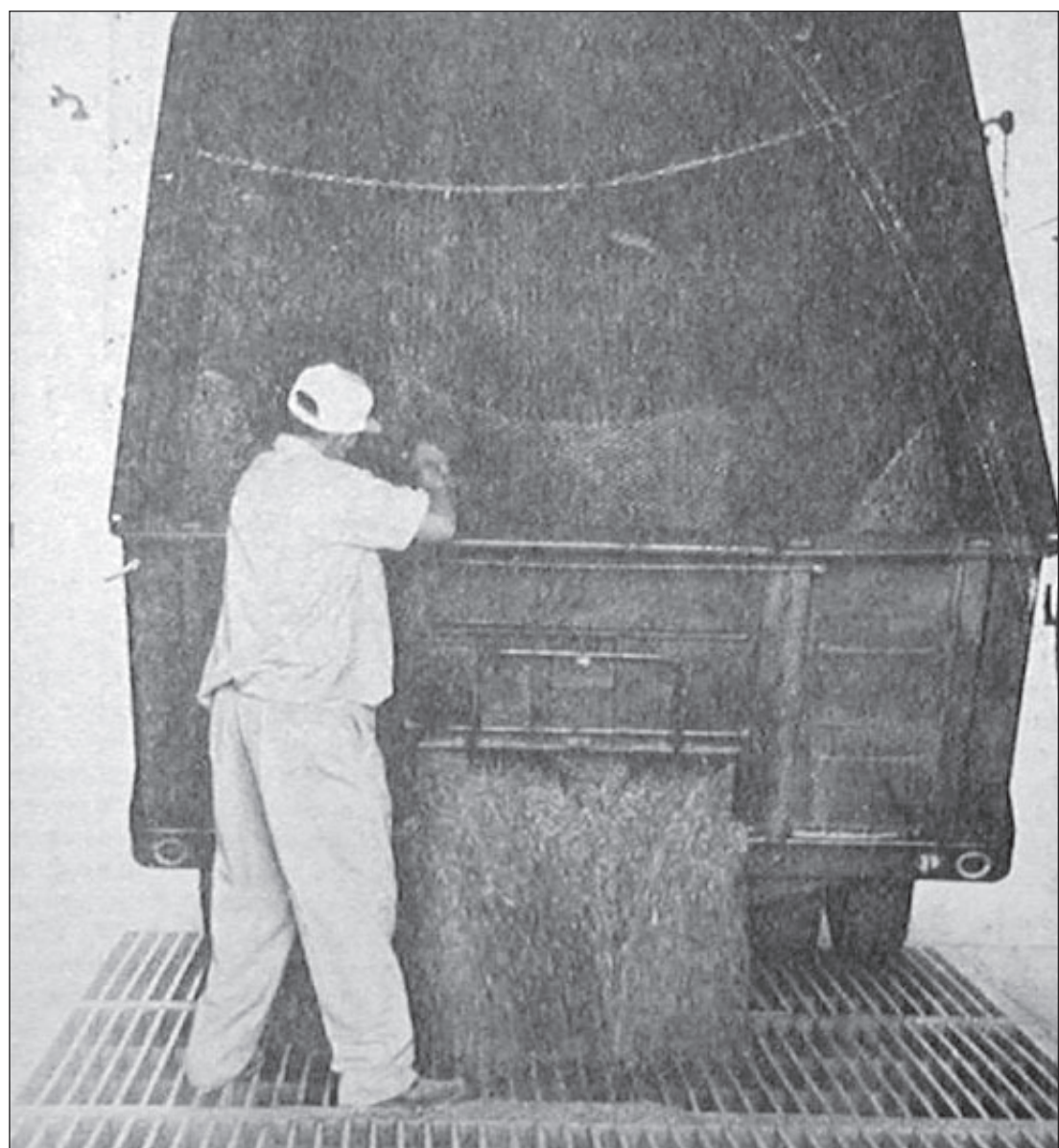
by Henry Roeckers
Contact (785) 448-6244
for local archeology information.

one edge. Therefore it may have been used as a very large hide scraper or knife. Perhaps it is even an unfinished tool. The find of the day was two large lead bullets. The first one was laying at the edge of a small pool of water and the second one was protruding from the embankment at a depth of about 8 to 10 inches from the top. If I would have had my metal detector along I would have searched the

embankment further (would make a good project for another day). After researching I have found the bullets to be rimfire Cold Revolving Rifle. Who, why and what at they were fired is a mystery. Actually they may be "drops" but both show a slight impact on their points or noses.

On Tuesday, July 31, I took advantage of a slightly cooler morning and walked another dry creek bed. This was a much shorter trek of approximately one-half mile round trip. I might say, it wasn't very successful, but it got me out of the house. My finds for this day were a nice slab of shale with several embedded fossils and an old iron cultivator wrench.

Just looking at the long-range weather forecasts, it appears I'll have a lot more hot, rainless days to take a few more creek treks.



THE ANDERSON COUNTY REVIEW 08-14-2012 / File photo

The co-op elevator in Garnett in 1979 was a popular place as farmers began the fall harvest.

2002: Fire claims downtown businesses

Aug. 20, 2002

Fire destroyed two historic downtown buildings in Garnett early Saturday morning, Aug. 17, and threatened the headquarters of a local bank and nearby residences. Lost to the fire was the building on the northeast corner of the town square, which housed Country Village Variety Store, and the building directly to the west where Bennett's Sewing Center operated. Both buildings were lost but Patriots Bank, on the west side of Bennett's, was undamaged and opened Monday.

Threats, vandalism and tension between Kincaid residents and officials have escalated to the point where nearly all city government positions have seen vacancies in the past four months. At least two families of city employees have been targeted by vandalism and harassment in recent months. One family reported slashed vehicle tires and that people have driven past their house yelling threats. Another family reported vehicle tires slashed and eggs thrown at their house.

Aug. 20, 1992

In what many of its organizers are calling one of the best fairs yet for Anderson County, the grand parade kicked activities off in fine style for the 1992 edition of the Anderson County Fair Monday. Organizers estimated the crowd at between 2,500 to 3,000 during the parade, which drew a large



by Vickie Moss
Staff Writer

number of float entries in all categories.

Decreasing interest rates on the City of Garnett's invested funds which will lead to a revenue shortfall of some \$200,000 has forced the municipality to raid cash reserves in its utility fund to meet its 1993 operating budget. The net effect will be a slight tax increase to fund the coming year's expenses, which are about \$87,000 less than last year's.

Aug. 12, 1982

For the second time in a little over three years a lone gunman struck the Peoples State Bank in Richmond and managed to escape. The bandit entered the bank at 9:05 a.m., shortly after it opened for business. His face was covered with a type of hooded mask. With gun visible for all, he ordered everyone to lie on the floor and approached a teller's window, instructing the female teller to fill a paper bag with money. While the robber was busy with the tell-

er, one of the customers was able to slip away and made his way to the Farmers Co-op and reported a robbery was in progress. The robber left the bank, got into his pickup, a white Ford Courier with red decals on the sides, and drove west out of town. The pickup had been reported stolen by the RET Oil Production Company near Bush City.

It took three calls and nearly an hour before the Anderson County Sheriff's Department responded to investigate an accident. The driver lost control sometime in the early morning hours north of Garnett on U.S. 59 and went into the ditch. The car rolled three times and the driver was thrown from the vehicle. He suffered severe back injuries and may be paralyzed. At 5:15 a.m., a passing motorist told a Garnett city policeman of a car in the ditch. A dispatcher was called at 5:17 a.m., and another call was reported at 5:19 a.m. The sheriff was advised of the situation but did not go to the accident or give directions for anyone else to be called. A half hour later, an Ottawa dispatcher called about a personal injury accident and the local dispatcher notified a deputy. The deputy went on duty at 6 a.m. and arrived at the accident at 6:06 a.m. He called for an ambulance, which arrived at 6:24 a.m.

Drought triggers access to more water

On July 25, Governor Sam Brownback updated the Drought Declaration for Kansas with Executive Order 12-10, and placed all Kansas counties in an emergency status. As a result of this action, some state fishing lakes and COE reservoirs are available as an emergency water source for domestic, municipal and livestock uses.

Individuals and communities first must contact the Kansas Water Office (KWO) with their water supply request. They will then be directed to the appropriate Kansas Department of Wildlife Parks and Tourism or COE office to obtain the necessary permit to withdraw the water.

"The Kansas Water Office's focus at this time is to ensure communities, livestock producers and farmers have the available water resources they need to cope with this drought," said Tracy Streeter, Director of the Kansas Water Office and Chair of the Governor's Drought Response Team. "It is imperative producers contact our office first so we can coordinate access to water supply in close

proximity to them."

Streeter emphasized that permission is required before anyone can draw water from the selected lakes. If harmful algal blooms are present in water then access may be denied. The permit limits the types of water use and a fee may be set for use of the state fishing lakes' water supply and federal reservoirs.

"State fishing lakes are not intended to be long-term water supply sources," said Robin Jennison, KDWP Secretary. "While we are happy to help if there is an emergency need for water, we have to remember that these are smaller lakes that are managed primarily for fishing. Our state fishing lakes are also affected by the drought, so we have to be careful to conserve water like other Kansans."

The state continues to encourage farmers and ranchers to keep open dialogue with their local County Emergency Boards as they continue to monitor crop conditions for losses that may have occurred due to drought, severe storms and hail throughout the State.

Below are the State Fishing

Lakes available for withdrawals for emergency status:

Atchison, Barber, Brown, Bourbon, Butler, Chase, Clark, Crawford, Goodman, Jewell, Kingman, Leavenworth, Lyon, Pottawatomie #1, Pottawatomie #2, McPherson, Miami, Mined Lands (Pits), Neosho, Osage, Ottawa, Saline, Scott, Shawnee, Sheridan, Washington, Wilson, Woodson

Below are the federal reservoirs available for withdrawals for emergency status:

Big Hill, Elk City, Council Grove, John Redmond, Marion, Fall River, Toronto, Clinton, Hillsdale, Melvern, Milford, Kanopolis, Perry, Pomona, Wilson, Tuttle Creek

This Executive Order shall remain in effect for those counties so identified as emergency status until rescinded by Executive Order or superseded by a subsequent Executive Order revising the drought stage status of the affected counties.

For more information please visit the Kansas Water Office website, www.kwo.org, or call (785) 296-3185 or (888) 526-9283 (KAN-WATER).

Extension Master Gardener training offered

Are you interested in becoming an Extension Master Gardener?

The Master Gardener program is a volunteer program in which K-State Research and Extension exchanges classroom training for volunteer time. Training consists of 56 hours of instruction in all aspects of horticulture.

Instructors include state specialists from Kansas State University, local extension agents and local experts in specific subject matter. Anderson County has joined Johnson and Miami County's training.

A fee of \$125 per participant is required for course materials payable to the Anderson County Extension Council. Training days are Tuesdays from 9 a.m. to 4 p.m. A total of nine sessions will be held, which will occur on September 11, September 18, September 25, October 2, October 9, October 23, October 30, November 6 and November 13. Trainings will be held at the Johnson County Extension Office and transportation will be provided from Garnett to Olathe, if desired.

After training is completed, volunteers donate 40 hours of educational community service in the community.

Service activities will be coordinated by Shannon Blocker, Anderson County Extension Agent, Agriculture and Natural Resources. Volunteer programs include demonstration gardens, diagnostic clinics, 4-H Youth horticultural services, hotline question and answer sessions, school outreach, speaker's bureaus and special events and educational days.

Application forms are available at the Anderson County Extension Office and online at www.anderson.ksu.edu. Completed applications should be submitted on or prior to the deadline of Wednesday, August 29. Applicants will be selected based on ability to attend all class sessions, commitment to satisfying a minimum of 40 vol-

unteer hours, interest in Master Gardner program involvement, and training space availability.

ANDERSON COUNTY BUSINESS DIRECTORY

Check your local area businesses first - keep your local dollars at home!

DCI Digital CONNECTIONS, Inc.
Authorized Dealer
LANIER
"Service is our Salesman"
MIKE HERMRECK
Sales & Service
DIGITAL COPIERS
COLOR PRINTERS
NETWORK PRINTERS
NETWORK SCANNERS
FACSIMILE
112 E. 11
Coffeyville, KS 67337
Office & Fax (620) 251-1029
digicon@digicon.kscoxmail.com

On-the-Farm Service • Alignments
WOLKEN TIRE
GARNETT, KS
601 South Oak
Garnett, Kansas
(785) 448-3212
Cooper • Jetzon • Kumho

MONT IDA MEATS
Howard Yoder
Owner - Operator
22468 NW Indiana Rd
Welda, KS 66091
(785) 489-2212

Lyle's
CARPETING
SERVICE
448-3720
Carpet - Vinyl
Laminate - Hardwood
Ceramic & VC Tile

AUBURN PHARMACY
429 N. Maple • Next to Country Mart
Reliable, Dependable, Consistent
Always There - Always Caring

BECKMAN MOTORS
North Hwy. 59 in Garnett, KS
Current Rebate \$2000
See dealer for additional rebates.
(785) 448-5441
Genuine Chevrolet

DIA DORNES INSURANCE AGENCY, LLC
Donna Dornes
Sheri Lickeig
Vicki Mersman
Jim Hogan
Princeton Richmond
(785) 937-2269 (785) 835-6161

Valnet (888) 332-1616
We Connect You
INTERNET+
• FREE Dial-Up Accelerator
• FREE UNLIMITED Phone Technical Support
• FREE Local Access
• NO CONTRACT
• NO Taxes Added
• NO Up-Front Fee
• Set-Up in Minutes!
\$19.95
Unlimited Access

Jo Wolken, E.A., A.T.A.
AFLAC CANCER INSURANCE
IRA's*
Mutual Funds*
Investments*
(785) 448-3056
HELPING YOU PLAN TODAY FOR TOMORROW
*Securities offered through H.D. West Investment Services, Member SIPC. Advisory Services offered through H.D. West Advisory Services. Non-bank subsidiaries of Wells Fargo and Company, 6333 North State Highway 161, Fourth Floor, Irving, Texas 75038 • (972) 670-6000.

Aaron Lizer
Agent
Farm Bureau Financial Services
305 N. Maple • PO Box 66 • Garnett, KS 66032
PHONE (785) 448-6125 • CELL (785) 448-4428
FAX (785) 448-5878

GSSB GARNETT STATE SAVINGS BANK
Serving The Community Since 1899
106 East Fifth • N. Hwy. 59
GARNETT, KS 66032 785-448-3111
207 East Broad Street
COLONY, KS 66015 620-852-3512
ATM Inside Short Stop 2nd & Hwy. 59, Garnett and at 207 East Broad Street, Colony

KOFO 1220AM
Country Favorites
Anderson County News
Mon-Fri • 8:00am.

Sukup
Grain Handling Equipment
Ritchie
Since 1921
waters 'em rights
Livestock Waterers
HOMER RIFFEY SERVICE
14686 NW 1700 Rd. • Westphalia, Kansas • 785.448.2384

Blueprint Drawings and Alterations
50 years experience
Larry Eichman
(785) 489-2508
Cell (785) 204-0695

To advertise in this directory contact Stacey or Kari at 785-448-3121.
The Anderson County Review

Dunlops celebrate 50th anniversary

To celebrate their 50th Wedding Anniversary, Charlie and Carolyn Dunlop enjoyed a week's vacation at Dauphin Island, AL, along the Gulf from July 21-28; those joining them for the family get-away included their children (and grandchildren) Doug and Pam Dunlop and August, Jacob and Charity; Darin Dunlop and Michael, Jasmyn and Cordell and Pete and Dierra (Dunlop) Willey and Rhett, all of Parker. The group enjoyed para-sailing, visiting a sea lab, and eating fresh shrimp in addition to a number of other memorable activities. Dauphin Island is only 14 miles long and 1 3/4 miles wide and is connected to the mainland by a three-mile long bridge that was opened to the public in 1982.

Weekend guests of Janice Stahl were Lisa Brown, Lauren Brown and Palmer Smalley, all of Muncie, Ind.

Al and Rita Kerr and Juanita Fann returned home on Tuesday, after a week-long trip to Seattle WA, where they enjoyed a family visit.

Steve and Judy Kinder enjoyed a trip to the city on Friday. While there, they visited with Rob and Robyn Duke and Molly and Tyler Eighmy.

Happy Birthday wishes to Mildred Burk, who turned 90 years-old on Aug 3. Family and friends gathered on Saturday evening at Heritage Park to honor Mrs. Burk for the special occasion.

Congratulations to newlyweds Hannah Page and Greg Reed. The couple was married on Saturday at the First Baptist Church in Paola.

The Helping Hands & Heart Food Pantry is opened each Wednesday from 9 a.m.-11 a.m. Donations are welcome.

Church News
The Methodist Church Congregation celebrated Holy Communion Sunday as Lay-Leader Janice Stahl gave the



by Judy Kinder
Contact (913) 898-6465 or True.blue.ku@gmail.com with Parker news.

Call to Worship John 6:35. Pastor Marti McDougal gave the Opening Prayer and led the congregation in the Unison Prayer of Confession. Pastor McDougal conducted the Time with the Young Disciples and their lesson reflected on going to the fair and with titled "Worshiping Together is More Fun." The Congregational Hymn was titled "Seek Ye First." Mrs. Stahl read the Scripture Lesson from Ephesians 4:1-16. The Sermon Text was read from John 6:24-35 and Pastor McDougal's message was titled "Why do We Seek Jesus?" Carolyn Dunlop assisted with Holy Communion. Candle lighter was Bob Brownback. Ushers were Bob and Nancy Brownback. Pianist and Music Director was Sue Swonger.

A combined service (Parker, Beagle and Fontana) was held at the Beagle church on Sunday evening. The congregations joined together in music and praise for the service. An auction followed the service, raising approximately \$500 that will be donated to the Helping Hands & Heart Food Pantry.

Baptist Church Preston Harrison led Sunday as guest minister. The morning message was titled "What a Difference Jesus Makes." And the scripture text was read from John 9:1-38. The evening message was "God's Plumb Line" and Pastor Harrison read scripture from Amos 7:7-9.

A Back to School Bash will be held for Youth Night On Aug 18 from 4 p.m.-6 p.m. All youth

from preschool through 8th grade are welcome to attend the event which will include a Bible lesson, singing, games & food!

Amazing Grace and Full Gospel Church (Goodrich) The Children's Class studied "God's Power and their Memory Verse was Psalms 136:20. The Intermediate Class studied John 11:1-45 and their Memory Verse was John 11:25. The Adult Class's lesson was titled "Christ our Redeemer" and scripture was studied from Ephesians 1:1-7. Guest Minister Mike Muchow's sermon was titled "Atonement" and scripture was read from Isaiah 53:1-12 and Hebrew 9:11-13 through 10:19. The church welcomed Bill and Sherry Godwyn from Paola.

Centerville News
Happy Birthday to Tammy Brownback on Aug 5, Beverly Snyder on Aug 8 and Pryce Eastwood on Aug 11.

Exercise Mondays are held each week beginning at 8am. The sessions are held in the Fellowship Hall in the Centerville Community Church.

Friends and Pieces Quilters meet each Wednesday at 9 a.m. in the basement of the Centerville Community Church.

Centerville Community Church: The congregation celebrated Holy Communion. Hymns included "Turn Your Eyes to Jesus", "God Will Make A Way", "Standing on the Promises" and "Great is Thy Faithfulness." A presentation titled "Moments for Missions" was given by Jacob Lubeck. The Scripture Text was taken from Joshua 5:13 through 6:5 and Pastor Nancy Snyder-Killingsworth's sermon was titled "God Will Make A Way." Music accompaniments included Jeannie Kautt (vocals and guitar), Maggie McKain (organ), Nancy Lanham (piano) and Nancy Ewing (organ and piano).

God's greatest gift

Weekly Devotional by David Bilderback

In a previous article I referred to the woman who came to Jesus while he was in a crowd and from behind him touched the edge of his cloak and was healed.

In Romans 8:28 we read the following words from the pen of Paul the Apostle, "And we know that for those who love God all things work together for good, for those who are called according to his purpose." This is a difficult text to separate from the other verses around it but I believe there is value in doing that in this case.

First let me say I believe God loves all people in spite of our disobedience and sin. However our text qualifies where God works. He works for good in the lives of those who love him.

This woman was called to Jesus by virtue of her weakness through the Holy Spirit. Contrary to the world view we are actually the strongest when we are the weakest. The woman had exhausted all her

resources seeking a cure. She was at her lowest point. The woman no doubt had heard of Jesus and perhaps listened to his teaching but to this point had effectively rejected him. Through the power of the Holy Spirit she receives the inner call from God and is drawn to Jesus and is healed when she touches the edge of his cloak.

You see it is this inner call that allows God through the Holy Spirit to perform what he intends. The pews in the church are full of people who receive the outer call from sermons and scriptures but reject it for one reason or another. They have a knowledge of God but lack a love for God. This is one of the main reasons the

church struggles.

So what does a love of God which allows him to work in our lives look like. It is a separation of our life from the ungodly, the unholy unto the Godly and the Holy. In Isaiah 55:8 we read, "For my thoughts are not your thoughts, neither are your ways my ways declares the LORD." What God is saying here is in your natural state prior to regeneration you cannot understand me. To attempt to do this is to attempt to bring God out of heaven down to our level.

We are called according to the purpose of God not our purpose. God is at work in your life and mine. Through the regeneration of our heart God works in our lives changing our thoughts and ways to match his. What greater gift could one receive than the call of God.

David Bilderback: A Ministry on the Holiness of God.

Drought-stricken pastures concern for cattle

MANHATTAN – A producer and a veterinarian in western Kansas recently called in the expertise from the Production Animal Field Investigation Unit with the Veterinary Diagnostic Laboratory at Kansas State University to help solve the mystery surrounding deaths of several calves on a drought-stricken ranch.

Gregg Hanzlicek, director of the unit and a veterinarian in the diagnostic laboratory, said the local veterinarian had eliminated all contagious diseases as the cause of the deaths.

"We knew this area had been through two to three years of drought," Hanzlicek said. "We

found a well-managed herd, with the calves getting plenty of milk. But we did notice very little grass for the animals to graze on."

The calves were grazing on multiple weeds. The weeds showing evidence of grazing were collected and sent back to Kansas State for analysis.

"The weeds were all nontoxic, except for one, a Senecio species that causes acute to chronic liver toxicity, which was identified by toxicologist, Dr. Deon van der Merwe," he said. Pathology reports showed that the calves died from liver toxicity.

In a drought situation where there isn't grass, animals will

graze other species of plants that they don't normally consume.

He advised moving the cattle off of the pasture and weaning the calves early.

"In a drought situation, producers usually don't have this alternative. Supplement some type of feed every other day or so, enough to keep them full so they don't eat other plants they don't normally consume," he advised.

In this case, the producer is providing sorghum-sudan as an alternative feed source.

Hanzlicek advised calling in a local veterinarian to investigate any unknown cause of calf deaths.

Anderson County Area Religious Services Directory

BECKMAN MOTORS
North Hwy. 59 in Garnett, KS • (785) 448-5441

www.beckmanmotorsinc.com

See Us For All Your Building Supplies

Paint & Supplies Paneling Deck Materials
Vinyl Replacement Windows Hardware & Moldings
Anderson Windows ROOFING MATERIALS & SHINGLES

Greeley Hardware & Lumber
Downtown Greeley • (785) 867-3540

www.leroycoop.coop

LeRoy Toll Free 1-888-964-2225
LeRoy Tire Shop Toll Free 1-888-964-2288
Westphalia Toll Free 1-877-489-2521
Westphalia Tire Shop (785) 489-2216
Gridley Toll Free 1-877-836-2860

Elder Planning Specialists

Annuitites Medicare Supplement Long Term Care

Scott D. Schulte CSA (785) 448-6191
114 W. 4th • Garnett

Richmond Healthcare and Rehabilitation Center

340 E. South St.
Richmond, Kansas 66080
(785) 835-6135

COUNTRY MART

Hwy 59 at Hwy 31 • GARNETT

Your only locally-owned bank.

131 E. 4th Ave • PO Box 327 • Garnett, KS
(785) 448-3191

GARNETT PUBLISHING, INC
112 W. SIXTH AVE., GARNETT
(785) 448-3121

TRINITY BAPTIST CHURCH
Sunday 9am
Wednesday 7:30pm
East 6th & Hwy 169, Garnett, KS
Pastor - Joshua Ford (785) 304-6581

CHURCH OF THE NAZARENE
Sunday School 9am
Morning Worship 10:00am
Evening Worship 6:30pm
Wednesday Service 7pm
(785) 448-3208 258 Park, Garnett, KS
Pastor - Phil Rhoades

ASSEMBLY OF GOD CHURCH
Sunday School 10am
Sunday Worship 11am, 6pm
Wednesday Bible Study 6pm
Park Road, Garnett, KS
(785) 448-3558
Pastors - William & Judy Brown

TRINITY LUTHERAN CHURCH
Sunday School 9am
Sunday Worship 10am
LWML 2nd Sunday 11:30am
Bible Study - Wednesday 7pm
(785) 448-6930
Hwy 31 & Grant, Garnett, KS
Pastor - Ervin A. Daugherty Jr.

KINCAID SELMA UNITED METHODIST CHURCH
Worship 9am
110 N. Preston, Kincaid, KS
Pastor - Merritt Neilson
(620) 439-5773
Church Office (620) 852-3106

ST. THERESA CATHOLIC CHURCH
Worship Service Saturday 6pm
Richmond, KS
Fr. Gerald Williams
(785) 835-6273

NORTHCOTT CHURCH
Bible School 9am
Morning Worship 10am
Children's Church 10:30am
Evening Worship 5pm
12425 SW Barton Rd., Colony, KS 66015
Pastor - Sharon Voorhees

FIRST BAPTIST CHURCH
Sunday School 9:30am, Morning Svc. 10:30am
Evening Svc. 6pm, Youth Mtg. 7pm
Wednesday Prayer Meeting 6:30pm
Transportation - Call before 8:30
(785) 448-5749
417 South Walnut, Garnett, KS
Interim Pastor - Rodger Tyrrell

BEACON OF TRUTH
Saturday Sabbath Worship 9:30am
Saturday Evening Service 6pm
(except 4th Saturday)
Wednesday Evening Prayer Svc. 7:30pm
Hwy 59 & Allen Rd., Richmond, KS
(785) 893-4407
Minister - Reuben Esh

COLONY CHRISTIAN CHURCH
Adult Sunday School 9:45am
Sunday Worship 10:45am
306 Maple, Colony, KS 66015
(620) 852-3200
Pastor - Mark McCoy

FIRST CHRISTIAN CHURCH
Early Worship 8am
Sunday School (All Ages) 9:15am
Second Worship Service 10:30am
Children's Church 10am
Nursery Provided
Second & Walnut, Garnett, KS
(785) 448-3452
Pastor Darrel Herde
Youth & Children's Pastor - Chris Goetz

COLONY COMMUNITY CHURCH
Sunday Worship 9:30am
Sunday School 10:30am
Risen & Rockin' Sunday School Service 10:35am
(620) 852-3237
Colony, KS 66015
Pastor - Steve Bubna

FIRST BAPTIST CHURCH KINCAID
Sunday School 9:30am
Church 10:45am, Eve Worship 7pm
Wednesday Bible Study 7pm
3rd & Osage, Kincaid, KS
(620) 439-5311
Pastor - Murl McKibben

UNITED METHODIST CHURCH
Sunday School 9:15am
Sunday Worship 10:30am
Bible Study Wed. 5pm/Thurs 7pm
Chancel Bells Wed 6pm
Chancel Choir Sun 9am
Jr. & Sr. UMYF Sundays
U.M. Women 1st Wednesday
(785) 448-6833
2nd & Oak, Garnett, KS
Reverend - Richard Fitzgerald

UNITED METHODIST CHURCH
Sunday School (All Ages) 9:15am
Sunday Morning Worship 10:30am
116 N. Kallock, Richmond, KS
(785) 835-6235
Pastor - Gerald Harnden
(785) 835-6770

WELDA UNITED METHODIST CHURCH
Sunday Church School 9:45am
Church Services & Children's Church 11am
Nursery Available
(785) 448-2358
Welda, KS
Pastor - Bill Nelson

GREELEY UNITED METHODIST CHURCH
Morning Worship 9am
Bible Study (Teens, Adults) 10am
Sunday School (Children) 10am
204 N. Main, PO Box 37, Greeley, KS 66033
(913) 755-2225
Pastor - Richard Fitzgerald

MONT IDA CHURCH OF THE BRETHREN
Sunday School 9:30am
Church 10:40am
(785) 489-2440
RR 1, Welda, KS 66091
Garnett - 7th St, W 7 miles, S 3 miles
Pastor - Kenneth Davidson

ST. JOHNS CATHOLIC CHURCH
Mass Sunday 8am
Greeley, KS
(785) 448-3846
Fr. Brian Klingele

KINGDOM HALL OF JEHOVAH'S WITNESSES
Sunday Public Meeting 10am
Sunday Watchtower Study 10:50am
Tuesday Ministry School 7:30pm
Tuesday Service Meeting 8:20pm
Thursday Congregation Book Study 8pm
704 Westgate - Garnett, KS
(785) 448-6755

HOLY ANGELS CATHOLIC CHURCH
Mass: Saturday 5:30pm, Sunday 10am
(785) 448-3846
514 E. 4th, Garnett, KS
Fr. Matthew Schifflbein

ST. BONIFACE CATHOLIC CHURCH
Sunday Worship 9am
(785) 835-6273
Scipio, KS
Fr. Gerald Williams

ST. TERESA CATHOLIC CHURCH
Westphalia, KS
Mass: Sunday 8:30am
Fr. Marianand Memend
(620) 364-2416

NEW LIFE BAPTIST CHURCH
Sunday School 10am
Sunday Worship 11am, 6:30pm
705 S. Westgate (end of 7th St.)
Garnett, KS
(785) 418-2735
Pastor - Rick R. Randall Sr.

ST. PATRICK'S CATHOLIC CHURCH
Emerald (Hwy 31 West of Harris, KS)
Mass: Saturday 5pm
Fr. Marianand Memend
(620) 364-2416

UNITED BRETHREN IN CHRIST
Sunday School 9:30am
Worship Service 10:30am
2nd & Pine, Garnett, KS
Pastor - Ann Loewe

COLONY UNITED METHODIST CHURCH
Church Services 10:30am
Colony, KS
Parsonage (620) 852-3103
Church Office (620) 852-3106
Minister - Rev. John G. Sheehan

GEM Farm Center
N. Hwy 59, Garnett • (785) 448-3323
Your Old Fashioned Person-to-Person Store
Garnett's Equipment Market

- Stihl
- Unverferth
- Reese
- Bush Hog
- Mayrath

Garnett Monument Works

Quality Cemetery Monuments & Markers
Window Glass
Furniture Tops
Mirrors

MEMBER MONUMENT BUILDERS OF NORTH AMERICA THE MARK OF EXCELLENCE

126 W. Fifth
Garnett, KS
(785) 448-6622

The Anderson County Review

GARNETT PUBLISHING, INC
112 W. SIXTH AVE., GARNETT
(785) 448-3121

Wilson Chiropractic Clinic
Lynn A. Wilson D.C., P.A.

Treatment For Your Back & Joint Pain
Sports, Auto and Work Injury Care

414 W. First • Garnett
(785) 448-6151

HOMETOWN HEATING & COOLING, LLC
HOME COMFORT SPECIALIST

Heating & Air Conditioning
(785) 448-3235
519 W. First Ave. • Garnett

SONIC

Hwy 59 in Garnett, KS
(785) 448-6393 or (785) 448-6494
Call-ins Welcome!

GSSB
GARNETT STATE SAVINGS BANK

785-448-3111 800-862-9512 785-448-2020 785-942-6777 785-569-3211
900 S. 2nd Street, Garnett, MO 64449 1100 N. Main, Garnett, MO 64449
GARNETT, MISSOURI COLONY, MISSOURI GARNETT, KANSAS OTTAWA, MISSOURI PAOLA, MISSOURI

24-HOUR ATM at Garnett, Colony & Ottawa branch locations and inside the Short Stops at 120 S. Maple in Garnett and 1821 S. Main in Ottawa. Business Hour ATM located at the WA-Mart in Paola.

KOFO
1220 AM

Anderson County News
Mon - Fri 8:00am

Country Favorites

For additions, subtractions or changes to your church information, a church official may contact the Review at (785) 448-3121.

Richmond Fair results announced

Results of the 2012 Richmond Free Fair from July 12-14 have been announced.

4-H Awards:

Beef Steer: Champion – Gracie Rockers, Reserve – Mercedes Smith
 Beef Heifer: Champion – Brock Woods, Reserve – Lane Higbie
 Dairy Heifer: Champion – MaKeena Ferguson, Reserve – Shelby Ferguson
 Bucket Calf: Champion – Avery Stalford, Reserve – Noah Short
 Market Hog: Champion – Danielle Nading, Reserve – Tyler Duling
 Gilt: Champion – Trint Peine, Reserve – Lane Higbie
 Market Lamb: Champion – Tessa Louk, Reserve – Morgan Jilek
 Ewe: Champion – Lane Higbie, Reserve – Birttany Hornbuckle
 Meat Goat: Champion – Avery Stalford, Reserve – Tessa Louk
 Dairy Goat: Champion – Keelea Benedick

Canning Best Entry Pickles – Jake Kice, Soft Spread – Amanda Raby
 Best Loaf of Yeast Bread – Nastasja Carlson
 Champion 4-H Floriculture – Alexa McCurdy
 Champion 4-H Clothing/Crocheting – Nastasja Carlson, Reserve – Brittany Hornbuckle
 Champion 4-H Arts and Crafts – Champion – Megan Schuster, Reserve – Morgan Jilek
 Champion 4-H Garden Exhibit – Brianna Sobba, Reserve – Brianna Sobba
 Champion 4-H Woodworking – Shelby Cardell
 Champion 4-H Electricity – Coyd Gardner
 4-H Life Skills Family and Consumer Sciences Judging: Individual – 1st Lane Johnson, 2nd, Sierra Hahn, 3rd Cyla Gardner; Team – 1st Burg Go Getters Team 1, 2nd Rantoul Record Breakers, 3rd Burg Go Getters Team 2

Open Class Awards:

Champion Loaf Yeast Bread – Dale Chambers
 Champion Loaf Machine Bread – Carol Bauck
 Canning: Fruit: Champion – Sr. Loretta Roeckers, Reserve – Margaret Moore
 Vegetables: Champion – Sr. Loretta Roeckers, Reserve – Sr. Loretta Roeckers
 Pickles: Champion – Donna Fernandez, Reserve – Sr. Loretta Roeckers
 Soft Spread: Champion – Carol Bauck, Reserve – Amanda Raby
 Arts and Crafts Champion – Tonya Williams
 Textiles Champion – Mary Martin

Flower Champions:

Div. I (growing plants and flowers) – Marvin Gretencord
 Div II (cut flowers) – Bill Brechieson
 Div. III (children 9 years and younger) – Corbin Ellefson
 Div. IV (juniors 10-16 years) – George Oswald
 Div. V (artistic arrangement) – Bill Brechieson
 Div. VI (misc. artistic arrangements) – Donna Fernandez
 Most entries – Sr. Loretta Roeckers

Parade:

Open Class Floats – 1st Richmond Museum, 2nd Roeckers Family, 3rd Central Street Bar & Grill
 Youth Floats – 1st Central Heights FFA, 2nd – Golden Achievers 4-H Club, 3rd Richmond Public Library
 Best Decorated Child's Velocipede: 1st Faith Mildfelt, Gracie Tooley & Eli Becker, 2nd Hannah, Emma, Jenna & Mya Jumet
 Best Decorated Bicycle – 1st Justin Quinlin, 2nd Davanna Wicks, 3rd Tabby Wicks
 Pet Parade – 1st Hannah, Emma & Jenna Jumet
 Best Costume Relating to Parade Theme – 1st Eliza Prothe, 2nd Zoi Prothe, 3rd Olivia Stockard
 Grand Champion of Children's Parade – Faith Mildfelt, Gracie Tooley & Eli Becker

Champion All-Around Horse: Junior – Sarah Miller, Intermediate – Morgan Egidy; Senior – Tessa Louk; Reserve – Brittany Hornbuckle, Inter. – Austin Louk
 Large Fowl: Champion – Reagan Lee, Reserve – Noah Short
 Bantam: Champion – Jayden Lee, Reserve – Faith Mildfelt
 Production Pen: Champion – Jayden Lee, Reserve – Amanda Raby
 Meat Pen: Champion – Ben King, Reserve – Amanda Raby
 Water Fowl: Champion – Faith Mildfelt, Reserve – Caleb Short
 Pigeon: Champion – Brandon Englund, Reserve – Jayden Lee
 Rabbit: Champion – Noah Short
 Beef Fitting and Showing: Champion Jr. – Lane Higbie, Inter. – Justin Peine, Sr. – Trint Peine; Reserve Champion Jr. – Sierra Hahn, Inter. – Brock Woods, Sr. – Mercedes Smith
 Dairy Fitting and Showing: Champion Inter. – MaKeena Ferguson, Sr. – Shelby Ferguson; Reserve Champion Inter. – Stewart Bischoff
 Sheep Fitting and Showing: Champion Jr. – Brittany Hornbuckle, Inter. – Morgan Jilek, Sr. – Tessa Louk; Reserve Jr. – Lane Higbie, Inter. – Austin Louk, Sr. – Cheyenne Asbury
 Swine Fitting and Showing: Champion Jr. – Tyler Duling, Inter. – Danielle Nading, Sr. – Torrie Hathaway; Reserve Jr. Jonathan Duling, Inter. – Justin Peine, Sr. – Trint Peine
 Goat Showmanship: Champion Jr. – Avery Stalford, Inter. – Austin Louk, Sr. – Tessa Louk; Reserve Jr. – Mercedes Benedick, Inter. – Alexa McCurdy, Sr. – Acetin Benedick
 Horse Showmanship: Jr – Daelyn Peine, Inter. – Austin Louk, Sr. – Tessa Louk
 Rabbit Showmanship: Jr. – Conner Erhart, Inter. – Alyssa Jones, Sr. – Caleb Short
 Poultry Showmanship: Champion Jr. – Cyla Gardner, Inter. – Coyd Gardner, Sr. – Amanda Raby; Reserve Jr. – Reagan Lee, Inter. – Jayden Lee, Sr. – Vincent Hamilton
 Livestock Judging – Jr. Div. 1st – Jonathan Duling, Sr. Div. 1st – Torrie Hathaway
 Champion 4-H Food Exhibit – Champion – Chrystal Conner, Reserve – Matheu Egidy

Richmond Library



THE ANDERSON COUNTY REVIEW 08-14-2012 / Photo Submitted

Richmond Library had a party to recognize the end of its Summer Reading Program. Everyone who attended enjoyed a sno cone, bag of chips and a cookie. More than 50 people attended the party.

Richmond Library marks end of summer

The Richmond Public Library 2012 Summer Reading Program has come to an end. Wednesday, Aug. 1, was the end of summer reading party. Prizes were handed out to those who earned them. Everyone got a sno cone, bag of chips and a cookie that attended the party, and over 50 people in the little library is a lot.

This year there were 12 adults signed up, 12 teens and 45 kids 5th grade and under. At the end of Summer Reading party prizes were handed out to top readers.

This year winners were:

- Donna Thompson and Maggie Moore - Top adult readers.
- Savannah Alley and Riley Roll -

Top teen readers.

- Sean Weber and Kenzie Weber - Top 3rd - 5th grade readers.
- Drake Weber, Damien Geiler and Sheridan Weber - Top "reading with help."
- Ashley Harkins, Alicen Franks and Tia Brown - Top listeners.

Beckmon graduates from UMKC School of Pharmacy

The School of Pharmacy at the University of Missouri-Kansas City has announced the 2012 Spring Semester Dean's List.

Graduates from Anderson County High School included on the list are: Marilyn Beckmon, daughter of Tom and Marcia Peine of Greeley, grand-daughter of Don and Nadine Poss of Richmond and daughter-in-law of Leland and Gayle Beckmon of Kincaid. Marilyn is a 1998 graduate of ACHS, 2003 graduate of Kansas State University and will complete the pharmacy

program at UMKC in May 2013. She resides with her husband, James, in Overland Park.

To qualify for the Dean's List, a student must maintain a 3.5 or higher GPA while completing a minimum full-time program of 12 graded hours.

Diebolt's Best Rental Center


INSIDE
1-888-444-4346

DIEBOLT LUMBER & SUPPLY

Don't Rent Old Worn Out Equipment Again. We Have ALL NEW EQUIPMENT:

LAHARPE, KANSAS
5 mi. east of Iola to LaHarpe and Highway 54 jct., 1 mi. south and 1/4 mi. east.

OPEN:
Mon.-Sat. 7 a.m.-6 p.m. Sun. 10 a.m.-6 p.m.
www.dieboltlumber.com

 Find us on Facebook

Stay in the loop with daily news updates and breaking news from the Anderson County area.



Visit Miami County!

These Miami County businesses appreciate your patronage and encourage you to visit your local merchants in Miami County!

MIDDLE CREEK THEATRE
 Rutlader Outpost, 69 Hwy. & 335th St., Louisburg
 7:30 p.m. Every Saturday
 Adults \$12.50 • Seniors (55+) \$12 • Kids 12 & Under \$6
 For more info and/or reservations: 1-866-888-6779
 If weather is questionable, please call. www.rutladeroutpost.com

PARK PLAZA LIQUOR
 Our wine selection is unsurpassed!
 COLDEST BEER IN TOWN
 1403 Baptiste Dr. M-Sat 9am-11pm
 PAOLA • 913-557-5600 Sun Noon-8pm

Coach Light
 545 Main, OSAWATOMIE
 913-755-2514
 LADIES' FASHIONS • TUXEDOS • GIFTS
 M-F 9:30-5 / SAT. 10-3

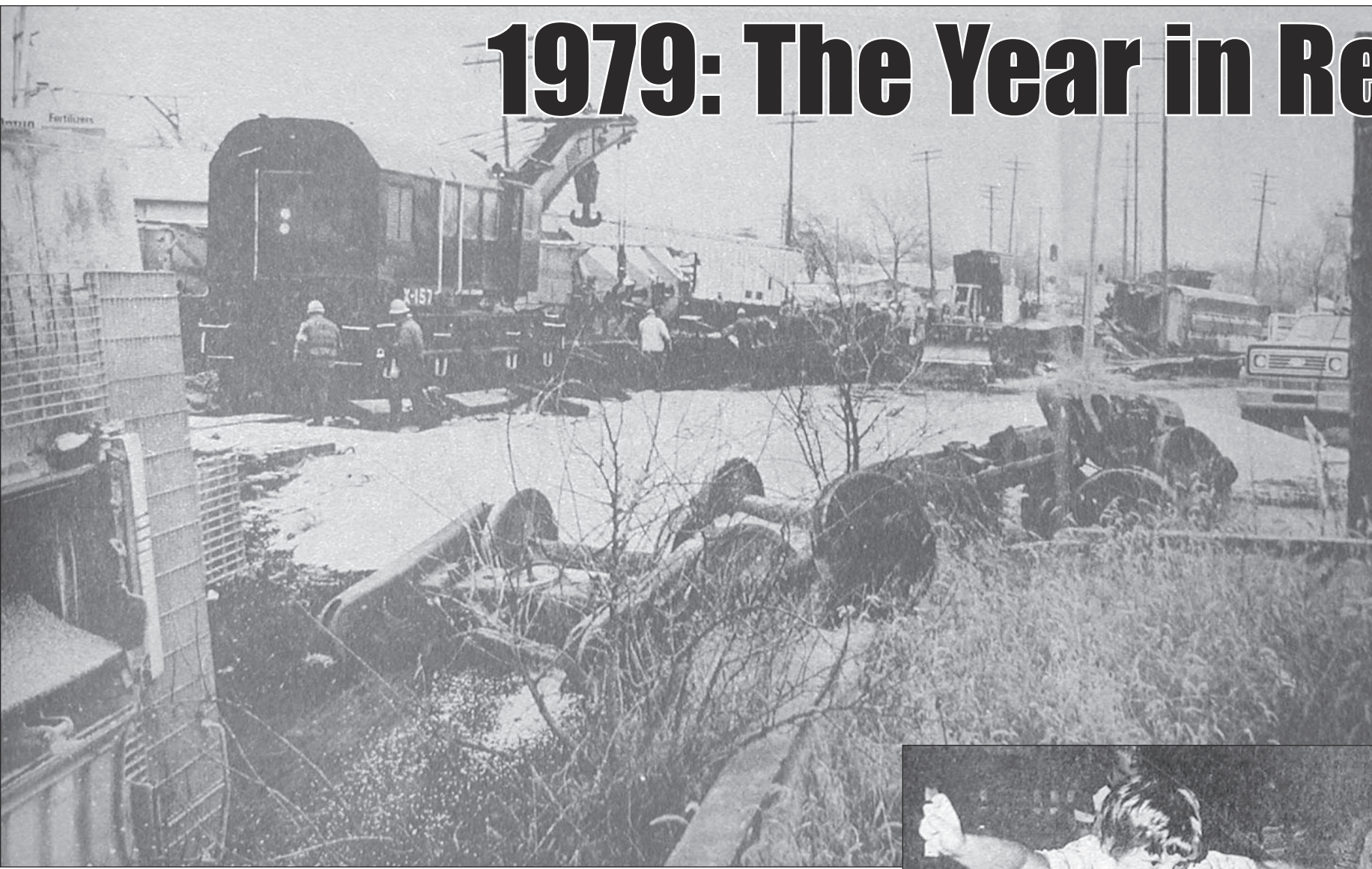
Family service from one of Garnett's own hometown families!
MIDWEST COLLISION INC.
 31570 Old KC Rd. • PAOLA • (913) 294-4016

To advertise your business here contact Stacey or Kari at (785) 448-3121.

Rutlader Auction Gallery
 Monthly, 1st Thurs, 6pm • Rutlader Outpost Complex
 33611 Metcalf Rd., Louisburg, KS 66053
 CONSIGNMENT SHOWROOM
 Accepting: Furniture, Tools, RV, Trailers, Autos, Etc.
 For more info call (913) 285-0076 To consign items call for an appointment

The Anderson County
Review
 112 W. 6th • Garnett, KS • (785) 448-3121

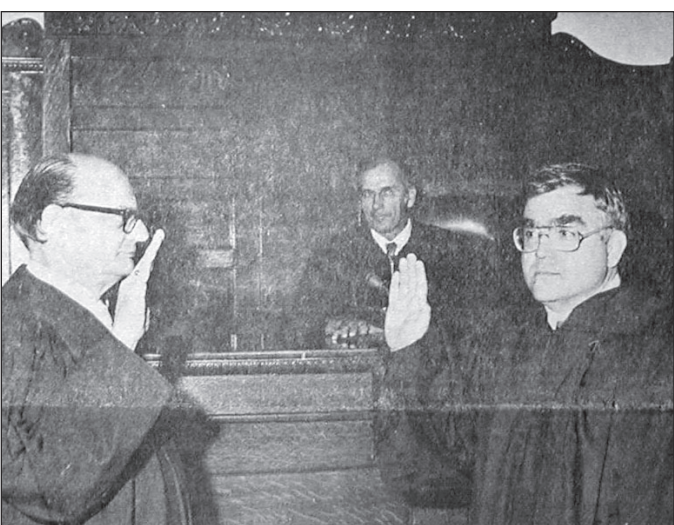
1979: The Year in Review



A Missouri-Pacific train derailed late in 1979, spinning seven cars into Garnett. All cars were loaded with corn.



Mike Hermann is deep in concentration at the Garnett Bowling Center.



Above, Judge James J. Smith was installed as new Associate District Judge for the Fourth Judicial District.



At right: Bob Cramer shows his stained glass creation.



The Westphalia Boys basketball team. Front row, from left: Mickey Blaufuss, Dewayne Davis, Tim Weingartner, Brian Combs, Doug Young, Arlan Kleinsorge; second row: Kenny Frank, David Ratliff, John Tucker, Billy Young, J.D. Morey and Jay Riley; third row: Alton Ludolph, Vic Blaufuss, Kevin Parks, Jeff Dieker and Ronnie Bryant.



Glenn Caldwell Jr. came to the rescue of quite a few of his stranded neighbors during the snow storm that blanketed Anderson County and closed roads to nearly all traffic. Some drifts were estimated at 6 feet high.

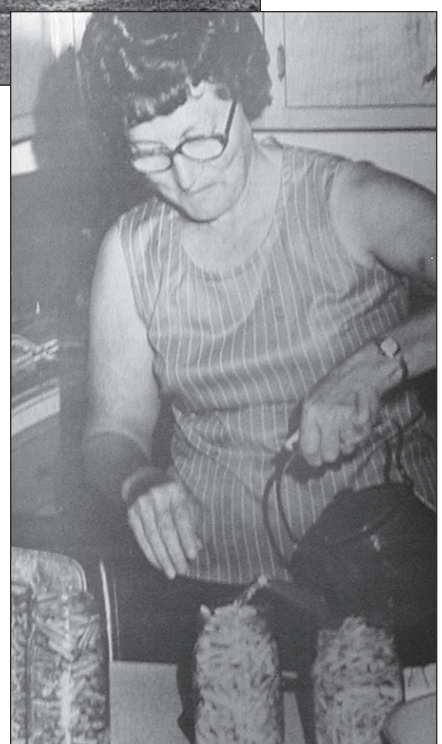
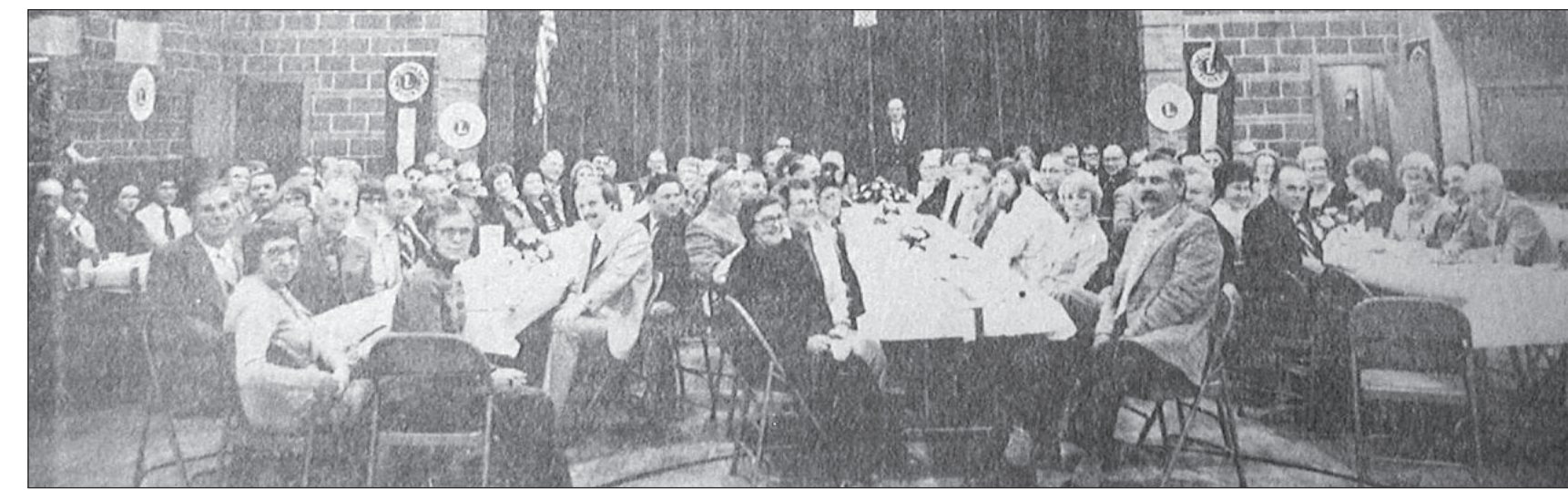


A record-setting nine babies were born at Anderson County Hospital the day before Christmas. Nurse Leota Meliza had her hands full keeping peace in the nursery.



A tremendous gasoline fire at the Greeley Co-Op Elevator required the assistance of fire units from four counties to contain. The fire began when a grain truck rolled down from a ramp and hit the gasoline transport truck shown on the left.

Below: The Garnett Lions Club celebrated 40 years with 98 members and guests.



Doris Hultz works on home canning.

Colony to have public hearing

(Published in The Anderson County Review Tuesday, August 14, 2012)

Community Improvement Public Hearing Notice

The city of Colony, KS will hold a public hearing on Wednesday, August 29th, 2012, at 7pm, in the city hall, for the purpose of considering an application to be submitted to the Kansas Department of Commerce for Small Cities Community Development Block Grant funds under the Water and Sewer Category. A specific project application to be discussed is a Phase Two Sanitary Sewer Collection System Improvements Project in an area generally bounded by the city limits of Colony, KS.

The project will make improvements to the sanitary sewer collection system by rehabilitating approximately 13,250 LF of 8" sewer

line with CIPP. The project will also replace approximately 200 LF of 8" sewer main, make approximately 30 point repairs to 8" sewer main, replace approximately 50 service taps while making repairs to disturbed street surfacing, and include miscellaneous appurtenances related to construction activities. The total project costs are anticipated to be approximately \$1,003,000 with an estimated CDBG request for \$500,000. Other project proposals introduced at the hearing will be considered. Oral and written comments will be recorded and become part of Colony's CDBG Citizen Participation Plan. Reasonable accommodations will be made available to persons with disabilities. Requests should be submitted to the city clerk (620.852.3530) by August 28th, 2012.

ag141t

Notice of judgment filed

(First published in The Anderson County Review Tuesday, August 14, 2012)

NOTICE OF PUBLICATION

TO: DUANE CAMPBELL Jr

You are hereby notified that on 4/11/12, the Plaintiff Credit Management Services, Inc., filed a Complaint in the COUNTY Court of DODGE County, Nebraska, against you shown as Case Number CH12 471. The object and prayer of which is a judgment in the amount of 894.05, plus court costs, pre-judgment interest and attorney fees, if applicable.

The Complaint prays that judgment be entered against you. You are hereby noti-

fied that you must answer the Complaint on or before 9/27/12 at the COUNTY court of DODGE County, FLEMONT Nebraska.

DANA KAY FRIES #22411
JANE J. RICHARDSON #19833
TESSA P. HERMANSON #23179
JESSICA L.V. PISKORSKI #24243
BRADY W. KEITH #24305
SETH W. YOUNT #24762
PO Box 1512
Grand Island, NE 68802
308 398-3801

Attorney for Plaintiff

ag143t

Notice to declare lease void

(First published in The Anderson County Review Tuesday, August 14, 2012)

TO: DD ENERGY, INC.

I, John J. Bengé, President, Northwest Missouri Land Company, a Missouri corporation (hereinafter "NMLC"), the undersigned owner of the following described land situated in Anderson County, Kansas, to wit: Southeast Quarter (SE 1/4) of Section 27, Township 21, Range 21 in Anderson County, Kansas ("Real Property"), and Lessor under the Oil and Gas Lease, dated May 15, 1978, originally between John M. Eastburn, as Lessor, and David R. Victorino, as Lessee (hereinafter the "Lease") does, for the second and final time, hereby notify you that the terms of the Lease have been broken by the current operators/owners thereof, which I understand to be DD energy,

Inc., Falun Oil & Gas, LLC and/or PO & G Resources, LP, that NMLC does hereby elect to declare, did and does again declare, that the Lease is forfeited and void and that, unless, within twenty (20) days from this date, you notify the Register of Deeds of Anderson County, Kansas, as provided by law, that the Lease has been forfeited, I will re-file with said Register of Deeds an Affidavit of Forfeiture, as provided by law. Furthermore, I hereby demand that you execute, or have executed, a proper surrender of the Lease and that you file the same of record in the Office of the Register of Deeds of Anderson County, Kansas within twenty (20) days from this date.

John J. Bengé, President
Northwest Missouri Land Company

ag143t

Kincaid to have budget hearing

(Published in The Anderson County Review Tuesday, August 14, 2012)

NOTICE OF BUDGET HEARING

The governing body of
City of Kincaid

will meet on September 10, 2012 at 7:00 pm at City Hall for the purpose of hearing and answering objections of taxpayers relating to the proposed use of all funds and the amount of all valorem tax. Detailed budget information is available at City Hall and will be available at this hearing.

BUDGET SUMMARY

Proposed Budget 2013 Expenditures and Amount of Current Year Estimate for 2012 Ad Valorem Tax establish the maximum limits of the 2013 budget. Estimated Tax Rate is subject to change depending on the final assessed valuation.

FUND	Prior Year Actual for 2011		Current Year Estimate for 2012		Proposed Budget for 2013	
	Expenditures	Actual Tax Rate*	Expenditures	Actual Tax Rate*	Budget Authority for Expenditures	Amount of 2012 Ad Valorem Tax
General	35,645	44.553	41,900	69.946	61,365	28,800
Debt Service	14,364	35.851				70.951
Library						
Special Highway	20,008		21,624		17,180	
Water	34,346		33,450		34,558	
Sewer	22,682		21,954		26,549	
Trash	5,115		5,200		5,200	
Other Budgeted Funds	8,279					
Total	140,439	80.404	124,128	69.946	144,852	28,800
Less: Transfers	7,568		0		144,852	
Net Expenditure	132,871		124,128		144,852	
Total Tax Levied	37,885		78,748		XXXXXXXXXXXXXXXXXXXX	
Assessed Valuation	409,269		411,969		407,181	

Outstanding Indebtedness,	2010		2011		2012	
	Amount	Rate	Amount	Rate	Amount	Rate
January 1,	20,600	0	15,690	0	0	0
G.O. Bonds	0	0	0	0	0	0
Revenue Bonds	124,966	0	129,564	0	123,672	0
Other	0	0	0	0	0	0
Lease Purchase Principal	0	0	0	0	0	0
Total	154,566	0	145,254	0	123,672	0

*Tax rates are expressed in mills
Joyce Sign
City Official Title: Treasurer

ag141t

Notice to settle Borrer estate

(First published in The Anderson County Review, Tuesday, August 7, 2012)

IN THE DISTRICT COURT OF ANDERSON COUNTY, KANSAS

In the Matter of the Estate of MAX D. BORROR, Deceased.
Case No. 11-PR-2

and expenses should be allowed; the costs be determined and ordered paid; the administration of the estate be closed; upon filing of receipts, petitioner be finally discharged as administrator and released from further liability.

You are required to file your written defenses thereto on or before the 30th day of August, 2012, at 9:00 a.m. in the District Court, Garnett, Anderson County, Kansas, at which time and place the cause will be heard. Should you fail therein, judgment and decree will be entered in due course upon the petition.

MAX D. ROCKERS
Administrator

Terry J. Solander #07280
503 S. Oak St. - P.O. box 348
Garnett, KS 66032-0348
785-448-6131; FAX: 785-448-2475
solander@embarqmail.com
Attorney for Administrator

ag813t

Lone Elm files notice to regulate vacant properties

(First published in The Anderson County Review, Tuesday, August 7, 2012)

City of Lone Elm
Ordinance No. 43

An ordinance for regulating the safety of vacant properties.

Be it ordained by the Mayor and Council of the City of Lone Elm.
Section I, That vacant properties shall be made safe.

- All broken windows and doors shall be boarded up.
- All wells shall be adequately covered or properly filled in.
- All grass shall be kept mowed to a length, not to exceed 8 inches.
- All trees overhanging streets or allies shall be trimmed as to not impede travel.

Section II, That failure to comply with any of the above will require the town to:

- Send one letter to inform owner of ordinance
- Send a second letter 30 days later remind owner of noncompliance.
- Send a final letter informing owner that failure to comply will result in the city hiring the necessary work completed and a lien will be applied for the cost of said work to said property.

Section III, That this ordinance shall take effect upon its publication in the two Anderson County newspapers.

Mayor: /s/ Howard E. Ludlum
Council: /s/ Eileen Johns
/s/ Jean A. Johns
/s/ Mike Johns
/s/ Lori Morrison
/s/ Wilma Morrison
City Clerk: Linda Ludlum

ag712t

Notice of adoption filed

(First published in The Anderson County Review, Tuesday, August 7, 2012)

IN THE DISTRICT COURT OF ANDERSON COUNTY, KANSAS

PROBATE DIVISION

In the Matter of the Adoption of:
BABY BOY COLTRANE
Birthdate: July 25, 2012
Case No. 12AD2
K.S.A. Chapter 59

To: Andrae Nehemiah Jones, Brandon Collins, and any unknown biological father

NOTICE OF HEARING ON PETITION FOR ADOPTION

The state of Kansas to all persons concerned:

You are hereby notified that a Petition for Adoption has been filed in this court in the above-captioned matter alleging that you are a putative father of the above-named child and praying for the termination of your parental rights, and you are hereby required to file your written defenses thereto on or before the 31st day of August, 2012, at 9:00 o'clock a.m. in said court, at the Anderson County Courthouse, 100 E. 4th Street, Garnett, Kansas, at which time and place said cause will be heard. Should you fail to appear therein, judgment and decree will be entered in due course upon the petition.

Kevin W. Kenney #17448
7301 Mission Rd., Ste. 243
Prairie Village, Kansas 66208
Tel.: (913) 671-8008
Fax: (913) 671-7740
kwklawfirm@aol.com

ATTORNEY FOR PETITIONERS
ag713t

Notice to settle Clark estate

(First published in The Anderson County Review, Tuesday, August 7, 2012)

IN THE DISTRICT COURT OF ANDERSON COUNTY, KANSAS

In the Matter of the Estate of Richard Franklin Clark, Deceased.

Case No. 11 PR 23

NOTICE OF HEARING

THE STATE OF KANSAS TO ALL PERSONS CONCERNED:

YOU ARE HEREBY NOTIFIED that a Petition for Final Distribution has been filed in this Court by Brenda Lee as the executor of the estate of Richard Franklin Clark, praying for a final settlement of the estate, approval of her acts, proceedings and accounts as executor, allowance for attorney fees and expenses,

determination of heirs, devisees and legatees entitled to the estate and assignment to them pursuant to the will of Richard Franklin Clark.

You are required to file your written defenses thereto on or before August 30, 2012 at 9:00 a.m. of said day, in said Court, in the City of Garnett, in Anderson County, Kansas, at which time and place said cause will be heard. Should you fail therein, judgment and decree will be entered in due course upon the Petition.

Brenda Lee, Petitioner

Mark Doty
GLEASON & DOTY, CHARTERED
401 S. Main, Suite 10
PO Box 490
Ottawa, KS 66067-0490
(785) 242-3775 Fax (785) 242-3855
Attorney for Petitioner

ag713t

Be sure to tell your attorney...

Public Notices required to be published as part of estate settlements and other court actions are, and have always been

20%-30% CHEAPER

when published in
THE ANDERSON COUNTY REVIEW
as opposed to any other local publication.

Save money on your legal costs by directing your attorney to place those notices only in The Anderson County Review.

Attorneys & Clients feel free to contact us at
(785) 448-3121



The most reliable
overnight shipping service,
available 24-hours-a-day!

Saturday delivery available too!

Federal Express - Overnight Delivery
The World On Time®

Located at



112 W. Sixth Street, Garnett, Kansas

FOR RENT

Newly decorated - space on Hwy. 59 in Garnett for offices or retail. Call (785) 448-9045 or (785) 448-6582. ap17tf

12 Ivy Terrace, Garnett - 3 bedroom with full basement, like new, CHA, with appliances, large backyard, double attached garage, auto opener, \$1,095/month. Call (620) 496-6161 or (620) 496-2222. jy24tf

House in the country - Scipio area. 1/16 mile off blacktop. 3 bedrooms, 1 bath, CH&CA, natural gas, rural water. Available September 1st. \$600/month + deposit and references. Herman Ackmann (913) 886-7302. ag7tf
820 W. 9th in Garnett - 3 bdrm, 2 bath, large yard, garage, central heat & air, \$600/mo. \$600 deposit. (785) 893-2150. ag14t2
1 bedroom - apartment, partially furnished. No pets. (785) 448-3158 or (785) 448-8676. ag14t2
3 bedroom - very clean, CH & CA, \$500/month. (785) 418-5435. ag14tf

REAL ESTATE

Benjamin Realty
Sherry Benjamin, Broker
Land • Homes • Commercial

201 N. Maple
Garnett, KS 66032
benjaminrealty@earthlink.net

Office: (785) 448-2550
Home: (785) 241-0532
Cell: (785) 304-2029

CLICK
www.garnettrealestate.com
HERE!

Property Source, LLC
913-884-4500
YOUR SOURCE FOR GREAT INVESTMENTS!

LAND-FARMS
Investment Property
RESIDENTIAL

Chris Cygan
785-418-5435

500 N. Pine
PRICE REDUCED \$149,000. 3Br 2 Ba, office, basement, CH&CA. Near city recreation!
Call Lou Ann Shmidl 785-448-4495

United Country
Prairie Spirit Realty
309 N. Maple

CARS & TRUCKS

2006 Dodge Truck 2500 - Quad cab, 5.7L, auto, 84k, loaded!!! \$16,500. Call or text (785) 893-4060. ag14tf

ECKAN (a community action agency) is seeking to hire an ANDERSON COUNTY HUMAN SERVICES COORDINATOR. This position will operate out of Garnett to provide case management and other support services to low-income families throughout Anderson County. Must be able to create and maintain effective community partnerships. Bachelor's Degree in Human Services field preferred. For a complete job description go to www.eckan.org. A printable application can also be downloaded from the site for interested applicants. 785-242-7450, ext. 7100. EOE M/F/D/V.

BUY 3, GET 1 FREE
ON CLASSIFIED DISPLAY ADS!

The Anderson County
Review

Reach over 16,000 readers with placement in the Review!
We get the word out - guaranteed!

(785) 448-3121 • FAX (785) 448-6253 • review@garnett-ks.com

ELIZABETH LAYTON CENTER
For Hope and Guidance

Attendant Care Provider

The Elizabeth Layton Center has full and part-time openings to provide support for individuals having a severe and persistent mental illness in a residential setting in Paola. Available shifts include 4:00pm - 12:00am or 12:00am - 8:00am., weekdays and weekends. Days/hours to be determined upon hire. Training provided. Must has valid driver's license with good driving record. Position open until filled. **Apply at 401 N. East Street in Paola or Submit interest & resume to:**
ELC
P.O. Box 677, Ottawa, KS 66067
or by email hr@laytoncenter.org. EOE

Valnet (888) 332-1616
We Connect You

INTERNET+

- FREE Dial-Up Accelerator
- FREE UNLIMITED Phone Technical Support
- FREE Local Access
- NO CONTRACT
- NO Taxes Added
- NO Up-Front Fee
- Set-Up in Minutes!

\$19.95
Unlimited Access



Need a place to *hang your hat*? Check out our Real Estate Classifieds!

More LOCAL customers read Review classifieds than any other newspaper!

Rates
Up to 20 Words.....\$4.95
Each addt'l word.....55¢
(Commercial.....65¢)

BONUS: Add \$2 for 10,000 additional households in Lawrence/Douglas County in The Trading Post.

Display Ads, per column inch.....\$8.50
Statewide placement available, Call for details.

Terms

- Cash in advance
- Visa, Mastercard, Discover
- Credit to established accounts

STATEWIDE ADVERTISING

Statewide ads run in more than 100 participating papers across Kansas. Call for details on other states.

2x2 - \$800, one run
2x4 - \$1,650, one run
25 word classified - \$300, one run
Call for deadlines and more details.

Deadline

Classified Ads: 10am Friday
Display Ads: Noon Thursday

Call or send in your ad:
(785) 448-3121
(800) 683-4505 (out of area)
FAX: (785) 448-6253
EMAIL: admin@garnett-ks.com

Mail:
Garnett Publishing, Inc.
P.O. Box 409
Garnett, KS 66032

GARAGE SALES

Estate Sale - Friday, August 17, 4pm-7pm and Saturday, August 18, 8am-1pm. 321 S. Spruce. Oak kitchen table with four chairs, household, furniture, misc. ag14t1

SERVICES

Piano Lessons - Lessons from an experienced teacher with a Masters of Music degree and 10 years experience. Teaching public school music. (785) 448-4658. Message or text tara.gray79@yahoo.com ag14t2*

Nicki's Daycare - has 5 full-time openings beginning in September. Call (785) 764-3206 to reserve your spot. ag7t3*

Alcoholics Anonymous - Garnett: Tues. & Thurs. 7 p.m., 105 1/2 East 4th Ave., (620) 228-2597 or (785) 241-0586. nv21tf

Mobile Home Insurance. We have great rates on mobile homes that are less than 15 years old. Archer Insurance Agency, 118 E. 5th Street, P.O. Box 307, Garnett, Ks. 66032 (785) 448-3841. my23tf

Hope Unlimited offers services to victims of domestic violence and sexual abuse. Call (620) 365-7566 or Kansas hotline (888) END-ABUSE (select local option) for free, confidential assistance. ag24tf

Bill Stanford Tree Trimming since 1987. Insured, licensed, free estimates. (785) 835-6310. jy31t4*

SERVICES

FREE ESTIMATES
5" Seamless Gutters
Fascia & Soffit Repair
Four Seasons Contracting, Inc
(620) 490-0843 • (620) 490-0842

Let us list your items on

We take the hassle out of selling your items.
Call us for details!

Review
785-448-3121
800-683-4505
or email: review@garnett-ks.com

NOTICES

Meet singles right now! No paid operators, just real people like you. Browse greetings, exchange messages and connect live. Try it free. Call now 1-888-945-3424

FARM & AG

Wanted - Row cropland to cash rent. Top cash rent paid. 1-5 year lease. Rent terms flexible. (641) 344-0627. Serious inquiries only. ag14t2*

FARM & AG

Ron Mayes, RM Trucking thanks all customers for past work hauling cattle. Now NEW 7x26 stock trailer for your needs.
620-205-6688
I have always had KCC authority, cargo insurance and DOT#946482 for your protection.

Make it grow!

Your wallet that is. Ag products and services sell when they're listed here. Call the Review today to place your ad. (785) 448-3121

LAWN & GARDEN

HECK FARMS FAMILY PRODUCE
SWEET CORN & TOMATOES
Thursday Evenings • 4:30-7:00pm
Farmers Market - Downtown Garnett
4th St & 59 Hwy • 3:00-6:00
Tuesdays and Fridays

LAWN & GARDEN

Bennett's Lawn Service
Mow • Trim • Leaf Removal • Clean Gutters
Call Bob at
(785) 304-0251 or
(785) 448-6534

PETS

Registered Shih Tzu - puppies. Males, \$250, females, \$300. Older male puppies, \$100 each. (785) 733-2699. ag14t3*

LOST & FOUND

Found - keys found at 6th & Walnut. Call to identify. (785) 448-3121. ag7t2*

HAPPY ADS

Happiness is . . . Canning tomatoes from Heck Farms. (785) 448-0319 or (785) 204-0369. jy24tf

Happiness is . . . Donating your old National Geographic magazines to ACJSHS art. Will take others too. Call Jennifer Sibley, 448-3400. ag7t1*

LOCALLY OWNED
You're reading the only one that is!
Subscribe Today
(785) 448-3121

ECKAN Head Start is seeking a part-time teacher aide for Anderson County Head Start. Hours are 8:45am-1:45pm. If you have children in school this would be an excellent part time job to work around your schedule. For a job description and printable application go to www.eckan.org Position open until filled. 785-242-7450, ext. 7100. EOE MFVD

HELP WANTED

Drivers: No experience? Class A CDL Driver Training. We train and Employ! Experienced Drivers also Needed! Central Refrigerated (877) 369-7885 www.centraltruckdrivingjobs.com

Owner Operators Weekly Home Time Dedicated to One Customer! 100% fuel surcharge Class-A CDL, 1 year experience, including 6+ months tanker. 866-478-9965 DriveForGreatwide.com

"You got the drive, We have the Direction" OTR Drivers APU Equipped Pre-Pass EZ-pass passenger policy. Newer equipment. 100% No touch. 1-800-528-7825

Airline Careers - Become an Aviation Maintenance Tech. FAA approved training. Financial aid if qualified - Housing available. Job placement assistance. Call Aviation Institute of Maintenance 888-248-7449.

MISC. FOR SALE

Free CD - "The Success Secrets They Don't Want You To Know About." Call (785) 304-0778. ag14t4*

Back to school piano sale! Uprights from \$688; Digitals starting at \$1099; Grands from \$2888! Over 120 pianos on sale! Mid-America Piano, 1-800-950-3774. Preview online: www.piano4u.com

Rytter Hardwood Floors
MASTER CARPENTER
Install, sand & finish, old & new.
NOW available - Furniture Repair
(785) 448-3084

Bauman's Pasture Maintenance
Helping local farmers since 1993. Pasture clearing, fencing, rough terrain mowing (incl. dams), hole drilling - dirt or rock.
Joseph Bauman (785) 489-2416

COMPUTER WORK

COMPUTER EXPERTS GARNETT
785.304.1843

Johnathan Edgcomb • (785) 448-3899
In Business Since 1997

EDGEComb FLOORING
SALES & INSTALLATION
FREE in-home consultation with our MOBILE SHOWROOM!
SAVE 40% off regular retail pricing on name brand flooring

Stop by and visit our Showroom
CARPET • TILE • VINYL
HARDWOODS • LAMINATE

Now Hiring for Full-Time Positions
Benefits Available in 30 Days

Gates Corporation is a worldwide leader in the production of hydraulic hose. We are a growing company and are looking for only the finest employees for our manufacturing operation.

Full Time 12 Hour Rotating Night Shift

Please apply in person. Applications will be taken weekdays 7:00-3:00 pm. Applications must be completed in the facility. GED or High School diploma required. Pre-employment background checks and drug screen required.

Gates Corporation
1450 Montana Rd, Iola, KS

ELIZABETH LAYTON CENTER
For Hope and Guidance

Communications Specialist

The Elizabeth Layton Center has full-time opening for a reliable, mature individual to answer a multi-line phone system, direct calls, schedule appointments, back-up reception and perform other clerical duties in Paola. Computer skills, multi-tasking and excellent interpersonal skills are essential. Position open until filled. **Apply at 505 S. Hospital Drive in Paola or Submit interest & resume to:**
ELC
P.O. Box 677
Ottawa, KS 66067
or by email hr@laytoncenter.org. EOE

COUNTRY CLIPPER
ZERO-TURN LAWN MOWERS

Drought Sale
Lowest Prices of the Year!

• Patented Stand Up Deck
• Patented Joystick or Traditional Dual Lever Steering Options
• Articulating Front Axle & Deck on most models
• One Year Warranty on All Belts

0 DOWN
% FOR 36-48 MONTHS
PAYMENTS UNTIL APRIL 2013

THIS IS A SALE YOU WON'T WANT TO MISS. TEST DRIVE A CLIPPER TODAY AT:

Heck's Small Engine
785-893-1620
6 mi N of Westphalia

Jonsered Certified Dealer
Jonsered
REACH FOR THE RED

Southeast Kansas Mental Health Center

Children's Aide

Working with children after school, 12-18 hours Mon-Thurs. Requires driver's license and reliable vehicle. Prefer experience with children. Min 18 years. Drug screen required. Call Michelle Hoag at (620) 365-5717 if questions.

Southeast Kansas Mental Health Center
P.O. Box 807
Iola, KS 66749.
Applications may be picked up at your local SEKMHC office. EOE/AA.

MAKE MONEY USE THE CLASIFIEDS!

Building a Legacy

MACHINE STORAGE | FARM SHOP | LIVESTOCK

For the Generations

For over 100 years, Morton Buildings has provided quality products and exceptional service to our customers. Whether you are thinking about a new machine storage building, farm shop or livestock facility, with Morton you get a functional, dependable structure.

Now is the time to join a long line of Morton building owners who know the value of a quality building.

Eight offices serving Kansas
800-447-7436
mortonbuildings.com

MORTON BUILDINGS
*2012 Morton Buildings, Inc. Morton Buildings is a registered trademark of Morton Buildings, Inc. All rights reserved. A listing of 66 licenses available at mortonbuildings.com/licenses.aspx. REF CODE 043.

800-447-7436 • mortonbuildings.com

Show your strength.

STAFF DEVELOPMENT COORDINATOR - Full-time weekend position is available for an RN with long-term care or subacute experience. Management background and good organizational skills are beneficial.

RN | LPN - Full-time evening and weekend shift positions and PRN opportunities are available.

We offer great pay and benefits. Apply in person, or send résumés to Amiee_Seck@LCCA.com. 1615 Parker Ave. | LCCA.COM

Life Care Center of Osawatimie

Let the Review do all the work for you!

eBay

Call (785) 448-3121

ASTRO BUILDINGS

New Pricing Call Today!

Acreage Agriculture Equestrian Commercial

Call Millers Construction, Inc.
for your FREE Quote

Everett Miller Rodney Miller
(785) 448-6788 (785) 448-3085

Rockers, Russell engaged



THE ANDERSON COUNTY REVIEW 06-29-2010 / Photo Submitted

Mr. and Mrs. Tom Rockers of Greeley wish to announce the engagement and upcoming marriage of their daughter, Rachel, to Mitchell Russell, son of Mr. and Mrs. Glenn Russell of Mission.

The bride to be is a 2004 graduate of Anderson County High School and a 2006 graduate of KCK Community College with an Associate of Applied Science in physical therapy. She is employed by Hoeger House Rehab Center in Olathe.

Mitchell is a 2002 graduate of Bishop Miega High School and a 2008 KU graduate with a Bachelor of Science degree in

exercise science. He also earned an Associates of Applied Science in physical therapy from KCK Community College in 2011 and is employed by Supplemental Health Care in Overland Park.

Rachel's grandparents are Louann and the late Floyd Hermreck, Martin and the late Mary Rockers, all of Greeley. Mitchell's grandparents are Lillian and the late J. James Russell of Kansas City, Kan., and Robert and the late Hedwig Kavanaugh of Mission.

The couple will be married Nov. 3, 2012, at St. John the Baptist Catholic Church in Greeley.

Backpack Brigade rides on to help kids

Christian Church: Aug. 5 scripture was Revelation 3:15-22. Pastor Mark McCoy presented sermon titled "Five Needs You Can't Afford to Ignore". Prayer and coffee 9 a.m. every Sunday; Men's Bible study at the church 7 a.m. Tuesday; Infusion group at Randy Riebel's 7 p.m. Monday. Aug. 12-Back to School Appreciation and Dedication service for teachers, administration, staff and families during worship; pool party, 4-6 p.m. at Iola Municipal Pool, Riverside Park; family cook-out, 6 p.m. at Riverside Park, food provided. Camp at Hidden Haven was a success. Thirteen kids attended.

UMC: Aug. 5 scripture given at the United Methodist Church was Psalm 51: 1-17, II Corinthians 9: 6-15 and John 6: 16-35. Pastor Leslie Jackson gave the sermon.

Colony Day: The 16th annual event themed "Big Dreams in a Small Town" is Sept. 1.

Events and coordinators are: 7 a.m.-Fun Run/Walk registration, Steve and Susie Bubna; 7-9 a.m.-Colony Lions Club breakfast at City hall; Auto Show entry and set-up, Dotti Hartman; 7:30 a.m.-Fun Run/Walk; 8 a.m.-Vendors registration/set-up, Dottie Hartman; Smoke-off set-up, Chase and Lysa Preston and Angie Black; 8:45 a.m.-Kid's Tractor pull registration, Rick Feuerborn; 9 a.m.-Kid's tractor pull; 9:30 a.m.-Kid's games/races, Crest FCCLA, homemade pie contest registration, Kathy Holloway; 10 a.m.-parade lineup/judging, Kloma Buckle and Melissa Hobbs, decorated bike judging sponsored by Jolly Dozen Club; 11 a.m.-parade led by 2012 Grand Marshall Charlene Tinsley; 11:45 a.m.-coed volleyball tournament, Jeff McAdam; 12 noon-pie eating contest, Kathy Holloway; kid's inflatable games, pony pull, Terry Ellis (north of T's Total Image); 12:30-pie auction, 1 p.m.-cake walk, Bob and Mary Scovill; 1:45-smoke-off awards; 2 p.m.-Ice Cream Social, Colony Christian Church Working Wonders; Mayor's cookie jar contest and judging, Denise King, auto show awards; 2:30-basket auction, Cathy Allen, mayor's cookie jar contest awards followed by cookie jar auction; 3:30-variety show, Brenda Dowling; 4 p.m.-Colony Day Peewee rodeo (north of fire



by Mrs. Morris Luedke Contact (620) 852-3379 or colonynews@ckt.net with Colony news.

station, South Pine St.) 5 p.m.-Colony Christian Church Praise Band, supper by Garnett State Savings Bank (served by Colony Fire Dept, quilt raffle (made by Jessica Stalford), Colony Day Grand Prize Drawing-\$500 gift card to Big Cedar Lodge, Branson, MO.

The Country Diner will be open Colony Day from 10 a.m. until 2 p.m.

Alumni: 105th Annual Colony/Crest Alumni: It is hoped you were able to get your reservations made for this annual event. If not, you may purchase tickets at the door Sept. 3 for \$12.00. This covers the alumni fee and the banquet. Crest school doors open at 5 p.m. for visitation and registration. Chicken Mary's will cater the meal to be served in the Crest auditorium at 6:30 p.m. A 50/50 pot will be available; proceeds go to the Alumni Scholarship Fund. The business meeting will follow and a short program of entertainment will be presented.

This year's officers are Debbie Barnett Troxel, president, Linda Weatherman Hess, vice president, Linda Barnett Ellis, secretary and Arvin Clemans, treasurer. If you have questions you may contact Linda at 785-242-1338 or write her at 1872 Haskell Road, Ottawa, KS 66067, Debbie at 620-365-5941 or Arvin at 620-365-2798.

Backpack Brigade: Several years ago Melissa Hobbs and her mother Kloma Buckle began this program and they continued this year. The school hands out backpacks with some school supplies included to qualifying Crest Elementary student's kindergarten through 5th grade that need them. A small supply is kept in the elementary school office for those who enter the school during in the year. Over 70 bags are prepared every year. If you would

like to donate an account is set up at the Garnett State Savings Bank, Colony branch.

Story Hour: The last story hour for the summer was held July 31. Nine children attended. Lola Webber was in charge but unable to attend. She had the craft project (Alien Monster Puppets) ready, however. Debbie Wools read the stories. Blaine King won a Dream Big inflatable ball for returning his reading list. Ice cream sandwiches and drinks were served. All the children got a bag of goodies to take home.

Lions Club: Twelve members were in attendance at the Aug. 1 meeting. The United Methodist women prepared a great meal as usual. President A.J. Silvey opened the meeting with the flag salute and prayer was given by Jay Dutton. The Lions participation for Colony Day will start with the annual breakfast at the City Hall community room and continue with a taco stand during the day's events. The benches in the business district will be repaired by the Lions, with one being dedicated in memory of Lion Bill Michael. Another directors meeting will be held Aug. 13 at 6:30 p.m. at the United Methodist Church basement. Next regular meeting is Aug. 15.

Weather Alert: Colony residents who wish to get National Weather Service severe weather warnings by phone via the county's Code Red system should register online at www.andersoncountyks.org, click Public safety/emergency management, or pick up registration forms at the Colony City Office. You must be registered to receive the severe weather warnings by landline or cell phone. For more information contact AC Emergency Management at 785-448-6797.

Birthday and Wedding Anniversary: Do you have your September celebration date? If not, let us know by emailing colonynews@ckt.net, phoning 852-3379, sending or bringing to 702 Pine St., Colony, 66015. If bringing, please leave in leave-a-note box in carport. When received by August 20, it will appear with others in your August 27 paper. Thank you.

Birthday: A card shower is requested for Vera Comstock. She will be 96 on August 29. She is doing fairly well, tells

everyone that Colony is her home. Her address: Country View Nursing Home, 301 E. Miller St., Prescott, KS 66767.

Around Town: Shirley McGhee has returned home from a four-day visit in Washington, DC where she attended the Delta Kappa Gamma (an international teachers' society) Education Foundation Seminar and saw many historical sights also. The group then spent a week in New York City for the Delta Kappa Gamma International Convention where almost 2000 members representing 16 foreign countries and the U.S. attended. She remarked it was something to see that many people in one convention hall. Many of the New York sights were visited plus and two plays attended, which was quite an experience.

Mark and Cheryl Luedke took their parents Morris and Allene Luedke to Colby and Atwood where they visited relatives. Returning home Aug. 4 they visited Kenneth Luedke and his daughters, Lois and Gail in Atchison. Cheryl returned to her home in Florida on August 7.

Calendar: August 16-County bus to Iola, phone 24 hrs. before you need a ride 785-448-4410 any weekday; 29-Fiddlers, Pickers & Singers, covered dish luncheon, Iola North Community bldg.; dancing follows; 20-Seekers Not Slackers 4-H Club, Lone Elm community building, 7 p.m.; 21-Library board meeting, city hall, 5:30 p.m.

School Calendar: 16-Teacher work day; 17-First day of school

Meal Site: 17-lasagna, tossed salad, Italian veggies, bread stix, pineapple mango; 20-Salisburg steak, mashed potatoes, gravy, lima beans, wheat bread, peaches; 22-live band, visitation cards accepted-turkey roast, mashed potatoes, gravy, Caribbean blend veggies, wheat roll, jello with fruit. Games played each meal day. Phone 852-3479 for reservations.

Gull 90th birthday

Goldie Gull will celebrate her 90th birthday Aug. 22. To send a card, she is at Guest Home Estates, 806 W. Fourth Ave., Garnett KS 66032.



THE ANDERSON COUNTY REVIEW 01-04-2011 / Photo Submitted

Seniors meet

The Greeley Senior Citizens met Wednesday, Aug. 8, at the United Methodist Hall for a carry-in dinner at noon with 14 attending.

Happy birthday was sung to Doris Rommelfanger and happy anniversary to Carroll and Rita Peterson, 62 years, and Jerry and Mamie Sommers.

Bingo was played with 23 prizes won. The next meeting is Sept. 12. Everyone is welcome to attend.

Garnett student completes space science program

HUTCHINSON - Isaac Morrill, of Garnett, child of Josh and Lacey Morrill, graduated from Space 201 of the Kansas Adventures in Outer Space (KAOS) July 20, 2012, at the

Kansas Cosmosphere and Space Center. Isaac will be entering grade 8 at Anderson County Junior Senior High School this fall.

You name it, we print it. Garnett Publishing, Inc.. (785) 448-3121

Community Country Store

SPECIALIZING IN CLEARANCE GROCERY ITEMS

BAKED GOODS NOW HERE	REAL AMERICAN SLICED CHEESE 5 LBS \$9.49	FREE COFFEE & DONUTS EVERY SATURDAY MORNING
STARBUCKS COFFEE 12 OZ \$3.99	YOGURT SELECTION \$1.89/FLAT 24 COUNT	VELVEETA 1 LB. BLOCK \$2.19

Community Country Store

2 MILES WEST OF GARNETT ON 7TH ST
MON-FRI 8AM - 6PM
SAT. 8AM - 3PM
CLOSED SUN.
785-448-0010

WE WELCOME EBT CUSTOMERS

Back to Class

Make the Grade With A+ Saving On These Quality Pre-Owned Autos

<p>2008 Pontiac Grand Prix V6, Alum Whls, 65000 Miles, Super Clean</p> <p>\$12,400</p>	<p>2008 Chrysler 300 Touring Sedan 61000 Miles, Sunroof, Very Nice</p> <p>\$15,900</p>	<p>2008 Chevy Impala LTZ Sedan Heated Leather Seats, Alum Whls, Sharp</p> <p>\$12,500</p>
<p>2008 Lincoln Navigator One Owner, 44000 Miles, DVD, Navigation</p> <p>\$29,500</p>	<p>2007 Cadillac CTS Sedan Leather, 45000 Miles, BIG Price Reduction</p> <p>\$14,700</p>	<p>2007 Ford Explorer 4WD Eddie Bauer Edition, See This One</p> <p>\$16,300</p>
<p>2006 Dodge Durango 4Dr, SXT 2WD, 74000 Miles, Good Transportation</p> <p>\$10,200</p>	<p>2004 Buick LeSabre Limited 6 Passenger, Luxury, Save On This One</p> <p>\$8,300</p>	<p>2003 Jeep Liberty Good Economical Transportation</p> <p>\$9,000</p>
<p>1999 Buick Park Avenue 6 Passenger Luxury, Only 84,000 Miles</p> <p>\$5,900</p>	<p>www.ranzmotors.com</p>	

Find us on Facebook

Stay in the loop with daily news updates and breaking news from the Anderson County area.

You like this.

The Anderson County Review

Official Entry Form

EXCLUSIVELY for the readers of The Anderson County Review...

Register to win this Gator!

O'MALLEY EQUIPMENT "Serving Customers Since 1979" 2701 N. State St. • IOLA (800) 887-2187 • (620) 365-2187

JOHN DEERE

Official Entry Form • Please Print Clearly

Name: _____
Phone: _____
City: _____

RULES: Enter as many times as you want during the contest period, multiple entries increase your chance of winning. Only entries submitted on Official Entry Form will be accepted, no photocopies, reproductions or electronic versions will be accepted. Entries may be dropped off at the offices of The Anderson County Review during business hours or at our night drop box, or mailed to Garnett Publishing, Inc., P.O. Box 409, Garnett, KS, 66032, or deposited in the drawing box at Country Mart in Garnett. No purchase necessary to win, contact the Review for details. Drawing will be held at offices of The Anderson County Review at 1 p.m. Friday, Aug. 31, 2012. In the event the first drawn name is not immediately available by phone, a second drawing will be made immediately, etc., until a winner is confirmed. Sponsored by the Review and in part by O'Malley Equipment, Inc., Iola, KS.

RANZ MOTOR CO., INC.